

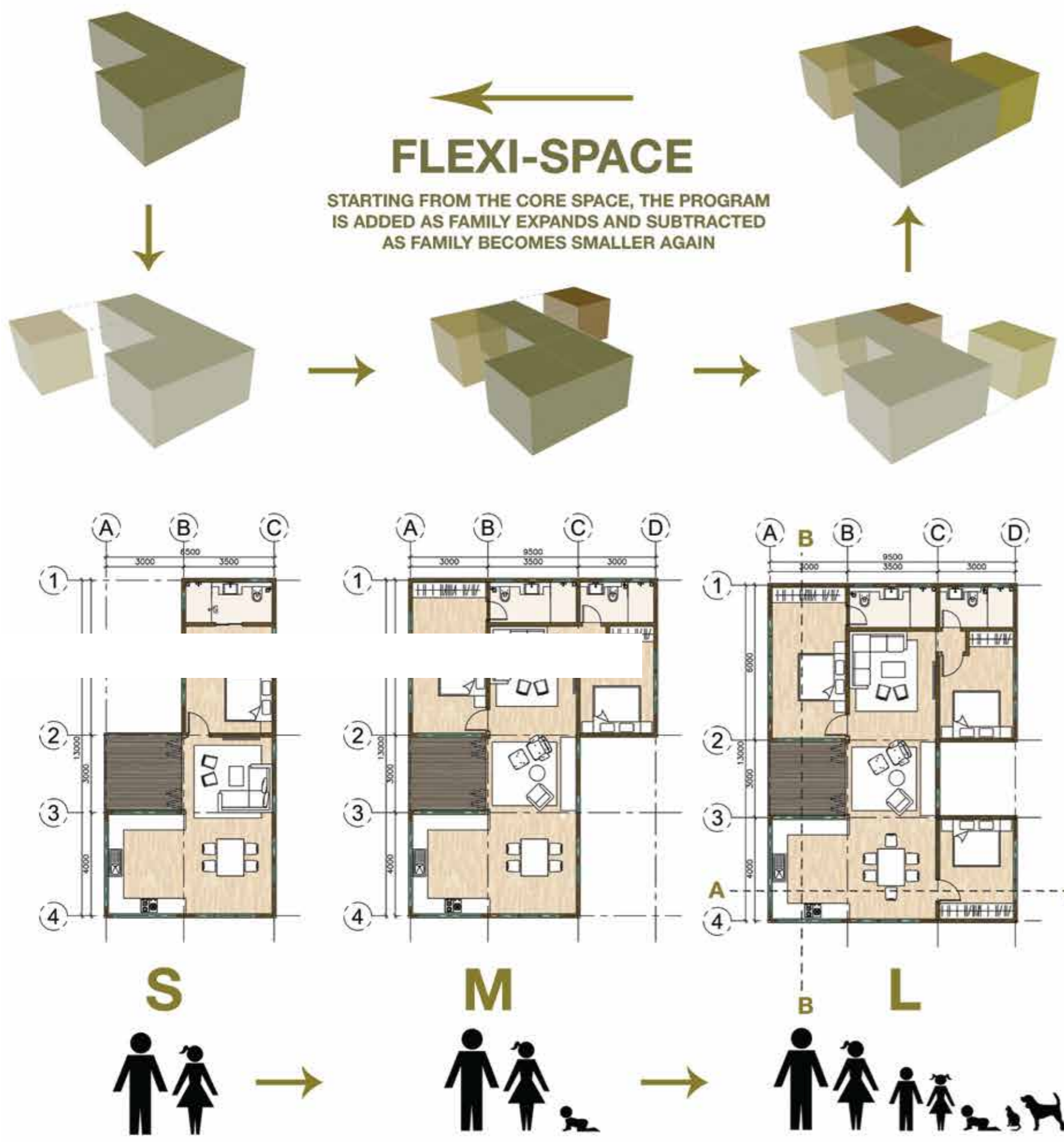


# FLEXIbach

(MONA FASIAH IBRAHIM KUALA LUMPUR-MALAYSIA,  
ABDUL QAYYUM ZAINUL KUALA LUMPUR-MALAYSIA)

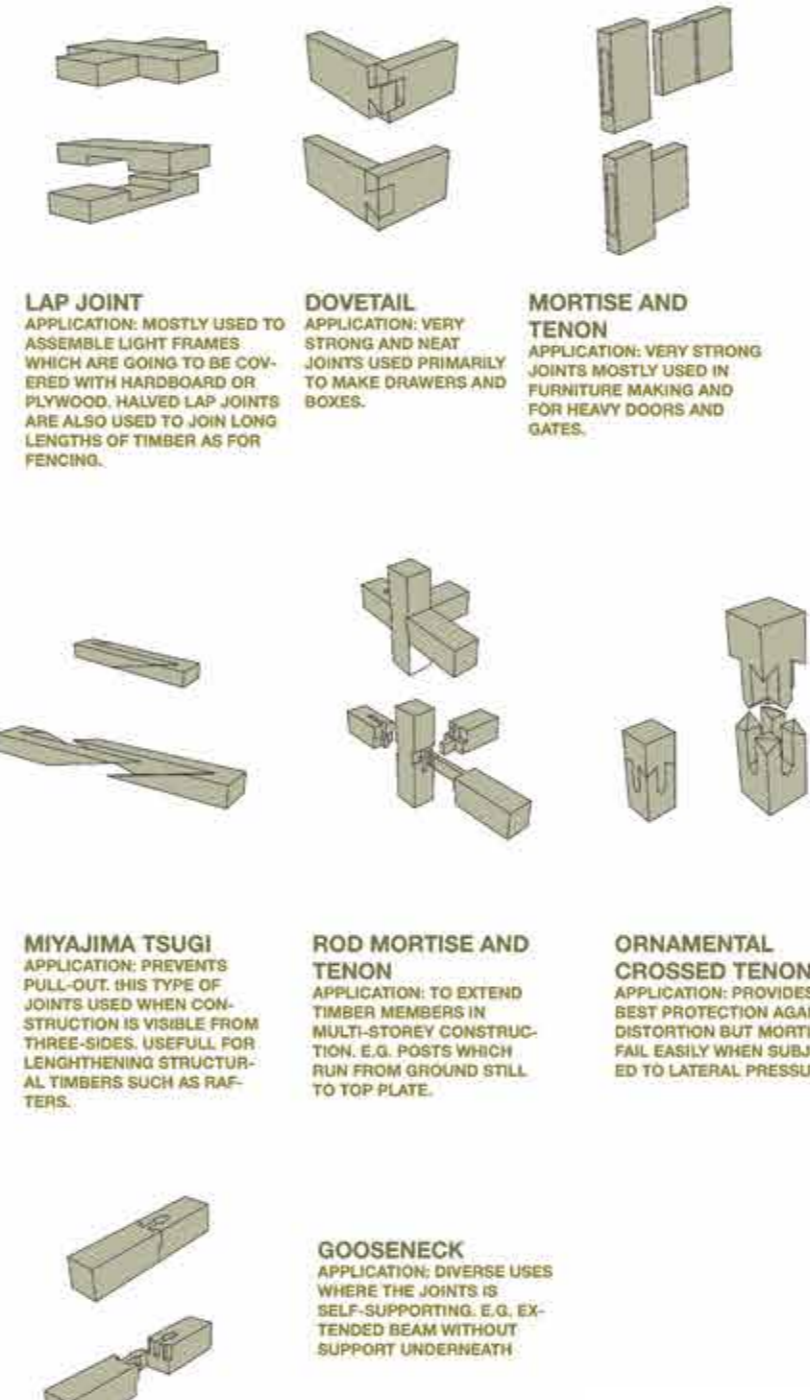
The Flexi-Bach design is based on the lifecycle of a household and is intended to accommodate the evolving size of households in New Zealand where a large increase in single and double person homes is expected. The future growth in smaller households will be driven by empty nesters and early or active retirees. Together these groups will account for 74 percent of the projected growth in small households. The future population of Christchurch will therefore be comprised of more empty nesters or couples that stay behind after younger generations have moved away.

Inspired by traditional Malay housing which efficiently grows according to the needs of its users, the Flexi-Bach house easily expands and contracts according to the size of the household with the addition or subtraction of a "bach". Starting with a basic living unit, the house can literally grow and shrink along with the changing size of a family. The S unit is the basic and smallest unit and is intended for couples and empty nesters. The medium M unit is designed for a family of three and the large L unit is intended for a family of four. The flexible size reduces unnecessary maintenance and housekeeping.



## JOINTS SYSTEM

THE PROPOSED FLEXIBLE SPACES WOULD REQUIRE SIMPLE CONSTRUCTION METHOD THAT COULD BE ADDED AND REMOVED WITH LITTLE EFFORT. WOOD JOINTING SYSTEM HAS BEEN USED FOR CENTURIES THROUGHOUT THE WORLD. THIS SYSTEM IS NOT ONLY PERFECT FOR WOOD'S STRUCTURAL INTEGRITY BUT ALSO PROVIDES COST AND TIME EFFICIENCY BENEFITS.



Inspired by traditional Malay housing which efficiently grows according to the needs of its users, the Flexi-Bach house easily expands and contracts according to the size of a household with the addition or subtraction of a "bach".

Starting with a basic living unit, the house can literally grow and shrink along with the changing size of a family. The S unit is the basic and smallest unit and is intended for couples and empty nesters. The medium M unit is designed for a family of three and the large L unit is intended for a family of four.