

Price Monitoring and Analysis Country Brief

Lesotho

January-April 2011

Key Messages

- The level of food insecurity has declined due to improved domestic supply situation for the 2010 agricultural season which recorded significant increases in maize and sorghum output.
- People in need of food assistance has decreased to 250,000. Support to those affected by flooding is provided by WFP and CERF.
- Heavy rains between December 2010 and February 2011 are likely to adversely affect production for 2011 season and reduce access to food.
- The Government is assisting producers with input subsidy programmes and, with the help of FAO, is implementing Input Trade Fairs.

Background

The total population was around 2 million with an annual growth rate equivalent to 0%. The undernourished population was estimated to be 14% while the prevalence of HIV among adults recorded 23.6%.

Economic Indicators	View Data
Total Population (millions) - 2009 (WB)	2.067
Population growth rate - 2009 (WB)	0%
GNI per capita, \$ PPP - 2009 (WB)	1800
Population below 1\$ PPP per day - 2003 (MDGI)	43%
Rural population - 2009 (WB)	73%
Agriculture, value added (% of GDP) - 2009 (WB)	8%

Food Consumption	
Undernourished Population - 2005/2007 (FAO)	14%
Cereal share in total dietary energy consumption - 2007 (FAO)	78%
Meat share in total dietary energy consumption - 2007 (FAO)	4%

Health Indicators	
Pop. with sustainable access to improved sanitation - 2008 (WHO)	29%
Life expectancy at birth (years) both sexes - 2008 (WHO)	47
Pop. with access to improved drinking water sources - 2008 (WHO)	85%
Prevalence of HIV among adults aged >= 15 years - 2009 (WHO)	23.6%

Prices

No price data available.

Food Security Situation Assessment

Based on the mid February projections by the VAC, about 250,000 people will need food support in the next 12 months as a result of the heavy rains. This represents a decline from the 400,000 people estimated in 2009. The decrease is on account of the rise in national cereal production. FAO Hunger map estimates moderately low undernourishment and IFPRI Global Hunger Index reports serious hunger in Lesotho.

CURRENT EMERGENCY ASSESSMENT

Exceptional shortfall in aggregate food production supplies	Widespread lack of access	Severe localized food insecurity	FAO/GIEWS CPFS 2010
---	---------------------------	----------------------------------	-------------------------------------

Lesotho is not covered by FEWSNET. FEWSNET coverage is limited 14 African countries 1 Caribbean (Haiti) and 1 Central Asia (Afghanistan). Food security status is given for different parts of the country in each case. [FEWSNET](#)

SCALE OF HUNGER (% of Undernourishment)

Very high (>= 35%)	High (25-34%)	Moderately high (15-24%)	Moderately low (5-14%)	Very low (< 5% under.)	FAO Hunger Map
--------------------	---------------	--------------------------	------------------------	------------------------	--------------------------------

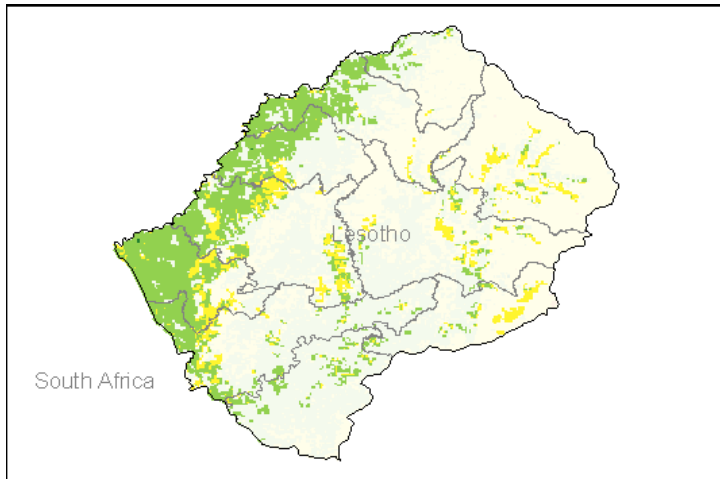
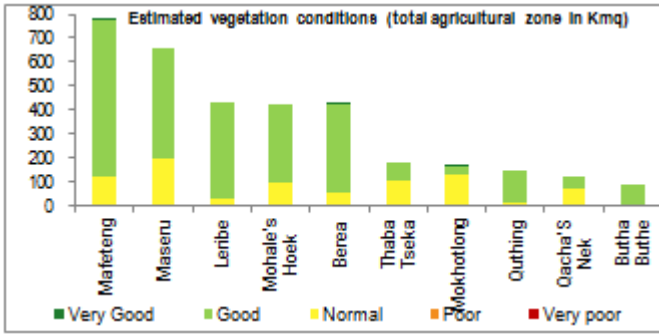
FAO Hunger Map classifies all countries of the world into five based on % of population undernourished.

Extremely alarming	Alarming	Serious	Moderate	Low	IFPRI/2010 GHI
--------------------	----------	---------	----------	-----	--------------------------------

Information required to draw this chart is not available.

Vegetation Condition

At the end of the rainy season, good conditions are observed in the major part of the country. The general indicator of vegetation condition provided below is the relative difference between the NDVI for April 2011 and the average of the last 10 years, calculated on the agricultural zones derived from the GLOBCOVER 2005 database (ESA).



Source: JRC MARS – FoodSec

Crop phase in the reference period

Sowing	No crops are sowed during the reference period
Growing	Maize - Sorghum
Harvesting	No crops are harvested during the reference period

Natural Disasters, Drought and Conflicts

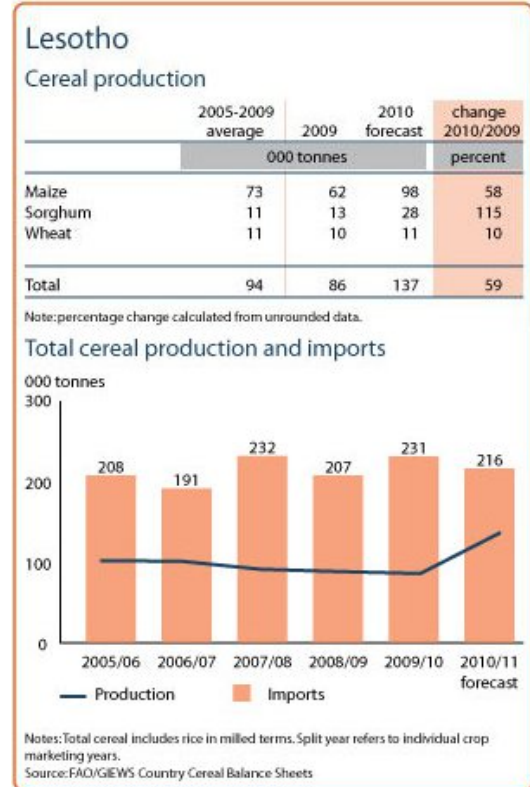
In Lesotho, heavy rains received between December and February caused some crop damage in the lowland areas, and in some of the worst affected areas reports indicate crop losses of 30 to 60%. The 2010/11 season production is therefore expected to be poor as field operations, especially weeding was low in the northern region due to persistent rains and water logging.

Refugees and IDPs	2007	2008	2009
Total in the country	n.a.	0	0
Total outside the country	20	25	14

Source: UNHCR Statistical Online Population Database, United Nations High Commissioner for Refugees (UNHCR), Data extracted on 01/12/2010.

Food Balance Sheet

Maize and sorghum production in 2010 is estimated to increase substantially to 98,035 and 28,000 tonnes respectively. Total 2010 cereal production for the 2009/10 season is estimated at approximately 137,000 tonnes, some 59% above the previous year and 46% above the five year average. Import requirements in 2010/11 marketing year (April/March) amount at 216,000 tonnes, some 6% below 2009/10.



Source: GIEWS Country Briefs

Government Policies

The Gvmt continued its input subsidy schemes and FAO continued to provide assistance through Input Trade Fairs for the current season, improving access to seeds, fertilisers and agricultural hardware. The Gvmt requested WFP support, which has extended its school feeding programme for a further two years, from Jan 2011 to Dec 2012.

Consumer and market oriented measures	n.a.
Producer oriented measures	Input subsidy; Input Faire Trades
Trade policy measures	n.a.
Safety net (increased or introduced)	Food transfer

Different sources

Current events to watch (Click to see the full report)

- [Lesotho Appeal No. MAALS002 Annual Report](#)
- [Southern Africa Flood and Cyclone Situation Update #13](#)
- [Les investissements accrus dans l'éducation en Afrique...](#)
- [Education investment jump in Sub-Saharan Africa pays d...](#)
- [Southern Africa - Regional Food Security Update, April...](#)

For more information, contact: Information-for-action@fao.org
Website: www.foodsec.org

Powered By the [GIEWS Workstation](#)