



BUILDING CAPACITIES FOR BETTER...



**NUTRITION AND FOOD SECURITY PROGRAMMING
SEED SECURITY ASSESSMENT
ACCOUNTABILITY TO AFFECTED POPULATIONS**



Burkina Faso | Chad | Mali | Niger | Ethiopia | Kenya | Somalia | South Sudan



The **nutrition** component builds capacities of humanitarian professionals to integrate nutrition into food security interventions appropriately and accountably throughout the programme cycle.

Activities include:

- ⚙ Mapping existing tools, manuals and training materials
- ⚙ Identifying case studies and best practices
- ⚙ Regional training workshops and training of trainers sessions
- ⚙ Providing technical assistance to integrate nutrition outcomes in food security programming at national level
- ⚙ Developing on-line training modules on integrating nutrition and food security in emergency and resilience programming
- ⚙ Supporting the Inter-Cluster Working Group of the global Food Security Cluster

To ensure the project meets the needs of the Nutrition and Food Security Programming clusters and their members at global, regional and country levels, a collaborative approach has been established. A key element of this is a Project Task Force involving a number of aid agencies (WVI, ACF, IMC, SC-UK, IFRC, ICRC), the Global Nutrition Cluster and the global Food Security Cluster.

Contacts:

Global Domitille Kauffmann - domitille.kauffmann@fao.org
Horn of Africa Angela Kimani - angela.kimani@fao.org
Sahel..... Christophe Breyne – christophe.breyne@fao.org



CONDUCT HIGH QUALITY AND RAPID SEED SECURITY ASSESSMENTS



The objective of the **Seed Security Assessment (SSA)** component of the project is to strengthen capacity of humanitarian professionals to conduct high quality and rapid seed security assessments.

Activities include:

- ⚙ Reviewing and enhancing existing seed system conceptual framework
- ⚙ Conducting a systematic review of completed and on-going SSA assessments
- ⚙ Strengthening the SSA Network / Community of practice
- ⚙ Revising and updating existing SSA guidelines and training materials
- ⚙ Conducting training at regional level (training of trainers)
- ⚙ Supporting assessment processes at country level

This component is supported by a global technical steering committee consisting of key institutions involved in SSA.

Contacts:

Global	Samuel Kugbei - samuel.kugbei@fao.org
Africa	Tom Remington - tom.remington@fao.org
Horn of Africa	Joseph Okidi - joseph.okidi@fao.org Stephen Walsh - stephen.walsh@crs.org
Sahel.....	Roger Shongo - roger.shongo@fao.org



ENSURE ACCOUNTABILITY TO AFFECTED POPULATIONS



Using FAO's 7 **Commitments to Accountability to Affected Populations (CAAP)** as a guiding framework, the accountability component of the project will ensure that the people we serve are engaged as central stakeholders and partners throughout the project.

Activities include:

- ⚙ Baseline assessment of FAO and partners' current levels of compliance with CAAPs (or equivalent proxy)
- ⚙ Developing capacity building materials which weave AAP into the nutrition and SSA components and providing capacity support (including training, mentoring, accompaniment etc)
- ⚙ Developing advocacy materials for Nutrition and Food Security Programming clusters, as well as for relevant accountability networks, and supporting their lobbying activities
- ⚙ Documenting and publishing key findings in various media to encourage sector wide learning

Contacts:

Global Zia Choudhury - zia.choudhury@fao.org

Horn of Africa Sultan Ahmed - sultan.ahmed@fao.org

Sahel..... Mamadou Ndaiye - mamadou.ndaiye@fao.org

David Hampson - david.hampson@fao.org (from17.02.14)

BUILDING CAPACITY IN FOOD SECURITY PROGRAMMING THROUGH ENHANCED INTEGRATION OF NUTRITION, IMPROVED SEED SECURITY ASSESSMENT AND STRENGTHENED ACCOUNTABILITY

Every year, huge efforts are made to tackle food insecurity in countries facing economic, social, political and natural crises. However, the interventions designed to improve the food security of the most marginalised and vulnerable people in these countries may not be effective or appropriate and, in some cases, may even cause harm. In an effort to improve programme quality and effectiveness of food security programming in crisis, FAO is implementing an ECHO funded capacity building project which concentrates on three important problems:

- ⚙️ **Nutrition** – Nutrition is commonly separated from food security during assessment, analysis and response planning leading to poor nutritional impact of food security interventions.
- ⚙️ **Seeds** – If it happens at all, the assessment of the effects of crisis on seed systems is often inaccurate and based on faulty assumptions. This leads to inefficient and potentially harmful seed based interventions, with negative consequences for livelihood recovery.
- ⚙️ **Accountability** – Too often, affected populations are not meaningfully involved in project design, implementation or monitoring. This can lead to poor quality projects, which are not based on local needs and capacities. This lack of consultation exacerbates existing inequalities and may cause conflict.

BUILDING CONSENSUS AND DEVELOPING CAPACITY FOR IMPROVED FOOD SECURITY RESPONSE

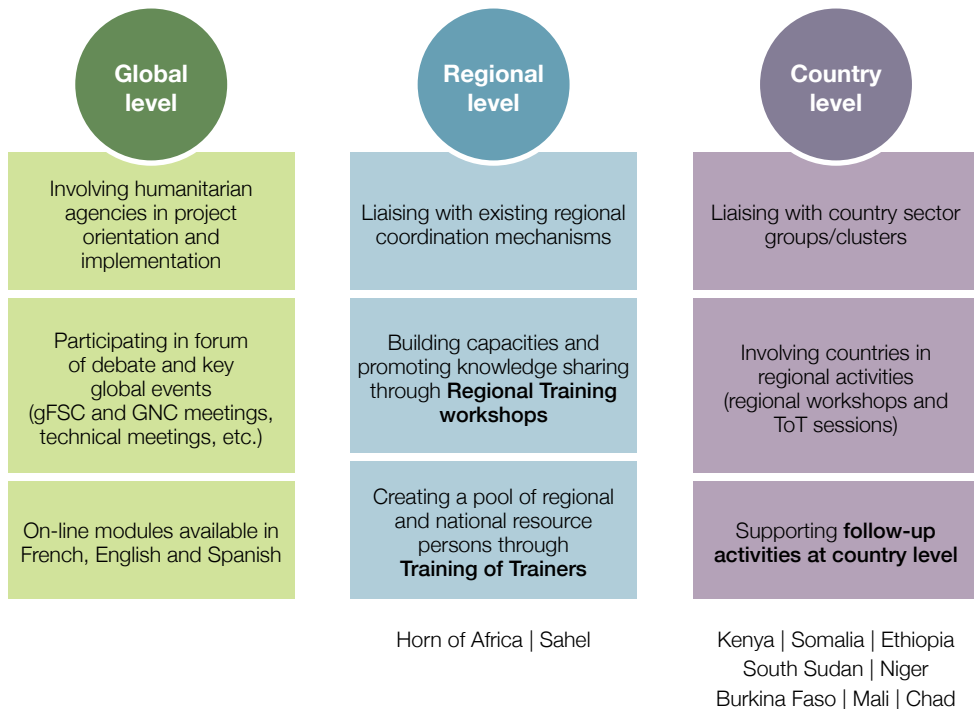
The project covers three main areas:

- ⚙️ Building capacities to **integrate nutrition** in food security programming
- ⚙️ Strengthening capacity to conduct high quality and accurate **seed security assessments (SSA)**
- ⚙️ Ensuring better integration of **accountability to affected populations (AAP)** in food security programming (mainstreamed across all project activities)

The project focuses on crisis-prone countries in the **Sahel** (Burkina Faso, Chad, Mali and Niger) and the **Horn of Africa** (Ethiopia, Kenya, Somalia, South-Sudan).

A COLLABORATIVE AND SYSTEM-WIDE APPROACH

- ⚙️ **A collaborative and concerted approach:** the project is being implemented in close collaboration with aid agencies working in agriculture, Nutrition and Food Security Programming, building on current initiatives and efforts.
- ⚙️ **A system-wide strategy** to achieve sustainable results at different levels:



PROJECT OVERVIEW

Project dates: July 2013 - December 2014

Partners: CRS, WVI, IMC, ACF, IFRC, SCUUK, ICRC, gFSC, GNC, regional and national coordination mechanisms.

Project coordinator: Neil Marsland - neil.marsland@fao.org

Funded by:



Coordinated by:

