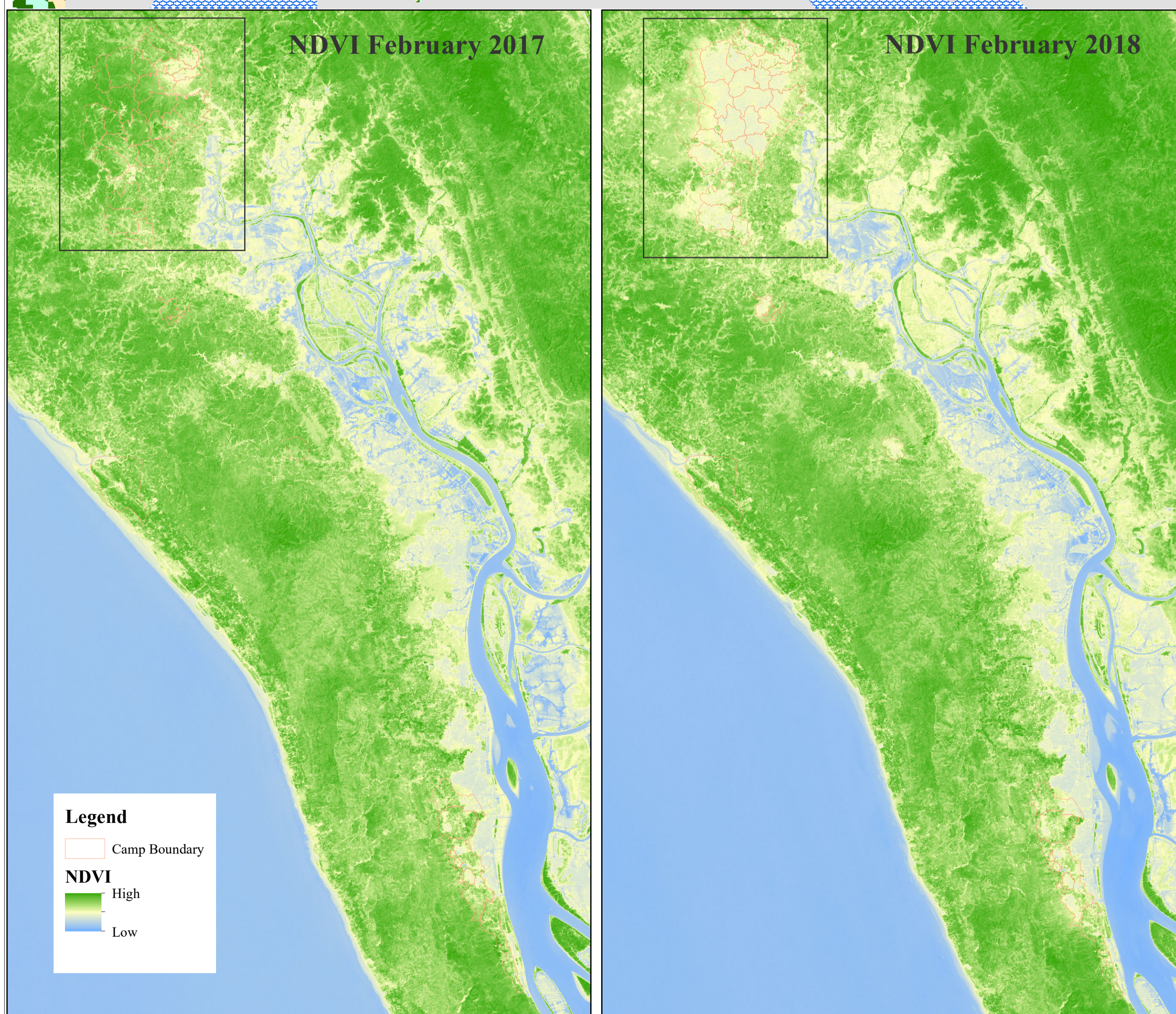


Camps	Interventions* (Hectare)			
	A1	A2	A3	A4
3	11	0	0	34
4	32	0	1	81
5	9	0	0	53
6	6	0	0	30
7	40	0	2	28
9	35	0	1	29
13	40	0	1	33
14	42	0	7	31
15	42	0	1	54
16	27	1	3	17
17	34	0	0	55
18	5	0	0	70
19	43	0	2	26
20	39	0	1	10
1E	36	1	22	5
1W	33	0	2	18
20 Extension	83	0	7	1
2E	21	0	3	15
2W	16	0	1	23
4 Extension	49	0	1	1
8E	56	0	6	33
8W	7	0	0	70
Kutupalong RC	23	0	4	11
Total	730	4	66	728

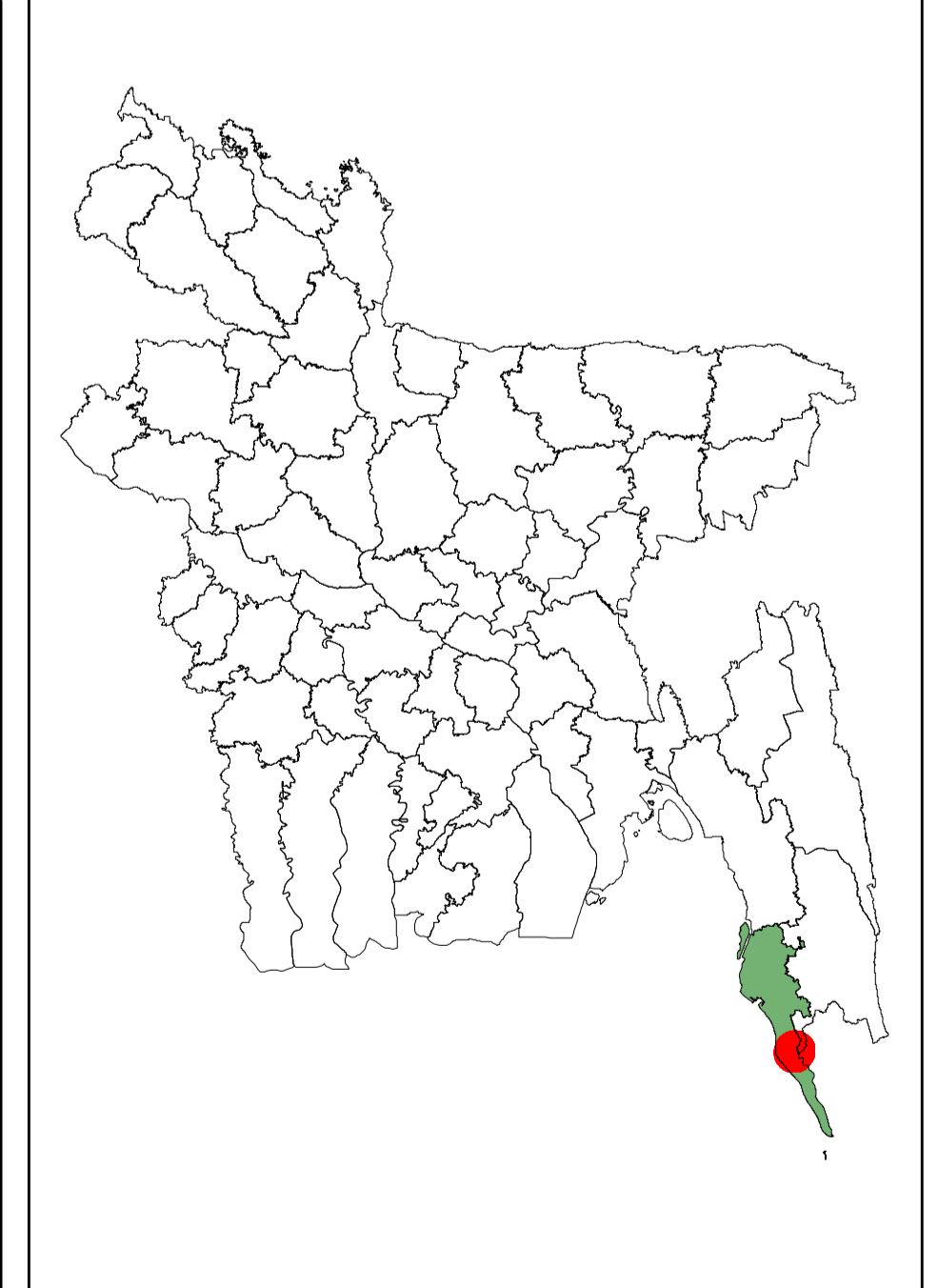
* A1- Land Stabilization
 A2- Forest Restoration
 A3- Afforestation/Reforestation
 A4- Seedling Distribution



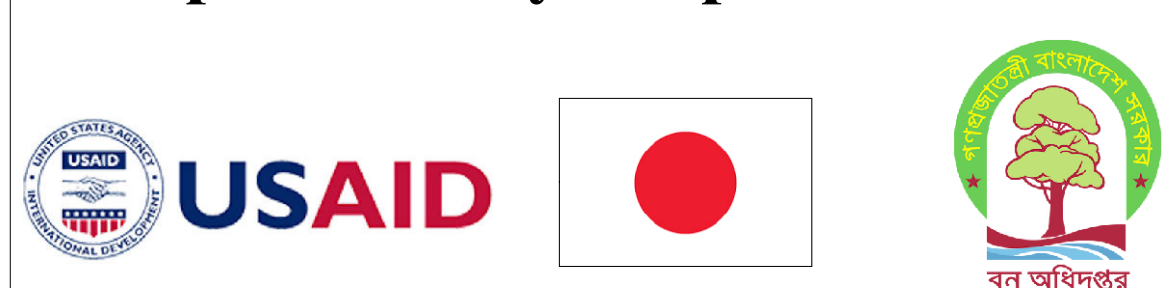
Geographic locations of potential restoration activities were identified throughout Cox's Bazar South Forest Division for restoring degraded landscapes and supporting vulnerable host and refugee communities. The areas were identified by analyzing the NDVI based land cover categories in February 2018, considering land degradation between February 2017 and February 2018, and taking into account suitability analysis for six restoration activities for three zones – inside the camps (Zone A), one km buffer around the camps (Zone B), and within one to five km around the camps (Zone C). The activities are:

- Land stabilization,
- Land restoration,
- Forest restoration,
- Afforestation / reforestation,
- Seedling distribution and
- Habitat restoration

Land degradation was determined by differences in Normalized Difference Vegetation Index (NDVI) values using Sentinel 2 multispectral 10m images with maximum cloud cover of 10 percent. Suitability analysis was conducted considering different factors (e.g., elevation, elephant route, road, river, flood occurrence, etc.) having implication for proposed restoration activities.



Coordinate System: GCS_WGS_1984
 Projection: Transverse_Mercator
 Camp Boundary: <https://data.humdata.org>



Suggested Reference: Ritu, S., Jalal, R. and Henry, M. (2018). Potential areas of landscape restoration interventions within and around refugee camps of northern part of Cox's Bazar South Forest Division (2018), FAOBD & FD, Dhaka, Bangladesh.