



Food and Agriculture
Organization of the
United Nations

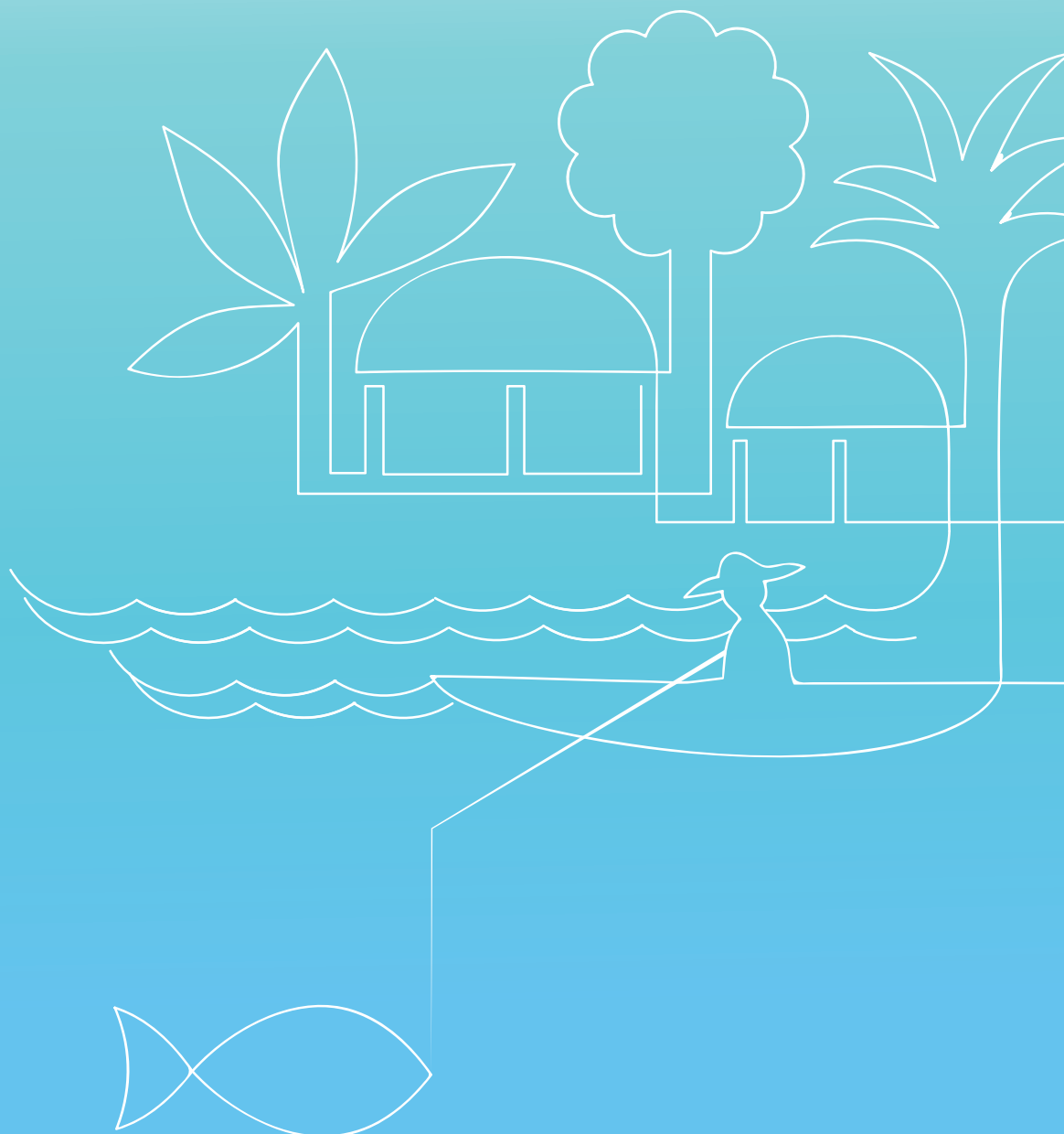


Report of the Tonga National Workshop on Special Management Areas: *Lessons Learned*

Vava'u, Tonga, 30 April–2 May 2019

Lipooti ki he Fakataha Fakafonua Ki He Feitu'u Pule'i Makehe: *Ngaahi Lesoni Ke Tau Ako*

Vava'u, Tonga, 30 'Epeleli–2 Me 2019



Report of the
TONGA NATIONAL WORKSHOP ON SPECIAL MANAGEMENT AREAS – LESSONS LEARNED
Vava'u, Tonga, 30 April–2 May 2019

Lipooti ki he
FAKATAHA FAKAFONUA KI HE FEITU'U PULE'I MAKEHE – NGAHI LESONI KUO TAU AKO
Vava'u, Tonga, 30 'Epeleli–2 Me 2019

Published by
the **Food and Agriculture Organization of the United Nations**
and
Tonga Ministry of Fisheries
and
Vava'u Environmental Protection Association

Paaki 'e he
Kautaha Fakamamani Lahi ki he Me'atokoni mo e Ngoue 'a e Ngaahi Pule'anga Fakatahataha
mo e
Potungae Toutai 'a Tonga
mo e
Vava'u Environmental Protection Association

FAO, VEPA and MoF. 2020. *Report of the Tonga National Workshop on Special Management Areas: Lessons Learned, Vava'u, Tonga, 30 April–2 May 2019/ Lipooti 'o e Fakataba Fakafonua ki he Feitu'u Pule'i Makehe (SMA) - Ngaahi Lesoni Kuo Tau Ako, Vava'u, Tonga, 30 'o 'Epeleli – 2 'o Me. Apia.*
<https://doi.org/10.4060/cb1075b>.

The designations employed and the presentation of material in this information product do not imply the expression of any opinion whatsoever on the part of the Food and Agriculture Organization of the United Nations (FAO) Tonga Ministry of Fisheries (MoF) or Vava'u Environmental Protection Association (VEPA) concerning the legal or development status of any country, territory, city or area or of its authorities, or concerning the delimitation of its frontiers or boundaries. The mention of specific companies or products of manufacturers, whether or not these have been patented, does not imply that these have been endorsed or recommended by FAO, VEPA or MoF in preference to others of a similar nature that are not mentioned.

The views expressed in this information product are those of the author(s) and do not necessarily reflect the views or policies of FAO, VEPA or MoF.

ISBN 978-92-5-133328-0 [FAO]
© FAO, 2020



Some rights reserved. This work is made available under the Creative Commons Attribution-NonCommercial-ShareAlike 3.0 IGO licence (CC BY-NC-SA 3.0 IGO; <https://creativecommons.org/licenses/by-nc-sa/3.0/igo/legalcode>).

Under the terms of this licence, this work may be copied, redistributed and adapted for non-commercial purposes, provided that the work is appropriately cited. In any use of this work, there should be no suggestion that FAO endorses any specific organization, products or services. The use of the FAO logo is not permitted. If the work is adapted, then it must be licensed under the same or equivalent Creative Commons licence. If a translation of this work is created, it must include the following disclaimer along with the required citation: “This translation was not created by the Food and Agriculture Organization of the United Nations (FAO). FAO is not responsible for the content or accuracy of this translation. The original English/Tonga edition shall be the authoritative edition.”

Disputes arising under the licence that cannot be settled amicably will be resolved by mediation and arbitration as described in Article 8 of the licence except as otherwise provided herein. The applicable mediation rules will be the mediation rules of the World Intellectual Property Organization <http://www.wipo.int/amc/en/mediation/rules> and any arbitration will be in accordance with the Arbitration Rules of the United Nations Commission on International Trade Law (UNCITRAL).

Third-party materials. Users wishing to reuse material from this work that is attributed to a third party, such as tables, figures or images, are responsible for determining whether permission is needed for that reuse and for obtaining permission from the copyright holder. The risk of claims resulting from infringement of any third-party-owned component in the work rests solely with the user.

Sales, rights and licensing. FAO information products are available on the FAO website (www.fao.org/publications) and can be purchased through publications-sales@fao.org.

Requests for commercial use should be submitted via: www.fao.org/contact-us/licence-request.

Queries regarding rights and licensing should be submitted to: copyright@fao.org.



Preparation of this document

This document provides the proceedings of the Tonga National Workshop on Special Management Areas: Lessons Learned, which was held in Vava'u, Tonga, from 30 April to 2 May 2019.

ABSTRACT

Tonga's Special Management Area (SMA) programme was created under the 2002 Fisheries Management Act to help address overfishing and the various threats that relate to the decline of coastal fishery resources that local communities depend on for their living. As a result of the Act, a designated coastal community is able now to be allocated an SMA that it can manage. Since the SMA programme's inception more than ten years ago, approximately 40 SMA areas are managed by local communities.

This is the Second National Workshop within which space experiences and lessons learned were shared with regard to the SMA programme. Close to 140 participants from across Tonga included those from SMA communities as well as from relevant government ministries, magistrates, civil society organizations, non-governmental organizations, donors and regional and international partners. Also shared were the challenges faced in an effort to seek ways in which to overcome them so as to strengthen not only the SMA programme but also Tonga's coastal fisheries management process.

One of the key outcomes from the workshop is the need to improve the role of management and compliance of SMA communities by further increasing awareness and understanding of the programme and strengthening the capacity and resources to do so. Recommended options for developing alternative livelihood opportunities are essential and complementary to SMA activities, including ecotourism activities and aquaculture development. Of particular note is the need to further strengthen collaboration and partnerships between key stakeholders supporting the programme.

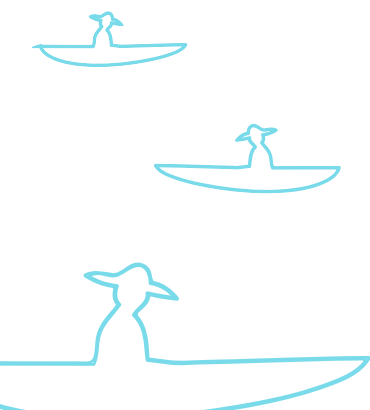
Contents

Preparation of this document	iii
Acknowledgements	vi
Abbreviations and acronyms	vii
Executive summary	xi
Context and background	1
Opening of the workshop	3
Setting the scene: Overview of the SMA programme	3
Panel session 1: Community benefits and challenges in relation to the SMA programme	4
Panel session 2: Leadership, decision-making and awareness for Parliament members	5
Panel session 3: Strengthening the SMA process	6
Regional experience on community-based fisheries management – the case of Fiji	7
Sustainable community livelihoods and aquaculture	8
Panel session 4: Relevant government Ministries and their roles in the SMA programme	9
Monitoring, control, surveillance and enforcement of Special Management Areas	10
Panel session 5: Dialogue with SMA partners and donors	11
Field trip to the 'Ovaka Special Management Area	13
Technical support from the Food and Agriculture Organization to the SMA programme	14
Legal proceedings in relation to Special Management Areas	14
Community scenarios of legal proceedings with regard to Special Management Areas	16
Summary of outcomes and recommendations	17
Appendix 1: Workshop agenda	19
Appendix 2: Opening remarks by the Honourable Minister for Fisheries, Semisi Fakahau	21
Appendix 3: Attendance list	49

Acknowledgements

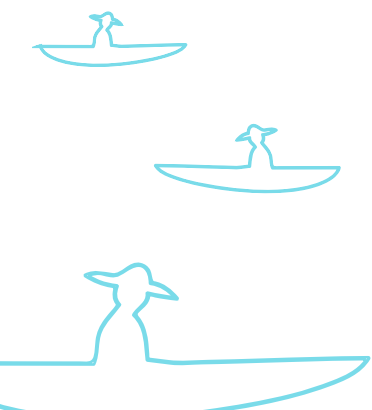
The workshop was organized by the Ministry of Fisheries of the Kingdom of Tonga, with the support of the Food and Agriculture Organization of the United Nations; The Pacific Community (SPC) through the Pacific-European Marine Partnership (PEUMP) programme; Waitt Institute; Mainstreaming of Rural Development Innovation; Vava'u Environmental Protection Association; and the Strengthening Protected Area Management Project (SPAM) under Tonga's Ministry of Meteorology, Energy, Information, Disaster Management, Environment, Climate Change and Communications.

Special acknowledgement is extended to the Hon Minister of Fisheries, Semisi Fakahau. Gratitude is extended to the Members of Parliament; Chief Magistrate; district and town officers of SMA communities; representatives from government, civil society and non-governmental organizations; and regional and international partners for their active participation at and contribution to the workshop. Special thanks is given to staff from the Ministry of Fisheries and the Vava'u Environmental Protection Association who worked behind the scenes in preparation of this workshop. Appreciation is extended to the 'Ovaka Community for their hospitality in making the field trip such a memorable day.



Abbreviations and acronyms

CCMC	coastal community management committee
CCMP	coastal community management plan
CEAFM	community-based ecosystem approach to fisheries management
CSFT	Civil Society Forum of Tonga
CSO	civil society organization
FADs	Fish Aggregating Devices
FAO	Food and Agriculture Organization of the United Nations
FHR	Fish Habitat Reserve
FLMMA	Fiji Locally Managed Marine Area Network
MEIDECCC	Ministry of Meteorology, Energy, Information, Disaster Risk Management, Environment, Climate Change and Communication
MIA	Ministry of Internal Affairs
MoF	Ministry of Fisheries
MORDI	Mainstreaming of Rural Development Innovation
NGO	non-government organization
SMA	Special Management Area
SPAM	Strengthening Protected Area Management
SPC	The Pacific Community
VEPA	Vava'u Environmental Protection Association



Executive summary

The Tonga Fisheries Management Act was endorsed in 2002 under the Ministry of Fisheries (MoF), which mandates local communities to actively engage in the management of their own coastal or nearshore fishery resources by way of Special Management Areas (SMA). The SMA programme is considered an ecosystem-based management approach to restore marine resources and habitats, adaptation to climate change and support the development of alternative livelihoods, such as aquaculture and ecotourism. The SMA programme was implemented as a result of a sharp decline in coastal fishery resources, threatening the livelihood of communities and their fishers. Since the first SMA programme was implemented in ‘Oua, Ha’apai, 40 communities throughout the Kingdom of Tonga (hereon Tonga) have designated SMAs within which there are permanent no-take Fish Habitat Reserves (FHR).

The Second National Workshop on Special Management Areas: Lessons Learned was held in Vava’u, Tonga, on 30 April to 2 May 2019. The workshop was attended by 138 participants including the Hon Minister for Fisheries and representatives from Parliament; SMA communities from Tongatapu, Vava’u, Ha’apai and ‘Eua; government ministries; magistrates; members of civil society organizations (CSO); non-governmental organizations (NGO); and regional and international partners from the Food and Agriculture Organization (FAO) of the United Nations and The Pacific Community (SPC).

The objectives of this three-day workshop are to increase the collective understanding and awareness of SMAs and the links to wider ocean governance in Tonga; clarify the foremost measures of support for SMAs to strengthen their management, improve compliance and enforcement of procedures; and build a wider network of SMA support and collaboration between government, donors, partners, and CSOs.

The following summarizes the main outcomes and recommendations of the workshop.

Improvement of community management

- Increase the knowledge and awareness of communities in Tonga about the SMA programme.
- Host meetings on an annual basis regarding the SMA programme.
- Clarify regulations and CCMPs to strengthen community management.
- Improve engagement and collaboration between SMAs and neighbouring communities to ensure that CCMPs are followed.
- Town Officers to work closely with their communities in following CCMPs.
- CCMCs to work closely with the MoF in following CCMPs.
- Encourage SMA communities to conduct low-budget activities to benefit their SMAs and marine environment (e.g. planting of coastal trees and waste clean-up programmes).
- There is still some feeling that SMA regulations may restrict the freedom and rights of people (i.e. to fish or to access fishing areas) under the Constitution of Tonga.

Strengthening of enforcement and compliance

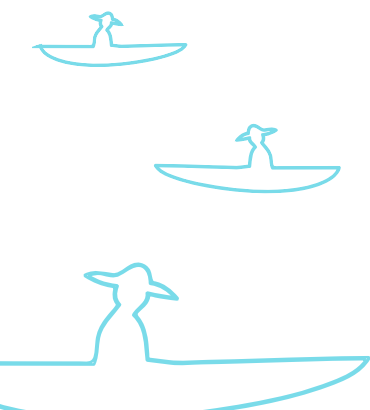
- Support and encourage ways in which to help reduce conflict between SMA and neighbouring communities.
- Conduct training for SMA communities and provide necessary resources for enforcement (e.g. patrol boats and relevant equipment).
- Engage police in SMA regulation trainings and enforcement programmes.
- Improve the capacity of SMA communities to collect evidence on illegal activities that is required to support police and judiciary processes.
- Identify requirements to enable the review and adaptation of SMA regulations based on resources and application.
- Enhance the GPS coordinates for SMA and FHR boundaries (longitude and latitude) on maps.
- Determine and address the impacts on SMA areas, particularly on neighbouring communities and their livelihoods.

Support for alternative livelihoods to generate income and reduce fishing pressure on reefs (for the MoF to lead and/or facilitate)

- Develop alternative activities that will generate income to support communities with an SMA, such as ecotourism activities (e.g. whale watching, snorkeling in no-take FHRs).
- Explore the rules for permitting non-extractive tourism activities in FHRs and charge an entry fee.
- Promote agriculture (e.g. kava and pandanus planting) and livestock activities.
- Increase aquaculture programmes, particularly for sea cucumber, seaweed (*limu tanga'u*) and giant clams.
- Develop and engage in alternative fishing practices for deep-water fishing.
- Promote traditional fishing practices that are sustainable, such as fishing by noose (*no'o 'anga*) and octopus lure (*maka feke*).

Further strengthening of partnerships by stakeholders

- Improve collaborative partnerships between line government ministries and departments: Fisheries; Environment and Climate Change; Crown Law; Police; Tourism; Lands, Survey and Natural Resources; and Internal Affairs.
- Clarify the roles of government ministries and their respective projects to prevent duplication, overlap, confusion or conflict.
- Seek funding that can be provided directly to communities to support their SMA programmes.
- Recognize that partnerships between communities, government, donors, local civil societies and non-government organisations are significantly important for the success of SMAs. Increase and improve communication between all parties so as to benefit community management.



Teuteu 'O E Tohi Ni

Ko e tohi ni 'oku ne 'omai e fakaikiiki 'o e ngaahi me'a na'e fakahoko lolotonga e Fakataha Fakafonua ki he Feitu'u Pule'i Makehe (SMA) – Ngaahi Lesoni Kuo Tau Ako, 'a ia na'e fakahoko 'i Vava'u, Tonga, mei he 'aho 30 'o 'Epeleli ki he 'aho 2 'o Me, 2019.

PUIPUITU'A

Ko e Polokalama Feitu'u Pule'i Makehe, na'e fa'u ia 'i he malumalu 'o e Lao ki he Pule'i 'o e Toutai 2002 ke tokoni ki hono siofi e toutai ta'e-fakapotopoto mo e ngaahi fakafe'atungia ki he holofa ko ia 'a e ngaahi koloa 'a e toutai, 'a ia 'oku fakafalala ai e ma'u'anga mo'ui 'a e ngaahi kolo. 'I he Lao, ko ha kolo kuo fili ko ha kolo matatahi, 'oku malava ke vahe'i ko ha Feitu'u Pule'i Makehe ki he taumu'a ke pule'i 'e ha kolo matatahi. Talu hono fokotu'u e polokalama Feitu'u Pule'i Makehe 'i he ta'u 'e 10 kuo hili, kuo laka hake 'i he ngaahi Feitu'u Pule'i Makehe 'e 40 kuo fokotu'u ke pule'i 'e he ngaahi kolo.

Ko hono ua eni 'a e Fakataha Fakafonua ki he Feitu'u Pule'i Makehe - Ngaahi Lesoni Kuo Tau Ako, 'a ia nae tanaki ai e ngaahi taukei mei he kau ma'u fakataha, na'e ofi he toko 140 mei he ngaahi kolo Feitu'u Pule'i Makehe 'i he kotoa 'o Tonga, ngaahi Potungau Fekau'aki 'a e Pule'anga, kau Fakamaau, Sosaieti Sivile, ngaahi kautaha 'ikai fakapule'anga (NGOs), ngaahi kautaha fakapa'anga kae pehe ki he ngaahi kupu fekau'aki fakalotofonua mo fakatu'apule'anga foki.

Ko e taha 'o e ngaahi fokotu'u tefito mei he fakataha, ko e fiema'u ke toe fakalelei'i hono founga pule'i pea mo e fatongia fakalao 'a e ngaahi kolo Feitu'u Pule'i Makehe, hange ko hano fakalahi hono tokangaekina mo hono mahino'i 'o e ngaahi ngaue fakalao. 'Oku mahu'inga foki ke fokotu'u mo ha ngaahi faingamalie ma'u'anga mo'ui kehe ke ne fetongi pe tokoni ki he ngaahi ngaue ki he Feitu'u Pule'i Makehe, 'o kau ai e ngaahi ngaue fakatakimamata, faka-pa'anga mo hono fakalalakaka'i hono faama'i e ngaahi me'a mo'ui 'i tahi. Na'e toe pou pou lahi foki 'a e fakataha ni ki hono toe fakaivia 'a e ngaue fakataha mo e ngaahi kupu fekau'aki mo e ngaahi kautaha tefito 'oku nau pou pou ki he polokalama Feitu'u Pule'i Makehe.

Kanotohi

Teuteu 'o e tohi ni	xi
Ngaahi fakamalo	xiii
Fakama'opo'opo fakalukufua	xiv
Kanotohi mo e puipuitu'a	25
'Polokalama huufi 'o e fakataha	27
Fakanofonofo: Sio fakalukufua ki he polokalama Feitu'u Pule'i Makehe	27
Talanga 1: Ngaahi lelei mo e ngaahi pole 'i he polokalama Feitu'u Pule'i Makehe	28
Talanga 2: Founa taki/ fai tu'utu'uni mo e founa tokangaekina e ma'u mafai 'a e pule'anga	30
Talanga 3: Fakaivia 'o e ngaahi ngaue Feitu'u Pule'i Makehe	31
Taukei mei he ngaahi fonua kaunga'api 'i hono pule'i fakakolo 'o e toutai - ngaahi taukei mei fisi	32
Ngaahi ma'u'anga mo'ui 'oku tu'uloa mo hono Faama'i 'o e me'a mo'ui 'i tahi	33
Talanga 4: Ngaahi otungaue felave'i 'a e pule'anga pea mo honau ngaahi fatongia 'i he polokalama SMA	34
Muimui'i, pule'i, le'ohi mo hono fakamamafa'i e lao Feitu'u Pule'i Makehe	35
Talanga 5: Fepotalanoa'aki mo e ngaahi kupu fengau'e'aki mo e ngaahi kautaha fakapa'anga	37
'A'ahi ki he Feitu'u Pule'i Makehe 'o e kolo ko Ovaka	38
Tokoni fakatekinikale mei he FAO ki he polokalama Feitu'u Pule'i Makehe	39
Tu'unga fakalao 'o e ngaahi Feitu'u Pule'i Makehe	39
Ngaahi senalio mei he kolo 'i he ngaahi ngaue fakalao	41
Ngaahi ola mo e ngaahi fokotu'u mei he fakataha	42
Fakalahi 1: 'Asenita 'o e fakataha	45
Fakalahi 2: Lea fakaava 'a e 'Eiki Minisita Toutai, Semisi Fakahau	47
Fakalahi 3: Kau ma'u fakataha	49

Ngaahi fakamalo

Ko e fakataha ni na'e fokotu'utu'u ia 'e he Potungaue Toutai 'a Tonga mo e pou pou fakalotofonua pea mei tu'apule'anga mei he Kautaha Fakamamani Lahi ki he Me'atokoni mo e Ngoue 'a e Ngaahi Pule'anga Fakatahataha (Food and Agriculture Organization of the United Nations (FAO)), Kautaha 'a e Ngaahi Fonua 'o e Pasifiki (The Pacific Community (SPC), 'o fakafou 'i he polokalama 'a e PEUMP, 'a ia ko e polokalama tokoni fakapa'anga ki he Pasifiki mei he Kautaha Fakatahataha 'a 'Iulope (European Union) mo Suiteni (Sweden), ki he ngaahi ngaue ki tahi pe 'oseni), Waitt Institute, Mainstreaming of Rural Development Innovation, MORDI Tonga, Vava'u Environmental Protection Association (VEPA) pea mo e Poloseki Fakaivia hono Pule'i e ngaahi 'Elia Malu'i (SPAM) 'a e Potungaue MEIDECCC.

'Oku 'oatu 'a e fakamalo makehe ki he 'Eiki Minisita Toutai, Semisi Fakahau, kau memipa Fale Alea, 'Eiki Fakamaau Lahi, kau Pule Fakavahe mo e kau 'Ofisa Kolo 'o e ngaahi kolo Feitu'u Pule'i Makehe, mo e kau fakafofonga mei he Pule'anga, Sosaieti Sivile mo e ngaahi kautaha 'ikai fakapule'anga (NGOs), ngaahi kupu fengau'e'aki fakalotofonua mo fakatu'apule'anga foki, 'i ho'omou kau mai mo e tokoni ki he fakataha. Fakamalo lahi ki he kau ngaue 'a e Potungaue Toutai mo e VEPA 'i he fakahoko fatongia lolotonga hono teuteu e fakataha ni. Fakamalo loto hounga'ia mo'oni ki he kolo ko 'Ovaka ki he talitali lelei hono fakahoko atu 'a e 'a'ahi 'a e fakataha ni, 'o hoko ia ko ha 'aho fakangalongata'a.

Fakama'opo'opo Fakalukufua

'I he 2002, na'e fokotu'u ai 'a e Lao ki he Pule'i 'o e Toutai 'i he malumalu 'o e Potungaue Toutai, 'a ia na'a ne fakamafai'i e ngaahi kolo 'i Tonga ni ke nau pule'i honau matafanga pe ko e koloa 'i honau matatahi, 'o fakafou ia 'i he ngaahi Feitu'u Pule'i Makehe (pe ko e SMA 'i hono fakanounou). Ko e ngaahi Feitu'u Pule'i Makehe, ko e 'unu ia 'a e toutai ki hono tokangaekina e ngaahi koloa 'o 'oseni mo hono ngaahi nofo'anga, matu'uaki e uesia e feliliuaki 'o e 'ea, mo poupou ki hono fakalalakaka'i 'o e ma'u'anga mo'ui makehe mei he toutai, 'o hange ko hono faama'i e me'a mo'ui 'i tahi mo e ngaahi ngaue fakatakimamata 'oku 'ikai ke uesia ai e 'ataakai. Ko e polokalama Feitu'u Pule'i Makehe, na'e fokotu'u ia koe'uhi ko e holo 'a e ngaahi me'a mo'ui 'i he matafanga, mo e ngaahi nunu'a 'oku uesia ai 'a e ngaahi ma'u'anga mo'ui mei he toutai. Talu hono fokotu'u e fuofua Feitu'u Pule'i Makehe 'i 'Oua, Ha'apai, kuo a'u ki he ngaahi kolo 'e 40 'i he 'Otu Tonga ni kuo fokotu'u 'enau Feitu'u Pule'i Makehe 'i he malumalu 'o e Lao, 'a ia 'oku kau ki ai hono fokotu'u 'a e ngaahi Feitu'u Malu'i 'a e Nofo'anga 'o e Ika (FHR) pe 'Elia Tapu.

Ko e fakataha fakafonua hono ua ki he Feitu'u Pule'i Makehe - Ngaahi Lesoni Kuo Tau Ako, na'e fakahoko ia 'i Vava'u, Tonga 'i he 'aho 30 'o 'Epeleli ki he 'aho 2 'o Me, 2019. Ko e fakataha ni na'e kau ki ai e kau ma'u fakataha 'e toko 138, 'a ia na'e kau ai e 'Eiki Minisita Potungaue Toutai mo e kau fakafongia Fale Alea, ngaahi kolo Feitu'u Pule'i Makehe 'i Tongatapu, Vava'u, Ha'apai mo 'Eua, ngaahi Potungaue 'a e Pule'anga, Kau Fakamaau, Sosaieti Sivile, ngaahi kautaha 'ikai fakapule'anga (NGOs), kae pehe ki he ngaahi kupu fengae'aki fakalotofonua mo fakatu'apule'anga mei he Kautaha Fakamamahi Lahi ki he Me'atokoni mo e Ngoue 'a e Ngaahi Pule'anga Fakatahataha (FAO) mo e Kautaha 'a e Ngaahi Fonua 'o e Pasifiki (SPC).

Ko e ngaahi taumu'a 'o e fakataha 'aho tolu ko eni, ke fakatupulaki'i 'a hono mahino'i mo e 'ilo ki he polokalama Feitu'u Pule'i Makehe (SMA) mo 'ene felave'i ki he ngaahi polokalama ki hono pule'i 'o e ngaahi potu tahi 'i Tonga, fakapapau'i e fua totonu hono poupou'i ki hono pule'i 'a e SMA, fakaleleli'i e ngaahi founa fakamamafa'i mo fakahoko 'o e lao, pea ke toe langa'i 'a e ngaahi fetokoni'aki mo e ngaahi fengae'aki ki he polokalama SMA 'a e pule'anga, ngaahi kautaha fakapa'anga, ngaahi kupu fengae'aki mo e sosaieti sivile.

Ko e fakaikiiki eni 'o e ngaahi ola mo e ngaahi fokotu'u lalahi mei he fakataha ni:

Fakaleleli'i 'a e founa pule 'a e kolo (ki he toutai)

- Fakalahi 'a e 'ilo mo e tokanga ki he polokalama Feitu'u Pule'i Makehe ki he kotoa e ngaahi kolo 'i Tonga;
- Fakahoko e ngaahi fakataha fakata'u ki he polokalama Feitu'u Pule'i Makehe;
- Fakamahino'i 'a e ngaahi tu'utu'uni mo e ngaahi palani pule 'a e kolo matatahi (CCMP) ke fakaivia e founa pule 'a e kolo;
- Fakaleleli'i 'a e kau mai mo e fengae'aki 'a e ngaahi kolo Feitu'u Pule'i Makehe mo e ngaahi kolo kaunga'api ke fakapapau'i 'oku muimui'i 'enau ngaahi palani pule (CCMP);
- Ke fengae'aki vaofi mo longomo'ui 'a e kau 'Ofisa Kolo pea mo e kakai 'o e ngaahi kolo ki hono muimui'i 'enau ngaahi palani pule;

- Ke fengau'e'aki vaofi mo longomo'ui 'a e ngaahi Komiti Pule 'o e Kolo Matatahi (CCMC) pea mo e Potungau'e Toutai ki hono muimui'i 'enau palani pule;
- Faka'ai'ai e ngaahi kolo Feitu'u Pule'i Makehe ke fakahoko ha ngaahi ngaue 'oku 'ikai fu'u fakamole pa'anga 'a ia 'e lelei ki honau Feitu'u Pule'i Makehe mo e 'ataakai 'o 'oseni, 'o hange ko e to 'akau 'i he matafanga mo e polokalama fakama'a kolo;
- 'Oku kei 'i ai e ongo'i 'oku hanga 'e he ngaahi tu'utu'uni SMA 'o fakangatangata e tau'ataina mo e totonu 'a e kakai (ke toutai pe hu ki he ngaahi toutai'anga) 'i he malumalu 'o e Lao Konisitutone.

Fakaivia hono fakahoko mo hono fakamamafa'i 'o e Lao

- Poupou mo faka'ai'ai e ngaahi founga 'e tokoni ke fakasi'isi'i e ngaahi fepakipaki 'i he va 'o e ngaahi kolo Feitu'u Pule'i Makehe mo e ngaahi kolo kaunga'api;
- Fakahoko ha ako ki he ngaahi kolo Feitu'u Pule'i Makehe mo foaki ha ngaahi me'a ngaue ke tokoni ki hono fakamalohia e lao, 'o hange ko e ngaahi vaka le'o mo e me'a ngaue ki hono polisi'i 'a e SMA;
- Fakakau e kau polisi 'i he ngaahi ako ki he ngaahi tu'utu'uni 'o e Feitu'u Pule'i Makehe mo e polokalama ki hono fakamamafa'i 'o e lao;
- Fakalelei'i e ivi ngaue 'a e ngaahi kolo Feitu'u Pule'i Makehe 'i hono tanaki e ngaahi fakamo'oni ki he ngaahi ngaue pe toutai ta'efakalao, ke tokoni ki he ngaahi ngaue 'i he tafa'aki 'a e kau polisi mo e fakamaau'anga;
- Fakapapau'i 'a e ngaahi fiema'u ke toe vakai'i 'a e ngaahi tu'utu'uni Feitu'u Pule'i Makehe ke fenapasi mo ha fa'ahinga liliu 'oku hoko 'i he tu'unga 'o e ngaahi me'a mo'ui 'o tahi mo e anga hono ngaue'aki pe toutai'i;
- Fakamahino'i 'i he ngaahi mape 'a e ngaahi tu'u'anga longitute mo latitude (GPS) 'a e ngatangata'anga 'o e ngaahi Feitu'u Pule'i Makehe mo e 'Elia Tapu;
- Fiema'u ke fakamahino'i pea vakai'i e ngaahi uesia 'o e ngaahi Feitu'u Pule'i Makehe, tautautefito ki he ngaahi kolo kaunga'api mo 'enau ma'u'anga mo'ui.

Poupou'i e ngaahi ma'u'anga mo'ui kehe ke tokoni ki he ma'u'anga pa'anga 'a e kolo mo fakasi'isi'i 'a e toutai 'i he tahi mamaha (ke taki 'a hono fokohoko e ngaue ni 'e he Potungau'e Toutai)

- Fokotu'u ha ngaahi ngaue kehe ke tokoni ki he ma'u'anga pa'anga 'a e kakai 'o e kolo mo tokoni ki hono pule'i 'enau Feitu'u Pule'i Makehe, 'o hange ko e ngaahi ngaue fakatakimamata 'oku 'ikai ke uesia ai e 'ataakai: mamata tofua'a, uku 'i he 'Elia Tapu (FHR);
- Fakatotolo'i e ngaahi tu'utu'uni 'oku fiema'u ke fakangofua e ngaahi ngaue fakatakimamata 'oku 'ikai ke ne to'o ha koloa mei 'oseni 'i he 'Elia Tapu pea 'oange mo e totongi;
- Faka'ai'ai e ngoue (hange ko e to kava mo to lo'akau) mo e tauhi e fangamanu;
- Fakalahi e polokalama faama'i 'o e me'a mo'ui 'i 'oseni, tautau tefito ki he faama mokohunu, limu tanga'u mo e vasuva;
- Fakakau mo fokotu'u ha ngaahi founga toutai makehe ki he toutai 'i he tahi loloto;
- Faka'ai'ai e ngaahi founga toutai tukufakaholo 'oku tu'uloa, hange ko e no'o'anga mo e maka feke

Toe fakaivia e fengau'e'aki 'a e ngaahi kupu fekau'aki (ke fakahoko 'e he ngaahi kupu kotoa)

- Fakalelei'i e fengau'e'aki mo e ngaahi kupu fekau'aki 'i he va 'o e ngaahi Potungau'e 'a e Pule'anga: Toutai, 'Atakai, Feliliuaki 'a e 'Ea, 'Ofisi Lao, Polisi, Takimamata, Koloa faka-e-natula mo e Savea mo e Potungau'e Ngaahi Ngaue Fakalotofonua;
- Fakamahino e fatongia 'o e ngaahi potungau'e 'a e Pule'anga mo e ngaahi poloseki ke 'oua 'e fepaki e ngaahi ngaue 'oku fakahoko;
- Kumi ha tokoni fakapa'anga 'e ala foaki hangatonu ki he ngaahi kolo ke poupou ki he'enau ngaue he polokalama Feitu'u Pule'i Makehe;

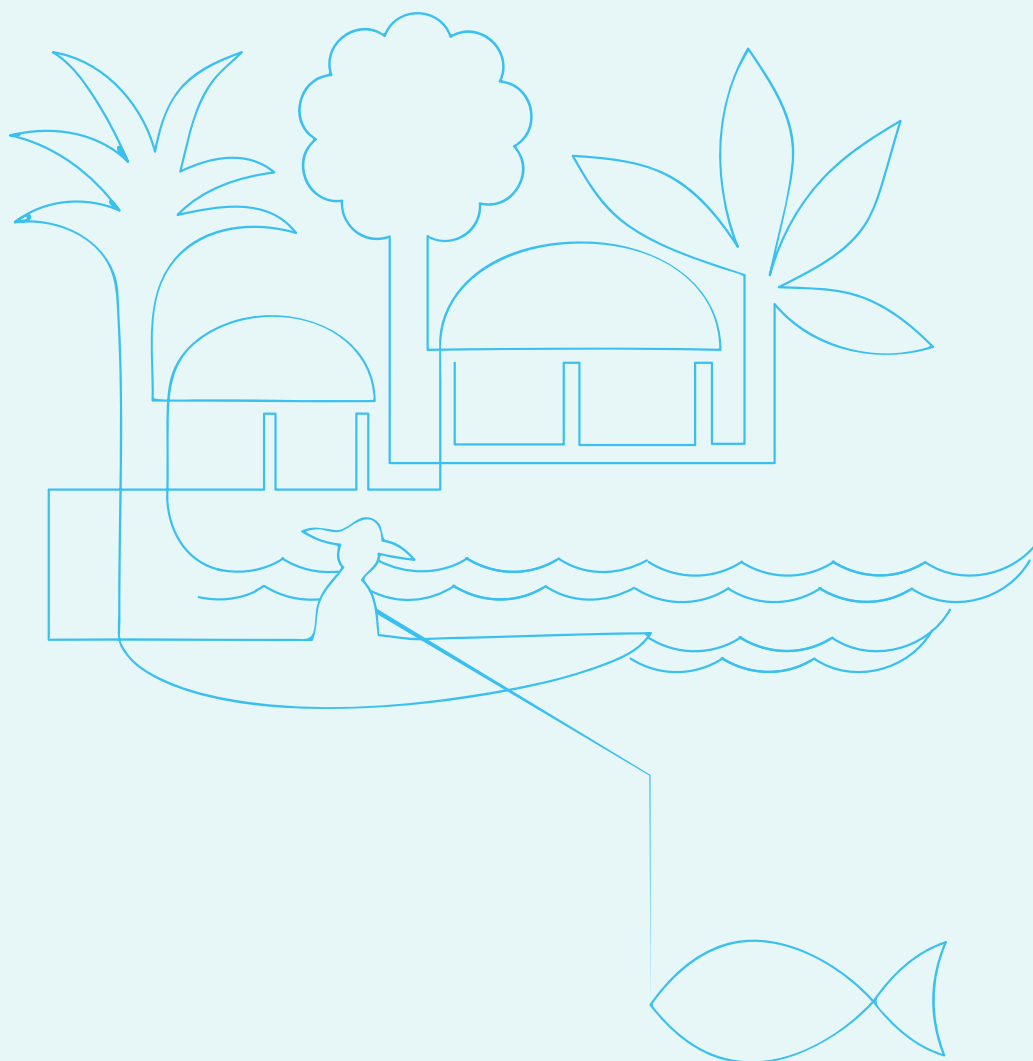
- ‘Oku mahu’inga ‘aupito e fengaue’aki vaofi ‘a e ngaahi kolo, Pule’anga, ngaahi kautaha tokoni fakapa’anga, sosaieti sivile fakalotofonua mo e ngaahi kautaha ‘ikai fakapule’anga ke ola lelei ‘a e ngaahi Feitu’u Pule’i Makehe. ‘E toe leleiangē foki ki he ngaue ‘a e ngaahi kolo, kapau ‘e fakalahi mo fakalelei’i e fetu’utaki ‘a e ngaahi kupu fekau’aki ki he polokalama Feitu’u Pule’i Makehe.



Report of the

**TONGA NATIONAL WORKSHOP ON SPECIAL
MANAGEMENT AREAS – LESSONS LEARNED**

Vava'u, Tonga, 30 April–2 May 2019



Context and background

Coastal fishery resources are heavily utilized (or fished) throughout the Kingdom of Tonga (hereon Tonga) for subsistence and domestic commercial fishing. Over the years, the human population has increased and boats and fishing equipment have modernized, leaving Tonga's marine resources under extreme pressure from overfishing. Coastal reefs adjacent to shore and/or near communities are considered most vulnerable given their close proximity to populated areas. Furthermore, unsustainable practices, including the use of aukava (a plant form of cyanide used to poison fish), the increase of unsustainable tourism developments and the impacts of climate change, place marine habitats and organisms under further stress, creating great hardship for community livelihoods and sustainable fisheries management. During the twentieth century, Tonga's coastal and ocean waters were considered open access to all Tongans; this further reduced marine resources and habitats to unsustainable quotas, thus threatening the sustainability of oceans and community livelihoods.

The new 2002 Fisheries Management Act provides a mandate for local communities to actively manage their own coastal fishing areas by way of Special Management Areas (SMA). This new form of fisheries management primarily supports the role of coastal communities to protect, restore and sustainably use fishery resources within their own coastal areas. The SMA programme supports various complementary activities to develop and strengthen alternative livelihoods and adapt to the impacts of climate change. Under the programme, communities work closely with the Ministry of Fisheries (MoF) and partners to develop a coastal community fishery plan (CCMP) for their respective SMA(s). Coastal Communities Regulations for the establishment and implementation of SMAs were developed in 2009, and include the designation of SMA and permanent no-take FHR boundaries within SMAs.

Since 2002, approximately 40 SMAs have been established throughout the 'Eua, Tongatapu, Ha'apai and Vava'u islands. There are many more applications on the waitlist.

TABLE 1
List of Special Management Areas in Tonga and year of establishment, as at 30 May 2019

No.	Island group	Community	Year established	No.	Island Group	Community/Island	Year established
1	Ha'apai	'O'ua	2006	21	Vava'u	Ofu	2017
2	Ha'apai	Ha'afeva	2007	22	Vava'u	Koloa	2017
3	Vava'u	Ovaka	2008	23	Ha'apai	Mango	2017
4	Ha'apai	Felemea	2008	24	Ha'apai	Fonoifua	2017
5	Tongatapu	Atata	2008	25	Ha'apai	Matuku	2017
6	Ha'apai	Nomuka	2011	26	Tongatapu	Pangaimotu	2017
7	Ha'apai	Tonumea & Kelelesia	2011	27	Tongatapu	Ha'atafu	2017
8	Vava'u	Taunga	2013	28	Tongatapu	Holonga	2017
9	Tongatapu	Fafa	2014	29	Vava'u	Holeva	2018

No.	Island Group	Community/ Island	Year established	No.	Island Group	Community/Island	Year established
10	Ha'apai	Kotu	2015	30	Vava'u	Kapa	2018
11	Tongatapu	Kolonga	2015	31	Ha'apai	Lofanga	2018
12	Tongatapu	Nukuleka	2016	32	Ha'apai	Uiha	2018
13	Tongatapu	Lapaha	2016	33	Ha'apai	Mo'unga'one	2018
14	Vava'u	Utulei	2017	34	Ha'apai	Muitoa	2018
15	Vava'u	'Utungake	2017	35	Ha'apai	Ha'ano	2018
16	Vava'u	Talihau	2017	36	Ha'apai	Pukotala	2018
17	Vava'u	Falevai	2017	37	Ha'apai	Fakakai	2018
18	Vava'u	'Eueiki	2017	38	Ha'apai	Faleloa	2018
19	Vava'u	Lape	2017	39	'Eua	Houma	2018
20	Vava'u	Hunga	2017	40	'Eua	Tufuvai	2018

Source: Tonga Ministry of Fisheries.

The First National Workshop on SMAs: Lessons Learned was held in Ha'apai in 2015 to “raise the awareness of SMA communities to the SMA programme and further develop the roles of community management”. With the rapid and growing demand for SMAs across Tonga, including and now approximately 40 communities engaged in the programme, the MoF – to keep the momentum – has organized the Second National Workshop from 30 April to 2 May 2019. The workshop would focus on the key challenges of the SMA programme since inception more than ten years ago. It would provide an essential platform and the space for dialogue between SMA communities, the MoF and other key stakeholders to identify solutions to the challenges that have been identified, with next steps to further strengthen the programme and its contribution to sustainable food security and to the livelihoods of the people of Tonga.

DAY ONE – 30 April 2019

OPENING OF THE WORKSHOP

The Honourable Minister for Fisheries, Semisi Fakahau, officiated in the opening of the workshop and acknowledged the relevance of coastal fisheries to community livelihoods, food security and social well-being. He noted that coastal resources and habitats continue to face the threats of overfishing and the use of more advanced fishing gear, forcing fishers as a result to move further offshore to seek better fishing grounds. He added that the MoF is under-resourced and that the effective management of fisheries across Tongan waters cannot be achieved by the Ministry alone. Legislation and a framework are necessary to ensure that effective management of coastal fisheries is carried out by local communities through the SMA programme. (See Appendix 2 for the Hon Minister’s speech.)

The workshop was attended by nearly 140 participants, including representatives from SMA communities in Tongatapu, Ha’apai, Vava’u and ‘Eua islands; members of Parliament; district officers; relevant government ministries; magistrates; civil society organizations (CSO); non-government organizations (NGO); and regional and international organizations. The workshop agenda is provided in Appendix 1 and the list of workshop participants is provided in Appendix 3

SETTING THE SCENE: OVERVIEW OF THE SPECIAL MANAGEMENT AREA PROGRAMME

Dr Siola’a Malimali of MoF provided an overview of the SMA programme and its critical role in the effective management of coastal fishery resources, as mandated under the 2002 Fisheries Management Act. Tonga’s first SMA was established in 2006 in ‘O’ua, Ha’apai and, by 2018, 40 SMAs were formed across the Tongatapu, ‘Eua, Ha’apai and Vava’u islands. He added that over the years, SMA communities continue to face significant challenges such as conflicts with other communities and a continual depletion of resources. Dr Malimali clarified the two main types of SMAs as those managed by communities and those that are managed jointly by MoF for conservation purposes (e.g. Fafa Island SMA).

Dr Malimali highlighted that bringing together the key SMA stakeholders to this workshop would help achieve the following:

- Expand the collective understanding of and awareness about SMAs and the linkages to the Tonga’s wider ocean governance;
- Identify the benefits and challenges within the SMA programme and establish what works and what does not work.
- Discuss on how best to support SMA communities to improve enforcement, compliance and management of SMAs.
- Discuss the next steps for the Government of Tonga, potential donor partners, CSOs and NGOs in their support of SMAs.

- Build a network of support for the SMA programme from within and outside of Tonga.

A summary of the main plenary discussions are as follows:

- With regard to the benefits of community management, a couple of communities (Nukuleka and Talihau) shared some positive experiences in relation to the programme. These included, as a result of their SMA management, the supply of more fish and ark clams in their waters and the ability to cease fishing practices that are destructive, including sand mining. The increase in marine resources due to such effective management is deemed to create tourism opportunities.
- In describing the SMA programme and how new SMAs are being established, the MoF indicated that there are clear guidelines for communities within the SMA programme. Once a CCMP has been developed, the community must present it to neighboring communities for discussion and agreement. This should be followed by a public announcement in the media (radio and newspapers).
- The development/support for alternative livelihoods was noted as an essential component of the SMA programme. The majority of partner programmes support this (e.g. planting of pandanus for women's weaving; agriculture and farming; and offshore longline fishing).

PANEL SESSION 1: COMMUNITY BENEFITS AND CHALLENGES IN RELATION TO THE SPECIAL MANAGEMENT AREA PROGRAMME

Panel: Mr Manase Tu'alau, Town Officer of 'O'ua (Ha'apai); Mr Peni Lalakai, Town Officer of Ha'afeva (Ha'apai); Mr Sikula Fonua, SMA Coastal Community Management Committee (CCMC) and Chairperson of 'Atata (Tongatapu); and Mr Ma'afu Mahe, Town Officer of Taunga (Vava'u).

Facilitator: Eileen Fonua (MoF).

This session gathered valuable SMA programme knowledge relating to the benefits to and challenges facing communities with the most experience. The panel comprised three town officers who also are chairpersons of their respective CCMC; they originate from 'O'ua (13 years of programme experience), Ha'afeva (12 years), 'Atata (11 years) and Taunga (6 years).

Question 1: Explain one or two key benefits and challenges you have experienced since joining the SMA programme

- **'O'ua community:** Since the SMA was established, it has been possible to regulate the fishing activities of community members, and fishers from outside are not allowed to access the SMA¹.
- **Ha'afeva community:** Fishers with better fishing skills from Tongatapu used to fish in our area. Since this coastal fishing area is very small, the SMA has helped protect and conserve this community's resources. Outside fishers are now banned from fishing in the area. It is beneficial to the community to manage its own coastal resources.
- **'Atata community:** Previously, fishers from Tongatapu came to this island with drive-in nets using coconut leaves (*uloa*). The use of these nets exhausted the island's marine resources. 'Atata, since 2008, has been able to reduce unsustainable fishing practices and it has recovered its fish population. The SMA boundary has indirectly developed the community. Other benefits have been possible as a result of collaboration and the support from various organizations.
- **Taunga community:** Previously, marine resources were abundant until they gradually decreased over the years due to open-access fishing. Since the SMA

¹ Defined by their CCMP, it usually refers to people who are not from the community.

programme, the community has been content with the replenishment and improvement of fishery resources and the health of its coastal habitats.

Question 2: Explain one or two issues faced by your community and explain ways in which to solve them (or how you have resolved them)

- Panelists stated that the monitoring of SMAs and the enforcement process are the most serious challenges. Resources, such as a patrol boat, are essential to effectively carry out these roles. ‘O’ua community representative stated that it had applied to the Mainstreaming of Rural Development Innovation or MORDI, for a patrol boat and had been granted one. Other panelists raised the same issue and sought how to gain this assistance.
- ‘O’ua and ‘Atata community representatives reported the continual loss of boundary markers (buoys) that may have been cut off by neighboring communities.
- Ha’afeva community representative stated that the island has to cope with unregistered fishers in its SMA, which raises conflict within the community. By working together and following the SMA regulations, the issue has improved.

The key plenary discussions are as follows:

- **Koloa community** (2 years in the programme): Communities in the Eastern District of Vava’u primarily earn their living from fishing in our coastal area. Since the establishment of its SMA, the community has worked with neighbouring ones peacefully.
- **Nomuka community** (8 years): Larger fish and trochus have been sighted in its SMA; two men, who damaged the FHR, area were successfully prosecuted.
- **Talihau community** (2 years): The island is in need of monitoring equipment. Dr Malimali added that during Talihau’s Green Day in 2018, the community collected and placed various species of fish in its FHR. In an effort to develop a Blue Day initiative, it was suggested that communities should place four or five species of fish in each FHR and ensure that there are community police or wardens to help prevent theft.
- **Kolomotu’a community** (a non-SMA community): It was suggested that sailboats be used for enforcement purposes.

PANEL SESSION 2: LEADERSHIP, DECISION-MAKING AND AWARENESS FOR PARLIAMENT MEMBERS

Panel: Hon Minister for Fisheries - Semisi Fakahau, Members of Parliament: Mr Siaosi Sovaleni (Tongatapu Constituency 3), Mr Samiu Vaipulu (Vava’u Constituency 15) and Mr Vatau Hui (Niuas).

Facilitator: Dr Vailala Matoto.

The purpose of this session was to invite Members of Parliament to raise issues or areas of interest relating to the SMA programme at the highest level within Cabinet. Their feedback is essential to enable the strengthening of SMAs, given that they represent the Tongan people and are the leaders who take part in the country’s political decision-making and claim to support the SMA programme and its community management.

The session began with a discussion on how to improve collaboration at the levels of government, community and partnership. A summary of this is as follows:

- **Minister for Fisheries:** From a decision-making perspective, there have been issues in the designation and establishment of SMAs, especially in the case of Tongatapu. There is an increase in migration from outer islands (i.e. Niuas, Ha’apai and Vava’u) of people whose primary livelihood depends on fishing. It is difficult for

them to accept SMAs - which require the closing off of fishing zones - in areas such as Pangaimotu and 'Eueiki. There is a need for them to become more aware and engage in discussions to understand the benefits of SMAs. In terms of the Nukuleka SMA, there is good progress so far. In addition, Fanga'uta now has shown interest in the SMA programme.

- **Mr Sovaleni:** It is important to take into account the benefits of SMAs, as well as the impacts on people's or fishers' livelihoods (e.g. those from neighbouring communities). Communities need sufficient resources to monitor and enforce their SMAs. Community police or wardens are useful and they, also, would be able to share the resources and efforts of adjacent communities.
- **Mr Vaipulu:** Ongoing discussions and outreach are essential to ensure that new concepts are well understood. This also applies to the SMA programme whose aim it is to promote the sustainable use and management of fishery resources not only for today but also for the future.
- **Mr Hui:** He fully supports the SMA programme and would like district officers and town officers from Niua to be invited to SMA awareness programmes so they can learn and potentially take part.

Question: What would be your advice to improve the collaboration of communities and how would you support the Special Management Area programme?

- Communication and consensus are important in order to prevent or resolve conflicts between communities and fishers.
- Fishing regulations should continue to be strictly enforced to protect resources.
- Laws should be adhered to in order to support the SMA programme; for instance, those laws that govern town and district officers alike.
- District and town officers of SMA communities must ensure transparency and hold discussions with neighbouring communities to share experiences with regard to their respective SMAs.
- Meetings should be held on an annual basis to discuss SMAs, the issues and resolutions.
- Opportunities should be explored to support SMAs, such as charging a visitor/tourist entry fee.
- Requests or applications for community police support should be submitted to Parliament.

Key plenary discussions are as follows:

- **Nukuleka community** was concerned that illegal fishers are not being brought to justice, as exemplified by a particular case. An update of this case was provided by the Assistant Crown Counsel, Mr Joe Fifita, who encouraged communities to visit the Attorney General's Office regarding the type of case that should be addressed.
- **Vava'u Environmental Protection Association (VEPA)** showed concern about the chance of success that SMA communities might gain in court; he urged the need to improve enforcement so that communities have more of a chance of winning. It was recommended that SMA communities first alert the Police Department so that a case can be taken to court. The process is based on 2009 Fisheries (Coastal Communities) Regulations, Section 5.
- A request was made to increase the MoF budget so that the SMA programme can benefit from more staff and resources

PANEL SESSION 3: STRENGTHENING THE SPECIAL MANAGEMENT AREA PROCESS

Panel: Mr Napa'a Halatanu, Town Officer of Hunga; Mr Koli Tala'aho Fituafe, Town Officer of Matuku; Mr Mina'ati Fifita, Town Officer of Koloa; Mr Viliami Latu, Town Officer of 'Utulei; Mr Tevita Tuiaki,

Town Officer of Holonga; and Mr Alaiwa'a Moimoi, Town Officer of 'Ofu. Facilitator: Ms Salote Koloamatangi, MoF.

This session included town officers (also chairpersons of their respective CCMC) to share their views on the success of SMAs and what further assistance is required to improve monitoring and compliance, as well as the implementation of CCMPs. The group specifically represented SMAs that were designated in 2017.

Question 1: How can the Special Management Area programme be improved and how can its outcomes be enhanced?

- **Matuku community:** Fishing is their main source of livelihood; initially the village did not agree to the SMA programme. It was later recognized, however, that it is the best way forward for the community as it will benefit the children and future generations. There is a need to encourage good relationships with neighbouring communities so that they, also, can take into account the benefits of the SMA programme.
- **'Ofu community:** The community should learn from those with more SMA experience.
- **Hunga community:** An SMA plan should be developed within the community and followed accordingly.
- **'Utulei community:** The town officer must work closely with the community. By having cooperated with each other, marine species have improved (e.g. giant clams and thorny oysters). It also is important to develop alternative livelihoods to reduce fishing activities, such as the planting of kava.
- **Koloa community:** A sea cucumber farm should be established in Koloa.
- **Holonga community:** Discussions should be held with communities about the SMA programme.

Question 2: What are your community's needs to help fulfill and implement your coastal community management plan?

- It is important to work together to implement the programme and share its benefits.
- There is a need to develop alternative livelihoods to reduce fishing in SMAs, since some families have no other source of living other than from fishing (e.g. funding to enable alternative livelihood options).
- The Hunga, Matuku, and 'Utulei communities submitted a request for a patrol boat; this was latter followed by the Makave, Mango, Fonoï and Koloa communities.
- Ha'atafu community requested a tractor for fishing families to source their living from agriculture.

REGIONAL EXPERIENCE ON COMMUNITY-BASED FISHERIES MANAGEMENT – THE CASE OF FIJI

This session was delivered by representatives from The Pacific Community (SPC) (Mr Watisoni Lalavanua, Community Based Fisheries Management Officer); and the Fiji Locally Managed Marine Area (FLMMA) Network (Mr Kiniviliame Ravonoloa, Field Engagement Officer and Community Representative).

Mr Lalavanua of SPC provided an overview of the importance of coastal fisheries in the Pacific Region and why a community-based approach to fisheries management is needed. Coastal fisheries provide 50-90 percent of vital protein in community diets and thus, restoring community fisheries is crucial for human health as well as for the ocean. He described the human impacts on marine ecosystems and fish stocks, such as overfishing of coastal fishery resources, pollution and run off, poor land management

and unsustainable fishing practices. Coastal fisheries management is not about managing fish; it is about supporting people in communities and, therefore, all segments of the community including men, women, youth and people with disabilities, should be encouraged to participate in a community-based ecosystem approach to fisheries management (CEAFM). The approach has represents three components: fisheries management, ecosystem management and a community-based management perspective.

Through the Pacific-European Union Marine Partnership programme, SPC supports 15 African, Caribbean and Pacific member countries, including Tonga, in the implementation of the CEAFM approach, Programme activities include:

- support of and mentoring in fisheries management;
- activities at the subnational and community levels;
- communication and the production and dissemination of information and materials; and
- community outreach and adaptation.

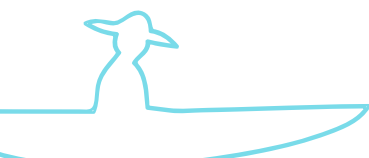
In sharing the practical and successful experiences of the region, Mr Ravonoloa described Fiji's Locally Managed Marine Area (FLMMA) Network which was established in 2000 between communities (inshore waters, or qoliqoli, owners), NGOs and government. The network has expanded rapidly to what are now 466 no-fishing or no-take areas within 135 traditionally managed areas, covering 79 percent of Fiji's coastal waters. The FLMMA Network aims to address key issues, including overfishing and destructive fishing methods, the explosion of Sargassum seaweed, waste management systems, responsible leadership for caring for the environment, and the unsustainable supply of drinking water.

Mr Ravonoloa explained how the FLMMA Network was designed with the application of Community-based Adaptive Management (CBAM) approaches, whereby local stakeholders are able to develop, implement, monitor and evaluate a project. Elements of the project include the placement of fish wardens, holding responsible fishing awareness campaigns, upgrading water supplies, implementing solid waste management practices (e.g. composting, waste collection and recycling), organizing beach and coastal area clean ups, and establishing wastewater management. He added that the livelihood and environmental benefits resulting from the FLMMA Network are extensive, including an increase of coral cover and coral diversity, growth in targeted fish species and a 500 percent rise in fish biomass. There now are higher levels of herbivorous species (e.g. parrotfish, surgeonfish) and reproductive fish stocks. Tourism and income-generating opportunities also are possible through the Network, such as visits by students, researchers and tourists alike to explore and assist with community development activities.

SUSTAINABLE COMMUNITY LIVELIHOODS AND AQUACULTURE

Presenter and facilitator: Dr Siola'a Malimali, MoF.

Dr Siola'a Malimali presented an overview of current livelihood and aquaculture activities undertaken by the MoF for communities under the SMA programme. Activities include the deployment of nearshore fish aggregating devices, community moorings for ecotourism and the development of aquaculture species for local and export markets (e.g. giant clams, seaweed, sea cucumber). He noted that the Ministry of Fisheries is also working on sea cucumber farming for distribution to SMAs.



The following questions were discussed in the plenary session with all participants²:

Question 1: What sustainable livelihood activities (land or marine-based) could benefit Special Management Areas?

- Floorshows, aquaculture, women's weaving activities (including allocated space), livestock farming (e.g. pigs, chickens), offshore fishing, ecotourism, re-training of traditional fishing practices and kava planting.

Question 2: What tourism-related activities would benefit Special Management Areas?

- Ecotourism activities such as tourist visits to SMAs and FHRs (e.g. snorkeling in the 'Atata SMA); whale watching; cleaning the environment and promoting sustainable, traditional fishing practices and knowledge (e.g. fishing for sharks, or *no'o 'anga*); and skipjack (*hi 'atu*). It also is important to determine or better understand how these activities benefit SMA communities

Question 3: What ideas are there for aquaculture?

- Preferred species for farming are sea cucumber and seaweed (*limu tanga'u*).

PANEL SESSION 4: RELEVANT GOVERNMENT MINISTRIES AND THEIR ROLES IN THE SMA PROGRAMME

Panel: Ms Malia Alava, Climate Change, Ministry of Meteorology, Energy, Information, Disaster Risk Management, Environment, Climate Change and Communication (MEIDECCC); Ms Sulieti Hufanga, Department of Environment (MEIDECCC); Ms Katakia Lea'aetooa, Ministry of Internal Affairs; Mr 'Aleki Pongi, Ministry of Land, Survey and Natural Resources; Mrs Lu'isa Fihaki, Tourism; Mr Paha Fuavao, Marine and Ports Division.

Facilitator: Ms Mele Tauati, Food and Agriculture Organization (FAO).

This session required representatives of Tonga's government ministries to explain their roles and the mandates relating to the SMA programme, and how they can further support it. Responses are summarized as follows:

- **Climate Change (MEIDECCC):** It was emphasized that it is essential to comprehend and address the impacts of climate change, including sea rise, increasing rainfall that affects marine resources, rising ocean temperatures that cause coral bleaching - all of which kill fish and other marine species. MEIDECCC promotes low-cost or "soft" climate change adaptation measures such as the planting of trees in coastal areas and ensuring that the environment is clean.
- **Department of Environment (MEIDECCC):** Works closely with the MoF. Programmes include SMA work relating, for example, to the Marine Spatial Planning programme. The Department also provides technical assistance and resources to the MoF to implement and monitor SMA activities (e.g. provision of a dive team). The Strengthening Protected Area Management (SPAM) project, supported by the Italian Ministry for Environment, Land and Sea, also aids marine resource surveys and the establishment of SMAs and marine protected areas. Knowledge and the data collected also are shared with the MoF (e.g. sea cucumber surveys and creating ways to improve collaboration).
- **Ministry of Tourism:** Aiming for integrated ocean management, the Ministry is developing a marine spatial plan with community consultations, supported

² Given the large number of participants, they were divided into four main groups to respond to the questions

by its partners. Whale watching is an important tourist attraction managed by the Ministry whereby some SMA communities have participated. Given that there have been some issues between the whale watching operators and SMA communities, it is all the more important to improve communication between both. In addition, the Ministry aims to reduce the risk of detrimental effects on whales as a result of business-related activities, and is encouraging sustainable, marine-based ecotourism activities within SMAs.

- **Ministry of Internal Affairs:** Works with district and town officers and encourages them to participate in SMA programme meetings. Since there are many communities that do not understand SMA regulations, it is essential to conduct training workshops and consultations to improve knowledge about and understanding of SMA directives.
- **Ministry of Land, Survey and Natural Resources:** The Ministry oversees laws that govern land, including coastal or beach areas, whereby land from 50 feet (15.24 metres) above sea level belongs to the Crown. The Ministry manages sand mining activities and establishes National Parks. National Parks can be another option for SMA communities to help manage and reduce sand mining activities in their areas.
- **Marine and Ports Division:** The Division's role is only to manage moorings within harbour boundaries. Thus, it does not have a mandate to assist communities on issues relating to the use and deployment of boat moorings in their SMAs/FHRs.

The main plenary discussion is summarized below:

- Compared to whale hunting, the activity of whale watching by tourists in Tonga has increased the income for many. Regulations are in place to manage whale watching activities.

MONITORING, CONTROL, SURVEILLANCE AND ENFORCEMENT OF SPECIAL MANAGEMENT AREAS

Presenter: Mr Poasi Ngaluafe, MoF

Mr Ngaluafe gave a presentation on Tonga's compliance and enforcement activities relating to SMAs. He stated that such activities are based on CCMPs and relevant fishery regulations, and are coordinated between the CCMCs and fishery officers. The ministry has four focus areas relating to compliance and enforcement that align to the SMA programme, as follows:

- Establishment of patrol officer(s) in coastal areas to ensure adherence to fishing regulations, including the prevention of certain fishing methods and compliance with closed-fishing seasons in relation to specific species, such as mullet.
- Collaboration with the Tongan Police Department and Maritime Force relating to the monitoring and surveillance of ocean waters, ensuring that fishing boats are licensed and adhere to fishing regulations.
- Satellite monitoring of commercial fishing vessels with an Automatic Identification System.
- Collaboration with Ports Authority Tonga to ensure that fishing boats observe and adhere to regulations

Mr Ngaluafe added that the MoF's other roles include conducting workshops and trainings for SMA communities on how to follow their CCMPs and enforcing fishery regulations. Regulations include the prohibition of fishing in community FHRs.

In order to strengthen the enforcement of SMA regulations, a court case relating to illegal fishing must be supported by strong evidence. Mr Ngaluafe provided guidance as follows:

- The CCMC is responsible for developing a patrol plan for each SMA. Two or more patrols are necessary to protect an SMA and to liaise with the witness/witnesses of any incident.
- Consideration should be given to resolve a case between the relevant parties, if possible, prior to reporting the issue to the MoF. The Police Department is helpful in providing advice in the first instance.
- Communities should ensure that they have the necessary materials and resources to collect evidence to present in court.
- Communities should ensure that illegal fishing incidents are recorded accurately. A standard form is available to record the activity, including the name of the illegal fisher(s), boat name, date and time, and what was caught.
- It is essential that the community works together, as well as with the CCMC and other partners.

Further details were provided regarding the materials needed to adequately enforce regulations and to gather evidence:

- It is necessary to have in hand a camera, GPS, phone and the use of a patrol boat. In the event that the boundary markers (buoys) have been cut off, the GPS is able to provide the coordinates of the location where the incident took place. It also will confirm whether or not the incident was within or outside of the boundary.
- A letter of evidence should be prepared, including complete details and a concise description of the equipment used to gather the evidence; this should be submitted to the court.

Mr Ngaluafe concluded that fishing regulations are critical to ensure the protection of marine species. Fishing regulations should be clear so that they can be easily understood by the general public.

The key plenary discussion was the following:

- A request to the MoF was made by Ha'ano to carry out trainings on octopus fishing (maka feke) or snapper fishing. The MoF responded in favour.

PANEL SESSION 5: DIALOGUE WITH SPECIAL MANAGEMENT AREA PARTNERS AND DONORS

Panel: Mr Brian Fusimalohi, SPAM Project (MEIDECCC); Mrs 'Ofeina Filimoehala, Tonga Health; Mr Ikenasio Taulangovaka, MORDI; Ms Lisa Fanua, VEPA; Ms Vanessa Lolohea, Civil Society Forum of Tonga (CSFT).

Facilitator: Dr Siola'a Malimali, MoF.

Participants to this session represented partners and donors that have contributed to the SMA programme in terms of its implementation and the establishment of SMAs. They also support alternative livelihood activities and provide the resources for community management.

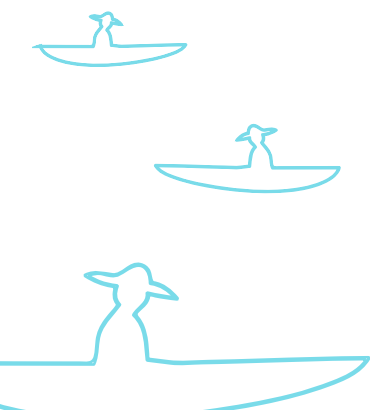
Question 1: What activities are funded through your programmes that support Special Management Areas?

- Supporting the development and implementation of SMAs through financial and human resource contributions.

- Awareness raising within communities on a variety of topics including community management, environmental and marine resources, healthy foods and livelihood programmes, and ocean management programmes (e.g. Marine Spatial Planning for SMAs).
- Support for alternative livelihood programs including agriculture, eco-tourism and raising of livestock (i.e. chickens).
- Environmental programmes that include waste clean-ups and reduce coastal erosion.
- School programmes on environmental topics.

Question 2: What are the difficulties that occur in supporting the Special Management Area programme?

- Funding is spent between activities within the communities and engaging fisheries staff in the SMA development process.
- Participant delays in arrival to and unattendance at meetings can be frustrating; thus, there is a need to improve communication in the organization of meetings.
- Project funding often becomes short between the first and five years of a programme's lifecycle; in this case, the current timeframe and process to establish the SMAs do not always coincide with the funding timeframe.
- Monitoring and evaluation are essential activities; it would be useful to share the outcomes with partners.
- There is a need to improve communication and the exchange of knowledge at all levels to strengthen the relationship between government and support partners.



Day Two – 1 May 2019

FIELD TRIP TO THE ‘OVAKA SPECIAL MANAGEMENT AREA

Participants travelled by boat to visit the SMA of ‘Ovaka Island, Vava’u which, since 2008, represents the longest established SMA in Tonga. The District Officer for the Vava’u outer islands, Mr ‘Ulaiasi Vaisima, and Town Officer of ‘Ovaka, Mrs Pasimata Vaisima, hosted the event in conjunction with the ‘Ovaka community.

During her opening speech, Mrs Vaisima gave a brief history on the development of the ‘Ovaka SMA, which resulted from a vision of ‘Ovaka’s Chief Tu’ihalama that “oceans would be the means of survival for future generations”. The ‘Ovaka community was invited in 2008 by the MoF to participate in the SMA programme. Since then, and with the support of numerous partners, the community has worked tirelessly to manage its SMA and restore marine resources.

The ‘Ovaka community has benefitted since 2008 from a wide range of donors and NGO support. The resources and training provided have strengthened community management, particularly in terms of providing alternative livelihoods and improving infrastructure.

FIGURE 1
The Honourable Minister of Fisheries and some workshop participants
pose in front of the ‘Ovaka Fish Habitat Reserve (FHR) area.



©VEPA

Day Three – 2 May 2019

TECHNICAL SUPPORT FROM THE FOOD AND AGRICULTURE ORGANIZATION TO THE SMA PROGRAMME

Presenter: Ms Mele Tauati, FAO

Ms Tauati provided an overview of FAO’s technical support to the SMA programme over recent years. This included a review of the SMA programme, implemented from 2016 to 2017 and key recommendations that currently are being taken into account.

The SMA review outcomes were based on in-country stakeholder consultations and included visits to SMAs in Vava’u, Ha’apai and Tongatapu in 2016 to determine any major programme issues and to recommend ways to resolve them. Key problems identified were whether or not the programme was more about improving coastal resource management or more about village development, as well as the significant workload of limited fisheries staff; uncertainty about the effectiveness of SMA monitoring; the high cost of establishing SMAs; and the fact that non-coastal communities have less or no access to coastal fishing areas (a concern of Tongatapu and Vava’u). Recommendations as a result of the review included streamlining establishment and monitoring processes of SMAs so that they become more cost effective; capacity building of MoF staff involved with SMAs; and determining the impacts of SMAs on non-coastal communities.

Ms Tauati concluded by sharing the expected outputs of an ongoing FAO project that provides technical support to the SMA programme. These are:

- development of an SMA manual for MoF based on reviewed establishment and monitoring processes;
- provision of trainings to complement the manual;
- development of an integrated data and information system;
- review of the socio-economic impacts of the programme on non-coastal communities; and
- enhancement of awareness programmes and materials.

LEGAL PROCEEDINGS IN RELATION TO SPECIAL MANAGEMENT AREAS

Facilitators: Salesi Mafi, Hon Chief Magistrate; Ms Salote Koloamatangi, Legal Officer, MoF.

The aim of this session was to explain the legislations that relate to the rights and freedom of Tongans in the context of fishing. It also included the requirements for developing and enforcing the legislations that govern SMAs.

The Hon Chief Magistrate, Salesi Mafi, opened the session with an overview of the Constitution of Tonga which defines the rights of Tongans, the three branches of government and the overarching legislation for the kingdom. Ms Salote Koloamatangi

spoke about the legislations that govern or relate to SMAs, in particular to that managed by communities (Table 2).

TABLE 2
Summary of legislations that govern or relate to the Special Management Area programme.

Legislation	Overview
Act of Constitution	The Constitution is the primary Act for the Kingdom of Tonga; it is the Act that describes the roles of the Monarchy, Judiciary, Legislative Assembly and Privy Council and defines how Parliament should operate. The Constitution defines the basic human rights of all Tongan people.
Fisheries Management Act (2002)	Defines how Special Management Areas (SMA) can be declared and allocated to a designated coastal community for the purpose of coastal community management, and defines the rights and responsibilities of that community to the SMA. It also includes a provision for regulations to be made in respect of each SMA established (see below).
Fisheries (Coastal Communities) Regulations (2009)	<p>These regulations, established under the Fisheries Management Act 2002, have provisions for coastal communities and their allocated SMAs. It defines:</p> <ul style="list-style-type: none"> the boundary of an SMA (up to 2,500 metres' distance from the high tide mark out to sea or a depth of up to 50 metres). how the CCMC is be established, its roles and functions (Note: a 2016 Amendment does not require the Town Officer to be the Chairperson). It also defines offences against a CCMC member; responsibility of the Ministry of Fisheries to support the SMA and its CCMC; fishing conditions in the SMA and how to define authorized persons to fish in the SMA (through Registers), including a provision to establish a no-fishing or no-take area (FHR) within the SMA. <p>It also includes in its Schedule maps and boundary details of all SMAs established and gazetted.</p>

Main plenary discussions are summarized as follows::

- The Constitution of Tonga is supreme law and supercedes all other legislations. Any new regulations developed must not contradict the Constitution and will be assessed as such prior to being published in the government gazette.
- As the Constitution defines the rights of the people of Tonga, there is a concern that SMAs may restrict or limit the rights of certain people to fish in the SMA area (considered a self-fish law). It was emphasized, however, that SMA regulations will benefit Tonga's future resources, in particular by combatting the threats of and damages from overfishing. It is the responsibility of SMA communities to ensure that they effectively carry out their SMA commitment not to fish unwisely in non-SMA areas.
- For a management plan amendment to be legally binding, any change has to be assessed by
- MoF and published in the government gazette.
- Current regulations prohibit the act of fishing in an SMA by non-registered fishers; however, boat anchoring is permitted. It was suggested at the workshop for a new law to ban the anchoring of boats due to damages made within SMA areas. It was stated that SMA communities must not prohibit boats from crossing the SMA area.
- Awareness of legislations and their clarification thereof should be improved, including legislations not relating to fisheries. SMA communities are encouraged to report any issue to their respective member of Parliament so that it can be raised in Parliament;



- Due to the long delays in publishing new regulations for each new SMA, Crown Law now has applied only one regulation to represent the general conditions and rules relating to all SMAs. Provision(s) can be added based on a specific fishing issue in any given SMA, according to its CCMP. For example, the 'Eueiki SMA is the only SMA with a minimum size limit for octopus (< 60 centimetres in length), and Ovaka SMA has established an FHR for giant clams and lobster.
- Parliament should address the issues of legislation regarding tourism activities within SMAs, especially for boats within these areas. It was suggested to introduce a law that requires an entry fee for visitors, paid to the CCMCs, to support tourism-related activities.
- SMA regulations should be made transparent and explained clearly to the general public.
- Sufficient evidence and information must be gathered to ensure that cases can be heard in court.
- Police officers and SMA communities should improve collaboration, and police officers should assist communities in enforcing the law and ensuring compliance.
- Non-registered boats are not permitted to cross FHRs; however should it happen, it is also essential to check incase it is an emergency situation.

COMMUNITY SCENARIOS OF LEGAL PROCEEDINGS WITH REGARD TO SPECIAL MANAGEMENT AREAS

During this session, the Chief Magistrate, Hon Salesi Mafi, related various real-life scenarios relating to illegal fishing in SMAs. Key lessons learned were shared in an effort to support SMA communities in improving their understanding of enforcement and compliance activities - especially with regard to the preparation of a court case.

The Chief Magistrate and some of the workshop participants performed role plays for four different real-life scenarios. A few of the scenarios that were discussed are summarized below.

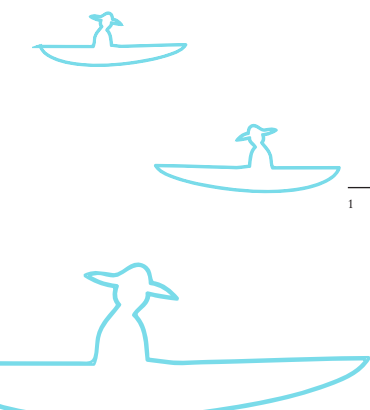
Scenario 1: A non-registered fisher was crossing the Special Management Area on a registered boat when a member of the committee stopped the boat and found that there were fish within

- Evidence provided: A description of the offence.
- Prosecution: The boat was registered (authorized to fish) and not the fisher (unauthorized to fish). There was insufficient evidence attesting to the fact that the fish were caught within the SMA boundary, given that there were no eye witnesses, photos or videos of the alleged activity. In addition, the prosecution letter was weak as a result of the lack of evidence. The case, therefore, had no chance of winning in court.

Scenario 3: Non-registered boats and fishers were diving for sea cucumber in the 'Utungake Special Management Area

- Evidence: Two patrol officers¹ reported that they had discovered a fisherman illegally diving for sea cucumber within the 'Utungake FHR. The matter also was reported to the Neiafu police station. One of the FHR patrol officers described that he and his colleague saw the fisher diving for sea cucumber and that his boat was filled with sea cucumbers. He and his colleague seized the fisher and his boat and took the fisher to the Town Officer. The second patrol officer, however, had

¹ The patrol officers are members of the CCMC and conduct monitoring and enforcement activities according to the SMA CCMP.



provided a contradictory version of the event. An MoF officer provided the exact location of the crime and also explained that the sea cucumbers have a favourable market price. While the statements of other witnesses also were submitted to the Magistrate, there is yet further evidence to be submitted including the 'Utungake CCMP, the confiscated sea cucumber and any relevant photos.

Scenario 4: Non-registered fisher ran away when the committee approached

- The fisher was seen by the Town Officer and his wife, and it was reported to the police station. The community requested that the case not proceed to court.

Some of the main challenges and lessons learned from the scenarios are as follows:

- Eye witness statements may vary.
- Clarification is essential of the role of those patrolling the SMA and what actions they are permitted by law.
- Unless there is sufficient evidence to prove an offence, the case will lose in court or it even may be difficult to have the case heard in court. A concrete chain of evidence (including videos and photos) is essential to confirm any illegal activity.

SUMMARY OF OUTCOMES AND RECOMMENDATIONS

Ms Eileen Fonua of MoF presented the following summary of outcomes and recommendations from the workshop. The MoF will oversee the overall implementation of these.

Improvement of community management

- Increase the knowledge and awareness of communities in Tonga about the SMA programme.
- Host meetings on an annual basis regarding the SMA programme.
- Clarify regulations and CCMPs to strengthen community management.
- Improve engagement and collaboration between SMAs and neighbouring communities to ensure that CCMPs are followed.
- Town Officers to work closely with their communities in following CCMPs.
- CCMCs to work closely with the MoF in following CCMPs.
- Encourage SMA communities to conduct low-budget activities to benefit their SMAs and marine environment (e.g. planting of coastal trees and waste clean-up programmes).
- There is still some feeling that SMA regulations may restrict the freedom and rights of people (i.e. to fish or to access fishing areas) under the Constitution of Tonga.

Strengthening of enforcement and compliance

- Support and encourage ways in which to help reduce conflict between SMA and neighbouring communities.
- Conduct training for SMA communities and provide necessary resources for enforcement (e.g. patrol boats and relevant equipment).
- Engage police in SMA regulation trainings and enforcement programmes.
- Improve the capacity of SMA communities to collect evidence on illegal activities that is required to support police and judiciary processes.
- Identify requirements to enable the review and adaptation of SMA regulations based on resources and application.
- Enhance the GPS coordinates for SMA and FHR boundaries (longitude and latitude) on maps.
- Determine and address the impacts on SMA areas, particularly on neighbouring communities and their livelihoods.

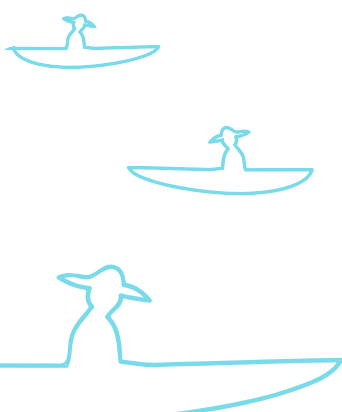
Support for alternative livelihoods to generate income and reduce fishing pressure on reefs (for the MoF to lead and/or facilitate)

- Develop alternative activities that will generate income to support communities with an SMA, such as ecotourism activities (e.g. whale watching, snorkeling in no-take FHRs).
- Explore the rules for permitting non-extractive tourism activities in FHRs and charge an entry fee.
- Promote agriculture (e.g. kava and pandanus planting) and livestock activities.
- Increase aquaculture programmes, particularly for sea cucumber, seaweed (*limu tanga'u*) and giant clams.
- Develop and engage in alternative fishing practices for deep-water fishing.
- Promote traditional fishing practices that are sustainable, such as fishing by noose (*no'o 'anga*) and octopus lure (*maka feke*).

Further strengthening of partnerships by stakeholders

- Improve collaborative partnerships between line government ministries and departments: Fisheries; Environment and Climate Change; Crown Law; Police; Tourism; Lands, Survey and Natural Resources; and Internal Affairs.
- Clarify the roles of government ministries and their respective projects to prevent duplication, overlap, confusion or conflict.
- Seek funding that can be provided directly to communities to support their SMA programmes.
- Recognize that partnerships between communities, government, donors, local civil societies and non-government organisations are significantly important for the success of SMAs. Increase and improve communication between all parties so as to benefit community management.

The Hon Minister for Fisheries delivered his closing remarks and highlighted the success of the workshop, which encouraged active discussions among SMA communities and other key stakeholders on the challenges and potential solutions to strengthen the SMA programme. He thanked all participants and organizers for their countless efforts over the three days of the workshop. A lot of work remains to be done, he added, with respect to the lessons learned and the extensive follow-up recommendations to ensure the improvement and success of the SMA programme and its contribution to coastal fisheries management, food security and the livelihoods of the people of Tonga.



Appendix 1: Workshop Agenda

DAY 1: Tuesday, 30 April 2019		
Opening of Workshop		
08.30	Opening prayer	Rev Pohiva Loto'ahea (Faifekau Pule SUTT, Vava'u)
	Welcome remarks	Dr Siola'a Malimali, Ministry of Fisheries (MoF)
	Opening remarks	Hon Minister, MoF
	Closing remarks	Samiu Vaipulu, MP for Vava'u 15
	Closing prayer	Rev Pohiva Loto'ahea (Faifekau Pule SUTT, Vava'u)
	Group photo	All
10.00	MORNING TEA	
10.30 – 11.00	Setting the scene: Overview of the Special Management Area (SMA) programme. Status of SMAs and fisheries management issue.	Presenter: Siola'a Malimali, MoF
Questions & Answers		
11.00 – 11.30	Panel Session 1: Community benefits and challenges in relation to the SMA programme	Panel: Manase Tu'alau, Town Officer of 'O'ua (Ha'apai); Peni Lalakai, Town Officer of Ha'afeva (Ha'apai); Sikula Fonua, SMA Coastal Community Management Committee (CCMC) and Chairperson of 'Atata (Tongatapu); and Ma'afu Mahe, Town Officer of Taunga (Vava'u) Facilitator: Eileen Fonua, MoF
Questions & Answers		
11.30 – 12.00	Panel Session 2: Leadership, decision-makers and awareness	Panel: Honourable Minister for Fisheries, Semisi Fakahau; Members of Parliament, Siaosi Sovaleni (Tongatapu Constituency 3), Samiu Vaipulu (Vava'u Constituency 15) and Vatau Hui (Niuas) Facilitator: Dr Vailala Matoto
Questions & Answers		
12.00 – 12.30	Panel Session 3: Strengthening the SMA process	Panel: Napa'a Halatanu, Town Officer of Hunga; Koli Tala'aho Fituafe, Town Officer of Matuku; Mina'ati Fifita, Town Officer of Koloa; Viliami Latu, Town Officer of 'Utulei; Tevita Tuiaki, Town Officer of Holonga; and Alaiva'a Moimoi, Town Officer of 'Ofu Facilitator: Salote Koloamatangi, MoF
1.00 -2.00	LUNCH	
Questions & Answers		
2.00 – 2.30	Regional experience on community-based fisheries management: The case of Fiji	Mr Watisoni Lalavanua, Community Based Fisheries Management Officer, SPC; and Mr Kiniviliame Ravonoloa, Field Engagement Officer and Community Representative of the Fiji Locally Managed Marine Area Network
Questions & Answers		
2.30 – 3.30	Sustainable livelihoods and aquaculture	Presenter: Siola'a Malimali, MoF
	Break out groups	Discussion on livelihoods and aquaculture
3.30 – 4.00	AFTERNOON TEA	



4.00 – 4.30	Panel Session 4: Relevant government ministries and their roles in the SMA programme	<p>Panel: Malia Alava, Climate Change, Ministry of Meteorology, Energy, Information, Disaster Risk Management, Environment, Climate Change and Communication (MEIDECCC); Sulieti Hufanga, Department of Environment (MEIDECCC); Katakai Lea'aetooa, Ministry of Internal Affairs; 'Aleki Pongi, Ministry of Land, Survey and Natural Resources; Lu'isa Fihaki, Tourism; Paha Fuavao, Marine and Ports Division</p> <p>Facilitator: Mele Tauati, Food and Agriculture Organization (FAO)</p>
Questions & Answers		
4.30 – 5.00	Monitoring, control, surveillance and enforcement of SMAs	<p>Presenter: Poasi Ngaluiafe, MoF Police</p>
Questions & Answers		
5.00 – 5.30	Panel Session 5: Dialogue with SMA partners and donors	<p>Panel: Brian Fusimalohi, Strengthening Protected Area Management project (Ministry of Meteorology, Energy, Information, Disaster Risk Management, Environment, Climate Change and Communication); 'Ofeina Filimoehala, Tonga Health; Ikenasio Taulangovaka, Mainstreaming of Rural Development Innovation; Lisa Fanua, Vava'u Environmental Protection Association; Vanessa Lolohea, Tonga Civil Society</p> <p>Facilitator: Dr Siola'a Malimali, MoF</p>
7.00 – 9.00	Welcome Function: 'Eneio Botanical Gardens	
DAY 2: Wednesday, 1 May 2019		
Field trip to 'Ovaka Special Management Area		
DAY 3: Thursday, 2 May 2019		
8.30 – 9.00	Technical support from the Food and Agriculture Organization to the SMA programme	Presenter: Mele Tauati, FAO
9.00 – 10.00	Legal proceedings in relation to SMAs	Facilitators: Salesi Mafi, Hon Chief Magistrate; Salote Koloamatangi, Legal Officer, MoF
10.00	MORNING TEA	
10.30 – 1.00	Continuation of Legal proceedings	
1.00 – 2.00	LUNCH	
2.00 – 3.00	Community based scenarios with regard to SMAs	Presenter: Salesi Mafi, Chief Magistrate
3.00 – 3.30	AFTERNOON TEA	
3.30 – 4.00	Summary of workshop outcomes and recommendations	Presenter: Eileen Fonua, MoF
4.00 – 4.30	Closing remarks	Hon Minister, MoF
	Closing prayer	Rev Soiletti Kalavai
Closing Function: Ministry of Fisheries, Vava'u Office		



Appendix 2: Opening remarks by the Honourable Minister for Fisheries, Semisi Fakahau

Shallow water fishing is one of the most important resources for the people of Tonga, especially for small scale fishers in the communities, as a source of income, source of food and to strengthen the community's development. The problems that we are facing nowadays are decreasing on the standards of shallow water fishing. I believe all fishermen's witnesses this. Fishing is difficult, fishing areas is further out, and it may take a long time, decrease in the catch and the size of the fish. This is a problem that the government mostly taking care of, as it is related to livelihood and food source of the people of the government. So, it's a must for the government to find solution for this problem. Special Management Area (SMA) are a pathway to manage shallow water fisheries within the ocean of Tonga which has been approved by the government and legalised in 2002. It is the same pathway that the Pacific island countries agreed to use.

This programme gives the communities and the fishermen the legal authority to manage fisheries within their Special Management Areas. There's a belief we can do this programme better and can be able to meet and achieve fishermen goals, community and the government. We had the same belief in this meeting, in related to bible messages, fish and marine species, is our responsibility to take care and manage them well for sustainable benefits that we get from it.

In this conference it is vital for us to answer this question: "Why is the SMA programme so special?" Even though we had too many programme for each community, and the need to cooperatively work to protect our ocean, this is the only programme that is specifically designed for small scale fishers and the people in which their livelihood relies on the ocean.

So, within these 3 days of workshop, we can learn and know more about Special Management Areas and it's relation with each related body and working group. So, I ask you all to think and to speak of ways to improve this programme and to ensure that we get and achieve our communities aims that have joined this programme. Not only that, let's look at ways which strengthen the communities in managing their Special Management Areas. I believe this is a great opportunity to share knowledge and skills that we can help this programme and its working goals, and we'll be able to upgrade the working energy and the importance of this programme in Tonga.

I wish to give thanks to all partners who helps us in fulfilling this conference task, to FAO, SPC, MORDI Tonga, Italian Ministry of Environment, WAITT Foundation and VEPA. Special thanks to Non-Government Organizations such as Tonga Civil Society and Tonga Health, government ministries for working corporately with us in this Special Management Area programme.

I thank you for this opportunity and I wish you all a very successful meeting. Therefore, I declare this meeting to be officially opened.

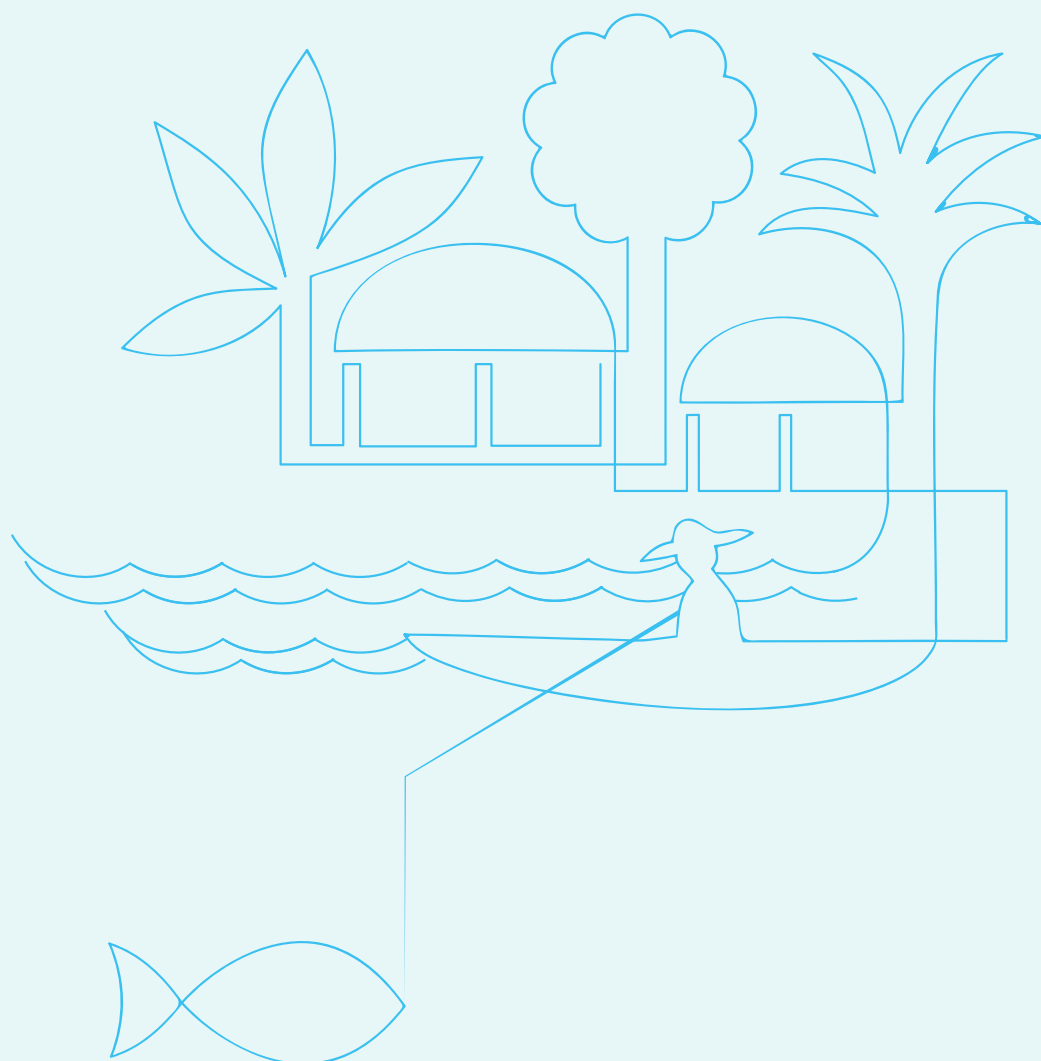
Thank you very much.
Tu'a 'Ofa 'Eiki Atu.

Lipooti ki he

FAKATAHA FAKAFONUA KI HE FEITU'U PULE'I

MAKEHE – NGAAHI LESONI KUO TAU AKO

Vava'u, Tonga, 30 'Epeleli – 2 Me 2019



Kanotohi Mo E Puipuitu'a

'I he katoa 'o e 'otu Tonga, kuo fu'u lahi 'a hono ngaue'aki (pe toutai'i) 'a e ngaahi me'a mo'ui 'i he matafanga ki he ma'u me'atokoni faka'aho mo e ngaahi fiema'u fakapa'anga foki. Talu mei he kuohili, kuo toe tokolahi ange e kakai 'o e fonua pea fakaonopooniange 'a e ngaahi vaka mo e naunau toutai 'oku ngaue'aki, 'o iku faingata'a'ia ai e ngaahi me'a mo'ui 'o tahi koe'uhi ko e toutai ta'efakapotopoto. 'Oku tu'u lavea ngofua foki 'a e ngaahi hakau 'i he matafanga koe'uhi ko 'enau ofi ki uta pea mo e ngaahi feitu'u 'oku nofo'i tokolahi taha. 'Ikai ngata ai, ko e ngaahi ngaue 'oku 'ikai fakapotopoto, hange ko e ngaue'aki e 'aukava (ko ha 'akau 'oku ngaue'aki ke fakakonahi'aki e ika), tupulaki e ngaahi ngaue fakalalakaka ki he takimamata 'oku kovi ki he 'ataakai, mo e ngaahi uesia mei he feliliuaki 'a e 'ea, 'oku nau toe fakafaingata'ia'i e ngaahi nofo'anga mo e ngaahi me'a mo'ui 'i tahi. 'Oku faingataa'ia ai 'a e ngaahi kolo mo 'enau ma'u'anga mo'ui mo hono pule'i 'o e toutai ke fakapotopoto. 'I he senituli 20, na'e 'ataa pe ke toutai'i 'e he kakai Tonga kotoa pe 'a e ngaahi potu tahi 'o Tonga, pea kuo 'asili ai e holo ai e ika mo e ngaahi nofo'anga kehekehe 'o e ika 'i tahi, ki ha tu'unga 'oku 'ikai tu'uloa pea uesia foki mo e ma'u'anga mo'ui 'a e kakai.

'I he 2002, na'e fakamafai'i ai e lao fo'ou ki he Pule'i 'o e Toutai 'a e ngaahi kolo 'i Tonga ni ke nau pule'i e toutai 'i honau matafanga, 'o fakafou 'i he polokalama Feitu'u Pule'i Makehe (SMA). Ko e founa pule'i fo'ou ko eni 'o e toutai, oku ne tokoni ki he ngaahi kolo matatahi ke nau malu'i, fakatupulaki mo ngaue'aki fakapotopoto e ngaahi koloa toutai 'i honau matafanga. Ko e polokalama Feitu'u Pule'i Makehe 'oku ne toe pou pou foki ki hono fokotu'u ha ngaahi ma'u'anga mou'i kehe pea mo e matu'uaki e ngaahi uesia mei he feliliuaki 'a e 'ea. 'I he polokalama ni, 'oku ngaue vaofi ai e ngaahi kolo mo e Potungau Toutai pea pehe ki he ngaahi kupu fengaue'aki kehe, ke fa'u ha ngaahi palani toutai ki he Feitu'u Pule'i Makehe (Palani Pule ki he Kolo Matatahi (CCMP)). Na'e fokotu'u foki 'i he 2009 'a e Ngaahi Tu'utu'uni ki he Toutai (Kolo Matatahi), 'a ia 'oku 'i ai e ngaahi tu'utu'uni ki he founa hono fokotu'u ha Feitu'u Pule'i Makehe hange ko hono fokotu'u e ngata'anga 'o e Feitu'u Pule'i Makehe pea mo e Feitu'u Malu'i 'a e Nofo'anga 'o e Ika ('Elia Tapu).

Talu mei he 2002, ko e SMA fakakatoa eni 'e 40 kuo fokotu'u 'i 'Eua, Tongatapu, Ha'apai pea mo Vava'u. 'Oku kei toe lahi pe foki 'a e 'u tohi kole mei he ngaahi kolo 'a ia 'oku kei fakatatali.

TEPILE 1

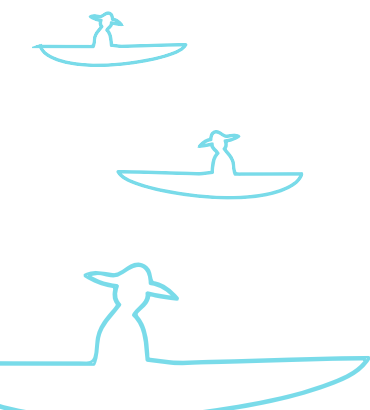
Lisi 'o e ngaahi Feitu'u Pule'i Makehe 'i Tonga mo e ta'u na'e fokotu'u ai (lisi a'u mai ki he 'aho 30 'o Me 2019).

Fika	Vahe	Kolo/Motu	Ta'u na'e fokotu'u ai	Fika	Vahe	Kolo/Motu	Ta'u na'e fokotu'u ai
1	Ha'apai	'O'ua	2006	21	Vava'u	Ofu	2017
2	Ha'apai	Ha'afeva	2007	22	Vava'u	Koloa	2017
3	Vava'u	Ovaka	2008	23	Ha'apai	Mango	2017
4	Ha'apai	Felemea	2008	24	Ha'apai	Fonoifua	2017
5	Tongatapu	Atata	2008	25	Ha'apai	Matuku	2017
6	Ha'apai	Nomuka	2011	26	Tongatapu	Pangaimotu	2017

7	Ha'apai	Tonumea mo Kelelesia	2011	27	Tongatapu	Ha'atafu	2017
8	Vava'u	Taunga	2013	28	Tongatapu	Holonga	2017
9	Tongatapu	Fafa	2014	29	Vava'u	Holeva	2018
10	Ha'apai	Kotu	2015	30	Vava'u	Kapa	2018
11	Tongatapu	Kolonga	2015	31	Ha'apai	Lofanga	2018
12	Tongatapu	Nukuleka	2016	32	Ha'apai	Uiha	2018
13	Tongatapu	Lapaha	2016	33	Ha'apai	Mo'unga'one	2018
14	Vava'u	Utulei	2017	34	Ha'apai	Muitoa	2018
15	Vava'u	'Utungake	2017	35	Ha'apai	Ha'ano	2018
16	Vava'u	Talihau	2017	36	Ha'apai	Pukotala	2018
17	Vava'u	Falevai	2017	37	Ha'apai	Fakakai	2018
18	Vava'u	'Eueiki	2017	38	Ha'apai	Faleloa	2018
19	Vava'u	Lape	2017	39	'Eua	Houma	2018
20	Vava'u	Hunga	2017	40	'Eua	Tufuvai	2018

Ma'u mei he: Potungaue Toutai, Tonga.

'I he 2015, na'e fakahoko ai e fuofua Fakataha Fakafonua ki he Feitu'u Pule'i Makehe - Ngaahi Lesoni Kuo Tau Ako, 'i Ha'apai, 'a ia na'e taumu'a ia ke "toe lelei ange 'a e 'ilo mo hono tokangaekina 'e he ngaahi kolo 'a e polokalama Feitu'u Pule'i Makehe mo toe fakalelei'i 'a e ngaahi fatongia e ngaahi kolo 'i hono pule'i honau Feitu'u Pule'i Makehe". Koe'uhi ko e tupu ma'olunga e fiema'u e ngaahi kolo he 'otu Tonga ki he Feitu'u Pule'i Makehe, 'a ia kuo laka hake he kolo 'e 40 kuo kau mai ki he polokalama kuo fakatokanga'i ai 'e he Potungaue Toutai 'a e lelei hono tauhi ke hokohoko atu ma'u pe 'a e ngaahi fakataha ni, 'aki hano toe fakahoko e Fakataha Fakafonua 'i he ta'u ni. Ko e Fakataha Fakafonua hono ua ko eni, na'e vakai ki he ngaahi tefito'i pole 'oku fehangahangai mo e polokalama Feitu'u Pule'i Makehe talu hono fokotu'u e fakakaukau 'i he ta'u 'e hongofulutupu kimu'a. 'Oku ne 'omi ha faingamlie mahu'inga ke fepotalanoa'aki ai 'a e ngaahi kolo Feitu'u Pule'i Makehe, Potungaue Toutai mo e ngaahi kautaha fengaue'aki, ke 'omi ha ngaahi solova'anga 'oku faingofua, mo fakapapau'i e ngaahi ngaue 'e hoko mai ke toe fakaivia e polokalama SMA mo 'ene tokoni ke tu'uloa e ma'u me'atokoni mo e ma'u'anga mo'ui 'a e kakai 'o Tonga.



'Aho 'Uluaki - 30 'Epeleli 2019

POLOKALAMA HUUFU 'O E FAKATAHA

Na'e huufi e fakataha ni 'e he 'Eiki Minisita Toutai, Semisi Fakahau 'aki 'ene faka'ilo e mahu'inga 'o e Toutai he matafanga ki he ma'u'anga mo'ui 'a e ngaahi kolo, malu e me'atokoni mo e tu'unga mo'ui lelei fakasosiale. Na'a ne toe fakaha neongo hono mahu'inga, ko e ngaahi me'a mo'ui 'i he ngaahi matafanga, kuo fehangahangai mo e ngaahi uesia mei he toutai ta'efakapotopoto pea mo hono ngaue'aki 'o e ngaahi naunau toutai 'oku toe leleiangae, 'a ia kuo ne 'ave e kau toutai ke nau mavahe atu ki he tahi loloto 'i hono kumi ha toutai'anga lelei. Na'a ne toe tanaki mai ko e Potungae Toutai 'oku si'i hono ivi fakangaue, pea ne fakamamafa'i mai ko e ola lelei 'a e fonga pule'i 'o e toutai 'i he kotoa 'o e tahi 'o Tonga, he'ikai lava ke a'usia 'e he Potungae tokotaha pe. Ko ha Founa Pule 'oku lelei, 'oku fiema'u ia ke fa'u ha ngaahi lao, mo e tu'utu'uni pe founa ngaue, ke ne fakangofua'i 'a hono pule'i 'e he ngaahi kolo 'a e toutai 'i honau matafanga, 'i he malumalu 'o e polokalama Feitu'u Pule'i Makehe, 'o fakatefito he ngaahi kolo. 'Oku 'oatu 'i he Appendix (Fakalahi) 2 'a e tatau 'o e Lea 'a e 'Eiki Minisita.

Ko e fakataha ni ne kau mai ki ai e kau ma'u fakataha na'e ofi 'i he toko 140, 'o kau ai e kau fakafongae mei he ngaahi kolo Feitu'u Pule'i Makehe 'i Tongatapu, Ha'apai, Vava'u mo 'Eua, kau memipa 'o e Fale Alea, kau Pule Fakavahe, ngaahi potungae felalave'i 'a e pule'anga, kau fakamaau, sosaieti sivile, ngaahi kautaha ta'e-fakapule'anga, kuataha fakalotofonua mo fakatu'apule'anga. Ko e 'asenita 'o e fakataha 'oku 'oatu 'i he Appendix (Fakalahi) 1, pea ko e lisi 'o e kau ma'u fakataha 'oku 'oatu 'i he Appendix (Fakalahi) 3.

FAKANOFONOFO: SIO FAKALUKUFUA KI HE POLOKALAMA FEITU'U PULE'I MAKEHE

Na'e 'omai 'e Dr Siola'a Malimali (Potungae Toutai) 'a e vakai fakalukufua ki he polokalama Feitu'u Pule'i Makehe mo hono fatongia mahu'inga 'i hono pule'i lelei 'a e ngaahi koloa 'a e toutai he matafanga, 'a ia kuo fakamafai'i 'i he malumalu 'o e Lao ki he Pule'i 'a e Toutai 2002. Ko e fuofua Feitu'u Pule'i Makehe na'e fokotu'u ia 'i he 2006 'i 'O'ua, Ha'apai pea 'i he 2018 ko e Feitu'u Pule'i Makehe eni 'e 40 kuo fokotu'u 'i he kotoa 'o Tongatapu, 'Eua, Ha'apai mo e 'otu motu 'o Vava'u. Na'a ne tanaki foki, hili ha ngaahi ta'u, ko e ngaahi kolo Feitu'u Pule'i Makehe 'oku hokohoko atu 'enau fehangahangai mo e ngaahi palopalema, hange ko e fepakipaki mo e ngaahi kolo kaunga'api mo e holo ko ia 'a e koloa 'o e 'oseni. Na'a ne toe fakapapau'i mai 'a e fa'ahinga 'e ua 'o e Feitu'u Pule'i Makehe: ko ia 'oku pule'i 'e he ngaahi kolo, mo ia 'oku pule'i fakataha 'e he kolo mo e Potungae Toutai 'i he ngaahi taumu'a ke fakatolonga e ngaahi me'a mo'ui (hange ko e Feitu'u Pule'i Makehe 'o e motu ko Fafa).

Na'e toe faka'ilonga'i foki 'e Dr Malimali ko hono 'omi fakataha ko ia e ngaahi kupu felalave'i 'i he polokalama Feitu'u Pule'i Makehe ki he fakataha ni, ko e ngaahi me'a eni kuo ikuna'i:

- Fakalahi hono tanaki e ngaahi 'ilo mo e tokangaekina 'o e Feitu'u Pule'i Makehe, pea mo 'ene fekau'aki mo e ngaahi founa pule'i 'o e 'oseni 'o Tonga;

- Tala e ngaahi lelei mo e ngaahi pole 'i he polokalama, talanoa'i e me'a kuo ngaue mo e me'a 'oku 'ikai ngaue 'i hono poupou'i 'o e Feitu'u Pule'i Makehe;
- Fakapapau'i e founga ke poupou lelei'aki e ngaahi kolo Feitu'u Pule'i Makehe ke fakalelei'i hono fakahoko mo fakamamafa'i 'o e lao, pehe ki hono founga pule'i;
- Faka'auliliki e ngaahi ngaue hoko ki he pule'anga mo e ngaahi kautaha fakapa'anga, sosaieti sivile mo e ngaahi kautaha 'oku 'ikai fakapule'anga, 'i hono poupou'i e ngaahi Feitu'u Pule'i Makehe;
- Langa mo fengau'e'aki vaofi e ngaahi kupu fekau'aki, ke poupou ki he polokalama Feitu'u Pule'i Makehe, 'i Tonga mo tu'apule'anga foki.

Ko e ngaahi talanga lalahi na'e hoko mai:

- 'I he fakamo'oni ki he ngaahi lelei 'i hono pule'i 'e he kolo 'a e toutai, ko e ni'ihi 'o e ngaahi kolo (Nukuleka mo Talihau) na'a nau vahevahe e ngaahi taukei lelei mei he kau mai ko ia ki he polokalama Feitu'u Pule'i Makehe, kae pehe ki he malava ke ta'ofi e founga toutai 'oku ta'efakapotopoto mo e tata 'one'one 'o fakafou 'i hono pule'i 'o e Feitu'u Pule'i Makehe. Na'e toe pehe foki ko e lahiange 'a e ngaahi koloa 'o tahi (mei he lelei hono pule'i), te ne 'omi ha ngaahi faingamalie lelei ma'ae takimamata ;
- 'I he tu'unga hono fakama'ala'ala e polokalama Feitu'u Pule'i Makehe mo fakapapau'i 'a e 'ilo ki he founga hono fokotu'u ha Feitu'u Pule'i Makehe fo'ou, 'oku 'i ai 'enau ngaahi fiema'u mahino 'a e Potungau'e Toutai ki he ngaahi kolo ke kau mai ki he polokalama SMA. Ko e taimi ko ia 'oku fa'u ai 'e he kolo 'enau palani pule ki he kolo matatahi (CCMP), kuo pau ke nau fakaha 'enau palani ki he ngaahi kolo kaunga'api ke talanoa'i mo felotoi. 'E toe fakaha foki 'i he letio mo e ngaahi nusipepa;
- Ko e fokotu'u pe poupou'i ha ngaahi ma'u'anga mo'ui kehe, na'e faka'ilonga'i ia ko ha konga mahu'inga 'o e polokalama SMA. Ko e tokolahi taha 'o e ngaahi kupu fekau'aki na'a nau poupou ki he ngaahi ngaue ni, hange ko hono to 'o e lo'akau ki he lalanga 'a ha'a fafine, ngoue mo e faama pea pehe ki he taumata'u 'i he tahi loloto.

TALANGA 1: NGAahi LELEI MO E NGAahi POLE 'I HE POLOKALAMA FEITU'U PULE'I MAKEHE

Penolo: Manase Tu'alau - 'Ofisa Kolo 'o 'O'ua (Ha'apai), Peni Lalakai - 'Ofisa Kolo 'o Ha'afeva (Ha'apai), Sikula Fonua - Sea Komiti Feitu'u Pule'i Makehe 'o Atata (Tongatapu), Ma'afu Mahe - 'Ofisa Kolo mo e Sea Komiti Feitu'u Pule'i Makehe 'o Taunga (Vava'u).

Tataki 'e: Eileen Fonua, Potungau'e Toutai

Ko e talanga ni 'oku fakataumu'a ia ke tanaki e ngaahi taukei mahu'inga 'i he ngaahi lelei mo e ngaahi pole mei he ngaahi kolo 'oku taukei lahitaha 'i he polokalama Feitu'u Pule'i Makehe. Ko e fepotalanoa'aki ni na'e kau ki ai e kau 'Ofisa Kolo 'a ia ko e ngaahi Sea ia 'enau Komiti Pule 'o e Kolo Matatahi (CCMCs), mei 'O'ua (ta'u 'e 13 'enau kau ki he polokalama), Ha'afeva (ta'u 'e 12), 'Atata (ta'u 'e 11) mo Taunga (ta'u 'e 6).

Fehu'i 1: Fakamatala ha lelei 'e taha pe ua mo e ngaahi pole kuo ke fetaulaki mo ia talu ho'omou kau ki he polokalama Feitu'u Pule'i Makehe?

- 'O'ua: Talu hono fokotu'u e Feitu'u Pule'i Makehe, kuo mau lava 'o pule'i e toutai ki he kakai pe 'o e kolo 'o 'ikai toe ngofua ha taha toutai mei tu'a';

¹ Oku fa'a 'uhinga eni ki he kakai 'oku 'ikai ha'u mei he kolo ko ia, ka 'oku fakaha hono 'uhinga 'i he' enau Palani Pule

- **Ha'afeva:** Ko e kau toutai mei Tongatapu 'oku nau ma'u e ngaahi taukei toutai 'oku toe leleiangē pea 'oku nau fa'a omai 'o toutai homau matafanga. Ko homau feitu'u toutai'anga 'oku si'isi'i pea ko 'emau kau mai ki he polokalama SMA, 'oku tokoni ia ke mau malu'i mo fakatolonga 'emau ngaahi koloa. Kuo mau lava foki 'o ta'ofi e kau toutai mei tu'a mei he toutai 'i homau Feitu'u Pule'i Makehe. 'Oku mahu'inga fau ki he kolo ke pule'i e toutai 'i homau matafanga;
- **'Atata:** 'I he ngaahi ta'u kimu'a atu, ko e kau toutai mei Tongatapu na'a nau omai ki homau motu 'o toutai uloa ai pea ko 'emau koloa 'i 'oseni na'e uesia. Talu mei he ta'u 2008 kuo mau lava ke holoki e ngaahi founa toutai 'oku ta'efakapotopoto pea kuo mau mamata e tupu tokolahi 'a e fanga ika. Ne mau toe tokoni ki hono fakalalakaka'i homau kolo 'o fakafou 'i he polokalama SMA, hange ko hono langa e 'aa kolo. Kuo lahi e ngaahi lelei 'i he ngaue fakataha mo e pou pou mei he ngaahi kautaha kehekehe pea kuo mau mamata tonu ki hono lelei 'o e ngaue fakataha;
- Ko **Taunga** 'i he kuohili, ko e me'a mo'ui na'e mahu, kaikehe na'e holo ia he 'osi ha ngaahi ta'u 'i he fa'iteliha 'a e toutai. 'I he hili 'emau kau ki he polokalama Feitu'u Pule'i Makehe, kuo fiemalie homau kolo 'i he tupulaki mo e leleiangē e ngaahi me'a mo'ui 'o tahi pea mo e tu'unga mo'ui lelei e ngaahi nofo'anga ika 'i homau matafanga.

Fehu'i 2: Fakamatala ha palopalema 'e taha pe ua 'oku fehanganagai mo e SMA pea ko e ha ha founa 'e ua ke solova'aki?

- Ko e kotoa e kau penolo na'a nau pehe ko hono tauhi mo hono fakamamafa'i e lao 'o e Feitu'u Pule'i Makehe ko e pole lahi taha ia. Ko e ngaahi me'a ngaue (hange ko e vaka le'o) 'oku fiema'u ke fakahoko lelei'aki e ngaahi fatongia. Na'e vahevahe 'e **'O'ua** na'e 'ikai ha'anau vaka le'o , kaikehe ko 'enau kole ne tali pea ne ma'u honau vaka mei he MORDI Tonga. Ko e kau penolo kehe na'a nau toe 'ohake e palopalema 'o e 'ikai ha vaka le'o pea na'a nau kole ha tokoni ki ai;
- Ko **'O'ua mo 'Atata**, ne lipooti 'oku nau fehanganagai mo e mole 'enau ngaahi poe faka'ilonga, 'a ia 'oku nau tui na'e tu'usi 'e ha motu kehe;
- 'Oku fehanganagai a **Ha'afeva** mo e kau toutai 'oku 'ikai ke lesisita ke toutai 'i he'enau Feitu'u Pule'i Makehe, 'a ia na'a ne 'ohake 'oku hoko ai e fepakipaki 'i he kolo. 'I he ngaue fakataha mo hono muimui'i 'o e ngaahi tu'utu'uni, kuo solova ai e palopalema ni.

Ngaahi talanga tefito 'i he talanga fakalukufua:

- **Koloa** (ta'u 'e 2): Ko e ngaahi kolo 'i he tafa'aki faka-Hahake 'o Vava'u, 'oku nau ma'u'anga mo'ui mei he toutai homau matafanga. Talu hono fokotu'u 'emau SMA, kuo mau ngaue mo e ngaahi kolo kaunga'api ke fa'u ha va 'oku melino;
- **Nomuka** (Ta'u 8): Kuo mau mamata he ika lalahi mo e takaniko 'i homau Feitu'u Pule'i Makehe. Kuo mau faka'ilo e ongo tangata na'a na fakatupu maumau 'i homau 'Elia Tapu (Feitu'u Malu'i 'a e Nof'anga 'o e Ika);
- **Talihau** (Ta'u 2): 'Ikai ha me'a ngaue ke fakakakato hono tauhi. Na'e tanaki ki ai 'e Dr Malimali 'oku ne pehe, 'i he lolotonga e "Green Day" 'a Talihau 'i he 2018, na'e tanaki 'e he kolo 'o tuku e fa'ahinga me'a mo'ui ki he 'Elia Tapu. Ko hono fokotu'u ha "Blue Day", na'e fokotu'u ki he ngaahi kolo ke 'ave ha me'a mo'ui 'e fa pe nima ki honau feitu'u tapu pea ke fokotu'u ha polisi fakakolo pe le'o ke tokoni ke fakasi'isi'i e kaiha'a mei he feitu'u tapu;
- **Kolomotu'a** (kolo 'ikai ke SMA): 'E lava ke tau ngaue'aki 'etau ngaahi vaka la ke polisi'i e Feitu'u Pule'i Makehe

TALANGA 2: FOUNGA TAKI/ FAI TU'UTU'UNI MO E FOUNGA TOKANGAEKINA E MA'U MAFAI 'A E PULE'ANGA

Penolo: *'Eiki Minisita Toutai, Semisi Fakabau, Kau Memipa 'o e Fale Alea: Siaoosi Sovaleni (Fakafofonga Tongatapu 3), Samiu Vaipulu (Fakafofonga Vava'u 15) pea mo Vatau Hui (Fakafofonga Niua).*

Tataki 'e: *Dr. Vailala Matoto.*

Ko e taumu'a 'o e talanga ni ke fakaafe'i e kau fakafofonga Fale Alea ke nau vakai ki ha ngaahi palopalema pe kupu 'oku mahu'inga felave'i mo e polokalama Feitu'u Pule'i Makehe, mei he tu'unga ma'olunga taha, i he Kapineti mo Fale Alea foki. 'Oku mahu'inga eni ke 'omai 'enau ngaahi tanaki ke fakaivia'aki e polokalama Feitu'u Pule'i Makehe, he ko e kau fakafofonga kinautolu 'o e kakai 'i Fale Alea pea 'oku nau fakahoko e ngaahi tu'utu'uni ma'ae fonua, mo talanoa'i ha founga ke toe lelelange hono poupou'i e polokalama Feitu'u Pule'i Makehe.

Ko e talanga ni na'e kamata 'i hono talanga'i ha founga ke poupouaki mo ngaue fakataha e Pule'anga mo e ngaahi kautaha fengae'aki:

- **'Eiki Minisita Toutai:** 'Oku 'i ai e ngaahi palopalema 'oku hoko mei he tafa'aki faitu'utu'uni 'i hono fokotu'u 'o e ngaahi Feitu'u Pule'i Makehe fo'ou, kae tautautefito ki Tongatapu.'Oku tupu tokolahiangae e fehikitaki mei he ngaahi motu (Niua, Ha'apai mo Vava'u) 'a e kakai pea ko 'enau ma'u'anga mo'ui fika 'uluaki ko e toutai. 'Oku faingata'a kiate kinautolu ke tali e ngaahi SMA ('i he tapuni e 'elia toutai) 'i ha 'elia hange ko Pangaimotu mo 'Eueiki, kaikehe 'oku nau fiema'u ke toe tokanga ange mo kau mai 'i he ngaahi talanga ke mahino e lelei 'o e ngaue. Tukukehe 'a e ngaahi palopalema ni, 'oku 'i he tu'unga lelei 'a e ngaue ki he SMA 'a Nukuleka, pea 'oku fie kau mo Fang'uta ki he polokalama SMA;
- **Sovalei:** 'Oku mahu'inga ke fai ha vakai ki he ngaahi lelei 'o e Feitu'u Pule'i Makehe, kae pehe ki he'ene uesia ki he kakai mo e ma'u'anga mo'ui 'a e kau toutai, 'o hange ko kinautolu mei he ngaahi kolo kaunga'api. Ko e ngaahi kolo, 'oku fiema'u ke lahi fe'unga 'enau ngaahi me'a ngaue ke muimui'i mo fakahoko e lao 'enau ngaahi SMA. 'Oku mahu'inga ke faka'aonga'i e kau polisi fakakolo pe kau le'o ki hono le'ohi e SMA, pea 'e toe lava ai ke nau fetokoni'aki mo e ngaahi kolo kaunga'api ke vahevahe e ngaue mo e ngaahi me'a ngaue;
- **Vaipulu:** 'Oku mahu'inga ke fakahoko ma'u pe ha ngaahi talanga mo ha ngaahi ako ke mahino lelei ki he kakai, tautautefito ki ha fakakaukau 'oku fo'ou (hange ko e polokalama SMA mo hono pule'i lelei e koloa 'o tahi, 'e 'ikai lelei pe ki he 'aho ni, ka ki he kaha'u foki);
- **Hui:** 'Oku ou poupou kakato ki he polokalam SMA pea 'oku ou faka'amu ke kole e kau Pule Fakavahe mo e kau 'Ofisa Kolo 'a Niua ke fakaafe'i ke kau ki he ngaahi polokalama ako SMA ke nau ako mo lava ke kau ki he polokalama.

Fehu'i: Ko e ha ha'o fale'i ki he ngaahi kolo ke nau ngaue fakataha mo poupou'i e polokalama Feitu'u Pule'i Makehe?

- Ko e fetu'utaki mo e felotoi 'oku mahu'inga ke tokoni ke fakasi'isi'i mo solova e ngaahi fepakipaki 'i he va 'o e ngaahi kolo mo e kau toutai;
- 'Oku mahu'inga ke matu'aki fakamamafa'i e ngaahi tu'utu'uni toutai (ke malu'i e ngaahi koloa);
- Ngaue'aki e ngaahi lao kehe 'e ala poupou ki he polokalama Feitu'u Pule'i Makehe, 'o hange ko e lao 'oku ne pule'i e kau 'Ofisa Kolo mo e kau Pule Fakavahe;

- Ko e kau Pule Fakavahe mo e kau 'Ofisa Kolo 'o e kolo SMA, kuo pau ke nau fakahoko ha talanoa ma'a mo mahino mo e ngaahi kolo kaunga'api 'i he tu'unga 'enau ngaahi SMA;
- Fakataha ki he ngaahi Feitu'u Pule'i Makehe ke fakahoko fakata'u, ke hokohoko hono talanoa'i pea mo solova e ngaahi palopalema;
- Kumi ha ngaahi faingamalie ke tokoni ki he SMA, 'o hange ke totongi pa'anga 'a e kau 'a'ahi pe folau'eva kuo fakangofua ke 'a'ahi ki he SMA;
- Ki hono fokotu'u ha ngaahi polokalama polisi fakakolo ke poupu ki he Feitu'u Pule'i Makehe, kole pe tohi kole ke 'ave ki he Fale Alea ki ha tokoni

Ngaahi talanga tefito 'i he talanga fakalukufua:

- Ko Nukuleka, na'a nau tokanga fekau'aki mo e kau toutai ta'efakalao 'oku nau hao pe 'o 'ikai ha ngaue fakalao ki ai ('oku felave'i eni pea mo e hia 'oku lolotonga fai e ngaue ki ai). Ko e talanoa fakamuimui taha 'o e hia ni, ne 'omai ia 'e he Talatalaki 'a e Kalauni, Joe Fifita, pea ne toe fakahoko foki ki he ngaahi kolo ke nau 'a'ahi ki he 'ofisi 'o e 'Ateni Seniale fekau'aki mo ha hia 'oku fiema'u ke fai ki ai ha ngaue fakalao;
- Ko e VEPA, na'a nau tokanga ki he ngaahi kolo SMA 'oku 'ikai ola lelei 'enau hopo 'i he fakamaau'anga mo tapou fekau'aki mo e fiema'u ke fakalelei'i 'enau founa fakamamafa'i 'o e lao ke malohi hono fakahoko e ngaahi faka'ilo 'i falehopo. Na'e toe tapou, ko e ngaahi kolo SMA kuo pau ke 'ave 'enau hia ki he kau Polisi, kae lava 'e he Pule'anga ke 'ave ia ki falehopo. Ko e ngaahi ngaue fakalao ko eni 'oku tefito 'i he Tu'utu'uni Toutai (Kolo Matatahi) 2009, Kupu 5;
- Na'e toe 'ohake e fiema'u ke fakalahi e patiseti 'a e Potungae Toutai ke fakatokolahi e kau ngaue mo ha ngaahi me'a ngaue ki he polokalama SMA.

TALANGA 3: FAKAIVIA 'O E NGAHI NGAUE FEITU'U PULE'I MAKEHE

Penolo: Napa'a Halatanu – 'Ofisa Kolo 'o Hunga, Koli Tala'aho Fituafe -'Ofisa Kolo 'o Matuku, Mina'ati Fifita -'Ofisa Kolo 'o Koloa, Viliami Latu -'Ofisa Kolo 'o 'Utulei, Tevita Tuiaki -'Ofisa Kolo 'o Holonga, mo Alaiva'a Moimoi - 'Ofisa Kolo 'o Ofu.

Tataki 'e: Salote Koloamatangi, Potungae Toutai

Ko e Talanga ni na'e kau mai ki ai e kau 'Ofisa Kolo (kau Sea honau Komiti Pule 'a e Kolo Matatahi) ke vahevahe 'enau ngaahi fakakaukau ki he fakalalakaka 'o e ngaahi Feitu'u Pule'i Makehe mo e tokoni 'oku fiema'u ke fakalelei'i'aki hono muimui'i, fakahoko totonu mo hono fa'u 'enau ngaahi palani (Palani Pule ki he Kolo Matatahi). Ko e kulupu ni na'a nau fakafongang'i e ngaahi Feitu'u Pule'i Makehe na'e fokotu'u 'i he 2017.

Fehu'i 1: Ko e ha e ngaahi founa ke fakalelei'i'aki e polokalama Feitu'u Pule'i Makehe pea mo fakalahi e ngaahi ola 'oku faka'amua?

- **Matuku:** Ko e toutai ko 'emau ma'u'anga mo'ui tefito ia. 'I he kamata, na'e 'ikai kemau loto ki he polokalama SMA, kaikehe na'a mau ako 'o 'ilo ko e founa lelei taha ia ki he fakalalakaka ki he kolo, he'e lelei ki he fanau mo e to'utangata 'o e kaha'u. 'Oku 'i ai e fiema'u ke faka'ai'ai e va fengau'e'aki mo e ngaahi kolo kaunga'api ke nau lava 'o tali e polokalama SMA mo hono ngaahi lelei;
- **Ofu:** 'Oku totonu ke tau fokotu'u mo ako mei he ngaahi kolo 'oku nau toe taukei lahiange 'i he polokalama ni;
- **Hunga:** Palani e ngaue ki ho Feitu'u Pule'i Makehe mo ho'o kolo pea muimui 'o fakatatau ki ai;
- **'Utulei:** Ngaue vaofi e 'Ofisa Kolo mo e kolo. 'I he ngaue fakataha, ko e me'a mo'ui 'i tahi 'e toe leliange, hange ko e vasuva mo e fai'ahu. 'Oku toe mahu'inga foki

ke fokotu'u ha ma'u'anga mo'ui kehe ke fakasi'isi'i e ngaahi ngaue fakatoutai, 'o hange ko e to kava;

- **Koloa:** Fokotu'u ha faama mokohunu 'i Koloa;
- **Holonga:** Hokohoko atu e ngaahi talanoa mo e ngaahi kolo fekau'aki mo e polokalama SMA.

Fehu'i 2: Ko e ha e ngaahi fiema'u mei ho'omou ngaahi kolo ke fakakakato mo fokotu'u ho'omou Palani Pule ki he Kolo Matatahi?

- 'Oku mahu'inga e ngaue fakataha ke fokotu'u e polokalama pea vahevahe hono ngaahi lelei;
- 'Oku fiema'u ke fokotu'u ha ngaahi ma'u'anga mo'ui kehe ke fakasi'isi'i e toutai he SMA, he ko e ni'ihi 'o e ngaahi famili 'oku 'ikai ha toe ma'u'anga mo'ui kehe ka ko e toutai pe. Hange ko e tokoni'i kinautolu ke kumi ha tokoni fakapa'anga ke nau kau ki ha ngaahi ma'u'anga mo'ui kehe;
- Hunga, Matuku, 'Utulei - na'a nau kole hanau vaka le'o. Na'e poupou'i eni fakataha mo e kole mei Makave, Mango, Fono mo Koloa;
- Na'e kole 'e Ha'atafu ha palau (tractor) ki he ngaahi famili 'oku toutai ke ma'u ha'anau mo'ui mei he ngoue

TAUKEI MEI HE NGAahi FONUA KAUNGA'API 'I HONO PULE'I FAKAKOLO 'O E TOUTAI - NGAahi TAUKEI MEI FISI

Na'e fakahoko eni 'e he ongo fakafongua mei he Kautaha 'o e Ngaahi Fonua 'a e Pasifiki (The Pacific Community (SPC)) (Mr. Watisoni Lalavanua, ko e 'Ofisa Ngaue ki hono Pule'i Fakakolo 'o e Toutai); pea mo e Kautaha 'oku 'iloa ko e FLMMA – Fiji Locally Managed Marine Area Network, 'a ia ko e kautaha 'oku ngaue felave'i mo e ngaahi 'elia tahi 'oku pule'i pe malu'i fakalotofonua 'i Fisi (Mr Kiniviliame Ravonoloa, ko e 'Ofisa 'oku ngaue he kautaha ni pea ko e fakafongua foki mei he komiuniti 'i Fisi).

Na'e fakahoko 'e Mr Lalavanua mei he SPC ha fakamatala fakalukufua ki he mahu'inga 'o e toutai he matafanga 'o e ngaahi vahefonua 'o e Pasifiki pea mo e 'uhinga 'oku fiema'u ai ke nga'unu e toutai ke pule'i 'e he ngaahi kolo. Ko e toutai he matafanga, 'oku ne 'omai e peseti 'e 50-90 'o e ngaahi polotini mahu'inga (protein) 'i he ma'u me'atokoni 'a e kolo, pea 'i he'ene pehe, 'oku mahu'inga ke malu'i koe'uhi ko e mo'ui lelei 'a e tangata kae pehe ki he 'oseni. Na'a ne fakamatala foki ki he ngaahi uesia mei he ngaue 'a e tangata ki he 'ataakai 'o e 'oseni mo e lahi 'a e ika, 'o hange ko e toutai fakavalevale'i 'o e ngaahi koloa toutai 'o e matafanga, fakaveve mo e fakatafe mei 'uta, 'ikai lelei e founa ngoue mo e toutai ta'efakapotopoto. Ko e founa pule'i 'o e toutai he matafanga, 'oku 'ikai ko hono pule'i pe 'o e ika, ka 'oku fekau'aki ia mo hono poupou'i e ngaahi kolo, mo e kotoa e ngaahi sekitoa 'i he kolo, 'o kau ki ai e kakai tangata, fefine, to'utupu mo e kakai 'oku uesia pe faingataa'ia, kuo pau ke faka'ai'ai ke nau kau ki hono pule'i fakakolo 'a e toutai, 'i ha founa 'oku fakakau mai ai e ngaahi kupu fekau'aki (partners) ke ngaue fakataha ki hono malu'i e ngaahi 'ataakai kehekehe 'oku felave'i pea mo tahi (ecosystems) (Community-based Ecosystem Approach to Fisheries Management (CEAFM)). Ko e CEAFM, 'oku ne fakafongua'i e fakakaukau 'e tolu: founa pule'i 'o e toutai, founa pule'i 'o e 'ataakai, mo e founa pule'i 'a e kolo.

Ko e SPC 'oku ne fakahoko ngaue ki he ngaahi fonua memipa 'e 15 'i he Pasifiki, 'a ia 'oku memipa ki he Kautaha 'Afilika, Kalipiane mo e ngaahi fonua Pasifiki (ACP), 'o kau ai 'a Tonga, 'i hono fakahoko 'o e nga'unu ko ia ki he CEAFM, 'o fakafou 'i he polokalama 'a e PEUMP, 'a ia ko e polokalama tokoni fakapa'anga ki he Pasifiki mei he Kautaha Fakatahataha 'a 'Iulope (European Union) mo Suiteni (Sweden), ki he ngaahi ngaue ki tahi pe 'oseni. Ko e ngaahi ngaue'a e polokalama ni 'oku kau ai hono:

- Poupou'i mo fakahinohino e nga'unu ki he pule' fakakolo 'o e toutai 'i he founa CEAFM;
- Fakahoko e ngaahi ngaue fakalotofonua ki he CEAFM 'o a'u ki he ngaahi kolo;
- Fakahoko e ngaahi ngaue fakafetu'utaki, mo hono fa'u mo tufaki e ngaahi fakamatala ki he ngaahi kolo;
- Fakahoko e ngaahi ngaue ki he ngaahi kolo, 'o kau ai e feinga ke feangai mo e ngaahi kolo.

'I hono vahevahe e ngaahi taukei ngaue mei he ngaahi vahefonua kaunga'api, na'e fakamatala'i 'e Mr Ravonoloa 'a e FLMMA, 'a ia na'e fokotu'u ia 'i he 2000 'e he ngaahi kolo (kinautolu 'o nau pule'i 'enau feitu'u toutai'anga pe ko e 'qoliqoli' 'i he lea faka-Fisi), ngaahi kautaha 'oku 'ikai fakapule'anga mo e pule'anga. 'Oku vave 'a e tupu 'a e ni'ihi 'oku kau ki he FLMMA, 'a ia kuo a'u mai taimi ni ki he ngaahi 'Elia Tapu 'e 466 'i loto 'i he ngaahi 'elia 'e 135 'oku tukufakaholo hono pule'i, 'a ia 'oku ne ma'u e peseti 'e 79 'o e 'elia matafanga kotoa 'o Fisi. Ko e FLMMA, 'oku tuamu'a ke vakai'i e ngaahi tefito'i palopalema 'i he kolo, hange ko e toutai ta'efakapotopoto mo e founa toutai fakavalevale, ko e tupulaki ko ia 'a e fa'ahinga limu 'oku 'iloa ko e Sargassum, founa pule'i mo tokanga'i 'o e veve, fatongia fakataki ke tokangaekina e 'ataakai, pea mo e palopalema 'i he tonounou e vai inu.

Na'e fakamatala 'e Mr Ravonoloa na'e fa'u 'a e FLMMA 'i he founa 'oku pule'i 'e he kolo pea nau toe lava pe ke fakalelei'i 'enau ngaue, 'a ia 'oku fa'u 'e he ngaahi kupu felave'i 'a e palani, pea nau fakahoko, muimui'i mo sivi'i hono lelei mo hono palopalema (Community-based Adaptive Management – CBAM). Ko e ngaahi fakatata'aki eni 'o e ngaahi ngaue kuo fakahoko, 'o kau ai hono fokotu'u e kau le'o ki hono polisi'i e konga tahi, polokalama ke toe tokanagaekina 'e he kolo 'a e toutai fakapotopoto, fakalelei'i mo e ngaahi ma'u'anga vai, fokotu'u mo e founa pule'i 'o e veve (hange ko e fakapopo, tanaki mo toe faka'aonga'i e veve (recycle), fakama'a e ngaahi matatahi mo e matafanga, kae pehe ki hono tokanga'i 'a e vai 'oku 'uli pe 'osi ngaue'aki (wastewater). Na'a ne toe tanaki ko e ma'u'anga mo'ui mo e ola lelei 'i he 'ataakai mei he ngaue 'a e FLMMA, kuo toe fakalahi 'o kau ai e toe lahiange e 'elia kuo kapui 'e he feo 'i he fa'ahinga kehekehe, toe tupulahi e fanga ika 'oku fakataumu'a ki ai e toutai pea kuo toe lahiange e fangaika 'aki ha peseti 'e 500. 'Oku toe ma'olunga ange e fa'ahinga 'o e ika 'oku ma'u me'atokoni mei he 'akau 'o tahi (hange ko e hohomo, pone) pea toe fakafanau tokolahi e fanga ika. Na'e lava foki ke fakahoko mo e ngaahi ngaue fakatakimamata mo e ngaue 'oku ma'u mei ai ha pa'anga, mei he ngaahi 'a'ahi 'a e fanau ako, kau fakatotolo mo e kau folau'eve'eva, 'o nau fakatotolo mo tokoni ki he ngaahi ngaue fakalalaka 'a e kolo.

NGAAHI MA'U'ANGA MO'UI 'OKU TU'ULOA MO HONO FAAMA'I 'O E ME'A MO'UI 'I TAHI

Tataki 'e: Dr. Siola'a Malimali, Potungaue Toutai

Na'e fakamatala 'e Dr. Siola'a Malimali 'a e ngaahi ngaue felave'i mo e ngaahi ma'u'anga mo'ui mo hono faama'i 'o e me'a mo'ui 'i tahi, 'a ia 'oku lolotonga fakahoko 'e he Potungaue Toutai ki he ngaahi kolo 'i he malumalu 'o e polokalama Feitu'u Pule'i Makehe. 'Oku kau ki heni 'a e laku 'o e ngaahi Poe Tauhele'anga Ika (FAD), poe tau'anga vaka 'a e ngaahi kolo ki he fakatakimamata, pea pehe ki he faama'i 'o e ngaahi me'a mo'ui 'i tahi ki hono fakatau atu fakalotofonua mo fakatu'apule'anga foki (hange ko e vasuva, limu, mokohunu). Na'a ne pehe 'oku ngaue 'a e Potungaue ki hono faama'i ko ia 'o e mokohunu, 'a ia 'oku tufa ki he ngaahi kolo Feitu'u Pule'i Makehe.

Ko e ngaahi fehu'i ni ne fai hono talanga'i 'i he ngaahi talanga fakalukufua²:

Fehu'i 1: Fokotu'u mai e ngaahi ma'u'anga mo'ui fakapotopoto mo tu'uloa ('i 'uta pe tahi) 'a ia 'e lelei ki he ngaahi Feitu'u Pule'i Makehe:

- Fanga ki'i faiva (floorshow), faama'i 'o e me'a mo'ui 'i tahi, lalanga 'a e kakai fefine (kau ai ha feitu'u ke fakahoko ai 'enau ngaahi ngaue fakalalanga), faama'i 'o e fanga monumanu (puaka, moa), toutai loloto, ngaue fakatakimamata 'oku 'ikai uesia ai e 'ataakai, toe ako'i 'o e ngaahi founa toutai tukufakaholo, mo e to ngoue kava.

Fehu'i 2: Fokotu'u e ngaahi ngaue fakatakimamata 'e lelei ki he ngaahi Feitu'u Pule'i Makehe:

- Ngaahi ngaue fakatakimamata 'oku 'ikai uesia ai e 'ataakai, hange ko e kau folau'eva'eva kenau 'ahia e ngaahi Feitu'u Pule'i Makehe mo e Ngaahi 'Elia Tapu (hange ko e uku 'o mamata he ngaahi me'a mo'ui 'i he Feitu'u Pule'i Makehe 'o 'Atata), mamata tofua'a, fakama'a 'o e 'ataakai mo faka'ai'ai e ngaahi founa toutai tukufakaholo mo tu'uloa (hange ko e no'o 'anga mo e hi 'atu. 'Oku toe mahu'inga foki ke vakai'i mo toe fakamahino'i ange e lelei 'o e ngaahi ngaue ni ki he ngaahi kolo Feitu'u Pule'i Makehe.

Fehu'i 3: Fokotu'u fakakaukau ki hono faama'i 'o e ngaahi me'a mo'ui 'i tahi?

- Ko e fa'ahinga me'a mo'ui 'oku fiema'u ke faama'i, ko e mokohunu mo e limu tanga'u.

TALANGA 4: NGAHI POTUNGAUE FELAVE'I 'A E PULE'ANGA PEA MO HONAU NGAHI FATONGIA 'I HE POLOKALAMA SMA

Penolo: Malia 'Avala - Potungau Feliliuaki 'a e 'Ea (MEIDECCC), Sulieti Hufanga -Potungau 'Atakai (MEIDECCC), Kataki Lea'aetua - Potungau Ngaue Fakalotofonua (MIA), 'Aleki Pongi -Potungau Kelekele mo e Ngaahi Koloa Fakanatula, Lu'isa Fihaki -Potungau Takimamata, Paha Fuavao - Potungau Malini mo e Poate Taulanga. Tatakai 'e: Mele Tauati, FAO.

Ko e talanga ni ne fakataumu'a ia ki he kau fakafofonga 'o e ngaahi Potungau Felalave'i 'a e Pule'anga ke fakamatala 'enau ngaahi fatongia 'oku fekau'aki mo e polokalama Feitu'u Pule'i Makehe, pea mo e founa te nau lava 'o toe tokoni'i ai e polokalama Feitu'u Pule'i Makehe. Ko e fakama'opo'opo eni 'o 'enau ngaahi tali:

- **Potungau Feliliuaki 'a e 'Ea (MEIDECCC):** Fakamamafa'i e mahu'inga ke mahino pea mo vakai'i e ngaahi uesia 'o e feliliuaki 'o e 'ea, hange ko e tupu ma'olunga 'a e tahi, toe lahiange e 'uha 'o ne uesia e ngaahi me'a mo'ui 'o 'oseni, ma'olungaange 'a e mafana 'a e tahi 'o ne fakatupu e mate 'a e feo mo tamate'i ai e ika mo e ngaahi me'a mo'ui kehe. Ko e Potungau 'oku nau faka'ai'ai e ngaahi ngaue 'oku 'ikai fu'u fakamole pa'anga, hange ko e to 'akau 'i he matafanga mo tauhi e 'ataakai ke ma'a;
- **Potungau 'Atakai (MEIDECCC):** 'Oku fengau'aki vaofi e Potungau 'Atakai mo e Potungau Toutai. 'Oku kau heni e ngaue fekau'aki mo e ngaahi Feitu'u Pule'i Makehe mo e Polokalama Palani Fakapule'anga ki he Potutahi 'o Tonga (MSP). 'Oku toe fakahoko foki 'e he Potungau 'Atakai e ngaahi tokoni fakatekinikale mo e ngaahi naunau ki he Potungau Toutai ke tokoni ki hono fakahoko mo muimui'i e Feitu'u Pule'i Makehe (hange ko e 'omai 'enau kau uku pe kau savea). Ko e Poloseki ki hono Fakaivia hono pule'i 'o e ngaahi Feitu'u Malu'i (SPAM),

² Koe'uhi ko e fu'u tokolahi e kau ma'u fakataha, na'e vahevahe pe ki he kulupu lalahi 'e fa.

'o fakafou 'i he Potungaue ki 'Uta mo Tahī 'a 'Itali, 'oku toe pou pou foki ki he ngaahi savea 'o e ngaahi me'a mo'ui 'i tahi, kae pehe ki hono fakalalakala'i mo hono fokotu'u 'o e ngaahi Feitu'u Pule'i Makehe mo e ngaahi 'Elia Malu'i (MPAs). 'Oku vahevahe foki 'a e ngaahi 'ilo mo e ngaahi fakamatala ki he Potungaue Toutai, hange ko ia mei he 'u savea mokohunu, mo fa'u ha founga ke toe lelelange e ngaue fakataha;

- **Potungaue Takimamata:** Ko e Potungaue Takimamata 'oku ngaue fakataha ia mo e ngaahi kupu fengau'e'aki 'i he Polokalama Palani fakafonua ki he 'oseni 'o Tonga (MSP), 'a ia 'oku ne 'omi e founga pule ki he 'oseni kotoa 'o Tonga, pea fakahoko e ako ki he ngaahi kolo fekau'aki mo e mahu'inga e kau ki he polokalama. Ko e mamata tofua'a, ko e ngaue mahu'inga ia ki he Potungaue pea mo e ni'ihi 'o e ngaahi kolo Feitu'u Pule'i Makehe 'oku kau ki ai. 'Oku 'i ai e ngaahi palopalema 'i he va 'o e ngaahi kautaha mamata tofua'a mo e ngaahi kolo Feitu'u Pule'i Makehe, pea ko ia 'oku mahu'inga ai e fetu'utaki mo femahino'aki. 'Oku toe ngaue foki e Potungaue ke fakasi'isi'i e ngaahi pisinisi felave'i mo e mamata tofua'a. Ko e ngaahi ngaue fakatakimamata 'a ia 'oku fakapotopoto, tu'uloa pea 'ikai uesia ai e 'ata kai, 'oku lelei ia ke fakahoko 'i he ngaahi Feitu'u Pule'i Makehe;
- **Potungaue Ngaahi Ngaue Fakalotofonua:** 'Oku ngaue fakataha e Potungaue ni pea mo e kotoa e kau Pule Fakavahe mo e kau 'Ofisa Kolo, kau ki ai hono tokonia ke kau ki he ngaahi fakataha 'oku felave'i mo e polokalama Feitu'u Pule'i Makehe. Kuo lahi e ngaahi kolo 'oku 'ikai ke nau mahino'i e ngaahi tu'utu'uni 'o e Feitu'u Pule'i Makehe, ko ia ai, 'oku 'i ai e fiema'u malohi ke fakahoko ha ako mo ha fakataha ke fakalahi e 'ilo ki he ngaahi Feitu'u Pule'i Makehe mo hono ngaahi lao;
- **Potungaue Kelekele mo e Koloa Fakanatula:** Felave'i mo e ngaahi palopalema 'oku fehangahangai mo e ngaahi Feitu'u Pule'i Makehe, ko e potungaue 'oku nau siofi e lao 'oku ne pule'i e kelekele, 'o kau ki ai e matafanga pe ngaahi 'elia matatahi ('a ia ko 'uta ke 'i he fute 'e 50 (mita 'e 15.24) 'i 'olunga he ngata'anga 'o e hu'a 'a e tahi 'oku 'i he malumalu 'o e Kalauni). 'Oku pule'i foki 'e he Potungaue ni e ngaahi ngaue ki he tata'one'one mo hono fokotu'u e ngaahi Paaka Fakafonua. Ko e ngaahi Paaka Fakafonua, ko e fili ia 'e taha ki he ngaahi kolo Feitu'u Pule'i Makehe ke tokoni ke ne pule'i mo fakasi'isi'i e tata 'one'one;
- **Malini mo e Poate Taulanga:** Felave'i mo e tokoni 'a e Potungaue ki he ngaahi kolo Feitu'u Pule'i Makehe fekau'aki mo e ngaahi palopalema hono ngaue'aki mo hono laku 'o e ngaahi poe tau'anga vaka ('i he ngaahi Feitu'u Pule'i Makehe/ Feitu'u Tapu), na'e fakamahino mai ko e fatongia pe 'o e Potungaue ko hono pule'i e ngaahi poe tau'anga vaka 'oku 'i loto taulanga.

Ngaahi talanga tefito 'i he talanga fakakatoa 'oku hoko mai:

- 'I hono fakahoa 'a e lelei hano faka'ataa e tofua'a ke toutai'i mo e ngaahi ngaue fakatakimamata ki he tofua'a, na'e fakapapau'i mai 'oku lahi e ma'u'anga pa'anga 'a e tokolahi mei he mamata tofua'a. 'Oku 'i ai mo e ngaahi tu'utu'uni ke pule'i'aki e ngaahi ngaue ni.

MUIMUI'I, PULE'I, LE'OHI MO HONO FAKAMAMAFA'I E LAO FEITU'U PULE'I MAKEHE

Tataki 'e: Poasi Ngaluafe, Potungaue Toutai

Na'e fakahoko 'e Poasi Ngaluafe ha lea felave'i mo e ngaahi founga ngaue 'oku fakahoko 'e he Potungaue Toutai ki hono fakamamafa'i mo fakahoko e ngaue fakalao ki he ngaahi Feitu'u Pule'i Makehe. 'Oku fakatefito eni mei he ngaahi Palani Pule 'a e 'u Kolo Matatahi mo e ngaahi tu'utu'uni pe lao toutai 'oku felave'i pea mo e SMA, pehe foki ki he ola mei he ngaahi fengau'e'aki 'a e Potungaue mo e ngaahi Komiti Pule ki he Kolo Matatahi (CCMC). Ko e Potungaue Toutai 'oku nau vakai ki he 'elia 'e fa ki

hono ako'i 'o e Lao mo hono fakamalohi'i e ngaahi tu'utu'uni 'o e polokalama Feitu'u Pule'i Makehe:

- Fokotu'u ha kau 'ofisa le'o 'o e kolo matatahi ke fakapapau'i e ngaahi lao toutai 'oku muimui'i, hange ko hono tapui ha ngaahi founa toutai 'e ni'ihi, pea mo hono tapu'i fakataimi 'o e fa'ahinga me'a mo'ui 'e ni'ihi hange ko e 'unomoa;
- Ngaue fakataha mo e kau polisi pea mo e kau sotia 'i hono muimui'i mo le'ohi e 'oseni, ke fakapapau'i ko e ngaahi vaka toutai 'oku laiseni pea mo faipau ki he ngaahi tu'utu'uni 'o e laiseni toutai;
- Muimui'i fakasatelaite 'o e ngaahi vaka toutai komeisiale (Automatic Identification System (AIS));
- Ngaue fakataha mo e Poate Taulanga 'i hono fakapapau'i ko e ngaahi vaka toutai 'oku muimui ki he ngaahi tu'utu'uni 'a e lao.

Na'a ne toe tanaki mai e ngaahi fatongia 'o e Potungae, 'o kau ai hono fakahoko e ngaahi fakataha mo e ngaahi ako ki he 'u kolo Feitu'u Pule'i Makehe ki he founa hono muimui'i 'enau ngaahi Palani Pule, pea mo hono fakamamafa'i e lao toutai, 'o kau ai e lao ki he 'Elia Tapu.

Ke toe leleiangae hono fakahoko mo fakamalohi'i 'o e lao, ko e hopo toutai ta'efakalao kotoa pe, kuo pau ke ne 'omai e ngaahi fakamo'oni malohi ki falehopo. Ne 'omai ai 'e Ngaluafe e ngaahi me'a 'e tokoni ki he ngaue ni:

- Ko e Komiti Pule, 'oku nau fatongia'aki hono fokotu'u e palani le'o ki honau Feitu'u Pule'i Makehe. 'E fiema'u ha ongo le'o 'e tokoua pe toe lahiange ke malu'i e 'elia, pea ngaue mo e kau fakamo'oni ke lipooti ha me'a 'e hoko;
- Tomu'a vakai hono solova fakalotofale pe faka-e-kinautolu e ngaahi hia ('o kapau 'e lava) pea toki lipooti ki he Potungae Toutai. 'E tokoni foki ke kumi ha talatalaifale pe fale'i mei he Potungae Polisi;
- Fakapapau'i 'oku 'i ai ho'o me'a ngaue mo naunau ke tanaki'aki e ngaahi fakamo'oni 'e fiema'u ke 'ave ki he fakamaau'anga;
- Fakapapau'i 'oku lekooti fakalelei 'a e ngaahi fakamatala kotoa pe felave'i mo ha toutai ta'efakalao. 'Oku 'i ai e foomu ke lekooti ai e hia na'e fokohoko, hingoa e tokotaha toutai faihia, hingoa e vaka, 'aho mo e taimi mo e fa'ahinga toutai na'e ma'u;
- Ko e ngaue fakataha 'a e taha kotoa he kolo mo e Komiti Pule 'oku mahu'inga, kae pehe ki he ngaue fakataha mo e ngaahi kupu fengaue'aki ke tokonia e ngaahi kolo.

Na'e toe tanaki heni mo e ngaahi fakaikiiki ki he ngaahi naunau 'oku fiema'u ke fakahoko e lao SMA mo tanaki e ngaahi fakamo'oni:

- Me'afaita, GPS, telefoni mo e vaka le'o. 'I he taimi 'e tu'usi ai 'e he kau kaiha'a e poe fakangatangata, ko e GPS te ne 'omai e feitu'u na'e hoko tonu ai pea mo fakapapau'i pe na'e hoko 'i loto pe 'i tu'a he ngatangata'anga;
- 'Oku teuteu'i mo e tohi fakamo'oni ke ne lekooti kotoa hono fakaikiiki, 'o kau ai e me'a ngaue na'e ngaue'aki ke tanaki'aki e fakamo'oni, ke 'ave ki he fakamaau'anga.

Na'e fakama'opo'opo'aki 'e Ngaluafe 'o ne pehe, ko e ngaahi tu'utu'uni toutai 'oku fu'u mahu'inga lahi ke fakapapau'i 'oku malu e ngaahi me'a mo'ui 'o tahi. 'Oku fiema'u foki ke mahino 'a e ngaahi tu'utu'uni toutai, kae malava ke mahino'i lelei 'e he kakai 'o e fonua.

Talanga tefito 'i he talanga fakakatoa:

- Ko e kole mei Ha'ano ne fakahoko ki he Potungae Toutai ke fakahoko ha ako ki hono toutai'i 'o e feke pe ko e 'atu. Na'e tali 'e he Potungae 'a e kole na'e fakahoko.

TALANGA 5: FEPOTALANO'A'AKI MO E NGA'AAHI KUPU FENGAUE'AKI MO E NGA'AAHI KAUTAHA FAKAPA'ANGA

Penolo: Brian Fusimalohi - SPAM Project (MEIDECCE), 'Ofeina Filimoehala - Tonga Health, Ikenasio Taulangovaka - MORDI, Lisa Fanua - VEPA; Vanessa Lolohea - Sosaieti Sivile.

Tataki 'e: *Dr Siola'a Malimali (Potungaue Toutai).*

Ko e talanga ni na'a ne'omai 'e he kau fakafofonga mei he ngaahi kautaha fakapa'anga mo e ngaahi kupu fengaue'aki, hange ko e ngaahi kautaha 'oku 'ikai fakapule'anga mo e sosaieti sivile. Kuo nau kau mai ki he polokalama Feitu'u Pule'i Makehe 'i hono 'omi e pa'anga ki hono fokotu'u mo fakalele'aki e ngaahi Feitu'u Pule'i Makehe, pou pou ki he ngaahi ma'u'anga mo'ui kehe pea mo foaki e ngaahi me'a ngaue ke tokoni ki hono kolo matatahi.

Fehu'i 1: Ko e ha e ngaahi ngaue 'oku fakapa'anga 'i ho'o polokalama 'a ia 'oku pou pou ki he ngaahi Feitu'u Pule'i Makehe?

- Tokoni'i hono fokotu'u mo hono fakalalakaka'i 'o e ngaahi Feitu'u Pule'i Makehe, 'o fakafou 'i he tokoni fakapa'anga mo foaki e ngaahi me'a ngaue;
- Fakahoko e ngaahi talanga 'i he ngaahi kolo 'i he ngaahi kaveinga kehekehe 'o kau ai 'a e founa pule 'a e kolo, 'ataakai mo e koloa 'o 'oseni, me'atokoni mo'ui lelei mo e ngaahi polokalama ma'u'anga mo'ui, pea mo e ngaahi polokalama pule'i 'o e 'oseni hange ko e Pule'i Fakafonua 'o e 'oseni 'o Tonga (MSP) pea mo e polokalama Feitu'u Pule'i Makehe;
- Pou pou'i e ngaahi polokalama ma'u'anga mo'ui kehe 'o kau ai e ngoue, fakalalakaka'i e ngaahi ngaue fakatakimamata 'oku 'ikai uesia ai e 'ataakai mo hono tauhi 'o e fanga monumanu (fanga moa);
- Ngaahi polokalama ki hono tokangaekina 'o e 'ataakai, hange koe fakama'a kolo mo fakasi'isi'i e 'auhia 'a e matafanga;
- Ngaahi polokalama ako 'i he ngaahi kaveinga faka'ataakai.

Fehu'i 2: Ko e ha e ngaahi faingata'a 'oku hoko lolotonga homou pou pou ki he polokalama Feitu'u Pule'i Makehe?

- Ko e pa'anga 'oku vahevahe ia ki he ngaahi ngaue 'a e kolo mo hono fakakau mai 'a e kau ngaue 'a e Potungaue Toutai 'i hono fokotu'u ha Feitu'u Pule'i Makehe fo'ou;
- Ko e toloi mo 'ikai ma'u fakataha, 'oku 'ikai fakafiemalie, ko e toe lelelange e fetu'utaki mo fakalele e ngaahi fakataha 'e kaunga lelelange ia;
- Ko e vaha'a taimi hono fakapa'anga e poloseki 'oku taimi nounou 'i he vaha'a ta'u 'e 1 ki he 5, ka 'oku 'ikai fenapasi mo e vaha'a taimi mo e founa ngaue ki hono fokotu'u ha Feitu'u Pule'i Makehe fo'ou;
- Ko e hono muimui'i mo hono sivilivivi'i e ngaue ko e ngaue mahu'inga ia, mo e malava ke vahevahe e ngaahi fakamatala 'oku mahu'inga fau ia ki he kotoa 'o e ngaahi kupu fengaue'aki;
- 'Oku mahu'inga ke fakaivia e va fengaue'aki 'i he vaha'a 'o e Pule'anga mo e ngaahi kupu fengaue'aki pea mo toe fakalahi e fetu'utaki mo e fakafetongi 'o e 'ilo ke lave'i 'e he ngaahi kupu kotoa.

'Aho Ua - 1 'O Me 2019

'A'AHKI KI HE FEITU'U PULE'I MAKEHE 'O E KOLO KO OVAKA

Ko e kau ma'u fakataha, ne nau fononga atu 'i he vaka ki he Feitu'u Pule'i Makehe 'o e motu ko Ovaka, Vava'u. Ko Ovaka ko e Feitu'u Pule'i Makehe motu'a taha ia 'i Vava'u, 'a ia na'e fokotu'u 'i he 2008. Ko e Pule Fakavahe 'o e ngaahi motu, 'Ulaiasi Vaisima mo e 'Ofisa Kolo 'o Ovaka, Pasimata Vaisima, na'a na fakalele e polokalama, fakataha mo e tu'u tafa'aki 'a e kainga Ovaka.

Lolotonga 'ene lea fakaava, na'e tuku mai 'e Pasimata e fakalukufua 'o e hisitolia pea mo e fakalalakaka 'a e Feitu'u Pule'i Makehe 'a Ovaka, 'a ia na'e kamata'i 'e he Matapule ko 'Tu'ihalamaka' 'o Ovaka mo e visone "ko e oseni ko ha ma'u'anga mo'ui ia ki he to'utangata 'o e kaha'u". Na'e fakaafe'i 'e he Potungaue Toutai e kolo ko Ovaka ken au kau ki he polokalama Feitu'u Pule'i Makehe 'i he 2008. Talu mei ai, mo e poupou mei he ngaahi kupu fengaue'aki pea kuo ngaue ta'etoe malolo ai e kainga 'o Ovaka 'i hono pule'i honau Feitu'u Pule'i Makehe mo fakatupulaki hono ngaahi koloa 'i 'oseni.

Talu mei he 2008, kuo tofanga e kolo ko Ovaka he ngaahi monu mei he ngaahi kautaha fakapa'anga lahi, pea mo e poupou mei he kautaha 'oku 'ikai fakapule'anga 'i hono foaki e ngaahi me'a ngaue mahu'inga mo fakahoko e ako ke ne fakaivia e founga pule 'a e kolo, tautefito ki he ngaahi ma'u'anga mo'ui kehe mo e ngaahi polokalama langa fakalalakaka 'a e kolo.

FAKATATA 1

Ko e 'Eiki Minisita Toutai mo e ni'ihii 'o e kau ma'u fakataha 'i he toumu'a 'o e 'Elia Tapu (FHR) 'o Ovaka



©VEPA

'Aho Tolu - 2 'O Me 2019

TOKONI FAKATEKINIKALE MEI HE FAO KI HE POLOKALAMA FEITU'U PULE'I MAKEHE

Tataki 'e: Mele Tauati (FAO)

Na'e talanoa 'a Ms Tauati ki he ngaahi tokoni fakatekinikale 'a e FAO ki he polokalama Feitu'u Pule'i Makehe 'i he ngaahi ta'u kimui ni. Na'e kau heni: 1) Hono toe vakai'i pe sivi'i 'o e polokalama Feitu'u Pule'i Makehe (na'e fakahoko he 2016-2017), mo e 2) Fakahoko e ngaahi fokotu'u tefito mei hono sivi'i 'a e polokalama (lolotonga fakahoko).

Ko e ola 'o e sivi 'o e Feitu'u Pule'i Makehe, ne tefito ia 'i he 'u fakataha mo e ngaahi kautaha fengaue'aki fakalotofonua, 'o kau ai e 'a'ahi ki he ngaahi Feitu'u Pule'i Makehe 'i Vava'u, Ha'apai pea mo Tongatapu 'i he 2016, ke vakai'i e ngaahi palopalema tefito mo fokotu'u ha ngaahi founa ke fakalakalaka'i'aki e polokalama SMA. Ko e palopalema tefito ne ma'u mei he sivi ni, ne kau ai e fehu'i pe ko e polokalama Feitu'u Pule'i Makehe 'oku fekau'aki mo e fakalelei'i e koloa he matafanga, pe 'oku lahi pe ki he ngaahi ngaue fakalakalaka 'a e ngaahi kolo, fu'u lahi e ngaue ke fakahoko 'o fakahoa ki he tokolahi 'o e kau ngaue, 'ikai fakapapau'i e lelei hono muimui'i e Feitu'u Pule'i Makehe, lahi e fakamole ki hono fokotu'u e Feitu'u Pule'i Makehe fo'ou, pea mo e tokanga ki he ngaahi kolo 'oku 'ikai tu'u he matafanga 'i hono ta'ofi 'enua toutai 'i he matafanga (tokanga mei Tongatapu mo Vava'u). 'I he'ene pehe, ne fokotu'u mei he sivi ni, ke toe fakalelei'i e ngaahi founa ngaue 'a e Potungaue Toutai, 'i ha founa 'e lava ai ke holoki e ngaue mo e fakamole, mo vakai'i e ngaahi uesia 'o e polokalama Feitu'u Pule'i Makehe ki he ngaahi kolo 'oku 'ikai ha'anau matatahi.

'I hono fakahoko e ngaahi fokotu'utu'u ko eni, na'e fakama'opo'opo ai e ngaahi ngaue 'i he poloseki 'oku lolotonga fakahoko 'e he FAO ke tokoni (fakatekinikale) ki he polokalama Feitu'u Pule'i Makehe:

- Fa'u ha tohi fakahinohino ki he Feitu'u Pule'i Makehe ma'ae Potungue, 'o fakatefito 'i hono fokotu'u mo hono muimui'i e SMA;
- Fakahoko e ngaahi ako 'i he tohi fakahinohino kuo fa'u;
- Fa'u ha polokalama ke tokoni ki he Potungaue 'i hono tanaki e ngaahi fakamatala ma'ae polokalama Feitu'u Pule'i Makehe;
- Vakai'i e uesia fakasosiale mo faka'ekonomika 'o e polokalama Feitu'u Pule'i Makehe ki he ngaahi kolo 'oku 'ikai tu'u he matafanga;
- Tokoni ke toe lahiange 'a e 'ilo ki he polokalama Feitu'u Pule'i Makehe.

TU'UNGA FAKALAO 'O E NGAHI FEITU'U PULE'I MAKEHE

Tataki 'e: 'Eiki Fakamaau Lahi, Salesi Mafi; Salote Koloamatangi, Potungaue Toutai

Ko e taumu'a 'o e talanga ni, ke fakamatala mo fakama'ala'ala e lao 'a ia 'oku kau ki he totonu mo e tau'atina 'a e Tonga ('i he 'ataakai 'o e toutai), mo e ngaahi fiema'u ki hono fa'u mo fakahoko e ngaahi lao toutai felave'i pea mo e ngaahi Feitu'u Pule'i Makehe.

Ko e 'Eiki Fakamaau Lahi, Salesi Mafi, na'a ne fakaava e talanga ni 'aki e vakai fakalukufua ki he Konisitutone 'o Tonga 'a ia 'oku ne fakamatala'i e totonu 'a e Tonga, ko e va'a 'e tolu 'a e pule'anga pea mo e lao ma'olunga taha 'a e Pule'anga Tonga.

Na'e tuku mai 'e Salote Koloamatangi ha vakai fakalukufua ki he ngaahi lao 'oku ne pule'i mo felave'i mo e ngaahi Feitu'u Pule'i Makehe, kae tautautefito ki he ngaahi Feitu'u Pule'i Makehe 'oku pule'i 'e he ngaahi kolo (Tepile 2).

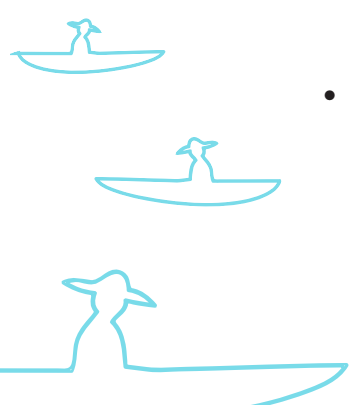
TEPILE 2

Fakaikiiki 'o e ngaahi lao 'oku ne pule'i pe felave'i mo e polokalama Feitu'u Pule'i Makehe.

Lao	Vakai fakalukufua
Lao Konisitutone	Ko e Konisitutone, ko e lao mahu'inga mo ma'olunga taha 'a e Pule'anga Tonga, ko e lao ia 'oku ne fakamatala e ngaahi fatongia 'o e Tu'i, Fakamaau, Fale Alea mo e Fakataha Kapineti mo e founa fakalele 'o e Fale Alea. Ko e konisitutone 'oku ne fakamatala'i e tau'atina mo e totonu 'a e kakai Tonga.
Lao ki he Toutai 2002	'Oku ne fakamatala e founa hono fokotu'u mo vahe'i ha kolo matatahi ke ne pule'i 'a e toutai, mo e totonu mo e ngaahi fatongia 'o e kolo ki he Feitu'u Pule'i Makehe. 'Oku kau foki ai e kupu ke fa'u ha ngaahi tu'utu'uni felave'i pea mo e Feitu'u Pule'i Makehe kuo fokotu'u (vakai ki lalo).
Ngaahi Tu'utu'uni ki he Toutai (Kolo Matatahi) 2009	<p>Ko e ngaahi Tu'utu'uni kuo fokotu'u 'i he malumalu 'o e Lao Toutai 2002, 'oku 'i ai e ngaahi kupu ki ha kolo matatahi mo e Feitu'u Pule'i Makehe kuo vahe'i ki ai. 'Oku ne fakamatala 'a e:</p> <ul style="list-style-type: none"> • Ngata'anga 'o ha Feitu'u Pule'i Makehe (ke 'i loto he mita 'e 2,500 mei he ngata'anga e hu'a 'a e tahi 'o lele ai ki tahi, pe 'oua toe loloto ange he fua loloto ko e mita 'e 50); • Founa hono fokotu'u ha Komiti Pule ki he Kolo Matatahi, ko hono fatongia mo hono ngaahi ngafa (na'e liliu 'a e tu'utu'uni ko eni 'i he 2016, 'a ia 'oku 'ikai toe fiema'u e 'Ofisa Kolo ke sea he komiti). 'Oku ne toe fakaha foki e ngaahi hia 'oku fakahoko ki ha memipa 'o e komiti; • Fatongia 'o e Potungae Toutai ki hono poupu'u e Feitu'u Pule'i Makehe mo 'ene Komiti Pule; • Ngaahi tu'utu'uni ki he toutai 'i he Feitu'u Pule'i Makehe pea mo e founa hono fakamafai'i ha taha ke toutai he Feitu'u Pule'i Makehe (fakafou he lesisita), kau ai e tu'utu'uni ke fokotu'u ha 'Elia Tapu 'i he loto Feitu'u Pule'i Makehe. <p>'Oku kau foki mo e ngaahi mape mo e fakaikiiki 'o e ngata'anga 'o e kotoa e ngaahi Feitu'u Pule'i Makehe kuo fokotu'u mo kasete'i.</p>

Ngaahi talanga fakalukufua:

- Ko e Konisitutone 'o Tonga ko e Lao fakaleveleva ia pea 'oku ma'olunga taha 'i he kotoa 'o e lao. Ko e tu'utu'uni fo'ou kotoa pe kuo fa'u, kuo pau ke 'ikai fepaki mo e Konisitutone pea 'e fiema'u ke sivi'i kimu'a pea toki kasete'i;
- Koe'uhi ko hono 'omi ko ia 'e he Konisitutone e totonu 'a e kakai Tonga, 'oku 'i ai e tokanga ki he ngaahi Feitu'u Pule'i Makehe 'o pehe, 'oku ne tapui pe fakangatangata e totonu 'a e kakai ke toutai 'i he Feitu'u Pule'i Makehe ('o pehe ko e lao siokita ia). 'I he tafa'aki 'e taha, 'oku ne fakamamafa'i ko e tu'utu'uni SMA 'oku lelei ki he kaha'u 'etau koloa 'i oseni, pea ke ne ta'ofi e ngaahi palopalema mei he toutai ta'efakapotopoto mo hono ngaahi maumau. Ko e fatongia ia 'o e ngaahi kolo Feitu'u Pule'i Makehe, ke fakapapau'i 'oku nau fakahoko lelei honau fatongia;
- Ki ha fa'ahinga fakalelei pe liliu 'i ha Palani Pule 'oku fiema'u ke fakalao'i, ko e liliu kotoa pe kuo pau ke fai hano sivi'i 'e he Potungae Toutai pea fakapaasi 'aki hono kasete'i;



- Ko e tu'utu'uni lolotonga, 'oku 'ikai ngofua e toutai 'i he Feitu'u Pule'i Makehe ('a e ni'ihii 'oku 'ikai lelesita ke toutai), ka 'oku ngofua pe 'a e li taula. Na'e fai e fokotu'u ke fa'u ha lao fo'ou ke tapu'i e li taula koe'uhi ko e ngaahi maumau 'oku ne fakatupu. Na'e toe fakamahino foki 'oku 'ikai ngofua ki he ngaahi kolo SMA ke ta'ofi 'a e kolosi e ngaahi vaka 'i honau 'elia Feitu'u Pule'i Makehe;
- 'Oku 'i ai e fiema'u ke toe lelelange hono tokangaekina mo hono fakamahino e kotoa e ngaahi lao ('o 'ikai ko e Lao Toutai pe) koe'uhi ko e ngaahi matavaivai 'i he lao. Na'e 'i ai e fokotu'u ki he ngaahi kolo Feitu'u Pule'i Makehe, ke nau lipooti ha ngaahi palopalema ki he Minista 'a e Potungau e 'ohake ia 'i Fale Alea;
- Koe'uhi ko e taimi pe toloi loloa hono fakapaasi (Kasete'i) e ngaahi tu'utu'uni fo'ou ki ha Feitu'u Pule'i Makehe kuo fokotu'u fo'ou, na'e vakai 'a e 'Ofisi Lao ki he palopalema ni, 'o pehe ke ngaue'aki e tu'utu'uni pe 'e taha ke ne pule'i e tu'unga fakalukufua pea mo e lao ki he ngaahi Feitu'u Pule'i Makehe. 'Oku toe malava ke tanaki atu ha ngaahi tu'utu'uni iiki pe makehe 'oku fiema'u 'e he kolo ki he'enu Feitu'u Pule'i Makehe, 'o fakatau ki he'enu Palani Pule. Fakata'aki, ko e Feitu'u Pule'i Makehe ko 'Eueiki, ko e Feitu'u Pule'i Makehe pe ia 'oku fakangatangata ai e lahi e feke ke toutai'i (kuo pau ke lahi hake 'i he senitimita 'e 60 hono loloa) pea ko e Feitu'u Pule'i Makehe 'o Ovaka 'oku fokotu'u ai 'enu feitu'u malu'i ('Elia Tapu) ki he 'uo mo e vasuva;
- 'Oku 'i ai e fiema'u ki he Fale Alea ke vakai'i e ngaahi palopalema fakalao felave'i mo e ngaahi ngaue fakatakimamata 'i he loto Feitu'u Pule'i Makehe, tautautefito ki he ngaahi vaka 'oku nau ngaue'aki e 'elia Feitu'u Pule'i Makehe. Na'e toe fokotu'u ke fa'u ha lao ke totongi ha pa'anga ki he komiti Feitu'u Pule'i Makehe ki hono fakahoko ha fa'ahinga ngaue fakatakimamata 'i he Feitu'u Pule'i Makehe;
- 'Oku 'i ai e fiema'u ke fakaha mahino ki he kakai 'o e fonua 'a e ngaahi tu'utu'uni ki he Feitu'u Pule'i Makehe;
- 'Oku mahu'inga ke fakapapau'i 'oku tanaki lelei 'a e ngaahi fakamatala mo e fakamo'oni ki ha hia toutai ke kakato hono 'ave ki he fakamaau'anga;
- 'Oku fiema'u ke toe fengaue'aki vaofi ange 'a e kau 'ofisa polisi mo e ngaahi kolo Feitu'u Pule'i Makehe, pea ke tokoni 'a e kau 'ofisa polisi ki he ngaahi kolo 'i hono fakamamafa'i 'o e lao;
- 'I he ngaue ki he ngaahi vaka 'oku 'ikai ke lelesita, ka 'oku kolosi 'i he loto 'Elia Tapu, 'oku 'ikai ngofua eni ka 'oku mahu'inga ke ke a'u tonu ki he vaka 'o vakai na 'oku nau faingata'a'ia pe 'i ha tu'unga fakatu'utamaki.

NGAAHI SENALIO MEI HE KOLO 'I HE NGAABI NGAUE FAKALAO

Lolotonga e talanga ni, na'e tatakii 'e he 'Eiki Fakamaau Lahi, Salesi Mafi 'a e ngaahi senalio, 'o fakatefito 'i he ngaahi palopalema 'o e toutai ta'efakalao 'a ia 'oku fehangaangai tonu mo e ngaahi kolo Feitu'u Pule'i Makehe. Ko e talanga ni 'oku fakataumu'a ke vahevahe e ngaahi lesioni tefito kuo tau ako mei ai, ke tokoni ki ngaue 'a e ngaahi kolo Feitu'u Pule'i Makehe 'i hono fakahoko mo fakamamafa'i e lao, 'a ia 'oku mahu'inga ki hono teuteu'i ke fakahu ha launga 'o ha hia toutai ki he fakamaau'anga.

Na'e fakataataa'i 'e he ni'ihii 'o e kau ma'u fakataha mo e 'Eiki Fakamaau Lahi ha senalio 'e 4. Ko e ni'ihii 'o e ngaahi senalio ko eni 'oku fakaiiki'i ia heni:

Senalio 1: Ko e tokotaha toutai 'oku 'ikai ke lelesita ke toutai 'i he SMA, na'e kolosi 'i he SMA 'i ha vaka na'e 'osi lelesita, pea ta'ofi 'e he taba 'o e memipa 'o e Komiti 'a e vaka, 'o ne 'ilo 'oku 'i ai e ika 'i loto vaka.

- Fakamo'oni: ko e fakamatala ki he hia na'e fakahoko;
- Talatalaaki: Ko e vaka na'e 'osi lesisita ia 'e he famili, ka ko e tangata toutai 'oku 'ikai ke lesisita. 'Oku 'ikai ha fakamo'oni fe'unga ke fakapapau'i na'e toutai'i e ika 'i loto 'i he SMA, 'o hange ko eni: na'e 'ikai ha fakamo'oni pau, pe la'i ta ('ata) pe vitio 'o e hia na'e fakahoko. Ko e tohi talatalaaki na'e vaivai 'aupito koe'uhi ko e si'isi'i e fakamo'oni. Fakatatau ki he ngaahi fakamatala ko eni, 'e 'ikai malohi 'a e hopo ko eni 'i fakamaau'anga.

Senalio 3: Ko e vaka 'oku 'ikai ke lesisita mo ha tangata toutai 'oku 'ikai ke lesisita, na'e ma'u 'oku uku mokohunu 'i he SMA 'o 'Utungake.

- Fakamo'oni: Na'e pehe 'e he 'Ofisa Kolo, na'e talaange 'e he ongo le'o na'a na ma'u ha taha 'oku uku mokohunu 'i he 'Elia Tapu 'o 'Utungake pea ne lipooti ki he 'Ofisi Polisi 'i Neiafu. Na'e pehe 'e he 'ofisa le'o, na'e le'o he po ko ia mo hono kaunga le'o, na'a na ma'u e tokotaha toutai 'oku uku mokohunu 'i he 'Elia Tapu, pea ko hono vaka na'e fonu 'i he mokohunu, pea ko e vaka fakataha mo e tangata toutai na'e fakatou 'ave ki he 'Ofisa Kolo. Ko e tangata le'o e taha na'a ne 'omi e fakamatala kehe mei he tangata le'o 'uluaki. Ko e 'Ofisa mei he Toutai, na'a ne tuhu'i mai e feitu'u tonu ne fakahoko ai e hia toutai pea mo fakapapau'i ko e fa'ahinga mokohunu ne toutai'i 'oku lelei hono totongi he maketi. Ko e toenga 'o e ngaahi fakamo'oni, na'e fakahu ia ki he fakamaau. Na'e tu'utu'uni foki mei he fakamaau ke fakahu ange mo e Palani Pule 'a e SMA 'o 'Utungake, pehe ki he mokohunu na'e puke mo ha ngaahi ta ('ata) ke fakamo'oni'aki.

Senalio 4: Tokotaha toutai 'oku 'ikai ke lesisita 'i he 'asi atu 'a e Komiti pea lele ia.

- Ko e tangata toutai na'e 'ilo 'e he 'Ofisa Kolo mo hono hoa, pea na'e lipooti ia ki he kau polisi. Na'e kole 'e he kakai 'o e kolo ke tamate'i 'a e tikite hopo he kuo fakamolemole'i.

Ngaahi pole mo e ngaahi leseni ne ako mei he ngaahi senalio:

- Ko e fakamatala 'o e kau fakamo'oni, 'oku lava pe ke kehekehe;
- 'Oku kei si'isi'i pe 'a e 'ilo fekau'aki mo e ngaahi fatongia 'o e kau le'o 'i he Feitu'u Pule'i Makehe mo e ngaahi me'a 'oku ngofua ke nau fakahoko 'o fakatatau ki he lao;
- Kapau 'oku 'ikai ha fakamo'oni fe'unga ke fakamo'oni'i'aki e ngaue hia, he'ikai 'aonga ia ke 'ave pe ngaue'aki 'i falehopo. 'Oku fiema'u ke malohi e ngaahi fakamo'oni 'oku ma'u (kau ai e vitio mo e ngaahi ta) ke fakapapau'i e ngaue ta'efakalao na'e fakahoko, mo e feitu'u na'e fakahoko ai.

NGAAHI OLA MO E NGAHI FOKOTU'U MEI HE FAKATAHA

Na'e tuku mai 'e Eileen Fonua (Potungaue Toutai) 'a e fakaikiiki 'o e ngaahi ola mo e ngaahi fokotu'u lalahi mei he fakataha ni. Ko e Potungaue Toutai, te ne muimui'i 'a hono fakahoko e ngaahi ngaue ni:

Fakalelei'i 'a e founa pule 'a e kolo (ki he toutai)

- Fakalahi 'a e 'ilo mo e tokanga ki he polokalama Feitu'u Pule'i Makehe ki he kotoa e ngaahi kolo 'i Tonga;
- Fakahoko e ngaahi fakataha fakata'u ki he polokalama Feitu'u Pule'i Makehe;
- Fakamahino'i 'a e ngaahi tu'utu'uni mo e ngaahi palani pule 'a e kolo matatahi (CCMP) ke fakaivia e founa pule 'a e kolo;
- Fakalelei'i 'a e kau mai mo e fengau'aki 'a e ngaahi kolo Feitu'u Pule'i Makehe mo e ngaahi kolo kaunga'api ke fakapapau'i 'oku muimui'i 'enua ngaahi palani pule (CCMP);

- Ke fengau'e'aki vaofi mo longomo'ui 'a e kau 'Ofisa Kolo pea mo e kakai 'o e ngaahi kolo ki hono muimui'i 'enau ngaahi palani pule;
- Ke fengau'e'aki vaofi mo longomo'ui 'a e ngaahi Komiti Pule 'o e Kolo Matatahi (CCMC) pea mo e Potungau'e Toutai ki hono muimui'i 'enau palani pule;
- Faka'ai'ai e ngaahi kolo Feitu'u Pule'i Makehe ke fakahoko ha ngaahi ngaue 'oku 'ikai fu'u fakamole pa'anga 'a ia 'e lelei ki honau Feitu'u Pule'i Makehe mo e 'ataakai 'o 'oseni, 'o hange ko e to 'akau 'i he matafanga mo e polokalama fakama'a kolo;
- 'Oku kei 'i ai e ongo'i 'oku hanga 'e he ngaahi tu'utu'uni SMA 'o fakangatangata e tau'ataina mo e totonu 'a e kakai (ke toutai pe hu ki he ngaahi toutai'anga) 'i he malumalu 'o e Lao Konisitutone.

Fakaivia hono fakahoko mo hono fakamamafa'i 'o e Lao

- Poupou mo faka'ai'ai e ngaahi founga 'e tokoni ke fakasi'isi'i e ngaahi fepakipaki 'i he va 'o e ngaahi kolo Feitu'u Pule'i Makehe mo e ngaahi kolo kaunga'api;
- Fakahoko ha ako ki he ngaahi kolo Feitu'u Pule'i Makehe mo foaki ha ngaahi me'a ngaue ke tokoni ki hono fakamalohia e lao, 'o hange ko e ngaahi vaka le'o mo e me'a ngaue ki hono polisi'i 'a e SMA;
- Fakakau e kau polisi 'i he ngaahi ako ki he ngaahi tu'utu'uni 'o e Feitu'u Pule'i Makehe mo e polokalama ki hono fakamamafa'i 'o e lao;
- Fakalelei'i e ivi ngaue 'a e ngaahi kolo Feitu'u Pule'i Makehe 'i hono tanaki e ngaahi fakamo'oni ki he ngaahi ngaue pe toutai ta'efakalao, ke tokoni ki he ngaahi ngaue 'i he tafa'aki 'a e kau polisi mo e fakamaau'anga;
- Fakapapau'i 'a e ngaahi fiema'u ke toe vakai'i 'a e ngaahi tu'utu'uni Feitu'u Pule'i Makehe ke fenapasi mo ha fa'ahinga liliu 'oku hoko 'i he tu'unga 'o e ngaahi me'a mo'ui 'o tahi mo e anga hono ngaue'aki pe toutai'i;
- Fakamahino'i 'i he ngaahi mape 'a e ngaahi tu'u'anga longitute mo latitude (GPS) 'a e ngatangata'anga 'o e ngaahi Feitu'u Pule'i Makehe mo e 'Elia Tapu;
- Fiema'u ke fakamahino'i pea vakai'i e ngaahi uesia 'o e ngaahi Feitu'u Pule'i Makehe, tautautefito ki he ngaahi kolo kaunga'api mo 'enau ma'u'anga mo'ui.

Poupou'i e ngaahi ma'u'anga mo'ui kehe ke tokoni ki he ma'u'anga pa'anga 'a e kolo mo fakasi'isi'i 'a e toutai 'i he tahi mamaha (ke taki 'a hono fokohono e ngaue ni 'e he Potungau'e Toutai):

- Fokotu'u ha ngaahi ngaue kehe ke tokoni ki he ma'u'anga pa'anga 'a e kakai 'o e kolo mo tokoni ki hono pule'i 'enau Feitu'u Pule'i Makehe, 'o hange ko e ngaahi ngaue fakatakimamata 'oku 'ikai ke uesia ai e 'ataakai: mamata tofua'a, uku 'i he 'Elia Tapu (FHR);
- Fakatotolo'i e ngaahi tu'utu'uni 'oku fiema'u ke fakangofua e ngaahi ngaue fakatakimamata 'oku 'ikai ke ne to'o ha koloa mei 'oseni 'i he 'Elia Tapu pea 'oange mo e totongi;
- Faka'ai'ai e ngoue (hange ko e to kava mo to lo'akau) mo e tauhi e fangamanu;
- Fakalahi e polokalama faama'i 'o e me'a mo'ui 'i 'oseni, tautau tefito ki he faama mokohunu, limu tanga'u mo e vasuva;
- Fakakau mo fokotu'u ha ngaahi founga toutai makehe ki he toutai 'i he tahi loloto;
- Faka'ai'ai e ngaahi founga toutai tukufakaholo 'oku tu'uloa, hange ko e no'o'anga mo e maka feke.

Toe fakaivia e fengau'e'aki 'a e ngaahi kupu fekau'aki (ke fakahoko 'e he ngaahi kupu kotoa):

- Fakalelei'i e fengau'e'aki mo e ngaahi kupu fekau'aki 'i he va 'o e ngaahi Potungau'e 'a e Pule'anga: Toutai, 'Atakai, Feliliuaki 'a e 'Ea, 'Ofisi Lao, Polisi, Takimamata, Koloa faka-e-natula mo e Savea mo e Potungau'e Ngaahi Ngaue Fakalotofonua;
- Fakamahino e fatongia 'o e ngaahi potungau'e 'a e Pule'anga mo e ngaahi poloseki ke 'oua 'e fepaki e ngaahi ngaue 'oku fakahoko;

-
- Kumi ha tokoni fakapa'anga 'e ala foaki hangatonu ki he ngaahi kolo ke pou pou ki he'enua ngaue he polokalama Feitu'u Pule'i Makehe;
 - 'Oku mahu'inga 'aupito e fengaue'aki vaofi 'a e ngaahi kolo, Pule'anga, ngaahi kautaha tokoni fakapa'anga, sosaieti sivile fakalotofonua mo e ngaahi kautaha 'ikai fakapule'anga ke ola lelei 'a e ngaahi Feitu'u Pule'i Makehe. 'E toe leleiangē foki ki he ngaue 'a e ngaahi kolo, kapau 'e fakalahi mo fakalelei'i e fetu'utaki 'a e ngaahi kupu fekau'aki ki he polokalama Feitu'u Pule'i Makehe.

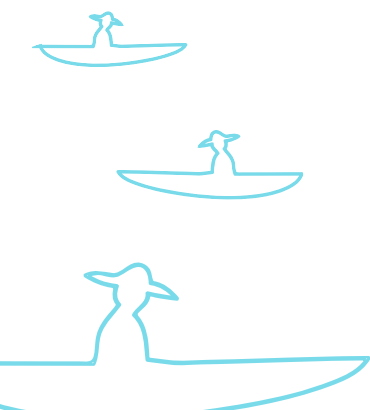
Na'e fakahoko 'e he 'Eiki Minisita Potungaue Toutai ha lea faka'osi ke faka'ilonga'i e ikuna 'a e fakataha ni, 'i he kau mai e ngaahi talanga longomo'ui mo e ngaahi faka'uto'uta 'a e ngaahi kolo Feitu'u Pule'i Makehe mo e kupu fengaue'aki, 'i he ngaahi pole mo e ngaahi founa 'e lava ke solova'aki, koe'uhi ke tokoni ke fakaivia e polokalama Feitu'u Pule'i Makehe. Na'a ne fakamalo ki he kotoa e kau ma'u fakataha mo e kau fokotu'utu'u polokalama, ki he ngaahi ivi ngaue ta'efa'alaua kuo fakahoko he 'aho 'e tolu kakato. 'Oku kei toe lahi e ngaahi ngaue ke fakahoko, ngaahi leseni kuo tau ako, mo hono muimui'i e ngaahi fokotu'u mei he fakataha ni, koe'uhi ke fakapapau'i 'e toe leleiangē e polokalama Feitu'u Pule'i Makehe, mo 'ene tokoni ke pule'i lelei 'a e toutai 'i he matafanga, tu'unga malu 'a e me'atokoni mo e ngaahi ma'u'anga mo'ui 'i Tonga.



Fakalahi 1: 'Asenita 'O E Fakataha

'Aho 1: Tusite, 30 'Epeleli 2019		
POLOKALAMA HUUFU		
08.30	Lotu Kamata	Rev. Pohiva Loto'ahea (Faifekau Pule SUTT, Vava'u)
	Lea Talitali	Dr. Siola'a Malimali (Potungae Toutai)
	Lea Fakaava	Semisi Fakahau, 'Eiki Minisita, Potungae Toutai
	Lea Tapuni	Samiu Vaipulu, Fakaafongua 'a e Kakai - Vava'u 15
	Lotu Tuku	Rev. Pohiva Loto'ahea (Faifekau Pule SUTT, Vava'u)
	Ta Fakakatoa	Media (Potungae Toutai, SPC)
10.00	MA'U ME'ATOKONI PONGIPONGI	
10.30 – 11.00	Fakanofonofo: Vakai Fakalukufua ki he Polokalama SMA, Tu'unga e SMA, Ngaahi Palopalema hono Pule'i e Toutai.	Lea - Siola'a Malimali (MoF)
	Fehu'i & Tali	
11.00 – 11.30	Talanga 1: Ngaahi Lelei mo e Pole hono Fokotu'u e SMA mo e founga ki he kaha'u	Penolo – Taki Polokalama Ngaahi Kolo SMA ('O'ua, Ha'afeva, Taunga, Ovaka, 'Atata, 'Eueiki)
	Fehu'i & Tali	
11.30 – 12.00	Talanga 2: Founga Taki/ Fai Tu'utu'uni mo e founga Tokongaekina e ma'u mafai 'a e pule'anga	Penolo – Taki Polokalama – Dr Vailala Matoto Fakaafongua Fale Alea 'e 3. Potungae Toutai
	Fehu'i & Tali	
12.00 – 12.30	Talanga 3: Ngaahi sitepu ke fakalalakaka'i'aki e ngaue 'a e Polokalama SMA mo e ola 'e ma'u mei ai	Penolo- Taki Polokalama – Salote Koloamatangi Ngaahi Kolo SMA: Ofu, Hunga, Matuku, Kotu, Holonga, 'Utulei)
	Fehu'i & Tali	
1.00 -2.00	MA'U ME'ATOKONI HO'ATA	
2.00 – 2.30	Vahevahe 'o e ngaahi a'usia mo e taukei ki hono pule'i 'e he kolo honau matafanga (A'usia mei Fisi mo Ha'amoia)	Lea - SPC /FLMMA
	Fehu'i & Tali	
2.30-3.30	Ma'u'anga mo'ui tu'uloa mo e Faama Ika 'i he Polokalama SMA	Tataki – Dr Siola'a Malimali
3.30-4.00	MA'U ME'ATOKONI EFIAFI	
4.00-4.30	Talanga 4: Talanga mo e Tokoni, fengau'e'aki mei he ngaahi Potungae felalave'i 'a e Pule'anga	Penolo– Taki Polokalama – Mele Tauati (FAO) Potungae Ngaahi Ngaue liki, Potungae Feliliuaki 'a e 'Ea, Potungae 'Atakai, Potungae Takimamata, 'Ofisi Lao, Potungae Polisi
	Fehu'i & Tali	
4.30 – 5.00	Ngaue ki hono muimui'i fakalao 'o e Polokalama Feitu'u Pule'i Makehe (SMA)	Potungae Toutai – Poasi Ngaluiafe
	Fehu'i & Tali	
5.00 – 5.30	Talanga 5: Talanga 'a e kau fakafongua mei he tokoni faka mei tu'apule'anga mo e kupu fekau'aki ki he ngaue e polokalama SMA 'i he lolotonga mo e kaha'u	Penolo – Taki Polokalama, Kupu Fekau'aki (MORDI, Tonga Health, Italy Environment, WAITT Foundation, Climate Change Civil Society)
7.00 – 9.00	Polokalama Talitali 'o e kau Fakataha – 'Eneio Botanical Gardens	
'AHO 2: Pulelulu 1 Me 2019 – 'A'ahi ki he Feitu'u Pule'i Makehe 'o Ovaka		

'AHO 3: Tu'apulelulu 2 Me 2019		
8.30 – 9.00	'AHO 2: Pulelulu 1 Me 2019 – 'A'ahi ki he Feitu'u Pule'i Makehe 'o Ovaka	Lea – Mele Tauati (FAO)
9.00 – 10.00	Ngaue ki hono muimui'i fakalao 'o e Polokalama Feitu'u Pule'i Makehe (SMA)	Potungae Toutai – Poasi Ngaluiafe
10.00	MA'U ME'ATOKONI PONGIPONGI	
10.30 – 1.00	Ngaue Fakalao ki he SMA	'Eiki Fakamaau Lahi – (Salesi Mafi) Fakafofonga Lao 'a e Toutai (Salote Koloamatangi)
1.00 – 2.00	MA'U ME'ATOKONI HO'ATA	
2.00 – 3.00	Ngaahi senalio fakatefito 'i he ngaahi kolo SMA	'Eiki Fakamaau Lahi – (Salesi Mafi) Fakafofonga Lao Potungae Toutai (Salote Koloamatangi)
3.00 – 3.30	MA'U ME'ATOKONI EFIAFI	
3.30 – 4.00	Fakahoko Lipooti 'o e ngaahi ola mo e ngaahi fokotu'u he fakataha	Eileen Fonua (Potungae Toutai)
4.00 – 4.30	Lea Tuku	'Eiki Minisita Toutai
	Lotu Tuku	Rev. Soiletti Kalavai
	Polokalama Tapuni 'o e Fakataha – Potungae Toutai, Vava'u	



Fakalahi 2: Lea Fakaava 'A E 'Eiki Minisita Toutai, Semisi Fakahau

Tapu mo e Kovana Vava'u, 'Eiki Nopele Fakatulolo mo Hou'eiki neongo 'oku 'ikai ke ne me'a 'i heni 'i he 'aho ni. Tapu mo e fale 'o Ha'a Matapule. Tapu mo e Kau Fakafofonga 'o e Kakai 'i he Fale Alea 'o Tonga mei he Vahenga Vava'u 15, Vahenga Tongatapu 3, pea mo e Vahenga Niua, kuo nau me'a mai ke tau kau fakataha 'i he konifelenisi mahu'inga ni. Tapu mo e kau fakafofonga mei he Kautaha Fakamamani lahi ki he Ngoue mo e Me'atokoni (FAO). Tapu moe kau fakafofonga mei he Kautaha 'a e Ngaahi Fonua 'o e Pasifiki (SPC). Tapu mo e kau fakafofonga mei he ngaahi kautaha mo e hoa ngaue langafakalalaka kotoa pe. Tapu mo e kau taki ngaue mo e kau ngaue mei he ngaahi Kautaha 'Ikai Fakapule'anga kotoa pe. Tapu mo e kau taki ngaue moe kau ngaue fakapule'anga kotoa pe. Tapu mo e kau Pule Fakavahe mo e kau 'Ofisa Kolo mo ha'a tauhi fonua. Tapu mo e Faifekau Pule 'o e Siasi Uēsiliaana Tau'atāina 'o Tonga, 'i he Vahefonua Vava'u, Faifekau Pohiva Loto'ahea, pea mo Ha'a Lotu. Tapu mo kimoutolu kotoa pe 'oku tau lonuku 'i he Holo Maama Mo'onia he 'aho ko eni, pea 'oku 'oatu 'a e kole keu hufanga he talamalu e fonuá mo e lotú kae 'atā ma'ae motu'a ni ke fakakakato hoku fatongia 'o fakatatau moe mape folau 'o e 'aho fakakoloa ko 'eni.

Ko e toutai mamaha, ko e taha ia ha koloa mahu'inga ki he kakai tonga, tautautefito ki he kau toutai iiki he ngaahi kolo, he ko e ma'u'anga pa'anga, ma'u'anga me'atokoni pea 'oku tokoni foki ki he langa fakalalaka 'a e ngaahi kolo. Ko e palopalema 'oku tau fetaulaki mo ia he ngaahi 'aho ni, ko e holo e tu'unga 'o e toutai mamaha. 'Oku ou tui 'oku fakamo'oni kotoa pe ki ai e kau toutai. Kuo toe faingata'a ange toutai, toe mama'o mo fuoloa ange folau toutai, holo e ola e toutai mo e lalahi 'o e ika 'oku ma'u he toutai. Ko e palopalema 'eni 'oku tokanga lahi ki ai 'a e pule'angá, he 'oku felave'i tonu ia mo e ma'u'anga mo'ui mo e ma'u'anga me'atokoni 'a e kakai 'o e fonuá. Ko ia kuo pau ai ki he pule'angá ke kumi ha founa ke lava ke solova ai e palopalema ni.

Koe Feitu'u Pule'i Makehe pe ko e Special Management Area (SMA) ko e halafononga ia ki hono pule'i 'o e toutai mamahá 'i he potutahi 'o Tongá. Kā na'e tali ia 'e he pule'angá pea fakalao'i 'i he ta'u 2002. Ko e hala fononga tatau pe foki ia kuo felotoi ki ai 'a e ngaahi fonua 'o e Pasifiki ke nau ngaue'aki. Ko e polokalama ko 'eni ko hono foaki atu ki he ngaahi kolo mo e kau toutai 'a e mafai fakalao ke nau pule'i 'a e toutai 'i honau konga tahi pule'i makehe taautaha. 'Oku 'i ai 'a e tui te tau lava ke fakahoko lelei 'a e polokalama ni, pea 'e malava ke ma'u mo a'usia e ngaahi taumu'a ngaue 'a e kau toutai mo e ngaahi koló mo e pule'anga fakalukufua foki. Pea 'oku tau tui tatau kotoa pe he fakataha ni, fakatatau ki he fekau 'a e folofolá, ko e ika mo e me'a mo'ui kotoa 'i hotau tahi, ko hotau fatongia ia ke tokanga'i mo pule'i lelei ke kei tu'uloa 'a e ngaahi lelei 'oku tau ma'u mei ai.

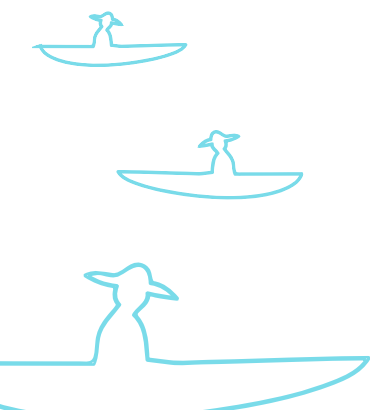
'I he konifelenisi ni, 'oku mahu'inga ke tau tali e fehu'i ko'ení: "Ko e hā 'oku mahu'inga makehe ai 'a e polokalama Feitu'u Pule'i Makehe?" Neongo pe 'oku lahi 'etau ngaahi polokalama ngaue ki he ngaahi kolo taautaha, mo e fiema'u ki he ngaue fakataha ke malu'i hotau tahi, ka ko e polokalama pe 'eni 'e taha 'oku fakapatonu ki he kau toutai iiki mo e kakai 'oku fakafalala 'e nau ma'u'anga mo'ui ki tahi.

Ko ia 'i he 'aho 'e tolu (3) te tau 'i heni ai, 'e lava ke tau ako mo 'ilo lahi ange ki he polokalama Feitu'u Pule'i Makehé mo 'ene fekau'aki mo e ngaahi kupu fekau'aki. Ko ia 'oku ou kole atu ke tau fakakaukau mo talanoa ki ha ngaahi founga ke to e lelei ange ai 'a e polokalama ni mo fakapapu'i 'e ma'u mo a'usia 'a e ngaahi taumu'a ngaue 'a e ngaahi kolo 'oku nau kau ki he polokalama ni. 'Ikai ko ia pē, ka tau sio foki ki ha ngaahi founga 'e to e lele ange ai hono fakaivia e ngaahi koló 'i hono pule'i ko ia honau ngaahi Feitu'u Pule'i Makehé. 'Oku ou tui ko e faingamalie lelei 'eni ke tau fevahevahe'aki 'a e ngaahi 'ilo mo e taukei 'oku tau ma'u ke tokoni ki he polokalama ni mo 'ene taumu'a ngaué. Pea 'e malava ai ke tau hiki hake 'a e ivi ngaue mo e mahu'inga 'o e polokalama ni 'i Tonga.

'Oku ou fie puke 'a e faingamalie ko 'eni ke tuku e fakamālō ki he ngaahi hoa ngaue 'oku nau tokoni mai ke fakahoko e konifelenisi ni, ki he FAO, SPC, MORDI Tonga, Potungaué ki he 'Atakai 'a 'Itali, Waitt Foundation mo e VEPA. 'Oku ou 'oatu foki e fakamālō makehe ki he ngaahi kautaha 'ikai fakapule'anga, hange ko e Sosaieti Sivile 'a Tongá mo e Tonga Health, ngaahi Potungaué 'a e Pule'angá 'i he'etau fengaué'aki lelei fakataha 'i he polokalama Feitu'u Pule'i Makehé.

'Oku ou fakamalo atu he 'omai e faingamalie ko 'eni keu fakahoko atu ai 'a e fatongia ni pea 'oku ou talamonu atu ki ha fakataha lelei te tau fakahoko. Ko ia ai, 'oku ou fokotu'u atu ke fakaava 'o kamata e konifelenisi ni.

Malo 'aupito.
Tu'a 'Ofa 'Eiki Atu.



Appendix 3: Attendance List

Fakalahi 3: Kau Ma'u Fakataha

Island Group/Representation	Motu/Fakaofonga	Total/ Fakakatoa	Male/ Tangata	Female/ Fefine
'Eua (Special Management Area (SMA) coastal community management committee (CCMC))	'Eua (Fakaofonga Komiti SMA)	3	2	1
Tongatapu (SMA CCMC)	Tongatapu (Fakaofonga Komiti SMA)	23	23	-
Ha'apai (SMA CCMC)	Ha'apai (Fakaofonga Komiti SMA)	23	23	-
Vava'u (SMA CCMC s)	Vava'u (Fakaofonga Komiti SMA)	35	34	1
Government/ministerial	Ngaahi Potungau 'a e Pule'anga	38	24	14
Local non-government organizations/ consultants	Kautaha fakalotofonua 'oku 'ikai fakapule'anga/ Kau matatao	11	4	7
Regional organizations	Ngaahi kautaha pe fakaofonga mei ngaahi fonua he Pasifiki	5	3	2
Total		138	113	25

List of all workshop participants

Lisi 'o e kau ma'u fakataha

Name <i>Hingoa</i>	Position/Affiliation <i>Ngaue/Fatongia</i>
Communities	
Mr Sikula Fonua	Chairperson, coastal community management committee (CCMC) of 'Atata
Mr Mosese Taunaholo	Town Officer, 'Atata
Mr Sinipata Muli	Chairperson, CCMC of 'Eueiki
Mr Latu Haieti	Representative from Fafa Island
Mr Tai Langi	Town Officer and Chairperson, CCMC of Kolonga
Mr Saimone Toutai	Town Officer and Chairperson, CCMC of Lapaha
Mr Sitiveni Fe'ao	Town Officer and Chairperson, CCMC of Nukuleka
Mr Tevita Piukana	Town Officer and Chairperson, CCMC of Ha'atafu
Mr Earle Oliver Emberson	Representative, Pangaimotu
Mr Tevita Tuiaki	Town Officer, Holonga
Mr Mateakili'oa Tu'ionuku	Representative, CCMC of Nukunuku
Mr Taniela Takitaki	Town Officer, Manuka
Mr 'Iteni Lotefia	Chairperson, CCMC of Manuka
Mr Metui Taukei'aho	Town Officer of Kanokupolu
Mr Sofilisi Fifita	Chairperson, CCMC of Kanokupolu
Mr Siosifa Lamipeti	Town Officer, Makaunga
Mr Lisiate Teulilo	Town Officer, Tofoa
Mr Sio Tu'iano	Town Officer, Kolomotu'a



Ms Sesimani Lokotui	Representative, Council Committee of Kolomotu'a
Mr Matiu Kaho	Town Officer, Hoi
Mr 'Isime'eli Motu'apuaka	Town Officer, Te'ekiu
Mr Sione Tautulaki	Town Officer, 'Ahau
Mr 'Epeli Finau	Town Officer, Talafo'ou
Mr Kotoni Tu'ineau	Chairperson, CCMC of 'O'ua
Mr Manase Tu'alau	Town officer, 'O'ua
Mr Kisione Taulanga	District Officer, Ha'afeva
Mr Peni Lalakai	Town Officer, Ha'afeva
Mr Sione Finau Fakatou	Chairperson, CCMC of Felemea
Mr Sione Masima	Town Officer, Felemea
Mr Paea Vehikite	Chairperson, CCMC of Nomuka (Kelelesia & Tonumea) Special Management Area
Mr 'Akimeta Tupou	Town Officer, Nomuka
Mr Talite Kafoika	Town Officer and Chairperson, CCMC of Mango
Mr Feleti Faha'ivalu	Town Officer and Chairperson, CCMC of Fonoifua
Mr Koli Tala'aho Fituafe	Town Officer and Chairperson, CCMC of Matuku
Mr Salesi Muli	Town Officer and Chairperson, CCMC of Mo'unga'one
Mr Moala 'Ofa	Town Officer and Chairperson, CCMC of 'Uiha
Mr Lisala Langi	Town Officer and Chairperson, CCMC of Ha'ano
Mr Afuhia Fehoko	Town Officer and Chairperson, CCMC of Fakakai
Mr Ueini Pousima	Town Officer and Chairperson, CCMC of Pukotala
Mr Saia Langi	Town Officer and Chairperson, CCMC of Muihoa
Mr Vaea Tangitau	Town Officer and Chairperson, CCMC of Faleloa
Mr Molitoni Paongo	Town Officer and Chairperson, CCMC of Lofanga
Mr Tevita Sikalu	Town Officer of Tungua
Mr Sitaleki Pahulu	Town Officer, Koulo
Mr 'Inoke Fono	Town Officer, Holopeka
Mr Paula Finau	Town Officer, Hihifo
Ms Nenisi Kava	CCMC Member, Tufuvai
Mr Taniela Fatai	Town Officer and Chairperson, CCMC of Houma
Mr Ma'ake Anitonia Manukia	Town Officer, Futu
Ms Pasimati Vaisima	Town Officer, Ovaka
Mr Ma'afu Mahe	Town Officer, Taunga
Mr Napa'a Halatanu	Town Officer, Hunga
Mr Samiu Seau	Town Officer, 'Utungake
Mr Viliami Malolo	Town Officer, Falevai
Mr Siasia Te'epa'aua	Town Officer, Taliha
Mr Viliami Latu	Town Officer, Útulei
Mr Alaiva'a Moimoi	Town Officer, Ofu
Mr Mina'ati Fifita	Town Officer, Koloa
Mr Uele Moala	Town Officer, Holeva

Mr Ingilisi 'Asitoni	Town Officer, Kapa
Mr Sateki Lea	Chairperson, CCMC of Makave
Mr Taniela Tu'i	Town Officer, Makave
Mr Kefingi Kata	Chairperson, CCMC of Nuapapu
Mr Epifania Kivalu	Town Officer, Nuapapu
Mr Samiu Kaufusi	Chairperson, CCMC of 'Olo'ua
Mr Asaeli Taufalele	Town Officer, Olo'ua
Mr Latu Taufa	Town Officer, Matamaka
Mr Manu-e-toafa Moala	Town Officer, Toula
Mr Olafehi Fainu	Town Officer, Tefisi
Mr Samiu Mahina	Chairperson, CCMC of Tefisi
Mr Nikola Seau	Town Officer, Fungamisi
Mr Simoneti Toko	Town Officer, Falaleu
Mr Kelepi Kiokata	Town Officer, Taa
Mr Tinitale Piukala	Town Officer, Pangaimotu
Mr Ifalemi Palanite	Town Officer, Longomapu
Mr Nasoni Havea Lolohea	Town Officer, Ha'akio
Mr Eukaliti Halaifonua	Town Officer, Houma
Mr Vava Fifita	Town Officer, Neiafu
Mr Ula Kaufusi	District Officer, Neiafu
Mr Paea Uasike	District Officer, Leimatu'a
Mr Tu'ihoua Lautaha	District Officer, Hihifo
Mr Mapa Hafoka	District Officer, Hahake
Mr Tevita Manuofetoa	District Officer, Pangaimotu
Mr 'Ulaiasi Vaisima	District Officer, Motu
Ministry of Fisheries	
Hon Semisi Taelangi Fakahau	Minister for Fisheries
Dr Siola'a Malimali	Deputy Chief Executive Officer (Fisheries Science & Extension Division)
Mr Sione Mailau	Assistant Research Officer
Mr Viliami Fatongiatau	Senior Fisheries Assistant
Ms Eileen Fonua	Principal Fisheries Officer
Ms Amanda Le'ota	Fisheries Officer
Ms Salote Koloamatangi	Legal Officer
Mr Poasi Ngaluafe	Deputy Chief Executive Officer (Fisheries Compliance Division)
Ms Siosi'ani Matangi	Fisheries Trainee
Ms Tilisa Alalea	Fisheries Trainee Receptionist
Ms Sosefina Vili	Technical Officer Grade 2 (Ha'apai)
Mr Sisilia Tu'i'onetoo	Fisheries Officer in Charge of 'Eua
Ms Angelica Mafile'o	Officer In Charge of Vava'u
Ms Akosita Leakona	Computer Assistant
Ms Vetekina Pau'u	Fisheries Science Assistant

Mr Ioane Finau	Technical Officer Grade 2
Mr Viliami 'Ofa	Fisheries Trainee
Mr Manase Fosita	Driver
Mr Metali Henoa	Driver
People's Representatives, Government Ministries and Magistrates	
Mr Sipiliano Tapueluelu	Sergeant (Tongatapu, Central District)
Mr Sisitoutai Tonga	Acting Superintendent (Eastern District)
Mr Kelepi Talamai	Sergeant (Tongatapu, Western District)
Mr Salesi Mafi	Chief Magistrate
Mr Joe Fifita	Assistant Crown Counsel
Ms Katakia Lea'aetoa	Ministry of Internal Affairs
Ms Sulieti Hufanga	Ministry of Environment
Ms Malia 'Avala	Senior Climate Change Technical Officer
Mrs Lu 'isa Fihaki	Ministry of Tourism
Mr Brian Fusimalohi	Representative from SPAM/Environment Department
Hon. Vatau Hui	People's Representative for Niua
Hon. Samiu Vaipulu	People's Representative for Vava'u 15
Hon. Siaosi Sovaleni	People's Representative for Tongatapu 3
Mr Lisiate Peluafaa	Acting Sergeant
Mr Sunia Kouvaka Havea	Government Representative for 'Eua
Mr Paula Tatafu	Magistrate
Mr Simonetti Toko	Magistrate
Mr Taulango Tapueluelu	Acting Superintendent
Mr Talau Fe'aomoeata	Sergeant
Civil society and non-governmental organizations	
Mr Ikenasio Taulangovaka	Mainstreaming of Rural Development Innovation (MORDI)
Mr 'Oliveti Lo'au	MORDI Tonga
Ms 'Amelia Havea	MORDI Tonga
Mrs 'Ofeina Filimoehala	Chief Executive Officer of Tonga Health Promotion Foundation
Ms Vanesa Lolohea	Civil Society Forum
Ms Karen Stone	Vava'u Environmental Protection Association (VEPA)
Ms Sesi Loni	VEPA
Ms Lisa Fania	VEPA
Mr Vaka Lavulavu	VEPA
Regional and international organizations	
Mr Pau Likiliki	Food and Agriculture Organization of the United Nations
Ms Mele Ikatonga Tauati	Food and Agriculture Organization of the United Nations
Mr Kiniviliame Ravonoloa	Fiji Locally Managed Marine Area Network, Community Representative from Fiji
Mr Watisoni Lalavanua	The Pacific Community
Ms Celine Muron	The Pacific Community

Facilitators	
Dr Sione Vailala Matoto	Facilitator
Ms Silika Ngahe	Facilitator



The national workshop provided an important platform for representatives from coastal fishing communities and other key stakeholders to share lessons learned and discuss ways to strengthen Tonga's Special Management Areas (SMAs) programme. This workshop specifically aimed to improve awareness on SMAs, clarify best measures to improve community management, compliance and enforcement procedures, and to develop a wider network of support to the programme. This document provides a summary of proceedings of the workshop that was held on 30 April to 2 May 2019.

Ko e fakataha fakafonua ko eni, na'e hoko ia ko ha fakataha mahu'inga ma'ae kau fakafofonga 'o e ngaahi kolo 'oku tu'u 'i he matafanga mo e ngaahi kupu kehekehe, 'i hono fakahoko ha ngaahi fevahevahe'aki 'o e taukei mo ha ngaahi lesone ke tau ako ke tokoni ki hono fakalalakala 'a e polokalama Feitu'u Pule'i Makehe 'a Tonga. Ko e ngaahi taumu'a 'o e fakataha ni, ke fakalahi 'a e 'ilo ki he polokalama Feitu'u Pule'i Makehe, fakapapau'i ha ngaahi founa ke toe lelei ange hono pule'i fakakolo 'a e toutai, fakalelei'i 'a e ngaahi founa ngaue ki hono fakamamafa'i mo fakahoko 'o e lao, pehe ki hono toe langa'i e ngaahi fetokoni'aki mo e ngaahi fengaue'aki 'a e ngaahi kupu kehekehe ki he polokalama Feitu'u Pule'i Makehe. 'Oku 'oatu 'a e tohi ni 'a e ngaahi fakaikiiki 'o e fakataha ni, 'a ia na'e fakahoko 'i he 'aho 30 'o 'Epeleli ki he 'aho 2 'o Me 2019.



Sweden
Sverige



This publication was produced with the financial support of the European Union and Sweden. Its contents are the sole responsibility of FAO, Tonga Ministry of Fisheries and VEPA, and do not necessarily reflect the views of the European Union and Sweden



VAITT
INSTITUTE

ISBN 978-92-5-133328-0



9 789251 333280

CB1075B/1/10.20