



Source: Global Administrative Unit Layers from Natural Earth with disputed areas.

Better understanding of cropland water demand provides useful guidance for efficient irrigation practices. Potential evapotranspiration can be defined as a proxy of cropland water demand, i.e., the amount of water that can be transferred to the air from land<sup>1</sup>. Potential evapotranspiration was retrieved from MODIS remote sensing imagery and cropland extent from a land cover dataset based on Sentinel-1 and Sentinel-2 data<sup>2,3</sup>. A bivariate map with a hexagon grid (cells of 90 square kilometers) is shown to analyze the water demand and the cropland distribution in the Harirud-Murghab River Basin. This analysis contributes to the Afghanistan Emergency Food Security Project (OSRO/AFG/213/WBK).

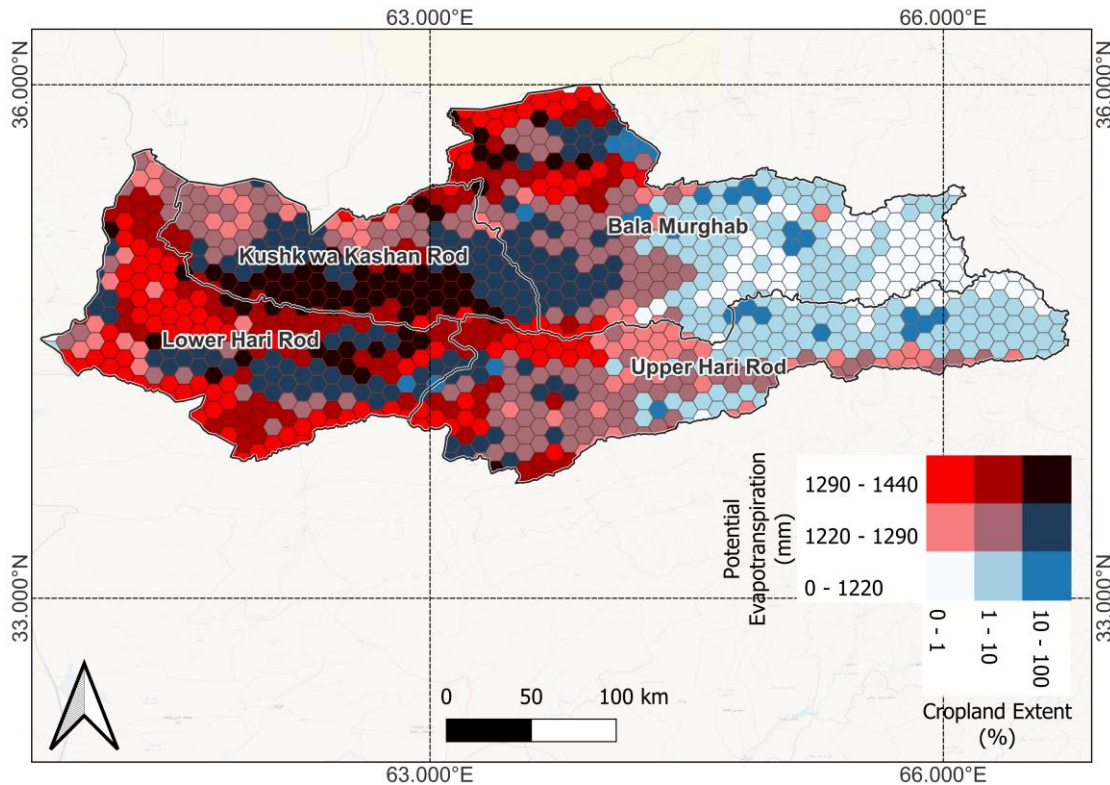


Figure 1: Bivariate map of seasonal cumulative potential evapotranspiration (mm) and cropland land area extent (%) during summer season (05 to 09, 2022) in Harirud-Murghab River Basin.

## Results

Cropland area extent was higher in Kushk wa Kashan Rod, covering 22 percent of the sub-basin area, followed by Lower Hari Rod with 15 percent. The higher cumulative water demand in cropland was found 1303 mm in Lower Hari Rod, followed by Kushk wa Kashan Rod with 1290 mm. The results highlights the importance to maintain irrigation infrastructure and access to water in high water demanding basins (Lower Hari Rod and Kushk wa Kashan Rod) as compared to others.

Table 1: Mean values of seasonal cumulative potential evapotranspiration (mm) and cropland area extent (percentage of the sub-basin area and extent in km<sup>2</sup>) during summer season (05 to 09, 2022) by sub-basins.

Sub-basin	Potential evapotranspiration (mm)	Cropland extent (%)	Cropland extent (km <sup>2</sup> )
Bala Murghab	1226	9	2173
Kushk wa Kashan Rod	1290	22	2924
Upper Hari Rod	1232	5	1070
Lower Hari Rod	1303	15	2709

Prepared by Qiyamud Din Ikram, Dario Spiller, Kaustubh Devale, Sayed Sharif, Hashmatullah Omid, Maziar Karimi, and Matieu Henry for the Afghanistan Emergency Food Security Project. Food and Agriculture Organization of United Nations, Rome, Italy.

<sup>1</sup> Xiang, K., Li, Y., Horton, R., & Feng, H. (2020). Similarity and difference of potential evapotranspiration and reference crop evapotranspiration—a review. *Agricultural Water Management*, 232, 106043. <https://doi.org/10.1016/j.agwat.2020.106043>

<sup>2</sup> Running, S., Mu, Q., Zhao, M. (2017). MOD16A2 MODIS/Terra Net Evapotranspiration 8-Day L4 Global 500m SIN Grid V006. NASA EOSDIS Land Processes DAAC. Accessed 2023-05-26 from <https://doi.org/10.5067/MODIS/MOD16A2.006>

<sup>3</sup> Zanaga, D., Van De Kerchove, R., Daems, D., De Keersmaecker, W., Brockmann, C., Kirches, G., Wevers, J., Cartus, O., Santoro, M., Fritz, S., Lesiv, M., Herold, M., Tsensdazar, N.E., Xu, P., Ramoino, F., Arino, O., 2022. ESA WorldCover 10 m 2021 v2.00.

Disclaimer: The boundaries and names shown, and the designations used on these map(s) do not express any opinion whatsoever on the part of FAO concerning the legal status of any country, territory, city or area or of its authorities, or concerning the delimitation of its frontiers and boundaries. Dashed lines on maps represent approximate border lines for which there may not yet be full agreement. Dotted line represents approximately the Line of Control in Jammu and Kashmir agreed upon by India and Pakistan. The final status of Jammu and Kashmir has not yet been agreed upon by the parties.