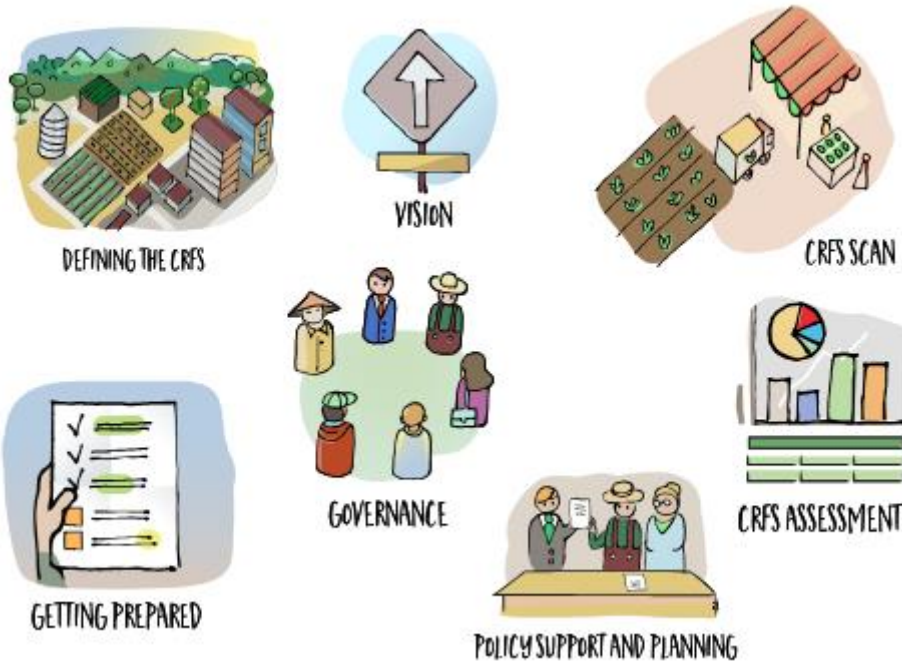




City Region Food System Toolkit
Assessing and planning sustainable city region food systems

CITY REGION FOOD SYSTEM TOOLKIT
TOOL/EXAMPLE



Published by the Food and Agriculture Organization of the United Nations and RUAF Foundation and Wilfrid Laurier University, Centre for Sustainable Food Systems

May 2018

With support from



by decision of the German Bundestag



fondation daniel & nina carasso sous l'égide de la Fondation de France





City Region Food System Toolkit

Assessing and planning sustainable city region food systems

Tool/Example:

SocNetV – Social Network Analysis and Visualization Software – for stakeholders mapping exercise

Author(s): Dimitris V. Kalamaras

Project: n.a

Introduction to the joint programme

This tool is part of the City Region Food Systems (CRFS) toolkit to assess and plan sustainable city region food systems. The toolkit has been developed by FAO, RUAF Foundation and Wilfrid Laurier University with the financial support of the German Federal Ministry of Food and Agriculture and the Daniel and Nina Carasso Foundation.

Link to programme website and toolbox

<http://www.fao.org/in-action/food-for-cities-programme/overview/what-we-do/en/>

<http://www.fao.org/in-action/food-for-cities-programme/toolkit/introduction/en/>

<http://www.ruaf.org/projects/developing-tools-mapping-and-assessing-sustainable-city-region-food-systems-cityfoodtools>

Tool summary:

Brief description	The SocNetV tool allows to draw social networks, analyze graph and social network properties, produce diagrams and layouts. It was used in Kitwe (Zambia) to display the results of the stakeholder identification and analysis exercise.
Expected outcome	Stakeholder mapping display.
Expected Output	Diagram with food system’s stakeholders and interlinks.
Scale of application	City region, regional, national.
Expertise required for application	-
Examples of application	Kitwe (Zambia).
Year of development	-
References	http://www.socnetv.org/

Tool description:

Social Network Visualizer (SocNetV) is a cross-platform, free software application for social network analysis and visualization. SocNetV allows to draw social networks, analyze graph and social network properties, produce diagrams and layouts. This tool can be well combined with a preliminary consultative workshop to identify and characterize the different CRFS stakeholders and their links.

Examples of application

Kitwe (Zambia)

With support from



by decision of the
German Bundestag

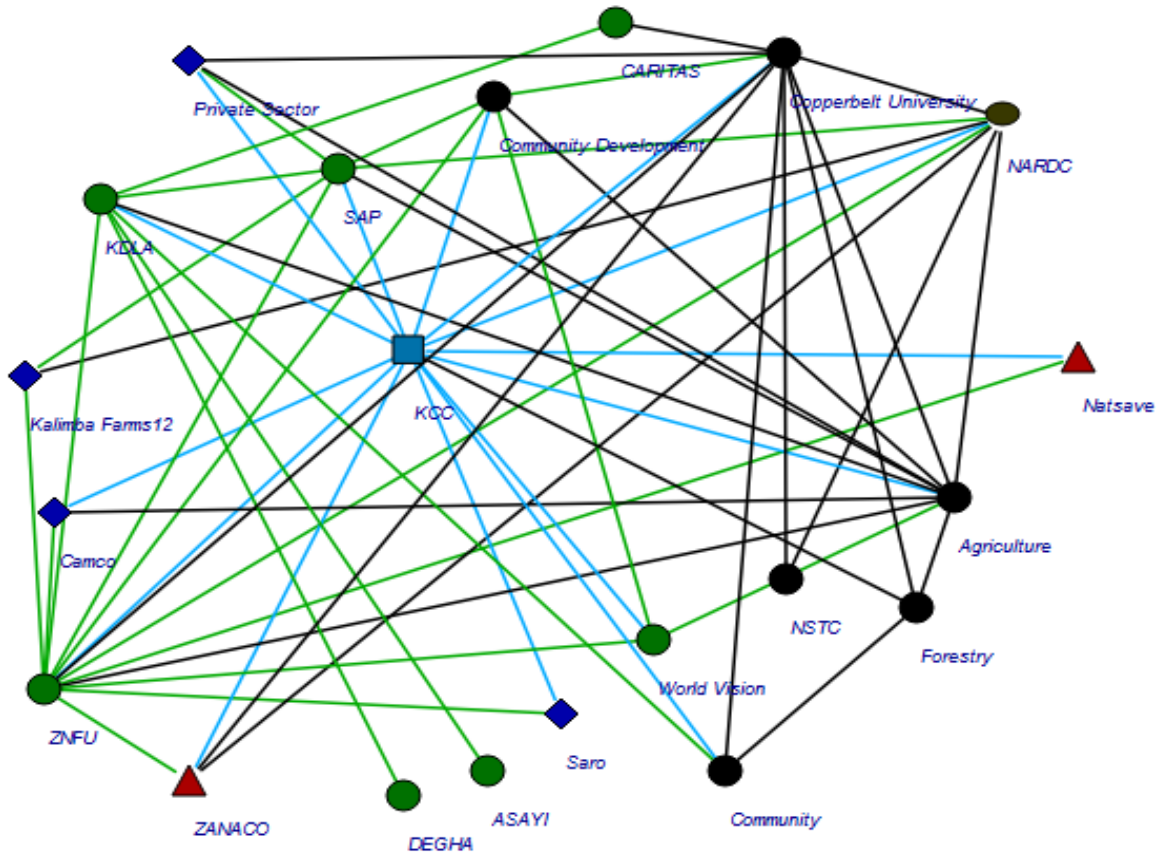


fondation
daniel & nina carasso
sous l'égide de la Fondation de France



City Region Food System Toolkit

Assessing and planning sustainable city region food systems



(Source: Lusaka CRFS Workshop 2015)

CRFS stakeholders network – output of stakeholders mapping exercise on SocNet

Legend: Green circles = civil society organisations; black circles = national government departments; red triangles = financial institutions; blue diamonds = private sector; blue square = Kitwe city council. (KDLA=Kitwe district land alliance; KCC=Kitwe city council; sap=sustainable agriculture programme; NARDC=national agricultural research & development centre; NSTC=national science & technology centre) prepared using SOCVNETV 1.9.

