

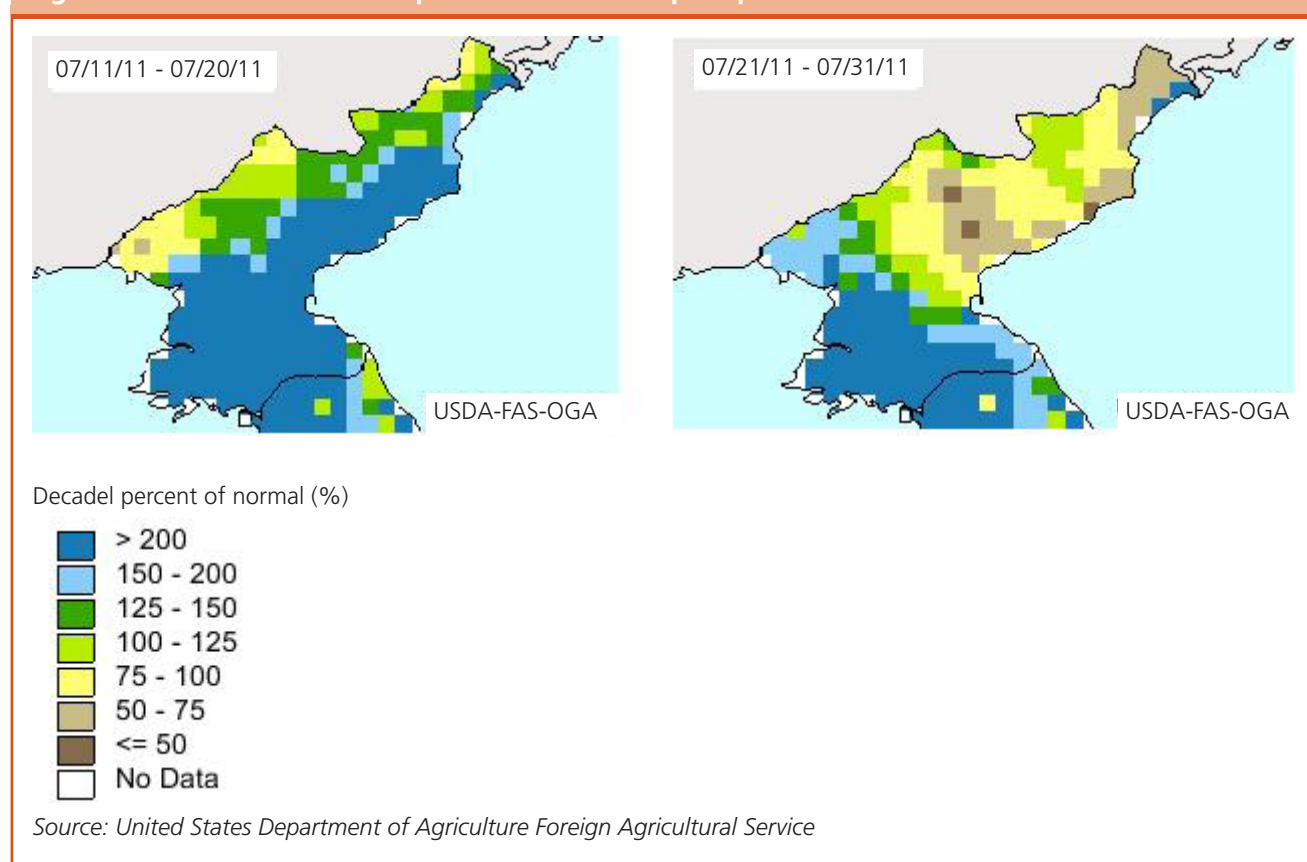
Democratic People's Republic of Korea - Flood Update

8 August 2011

DPRK affected by serious floods following torrential rains in July

The Democratic People's Republic of Korea was hit by excessive rains during the second and third dekad of July (see Figure 1) causing severe flooding and localised crop damage to standing crops of the 2011 main season in the cereal bowl of the country, particularly in the southern provinces. The counties reporting serious damage were Chongdan, Jaeryong, Anak and Unchon in South Hwanghae Province and Hoichang and Pyongwon from South Pyongan Province. Reportedly, some 250 mm rainfall was received during five days in the most affected areas.

Figure 1: AFWA/LIS Decadal percent of normal precipitation



The initial estimates provided by the National Coordinating Committee indicate that 59 340 hectares of cropland have been affected (submerged, buried, washed-away or fell down) nationwide. The total area affected amounts to about five percent of the total area under cereal cultivation (see Table 1). Although no precise crop damage estimates are yet available, the paddy crop, currently at the initial growing stage, is likely to be affected the most in the low lying areas. Damage to agricultural infrastructure was also reported. However, in surrounding areas, the abundant rains are likely to benefit the growing crops. The net effect on total production would need to be assessed later in the season.

Table 1: DPRK - Main-season crop areas in 2010 and the area affected by recent floods (000 ha)

Province	Paddy ¹	Total (cereals and potatoes) ¹	Area affected by floods ²
Pyongyang City	16	27	
South Pyongan	83	156	8.1
North Pyongan	101	205	
Chagang	7	50	
South Hwanghae	146	253	39.7
North Hwanghae	70	168	
Kangwon	34	79	
South Hamgyong	60	124	1.3
North Hamgyong	25	91	0.88
Ryanggang	2	33	
Nampo City	27	38	1
DPRK	570	1 224	59.3*

¹ Source: Ministry of Agriculture as reported in FAO/WFP CFSAM 2010 report.

² Source: National Coordinating Committee for UNDP

* Total including 8 300 ha from Kaesong City.

According to the last FAO/WFP/UNICEF Rapid Food Security Assessment (March 2011) the country is facing over one million tonnes of cereal deficit, or about a quarter of its annual requirements, for 2010/11 marketing year (Nov/Oct). Further details can be found in GIEWS Country Brief at <http://www.fao.org/giews/countrybrief/index.jsp>. So far both, food aid and commercial imports, have been very slow in materializing.

The rainy season typically continues until September. FAO/GIEWS will continue to monitor crop development and weather hazards affecting food security in the region.