

Dynamic Publisher Manual of Features
For use with Dynamic Knowledgebase

DYNAMIC MAPS
DYNAMIC WEB MAPS SERVER
DYNAMIC KNOWLEDGEBASE

TCO CEE Terrestrial Carbon Warehouse Workshop
16-21 November 2002

With the support of:

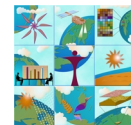


The financial backing of the **Government of the Czech Republic**



The logistical assistance of **COMENIUS**

Comenius



Environment and Natural Resources Service (SDRN)



Dynamic Publisher Manual of Features

Introduction to Dynamic Publisher

Dynamic Publisher is an “extension ” module for Dynamic Knowledgebase that enables you to take atlases developed and published in Dynamic Knowledgebase and package them for distribution and install via CD or DVD. Dynamic Publisher will also:

- Check the client’s computer to ensure the latest version of Dynamic Maps is installed and if not it will install Dynamic Maps and/or the latest Service Pack. Note: if the client computer also has Dynamic Knowledgebase, then a service pack would be installed for it as well.
- Check the client’s computer to ensure that there is enough disk space before unpacking and installing the atlas.
- Enable you to add your own message or link to a web page so that your client will see a message from you and get a better idea of what they are installing and the contents of the atlas.

Dynamic Publisher is provided free of charge with the purchase of Dynamic Knowledgebase.

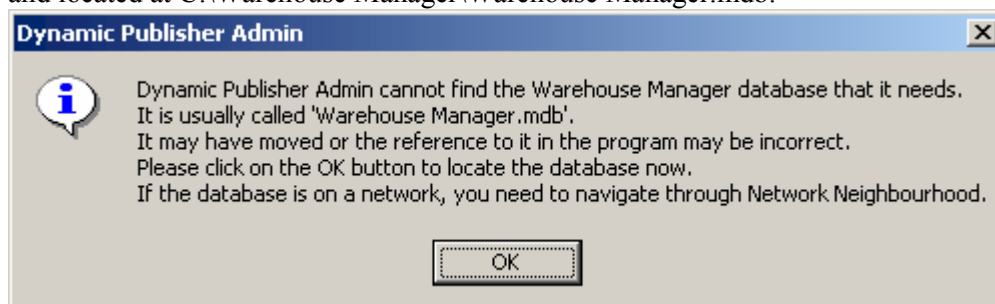
What Does Dynamic Publisher Do?

Dynamic Publisher combines the structured atlas(es) and Dynamic Maps software into a file package that you burn onto a CD/DVD. When a client runs the CD/DVD, Dynamic Maps is installed if necessary, any Service Packs are installed if necessary and the atlas(es) is copied onto the user’s computer and imported as a “Local” warehouse into Dynamic Maps. As a result, when the user launches Dynamic Maps, the atlas(es) is now available.

It is a completely automated way for you to provide your clients with the atlases you produce along with the software to use them.

Starting Dynamic Publisher Admin for the First Time

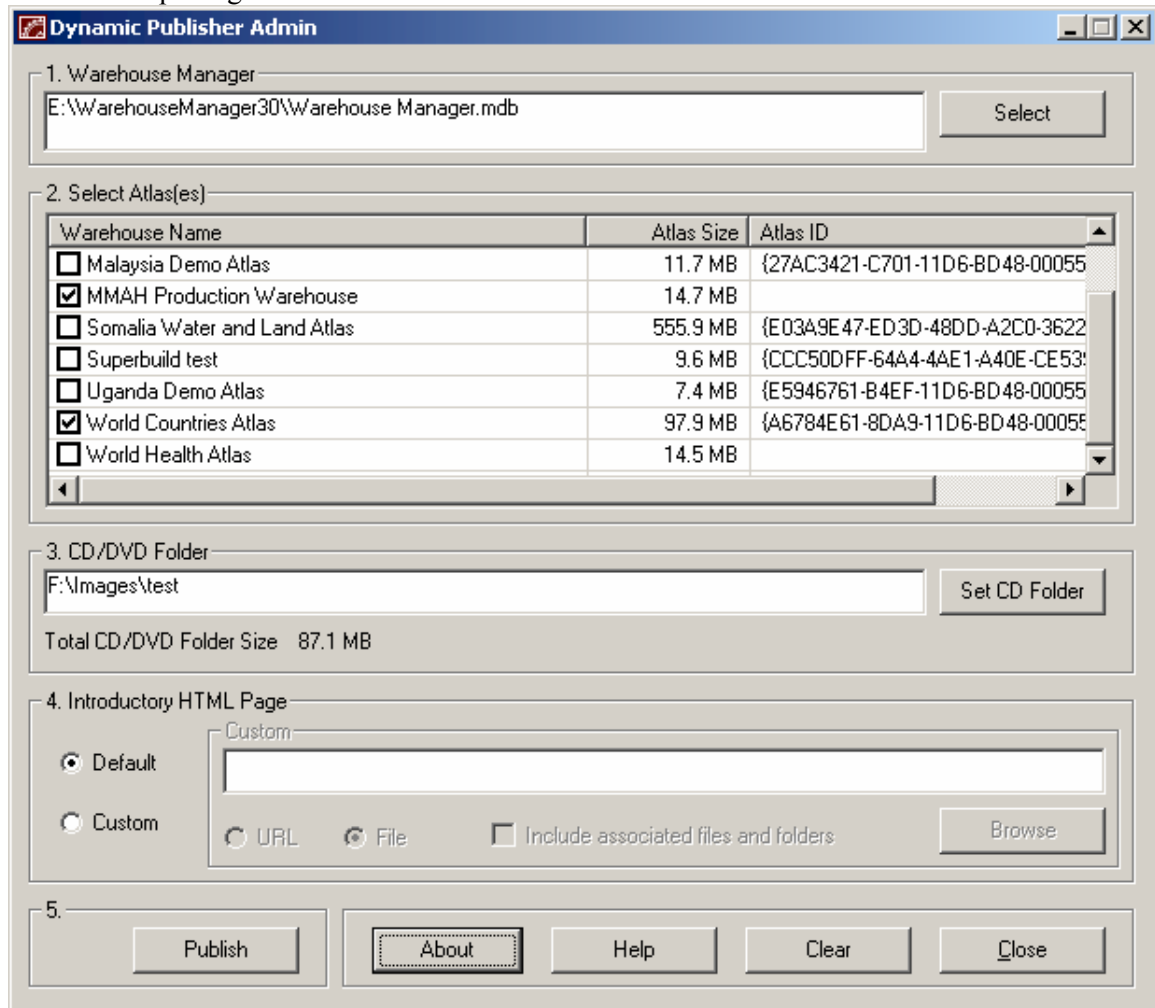
As with Dynamic Maps and Dynamic Knowledgebase, Dynamic Publisher needs to access the Atlases via the Warehouse Manager file. So when it runs for the first time, you need to point it to the Warehouse Manager file, which is typically called “Warehouse Manager.mdb” and located at C:\Warehouse Manager\Warehouse Manager.mdb.



When you connect to the Warehouse Manager, Dynamic Publisher will produce a list of all the warehouses that are available for publishing.

Using Dynamic Publisher

Whenever you create a file package for distribution that contains the atlas(es) you are publishing, by default, Dynamic Maps software and the latest Service Packs are automatically added to the package that is created.



First, select the atlas(es) by clicking on the check box beside the warehouse name.

Second, select the CD Folder that you want the file package created in. You can also create a New Folder to store the files (not under Windows 95 or 98). Note: when you later burn the CD/DVD, all files from inside this folder need to be placed on the CD/DVD, but not the folder itself. If you try and use the same temp folder the system will prompt you delete its contents or pick another folder.

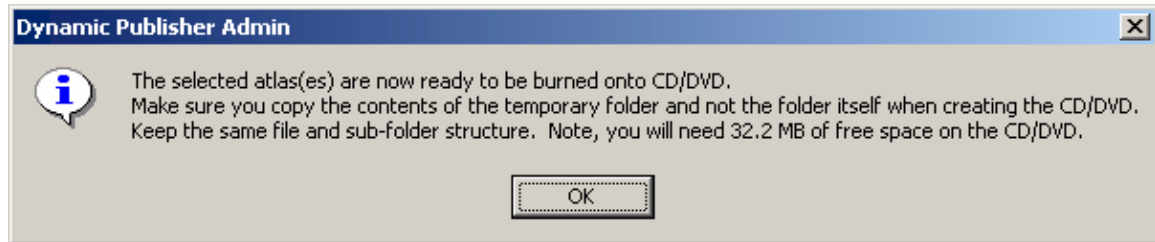
Third, choose the Introductory HTML page that your users will see before the atlas is imported onto their machines. (See “Creating an Introductory HTML Page” below for tips about what the page should say.) For the Introductory HTML page, you have four options:

- a) **Default:** With this setting, a page created by SKE that simply explains to the user what is about to happen is included in the install package.
- b) **Custom:** With Custom you can:
 - a. Choose a URL. This enables you to point the user to a URL of your choice that may contain new information, product and program updates, specific usage instructions, whatever. By doing this online, you have the option of course of changing this page to reflect any changes in the data, your products, or your

programs. Note: that this assumes that the user will be online when they are running the atlas installation.

- b. Choose a File. This enables you to choose an HTML file directly. If you do this, and the HTML file uses other files like graphics, then make sure your file is alone in a directory with the other files and turn on the “Include associated files and folders” option. Click the Browse button to locate and select the file.

Fourth, click “Publish” to create the file package in the folder you specified. The Publish process may take several minutes to complete, depending on the size of the files and the computer. Once the published package is ready, the form will provide a message indicating the size of the file.



Fifth, burn all the files and the complete file structure from the CD Folder onto your CD/DVD for distribution. DO NOT copy the CD Folder itself onto the CD/DVD, i.e., burn only the contents of what’s inside the folder.

Creating an Introductory HTML Page

When creating your own HTML page either locally or on the web, there are several messages you may want to get across to your clients. Some of these are:

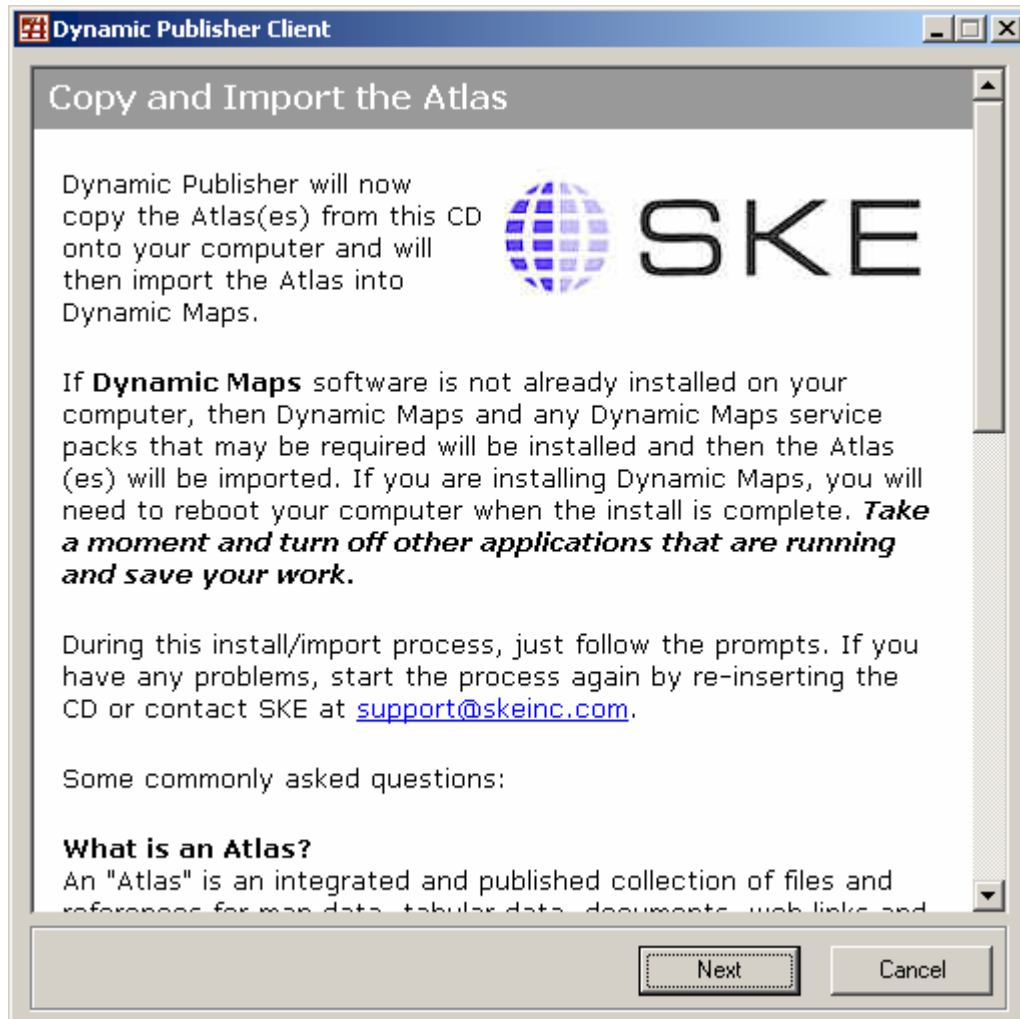
- The name and description of the atlas(es) that is being copied.
- A message that tells the user to turn off Dynamic Maps if it is running.
- A warning that all software should be turned off and work saved prior to installing Dynamic Maps – since the Dynamic Maps install requires the system to reboot.
- A message that reminds users that they must reboot their computer after installing Dynamic Maps.
- A message that indicates where the software manual is located.
- A message that indicates that additional software, data, documentation, and tips are located on the www.skeinc.com web site.

The HTML page can be a page or an entire web site – as long as all the files and links are relative and have been copied from their folder; or, are available online through the URL link you provide.

How the Dynamic Publisher Client Works

The file package that is created and burned onto CD contains a number of components – the atlas(es), Dynamic Maps software, the latest Service Packs, and the manual. When the client inserts the CD/DVD, the autorun sequence will do a few things:

1. Shows the HTML Introductory Page

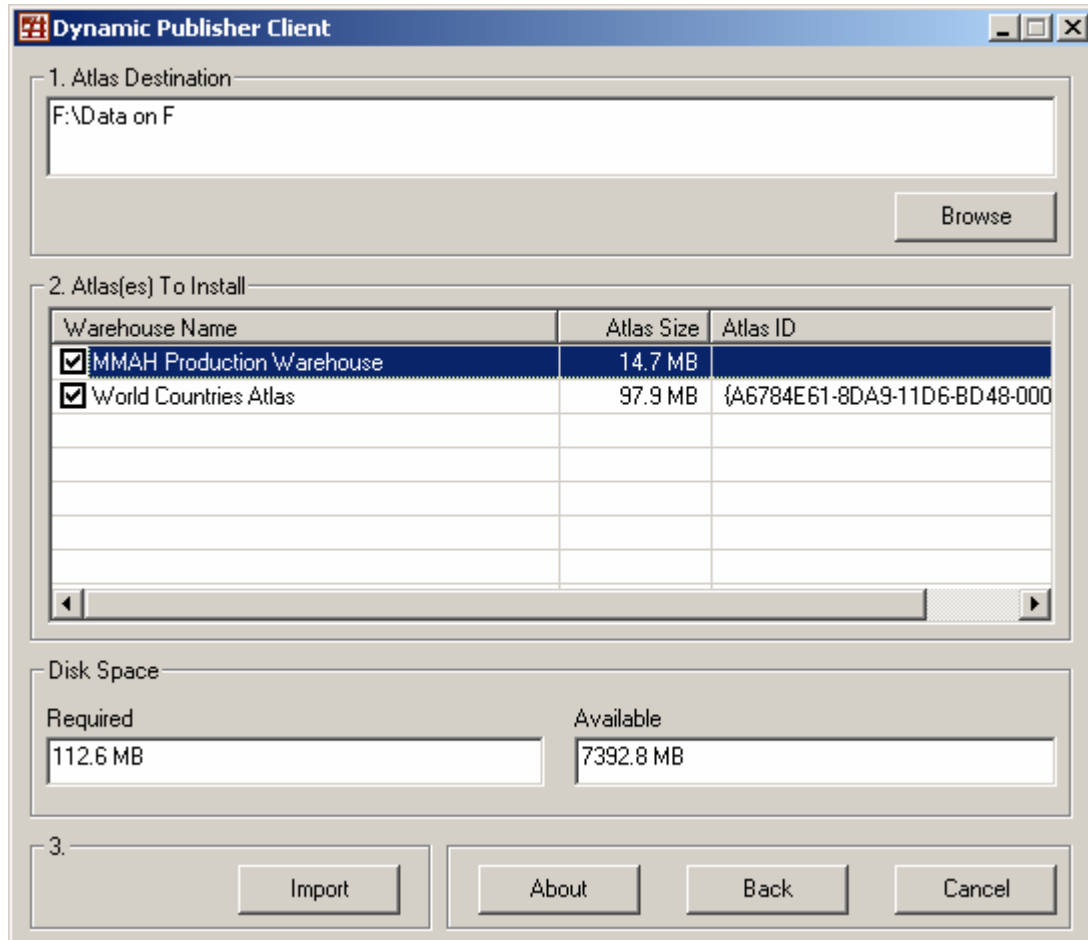


2. Installs Dynamic Maps / Service Pack

If the client does not have Dynamic Maps installed, a message appears saying they need Dynamic Maps installed. The software will install and the latest Service Pack will be applied. Note: The install of Dynamic Maps requires that the user be logged in with Administrator-type privileges. The install of Dynamic Maps will require that the computer reboot. As a result, all other programs should be shut down and any work saved before installing Dynamic Maps. If the client has an earlier version of Dynamic Maps installed, the install will be updated with any relevant service packs.

3. Imports the Atlas

Once the latest version of Dynamic Maps is ready, the software will launch a form (shown below) that enables the user to copy the atlas(es) from the CD/DVD into an "destination" directory on their computer and a checklist of the atlas(es) they want to import. After completing the form and clicking "import", Dynamic Maps will launch with the imported atlas available for use.



Q and A

What if the user is using Dynamic Knowledgebase and doesn't want a "Local" Atlas?

Dynamic Publisher is meant to distribute atlases and Dynamic Maps to users who are not using Dynamic Knowledgebase. Either distribute the atlas through some other means or the user should Delete the Local Atlas registration with Dynamic Maps and then re-import the atlas with Dynamic Knowledgebase.

What happens if the user already has Dynamic Maps installed?

The software will scan the users machine and if Dynamic Maps is installed, only the atlas(es) will be copied and imported. The software will also check to see if the latest service pack is installed, and if not, the service pack will be installed. Remember to tell the user to turn off Dynamic Maps prior to running the CD/DVD.

Can the User Change the Default Location that Dynamic Maps will be installed?

Yes, the Dynamic Maps software install process is a typical install that enables the user to change the location.

Can the location the atlases are put be specified changed by the user?

Yes, during the unpacking process, the user has the opportunity to specify a location for the atlas directories and files to be placed. Once the atlas is imported into Dynamic Maps, the user cannot change the location without needing to re-import the atlas after it has been moved.

How do I create and use an atlas?

Dynamic Knowledgebase is used to create the atlases and manage the warehouses. Dynamic Maps and Dynamic Web Maps Server enable you to access and use the topics in the atlas. Please refer to the software documentation of these products for more information.

What else can I publish with Dynamic Publisher?

Dynamic Publisher publishes atlases and Dynamic Maps software. It is not a generic publishing tool.