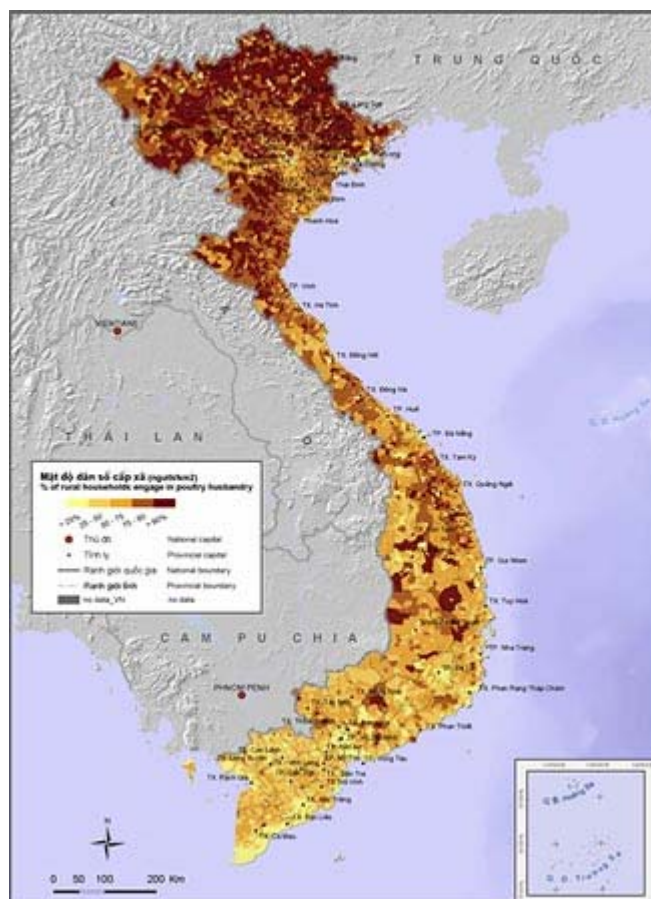




SHARE OF RURAL HOUSEHOLDS ENGAGED IN POULTRY RAISING



Although most rural households in East Asia derive the bulk of their subsistence income from cropping, poultry act as an important source of protein and constitute an investment, which yields extremely high returns.

In Viet Nam, one of the countries most severely affected by HPAI, approximately half of all households, rural and urban, keep chickens. Poultry keeping is particularly prevalent in the northern part of Viet Nam and its more remote, mountainous areas, where more than 90% of households engage in poultry keeping.

Map produced by: M. Epprecht