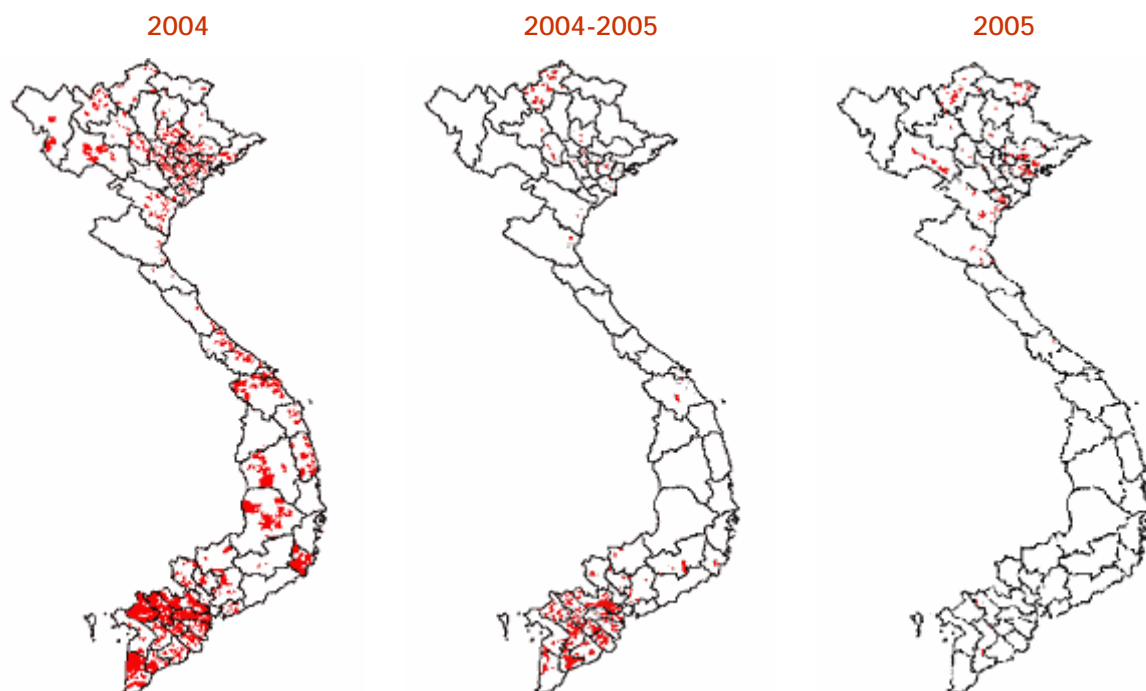




RATIO EPIDEMIC WAVES 2004-2005



The HPAI epidemic has had three distinct epidemic waves, the first in early 2004, the second in late 2004 / early 2005 and the third in late 2005. Onset of the first two waves precedes the Tet holiday by one to one and a half months, probably reflecting increased poultry production and transactions in the wake of the holiday. In both cases the North and the South were heavily affected.

The third, much lower epidemic wave occurred earlier than the previous two and was almost exclusively restricted to the North.

Map produced by: D. Pfeiffer