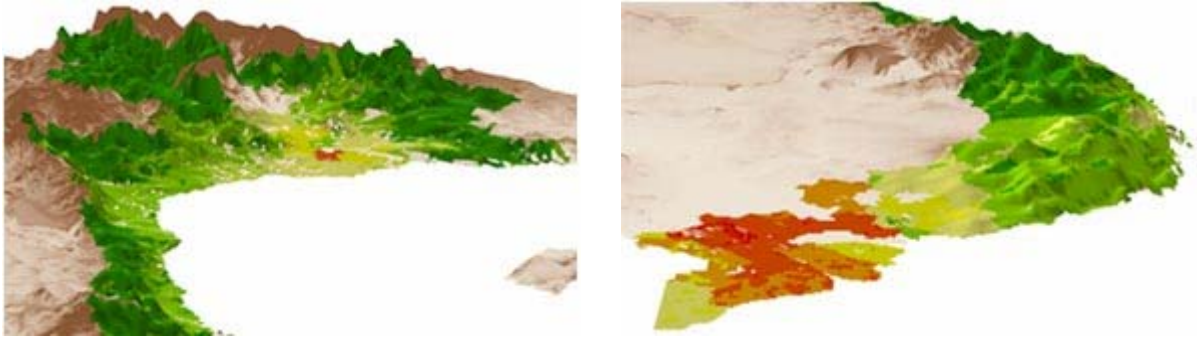




PROBABILITY OF OUTBREAKS IN NORTH & SOUTH VIET NAM,
2004 EPIDEMIC



Analysis of the risk of outbreaks in the epidemic wave of 2004 showed two distinct spatial clusters, one in the North, with a particularly high risk of HPAI in the area around Hanoi, and a second, rather extensive cluster in the Mekong River delta.

Map produced by: D. Pfeiffer