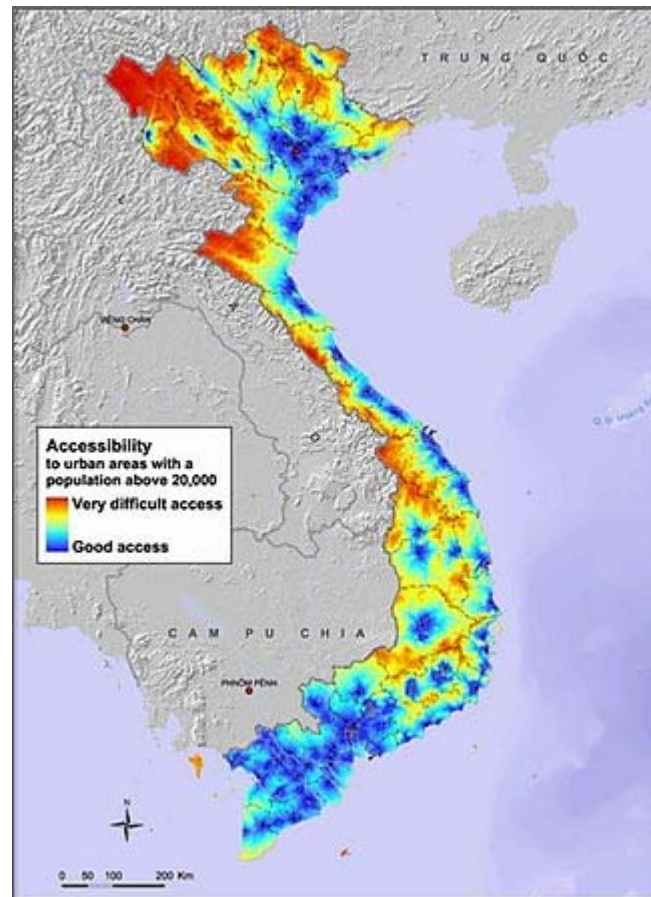




## ACCESSIBILITY



Market transactions are likely to play an important role in the transmission of HPAI between flocks.

The two main risk clusters not only coincide with irrigated areas but also with areas of good market access. This becomes particularly clear in the third epidemic wave, where a number of outbreaks appear to be associated with roads leading into the Northern hinterland.

Map produced by: M. Epprecht