



Pro-Poor Livestock
Policy Initiative (PPLPI)
www.fao.org/ag/ppipi.html

Dept. of Agriculture, Forestry,
and Fishery Statistics General
Statistics Office of Vietnam



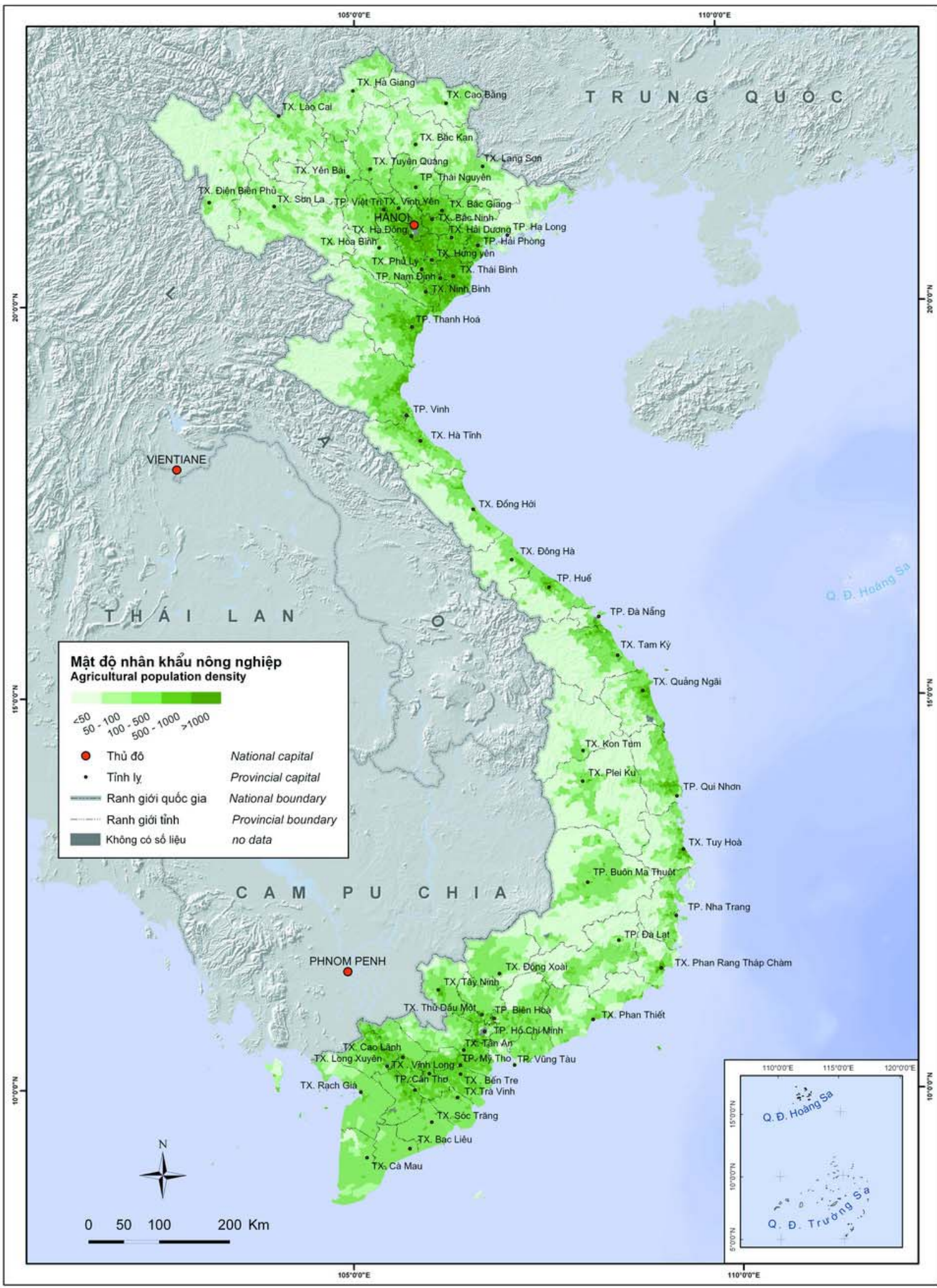
Agricultural Atlas of Viet Nam A Depiction of the 2001 Rural Agriculture and Fisheries Census

Infrastructure and Demography - Agriculture Population

Agricultural Population Density

This map shows the density of people per square kilometre engaged in agricultural production in 2001. The census data show a very high proportion of the total population to be involved in the agriculture sector, with the highest densities (dark green on the map) occurring in the Red River Delta (1,204 people per km² on average) and the Mekong River Delta (430 people per km² on average). The provinces with the highest densities are Thai Binh, Nam Dinh, Ha Nam, Hung Yen, Hai Duong, Hai Phong, Ha Tay, Ha Noi and Bac Ninh.

Conversely, regions with the lowest agricultural population densities are the Northwest (68 people per km² on average) and the Central Highlands (86 people per km² on average), with the mountainous districts of the Northeast and the North Central Coast also having relatively low agricultural population densities. This situation largely reflects that of the total population density ([see Map 1.1.6](#)).



Mật độ nhân khẩu nông nghiệp
Agricultural population density

<math>< 50</math>
 50 - 100
 100 - 500
 500 - 1000
 >1000

● Thủ đô	National capital
● Tỉnh lỵ	Provincial capital
	National boundary
	Provincial boundary
	no data

