

LIVESTOCK SECTOR BRIEF

ANGOLA

Food and Agriculture Organization
of the United Nations **FAO**

Livestock Information, Sector Analysis
and Policy Branch **AGAL**



February 2005

TABLE OF CONTENTS

Preface	ii
1. General Information.....	1
Human population, land and socio-economics	1
Human population trends	2
Trends in agricultural land	2
2. Livestock Resources.....	2
Livestock populations	2
Contribution of different species to total livestock units	3
Selected indicators of livestock resources	3
Agro-ecological zones and densities of livestock species (2000)	4
3. Livestock Production	6
Trends in annual production of meat, milk and eggs	6
Composition of total meat production	6
Carcass weights and percentage slaughtered by species.....	7
Milk yields and proportion of dairy animals.....	7
Egg yields and proportion of laying birds.....	7
Estimated feed used for livestock production	8
Trends in annual per capita production of meat, milk and eggs.....	8
4. Consumption of Meat, Milk and Eggs	9
Trends in annual consumption of meat, milk and eggs	9
Trends in annual per capita consumption of meat, milk and eggs.....	9
Production versus consumption for meat, milk and eggs (2002).....	10
5. Trade in Livestock and Livestock Products.....	11
Trade in agricultural and livestock products.....	11
Export/import 'dependency' for livestock products	11
Trade in live animals	12
Trade in livestock products	13
6. Livestock Health	14
Total number of cases/outbreaks of selected diseases reported in all susceptible species	14
7. References and Further Reading.....	15

Data contained in this Livestock Sector Brief are taken from official sources. Official sources are no guarantee for data accuracy and the figures reported in this brief should be taken as indicative and not be used for official purposes. The Food and Agriculture Organization of the United Nations assumes no responsibility for its accuracy, completeness and coherence.

PREFACE

The Livestock Sector Briefs (LSB) are intended to provide a quick overview and an approximate outlook for the livestock sector of the respective country using figures and quantitative indicators originating from official sources. The LSBs are complemented by a synthesis of policy documents available in the public domain.

The majority of the data in the LSBs refer to the country as a whole and come from FAOSTAT, which is available on the internet (<http://faostat.external.fao.org/default.jsp>). FAO, as part of its mandate, compiles information and data on various aspects of food and agriculture from all countries. The data are analysed and interpreted to support FAO's programmes and activities and, in accordance with the basic functions of the Organization, they are disseminated to the public through publications, CD-ROM, diskettes and the Internet. The country level data are officially submitted to the Division for Statistics of FAO (ESS) by various ministries of the respective countries. For details of data collection procedures see <http://faostat.fao.org/abcdq/about.htm>. The figures submitted often display inconsistencies across ministries, for example reported meat production does not always match reported meat consumption when taking into account imports and exports. FAO tries to reconcile the figures, to the effect that FAO statistics may differ from those originally submitted.

The LSBs utilise FAOSTAT data from the following domains: human population, land use, agriculture production, food supply and agricultural and food trade. These are used to derive a standard set of indicators that can quickly be compared across the countries.

Other data used in the LSB are elaborated from FAO Projections used for the FAO publication 'World agriculture towards 2002/2030'. Data on the economy are from the World Bank's World Development Indicators CD-Rom, which is also available online <http://www.worldbank.org/data/> and is updated every year. Animal health data are taken from the Office International des Epizooties (OIE) HANDISTATUS II <http://www.oie.int/hs2/>. These are official data supplied by member nations.

For any feedback and comment, please contact:

Gianluca Franceschini
Livestock Information, Sector Analysis and Policy Branch
Animal Production and Health Division
Food and Agricultural Organisation
Viale delle Terme di Caracalla
00100 Rome, Italy

Tel: 00 39 06 57054463
Fax: 00 39 06 57055749
Email: Gianluca.Franceschini@fao.org

1. GENERAL INFORMATION

Human population, land and socio-economics

Human population	13.2 million
Population density on total land	10.6 persons/sqkm
Annual growth rate (1990-2000)	2.9 %
Population in agriculture	9.4 million
As proportion of total population	71.3 %
Total land area	1,246,700 sqkm
Agricultural land	573,000 sqkm
As proportion of total land	46.0 %
Land under pasture	540,000 sqkm
As proportion of agricultural land	94.2 %
Irrigated area	800 ha
Agricultural land per 100 people	435 ha
Agricultural land per 100 people in agriculture	610 ha
Agricultural population on agricultural land	16.4 persons/sqkm
GDP ¹	8,181 million US\$
GDP annual growth rate (1990-2000)	3.4 %
GDP per capita/year ¹	623 US\$
GDP per capita annual growth rate (1990-2000)	0.6 %
Agriculture, GDP	704 million US\$
As proportion of total GDP	8.6 %
Livestock, GDP ¹	221 million US\$
As proportion of agricultural GDP	31.4 %
Human development Rank	166 Ranking ²
Human development index	0.381
Poverty incidence ³	
Total	na %
Urban	na %
Rural	na %

¹Constant 1995 US\$ ²The HDI rank is determined using HDI values to the fifth decimal point – from 177 countries, as compiled by the UNDP; ³National poverty line; na: not available

Source: World Bank (2002); UNDP (2004); FAO (2005a)

Human population trends

Values expressed in 1,000

Population segment	Year				Annual growth rate (%)	
	1980	1990	2000	2002	1980-1990	1990-2000
Total	7,048	9,340	12,386	13,184	2.9	2.9
Rural	5,639	6,899	8,251	8,591	2.0	1.8
Urban	1,409	2,441	4,135	4,593	5.6	5.4

Source: FAO (2005a)

Trends in agricultural¹ land

Values expressed in sqkm

Land type	Year				Annual growth rate (%)	
	1980	1990	2000	2002	1980-1990	1990-2000
Total	574,000	574,040	573,000	573,000	0.0	0.0
Cropped ²	34,000	34,000	33,000	33,000	0.0	-0.3
Pastures	540,000	540,040	540,000	540,000	0.0	0.0

¹The sum of area under arable land, permanent crops and permanent pastures

²Arable and permanent crops

Source: FAO (2005a)

2. LIVESTOCK RESOURCES

Livestock populations

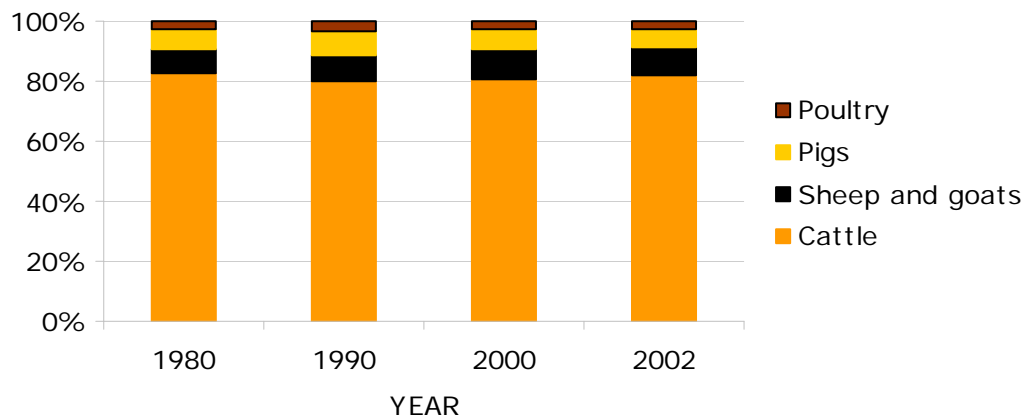
Values expressed in 1,000

Species	Year				Annual growth rate (%)	
	1980	1990	2000	2002	1980-1990	1990-2000
Cattle	3,100	3,100	4,042	4,150	0.0	2.7
Sheep and goats	1,495	1,740	2,500	2,390	1.5	3.7
Pigs	600	800	800	780	2.9	0.0
Poultry	5,400	6,100	6,800	6,800	1.2	1.1
Total LUs	1,874	1,945	2,499	2,538	0.4	2.5

LU: *Livestock unit*; **conversion factors:** cattle (0.50), sheep and goats (0.10), pigs (0.20) and poultry (0.01)

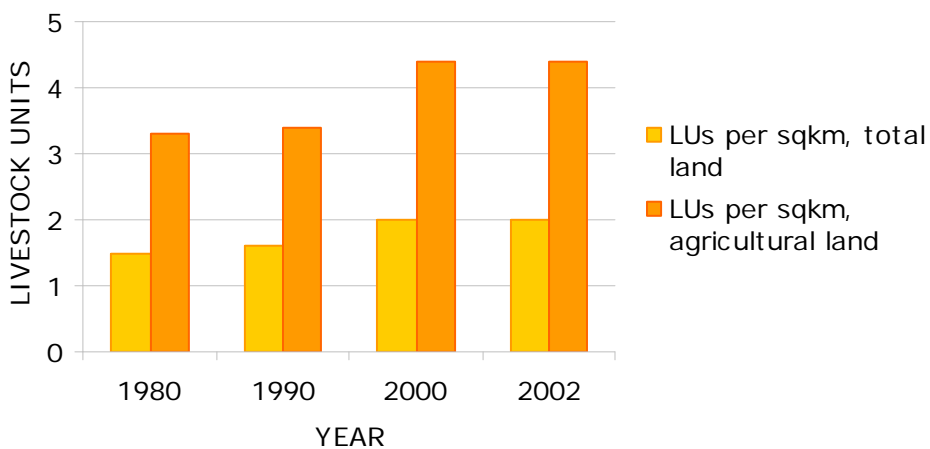
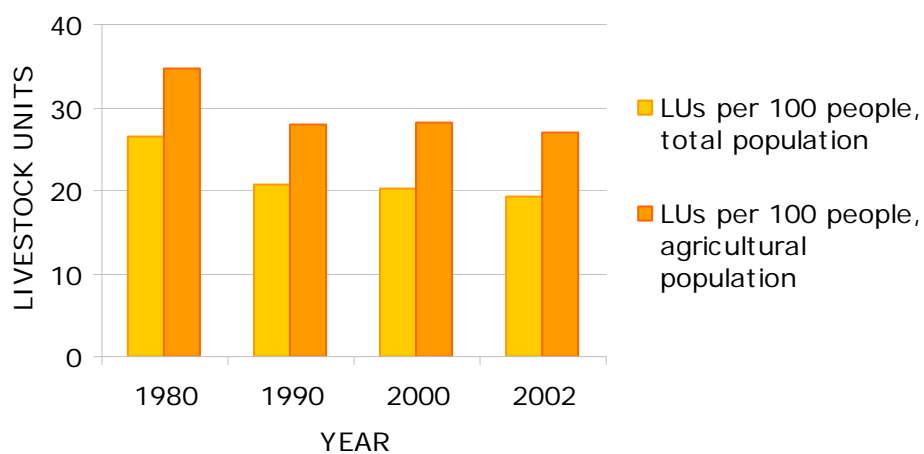
Source: FAO (2005a)

Contribution of different species to total livestock units



Source: FAO (2005a)

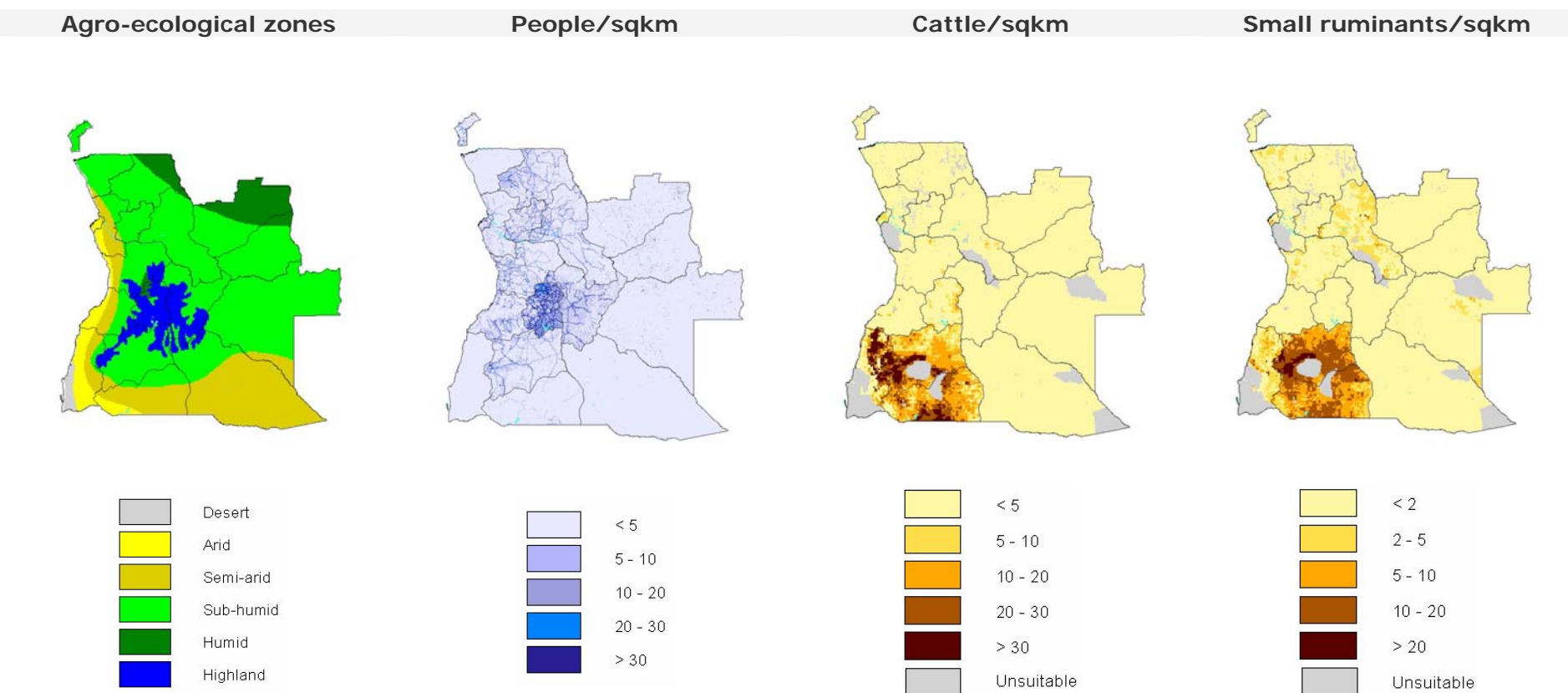
Selected indicators of livestock resources



Source: FAO (2005a)

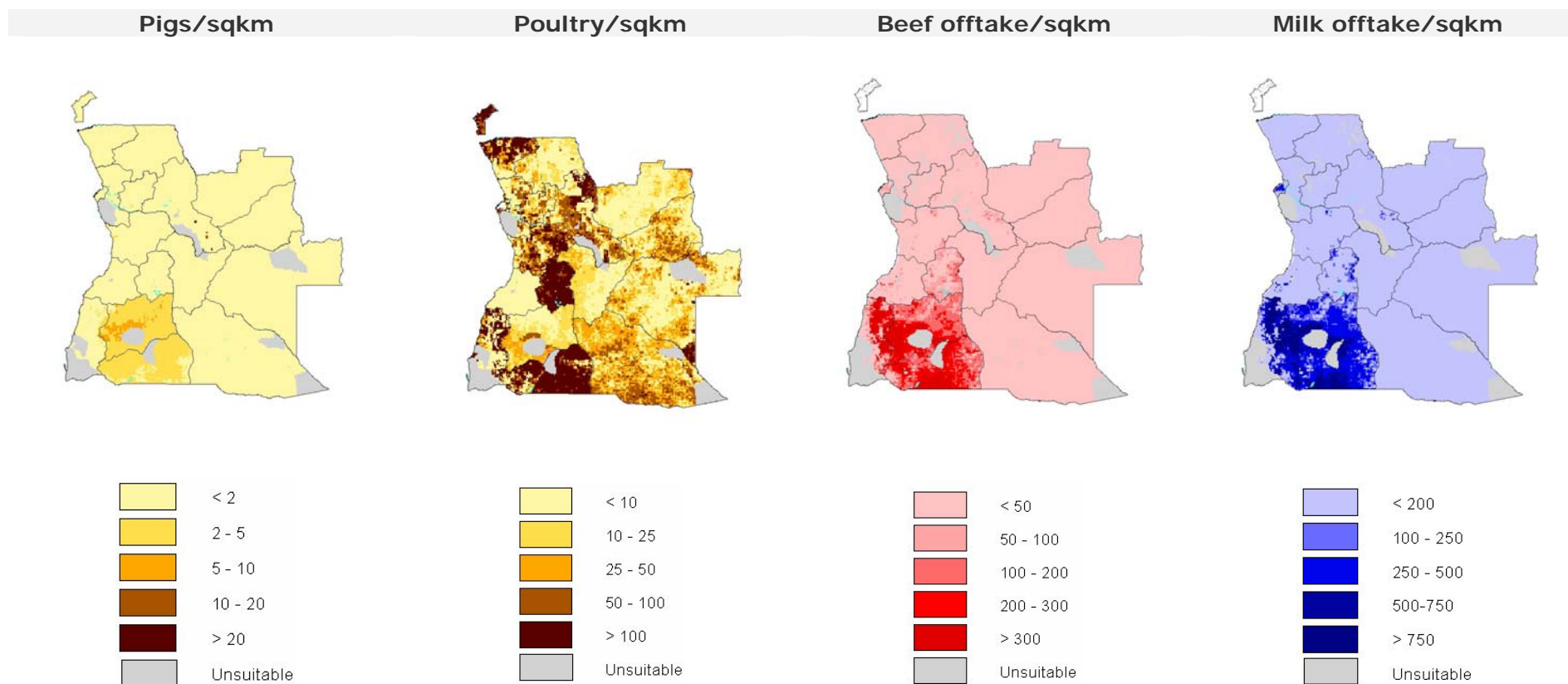
Agro-ecological zones and densities of livestock species (2000)

Density calculated on total land area¹



¹Densities for livestock populations and production are based on total land suitable for livestock production

Source: FAO (2001); LandScan (2002), FAO (2005b)



Source: FAO (2005b); FAO (2003)

3. LIVESTOCK PRODUCTION

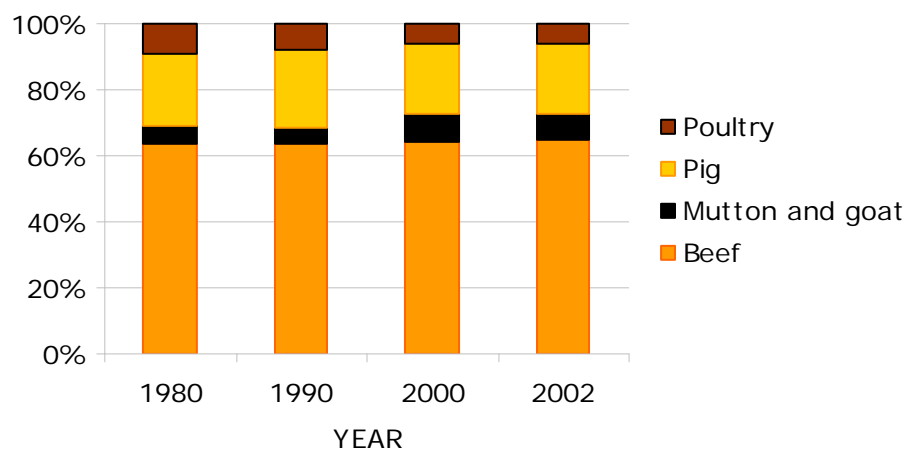
Trends in annual production of meat, milk and eggs

1,000 metric tonnes

Product	Year				Annual growth rate (%)	
	1980	1990	2000	2002	1980-1990	1990-2000
Meat, total	81.1	98.7	139.8	138.6	2.0	3.5
Beef	48	59	85	85	2.1	3.7
Mutton and goat	3.9	4.6	11	10.5	1.6	9.1
Pig	16.5	22	28.6	27.9	2.9	2.7
Poultry	6.7	7.1	7.7	7.7	0.6	0.9
Milk, total	155	150	195	195	-0.3	2.7
Eggs, total	3.6	3.9	4.3	4.3	0.7	1.0

Source: FAO (2005a)

Composition of total meat production



Source: FAO (2005a)

Carcass weights and percentage slaughtered by species

Species/year	Carcass weight (kg/animal)				Percentage slaughtered/year			
	1980	1990	2000	2002	1980	1990	2000	2002
Cattle	150.9	147.5	176.7	170.7	10.3	12.9	11.9	12.0
Sheep	10.0	10.0	15.0	15.0	22.9	22.9	24.3	24.7
Goat	9.0	9.0	15.0	15.0	29.9	30.0	30.0	30.0
Pigs	50.0	50.0	65.0	65.0	55.0	55.0	55.0	55.0
Poultry	0.9	0.9	0.9	0.9	138.0	129.5	126.5	126.5

Source: FAO (2005a)

Milk yields and proportion of dairy animals

Species/year	Milk yield (kg/year)				Percentage milked			
	1980	1990	2000	2002	1980	1990	2000	2002
Cattle	500	484	483	483	10.0	10.0	10.0	9.7

Source: FAO (2005a)

Egg yields and proportion of laying birds

Species/year	Eggs (kg/year)				Percentage laying			
	1980	1990	2000	2002	1980	1990	2000	2002
Chicken	2.0	2.0	2.0	2.0	33.8	32.0	31.6	31.6

Source: FAO (2005a)

Estimated feed used for livestock production

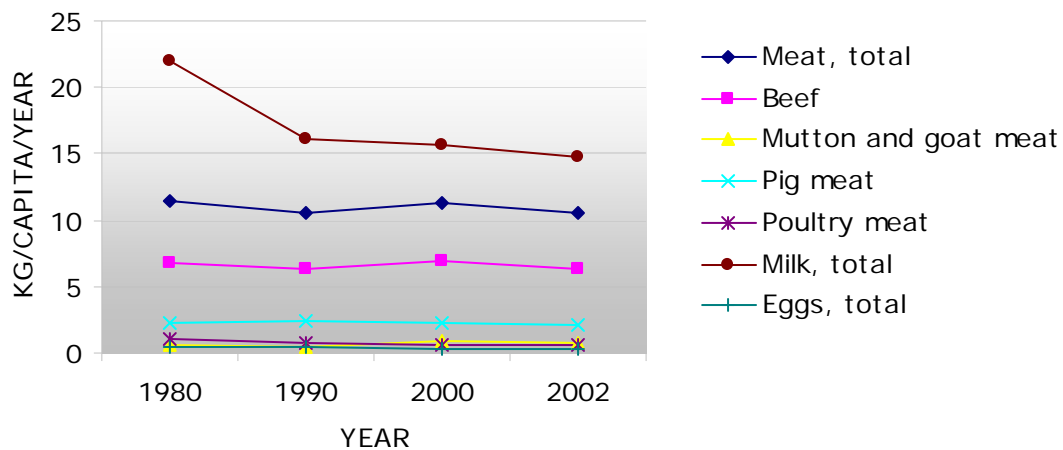
1,000 metric tonnes

Product	Year				Annual growth rate (%)	
	1980	1990	2000	2002	1980-1990	1990-2000
Maize	15.1	8.6	15.3	17.1	-5.5	5.9
Barley						
Sorghum	0	0	0	0.3		
Millet						
Wheat						
Brans	29.2	21.3	27.5	30.2	-3.1	2.6
Rice Paddy, equivalent						
Roots and Tuber, dry equivalent	10.4	14.4	381.1	384	3.3	38.8
Pulses						
Oil crops						

Blanks represent no data

Source: FAO (2005a)

Trends in annual per capita production of meat, milk and eggs



Source: FAO (2005a)

4. CONSUMPTION OF MEAT, MILK AND EGGS

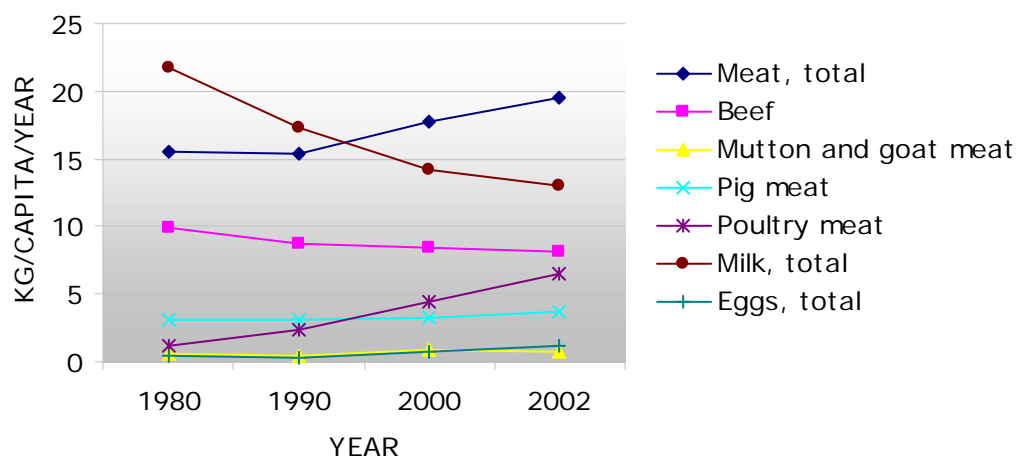
Trends in annual consumption of meat, milk and eggs

1,000 metric tonnes

Product	Year				Annual growth rate (%)	
	1980	1990	2000	2002	1980-1990	1990-2000
Meat, total	110.1	143.9	219.1	257.5	2.7	4.3
Beef	69.7	81.1	105.2	106.3	1.5	2.6
Sheep and goat	3.9	5.0	11.0	10.6	2.5	8.2
Pig	21.8	29.1	40.4	47.5	2.9	3.3
Poultry	8.7	22.8	55.0	85.6	10.1	9.2
Milk, total	153.4	161.4	176.2	171.1	0.5	0.9
Eggs, total	2.9	3.2	9.1	15.6	0.9	11.0

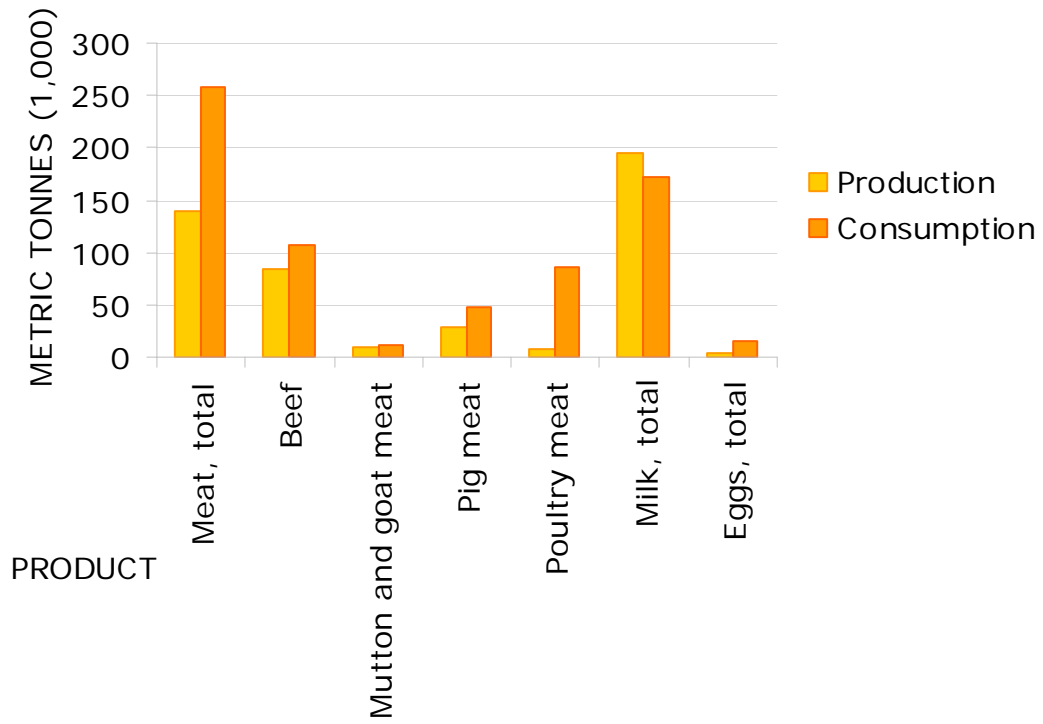
Source: FAO (2005a)

Trends in annual per capita consumption of meat, milk and eggs



Source: FAO (2005a)

Production versus consumption for meat, milk and eggs (2002)



Source: FAO (2005a)

5. TRADE IN LIVESTOCK AND LIVESTOCK PRODUCTS

Trade in agricultural and livestock products¹

Values in million US\$

Product	Exports				Imports			
	1980	1990	2000	2002	1980	1990	2000	2002
Total			2,580	1,515			2,615	2,043
Agricultural	0.0	12.0	11.6	102.1	0.0	93.4	177.5	252.2
% agricultural			0.4	6.7			6.8	12.3
Livestock	0.0	1.2	10.1	11.4	0.0	30.9	69.2	62.3
% livestock			0.4	0.8			2.6	3.0

Blanks represent no data

¹Total trade in goods and services expressed in current US\$. Source: World Bank (2002)
Agricultural trade refers to all agricultural products, while livestock trade refers to trade in livestock products and live animals. Source: FAO (2005b)

Export/import 'dependency' for livestock products

Product	Exports as percentage of production				Imports as percentage of consumption			
	1980	1990	2000	2002	1980	1990	2000	2002
Meat, total	0.00	0.00	0.00	0.00	24.81	29.61	34.34	43.16
Beef	0.00	0.00	0.00	0.00	30.56	25.91	17.96	17.97
Sheep and goat	0.00	0.00	0.00	0.00	0.00	8.37	0.54	1.33
Pig	0.00	0.00	0.00	0.00	16.46	17.46	21.17	28.87
Poultry	0.00	0.00	0.00	0.00	22.98	68.76	85.94	90.96
Milk, equivalent	0.00	0.00	0.00	0.00	82.55	102.98	11.31	10.87
Eggs, total	0.00	0.00	0.00	0.00	8.87	10.95	72.41	87.98

Source: FAO (2005a)

Product	Net exports as percentage of production				Net imports as percentage of consumption			
	1980	1990	2000	2002	1980	1990	2000	2002
Meat, total	0.00	0.00	0.00	0.00	24.81	29.61	34.34	43.16
Beef	0.00	0.00	0.00	0.00	30.56	25.91	17.96	17.97
Sheep and goat	0.00	0.00	0.00	0.00	0.00	8.37	0.54	1.33
Pig	0.00	0.00	0.00	0.00	16.46	17.46	21.17	28.87
Poultry	0.00	0.00	0.00	0.00	22.98	68.76	85.94	90.96
Milk, equivalent	0.00	0.00	0.00	0.00	82.55	102.98	11.31	10.87
Eggs, total	0.00	0.00	0.00	0.00	8.87	10.95	72.41	87.98

Source: FAO (2005a)

Trade in live animals

Species	1980			1990			2000			2002		
	Export	Import	Net trade	Export	Import	Net trade	Export	Import	Net trade	Export	Import	Net trade
Quantities (count)												
Cattle	0	8,000	-8,000	0	0	0	0	0	0	174	89	85
Sheep and goats	0	0	0	0	0	0	0	0	0	2	22	-20
Pigs		0	0		0	0		0	0		4	-4
Poultry (1,000)	0	90	-90	0	90	-90	0	180	-180	0	236	-236
Value (1,000 US\$)												
Cattle	0	3,600	-3,600	0	0	0	0	0	0	46	100	-54
Sheep and goats	0	0	0	0	0	0	0	0	0	0	2	-2
Pigs		0	0		0	0		0	0		2	-2
Poultry (1,000)	0	125	-125	0	130	-130	0	220	-220	0	172	-172
Total	0	3,725	-3,725	0	130	-130	0	220	-220	46	276	-230

Net trade: Exports less Imports

Blanks represent no data

Source: FAO (2005a)

Trade in livestock products

Product	1980			1990			2000			2002		
	Export	Import	Net trade	Export	Import	Net trade	Export	Import	Net trade	Export	Import	Net trade
Quantities (metric tonnes)												
Meat, total	0	27,308	-27,308	0	42,617	-42,617	0	75,233	-75,233	1	111,688	-111,687
Beef	0	21,298	-21,298	0	21,007	-21,007	0	18,890	-18,890	1	19,103	-19,102
Mutton and goat	0	0	0	0	420	-420	0	59	-59	0	141	-141
Pig	0	3,582	-3,582	0	5,080	-5,080	0	8,544	-8,544	0	14,072	-14,072
Poultry	0	2,000	-2,000	0	15,650	-15,650	0	47,300	-47,300	0	77,849	-77,849
Other	0	428	-428	0	460	-460	0	440	-440	0	523	-523
Milk, equivalent	0	126,603	-126,603	0	166,190	-166,190	0	19,928	-19,928	0	18,606	-18,606
Eggs, total	0	260	-260	0	350	-350	0	6,600	-6,600	0	13,689	-13,689
Hides and skins	1,500		1,500	1,500		1,500	1,500		1,500	16		16
Value (1,000 US\$)												
Meat, total	0	62,368	-62,368	0	78,500	-78,500	0	70,531	-70,531	0	89,397	-89,397
Beef	0	45,338	-45,338	0	41,900	-41,900	0	22,500	-22,500	0	16,154	-16,154
Mutton and goat	0	0	0	0	600	-600	0	151	-151	0	311	-311
Pig	0	14,030	-14,030	0	17,500	-17,500	0	19,580	-19,580	0	25,294	-25,294
Poultry	0	3,000	-3,000	0	18,500	-18,500	0	28,300	-28,300	0	47,638	-47,638
Other	0	0	0	0	0	0	0	0	0	0	0	0
Milk, total	0	39,879	-39,879	0	67,400	-67,400	0	7,890	-7,890	0	9,909	-9,909
Eggs, total	0	360	-360	0	700	-700	0	6,500	-6,500	0	10,142	-10,142
Hides and skins	1,000	0	1,000	1,000	0	1,000	1,000	0	1,000	11	0	11
Total	1,000	102,607	-101,607	1,000	146,600	-145,600	1,000	84,921	-83,921	11	109,448	-109,437

Net trade: Exports less Imports

Blanks represent no data

Source: FAO (2005a)

6. LIVESTOCK HEALTH

Total number of cases/outbreaks of selected diseases reported in all susceptible species

Disease	1997	1998	1999	2000	2001	2002	2003
African swine fever	.../7	.../...	.../...	95/...	.../...	296/47	674/33
Avian Influenza ¹							
Bluetongue				000		000	000
BSE ²					
CBPP ³	3,270/38	553/...	.../...	344/...	.../...	682/157	404/62
Classical swine fever				000		000	000
Foot and mouth disease		-		.../...	.../...	(03/2001)	(03/2001)
Lumpy skin disease	2/1	50/...	.../...	14/...	.../...	1,952/60	232/39
Newcastle disease	384/8	4,523/1	.../...	5,000/1	.../...	398/10	1,994/4
Peste des petits ruminants				000		000	000
Rift Valley fever				000		000	000
Rinderpest				000		(1972)	(1972)
Sheep and goat pox				000		000	000
Swine vesicular disease				000		000	000
Vesicular stomatitis				000		000	000

¹ Highly pathogenic avian influenza

² Bovine spongiform encephalopathy

³ Contagious bovine pleuropneumonia

no./no. number of cases/outbreaks, ... no information, - disease not reported, 000 disease never reported; (month/year) date of the last reported occurrence of the disease in previous years

Source: OIE (2004)

7. REFERENCES AND FURTHER READING

FAO (2001) Agro-ecological Distributions for Africa, Asia and North and Central America, Consultants' Report. Food and Agriculture Organisation, Rome.

FAO (2003) Cattle and small ruminant production systems in sub-Saharan Africa: a systematic review. Food and Agriculture Organisation, Rome.

FAO (2005a) FAOSTAT data. Food and Agriculture Organisation, Rome.
<http://faostat.external.fao.org/default.jsp> (accessed March, 2005).

FAO (2005b) Global Livestock Production and Health Atlas. Food and Agriculture Organisation, Rome. <http://www.fao.org/ag/aga/glipha/index.jsp> (accessed March, 2005).

LandScan (2002) Global Population Database. Oak Ridge National Laboratory, Oakridge. <http://www.ornl.gov/gist/>

OIE (2004) HANDISTATUS II. Office International des Epizooties, Paris.
<http://www.oie.int/hs2/> (accessed March, 2005).

UNDP (2004). The Human development Reports, United Nations Development Programme, New York. <http://hdr.undp.org/statistics/>

World Bank (2002) The 2002 World Bank development indicators CD-Rom. The World Bank, Washington DC.