

## LIVESTOCK SECTOR BRIEF

# CONGO, DEMOCRATIC REPUBLIC OF

Food and Agriculture Organization  
of the United Nations **FAO**

Livestock Information, Sector Analysis  
and Policy Branch **AGAL**



June 2005

## TABLE OF CONTENTS

Preface .....	ii
<b>1. General Information.....</b>	<b>1</b>
Human population, land and socio-economics .....	1
Human population trends .....	2
Trends in agricultural land .....	2
<b>2. Livestock Resources.....</b>	<b>2</b>
Livestock populations .....	2
Contribution of different species to total livestock units .....	3
Selected indicators of livestock resources .....	3
Agro-ecological zones and densities of livestock species (2000) .....	4
<b>3. Livestock Production .....</b>	<b>6</b>
Trends in annual production of meat, milk and eggs .....	6
Composition of total meat production .....	6
Carcass weights and percentage slaughtered by species.....	7
Milk yields and proportion of dairy animals.....	7
Egg yields and proportion of laying birds.....	7
Estimated feed used for livestock production .....	8
Trends in annual per capita production of meat, milk and eggs.....	8
<b>4. Consumption of Meat, Milk and Eggs .....</b>	<b>9</b>
Trends in annual consumption of meat, milk and eggs .....	9
Trends in annual per capita consumption of meat, milk and eggs.....	9
Production versus consumption for meat, milk and eggs (2002).....	10
<b>5. Trade in Livestock and Livestock Products.....</b>	<b>11</b>
Trade in agriculture and livestock.....	11
Export/import 'dependency' for livestock products .....	11
Trade in live animals .....	12
Trade in livestock products .....	13
<b>6. Livestock Health .....</b>	<b>14</b>
Total number of cases/outbreaks of selected diseases reported in all susceptible species .....	14
<b>7. References and Further Reading.....</b>	<b>15</b>

Data contained in this Livestock Sector Brief are taken from official sources. Official sources are no guarantee for data accuracy and the figures reported in this brief should be taken as indicative and not be used for official purposes. The Food and Agriculture Organization of the United Nations assumes no responsibility for its accuracy, completeness and coherence.

## PREFACE

The Livestock Sector Briefs (LSB) are intended to provide a quick overview and an approximate outlook for the livestock sector of the respective country using figures and quantitative indicators originating from official sources. The LSBs are complemented by a synthesis of policy documents available in the public domain.

The majority of the data in the LSBs refer to the country as a whole and come from FAOSTAT, which is available on the internet (<http://faostat.external.fao.org/default.jsp>). FAO, as part of its mandate, compiles information and data on various aspects of food and agriculture from all countries. The data are analysed and interpreted to support FAO's programmes and activities and, in accordance with the basic functions of the Organization, they are disseminated to the public through publications, CD-ROM, diskettes and the Internet. The country level data are officially submitted to the Division for Statistics of FAO (ESS) by various ministries of the respective countries. For details of data collection procedures see <http://faostat.fao.org/abcdq/about.htm>. The figures submitted often display inconsistencies across ministries, for example reported meat production does not always match reported meat consumption when taking into account imports and exports. FAO tries to reconcile the figures, to the effect that FAO statistics may differ from those originally submitted.

The LSBs utilise FAOSTAT data from the following domains: human population, land use, agriculture production, food supply and agricultural and food trade. These are used to derive a standard set of indicators that can quickly be compared across the countries.

Data on the economy are from the World Bank's World Development Indicators CD-Rom, which is also available online <http://www.worldbank.org/data/> and is updated every year. Animal health data are taken from the Office International des Epizooties (OIE) HANDISTATUS II <http://www.oie.int/hs2/>. These are official data supplied by member nations.

For any feedback and comment, please contact:

Gianluca Franceschini  
Livestock Information, Sector Analysis and Policy Branch  
Animal Production and Health Division  
Food and Agricultural Organisation  
Viale delle Terme di Caracalla  
00100 Rome, Italy

Tel: 00 39 06 57054463  
Fax: 00 39 06 57055749  
Email: [Gianluca.Franceschini@fao.org](mailto:Gianluca.Franceschini@fao.org)

## 1. GENERAL INFORMATION

### Human population, land and socio-economics

Human population	51.2 million
Population density on total land	22.6 persons/sqkm
Annual growth rate (1990-2000)	2.4 %
Population in agriculture	31.9 million
As proportion of total population	62.3 %
Total land area	2,267,050 sqkm
Agricultural land	228,000 sqkm
As proportion of total land	10.1 %
Land under pasture	150,000 sqkm
As proportion of agricultural land	65.8 %
Irrigated area	110 ha
Agricultural land per 100 people	44.5 ha
Agricultural land per 100 people in agriculture	71.5 ha
Agricultural population on agricultural land	139.8 persons/sqkm
GDP <sup>1</sup>	4,654 million US\$
GDP annual growth rate (1990-2000)	-3.6 %
GDP per capita/year <sup>1</sup>	90 US\$
GDP per capita annual growth rate (1990-2000)	-6.1 %
Agriculture, GDP	2,808 million US\$
As proportion of total GDP	60.3 %
Livestock, GDP <sup>1</sup>	257 million US\$
As proportion of agricultural GDP	9.2 %
Human development Rank	168 Ranking <sup>2</sup>
Human development index	0.365
Poverty incidence <sup>3</sup>	
Total	na %
Urban	na %
Rural	na %

<sup>1</sup>Constant 1995 US\$ <sup>2</sup> The HDI rank is determined using HDI values to the fifth decimal point – from 177 countries, as compiled by the UNDP; <sup>3</sup> National poverty line; na: not available

Source: World Bank (2002); UNDP (2004); FAO (2005a)

## Human population trends

Values expressed in 1,000

Population segment	Year				Annual growth rate (%)	
	1980	1990	2000	2002	1980-1990	1990-2000
Total	27,909	37,370	48,571	51,201	3.0	2.7
Rural	19,894	26,927	33,858	35,334	3.1	2.3
Urban	8,015	10,444	14,713	15,867	2.7	3.5

Source: FAO (2005a)

## Trends in agricultural<sup>1</sup> land

Values expressed in sqkm

Land type	Year				Annual growth rate (%)	
	1980	1990	2000	2002	1980-1990	1990-2000
Total	226,000	228,600	228,000	228,000	0.1	0.0
Cropped <sup>2</sup>	76,000	78,600	78,000	78,000	0.3	-0.1
Pastures	150,000	150,000	150,000	150,000	0.0	0.0

<sup>1</sup>The sum of area under arable land, permanent crops and permanent pastures

<sup>2</sup>Arable and permanent crops

Source: FAO (2005a)

## 2. LIVESTOCK RESOURCES

### Livestock populations

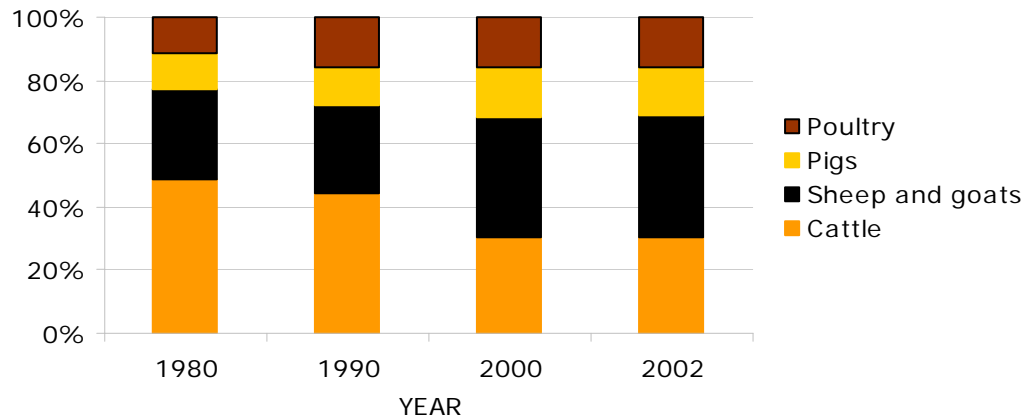
Values expressed in 1,000

Species	Year				Annual growth rate (%)	
	1980	1990	2000	2002	1980-1990	1990-2000
Cattle	1,152	1,535	822	761	2.9	-6.0
Sheep and goats	3,407	4,777	5,056	4,901	3.4	0.6
Pigs	685	1,050	1,049	953	4.4	0.0
Poultry	13,500	27,490	21,559	19,592	7.4	-2.4
Total LUs	1,189	1,730	1,342	1,257	3.8	-2.5

**LU:** *Livestock unit*; **conversion factors:** cattle (0.50), sheep and goats (0.10), pigs (0.20) and poultry (0.01)

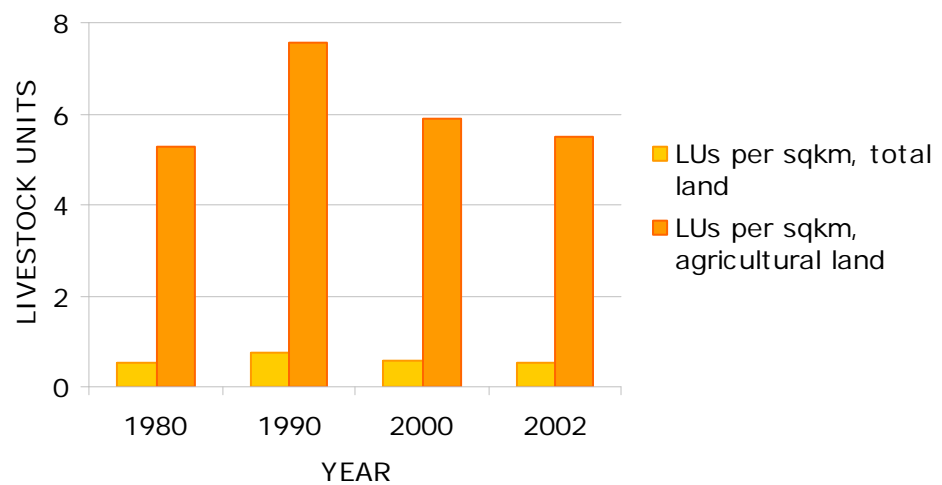
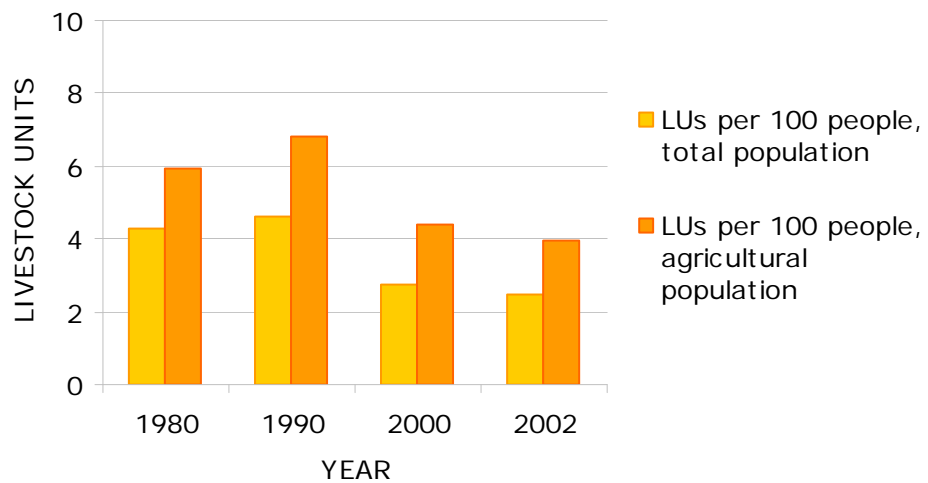
Source: FAO (2005a)

## Contribution of different species to total livestock units



Source: FAO (2005a)

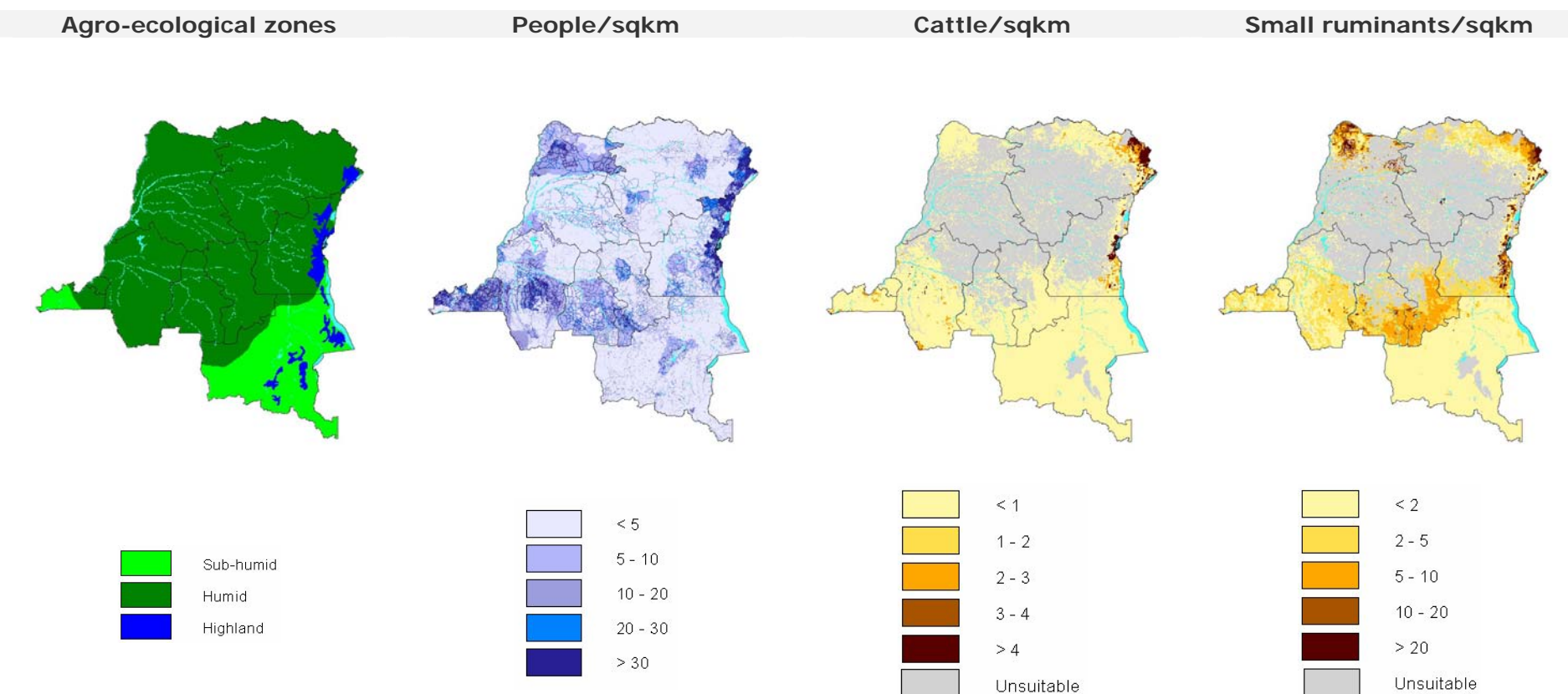
## Selected indicators of livestock resources



Source: FAO (2005a)

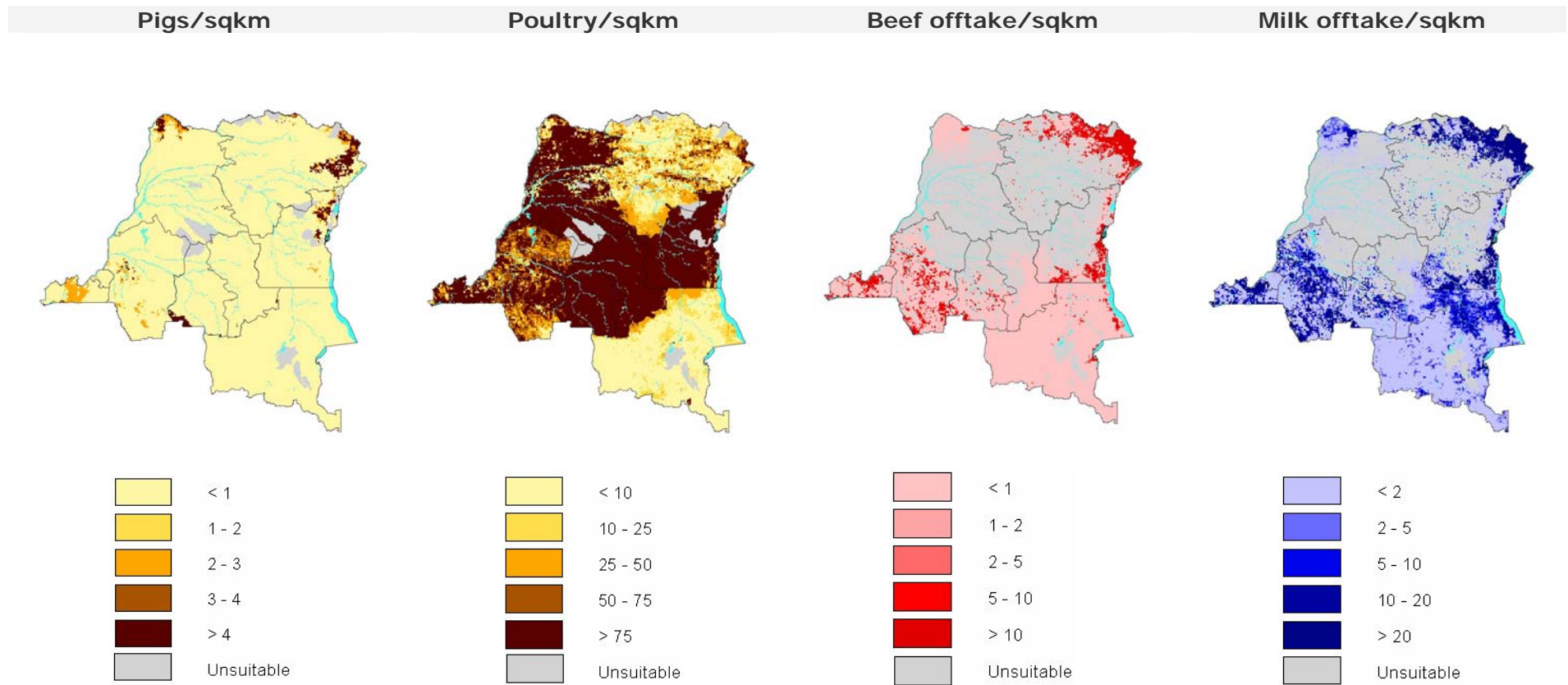
## Agro-ecological zones and densities of livestock species (2000)

Density calculated on total land area<sup>1</sup>



<sup>1</sup>Densities for livestock populations and production is based on total land suitable for livestock production

Source: FAO (2001); LandScan (2002), FAO (2005b)



Source: FAO (2005b); FAO (2003)



### 3. LIVESTOCK PRODUCTION

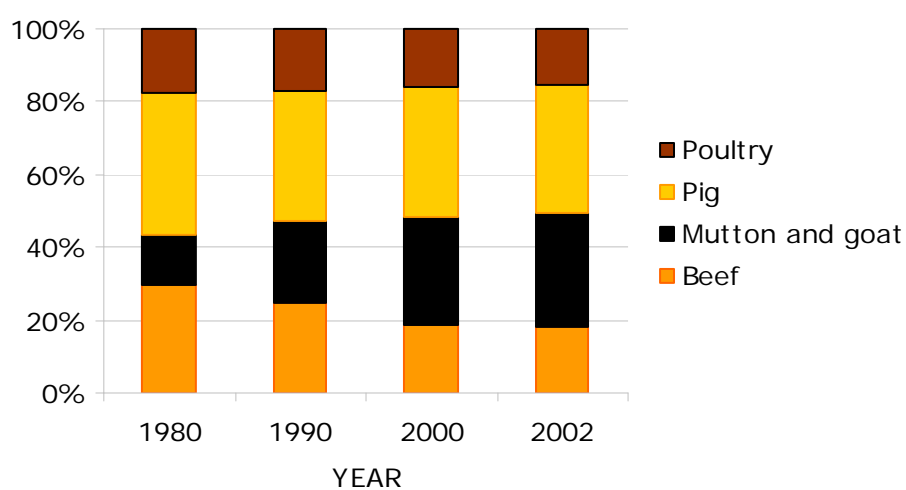
#### Trends in annual production of meat, milk and eggs

1,000 metric tonnes

Product	Year				Annual growth rate (%)	
	1980	1990	2000	2002	1980-1990	1990-2000
Meat, total	171.9	206.7	217.0	211.9	1.9	0.5
Beef	20.3	21.8	13.5	12.5	0.7	-4.7
Mutton and goat	9.7	19.9	21.9	21.2	7.5	0.9
Pig	26.7	31.0	26.1	23.7	1.5	-1.7
Poultry	12.2	15.0	11.6	10.5	2.1	-2.5
Milk, total	6.2	7.8	5.2	5.0	2.3	-4.0
Eggs, total	7.5	8.2	7.0	6.0	0.9	-1.6

Source: FAO (2005a)

#### Composition of total meat production



Source: FAO (2005a)

## Carcass weights and percentage slaughtered by species

Species/year	Carcass weight (kg/animal)				Percentage slaughtered/year			
	1980	1990	2000	2002	1980	1990	2000	2002
Cattle	136.1	156.3	155.9	155.1	13.0	9.1	10.5	10.6
Sheep	10.7	9.9	10.0	9.9	30.9	30.8	31.0	31.0
Goat	9.9	11.5	11.6	11.5	27.4	38.8	39.6	40.0
Pigs	49.9	40.5	44.1	44.1	78.1	73.0	56.4	56.4
Poultry	0.8	0.7	0.6	0.6	117.5	83.7	89.0	89.0

Source: FAO (2005a)

## Milk yields and proportion of dairy animals

Species/year	Milk yield (kg/year)				Percentage milked			
	1980	1990	2000	2002	1980	1990	2000	2002
Cattle	838	848	825	833	0.6	0.6	0.8	0.8

Source: FAO (2005a)

## Egg yields and proportion of laying birds

Species/year	Eggs (kg/year)				Percentage laying			
	1980	1990	2000	2002	1980	1990	2000	2002
Chicken	2.8	2.9	2.8	3.3	20.0	10.4	11.6	9.2

Source: FAO (2005a)

## Estimated feed used for livestock production

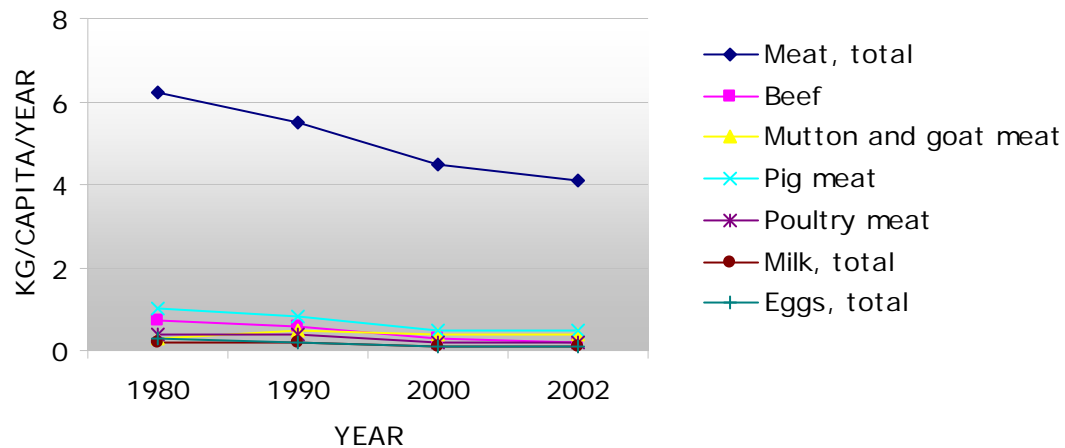
1,000 metric tonnes

Product	Year				Annual growth rate (%)	
	1980	1990	2000	2002	1980-1990	1990-2000
Maize	50.0	65.0	82.9	80.8	2.7	2.5
Barley						
Sorghum						
Millet						
Wheat						
Brans	53.7	78.2	89.2	101.9	3.8	1.3
Rice Paddy, equivalent						
Roots and Tuber, dry equivalent	454.3	648.9	268.2	251.2	3.6	-8.5
Pulses						
Oil crops	0.0	0.0	0.2	1.6		

Blanks represent no data

Source: FAO (2005a)

## Trends in annual per capita production of meat, milk and eggs



Source: FAO (2005a)

## 4. CONSUMPTION OF MEAT, MILK AND EGGS

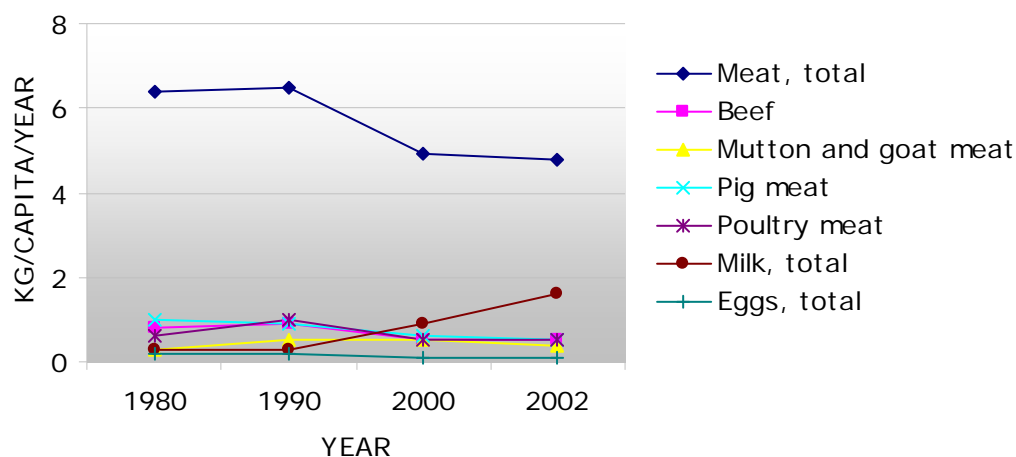
### Trends in annual consumption of meat, milk and eggs

1,000 metric tonnes

Product	Year				Annual growth rate (%)	
	1980	1990	2000	2002	1980-1990	1990-2000
Meat, total	178.8	241.6	239.0	244.3	3.1	-0.1
Beef	23.0	33.6	22.6	27.1	3.9	-3.9
Sheep and goat	9.7	20.0	21.9	21.2	7.5	0.9
Pig	26.9	32.0	26.9	25.6	1.8	-1.7
Poultry	16.2	37.0	23.4	26.3	8.6	-4.5
Milk, total	9.1	13.0	44.4	81.8	3.6	13.1
Eggs, total	5.6	5.8	5.1	4.6	0.3	-1.3

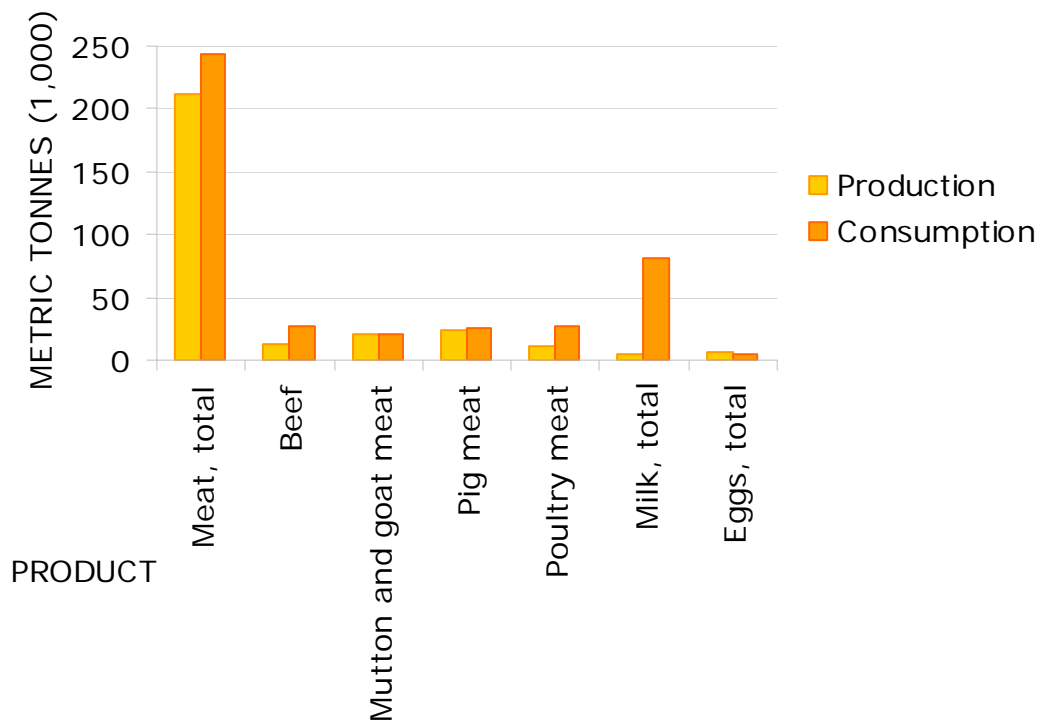
Source: FAO (2005a)

### Trends in annual per capita consumption of meat, milk and eggs



Source: FAO (2005a)

## Production versus consumption for meat, milk and eggs (2002)



Source: FAO (2005a)

## 5. TRADE IN LIVESTOCK AND LIVESTOCK PRODUCTS

### Trade in agriculture and livestock<sup>1</sup>

Values in million US\$

Product	Exports				Imports			
	1980	1990	2000	2002	1980	1990	2000	2002
Total								
Agricultural								
% agricultural								
Livestock								
% livestock								

Blanks represent no data

<sup>1</sup>Total trade in goods and services expressed in current US\$. Source: World Bank (2002)  
Agricultural trade refers to all agricultural products, while livestock trade refers to trade in livestock products and live animals. Source: FAO (2005b)

### Export/import 'dependency' for livestock products

Product	Exports as percentage of production				Imports as percentage of consumption			
	1980	1990	2000	2002	1980	1990	2000	2002
Meat, total	0.00	0.00	0.00	0.01	3.86	14.41	9.16	13.16
Beef and buffalo	0.00	0.00	0.00	0.00	11.73	35.13	40.13	53.80
Sheep and goat	0.00	0.00	0.00	0.00	0.41	0.35	0.23	0.03
Pig	0.00	0.00	0.00	0.00	0.41	2.81	2.15	5.88
Poultry	0.00	0.00	0.00	0.26	24.69	59.46	50.48	60.07
Milk, total	0.00	0.00	0.00	0.00	507.76	248.91	93.35	97.52
Eggs, total	0.00	0.00	0.00	0.00	8.90	0.69	4.54	12.94

Source: FAO (2005a)

Product	Net exports as percentage of production				Net imports as percentage of consumption			
	1980	1990	2000	2002	1980	1990	2000	2002
Meat, total	0.00	0.00	0.00	0.00	3.86	14.41	9.16	13.15
Beef and buffalo	0.00	0.00	0.00	0.00	11.73	35.13	40.13	53.80
Sheep and goat	0.00	0.00	0.00	0.00	0.00	0.00	0.00	0.00
Pig	0.00	0.00	0.00	0.00	0.00	0.00	0.00	0.00
Poultry	0.00	0.00	0.00	0.00	24.69	59.46	50.48	59.96
Milk, total	0.00	0.00	0.00	0.00	507.76	248.91	93.35	97.52
Eggs, total	0.00	0.00	0.00	0.00	3.86	14.41	9.16	13.15

Source: FAO (2005a)

## Trade in live animals

Species	1980			1990			2000			2002		
	Export	Import	Net trade	Export	Import	Net trade	Export	Import	Net trade	Export	Import	Net trade
<b>Quantities (count)</b>												
Cattle	0	90	-90	0	0	0	0	0	0	0	2	-2
Sheep and goats	0	6,000	-6,000	0	4,500	-4,500	0	4,500	-4,500	0	4,500	-4,500
Pigs	0	0	0	0	0	0	0	0	0	0	74	-74
Poultry (1,000)		320	-320		100	-100		290	-290		266	-266
<b>Value (1,000 US\$)</b>												
Cattle	0	140	-140	0	0	0	0	0	0	0	4	-4
Sheep and goats	0	210	-210	0	260	-260	0	260	-260	0	260	-260
Pigs		0	0		0	0		0	0		30	-30
Poultry (1,000)	0	50	-50	0	80	-80	0	330	-330	0	198	-198
<b>Total</b>	<b>0</b>	<b>400</b>	<b>-400</b>	<b>0</b>	<b>340</b>	<b>-340</b>	<b>0</b>	<b>590</b>	<b>-590</b>	<b>0</b>	<b>492</b>	<b>-492</b>

**Net trade:** Exports less Imports

Blanks represent no data

Source: FAO (2005a)

## Trade in livestock products

Product	1980			1990			2000			2002		
	Export	Import	Net trade	Export	Import	Net trade	Export	Import	Net trade	Export	Import	Net trade
<b>Quantities (metric tonnes)</b>												
Meat, total	0	6,901	-6,901	0	34,817	-34,817	0	21,894	-21,894	27	32,141	-32,114
Beef and buffalo	0	2,700	-2,700	0	11,800	-11,800	0	9,070	-9,070	0	14,600	-14,600
Mutton and goat		40	-40		70	-70		50	-50		7	-7
Pig		111	-111		897	-897		577	-577		1,507	-1,507
Poultry	0	4,000	-4,000	0	22,000	-22,000	0	11,825	-11,825	27	15,812	-15,784
Other	0	50	-50	0	50	-50	0	372	-372	0	214	-214
Milk, total	0	46,380	-46,380	0	32,360	-32,360	0	41,458	-41,458	0	79,768	-79,768
Eggs, total		500	-500		40	-40		230	-230		600	-600
Hides and skins	0	0	0	130	0	130	10	7	3	10	9	1
<b>Value (1,000 US\$)</b>												
Meat, total	0	13,030	-13,030	0	45,560	-45,560	0	53,361	-53,361	10	31,866	-31,856
Beef and buffalo	0	5,800	-5,800	0	15,200	-15,200	0	9,650	-9,650	0	17,522	-17,522
Mutton and goat		110	-110		180	-180		80	-80		21	-21
Pig		620	-620		1,180	-1,180		707	-707		1,453	-1,453
Poultry	0	6,500	-6,500	0	29,000	-29,000	0	42,729	-42,729	10	12,829	-12,819
Other	0	0	0	0	0	0	0	195	-195	0	41	-41
Milk, total	0	17,400	-17,400	0	15,850	-15,850	0	15,557	-15,557	0	25,382	-25,382
Eggs, total		900	-900		55	-55		150	-150		508	-508
Hides and skins	0	0	0	280	0	280	15	13	2	15	19	-4
<b>Total</b>	<b>0</b>	<b>31,330</b>	<b>-31,330</b>	<b>280</b>	<b>61,465</b>	<b>-61,185</b>	<b>15</b>	<b>69,081</b>	<b>-69,066</b>	<b>25</b>	<b>57,775</b>	<b>-57,750</b>

**Net trade:** Exports less Imports

Blanks represent no data

Source: FAO (2005a)



## 6. LIVESTOCK HEALTH

### Total number of cases/outbreaks of selected diseases reported in all susceptible species

Disease	1997	1998	1999	2000	2001	2002	2003
African swine fever		-			.../...	.../3	.../...
Avian Influenza <sup>1</sup>	-					000	
Bluetongue	-					000	
BSE <sup>2</sup>	-	-		-		000	
CBPP <sup>3</sup>	.../2		.../...			.../...	
Classical swine fever	-	-				000	
Foot and mouth disease	.../1	520/1				.../3	
Lumpy skin disease	.../3					.../...	
Newcastle disease	.../...	32,000/11		.../...		.../...	.../...
Peste des petits ruminants	-					.../...	.../...
Rift Valley fever	-	-		-		000	
Rinderpest	-	-		-		-	
Sheep and goat pox						000	
Swine vesicular disease							
Vesicular stomatitis							

<sup>1</sup> Highly pathogenic avian influenza

<sup>2</sup> Bovine spongiform encephalopathy

<sup>3</sup> Contagious bovine pleuropneumonia

</> number of cases/outbreaks, ... no information, < disease not reported, 000 disease never reported; (month/year) date of the last reported occurrence of the disease in previous years

Source: OIE (2004)

## 7. REFERENCES AND FURTHER READING

**FAO (2001)** Agro-ecological Distributions for Africa, Asia and North and Central America, Consultants' Report. Food and Agriculture Organisation, Rome.

**FAO (2003)** Cattle and small ruminant production systems in sub-Saharan Africa: a systematic review. Food and Agriculture Organisation, Rome.

**FAO (2005a)** FAOSTAT data. Food and Agriculture Organisation, Rome.  
<http://faostat.external.fao.org/default.jsp> (accessed March, 2005).

**FAO (2005b)** Global Livestock Production and Health Atlas. Food and Agriculture Organisation, Rome. <http://www.fao.org/ag/aga/glipha/index.jsp> (accessed March, 2005).

**LandScan (2002)** Global Population Database. Oak Ridge National Laboratory, Oakridge. <http://www.ornl.gov/gist/>

**OIE (2004)** HANDISTATUS II. Office International des Epizooties, Paris.  
<http://www.oie.int/hs2/> (accessed March, 2005).

**UNDP (2004)**. The Human development Reports, United Nations Development Programme, New York. <http://hdr.undp.org/statistics/>

**World Bank (2002)** The 2002 World Bank development indicators CD-Rom. The World Bank, Washington DC.