

LIVESTOCK SECTOR BRIEF

DJIBOUTI

Food and Agriculture Organization
of the United Nations • **FAO**

Livestock Information, Sector Analysis
and Policy Branch • **AGAL**



July 2005

TABLE OF CONTENTS

Preface	ii
1. General Information.....	1
Human population, land and socio-economics	1
Human population trends	2
Trends in agricultural land	2
2. Livestock Resources.....	2
Livestock populations	2
Contribution of different species to total livestock units	3
Selected indicators of livestock resources	3
Agro-ecological zones and densities of livestock species (2000)	4
3. Livestock Production	6
Trends in annual production of meat, milk and eggs	6
Composition of total meat production	6
Carcass weights and percentage slaughtered by species.....	7
Milk yields and proportion of dairy animals.....	7
Egg yields and proportion of laying birds.....	7
Estimated feed used for livestock production.....	8
Trends in annual per capita production of meat, milk and eggs.....	8
4. Consumption of Meat, Milk and Eggs	9
Trends in annual consumption of meat, milk and eggs	9
Trends in annual per capita consumption of meat, milk and eggs.....	9
Production versus consumption for meat, milk and eggs (2002)	10
5. Trade in Livestock and Livestock Products.....	11
Trade in agricultural and livestock products.....	11
Export/import 'dependency' for livestock products	11
Trade in live animals	12
Trade in livestock products	13
6. Livestock Health	14
Total number of cases/outbreaks of selected diseases reported in all susceptible species	14
7. References and Further Reading.....	15

Data contained in this Livestock Sector Brief are taken from official sources. Official sources are no guarantee for data accuracy and the figures reported in this brief should be taken as indicative and not be used for official purposes. The Food and Agriculture Organization of the United Nations assumes no responsibility for its accuracy, completeness and coherence.

PREFACE

The Livestock Sector Briefs (LSB) are intended to provide a quick overview and an approximate outlook for the livestock sector of the respective country using figures and quantitative indicators originating from official sources. The LSBs are complemented by a synthesis of policy documents available in the public domain.

The majority of the data in the LSBs refer to the country as a whole and come from FAOSTAT, which is available on the internet (<http://faostat.external.fao.org/default.jsp>). FAO, as part of its mandate, compiles information and data on various aspects of food and agriculture from all countries. The data are analysed and interpreted to support FAO's programmes and activities and, in accordance with the basic functions of the Organization, they are disseminated to the public through publications, CD-ROM, diskettes and the Internet. The country level data are officially submitted to the Division for Statistics of FAO (ESS) by various ministries of the respective countries. For details of data collection procedures see <http://faostat.fao.org/abcdq/about.htm>. The figures submitted often display inconsistencies across ministries, for example reported meat production does not always match reported meat consumption when taking into account imports and exports. FAO tries to reconcile the figures, to the effect that FAO statistics may differ from those originally submitted.

The LSBs utilise FAOSTAT data from the following domains: human population, land use, agriculture production, food supply and agricultural and food trade. These are used to derive a standard set of indicators that can quickly be compared across the countries.

Data on the economy are from the World Bank's World Development Indicators CD-Rom, which is also available online <http://www.worldbank.org/data/> and is updated every year. Animal health data are taken from the Office International des Epizooties (OIE) HANDISTATUS II <http://www.oie.int/hs2/>. These are official data supplied by member nations.

For any feedback and comment, please contact:

Pius Chilonda - Livestock Information Analyst
Livestock Information, Sector Analysis and Policy Branch
Animal Production and Health Division
Food and Agricultural Organisation
Viale delle Terme di Caracalla
00100 Rome, Italy

Tel: 00 39 06 57056691
Fax: 00 39 06 57055749
Email: Pius.Chilonda@fao.org

1. GENERAL INFORMATION

Human population, land and socio-economics

Human population	0.7 million
Population density on total land	29.9 persons/sqkm
Annual growth rate (1990-2000)	2.3 %
Population in agriculture	0.5 million
As proportion of total population	77.6 %
Total land area	23,180 sqkm
Agricultural land	13,010 sqkm
As proportion of total land	56.1 %
Land under pasture	13,000 sqkm
As proportion of total land	99.9 %
Irrigated area	10 ha
Agricultural land per 100 people	188 ha
Agricultural land per 100 people in agriculture	242 ha
Agricultural population density on agricultural land	41.4 persons/sqkm
GDP ¹	509 million US\$
GDP annual growth rate (1990-2000)	-0.7 %
GDP per capita/year ¹	734 US\$
GDP per capita annual growth rate (1990-2000)	-3.4 %
Agriculture, GDP	na million US\$
As proportion of total GDP	na %
Livestock, GDP ¹	na million US\$
As proportion of agricultural GDP	82.2 %
Human development Rank	154 Ranking ²
Human development index	0.454
Poverty incidence ³	
Total	45.1 %
Urban	na %
Rural	86.5 %

¹Constant 1995 US\$ ²The HDI rank is determined using HDI values to the fifth decimal point – from 177 countries, as compiled by the UNDP; ³National poverty line; na: not available

Source: World Bank (2002); UNDP (2004); FAO (2005a)

Human population trends

Values expressed in 1,000

Population segment	Year				Annual growth rate (%)	
	1980	1990	2000	2002	1980-1990	1990-2000
Total	327	528	666	693	4.9	2.3
Rural	109	130	118	116	1.8	-1.0
Urban	217	397	548	577	6.2	3.3

Source: FAO (2005a)

Trends in agricultural¹ land

Values expressed in sqkm

Land type	Year				Annual growth rate (%)	
	1980	1990	2000	2002	1980-1990	1990-2000
Total	13,010	12,990	13,010	13,010	0.0	0.0
Cropped ²	10	10	10	10	0.0	0.0
Pastures	13,000	12,980	13,000	13,000	0.0	0.0

¹The sum of area under arable land, permanent crops and permanent pastures

²Arable and permanent crops

Source: FAO (2005a)

2. LIVESTOCK RESOURCES

Livestock populations

Values expressed in 1,000

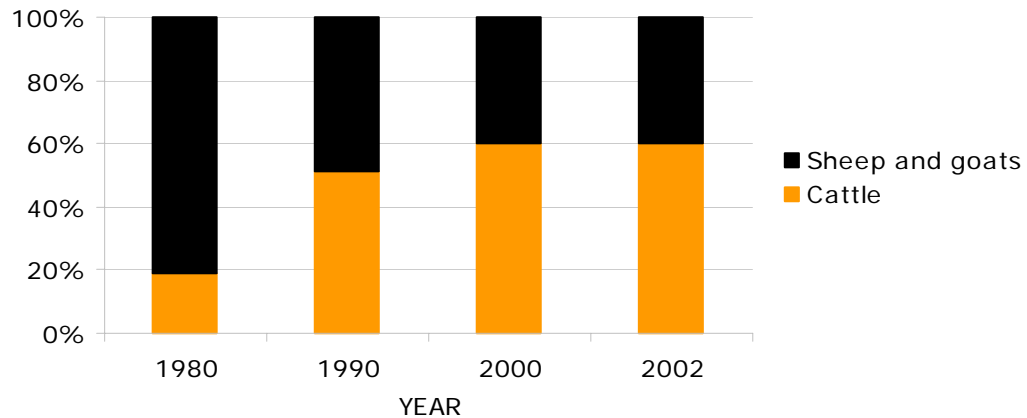
Species	Year				Annual growth rate (%)	
	1980	1990	2000	2002	1980-1990	1990-2000
Cattle	46	195	297	297	15.5	4.3
Sheep and goats	995	932	977	978	-0.7	0.5
Pigs						
Poultry						
Total LUs	122	191	246	246	4.5	2.6

Blanks represent no data

LU: Livestock unit; **conversion factors:** cattle (0.50), sheep and goats (0.10), pigs (0.20) and poultry (0.01)

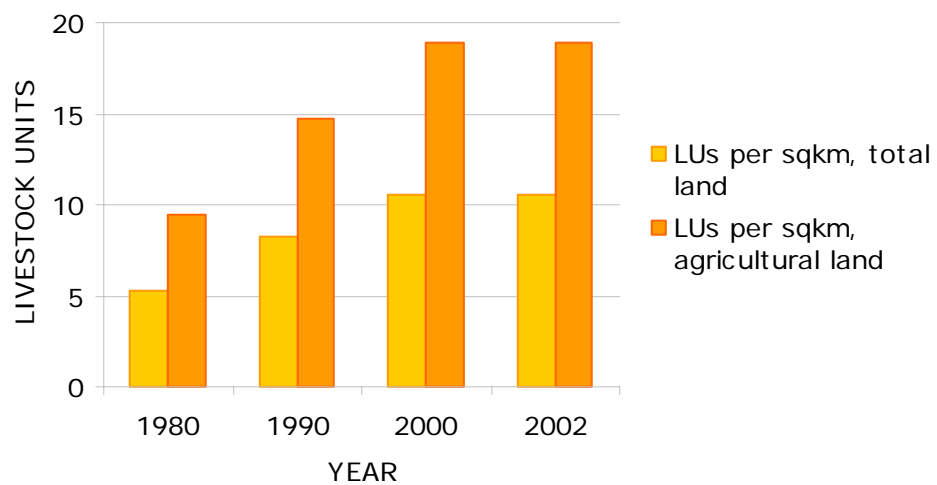
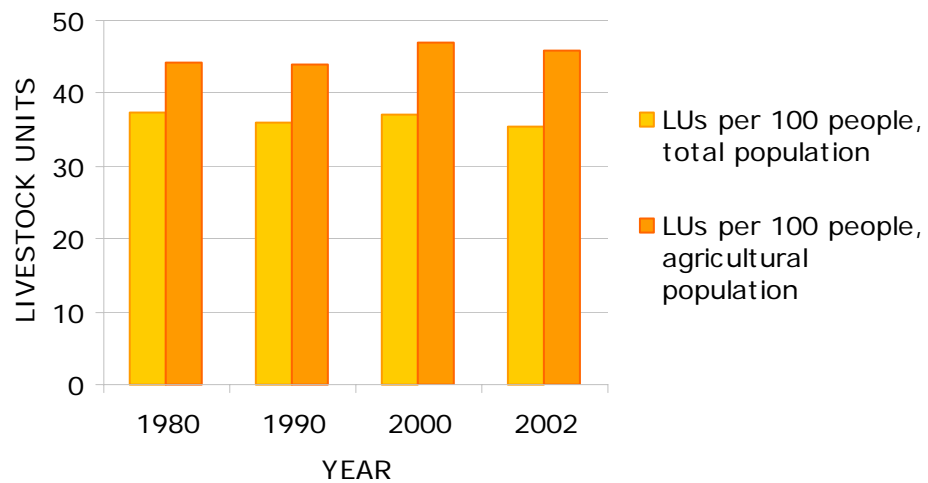
Source: FAO (2005a)

Contribution of different species to total livestock units



Source: FAO (2005a)

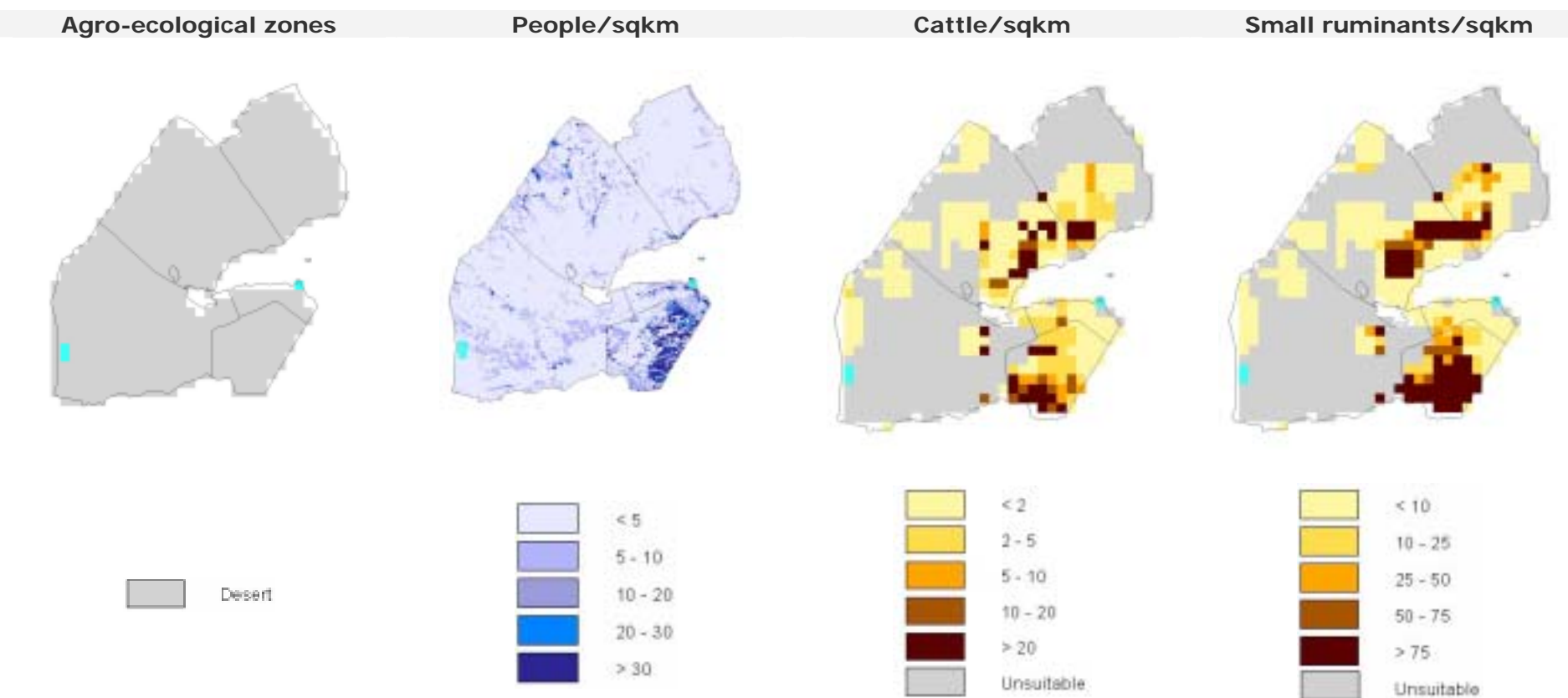
Selected indicators of livestock resources



Source: FAO (2005a)

Agro-ecological zones and densities of livestock species (2000)

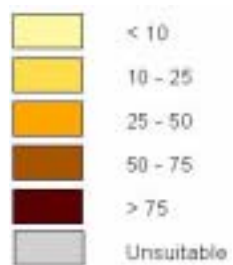
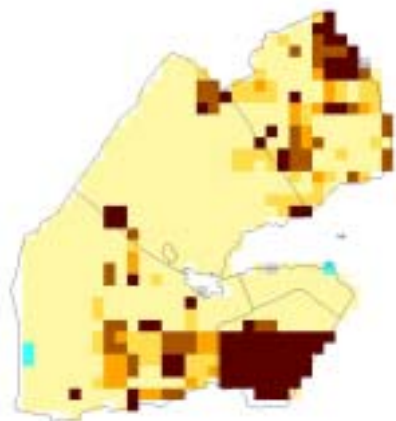
Density calculated on total land area¹



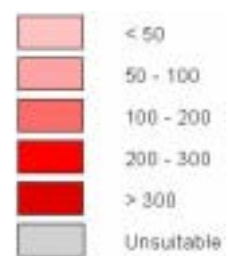
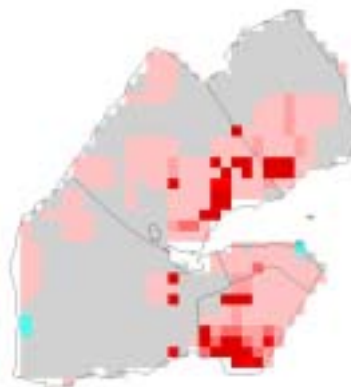
¹Densities for livestock populations and production are based on total land suitable for livestock production

Source: FAO (2001); LandScan (2002), FAO (2005b)

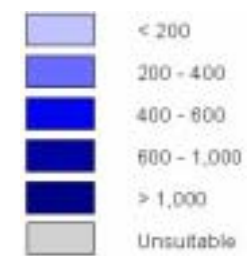
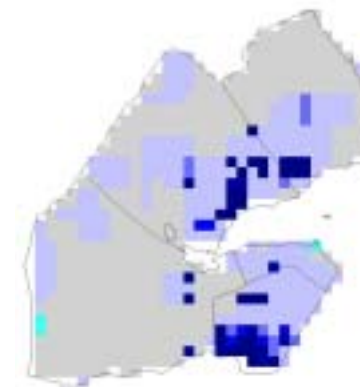
Poultry/sqkm



Beef offtake/sqkm



Milk offtake/sqkm



Source: FAO (2005b); FAO (2003)

3. LIVESTOCK PRODUCTION

Trends in annual production of meat, milk and eggs

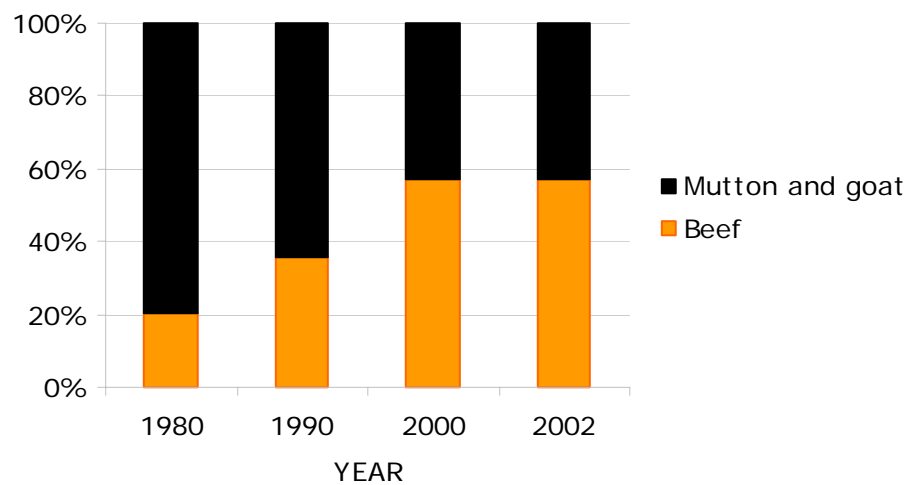
1,000 metric tonnes

Product	Year				Annual growth rate (%)	
	1980	1990	2000	2002	1980-1990	1990-2000
Meat, total	6.8	6.9	11.2	11.2	0.2	5.0
Beef	1.3	2.2	6.0	6.0	5.8	10.4
Mutton and goat	5.0	4.1	4.5	4.5	-2.1	1.1
Pig						
Poultry						
Milk, total	5.6	11.8	13.8	14.0	7.7	1.6
Eggs, total						

Blanks represent no data

Source: FAO (2005a)

Composition of total meat production



Source: FAO (2005a)

Carcass weights and percentage slaughtered by species

Species/year	Carcass weight (kg/animal)				Percentage slaughtered/year			
	1980	1990	2000	2002	1980	1990	2000	2002
Cattle	110.0	110.0	110.0	110.0	25.2	10.5	18.5	18.5
Sheep	10.4	10.4	10.4	10.4	48.8	41.4	45.1	45.1
Goat	12.5	12.5	12.5	12.5	40.3	35.4	36.8	36.7
Pigs	110.0	110.0	110.0	110.0	25.2	10.5	18.5	18.5
Poultry								

Blanks represent no data

Source: FAO (2005a)

Milk yields and proportion of dairy animals

Species/year	Milk yield (kg/year)				Percentage milked			
	1980	1990	2000	2002	1980	1990	2000	2002
Cattle	350	350	350	350	10.0	10.0	7.7	7.7

Source: FAO (2005a)

Egg yields and proportion of laying birds

Species/year	Eggs (kg/year)				Percentage laying			
	1980	1990	2000	2002	1980	1990	2000	2002
Chicken								

Blanks represent no data

Source: FAO (2005a)

Estimated feed used for livestock production

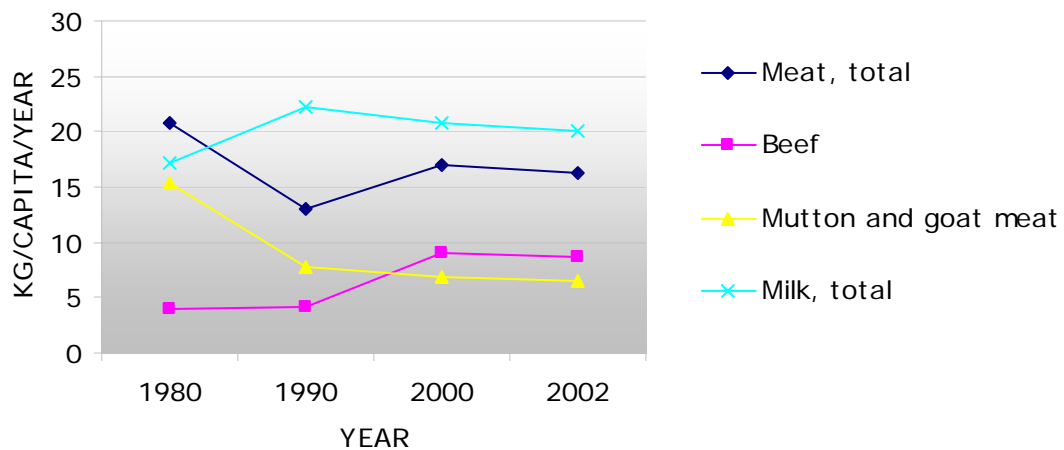
1,000 metric tonnes

Product	Year				Annual growth rate (%)	
	1980	1990	2000	2002	1980-1990	1990-2000
Maize						
Barley						
Sorghum						
Millet						
Wheat						
Brans	0.5	1.7	1.1	27	13.6	-4.5
Rice Paddy, equivalent						
Roots and Tuber, dry equivalent						
Pulses						
Oil crops						

Blanks represent no data

Source: FAO (2005a)

Trends in annual per capita production of meat, milk and eggs



Source: FAO (2005a)

4. CONSUMPTION OF MEAT, MILK AND EGGS

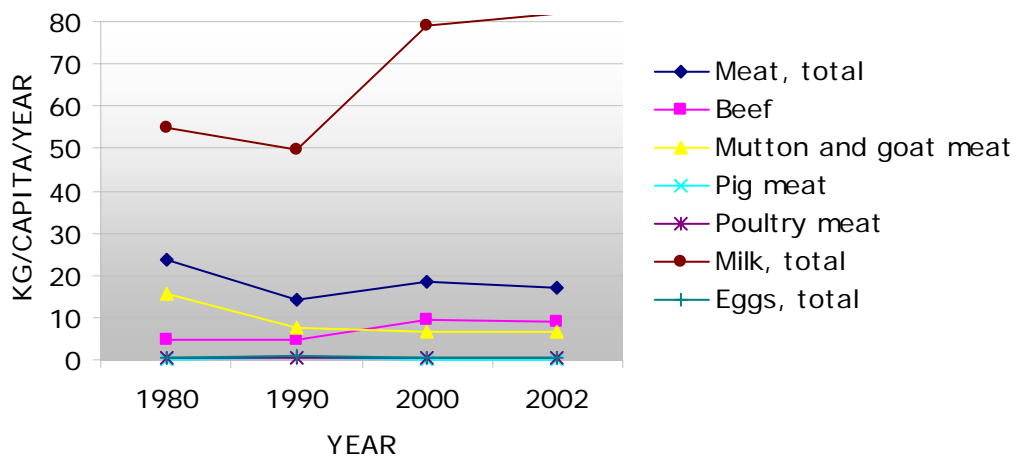
Trends in annual consumption of meat, milk and eggs

1,000 metric tonnes

Product	Year				Annual growth rate (%)	
	1980	1990	2000	2002	1980-1990	1990-2000
Meat, total	7.7	7.6	12.2	11.9	-0.2	4.9
Beef	1.5	2.4	6.3	6.1	4.6	10.2
Sheep and goat	5.0	4.1	4.5	4.5	-2.1	1.1
Pig	0.1	0.3	0.1	0.2	13.5	-7.2
Poultry	0.2	0.3	0.4	0.4	1.3	4.2
Milk, total	17.9	26.3	52.8	56.8	3.9	7.2
Eggs, total	0.2	0.4	0.2	0.4	9.6	-7.0

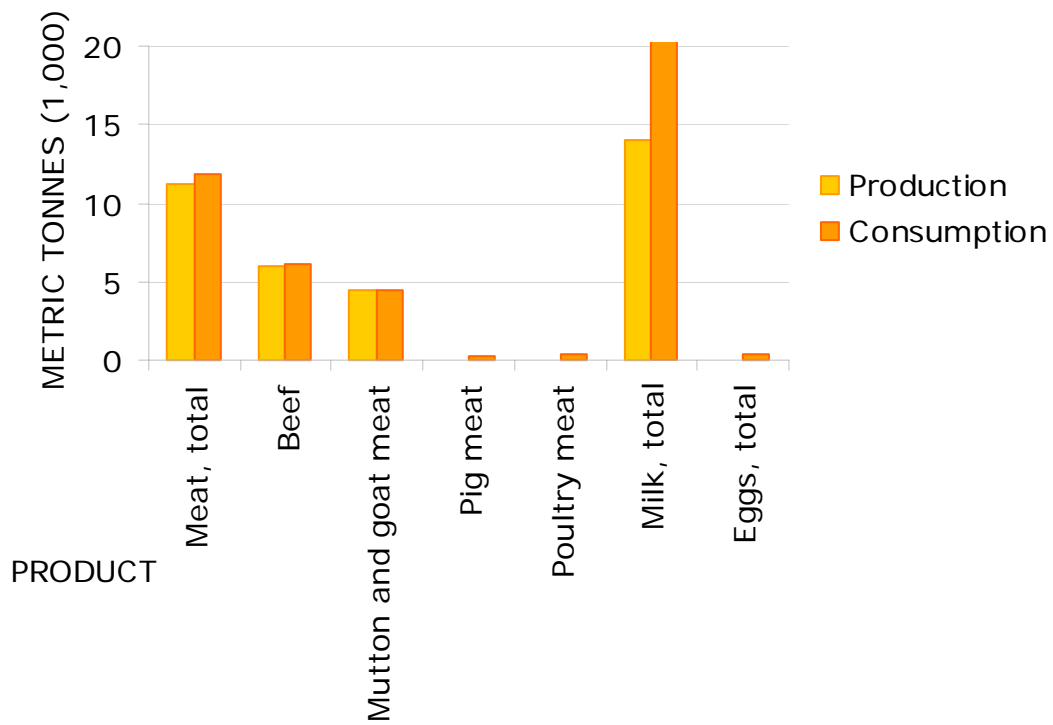
Source: FAO (2005a)

Trends in annual per capita consumption of meat, milk and eggs



Source: FAO (2005a)

Production versus consumption for meat, milk and eggs (2002)



Source: FAO (2005a)

5. TRADE IN LIVESTOCK AND LIVESTOCK PRODUCTS

Trade in agricultural and livestock¹ products

Values in million US\$

Product	Exports				Imports			
	1980	1990	2000	2002	1980	1990	2000	2002
Total			246.5				347.2	
Agricultural	2.5	8.7	2.1	17.8	77.1	81.0	132.9	174.5
% agricultural			0.8				38.3	
Livestock	2.5	8.7	1.5	2.0	13.3	9.3	17.5	22.3
% livestock			0.6				5.0	

Blanks represent no data

¹Total trade in goods and services expressed in current US\$. Source: World Bank (2002)
Agricultural trade refers to all agricultural products, while livestock trade refers to trade in livestock products and live animals. Source: FAO (2005b)

Export/import 'dependency' for livestock products

Product	Exports as percentage of production				Imports as percentage of consumption			
	1980	1990	2000	2002	1980	1990	2000	2002
Meat, total	0.00	0.00	0.00	0.00	11.47	7.71	7.23	5.13
Beef	0.00	0.00	0.00	0.00	15.72	5.61	3.94	0.60
Sheep and goat	0.00	0.00	0.00	0.00	0.14	0.07	0.22	0.02
Pig	0.00	0.00	0.00	0.00	100.00	57.76	69.36	70.07
Poultry	0.00	0.00	0.00	0.00	100.00	100.00	100.00	100.00
Milk, equivalent	0.00	0.00	0.00	11.91	150.41	62.74	81.67	84.54
Eggs, total	0.00	0.00	0.00	0.00	100.00	100.00	100.00	100.00

Source: FAO (2005a)

Product	Net exports as percentage of production				Net imports as percentage of consumption			
	1980	1990	2000	2002	1980	1990	2000	2002
Meat, total	0.00	0.00	0.00	0.00	11.47	7.71	7.23	5.13
Beef	0.00	0.00	0.00	0.00	15.72	5.61	3.94	0.6
Sheep and goat	0.00	0.00	0.00	0.00	0.00	0.00	0.00	0.00
Pig	0.00	0.00	0.00	0.00	100.00	57.76	69.36	70.07
Poultry	0.00	0.00	0.00	0.00	100.00	100.00	100.00	100.00
Milk, equivalent	0.00	0.00	0.00	0.00	150.41	62.74	81.67	81.62
Eggs, total	0.00	0.00	0.00	0.00	100.00	100.00	100.00	100.00

Source: FAO (2005a)

Trade in live animals

Species	1980			1990			2000			2002		
	Export	Import	Net trade	Export	Import	Net trade	Export	Import	Net trade	Export	Import	Net trade
Quantities (count)												
Cattle	10,000	10	9,990	78,133	100	78,033	10,000	0	10,000	10,000	0	10,000
Sheep and goats	8,000	0	8,000	0	0	0	0	0	0	0	0	0
Pigs		0	0		0	0		0	0		0	0
Poultry (1,000)		0	0		0	0		0	0		1	-1
Value (1,000 US\$)												
Cattle	1,300	8	1,292	7,000	68	6,932	1,500	0	1,500	1,500	0	1,500
Sheep and goats	400	0	400	0	0	0	0	0	0	0	0	0
Pigs		0	0		0	0		0	0		0	0
Poultry (1,000)		5	-5		0	0		0	0		1	-1
Total	1,700	13	1,687	7,000	68	6,932	1,500	0	1,500	1,500	1	1,499

Net trade: Exports less Imports

Blanks represent no data

Source: FAO (2005a)

Trade in livestock products

Product	1980			1990			2000			2002		
	Export	Import	Net trade	Export	Import	Net trade	Export	Import	Net trade	Export	Import	Net trade
Quantities (metric tonnes)												
Meat, total	0	887	-887	0	584	-584	0	879	-879	0	612	-612
Beef	0	238	-238	0	133	-133	0	248	-248	0	36	-36
Mutton and goat		7	-7		3	-3		10	-10		1	-1
Pig	0	73	-73	0	149	-149	0	85	-85	0	108	-108
Poultry	0	244	-244	0	279	-279	0	420	-420	0	359	-359
Other	0	325	-325	0	19	-19	0	117	-117	0	107	-107
Milk, equivalent	0	26,922	-26,922	0	16,494	-16,494	0	43,080	-43,080	1,662	48,020	-46,358
Eggs, total	0	173	-173	0	434	-434	0	210	-210	0	437	-437
Hides and skins	225	0	225	396	0	396	0	0	0	0	281	-281
Value (1,000 US\$)												
Meat, total	0	3,475	-3,475	0	2,461	-2,461	0	1,626	-1,626	0	1,397	-1,397
Beef	0	1,147	-1,147	0	849	-849	0	296	-296	0	109	-109
Mutton and goat		34	-34		28	-28		20	-20		6	-6
Pig	0	384	-384	0	957	-957	0	375	-375	0	466	-466
Poultry	0	622	-622	0	551	-551	0	510	-510	0	460	-460
Other	0	1,288	-1,288	0	76	-76	0	425	-425	0	356	-356
Milk, equivalent	0	9,372	-9,372	0	6,201	-6,201	0	15,610	-15,610	515	19,685	-19,170
Eggs, total	0	450	-450	0	619	-619	0	280	-280	0	430	-430
Hides and skins	800	0	800	1,700	0	1,700	0	0	0	0	780	-780
Total	800	13,297	-12,497	1,700	9,281	-7,581	0	17,516	-17,516	515	22,292	-21,777

Net trade: Exports less Imports

Blanks represent no data

Source: FAO (2005a)

6. LIVESTOCK HEALTH

Total number of cases/outbreaks of selected diseases reported in all susceptible species

Disease	1997	1998	1999	2000	2001	2002	2003
African swine fever						000	000
Avian Influenza ¹							
Bluetongue							
BSE ²						-	-
CBPP ³						.../...	.../...
Classical swine fever						000	000
Foot and mouth disease						-	-
Lumpy skin disease						.../...	.../...
Newcastle disease						.../...	.../...
Peste des petits ruminants						-	-
Rift Valley fever						.../...	.../...
Rinderpest						-	-
Sheep and goat pox						.../...	.../...
Swine vesicular disease						000	000
Vesicular stomatitis						-	-

¹ Highly pathogenic avian influenza

² Bovine spongiform encephalopathy

³ Contagious bovine pleuropneumonia

no./no. number of cases/outbreaks, ... no information, - disease not reported, 000 disease never reported; (month/year) date of the last reported occurrence of the disease in previous years

Source: OIE (2004)

7. REFERENCES AND FURTHER READING

- FAO (2001)** Agro-ecological Distributions for Africa, Asia and North and Central America, Consultants' Report. Food and Agriculture Organisation, Rome.
- FAO (2003)** Cattle and small ruminant production systems in sub-Saharan Africa: a systematic review. Food and Agriculture Organisation, Rome.
- FAO (2005a)** FAOSTAT data. Food and Agriculture Organisation, Rome.
<http://faostat.external.fao.org/default.jsp> (accessed July, 2005).
- FAO (2005b)** Global Livestock Production and Health Atlas. Food and Agriculture Organisation, Rome. <http://www.fao.org/ag/aga/glipha/index.jsp> (accessed July, 2005).
- LandScan (2002)** Global Population Database. Oak Ridge National Laboratory, Oakridge. <http://www.ornl.gov/gist/>
- OIE (2004)** HANDISTATUS II. Office International des Epizooties, Paris.
<http://www.oie.int/hs2/> (accessed July, 2005).
- UNDP (2004)**. The Human development Reports, United Nations Development Programme, New York. <http://hdr.undp.org/statistics/>
- World Bank (2002)** The 2002 World Bank development indicators CD-Rom. The World Bank, Washington DC.