

MOZAMBIQUE

Food and Agriculture Organization
of the United Nations • **FAO**

Livestock Information, Sector Analysis
and Policy Branch • **AGAL**



March 2005

TABLE OF CONTENTS

Preface	ii
1. General Information.....	1
Human population, land and socio-economics	1
Human population trends	2
Trends in agricultural land	2
2. Livestock Resources.....	2
Livestock populations	2
Contribution of different species to total livestock units	3
Selected indicators of livestock resources	3
Agro-ecological zones and densities of livestock species (2000)	4
3. Livestock Production	6
Trends in annual production of meat, milk and eggs	6
Composition of total meat production	6
Carcass weights and percentage slaughtered by species.....	7
Milk yields and proportion of dairy animals.....	7
Egg yields and proportion of laying birds.....	7
Estimated feed used for livestock production.....	8
Trends in annual per capita production of meat, milk and eggs.....	8
4. Consumption of Meat, Milk and Eggs	9
Trends in annual consumption of meat, milk and eggs	9
Trends in annual per capita consumption of meat, milk and eggs.....	9
Production versus consumption for meat, milk and eggs (2002)	10
5. Trade in Livestock and Livestock Products.....	11
Trade in agricultural and livestock products.....	11
Export/import 'dependency' for livestock products	11
Trade in live animals	12
Trade in livestock products	13
6. Livestock Health	14
Total number of cases/outbreaks of selected diseases reported in all susceptible species	14
7. References and Further Reading.....	15

Data contained in this Livestock Sector Brief are taken from official sources. Official sources are no guarantee for data accuracy and the figures reported in this brief should be taken as indicative and not be used for official purposes. The Food and Agriculture Organization of the United Nations assumes no responsibility for its accuracy, completeness and coherence.

PREFACE

The Livestock Sector Briefs (LSB) are intended to provide a quick overview and an approximate outlook for the livestock sector of the respective country using figures and quantitative indicators originating from official sources. The LSBs are complemented by a synthesis of policy documents available in the public domain.

The majority of the data in the LSBs refer to the country as a whole and come from FAOSTAT, which is available on the internet (<http://faostat.external.fao.org/default.jsp>). FAO, as part of its mandate, compiles information and data on various aspects of food and agriculture from all countries. The data are analysed and interpreted to support FAO's programmes and activities and, in accordance with the basic functions of the Organization, they are disseminated to the public through publications, CD-ROM, diskettes and the Internet. The country level data are officially submitted to the Division for Statistics of FAO (ESS) by various ministries of the respective countries. For details of data collection procedures see <http://faostat.fao.org/abcdq/about.htm>. The figures submitted often display inconsistencies across ministries, for example reported meat production does not always match reported meat consumption when taking into account imports and exports. FAO tries to reconcile the figures, to the effect that FAO statistics may differ from those originally submitted.

The LSBs utilise FAOSTAT data from the following domains: human population, land use, agriculture production, food supply and agricultural and food trade. These are used to derive a standard set of indicators that can quickly be compared across the countries.

Data on the economy are from the World Bank's World Development Indicators CD-Rom, which is also available online <http://www.worldbank.org/data/> and is updated every year. Animal health data are taken from the Office International des Epizooties (OIE) HANDISTATUS II <http://www.oie.int/hs2/>. These are official data supplied by member nations.

For any feedback and comment, please contact:

Pius Chilonda - Livestock Information Analyst
Livestock Information, Sector Analysis and Policy Branch
Animal Production and Health Division
Food and Agricultural Organisation
Viale delle Terme di Caracalla
00100 Rome, Italy

Tel: 00 39 06 57056691
Fax: 00 39 06 57055749
Email: Pius.Chilonda@fao.org

1. GENERAL INFORMATION

Human population, land and socio-economics

Human population	18.5 million
Population density on total land	23.6 persons/sqkm
Annual growth rate (1990-2000)	2.6 %
Population in agriculture	14.2 million
As proportion of total population	76.4 %
Total land area	784,090 sqkm
Agricultural land	484,350 sqkm
As proportion of total land	61.8 %
Land under pasture	440,000 sqkm
As proportion of total land	90.8 %
Irrigated area	1,070 ha
Agricultural land per 100 people	261 ha
Agricultural land per 100 people in agriculture	342 ha
Agricultural population density on agricultural land	29.2 persons/sqkm
GDP ¹	4,115 million US\$
GDP annual growth rate (1990-2000)	8.1 %
GDP per capita/year ¹	223 US\$
GDP per capita annual growth rate (1990-2000)	5.6 %
Agriculture, GDP	1,204 million US\$
As proportion of total GDP	29.3 %
Livestock, GDP ¹	179 million US\$
As proportion of agricultural GDP	14.8 %
Human development Rank	171 Ranking ²
Human development index	0.354
Poverty incidence ³	
Total	69.4 %
Urban	62.0 %
Rural	71.3 %

¹Constant 1995 US\$ ² The HDI rank is determined using HDI values to the fifth decimal point – from 177 countries, as compiled by the UNDP; ³ National poverty line; na: not available

Source: World Bank (2002); UNDP (2004); FAO (2005a)

Human population trends

Values expressed in 1,000

Population segment	Year				Annual growth rate (%)	
	1980	1990	2000	2002	1980-1990	1990-2000
Total	12,084	13,465	17,861	18,537	1.1	2.9
Rural	10,499	10,623	12,126	12,118	0.1	1.3
Urban	1,584	2,842	5,735	6,419	6.0	7.3

Source: FAO (2005a)

Trends in agricultural¹ land

Values expressed in sqkm

Land type	Year				Annual growth rate (%)	
	1980	1990	2000	2002	1980-1990	1990-2000
Total	471,000	476,800	481,350	484,350	0.1	0.1
Cropped ²	31,000	36,800	41,350	44,350	1.7	1.2
Pastures	440,000	440,000	440,000	440,000	0.0	0.0

¹The sum of area under arable land, permanent crops and permanent pastures

²Arable and permanent crops

Source: FAO (2005a)

2. LIVESTOCK RESOURCES

Livestock populations

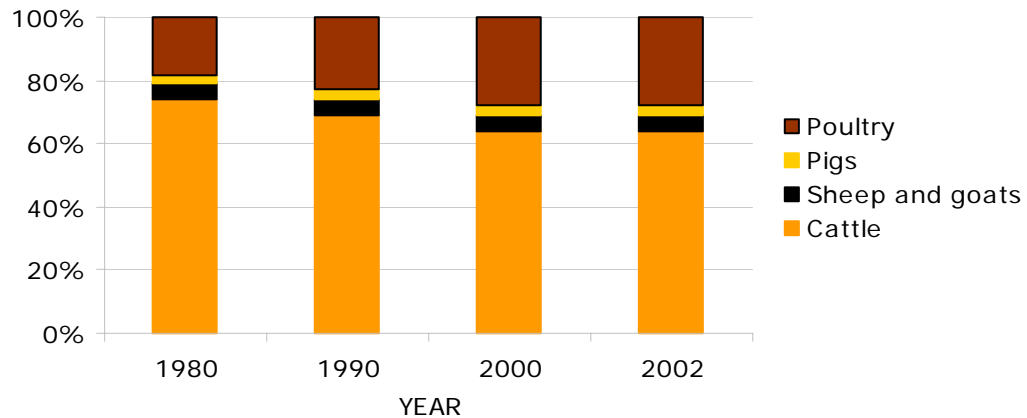
Values expressed in 1,000

Species	Year				Annual growth rate (%)	
	1980	1990	2000	2002	1980-1990	1990-2000
Cattle	1,400	1,380	1,320	1,320	-0.1	-0.4
Sheep and goats	441	506	517	517	1.4	0.2
Pigs	120	170	180	180	3.5	0.6
Poultry	17,560	22,650	28,670	28,670	2.6	2.4
Total LUs	944	1,001	1,034	1,034	0.6	0.3

LU: *Livestock unit*; **conversion factors:** cattle (0.50), sheep and goats (0.10), pigs (0.20) and poultry (0.01)

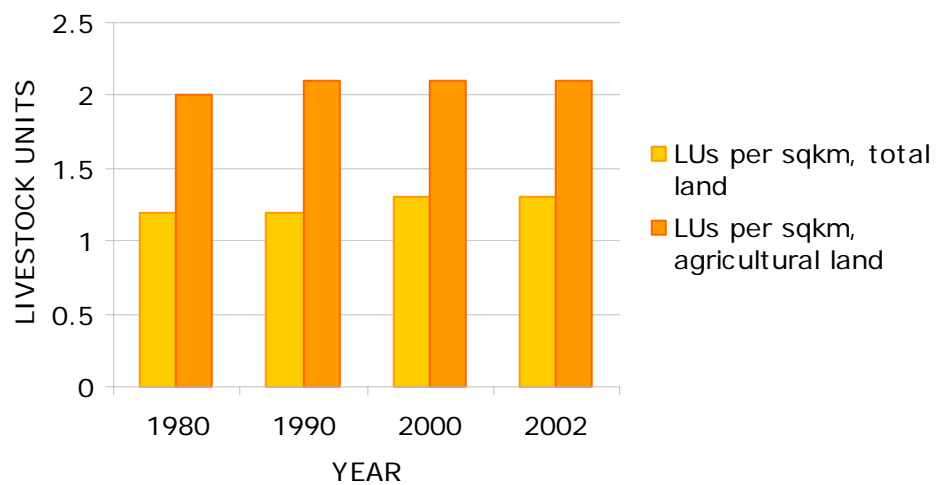
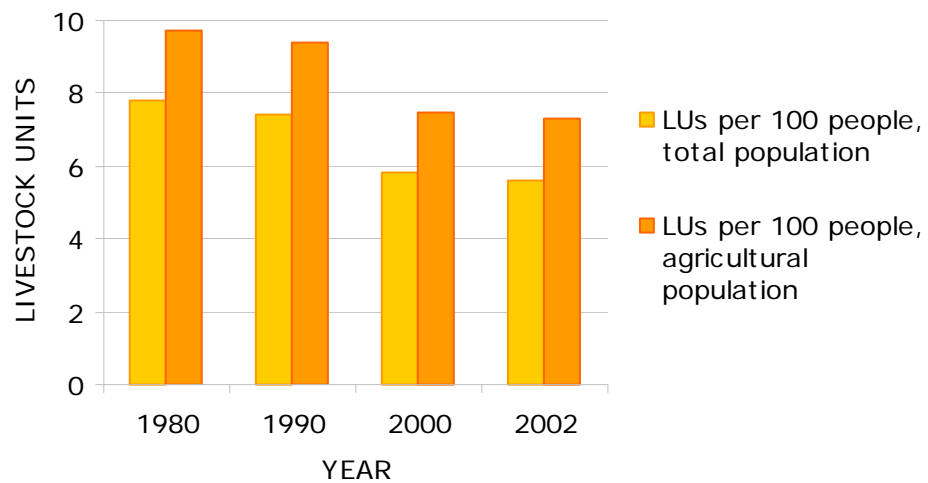
Source: FAO (2005a)

Contribution of different species to total livestock units



Source: FAO (2005a)

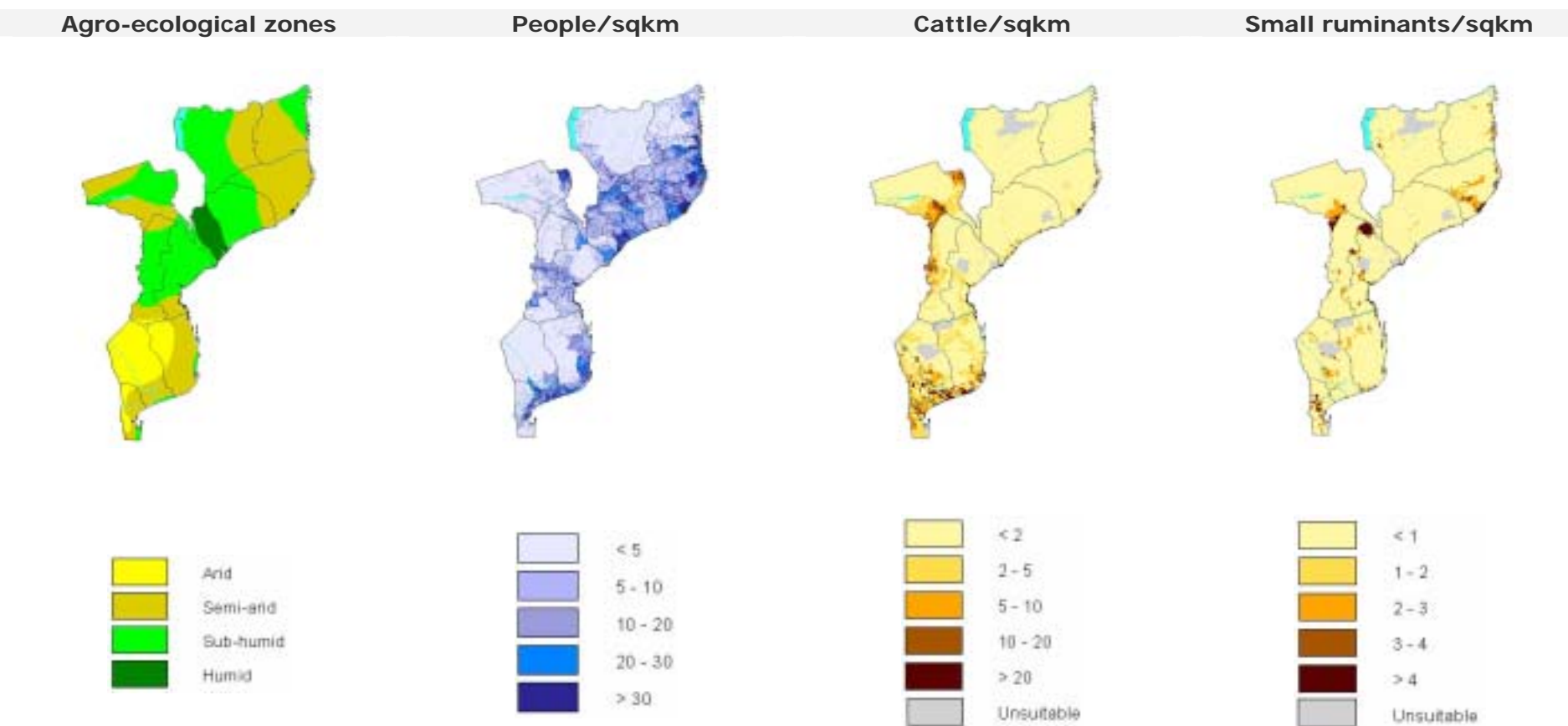
Selected indicators of livestock resources



Source: FAO (2005a)

Agro-ecological zones and densities of livestock species (2000)

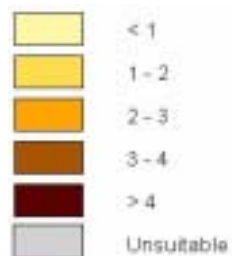
Density calculated on total land area¹



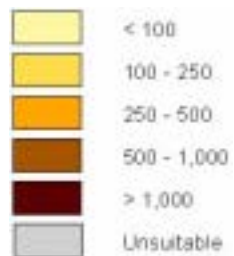
¹Densities for livestock populations and production are based on total land suitable for livestock production

Source: FAO (2001); LandScan (2002), FAO (2005b)

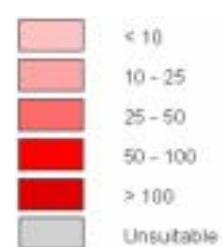
Pigs/sqkm



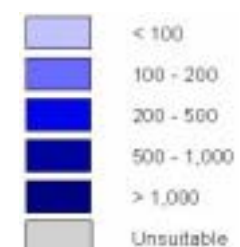
Poultry/sqkm



Beef offtake/sqkm



Milk offtake/sqkm



Source: FAO (2005b); FAO (2003)

3. LIVESTOCK PRODUCTION

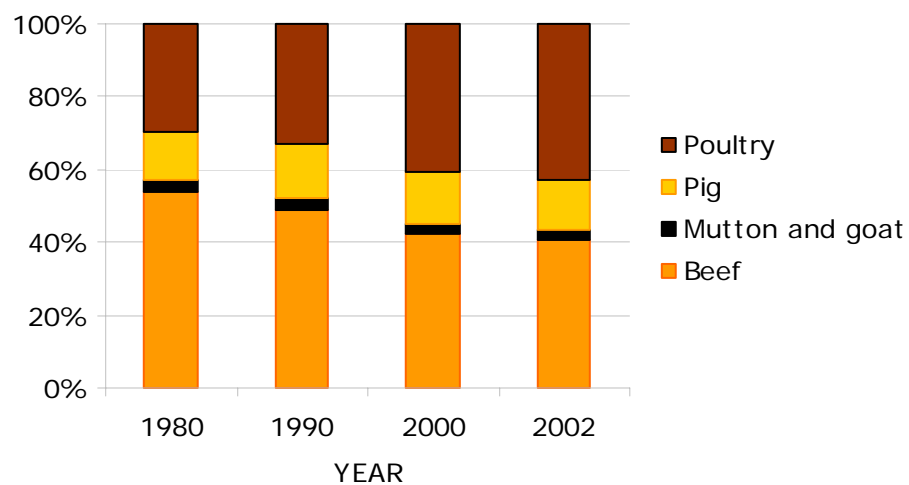
Trends in annual production of meat, milk and eggs

1,000 metric tonnes

Product	Year				Annual growth rate (%)	
	1980	1990	2000	2002	1980-1990	1990-2000
Meat, total	66.6	82.8	90.5	94.1	2.2	0.9
Beef	36.0	40.5	38.1	38.1	1.2	-0.6
Mutton and goat	2.2	2.6	2.7	2.7	1.6	0.4
Pig	8.6	12.4	12.8	12.8	3.7	0.3
Poultry	19.8	27.2	36.8	40.4	3.3	3.1
Milk, total	71.5	71.7	68.6	68.8	0.0	-0.4
Eggs, total	8.8	11.4	14.0	14.0	2.6	2.1

Source: FAO (2005a)

Composition of total meat production



Source: FAO (2005a)

Carcass weights and percentage slaughtered by species

Species/year	Carcass weight (kg/animal)				Percentage slaughtered/year			
	1980	1990	2000	2002	1980	1990	2000	2002
Cattle	150.0	150.0	150.0	150.0	17.1	19.6	19.2	19.2
Sheep	12.0	12.0	12.0	12.0	49.1	52.1	51.2	51.2
Goat	12.0	12.0	12.0	12.0	40.0	40.0	41.3	41.3
Pigs	60.0	60.0	60.0	60.0	120.0	121.8	118.9	118.9
Poultry	0.9	0.9	0.9	0.9	123.9	132.7	141.8	155.8

Source: FAO (2005a)

Milk yields and proportion of dairy animals

Species/year	Milk yield (kg/year)				Percentage milked			
	1980	1990	2000	2002	1980	1990	2000	2002
Cattle	170	170	170	170	27.0	27.0	26.8	26.9

Source: FAO (2005a)

Egg yields and proportion of laying birds

Species/year	Eggs (kg/year)				Percentage laying			
	1980	1990	2000	2002	1980	1990	2000	2002
Chicken	1.3	1.3	1.3	1.3	40.0	40.0	38.6	38.6

Source: FAO (2005a)

Estimated feed used for livestock production

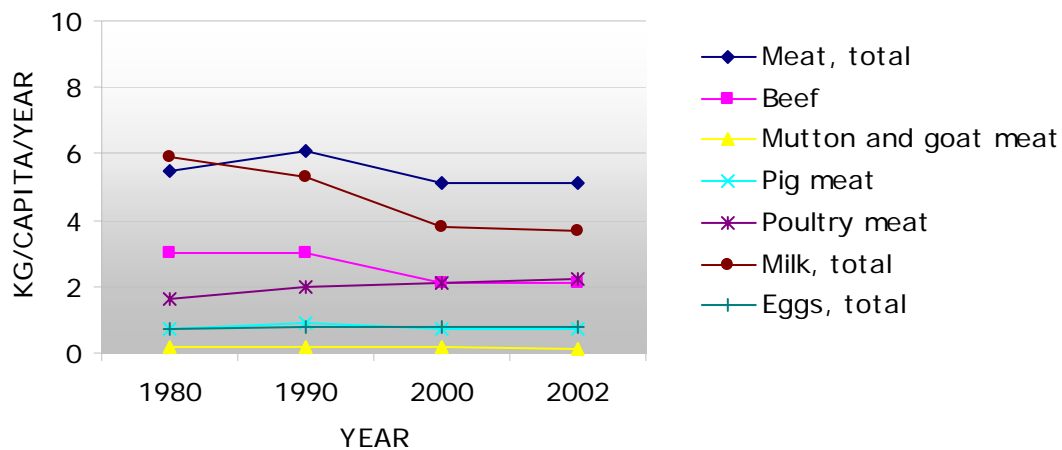
1,000 metric tonnes

Product	Year				Annual growth rate (%)	
	1980	1990	2000	2002	1980-1990	1990-2000
Maize	0.0	50.0	240.0	265.0		17.0
Barley						
Sorghum	6.0	5.3	7.6	9.4	-1.3	3.7
Millet						
Wheat						
Brans	94.4	93.8	189.3	180.8	-0.1	7.3
Rice Paddy, equivalent						
Roots and Tuber, dry equivalent	116.6	148.7	173.7	172.8	2.5	1.6
Pulses						
Oil crops						

Blanks represent no data

Source: FAO (2005a)

Trends in annual per capita production of meat, milk and eggs



Source: FAO (2005a)

4. CONSUMPTION OF MEAT, MILK AND EGGS

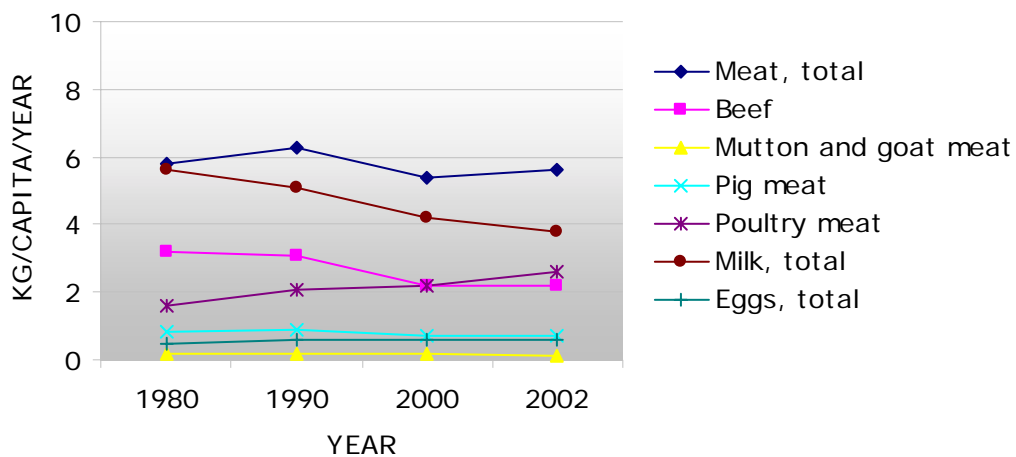
Trends in annual consumption of meat, milk and eggs

1,000 metric tonnes

Product	Year				Annual growth rate (%)	
	1980	1990	2000	2002	1980-1990	1990-2000
Meat, total	69.9	84.6	95.8	104.5	1.9	1.3
Beef	38.6	41.5	40.2	40.0	0.7	-0.3
Sheep and goat	2.2	2.6	2.7	2.7	1.6	0.4
Pig	9.3	12.5	13.2	13.4	3.0	0.6
Poultry	19.8	27.8	39.7	48.3	3.5	3.6
Milk, total	67.9	68.3	75.5	71.3	0.1	1.0
Eggs, total	6.6	8.5	11.0	11.7	2.6	2.6

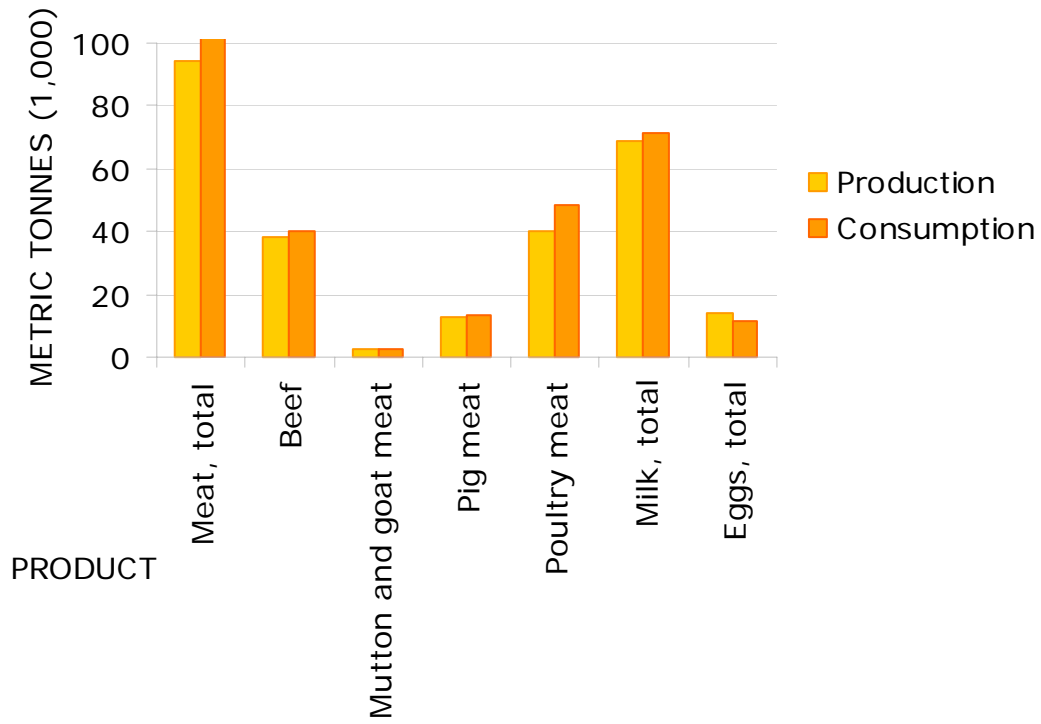
Source: FAO (2005a)

Trends in annual per capita consumption of meat, milk and eggs



Source: FAO (2005a)

Production versus consumption for meat, milk and eggs (2002)



Source: FAO (2005a)

5. TRADE IN LIVESTOCK AND LIVESTOCK PRODUCTS

Trade in agricultural and livestock¹ products

Values in million US\$

Product	Exports				Imports			
	1980	1990	2000	2002	1980	1990	2000	2002
Total	383.0	201.3	474.2	845.9	964.8	888.4	1,433.2	1,375.8
Agricultural	156.9	41.4	62.1	76.3	116.8	211.5	226.2	330.3
% agricultural	41.0	20.6	13.1	9.0	12.1	23.8	15.8	24.0
Livestock	0.5	0.5	0.5	0.1	13.0	13.1	26.1	21.1
% livestock	0.1	0.2	0.1	0.0	1.3	1.5	1.8	1.5

¹Total trade in goods and services expressed in current US\$. Source: World Bank (2002)
Agricultural trade refers to all agricultural products, while livestock trade refers to trade in livestock products and live animals. Source: FAO (2005b)

Export/import 'dependency' for livestock products

Product	Exports as percentage of production				Imports as percentage of consumption			
	1980	1990	2000	2002	1980	1990	2000	2002
Meat, total	0.00	0.00	0.00	0.02	4.36	2.07	5.48	9.22
Beef	0.00	0.00	0.00	0.00	6.73	2.42	5.18	3.05
Sheep and goat	0.00	0.00	0.00	0.63	0.00	0.00	0.00	0.00
Pig	0.00	0.00	0.00	0.02	4.59	0.34	1.99	3.38
Poultry	0.00	0.00	0.00	0.00	0.00	2.16	7.31	16.38
Milk, equivalent	0.00	0.00	0.00	0.01	41.01	29.54	47.66	26.95
Eggs, total	0.00	0.00	0.00	0.00	0.00	1.41	9.09	12.53

Source: FAO (2005a)

Product	Net exports as percentage of production				Net imports as percentage of consumption			
	1980	1990	2000	2002	1980	1990	2000	2002
Meat, total	0.00	0.00	0.00	0.00	4.36	2.07	5.48	9.20
Beef	0.00	0.00	0.00	0.00	6.73	2.42	5.18	3.05
Sheep and goat	0.00	0.00	0.00	0.00	0.00	0.00	0.00	0.00
Pig	0.00	0.00	0.00	0.00	4.59	0.34	1.99	3.35
Poultry	0.00	0.00	0.00	0.00	0.00	2.16	7.31	16.38
Milk, equivalent	0.00	0.00	0.00	0.00	41.01	29.54	47.66	26.94
Eggs, total	0.00	0.00	0.00	0.00	0.00	1.41	9.09	12.53

Source: FAO (2005a)

Trade in live animals

Species	1980			1990			2000			2002		
	Export	Import	Net trade	Export	Import	Net trade	Export	Import	Net trade	Export	Import	Net trade
Quantities (count)												
Cattle	0	0	0	0	265	-265	0	3,000	-3,000	0	1,809	-1,809
Sheep and goats		0	0		0	0		0	0		28	-28
Pigs	0	0	0	0	0	0	0	0	0	0	768	-768
Poultry (1,000)	0	0	0	0	90	-90	0	2,500	-2,500	0	6,784	-6,784
Value (1,000 US\$)												
Cattle	0	0	0	0	50	-50	0	1,100	-1,100	0	833	-833
Sheep and goats		0	0		0	0		0	0		3	-3
Pigs	0	0	0	0	0	0	0	0	0	0	47	-47
Poultry (1,000)	0	0	0	0	130	-130	0	2,700	-2,700	4	1,496	-1,492
Total	0	0	0	0	180	-180	0	3,800	-3,800	4	2,379	-2,375

Net trade: Exports less Imports

Blanks represent no data

Source: FAO (2005a)

Trade in livestock products

Product	1980			1990			2000			2002		
	Export	Import	Net trade	Export	Import	Net trade	Export	Import	Net trade	Export	Import	Net trade
Quantities (metric tonnes)												
Meat, total	0	3,046	-3,046	0	1,755	-1,755	0	5,253	-5,253	20	9,633	-9,613
Beef	0	2,598	-2,598	0	1,005	-1,005	0	2,082	-2,082	0	1,218	-1,218
Mutton and goat	0		0	0		0	0		0	17		17
Pig	0	425	-425	0	43	-43	0	264	-264	3	453	-450
Poultry	0	0	0	0	600	-600	0	2,900	-2,900	0	7,913	-7,913
Other	0	23	-23	0	108	-108	0	7	-7	0	49	-49
Milk, equivalent	0	27,860	-27,860	0	20,176	-20,176	0	35,998	-35,998	7	19,213	-19,207
Eggs, total	0	0	0	0	120	-120	0	1,000	-1,000	0	1,469	-1,469
Hides and skins	1,000	0	1,000	1,000	0	1,000	1,000	0	1,000	149	0	149
Value (1,000 US\$)												
Meat, total	0	6,720	-6,720	0	6,060	-6,060	0	7,670	-7,670	57	11,643	-11,586
Beef	0	4,920	-4,920	0	1,780	-1,780	0	3,450	-3,450	0	1,490	-1,490
Mutton and goat	0		0	0		0	0		0	54		54
Pig	0	1,800	-1,800	0	180	-180	0	620	-620	3	722	-719
Poultry	0	0	0	0	1,100	-1,100	0	3,600	-3,600	0	9,409	-9,409
Other	0	0	0	0	3,000	-3,000	0	0	0	0	22	-22
Milk, equivalent	0	6,300	-6,300	0	6,740	-6,740	0	13,000	-13,000	2	5,627	-5,625
Eggs, total	0	0	0	0	140	-140	0	1,600	-1,600	0	1,404	-1,404
Hides and skins	500	0	500	500	0	500	500	0	500	77	2	75
Total	500	13,020	-12,520	500	12,940	-12,440	500	22,270	-21,770	136	18,676	-18,540

Net trade: Exports less Imports

Blanks represent no data

Source: FAO (2005a)

6. LIVESTOCK HEALTH

Total number of cases/outbreaks of selected diseases reported in all susceptible species

Disease	1997	1998	1999	2000	2001	2002	2003
African swine fever	66/2	1,113/4	.../...	3,357/8	4,830/8	2,210/5	2,447/6
Avian Influenza ¹			000	000	000	000	000
Bluetongue		(12/1995)	(12/1995)	(12/1995)	(12/1995)	(12/1995)	(12/1995)
BSE ²		-	
CBPP ³	000	000	000	000	000	000	000
Classical swine fever	000	000	000	000	000	000	000
Foot and mouth disease	(1985)	(1985)	(1985)	(1985)	(1985)	4,925/9	.../17
Lumpy skin disease	2,011/5	404/6	.../2	298/11	.../20	50/2	32/5
Newcastle disease	63,214/6	38,113/6	.../8	818/3	.../9	20,252/6	1,475/7
Peste des petits ruminants	000	000	000	000	000	000	000
Rift Valley fever	.../...	(1997)		...			(03/1963)
Rinderpest	(1896)	(1896)	(1896)	(1896)	(1896)	(1896)	(1896)
Sheep and goat pox	-	-	-	-	-	-	-
Swine vesicular disease	000	000	000	000	000	000	000
Vesicular stomatitis	000	000	000	000	000	000	000

¹ Highly pathogenic avian influenza

² Bovine spongiform encephalopathy

³ Contagious bovine pleuropneumonia

no./no. number of cases/outbreaks, ... no information, - disease not reported, 000 disease never reported; (month/year) date of the last reported occurrence of the disease in previous years

Source: OIE (2004)

7. REFERENCES AND FURTHER READING

FAO (2001) Agro-ecological Distributions for Africa, Asia and North and Central America, Consultants' Report. Food and Agriculture Organisation, Rome.

FAO (2003) Cattle and small ruminant production systems in sub-Saharan Africa: a systematic review. Food and Agriculture Organisation, Rome.

FAO (2005a) FAOSTAT data. Food and Agriculture Organisation, Rome.
<http://faostat.external.fao.org/default.jsp> (accessed March, 2005).

FAO (2005b) Global Livestock Production and Health Atlas. Food and Agriculture Organisation, Rome. <http://www.fao.org/ag/aga/glipha/index.jsp> (accessed March, 2005).

LandScan (2002) Global Population Database. Oak Ridge National Laboratory, Oakridge. <http://www.ornl.gov/gist/>

OIE (2004) HANDISTATUS II. Office International des Epizooties, Paris.
<http://www.oie.int/hs2/> (accessed March, 2005).

UNDP (2004). The Human development Reports, United Nations Development Programme, New York. <http://hdr.undp.org/statistics/>

World Bank (2002) The 2002 World Bank development indicators CD-Rom. The World Bank, Washington DC.