

LIVESTOCK SECTOR BRIEF

MALAWI

Food and Agriculture Organization
of the United Nations • **FAO**

Livestock Information, Sector Analysis
and Policy Branch • **AGAL**



March 2005

TABLE OF CONTENTS

Preface	ii
1. General Information.....	1
Human population, land and socio-economics	1
Human population trends	2
Trends in agricultural land	2
2. Livestock Resources.....	2
Livestock populations	2
Contribution of different species to total livestock units	3
Selected indicators of livestock resources	3
Agro-ecological zones and densities of livestock species (2000)	4
3. Livestock Production	6
Trends in annual production of meat, milk and eggs	6
Composition of total meat production	6
Carcass weights and percentage slaughtered by species.....	7
Milk yields and proportion of dairy animals.....	7
Egg yields and proportion of laying birds.....	7
Estimated feed used for livestock production.....	8
Trends in annual per capita production of meat, milk and eggs.....	8
4. Consumption of Meat, Milk and Eggs	9
Trends in annual consumption of meat, milk and eggs	9
Trends in annual per capita consumption of meat, milk and eggs.....	9
Production versus consumption for meat, milk and eggs (2002)	10
5. Trade in Livestock and Livestock Products.....	11
Trade in agricultural and livestock products.....	11
Export/import 'dependency' for livestock products	11
Trade in live animals	12
Trade in livestock products	13
6. Livestock Health	14
Total number of cases/outbreaks of selected diseases reported in all susceptible species	14
7. References and Further Reading.....	15

Data contained in this Livestock Sector Brief are taken from official sources. Official sources are no guarantee for data accuracy and the figures reported in this brief should be taken as indicative and not be used for official purposes. The Food and Agriculture Organization of the United Nations assumes no responsibility for its accuracy, completeness and coherence.

PREFACE

The Livestock Sector Briefs (LSB) are intended to provide a quick overview and an approximate outlook for the livestock sector of the respective country using figures and quantitative indicators originating from official sources. The LSBs are complemented by a synthesis of policy documents available in the public domain.

The majority of the data in the LSBs refer to the country as a whole and come from FAOSTAT, which is available on the internet (<http://faostat.external.fao.org/default.jsp>). FAO, as part of its mandate, compiles information and data on various aspects of food and agriculture from all countries. The data are analysed and interpreted to support FAO's programmes and activities and, in accordance with the basic functions of the Organization, they are disseminated to the public through publications, CD-ROM, diskettes and the Internet. The country level data are officially submitted to the Division for Statistics of FAO (ESS) by various ministries of the respective countries. For details of data collection procedures see <http://faostat.fao.org/abcdq/about.htm>. The figures submitted often display inconsistencies across ministries, for example reported meat production does not always match reported meat consumption when taking into account imports and exports. FAO tries to reconcile the figures, to the effect that FAO statistics may differ from those originally submitted.

The LSBs utilise FAOSTAT data from the following domains: human population, land use, agriculture production, food supply and agricultural and food trade. These are used to derive a standard set of indicators that can quickly be compared across the countries.

Data on the economy are from the World Bank's World Development Indicators CD-Rom, which is also available online <http://www.worldbank.org/data/> and is updated every year. Animal health data are taken from the Office International des Epizooties (OIE) HANDISTATUS II <http://www.oie.int/hs2/>. These are official data supplied by member nations.

For any feedback and comment, please contact:

Pius Chilonda - Livestock Information Analyst
Livestock Information, Sector Analysis and Policy Branch
Animal Production and Health Division
Food and Agricultural Organisation
Viale delle Terme di Caracalla
00100 Rome, Italy

Tel: 00 39 06 57056691
Fax: 00 39 06 57055749
Email: Pius.Chilonda@fao.org

1. GENERAL INFORMATION

Human population, land and socio-economics

Human population	11.9 million
Population density on total land	126.2 persons/sqkm
Annual growth rate (1990-2000)	1.9 %
Population in agriculture	9.1 million
As proportion of total population	76.6 %
Total land area	94,080 sqkm
Agricultural land	42,900 sqkm
As proportion of total land	45.6 %
Land under pasture	18,500 sqkm
As proportion of total land	43.1 %
Irrigated area	300 ha
Agricultural land per 100 people	36 ha
Agricultural land per 100 people in agriculture	47 ha
Agricultural population density on agricultural land	212.1 persons/sqkm
GDP ¹	1,687 million US\$
GDP annual growth rate (1990-2000)	3.1 %
GDP per capita/year ¹	157 US\$
GDP per capita annual growth rate (1990-2000)	1.0 %
Agriculture, GDP	562 million US\$
As proportion of total GDP	33.3 %
Livestock, GDP ¹	55 million US\$
As proportion of agricultural GDP	9.9 %
Human development Rank	165 Ranking ²
Human development index	0.388
Poverty incidence ³	
Total	65.3 %
Urban	54.9 %
Rural	66.5 %

¹Constant 1995 US\$ ²The HDI rank is determined using HDI values to the fifth decimal point – from 177 countries, as compiled by the UNDP; ³National poverty line; na: not available

Source: World Bank (2002); UNDP (2004); FAO (2005a)

Human population trends

Values expressed in 1,000

Population segment	Year				Annual growth rate (%)	
	1980	1990	2000	2002	1980-1990	1990-2000
Total	6,183	9,456	11,370	11,871	4.3	1.9
Rural	5,621	8,355	9,655	9,992	4.0	1.5
Urban	562	1,101	1,716	1,879	7.0	4.5

Source: FAO (2005a)

Trends in agricultural¹ land

Values expressed in sqkm

Land type	Year				Annual growth rate (%)	
	1980	1990	2000	2002	1980-1990	1990-2000
Total	34,400	37,700	40,900	42,900	0.9	0.8
Cropped ²	16,000	19,300	22,400	24,400	1.9	1.5
Pastures	18,400	18,400	18,500	18,500	0.0	0.1

¹The sum of area under arable land, permanent crops and permanent pastures

²Arable and permanent crops

Source: FAO (2005a)

2. LIVESTOCK RESOURCES

Livestock populations

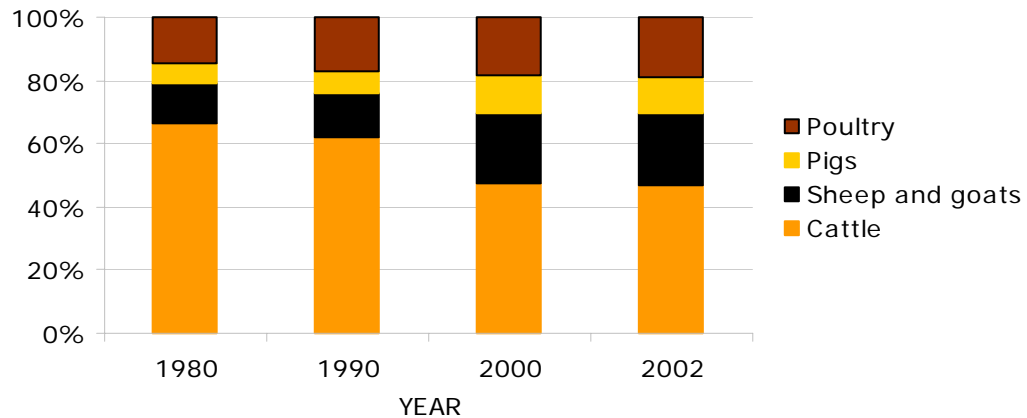
Values expressed in 1,000

Species	Year				Annual growth rate (%)	
	1980	1990	2000	2002	1980-1990	1990-2000
Cattle	790	839	764	750	0.6	-0.9
Sheep and goats	739	938	1,801	1,815	2.4	6.7
Pigs	197	233	468	456	1.7	7.2
Poultry	8,600	11,500	15,000	15,200	2.9	2.7
Total LUs	594	675	806	800	1.3	1.8

LU: *Livestock unit*; **conversion factors:** cattle (0.50), sheep and goats (0.10), pigs (0.20) and poultry (0.01)

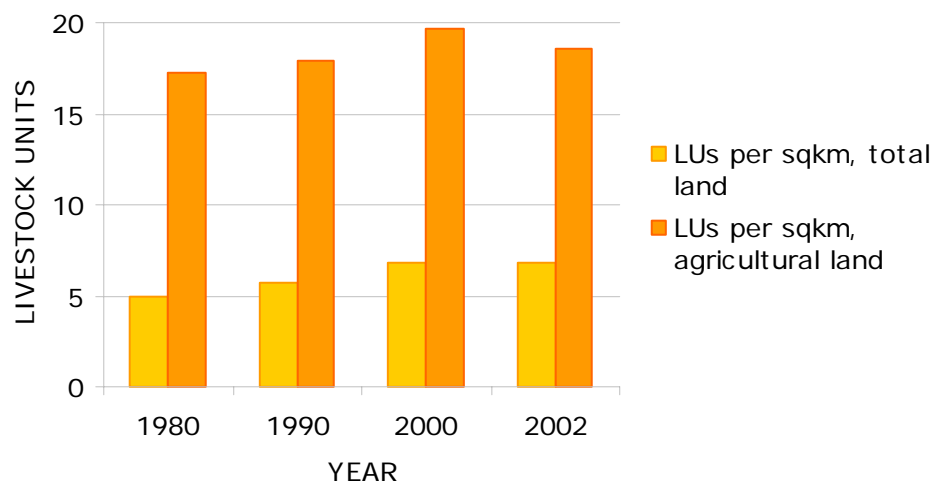
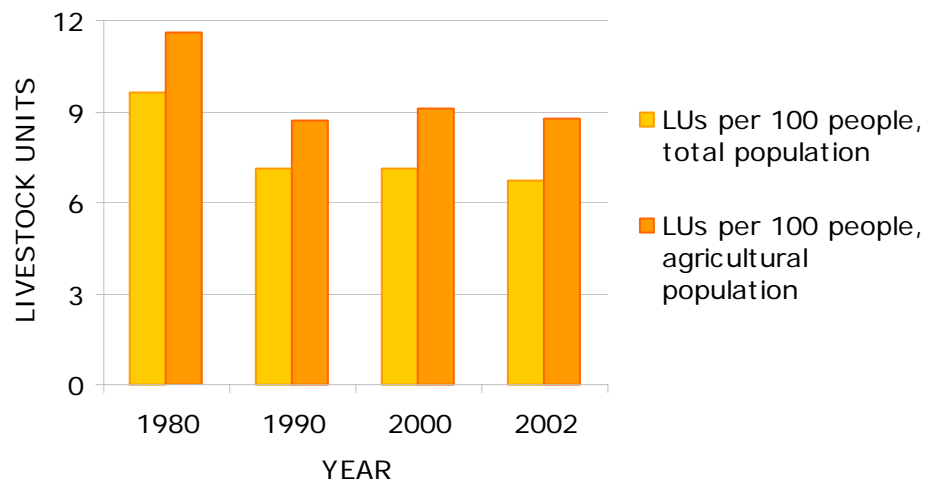
Source: FAO (2005a)

Contribution of different species to total livestock units



Source: FAO (2005a)

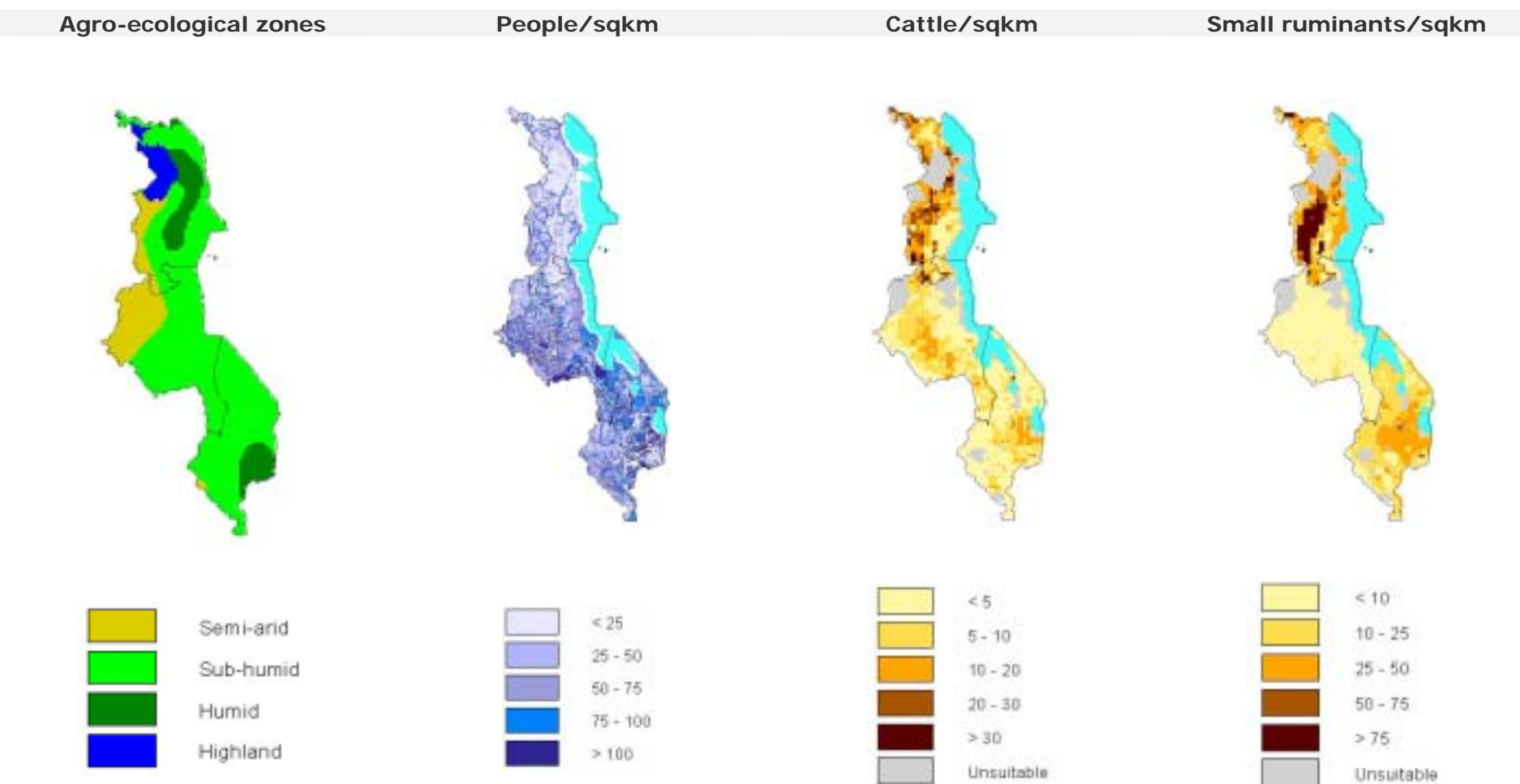
Selected indicators of livestock resources



Source: FAO (2005a)

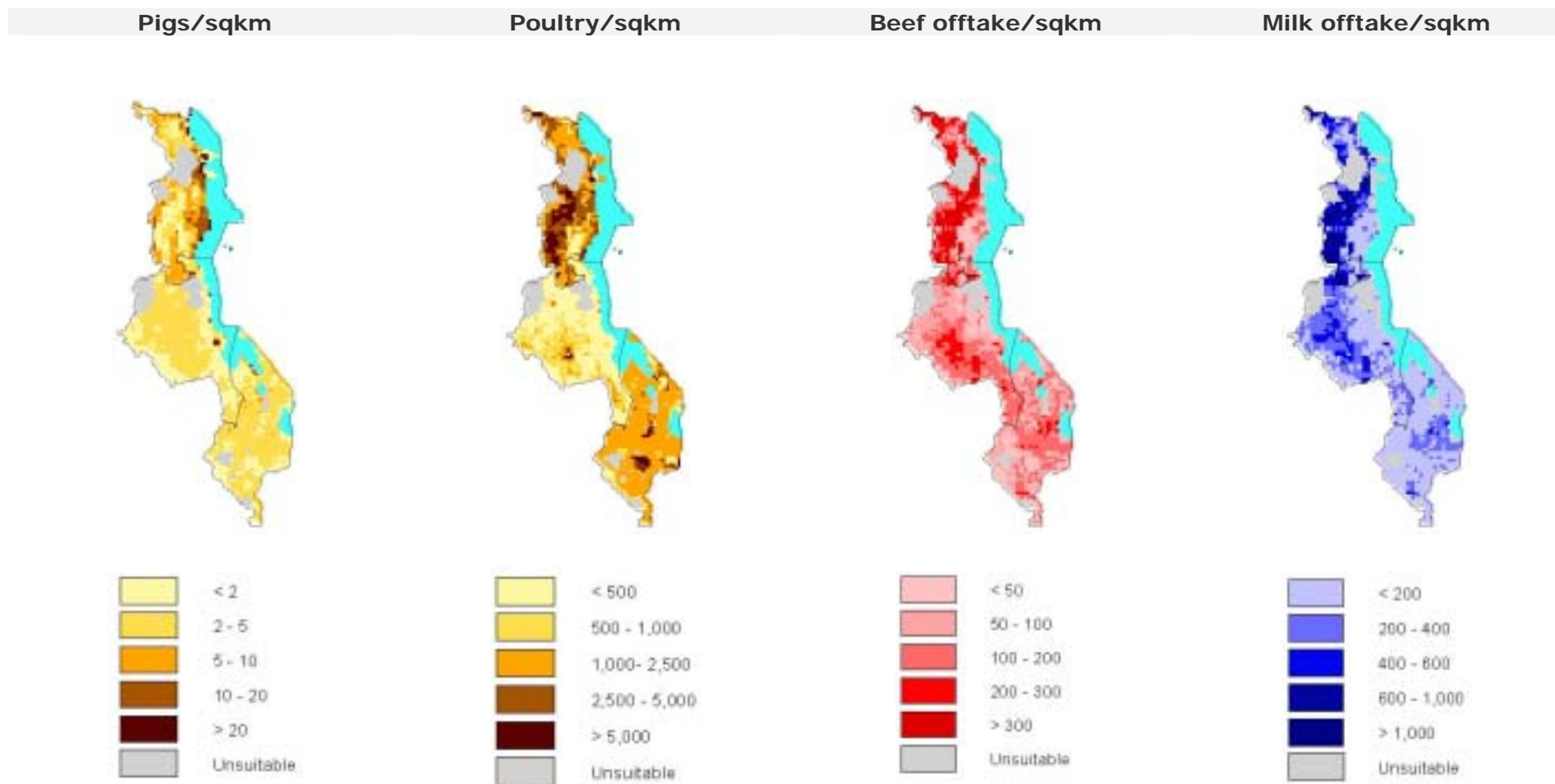
Agro-ecological zones and densities of livestock species (2000)

Density calculated on total land area¹



¹Densities for livestock populations and production are based on total land suitable for livestock production

Source: FAO (2001); LandScan (2002), FAO (2005b)



Source: FAO (2005b); FAO (2003)

3. LIVESTOCK PRODUCTION

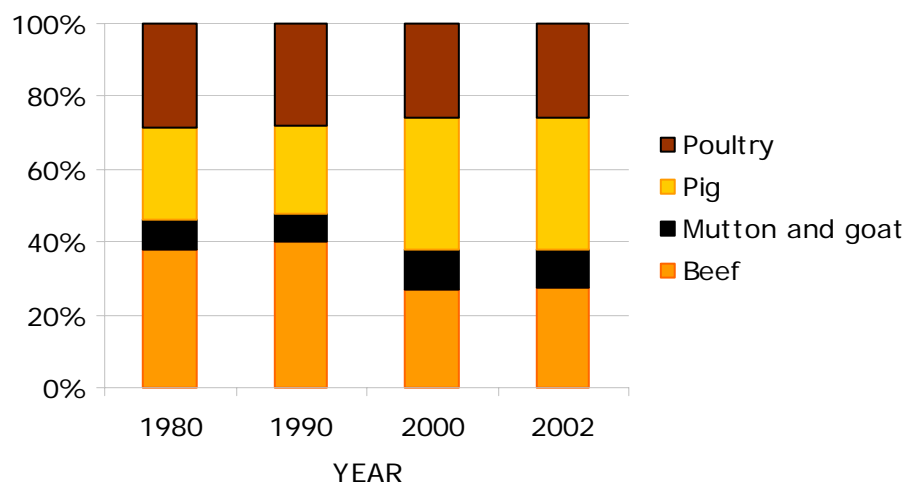
Trends in annual production of meat, milk and eggs

1,000 metric tonnes

Product	Year				Annual growth rate (%)	
	1980	1990	2000	2002	1980-1990	1990-2000
Meat, total	31.4	42.2	59.2	58.7	3.0	3.4
Beef	11.8	16.9	16.0	16.0	3.6	-0.5
Mutton and goat	2.7	3.4	6.5	6.4	2.4	6.7
Pig	7.9	10.2	21.5	21.0	2.7	7.7
Poultry	9.0	11.8	15.3	15.3	2.8	2.7
Milk, total	33.9	36.8	35.0	35.0	0.8	-0.5
Eggs, total	11.2	15.0	19.5	19.5	3.0	2.7

Source: FAO (2005a)

Composition of total meat production



Source: FAO (2005a)

Carcass weights and percentage slaughtered by species

Species/year	Carcass weight (kg/animal)				Percentage slaughtered/year			
	1980	1990	2000	2002	1980	1990	2000	2002
Cattle	150.0	202.0	205.0	205.0	10.0	10.0	10.2	10.4
Sheep	14.0	14.0	14.0	14.0	25.1	24.9	24.8	25.0
Goat	12.0	12.0	12.0	12.0	30.0	30.0	30.0	29.5
Pigs	50.0	50.0	50.0	50.0	80.0	87.9	91.9	92.0
Poultry	0.8	0.8	0.8	0.8	130.2	127.8	127.3	125.7

Source: FAO (2005a)

Milk yields and proportion of dairy animals

Species/year	Milk yield (kg/year)				Percentage milked			
	1980	1990	2000	2002	1980	1990	2000	2002
Cattle	459	460	461	461	9.3	9.5	10.0	10.1

Source: FAO (2005a)

Egg yields and proportion of laying birds

Species/year	Eggs (kg/year)				Percentage laying			
	1980	1990	2000	2002	1980	1990	2000	2002
Chicken	2.6	2.6	2.6	2.6	50.0	50.0	50.0	49.3

Source: FAO (2005a)

Estimated feed used for livestock production

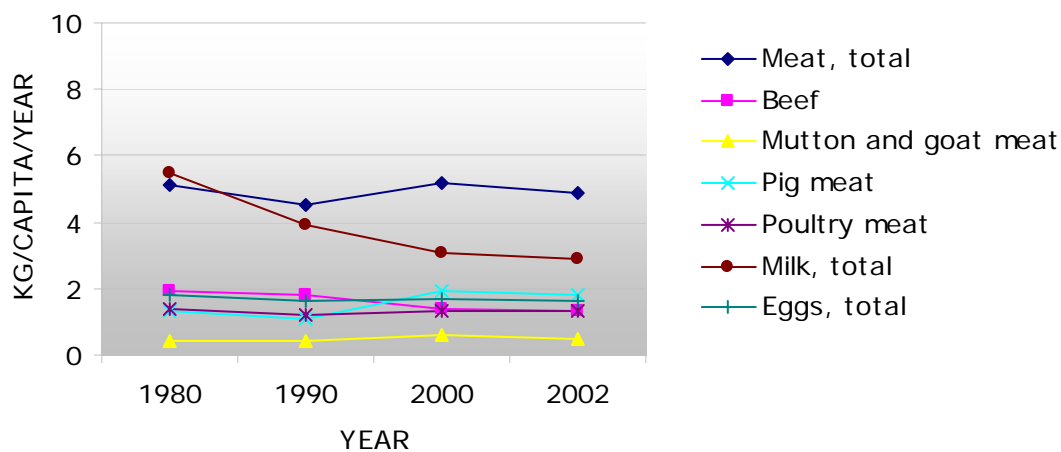
1,000 metric tonnes

Product	Year				Annual growth rate (%)	
	1980	1990	2000	2002	1980-1990	1990-2000
Maize	100.0	70.0	250.0	250.0	-3.5	13.6
Barley						
Sorghum	1.5	0.9	1.9	2.0	-5.3	7.9
Millet	0.4	0.5	1.0	1.0	3.8	6.8
Wheat						
Brans	88.8	119.8	134.7	149.3	3.0	1.2
Rice Paddy, equivalent						
Roots and Tuber, dry equivalent	2.0	2.2	374.0	147.0	1.0	67.1
Pulses	5.0	5.2	5.6	5.6	0.2	0.8
Oil crops	0.0	5.4	0.0	7.8		-100.0

Blanks represent no data

Source: FAO (2005a)

Trends in annual per capita production of meat, milk and eggs



Source: FAO (2005a)

4. CONSUMPTION OF MEAT, MILK AND EGGS

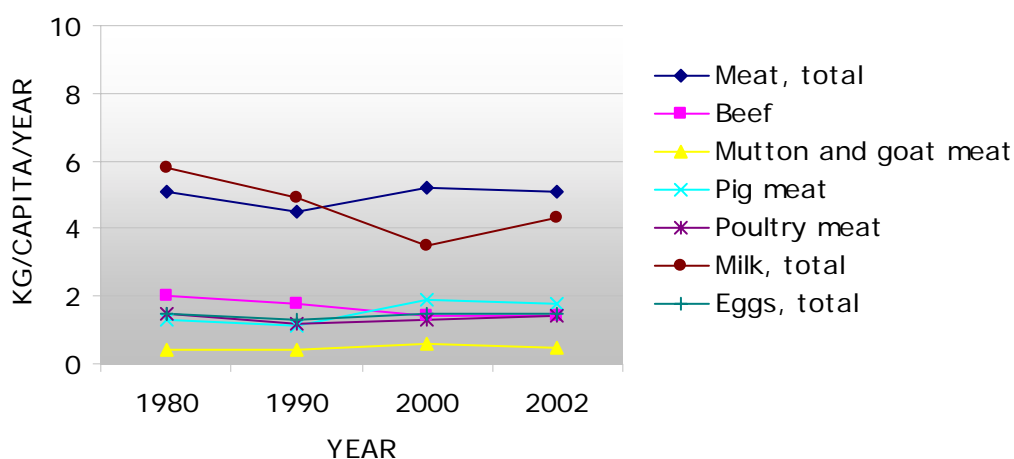
Trends in annual consumption of meat, milk and eggs

1,000 metric tonnes

Product	Year				Annual growth rate (%)	
	1980	1990	2000	2002	1980-1990	1990-2000
Meat, total	31.6	42.4	59.3	60.1	3.0	3.4
Beef	12.1	17.0	16.0	16.5	3.5	-0.6
Sheep and goat	2.7	3.4	6.5	6.4	2.3	6.7
Pig	7.9	10.3	21.5	21.1	2.7	7.6
Poultry	9.0	11.8	15.3	16.1	2.7	2.6
Milk, total	36.0	46.0	39.2	51.1	2.5	-1.6
Eggs, total	9.4	12.6	16.5	17.5	3.0	2.8

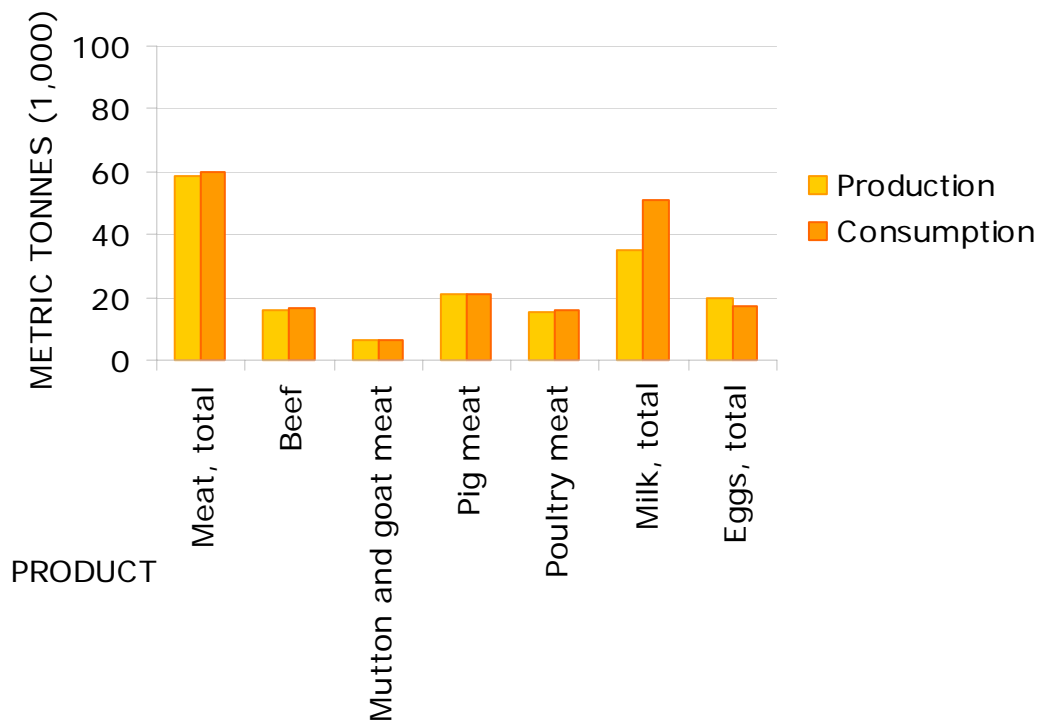
Source: FAO (2005a)

Trends in annual per capita consumption of meat, milk and eggs



Source: FAO (2005a)

Production versus consumption for meat, milk and eggs (2002)



Source: FAO (2005a)

5. TRADE IN LIVESTOCK AND LIVESTOCK PRODUCTS

Trade in agricultural and livestock¹ products

Values in million US\$

Product	Exports				Imports			
	1980	1990	2000	2002	1980	1990	2000	2002
Total	307.5	447.3	446.4	476.7	480.2	628.6	657.2	821.8
Agricultural	250.9	376.5	441.8	383.9	34.4	72.7	38.6	137.2
% agricultural	81.6	84.2	99.0	80.5	7.2	11.6	5.9	16.7
Livestock	0.8	1.1	0.0	0.5	6.9	5.6	3.4	10.7
% livestock	0.2	0.2	0.0	0.1	1.4	0.9	0.5	1.3

¹Total trade in goods and services expressed in current US\$. Source: World Bank (2002)
Agricultural trade refers to all agricultural products, while livestock trade refers to trade in livestock products and live animals. Source: FAO (2005b)

Export/import 'dependency' for livestock products

Product	Exports as percentage of production				Imports as percentage of consumption			
	1980	1990	2000	2002	1980	1990	2000	2002
Meat, total	0.00	0.00	0.00	0.00	0.59	0.40	0.06	2.16
Beef	0.00	0.00	0.00	0.00	1.02	0.66	0.24	2.71
Sheep and goat	0.00	0.00	0.00	0.00	1.30	0.00	0.00	0.05
Pig	0.00	0.00	0.00	0.00	0.09	0.45	0.00	0.31
Poultry	0.00	0.00	0.00	0.00	0.2	0.05	0.00	4.86
Milk, equivalent	0.00	0.00	0.00	0.35	59.8	28.38	20.96	52.74
Eggs, total	0.00	0.00	0.00	0.00	0.00	0.00	1.15	7.27

Source: FAO (2005a)

Product	Net exports as percentage of production				Net imports as percentage of consumption			
	1980	1990	2000	2002	1980	1990	2000	2002
Meat, total	0.00	0.00	0.00	0.00	0.59	0.40	0.06	2.16
Beef	0.00	0.00	0.00	0.00	1.02	0.66	0.24	2.71
Sheep and goat	0.00	0.00	0.00	0.00	0.00	0.00	0.00	0.00
Pig	0.00	0.00	0.00	0.00	0.09	0.45	0.00	0.31
Poultry	0.00	0.00	0.00	0.00	0.20	0.05	0.00	4.86
Milk, equivalent	0.00	0.00	0.00	0.00	59.8	28.38	20.96	52.5
Eggs, total	0.00	0.00	0.00	0.00	0.00	0.00	1.15	7.27

Source: FAO (2005a)

Trade in live animals

Species	1980			1990			2000			2002		
	Export	Import	Net trade	Export	Import	Net trade	Export	Import	Net trade	Export	Import	Net trade
Quantities (count)												
Cattle	0	0	0	0	14	-14	0	0	0	0	165	-165
Sheep and goats	0	0	0	0	0	0	0	0	0	0	17	-17
Pigs	0	0	0	0	0	0	0	0	0	0	6	-6
Poultry (1,000)	29	444	-415	0	342	-342	0	0	0	0	174	-174
Value (1,000 US\$)												
Cattle	0	0	0	0	29	-29	0	0	0	0	127	-127
Sheep and goats		0	0		0	0		0	0		4	-4
Pigs	0	0	0	0	0	0	0	0	0	0	1	-1
Poultry (1,000)	16	221	-205	0	221	-221	0	0	0	0	154	-154
Total	16	221	-205	0	250	-250	0	0	0	0	286	-286

Net trade: Exports less Imports

Blanks represent no data

Source: FAO (2005a)

Trade in livestock products

Product	1980			1990			2000			2002		
	Export	Import	Net trade	Export	Import	Net trade	Export	Import	Net trade	Export	Import	Net trade
Quantities (metric tonnes)												
Meat, total	0	188	-188	0	168	-168	0	38	-38	0	1,296	-1,296
Beef	0	123	-123	0	112	-112	0	38	-38	0	446	-446
Mutton and goat		35	-35		0	0		0	0		3	-3
Pig	0	7	-7	0	46	-46	0	0	0	0	65	-65
Poultry	0	18	-18	0	6	-6	0	0	0	0	780	-780
Other	0	5	-5	0	3	-3	0	0	0	0	2	-2
Milk, equivalent	0	21,524	-21,524	0	13,052	-13,052	0	8,222	-8,222	122	26,946	-26,825
Eggs, total	0	0	0	0	0	0	0	190	-190	0	1,274	-1,274
Hides and skins	562	20	542	649	0	649	36	0	36	291	1	290
Value (1,000 US\$)												
Meat, total	0	397	-397	0	189	-189	0	50	-50	0	1,330	-1,330
Beef	0	257	-257	0	60	-60	0	50	-50	0	406	-406
Mutton and goat		77	-77		0	0		0	0		7	-7
Pig	0	21	-21	0	95	-95	0	0	0	0	123	-123
Poultry	0	42	-42	0	19	-19	0	0	0	0	792	-792
Other	0	0	0	0	15	-15	0	0	0	0	2	-2
Milk, equivalent	0	6,283	-6,283	0	5,186	-5,186	0	3,289	-3,289	8	6,326	-6,318
Eggs, total	0	0	0	0	0	0	0	80	-80	0	2,710	-2,710
Hides and skins	741	34	707	1,097	1	1,096	43	0	43	513	13	500
Total	741	6,714	-5,973	1,097	5,376	-4,279	43	3,419	-3,376	521	10,379	-9,858

Net trade: Exports less Imports

Blanks represent no data

Source: FAO (2005a)

6. LIVESTOCK HEALTH

Total number of cases/outbreaks of selected diseases reported in all susceptible species

Disease	1997	1998	1999	2000	2001	2002	2003
African swine fever	384/9	1,109/17	1,169/3	3,427/23	4,279/41	593/16	35/9
Avian Influenza ¹	000	000	000	000	000	000	000
Bluetongue					.../...	.../...	
BSE ²	000	000	000	000	000	000	
CBPP ³	000	000	000	000	000	000	000
Classical swine fever	000	000	000	000	000	000	000
Foot and mouth disease	(06/1986)	425/1	(12/1998)	804/3	73/1	.../...	7,473/2
Lumpy skin disease	60/13	7,392/74	2,119/101	252/59	2,509/29	162/13	195/10
Newcastle disease	2,552/35	8,467/19	1,448/44	9,892/36	.../...	594/12	84,600/6
Peste des petits ruminants	000	000	000	000	000	000	000
Rift Valley fever						.../...	
Rinderpest	000	000	000	000	000	000	000
Sheep and goat pox	000	000	000	000	000	000	000
Swine vesicular disease	000	000	000	000	000	000	000
Vesicular stomatitis	000	000	000	000	000	000	000

¹ Highly pathogenic avian influenza

² Bovine spongiform encephalopathy

³ Contagious bovine pleuropneumonia

no./no. number of cases/outbreaks, ... no information, - disease not reported, 000 disease never reported; (month/year) date of the last reported occurrence of the disease in previous years

Source: OIE (2004)

7. REFERENCES AND FURTHER READING

FAO (2001) Agro-ecological Distributions for Africa, Asia and North and Central America, Consultants' Report. Food and Agriculture Organisation, Rome.

FAO (2003) Cattle and small ruminant production systems in sub-Saharan Africa: a systematic review. Food and Agriculture Organisation, Rome.

FAO (2005a) FAOSTAT data. Food and Agriculture Organisation, Rome.
<http://faostat.external.fao.org/default.jsp> (accessed March, 2005).

FAO (2005b) Global Livestock Production and Health Atlas. Food and Agriculture Organisation, Rome. <http://www.fao.org/ag/aga/glipha/index.jsp> (accessed March, 2005).

LandScan (2002) Global Population Database. Oak Ridge National Laboratory, Oakridge. <http://www.ornl.gov/gist/>

OIE (2004) HANDISTATUS II. Office International des Epizooties, Paris.
<http://www.oie.int/hs2/> (accessed March, 2005).

UNDP (2004). The Human development Reports, United Nations Development Programme, New York. <http://hdr.undp.org/statistics/>

World Bank (2002) The 2002 World Bank development indicators CD-Rom. The World Bank, Washington DC.