

LIVESTOCK SECTOR BRIEF

NIGERIA

Food and Agriculture Organization
of the United Nations • **FAO**

Livestock Information, Sector Analysis
and Policy Branch • **AGAL**



March 2005

TABLE OF CONTENTS

Preface	ii
1. General Information.....	1
Human population, land and socio-economics	1
Human population trends	2
Trends in agricultural land	2
2. Livestock Resources.....	2
Livestock populations	2
Contribution of different species to total livestock units	3
Selected indicators of livestock resources	3
Agro-ecological zones and densities of livestock species (2000)	4
3. Livestock Production	6
Trends in annual production of meat, milk and eggs	6
Composition of total meat production	6
Carcass weights and percentage slaughtered by species.....	7
Milk yields and proportion of dairy animals.....	7
Egg yields and proportion of laying birds.....	7
Estimated feed used for livestock production.....	8
Trends in annual per capita production of meat, milk and eggs.....	8
4. Consumption of Meat, Milk and Eggs	9
Trends in annual consumption of meat, milk and eggs	9
Trends in annual per capita consumption of meat, milk and eggs.....	9
Production versus consumption for meat, milk and eggs (2002)	10
5. Trade in Livestock and Livestock Products.....	11
Trade in agricultural and livestock products.....	11
Export/import 'dependency' for livestock products	11
Trade in live animals	12
Trade in livestock products	13
6. Livestock Health	14
Total number of cases/outbreaks of selected diseases reported in all susceptible species	14
7. References and Further Reading.....	15

Data contained in this Livestock Sector Brief are taken from official sources. Official sources are no guarantee for data accuracy and the figures reported in this brief should be taken as indicative and not be used for official purposes. The Food and Agriculture Organization of the United Nations assumes no responsibility for its accuracy, completeness and coherence.

PREFACE

The Livestock Sector Briefs (LSB) are intended to provide a quick overview and an approximate outlook for the livestock sector of the respective country using figures and quantitative indicators originating from official sources. The LSBs are complemented by a synthesis of policy documents available in the public domain.

The majority of the data in the LSBs refer to the country as a whole and come from FAOSTAT, which is available on the internet (<http://faostat.external.fao.org/default.jsp>). FAO, as part of its mandate, compiles information and data on various aspects of food and agriculture from all countries. The data are analysed and interpreted to support FAO's programmes and activities and, in accordance with the basic functions of the Organization, they are disseminated to the public through publications, CD-ROM, diskettes and the Internet. The country level data are officially submitted to the Division for Statistics of FAO (ESS) by various ministries of the respective countries. For details of data collection procedures see <http://faostat.fao.org/abcdq/about.htm>. The figures submitted often display inconsistencies across ministries, for example reported meat production does not always match reported meat consumption when taking into account imports and exports. FAO tries to reconcile the figures, to the effect that FAO statistics may differ from those originally submitted.

The LSBs utilise FAOSTAT data from the following domains: human population, land use, agriculture production, food supply and agricultural and food trade. These are used to derive a standard set of indicators that can quickly be compared across the countries.

Data on the economy are from the World Bank's World Development Indicators CD-Rom, which is also available online <http://www.worldbank.org/data/> and is updated every year. Animal health data are taken from the Office International des Epizooties (OIE) HANDISTATUS II <http://www.oie.int/hs2/>. These are official data supplied by member nations.

For any feedback and comment, please contact:

Pius Chilonda - Livestock Information Analyst
Livestock Information, Sector Analysis and Policy Branch
Animal Production and Health Division
Food and Agricultural Organisation
Viale delle Terme di Caracalla
00100 Rome, Italy

Tel: 00 39 06 57056691
Fax: 00 39 06 57055749
Email: Pius.Chilonda@fao.org

1. GENERAL INFORMATION

Human population, land and socio-economics

Human population	120.9 million
Population density on total land	132.8 persons/sqkm
Annual growth rate (1990-2000)	2.8 %
Population in agriculture	38.1 million
As proportion of total population	31.5 %
Total land area	910,770 sqkm
Agricultural land	722,000 sqkm
As proportion of total land	79.0 %
Land under pasture	392,000 sqkm
As proportion of total land	54.3 %
Irrigated area	2,330 ha
Agricultural land per 100 people	60 ha
Agricultural land per 100 people in agriculture	190 ha
Agricultural population density on agricultural land	52.8 persons/sqkm
GDP ¹	32,953 million US\$
GDP annual growth rate (1990-2000)	2.1 %
GDP per capita/year ¹	248 US\$
GDP per capita annual growth rate (1990-2000)	-0.6 %
Agriculture, GDP	11,761 million US\$
As proportion of total GDP	35.7 %
Livestock, GDP ¹	1,100 million US\$
As proportion of agricultural GDP	9.4 %
Human development Rank	151 Ranking ²
Human development index	0.466
Poverty incidence ³	
Total	34.1 %
Urban	30.4 %
Rural	36.4 %

¹Constant 1995 US\$ ²The HDI rank is determined using HDI values to the fifth decimal point – from 177 countries, as compiled by the UNDP; ³National poverty line; na: not available

Source: World Bank (2002); UNDP (2004); FAO (2005a)

Human population trends

Values expressed in 1,000

Population segment	Year				Annual growth rate (%)	
	1980	1990	2000	2002	1980-1990	1990-2000
Total	64,325	86,018	114,746	120,911	2.9	2.9
Rural	47,041	55,876	64,143	65,463	1.7	1.4
Urban	17,284	30,142	50,603	55,448	5.7	5.3

Source: FAO (2005a)

Trends in agricultural¹ land

Values expressed in sqkm

Land type	Year				Annual growth rate (%)	
	1980	1990	2000	2002	1980-1990	1990-2000
Total	703,850	720,740	700,500	722,000	0.2	-0.3
Cropped ²	303,850	320,740	308,500	330,000	0.5	-0.4
Pastures	400,000	400,000	392,000	392,000	0.0	-0.2

¹The sum of area under arable land, permanent crops and permanent pastures

²Arable and permanent crops

Source: FAO (2005a)

2. LIVESTOCK RESOURCES

Livestock populations

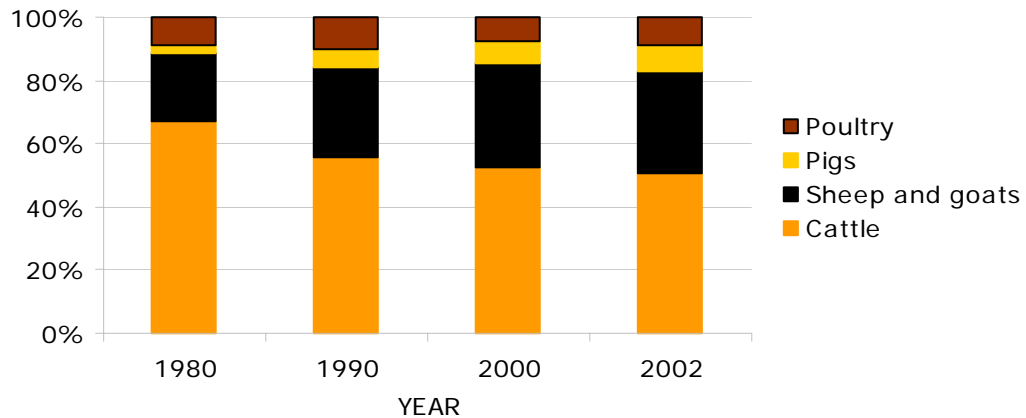
Values expressed in 1,000

Species	Year				Annual growth rate (%)	
	1980	1990	2000	2002	1980-1990	1990-2000
Cattle	12,108	13,947	15,118	15,149	1.4	0.8
Sheep and goats	19,347	35,781	47,500	49,000	6.3	2.9
Pigs	1,000	3,410	5,048	6,112	13.1	4.0
Poultry	79,760	126,090	113,200	131,125	4.7	-1.1
Total LUs	8,986	12,495	14,451	15,008	3.4	1.5

LU: *Livestock unit*; **conversion factors:** cattle (0.50), sheep and goats (0.10), pigs (0.20) and poultry (0.01)

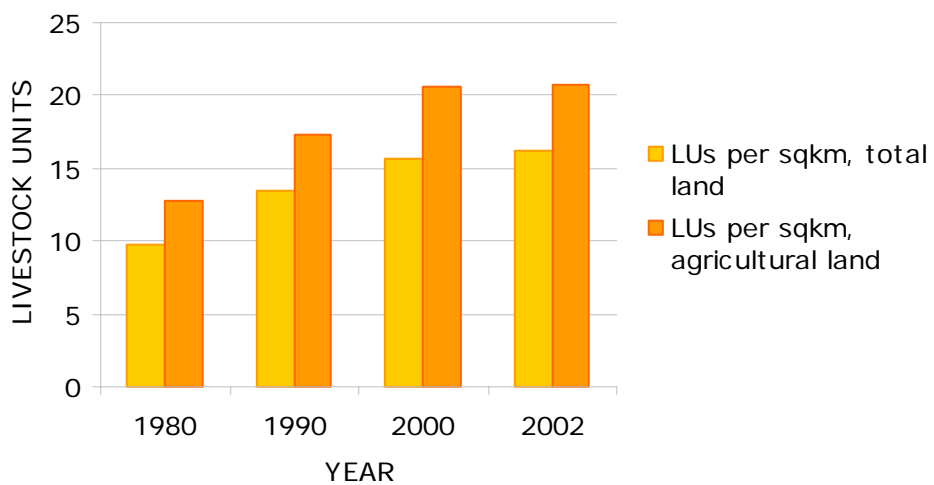
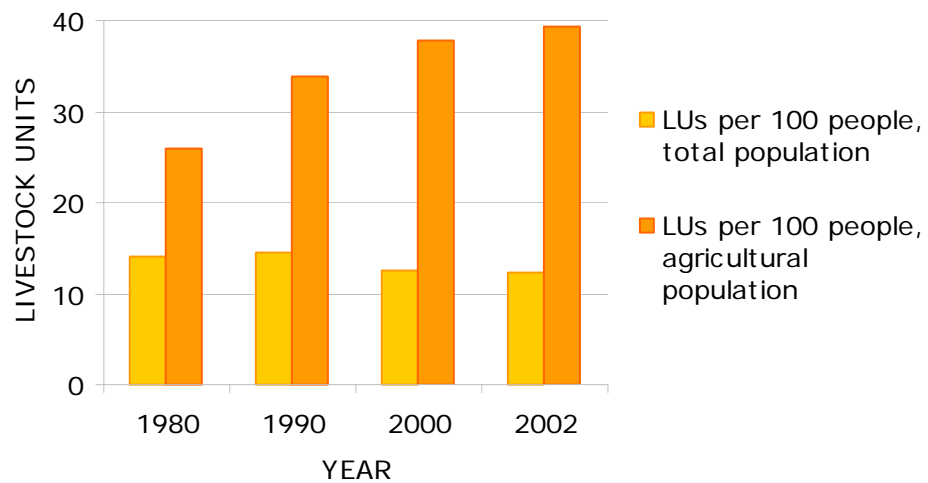
Source: FAO (2005a)

Contribution of different species to total livestock units



Source: FAO (2005a)

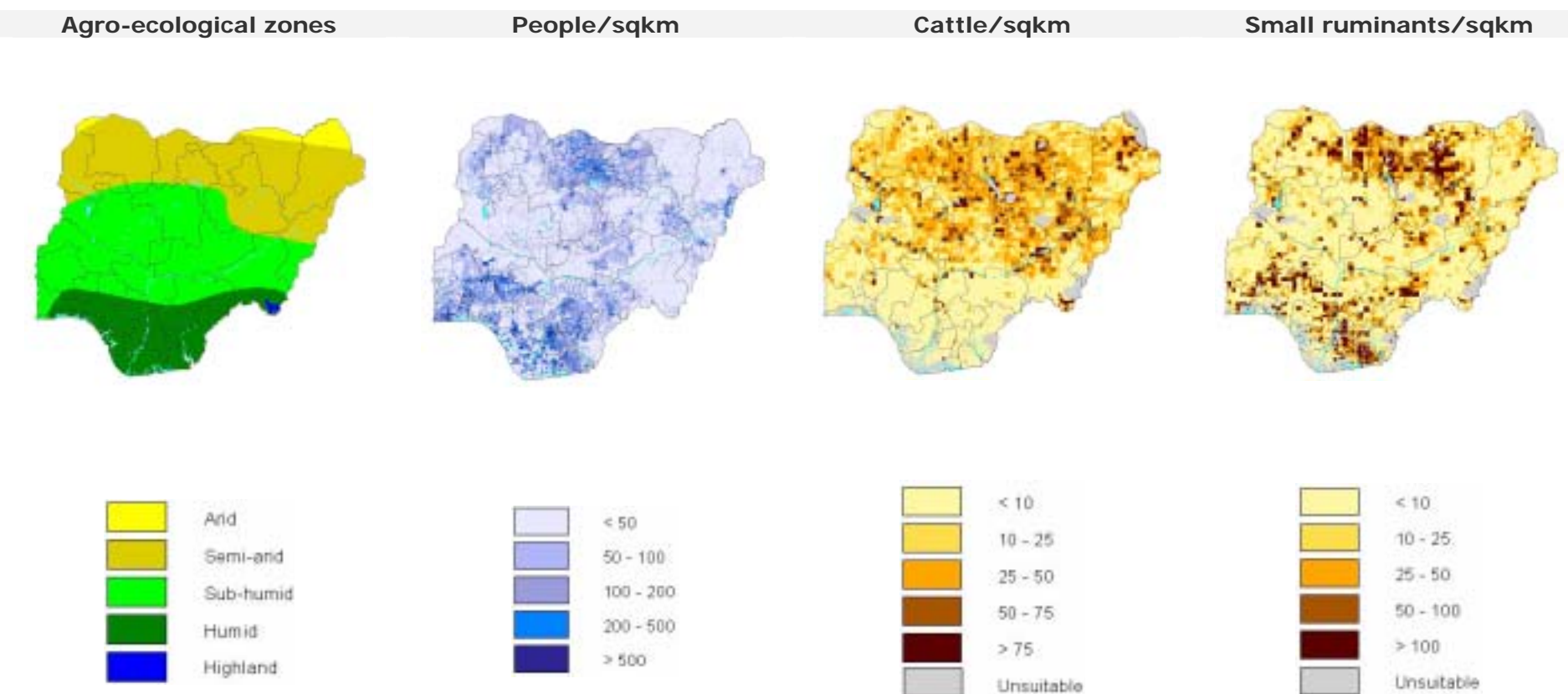
Selected indicators of livestock resources



Source: FAO (2005a)

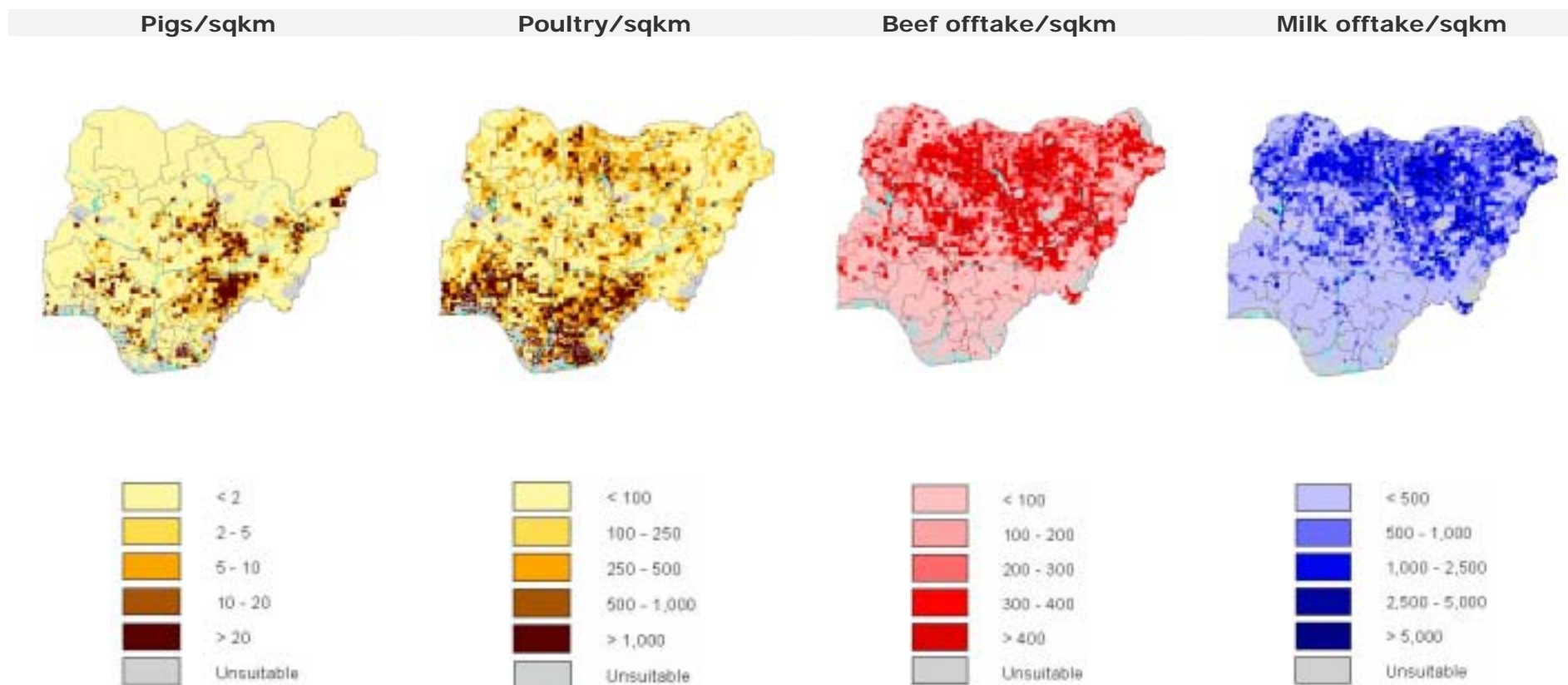
Agro-ecological zones and densities of livestock species (2000)

Density calculated on total land area¹



¹Densities for livestock populations and production are based on total land suitable for livestock production

Source: FAO (2001); LandScan (2002), FAO (2005b)



Source: FAO (2005b); FAO (2003)

3. LIVESTOCK PRODUCTION

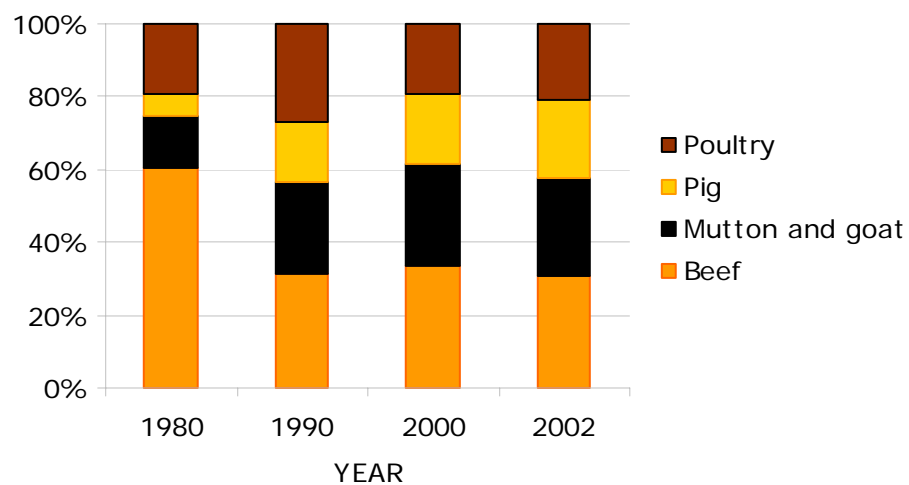
Trends in annual production of meat, milk and eggs

1,000 metric tonnes

Product	Year				Annual growth rate (%)	
	1980	1990	2000	2002	1980-1990	1990-2000
Meat, total	713.6	749.8	950.5	1,021.1	0.5	2.4
Beef	370.2	204.3	279.0	279.5	-5.8	3.2
Mutton and goat	87.1	164.6	234.0	239.0	6.6	3.6
Pig	38.2	106.9	157.5	192.5	10.8	4.0
Poultry	118.0	174.0	160.0	190.0	4.0	-0.8
Milk, total	290.0	351.0	408.0	432.0	1.9	1.5
Eggs, total	200.0	337.0	400.0	450.0	5.4	1.7

Source: FAO (2005a)

Composition of total meat production



Source: FAO (2005a)

Carcass weights and percentage slaughtered by species

Species/year	Carcass weight (kg/animal)				Percentage slaughtered/year			
	1980	1990	2000	2002	1980	1990	2000	2002
Cattle	225.1	141.5	130.1	130.1	13.6	10.4	14.2	14.2
Sheep	11.0	11.0	11.0	11.0	31.7	32.1	41.0	40.0
Goat	12.7	12.7	12.7	12.7	41.2	40.7	41.4	41.5
Pigs	45.0	45.0	45.0	45.0	85.0	69.7	69.3	70.0
Poultry	1.0	1.0	1.0	1.0	147.9	138.0	141.3	144.9

Source: FAO (2005a)

Milk yields and proportion of dairy animals

Species/year	Milk yield (kg/year)				Percentage milked			
	1980	1990	2000	2002	1980	1990	2000	2002
Cattle	240	240	240	240	10.0	10.5	11.2	11.9

Source: FAO (2005a)

Egg yields and proportion of laying birds

Species/year	Eggs (kg/year)				Percentage laying			
	1980	1990	2000	2002	1980	1990	2000	2002
Chicken	4.2	4.2	4.0	4.0	60.2	63.4	88.3	85.8

Source: FAO (2005a)

Estimated feed used for livestock production

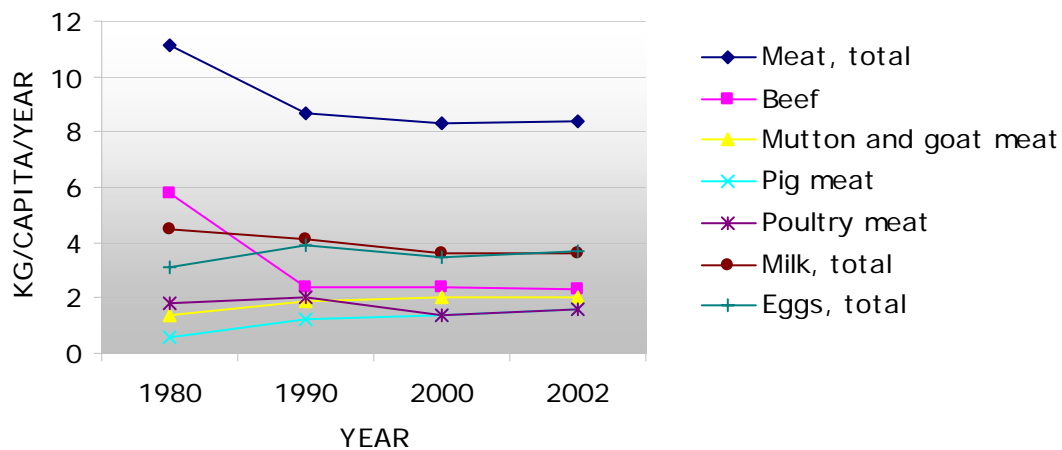
1,000 metric tonnes

Product	Year				Annual growth rate (%)	
	1980	1990	2000	2002	1980-1990	1990-2000
Maize	156.0	1,153.6	821.4	996.5	22.2	-3.3
Barley	2.0	0.0	1.2	0.0	-100.0	
Sorghum	184.6	214.3	400.6	385.2	1.5	6.5
Millet	119.2	256.8	305.2	305.0	8.0	1.7
Wheat	10.0	5.0	20.0	20.0	-6.7	14.9
Brans	693.5	1,126.3	1,913.9	1,912.2	5.0	5.4
Rice Paddy, equivalent						
Roots and Tuber, dry equivalent	869.4	1,439.7	2,420.0	2,606.4	5.2	5.3
Pulses	102.0	270.4	430.0	434.8	10.2	4.7
Oil crops	0.0	0.0	10.9	0.2		108.2

Blanks represent no data

Source: FAO (2005a)

Trends in annual per capita production of meat, milk and eggs



Source: FAO (2005a)

4. CONSUMPTION OF MEAT, MILK AND EGGS

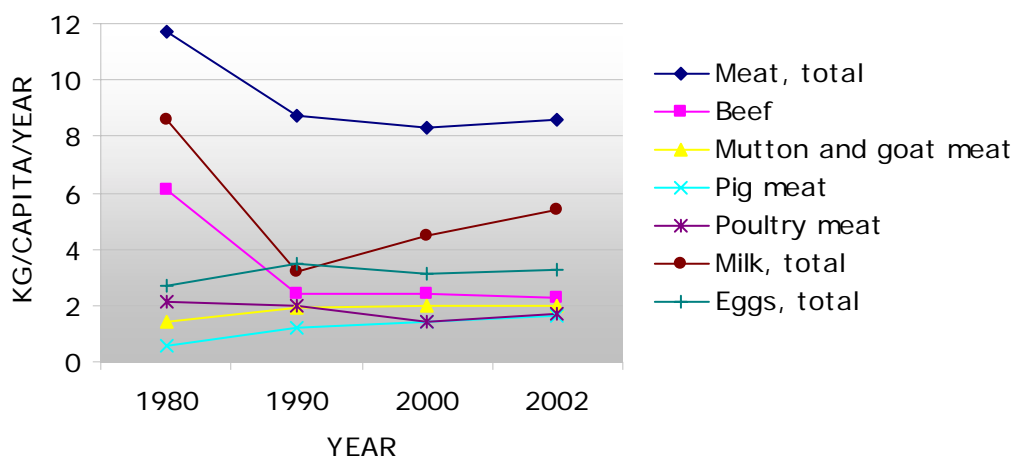
Trends in annual consumption of meat, milk and eggs

1,000 metric tonnes

Product	Year				Annual growth rate (%)	
	1980	1990	2000	2002	1980-1990	1990-2000
Meat, total	753.5	750.1	950.9	1,042.6	0.0	2.4
Beef	394.9	204.3	279.2	282.2	-6.4	3.2
Sheep and goat	87.3	164.6	234.1	239.1	6.5	3.6
Pig	38.3	106.9	157.5	192.8	10.8	4.0
Poultry	133.0	174.1	160.0	208.5	2.7	-0.8
Milk, total	555.9	277.4	515.6	653.7	-6.7	6.4
Eggs, total	176.3	297.6	352.0	396.3	5.4	1.7

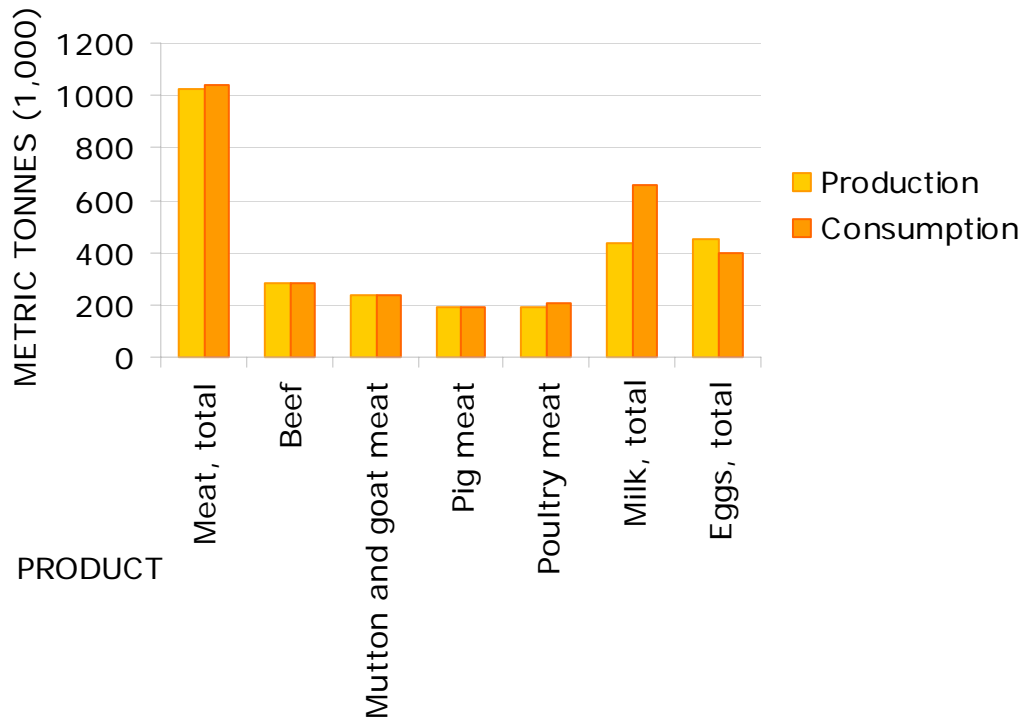
Source: FAO (2005a)

Trends in annual per capita consumption of meat, milk and eggs



Source: FAO (2005a)

Production versus consumption for meat, milk and eggs (2002)



Source: FAO (2005a)

5. TRADE IN LIVESTOCK AND LIVESTOCK PRODUCTS

Trade in agricultural and livestock¹ products

Values in million US\$

Product	Exports				Imports			
	1980	1990	2000	2002	1980	1990	2000	2002
Total	18,859	12,366	22,416	16,406	12,324	8,203	15,794	18,977
Agricultural	446	228	344	407	2,099	561	1,221	1,996
% agricultural	2.4	1.8	1.5	2.5	17.0	6.8	7.7	10.5
Livestock	0.4	3.2	0.0	2.4	500.9	195.7	346.7	430.5
% livestock	0.0	0.0	0.0	0.0	4.1	2.4	2.2	2.3

¹Total trade in goods and services expressed in current US\$. Source: World Bank (2002)
Agricultural trade refers to all agricultural products, while livestock trade refers to trade in livestock products and live animals. Source: FAO (2005b)

Export/import 'dependency' for livestock products

Product	Exports as percentage of production				Imports as percentage of consumption			
	1980	1990	2000	2002	1980	1990	2000	2002
Meat, total	0.00	0.00	0.00	0.00	5.26	0.04	0.03	2.05
Beef	0.00	0.01	0.00	0.00	6.14	0.04	0.07	0.90
Sheep and goat	0.00	0.00	0.00	0.00	0.23	0.00	0.02	0.01
Pig	0.00	0.00	0.00	0.00	0.13	0.03	0.03	0.11
Poultry	0.00	0.00	0.00	0.00	11.28	0.06	0.00	8.88
Milk, equivalent	0.00	0.00	0.00	1.59	124.64	98.63	82.97	88.09
Eggs, total	0.00	0.00	0.00	0.00	0.09	0.02	0.00	0.06

Source: FAO (2005a)

Product	Net exports as percentage of production				Net imports as percentage of consumption			
	1980	1990	2000	2002	1980	1990	2000	2002
Meat, total	0.00	0.00	0.00	0.00	5.26	0.03	0.03	2.05
Beef	0.00	0.00	0.00	0.00	6.14	0.03	0.07	0.90
Sheep and goat	0.00	0.00	0.00	0.00	0.00	0.00	0.00	0.00
Pig	0.00	0.00	0.00	0.00	0.00	0.00	0.00	0.00
Poultry	0.00	0.00	0.00	0.00	0.00	0.00	0.00	0.00
Milk, equivalent	0.00	0.00	0.00	0.00	124.64	98.63	82.97	87.04
Eggs, total	0.00	0.00	0.00	0.00	0.00	0.00	0.00	0.00

Source: FAO (2005a)

Trade in live animals

Species	1980			1990			2000			2002		
	Export	Import	Net trade	Export	Import	Net trade	Export	Import	Net trade	Export	Import	Net trade
Quantities (count)												
Cattle	0	356,000	-356,000	0	270,000	-270,000	0	350,000	-350,000	0	350,000	-350,000
Sheep and goats	0	300,000	-300,000	0	500,000	-500,000	0	780,000	-780,000	5	780,000	-779,995
Pigs		0	0		0	0		13	-13		0	0
Poultry (1,000)	0	15,500	-15,500	0	515	-515	0	1,202	-1,202	32	1,200	-1,168
Value (1,000 US\$)												
Cattle	0	102,000	-102,000	0	95,000	-95,000	0	160,000	-160,000	0	160,000	-160,000
Sheep and goats	0	14,000	-14,000	0	25,000	-25,000	0	50,000	-50,000	0	50,000	-50,000
Pigs		0	0		0	0		8	-8		0	0
Poultry (1,000)	0	10,500	-10,500	0	248	-248	0	2,025	-2,025	30	2,100	-2,070
Total	0	126,500	-126,500	0	120,248	-120,248	0	212,033	-212,033	30	212,100	-212,070

Net trade: Exports less Imports

Blanks represent no data

Source: FAO (2005a)

Trade in livestock products

Product	1980			1990			2000			2002		
	Export	Import	Net trade	Export	Import	Net trade	Export	Import	Net trade	Export	Import	Net trade
Quantities (metric tonnes)												
Meat, total	0	39,628	-39,628	28	263	-235	0	278	-278	0	21,376	-21,376
Beef	0	24,225	-24,225	27	86	-59	0	185	-185	0	2,538	-2,538
Mutton and goat		200	-200		0	0		38	-38		19	-19
Pig		48	-48		30	-30		42	-42		208	-208
Poultry		15,000	-15,000		105	-105		6	-6		18,520	-18,520
Other	0	155	-155	1	42	-43	0	7	-7	0	90	-90
Milk, equivalent	0	692,900	-692,900	0	273,632	-273,632	0	427,792	-427,792	6,873	575,849	-568,976
Eggs, total		160	-160		58	-58		0	0		251	-251
Hides and skins	60	500	-440	1,566	613	953	5	264	-259	134	39	95
Value (1,000 US\$)												
Meat, total	0	85,780	-85,780	12	254	-242	0	608	-608	0	21,437	-21,437
Beef	0	58,200	-58,200	12	48	-36	0	91	-91	0	4,204	-4,204
Mutton and goat		420	-420		0	0		54	-54		111	-111
Pig		160	-160		58	-58		452	-452		766	-766
Poultry		27,000	-27,000		133	-133		11	-11		16,356	-16,356
Other	0	0	0	0	15	-15	0	0	0	0	0	0
Milk, equivalent	0	280,160	-280,160	0	74,776	-74,776	0	133,926	-133,926	1,460	196,076	-194,616
Eggs, total		450	-450		117	-117		0	0		715	-715
Hides and skins	450	1,000	-550	3,117	294	2,823	3	147	-143	899	42	857
Total	450	367,390	-366,940	3,129	75,441	-72,312	3	134,681	-134,677	2,359	218,270	-215,911

Net trade: Exports less Imports

Blanks represent no data

Source: FAO (2005a)

FAO · AGAL

6. LIVESTOCK HEALTH

Total number of cases/outbreaks of selected diseases reported in all susceptible species

Disease	1997	1998	1999	2000	2001	2002	2003
African swine fever	.../...	13,308/14	25,255/202	.../32	57,460/148	10,361/104	2,000/1
Avian Influenza ¹	...		000		000	000	000
Bluetongue	...		000		000	000	000
BSE ²	-	-	000		000	000	000
CBPP ³	.../12	.../23	.../...	.../8	987/31	6,596/18	17/1
Classical swine fever	...		000		000	000	000
Foot and mouth disease	302/3		775/8	.../...	8,351/30	42/4	21,272/6
Lumpy skin disease	...					82/8	.../...
Newcastle disease	...	4,700/7	3,500/17	.../5	107,750/319	8,075/31	8,477/7
Peste des petits ruminants	318,105/68	2,350/23	29,540/94	.../88	318,789/463	59,853/139	1,847/37
Rift Valley fever	...		000		000	000	000
Rinderpest	(1987)	(1987)	(1987)	(1987)	(1987)	(1987)	(1987)
Sheep and goat pox/...		.../...	19/...	.../...
Swine vesicular disease	...		000		000	000	000
Vesicular stomatitis	...		000		000	000	000

¹ Highly pathogenic avian influenza

² Bovine spongiform encephalopathy

³ Contagious bovine pleuropneumonia

no./no. number of cases/outbreaks, ... no information, - disease not reported, 000 disease never reported; (month/year) date of the last reported occurrence of the disease in previous years

Source: OIE (2004)

7. REFERENCES AND FURTHER READING

FAO (2001) Agro-ecological Distributions for Africa, Asia and North and Central America, Consultants' Report. Food and Agriculture Organisation, Rome.

FAO (2003) Cattle and small ruminant production systems in sub-Saharan Africa: a systematic review. Food and Agriculture Organisation, Rome.

FAO (2005a) FAOSTAT data. Food and Agriculture Organisation, Rome.
<http://faostat.external.fao.org/default.jsp> (accessed March, 2005).

FAO (2005b) Global Livestock Production and Health Atlas. Food and Agriculture Organisation, Rome. <http://www.fao.org/ag/aga/glipha/index.jsp> (accessed March, 2005).

LandScan (2002) Global Population Database. Oak Ridge National Laboratory, Oakridge. <http://www.ornl.gov/gist/>

OIE (2004) HANDISTATUS II. Office International des Epizooties, Paris.
<http://www.oie.int/hs2/> (accessed March, 2005).

UNDP (2004). The Human development Reports, United Nations Development Programme, New York. <http://hdr.undp.org/statistics/>

World Bank (2002) The 2002 World Bank development indicators CD-Rom. The World Bank, Washington DC.