

LIVESTOCK SECTOR BRIEF

TURKEY

Food and Agriculture Organization
of the United Nations **FAO**

Livestock Information, Sector Analysis
and Policy Branch **AGAL**



December 2005

TABLE OF CONTENTS

Preface	ii
1. General Information.....	1
Human population, land and socio-economics	1
Human population trends	2
Trends in agricultural land	2
2. Livestock Resources.....	2
Livestock populations	2
Contribution of different species to total livestock units	3
Selected indicators of livestock resources	3
Agro-ecological zones and densities of livestock species (2000)	4
3. Livestock Production	6
Trends in annual production of meat, milk and eggs	6
Composition of total meat production	6
Carcass weights and percentage slaughtered by species.....	7
Milk yields and proportion of dairy animals.....	7
Egg yields and proportion of laying birds.....	7
Estimated feed used for livestock production	8
Trends in annual per capita production of meat, milk and eggs.....	8
4. Consumption of Meat, Milk and Eggs	9
Trends in annual consumption of meat, milk and eggs	9
Trends in annual per capita consumption of meat, milk and eggs.....	9
Production versus consumption for meat, milk and eggs (2002).....	10
5. Trade in Livestock and Livestock Products.....	11
Trade in agricultural and livestock products.....	11
Export/import 'dependency' for livestock products	11
Trade in live animals	12
Trade in livestock products	13
6. Livestock Health	14
Total number of cases/outbreaks of selected diseases reported in all susceptible species	14
7. References and Further Reading.....	15

Data contained in this Livestock Sector Brief are taken from official sources. Official sources are no guarantee for data accuracy and the figures reported in this brief should be taken as indicative and not be used for official purposes. The Food and Agriculture Organization of the United Nations assumes no responsibility for its accuracy, completeness and coherence.

PREFACE

The Livestock Sector Briefs (LSB) are intended to provide a quick overview and an approximate outlook for the livestock sector of the respective country using figures and quantitative indicators originating from official sources. The LSBs are complemented by a synthesis of policy documents available in the public domain.

The majority of the data in the LSBs refer to the country as a whole and come from FAOSTAT, which is available on the internet (<http://faostat.external.fao.org/default.jsp>). FAO, as part of its mandate, compiles information and data on various aspects of food and agriculture from all countries. The data are analysed and interpreted to support FAO's programmes and activities and, in accordance with the basic functions of the Organization, they are disseminated to the public through publications, CD-ROM, diskettes and the Internet. The country level data are officially submitted to the Division for Statistics of FAO (ESS) by various ministries of the respective countries. For details of data collection procedures see <http://faostat.fao.org/abcdq/about.htm>. The figures submitted often display inconsistencies across ministries, for example reported meat production does not always match reported meat consumption when taking into account imports and exports. FAO tries to reconcile the figures, to the effect that FAO statistics may differ from those originally submitted.

The LSBs utilise FAOSTAT data from the following domains: human population, land use, agriculture production, food supply and agricultural and food trade. These are used to derive a standard set of indicators that can quickly be compared across the countries.

Data on the economy are from the World Bank's World Development Indicators CD-Rom, which is also available online <http://www.worldbank.org/data/> and is updated every year. Animal health data are taken from the Office International des Epizooties (OIE) HANDISTATUS II <http://www.oie.int/hs2/>. These are official data supplied by member nations.

For any feedback and comment, please contact:

Gianluca Franceschini
Livestock Information, Sector Analysis and Policy Branch
Animal Production and Health Division
Food and Agricultural Organisation
Viale delle Terme di Caracalla
00100 Rome, Italy

Tel: 00 39 06 57054463
Fax: 00 39 06 57055749
Email: Gianluca.Franceschini@fao.org

1. GENERAL INFORMATION

Human population, land and socio-economics

Human population	70.3 million
Population density on total land	91.4 persons/sqkm
Annual growth rate (1990-2000)	1.6 %
Population in agriculture	20.8 million
As proportion of total population	29.5 %
Total land area	769,630 sqkm
Agricultural land	416,900 sqkm
As proportion of total land	54.2 %
Land under pasture	131,670 sqkm
As proportion of agricultural land	31.6 %
Irrigated area	52,150 ha
Agricultural land per 100 people	59.3 ha
Agricultural land per 100 people in agriculture	200.8 ha
Agricultural population on agricultural land	49.8 persons/sqkm
GDP ¹	204,869 million US\$
GDP annual growth rate (1990-2000)	2.9 %
GDP per capita/year ¹	2,942 US\$
GDP per capita annual growth rate (1990-2000)	1.1 %
Agriculture, GDP	27,858 million US\$
As proportion of total GDP	13.6 %
Livestock, GDP ¹	6,425 million US\$
As proportion of agricultural GDP	23.1 %
Human development Rank	88 Ranking ²
Human development index	0.751
Poverty incidence ³	
Total	na %
Urban	na %
Rural	na %

¹Constant 1995 US\$ ²The HDI rank is determined using HDI values to the fifth decimal point – from 177 countries, as compiled by the UNDP; ³National poverty line; na: not available

Source: World Bank (2002); UNDP (2004); FAO (2005a)

Human population trends

Values expressed in 1,000

Population segment	Year				Annual growth rate (%)	
	1980	1990	2000	2002	1980-1990	1990-2000
Total	46,132	57,593	68,281	70,318	2.2	1.7
Rural	25,935	23,496	24,075	24,158	-1.0	0.2
Urban	20,197	34,097	44,206	46,161	5.4	2.6

Source: FAO (2005a)

Trends in agricultural¹ land

Values expressed in sqkm

Land type	Year				Annual growth rate (%)	
	1980	1990	2000	2002	1980-1990	1990-2000
Total	385,790	396,770	390,500	416,900	0.3	-0.2
Cropped ²	284,790	276,770	266,720	285,230	-0.3	-0.4
Pastures	101,000	120,000	123,780	131,670	1.7	0.3

¹The sum of area under arable land, permanent crops and permanent pastures

²Arable and permanent crops

Source: FAO (2005a)

2. LIVESTOCK RESOURCES

Livestock populations

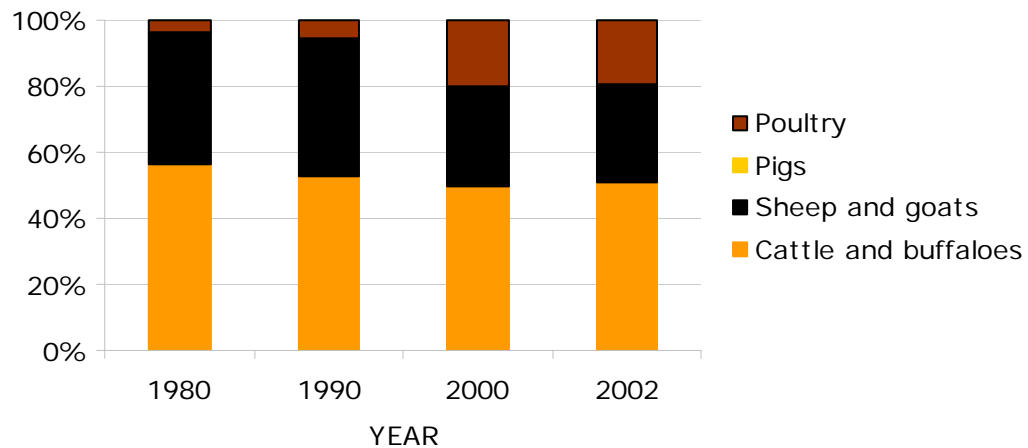
Values expressed in 1,000

Species	Year				Annual growth rate (%)	
	1980	1990	2000	2002	1980-1990	1990-2000
Cattle and buffaloes	16,607	12,602	11,219	10,686	-2.7	-1.2
Sheep and goats	64,801	55,589	38,030	33,994	-1.5	-3.7
Pigs	13	8	3	3	-4.7	-9.3
Poultry	58,284	69,529	246,477	223,141	1.8	13.5
Total LUs	16,252	13,209	12,447	11,516	-2.1	-0.6

LU: Livestock unit; **conversion factors:** cattle (0.55), buffalo (0.60), sheep and goats (0.10), pigs (0.25) and poultry (0.01)

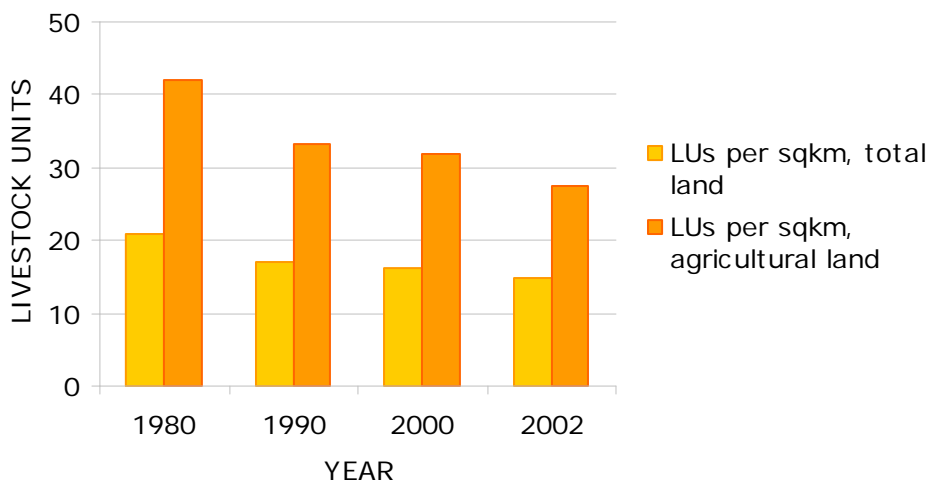
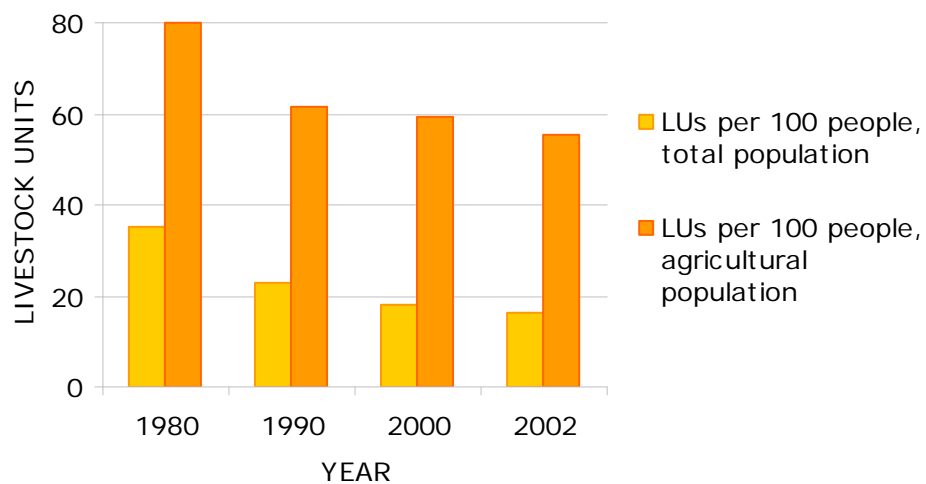
Source: FAO (2005a)

Contribution of different species to total livestock units



Source: FAO (2005a)

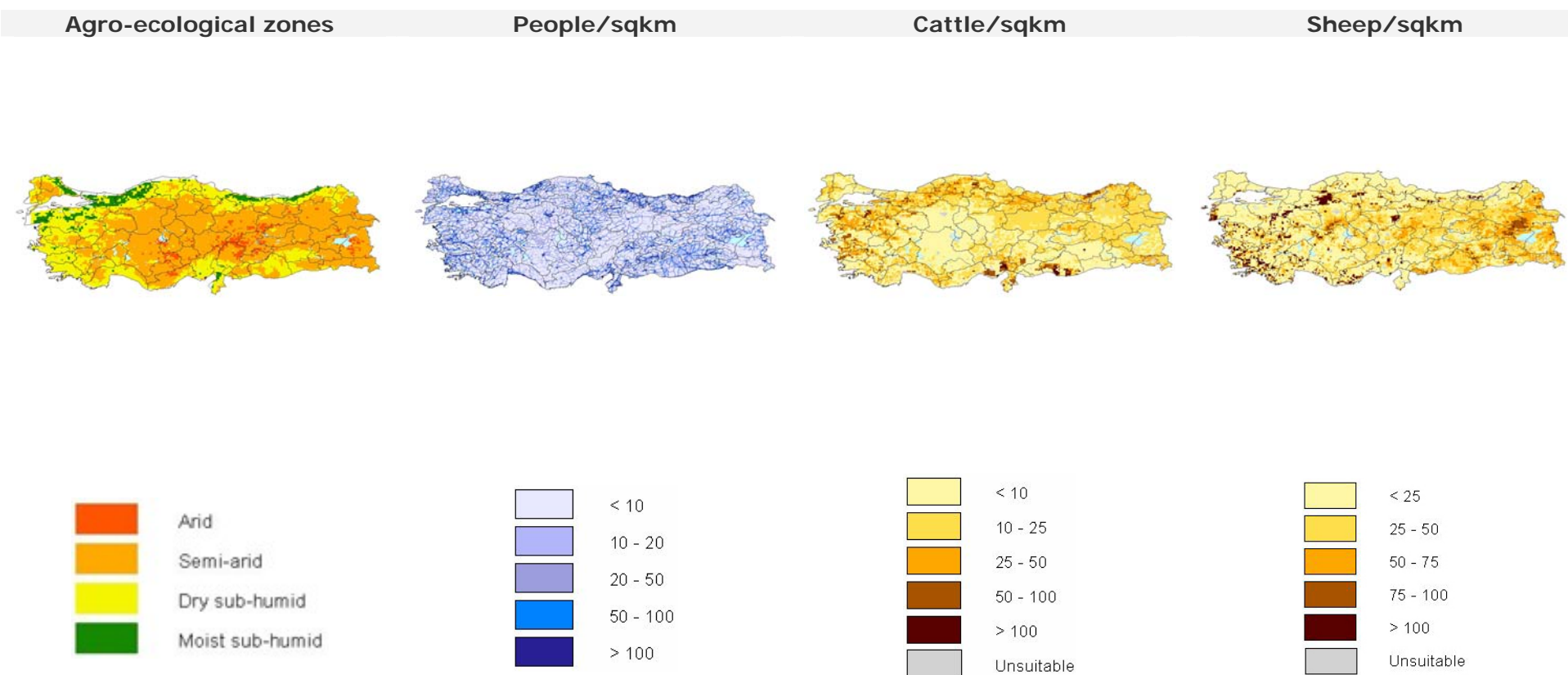
Selected indicators of livestock resources



Source: FAO (2005a)

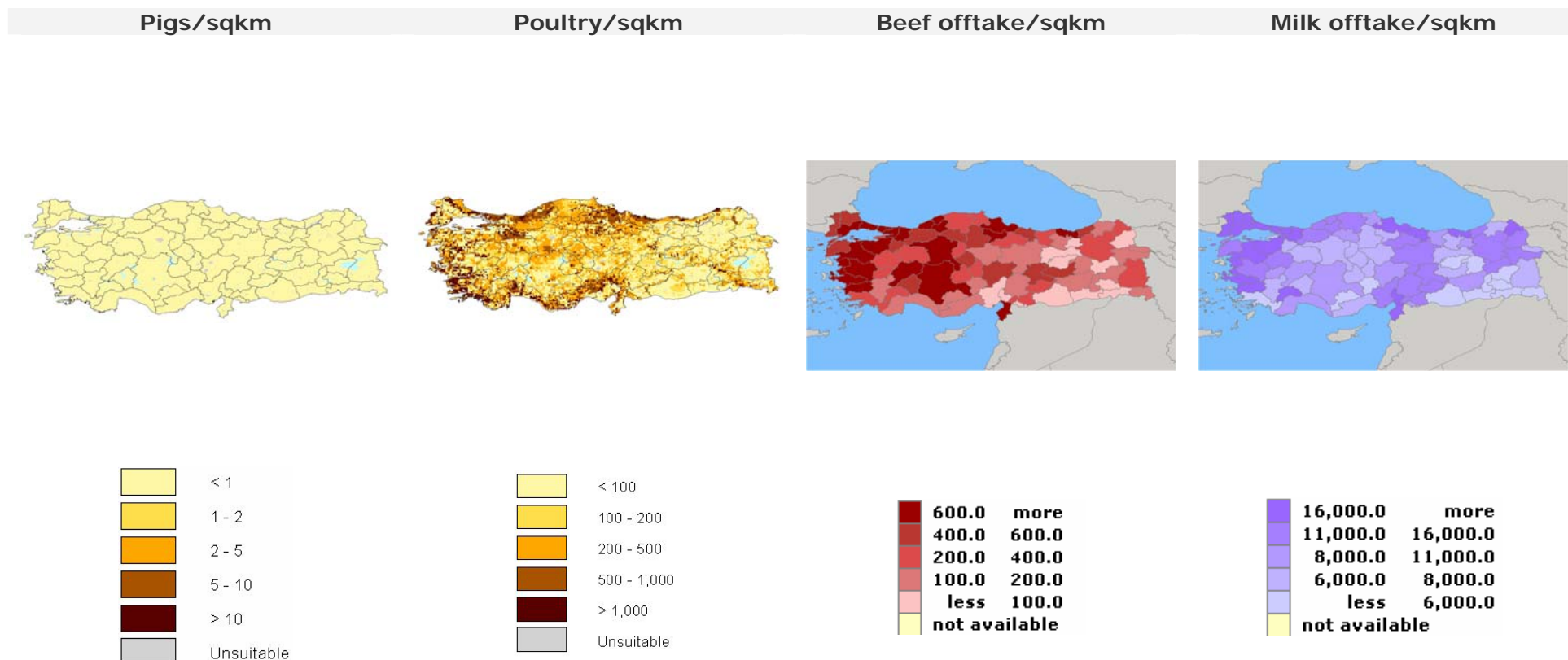
Agro-ecological zones and densities of livestock species (2000)

Density calculated on total land area¹



¹Densities for livestock populations and production is based on total land suitable for livestock production

Source: FAO (2001); LandScan (2002), FAO (2005b)



Source: FAO (2005b)

3. LIVESTOCK PRODUCTION

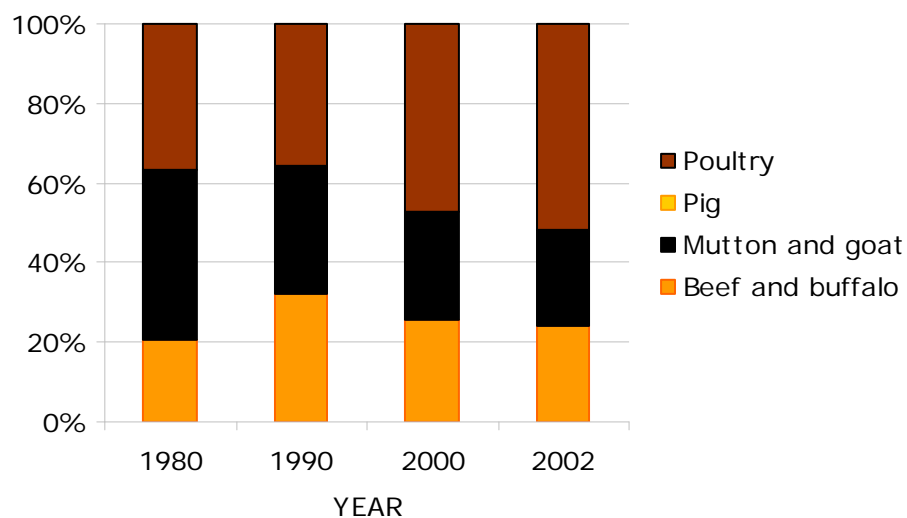
Trends in annual production of meat, milk and eggs

1,000 metric tonnes

Product	Year				Annual growth rate (%)	
	1980	1990	2000	2002	1980-1990	1990-2000
Meat, total	687.7	1,160.9	1,396.7	1,375.6	5.4	1.9
Beef and buffalo	141	372.1	358.7	329.3	10.2	-0.4
Mutton and goat	292	370	374	332.5	2.4	0.1
Pig	0.3	0.3	0.3	0	0.2	-1.8
Poultry	250	415	660.9	710.9	5.2	4.8
Milk, total	9,614.9	9,617.4	9,794.0	8,408.6	0.0	0.2
Eggs, total	206.7	384.9	810	722.2	6.4	7.7

Source: FAO (2005a)

Composition of total meat production



Source: FAO (2005a)

Carcass weights and percentage slaughtered by species

Species/year	Carcass weight (kg/animal)				Percentage slaughtered/year			
	1980	1990	2000	2002	1980	1990	2000	2002
Cattle	59.6	118.6	168.7	184.7	14.1	25	19	16.8
Buffaloes	112.3	138.1	172.1	161.2	9.1	19.3	14.3	7.3
Sheep	12.8	15.7	15.8	15.8	40.7	44.4	67.1	67.1
Goat	13.7	15.7	15.6	15.5	20.4	35.2	43.7	42.7
Pigs	50.9	50.4	75.1	79.2	49.2	81.9	121.7	17.3
Poultry	1.2	1.2	1.6	1.7	351.9	491	171.5	189.7

Source: FAO (2005a)

Milk yields and proportion of dairy animals

Species/year	Milk yield (kg/year)				Percentage milked			
	1980	1990	2000	2002	1980	1990	2000	2002
Cattle	1,300	1,351	1,654	1,705	38.1	48.4	47.8	41.6
Buffaloes	797	929	967	986	33	43.7	42.2	37.4

Source: FAO (2005a)

Egg yields and proportion of laying birds

Species/year	Eggs (kg/year)				Percentage laying			
	1980	1990	2000	2002	1980	1990	2000	2002
Chicken	7.4	7.3	12.5	12.6	51.9	82	27	26.3

Source: FAO (2005a)

Estimated feed used for livestock production

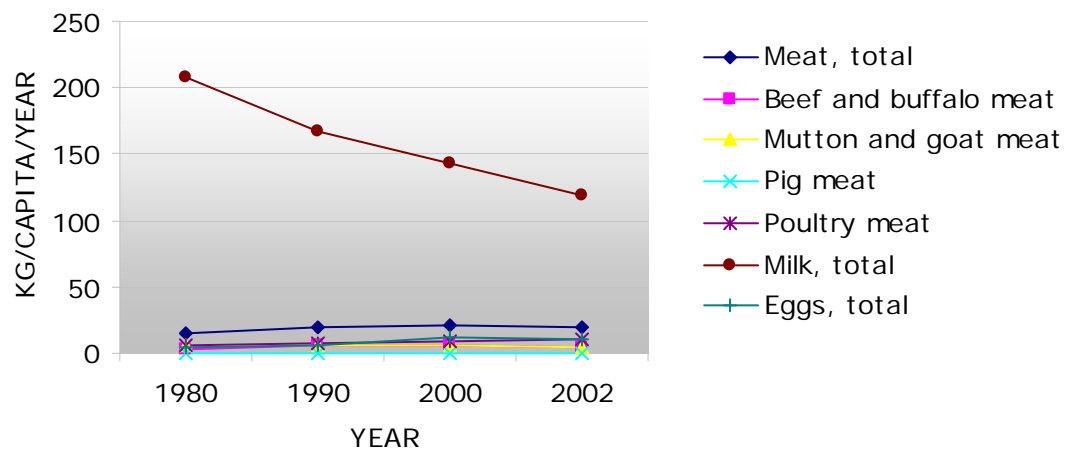
1,000 metric tonnes

Product	Year				Annual growth rate (%)	
	1980	1990	2000	2002	1980-1990	1990-2000
Maize	682	1,155.0	1,972.0	1,830.0	5.4	5.5
Barley	3,853.5	5,617.4	5,752.5	5,601.8	3.8	0.2
Sorghum	0	25.8	0	0		-100.0
Millet	20.6	5.2	6.5	10.1	-12.8	2.2
Wheat	1,980.00	400	1,000.0	1,050.0	-14.8	9.6
Brans	1,039.4	1,367.6	1,699.9	1,737.9	2.8	2.2
Rice Paddy, equivalent						
Roots and Tuber, dry equivalent	12	210.9	147.2	5.5	33.2	-3.5
Pulses	100.3	410.1	308.6	269.2	15.1	-2.8
Oil crops	0	0	6.7	0.8		

Blanks represent no data

Source: FAO (2005a)

Trends in annual per capita production of meat, milk and eggs



Source: FAO (2005a)

4. CONSUMPTION OF MEAT, MILK AND EGGS

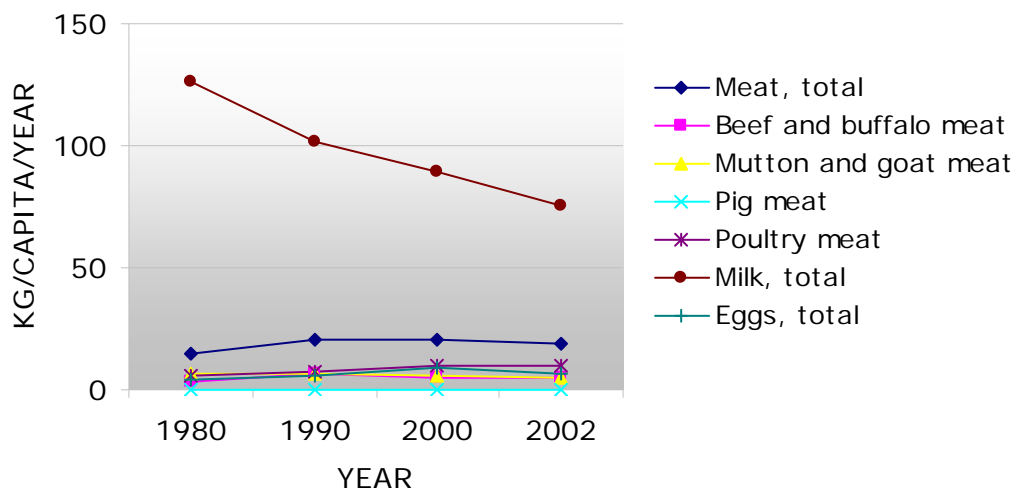
Trends in annual consumption of meat, milk and eggs

1,000 metric tonnes

Product	Year				Annual growth rate (%)	
	1980	1990	2000	2002	1980-1990	1990-2000
Meat, total	679.7	1,162.8	1,393.1	1,353.4	5.5	1.8
Beef and buffalo	141	381.7	358.5	328	10.5	-0.6
Sheep and goat	286.4	362.9	373	332.5	2.4	0.3
Pig	0.2	0.4	0	0	7.2	-100.0
Poultry	250	414.6	658.6	690.9	5.2	4.7
Milk, total	5,838.8	5,874.4	6,110.8	5,308.3	0.1	0.4
Eggs, total	178.8	337.4	606.6	485.7	6.6	6.0

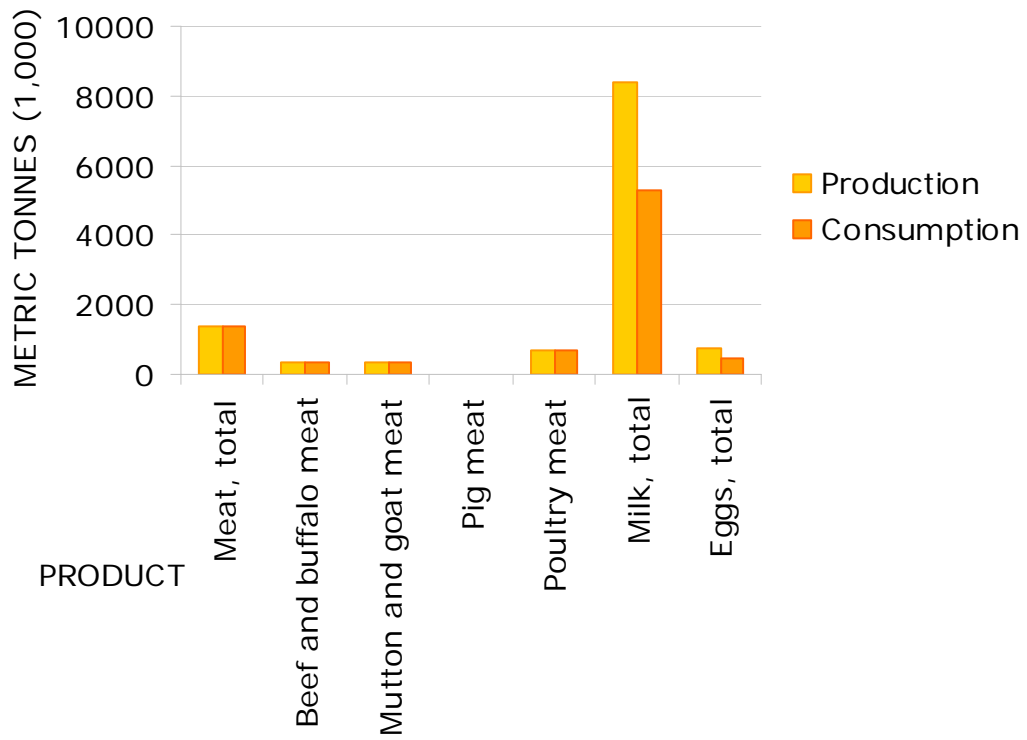
Source: FAO (2005a)

Trends in annual per capita consumption of meat, milk and eggs



Source: FAO (2005a)

Production versus consumption for meat, milk and eggs (2002)



Source: FAO (2005a)

5. TRADE IN LIVESTOCK AND LIVESTOCK PRODUCTS

Trade in agricultural and livestock¹ products

Values in million US\$

Product	Exports				Imports			
	1980	1990	2000	2002	1980	1990	2000	2002
Total	3,660.1	20,014.2	47,918.7	54,608.0	8,456.6	26,464.0	62,834.6	55,095.0
Agricultural	1,834.3	3,120.0	3,620.5	3,476.8	335.7	2,262.1	3,231.0	3,070.9
% agricultural	50.1	15.6	7.6	6.4	4	8.5	5.1	5.6
Livestock	121.1	238	57.9	99.2	12.6	271.6	294	502.7
% livestock	3.3	1.2	0.1	0.2	0.1	1	0.5	0.9

¹Total trade in goods and services expressed in current US\$. Source: World Bank (2002)
Agricultural trade refers to all agricultural products, while livestock trade refers to trade in livestock products and live animals. Source: FAO (2005b)

Export/import 'dependency' for livestock products

Product	Exports as percentage of production				Imports as percentage of consumption			
	1980	1990	2000	2002	1980	1990	2000	2002
Meat, total	1.17	0.74	0.39	1.53	0.00	0.89	0.11	0.00
Beef and buffalo	0.00	0.10	0.07	0.12	0.00	2.60	0.00	0.00
Sheep and goat	1.92	1.94	0.27	0.00	0.00	0.01	0.00	0.00
Pig	28.92	16.41	69.73	477.84	0.00	30.98	0.00	0.00
Poultry	0.00	0.15	0.57	2.83	0.00	0.05	0.22	0.01
Milk, equivalent	0.03	0.16	0.12	0.54	0.11	1.81	1.64	1.66
Eggs, total	0.00	0.64	0.44	0.22	0.00	0.08	0.17	0.46

Source: FAO (2005a)

Product	Net exports as percentage of production				Net imports as percentage of consumption			
	1980	1990	2000	2002	1980	1990	2000	2002
Meat, total	1.17	0.00	0.28	1.52	0.00	0.15	0.00	0.00
Beef and buffalo	0.00	0.00	0.06	0.12	0.00	2.50	0.00	0.00
Sheep and goat	1.92	1.92	0.27	0.00	0.00	0.00	0.00	0.00
Pig	28.92	0.00	52.55	429.73	0.00	18.25	0.00	0.00
Poultry	0.00	0.09	0.34	2.79	0.00	0.00	0.00	0.00
Milk, equivalent	0.00	0.00	0.00	0.00	0.06	1.54	1.24	0.47
Eggs, total	0.00	0.58	0.31	0.00	0.00	0.00	0.00	0.10

Source: FAO (2005a)

Trade in live animals

Species	1980			1990			2000			2002		
	Export	Import	Net trade	Export	Import	Net trade	Export	Import	Net trade	Export	Import	Net trade
Quantities (count)												
Cattle and buffaloes	15	3,521	-3,506	0	182,998	-182,998	3	1,449	-1,446	135	0	135
Sheep and goats	934,025	0	934,025	2,608,061	7,103	2,600,958	166	9	157	304,586	0	304,586
Pigs		0	0		0	0		0	0		0	0
Poultry (1,000)	524	621	-97	94	1,363	-1,269	692	6,206	-5,514	3,127	2,644	483
Value (1,000 US\$)												
Cattle and buffaloes	10	4,187	-4,177	0	103,736	-103,736	4	3,266	-3,262	162	0	162
Sheep and goats	97,685	0	97,685	201,463	317	201,146	14	2	12	25,229	0	25,229
Pigs		0	0		0	0		0	0		0	0
Poultry (1,000)	289	1,746	-1,457	167	4,838	-4,671	576	16,188	-15,612	2,149	8,313	-6,164
Total	97,984	5,933	92,051	201,630	108,891	92,739	594	19,456	-18,862	27,540	8,313	19,227

Net trade: Exports less Imports

Blanks represent no data

Source: FAO (2005a)

Trade in livestock products

Product	1980			1990			2000			2002		
	Export	Import	Net trade	Export	Import	Net trade	Export	Import	Net trade	Export	Import	Net trade
Quantities (metric tonnes)												
Meat, total	8,016	0	8,016	8,606	10,295	-1,689	5,393	1,520	3,873	21,008	63	20,945
Beef and buffalo	0	0	0	381	9,911	-9,530	236	8	228	400	5	395
Mutton and goat	5,593	0	5,593	7,165	53	7,112	1,018	4	1,014	13	1	12
Pig	94	0	94	54	127	-73	191	47	144	177	18	159
Poultry	0	0	0	574	203	371	3,697	1,446	2,251	19,894	38	19,856
Other	2,329	0	2,329	403	0	403	177	9	168	325	0	325
Milk, equivalent	3,128	6,420	-3,292	15,591	106,215	-90,624	25,031	100,898	-75,867	63,509	88,379	-24,870
Eggs, total	0	0	0	2,476	254	2,222	3,556	1,051	2,505	1,594	2,243	-649
Hides and skins	92	2,216	-2,124	284	57,473	-57,189	17,834	143,949	-126,115	17,061	214,302	-197,241
Value (1,000 US\$)												
Meat, total	20,635	0	20,635	21,255	14,435	6,820	12,501	1,158	11,343	13,932	74	13,858
Beef and buffalo	0	0	0	1,199	13,683	-12,484	696	22	674	294	6	288
Mutton and goat	17,367	0	17,367	17,132	69	17,063	4,070	3	4,067	43	3	40
Pig	212	0	212	285	481	-196	934	98	836	409	33	376
Poultry	0	0	0	873	202	671	6,017	974	5,043	11,622	32	11,590
Other	3,056	0	3,056	1,738	0	1,738	586	30	556	1,390	0	1,390
Milk, equivalent	1,446	1,748	-302	8,049	18,074	-10,025	14,674	32,709	-18,035	21,952	23,890	-1,938
Eggs, total	0	0	0	4,062	701	3,361	3,629	2,995	634	3,044	12,640	-9,596
Hides and skins	147	4,948	-4,801	868	129,213	-128,345	26,473	224,679	-198,206	32,650	451,230	-418,580
Total	22,228	6,696	15,532	34,206	162,423	-128,217	57,079	261,510	-204,431	71,404	487,834	-416,430

Net trade: Exports less Imports

Blanks represent no data

Source: FAO (2005a)

6. LIVESTOCK HEALTH

Total number of cases/outbreaks of selected diseases reported in all susceptible species

Disease	1997	1998	1999	2000	2001	2002	2003
African swine fever	000	000	000	000	000	000	000
Avian Influenza ¹	-	-	-	-	-	-	-
Bluetongue	(11/1979)	(11/1979)	172/15	22/2	(08/2000)	(08/2000)	(08/2000)
BSE ²					-	-	-
CBPP ³	000	000	000	000	000	000	000
Classical swine fever	000	000	000	000	000	000	000
Foot and mouth disease	612/56	1,804/75	1,324/62	4,127/177	2,345/93	1,136/61	933/64
Lumpy skin disease	000	000	000	000	000	000	000
Newcastle disease	9,010/6	(07/1997)	(07/1997)	(07/1997)	18/1	(2001)	(2001)
Peste des petits ruminants		-	142/7	1,661/43	586/25	253/6	198/13
Rift Valley fever	000	000	000	000	000	000	000
Rinderpest	(01/1996)	(01/1996)	(01/1996)	(01/1996)	(01/1996)	(01/1996)	(01/1996)
Sheep and goat pox	731/31	446/17	148/10	1,218/41	358/26	1,137/21	618/28
Swine vesicular disease	000	000	000	000	000	000	000
Vesicular stomatitis	000	000	000	000	000	000	000

¹ Highly pathogenic avian influenza

² Bovine spongiform encephalopathy

³ Contagious bovine pleuropneumonia

no/ no number of cases/outbreaks, ... no information available, - disease not reported, 000 disease never reported; (month/year) date of the last reported occurrence of the disease in previous years

Source: OIE (2004)

7. REFERENCES AND FURTHER READING

FAO (2001) Agro-ecological Distributions for Africa, Asia and North and Central America, Consultants' Report. Food and Agriculture Organisation, Rome.

FAO (2005a) FAOSTAT data. Food and Agriculture Organisation, Rome.
<http://faostat.external.fao.org/default.jsp> (accessed March, 2005).

FAO (2005b) Global Livestock Production and Health Atlas. Food and Agriculture Organisation, Rome. <http://www.fao.org/ag/aga/glipha/index.jsp> (accessed March, 2005).

LandScan (2002) Global Population Database. Oak Ridge National Laboratory, Oakridge. <http://www.ornl.gov/gist/>

OIE (2004) HANDISTATUS II. Office International des Epizooties, Paris.
<http://www.oie.int/hs2/> (accessed March, 2005).

UNDP (2004). The Human development Reports, United Nations Development Programme, New York. <http://hdr.undp.org/statistics/>

World Bank (2002) The 2002 World Bank development indicators CD-Rom. The World Bank, Washington DC.