

Prosternal tubercle  
between front legs

no  
yes

go to  
plate 4

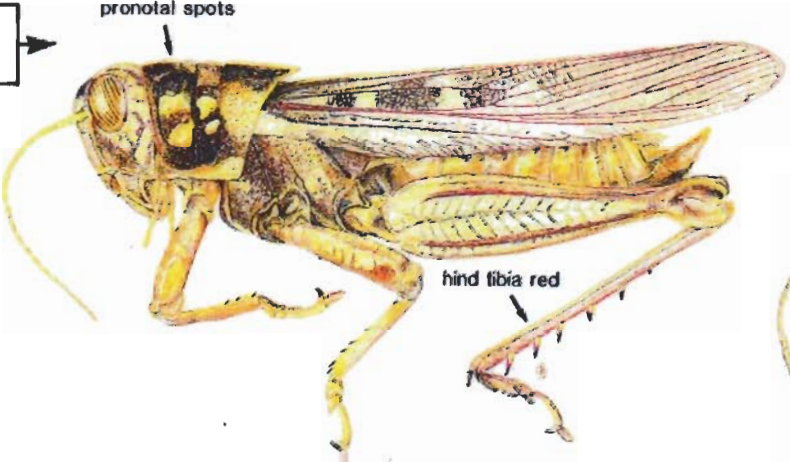
without pronotal  
spots

with 4 distinct  
pronotal spots

OR

with 4 indistinct  
pronotal spots

hind tibia  
red-mauve



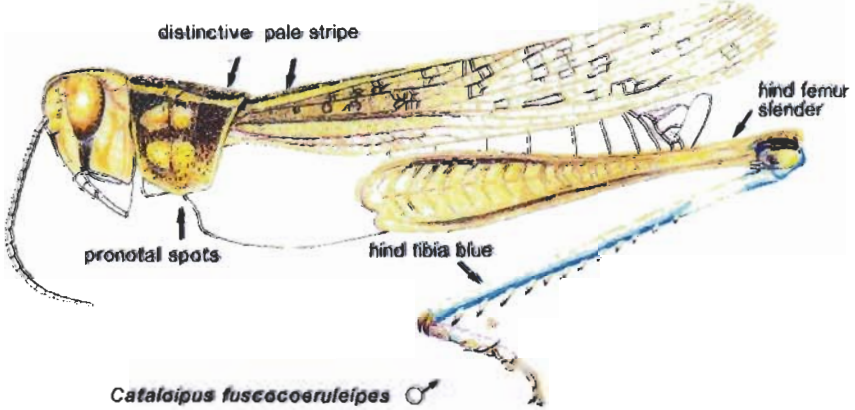
*Kraussaria angulifera* ♂

hind tibia  
blue



*Cataloipus cymbiferus* ♂

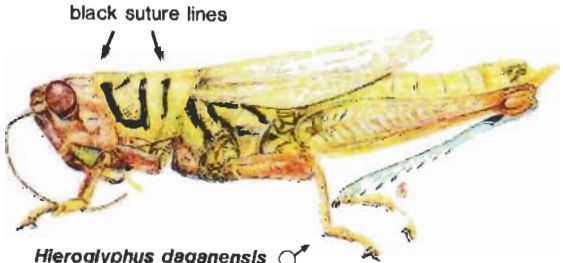
hind tibia  
blue



*Cataloipus fuscicoeruleipes* ♂

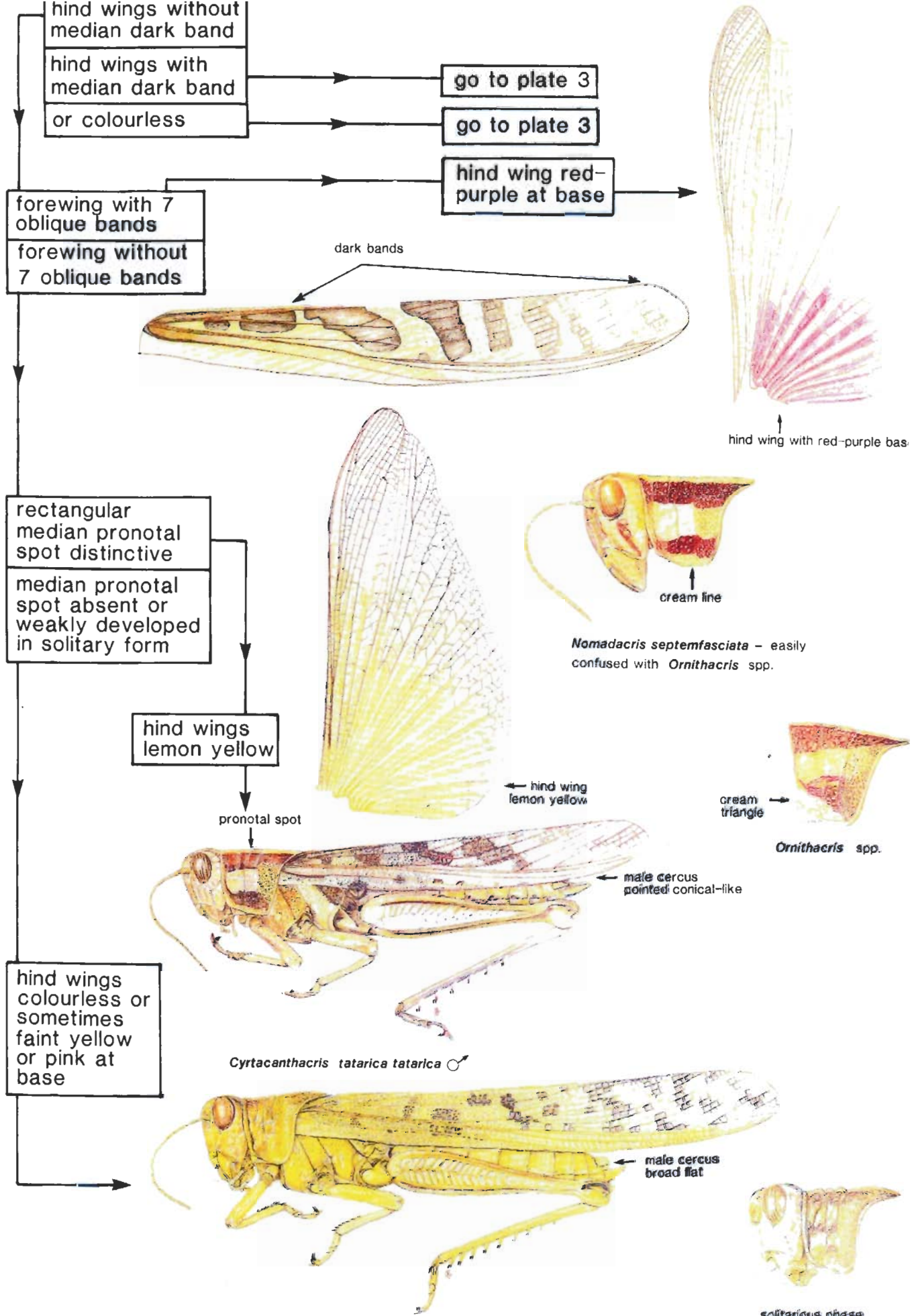
- pronotum  
with 4 black  
suture lines

- pronotum  
without distinctive  
black lines



*Hieroglyphus daganensis* ♂

go to plate 2



hind wings with median dark band  
 hind wings with median dark band  
 or colourless

go to plate 3  
 go to plate 3

hind wing red-purple at base

forewing with 7 oblique bands  
 forewing without 7 oblique bands

dark bands

hind wing with red-purple bas

rectangular median pronotal spot distinctive  
 median pronotal spot absent or weakly developed in solitary form

*Nomadacris septemfasciata* - easily confused with *Ornithacris* spp.

hind wings lemon yellow

hind wing lemon yellow

cream triangle

*Ornithacris* spp.

pronotal spot

male cercus pointed conical-like

hind wings colourless or sometimes faint yellow or pink at base

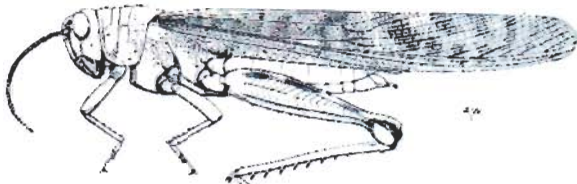
*Cyrtacanthacris tatarica tatarica* ♂

male cercus broad flat

solitary phase

large insect,  
hind wings with  
median dark band

medium size insect,  
hind wings without  
dark bands



*Anacridium melanorhodon* ♀

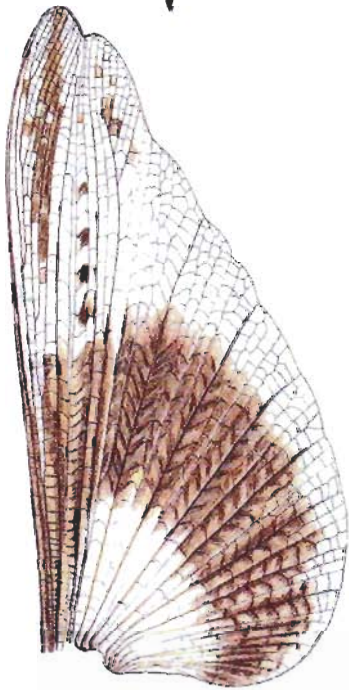
with broad  
dark band

OR

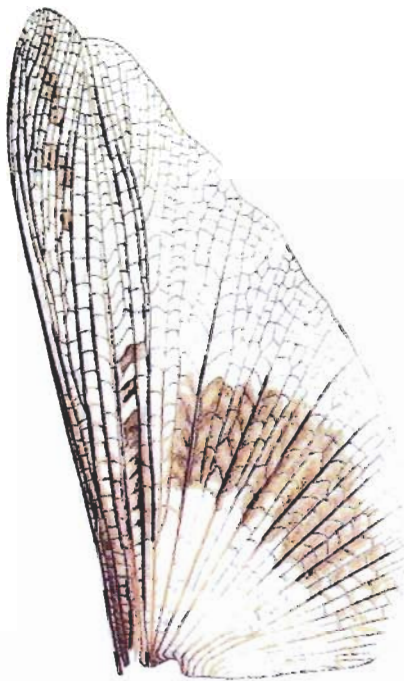
narrower  
broad band

band extending  
across hind wing

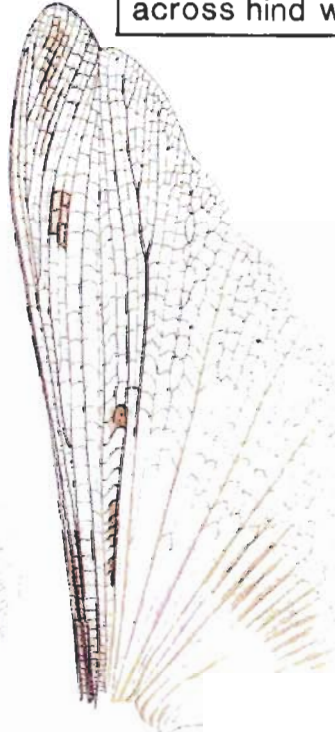
band not extending  
across hind wing



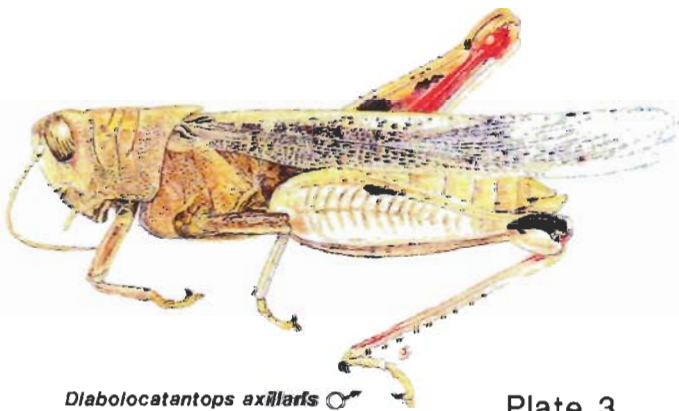
*Anacridium wernerellum*



*Anacridium melanorhodon arabafum*



*Anacridium melanorhodon melanorhodon*



*Diabolocatantops axillaris* ♂

inner surface of hind  
femur dark red, outer  
surface with small  
dorsal median bar

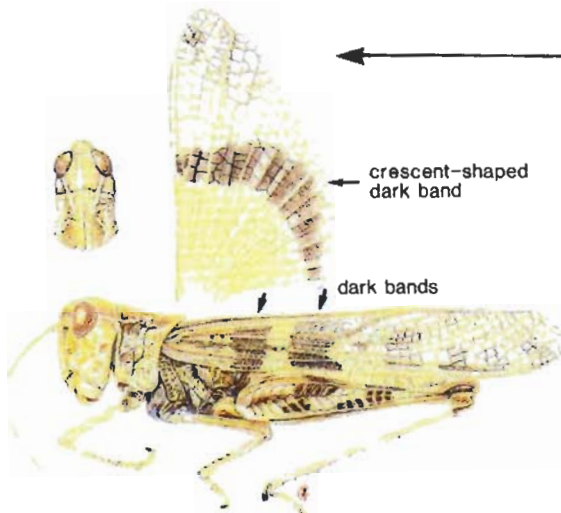
insect very brightly coloured  
generally brown or brown with some green



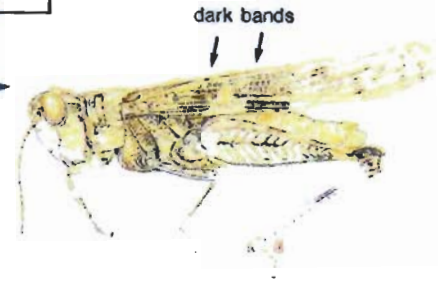
*Zonocerus variegatus* ♂

forewings with two dark bands  
forewings with irregular spots

hind wing with crescent-shaped dark band  
without dark band



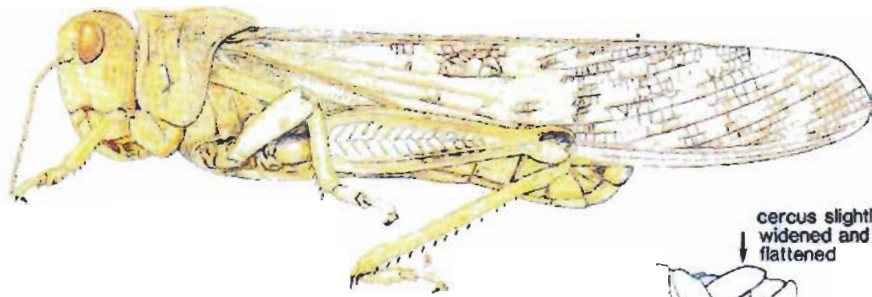
*Oedaleus senegalensis* ♂



*Alolopus simulatrix simulatrix* ♂

very similar in appearance

♂ cercus slightly widened and flattened  
♂ cercus narrow and conical in shape

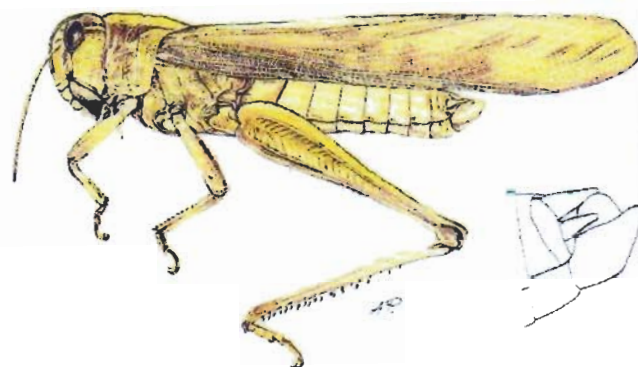


*Locustana pardalina* ♂

OR



*Locusta migratoria migratorioides* ♂, gregarious phase



*Locusta migratoria migratorioides* ♂, solitary phase