



**Seasonal precipitation predictions
in Desert Locust spring/summer breeding areas
(May – October 2021)**

FAO Desert Locust Information Service (DLIS) / World Climate Service (WCS)

issued 14 April 2021

In the **Horn of Africa**, slightly above-normal rains are anticipated in NW Kenya and S Ethiopia for spring breeding in May and June. Above-normal rains are expected in NE Ethiopia and NW Somalia during July, extending over N Somalia in August for summer breeding. In **Yemen**, above-normal rains are expected in the summer breeding areas of the interior from July to September. In **Southwest Asia**, above-normal rains are anticipated in coastal areas from Hormozgan, Iran to Baluchistan, Pakistan in May, extending to the interior in June for spring breeding. An early onset of the monsoon is likely in June in the Indo–Pakistan summer breeding areas followed by generally above-normal rains. Tropical cyclone risk in the N Arabian Sea is much higher than normal. In the **Sahel of W Africa and Sudan**, slightly above-normal rains are anticipated in parts of the summer breeding areas during August and September.

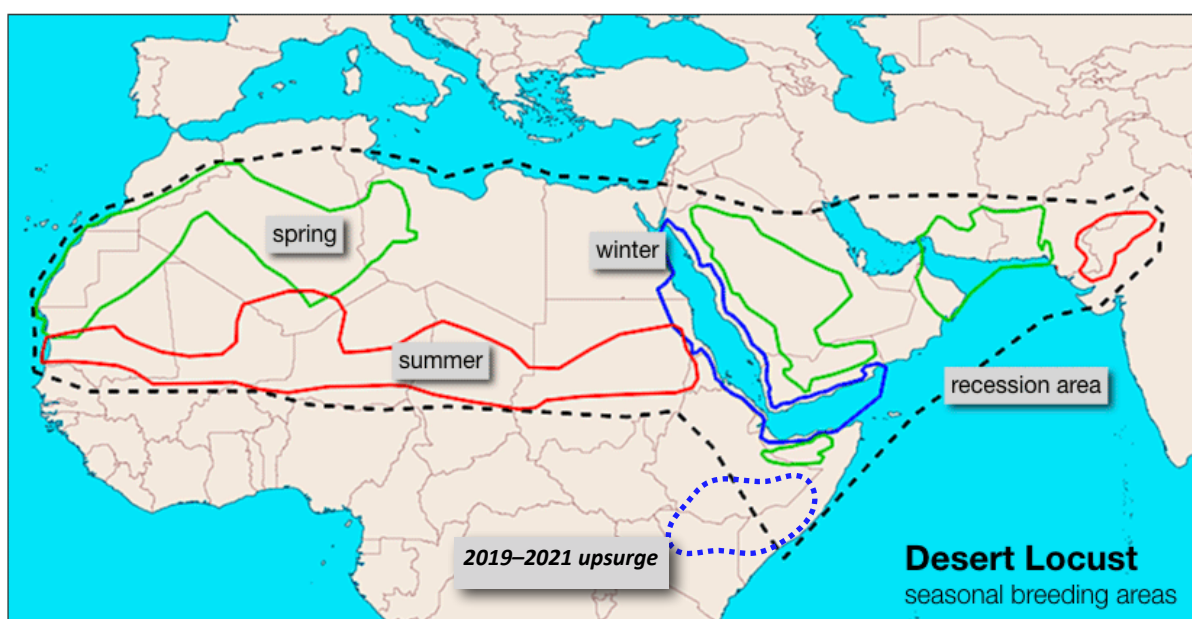
Spring breeding areas (May–June)

- Horn of Africa: slightly wetter than normal in NW Kenya (Turkana, Marsabit, Samburu) and S Ethiopia (SNNP, S Oromia); drier than normal elsewhere
- SW Asia: wetter than normal in coastal areas in May (SE Iran, SW Pakistan), spreading to interior in June
- Central Region: drier than normal in the interior of the Arabian Peninsula
- Western Region: drier than normal S of Atlas Mountains

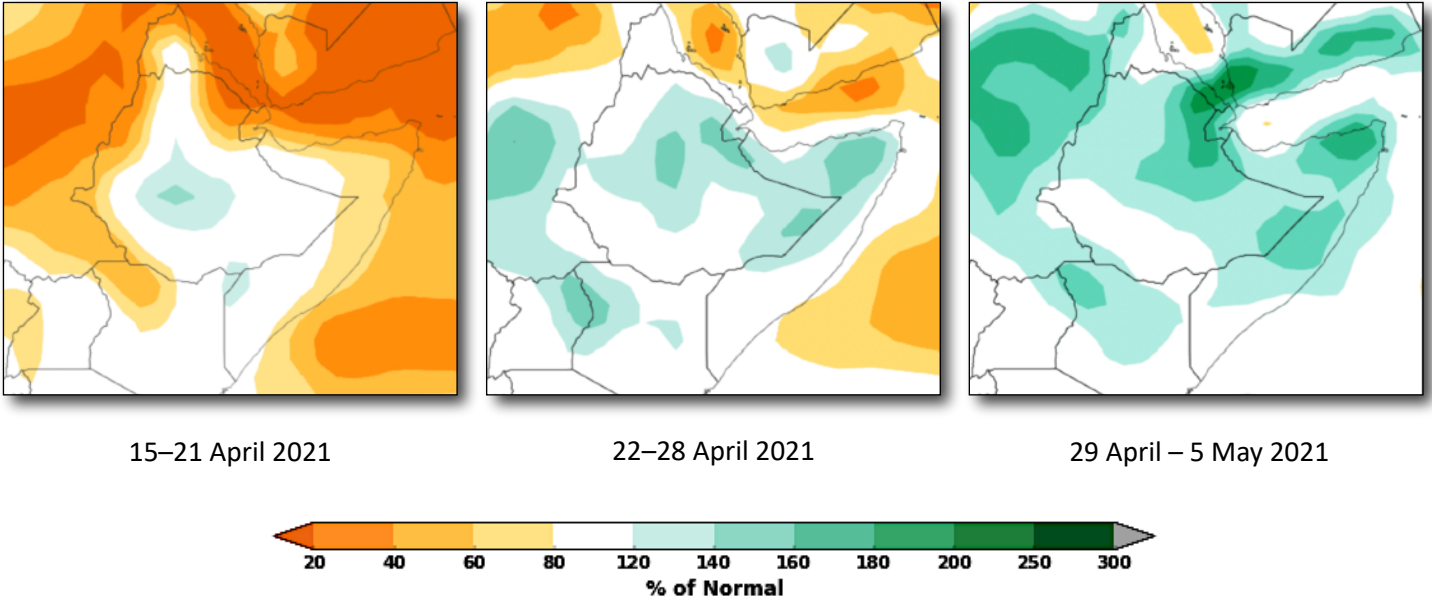
Summer breeding areas (June–October)

- Horn of Africa: drier than normal June (Afar, Ethiopia); wetter than normal July–August (Afar; NW Somalia), August (N Somalia); normal September; drier than normal October
- W Africa / Sudan: slightly wetter than normal (August–September)
- Yemen interior: wetter than normal (July–September)
- Indo–Pakistan: wetter than normal early (June) followed by slightly wetter than normal

The latest seasonal precipitation predictions, provided by the World Climate Service (WCS) and derived from **six** models, CFSv2, ECMWF and Copernicus (CMCC, DWD, Météo-France, UKMO GloSea6), are one of the most sophisticated products available.

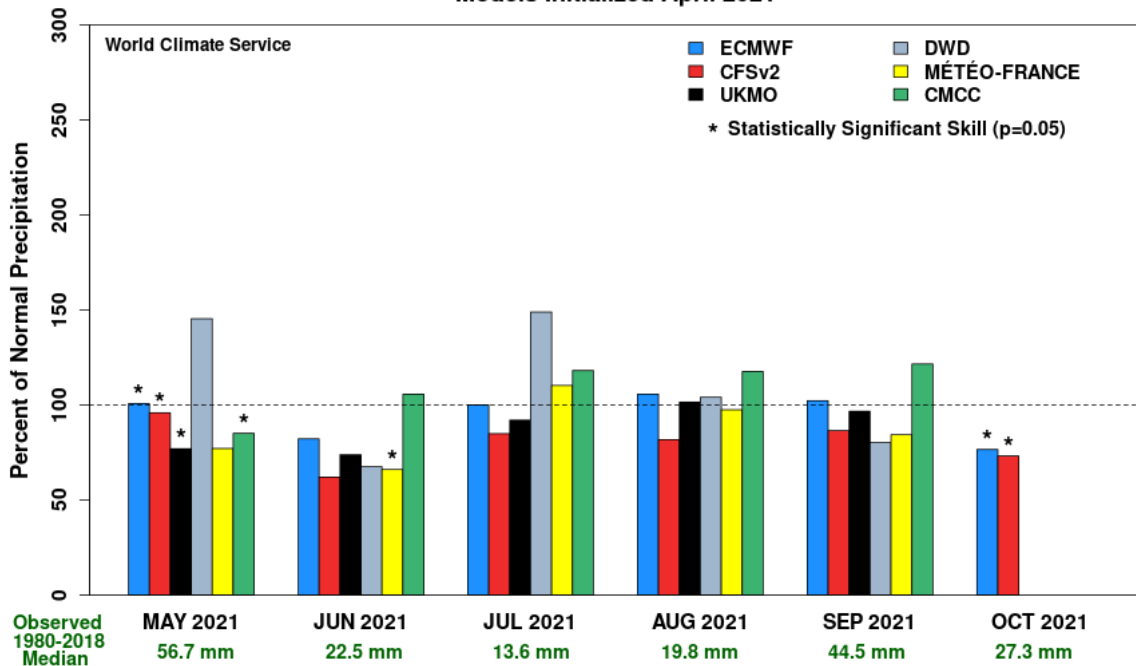


Weekly predicted rainfall anomaly (Horn of Africa and Yemen)



How to interpret the precipitation forecast charts. A value of 100 on the left axis indicates normal rainfall; values less than 100 indicates drier than normal conditions; more than 100 indicates wetter than normal. Little variation between models suggests greater confidence and reliability. An asterisk indicates the most reliable model in each month. When available, the historically best model during the entire forecast period in the region is indicated in the caption.

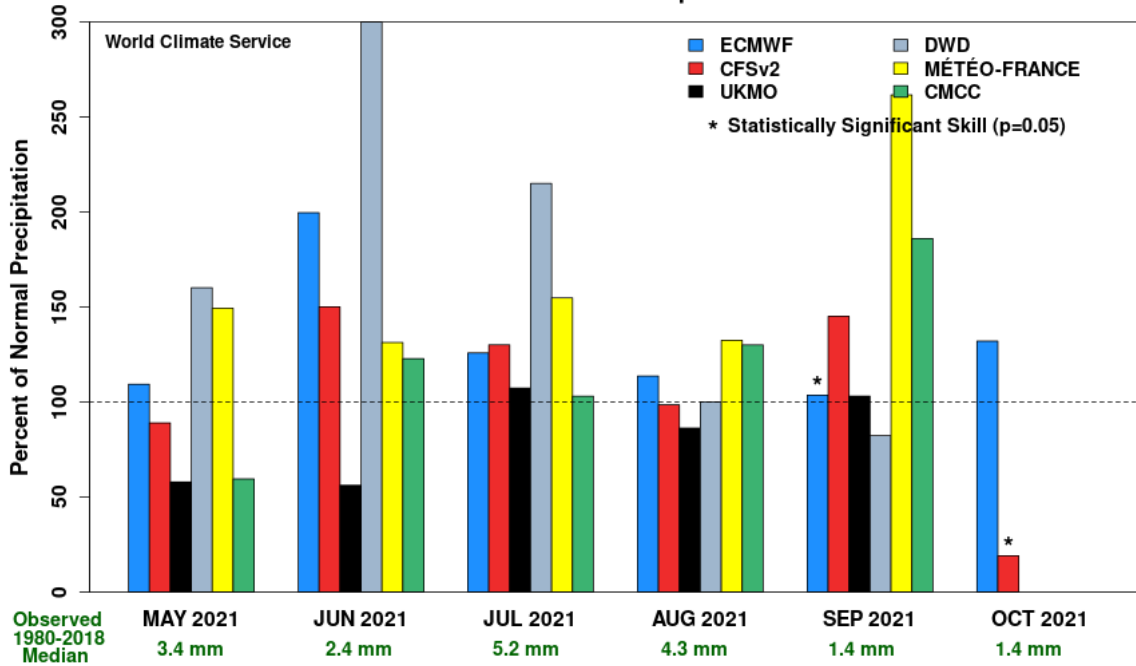
Precipitation Forecast Spring/Summer Breeding Region (Horn of Africa) Models Initialized April 2021



Spring/Summer breeding, May–October (Horn of Africa)

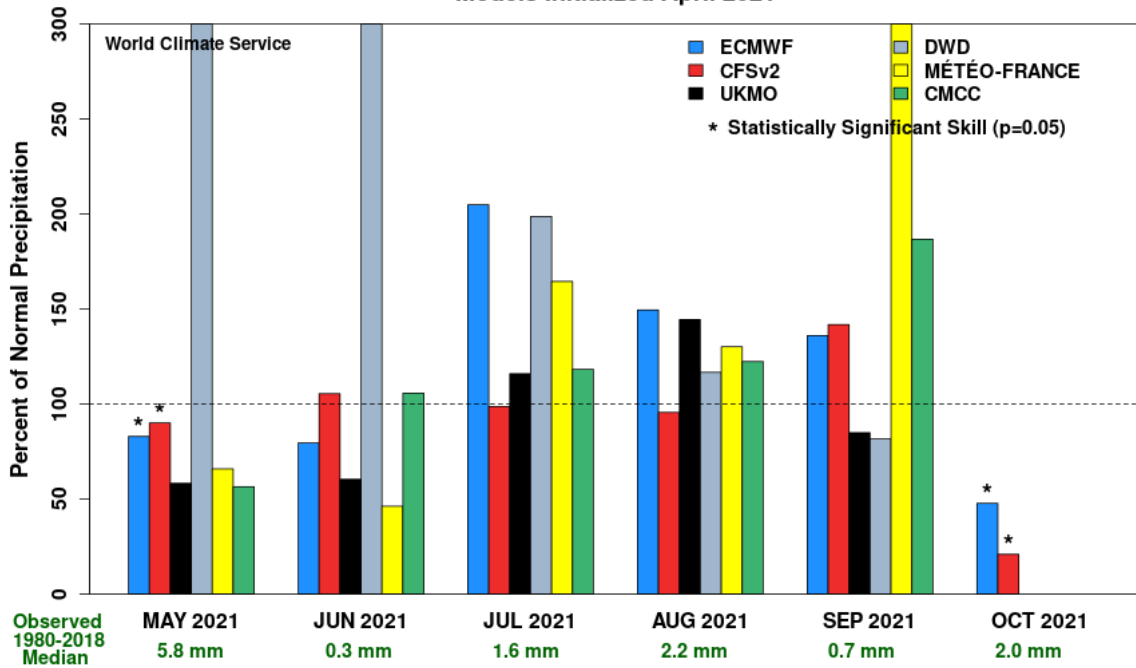
[Historically best: UKMO]

Precipitation Forecast
Spring Breeding Region (Eastern)
 Models Initialized April 2021



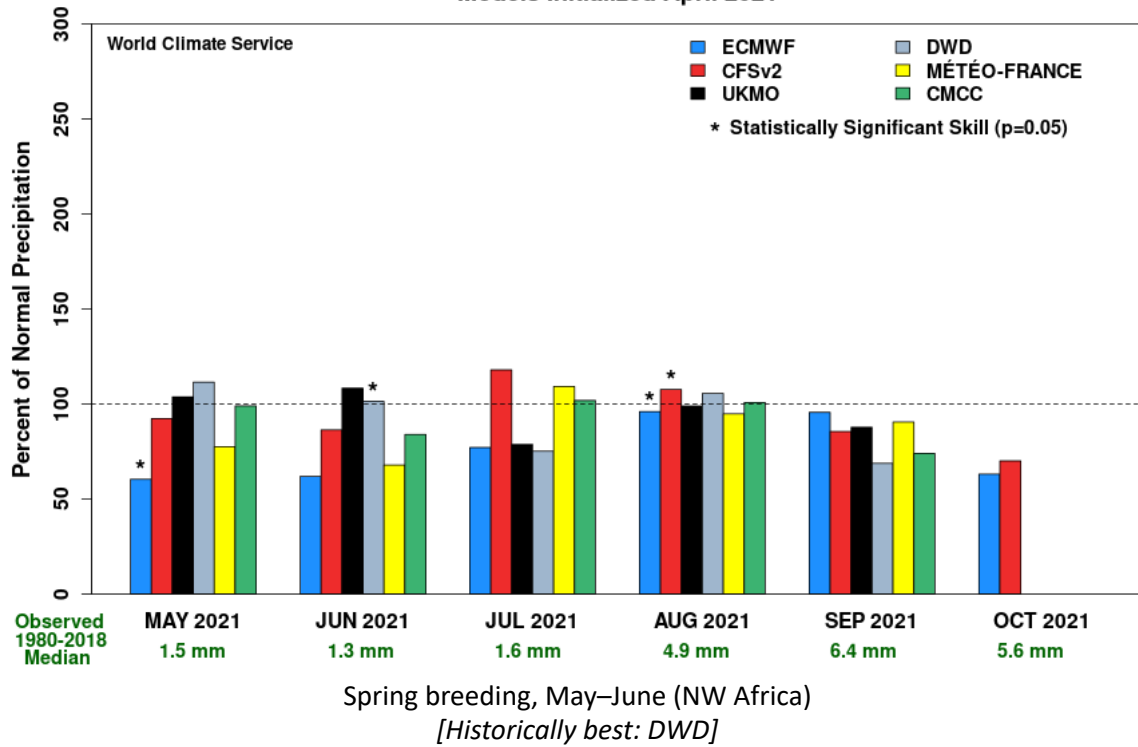
Spring breeding, May–June (southern Iran, SW Pakistan)
[Historically best: CFSv2]

Precipitation Forecast
Spring Breeding Region (Central)
 Models Initialized April 2021

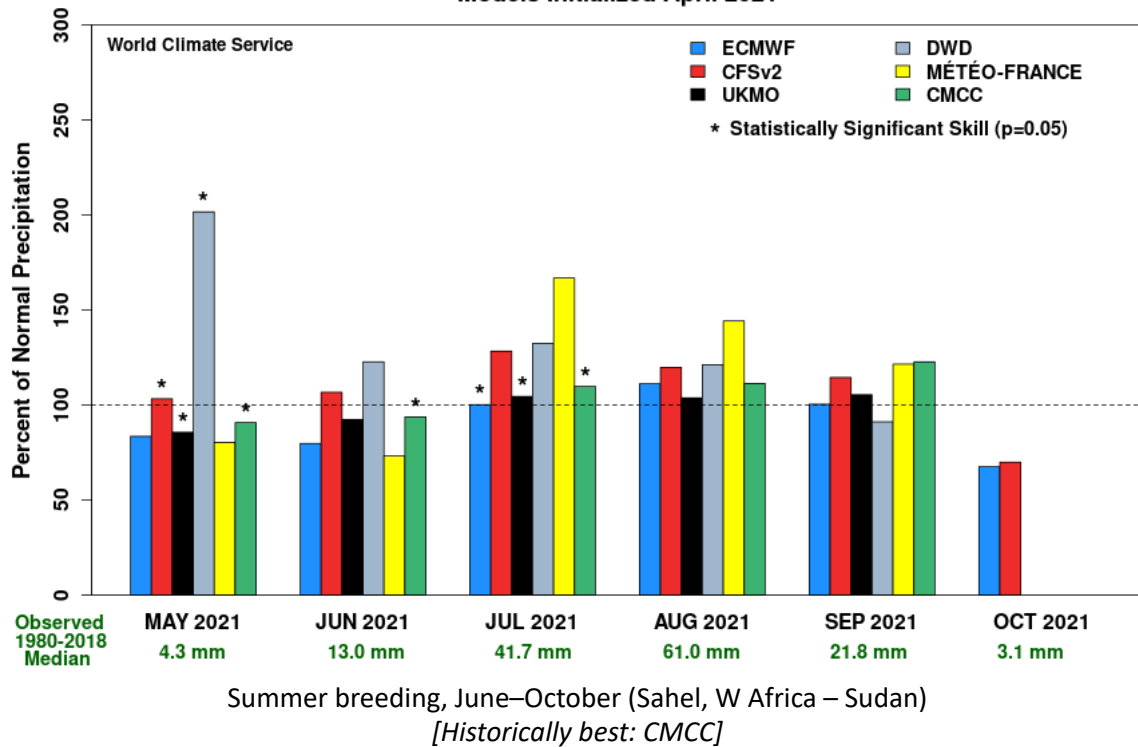


Spring breeding, May–June (Arabian Peninsula)
[Historically best: UKMO]

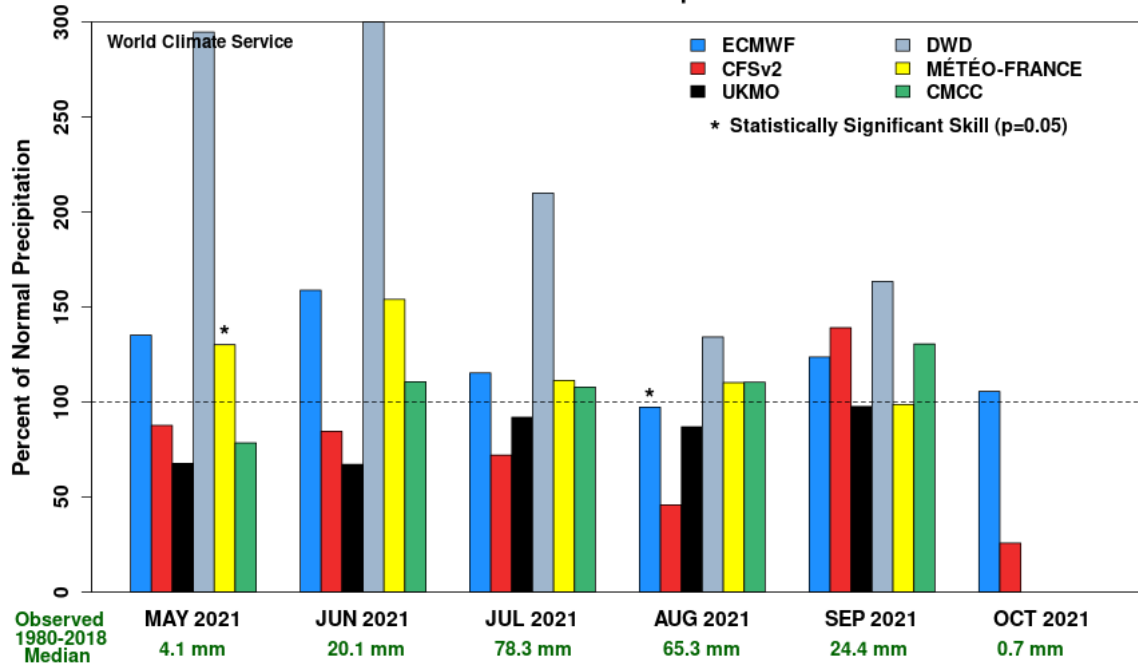
Precipitation Forecast
Spring Breeding Region (Western)
 Models Initialized April 2021



Precipitation Forecast
Summer Breeding Region (Western)
 Models Initialized April 2021



Precipitation Forecast
Summer Breeding Region (Eastern)
Models Initialized April 2021



Summer breeding, June–October (Indo–Pakistan)
[Historically best: MétéoFrance]