

# Price Monitoring and Analysis Country Brief

**Yemen**

September-December 2010

## Key Messages

- Still high wheat prices limit food access of poor people.
- Insecurity and attacks against the government continue; IDPs and refugees who face high levels of food insecurity need emergency food assistance.
- An estimated 2.7 million people are severely food insecure, but good prospects of increased cereal production and WFP food distribution can reduce food insecurity levels.
- Humanitarian assistance is extensively hampered by low funding.

## Background

In Yemen total population was 23,58 million with an annual growth rate of 2%. Although rural population is 68%, agricultural contribution to GDP is 14%. The proportion of undernourishment is reported at 31% of the population.

Economic Indicators	View Data
Total Population (millions) - 2009 (WB)	23.58
Population growth rate - 2009 (WB)	2%
GNI per capita, \$ PPP - 2009 (WB)	2330
Population below 1\$ PPP per day - 2005 (MDGI)	17%
Rural population - 2009 (WB)	68%
Agriculture, value added (% of GDP) - 2003 (WB)	14%

Food Consumption	
Undernourished Population - 2005/2007 (FAO)	31%
Cereal share in total dietary energy consumption - 2007 (FAO)	61%
Meat share in total dietary energy consumption - 2007 (FAO)	4%

Health Indicators	
Pop. with sustainable access to improved sanitation - 2008 (WHO)	52%
Life expectancy at birth (years) both sexes - 2008 (WHO)	64
Pop. with access to improved drinking water sources - 2008 (WHO)	62%
Prevalence of HIV among adults aged >= 15 years	n.a.

## Prices

As of Oct 2010, fuel and wheat prices in Sana'a have increased by 67% and 58% since January. In Nov, wheat prices in Sana'a stabilized and were some 6% higher than Nov 2009. The increases were partly due to the recent Russian export ban (Aug 2010) and due to the depreciation of the Riyal against the dollar that started early 2010. The current level of wheat prices is restricting access to food for poor households who depend on the market as a major staple food source. Governorates of most concern include: Shabwah, Lahj, Hadramout, Taizz, Al-Daleh, Sa'ada, Sana'a and Raimeh.

## Food Security Situation Assessment






Food insecure people were estimated to be 7.2 million, of which about 2.7 million were severely food insecure. WFP food distribution, which from October onwards increased the general food rations to 75% of the total basket, reached some 258,000 IDPs in Sa'ada, Hajjah and Amran governorates. WFP started the Emergency Food Safety Net aimed to assist 1.7 million people, but lack of funding has limited beneficiaries to 800,000 for this year's distribution cycle, covering five of the most food insecure governorates - Raima, Ibb, Hajja, Amran and Al-Dhala. GIEWS estimates severe localized food insecurity. FAO hunger map reports high undernourishment in the long term, while IFPRI describes the situation as alarming. FEWSNET argues that the likelihood of increased production can reduce food insecurity in Alhodaydah, Dhamar, and Hajjah.

### CURRENT EMERGENCY ASSESSMENT

			<a href="#">FAO/GIEWS CPFS 2010</a>
Exceptional shortfall in aggregate food production supplies	Widespread lack of access	Severe localized food insecurity	

Most cropping and pastoral areas in Yemen received timely normal to above-normal rainfall during the 2010 rainy season. This year's good seasonal rain has increased cereal production by 22 percent compared to last year and 30 percent compared to the ...[more](#) [FEWSNET](#)

### SCALE OF HUNGER (% of Undernourishment)

					<a href="#">FAO Hunger Map</a>
Very high (>= 35%)	High (25-34%)	Moderately high (15-24%)	Moderately low (5-14%)	Very low (< 5% under.)	

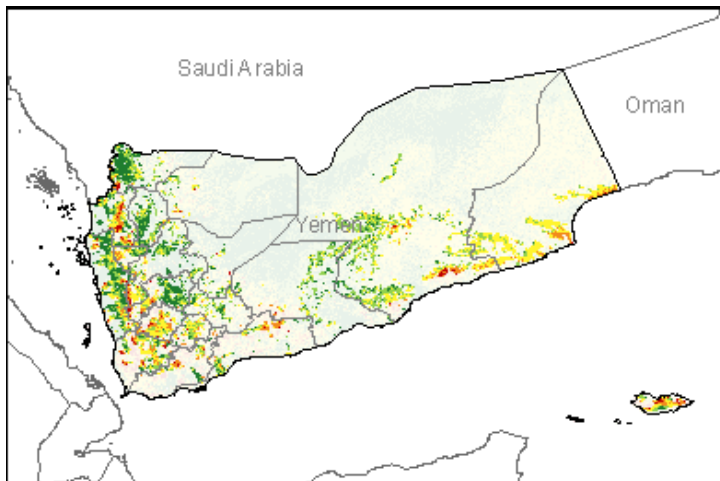
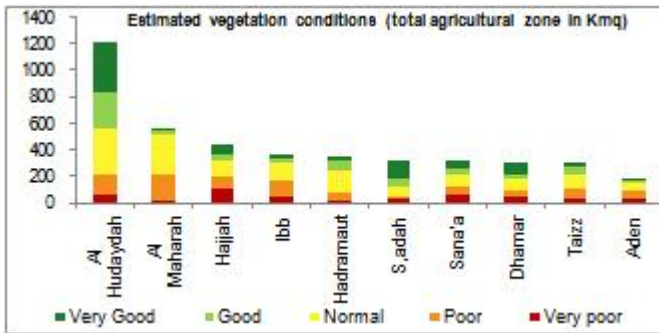
FAO Hunger Map classifies all countries of the world into five based on % of population undernourished.

					<a href="#">IFPRI/2010 GHI</a>
Extremely alarming	Alarming	Serious	Moderate	Low	

Information required to draw this chart is not available.

### Vegetation Condition

At this stage of the dry season, very contrasted situation is observed ranging from very poor to very good conditions. The general indicator of vegetation condition provided below is the relative difference between the NDVI for December 2010 and the average of the last 10 years, calculated on the agricultural zones derived from the GLOBCOVER 2005 database (ESA).



Source: JRC MARS – FoodSec

### Crop phase in the reference period

Sowing	No data available
Growing	No data available
Harvesting	No data available

### Natural Disasters, Drought and Conflicts

Clashes and fighting, as well as, tribal incidents have been reported in Southern Governorates of Shabwah and Abyan during September and October. In recent months recurrent attacks took place also in northern governorates of Saada, Al-Jawf and Amran. UNHCR estimates approximately 330,000 IDPs are still in camps in addition to about 236,000 refugees, the majority of whom are Somalis.

Refugees and IDPs	2007	2008	n.a.
Total in the country	195080	241000	n.a.
Total outside the country	78952	102250	252554

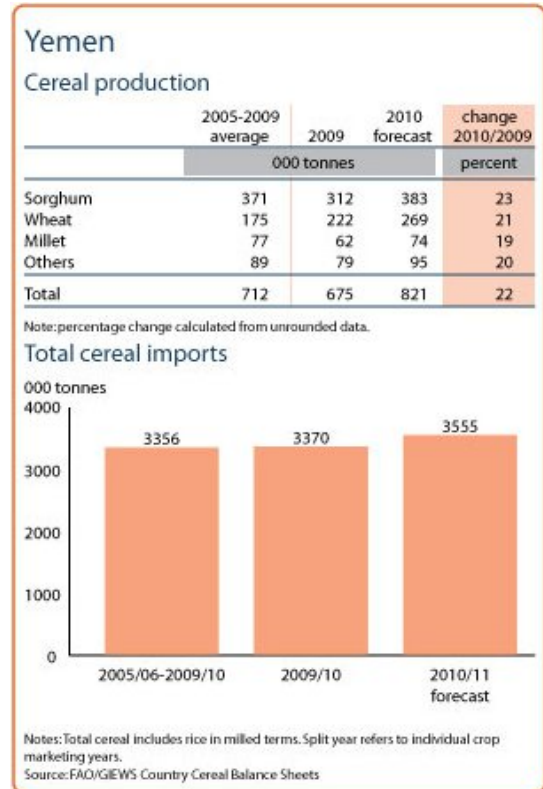
Source: UNHCR Statistical Online Population Database, United Nations High Commissioner for Refugees (UNHCR), Data extracted on 01/12/2010.

Disaster Type (last year)	Date	Location	Alert
Earthquake	2010-12-31	Lahij Province	1/3
Earthquake	2010-12-31	Lahij Province	1/3
Flood	2010-07-10	Northwest Yemen	1/3

Source: Global Disaster Alert and Coordination System - 3 = 1000 or more people killed or 800000 or more people displaced. 2 = 100 or more people killed or 80000 or more displaced.

### Food Balance Sheet

Substantial increase in cereal production was expected in 2010. Cereal production was projected at 821,000T, exceeding by 22 % the 2009 output (675,000T) and by 15% the average of the previous five years (712,000T). Cereal imports in 2010 marketing year (Jan/Dec) were estimated at about 3.5 million tonnes (mainly wheat and wheat flour), slightly above the previous year and the last five years average.



Source: GIEWS Country Briefs

### Government Policies

As the Government is engaged in fighting rebel militias, food security and agricultural programs are limited in Yemen. Agencies try to assist the population in need when it is possible even though funding constraints extremely hamper humanitarian work.

Consumer and market oriented measures	n.a.
Producer oriented measures	n.a.
Trade policy measures	n.a.
Safety net (increased or introduced)	Food assistance.

Different sources

### Current events to watch (Click to see the full report)

[SOMALIA: MIGRANTS FLEEING - ANOTHER TRAGEDY AT SEA](#)  
[Yemen: Somali refugees speak up about police harassment](#)  
[Are Yemen's protests going to bring another revolution?](#)  
[OCHA ROMENACA QUARTERLY REGIONAL HUMANITARIAN FUNDING ...](#)  
[INTERVIEW-Hunger stalks children in conflict-prone Yem...](#)

For more information, contact: [Information-for-action@fao.org](mailto:Information-for-action@fao.org)  
 Website: [www.foodsec.org](http://www.foodsec.org)

Powered By the [GIEWS Workstation](#)