

Price Monitoring and Analysis Country Brief

Burkina Faso

September 2011 - February 2012

Key Messages

- Food prices started their upward trend unseasonably increasing in December as a result of this year's reduced output. By January, the price for sorghum and millet had increased by more than 30% in major markets.
- The combination of low agricultural production and high food prices is triggering a food crisis situation whereby some 1.6 million people are at risk of food insecurity.
- Over 8,000 people have crossed the border from Mali into Burkina Faso aggravating the already dire food security situation particularly in northern part of the country where refugees are staying.
- The Government, together with the international humanitarian community is assisting the population with food emergency interventions and cash for work programs.

Background

The total population in Burkina Faso is about 16 million with an annual growth rate of 2%. Although rural population is about 80%, the contribution of agriculture to the GDP is around 33%. The proportion of undernourished population was estimated at 8%.

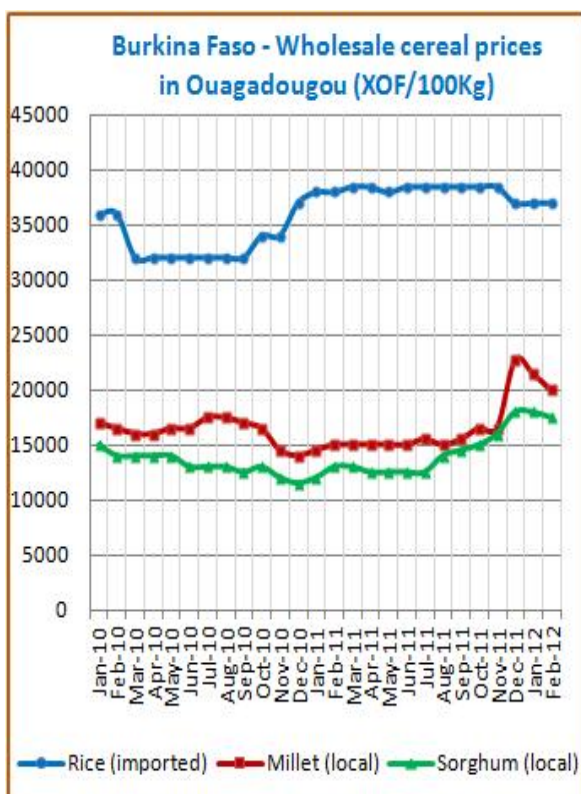
Economic Indicators	View Data
Total Population (millions) - 2010 (WB)	16.468
Population growth rate - 2010 (WB)	2%
GNI per capita, \$ PPP - 2010 (WB)	1250
Population below 1\$ PPP per day - 2003 (MDGI)	56%
Rural population - 2010 (WB)	79%
Agriculture, value added (% of GDP) - 2006 (WB)	33%

Food Consumption	
Undernourished Population - 2006/2008(FAO)	8%
Cereal share in total dietary energy consumption - 2007 (FAO)	73%
Meat share in total dietary energy consumption - 2007 (FAO)	3%

Health Indicators	
Pop. with sustainable access to improved sanitation - 2008 (WHO)	11%
Life expectancy at birth (years) both sexes - 2009 (WHO)	52
Pop. with access to improved drinking water sources - 2008 (WHO)	76%
Prevalence of HIV among adults aged >= 15 years - 2009 (WHO)	1.2%

Prices

Sorghum prices in Ouagadougou increased between September 2011 and January 2012 by 24% and only slightly declined (3%) in February to 175 CFA/Kg; this is some 35% above the price of February 2011. Millet prices also steeply increased (47%) from September to December, but then they fell by 12% and were 200 CFA/Kg in February 2012, which is still 33% above the ones recorded in February 2011. Prices of imported rice in Ouagadougou are stable at around 370 CFA/Kg since December; while, in February were some 41% above the international price of Rice Thai A1 Super.



Source: GIEWS Country Briefs

Food Security Situation Assessment

Following erratic rains and poor harvests, the country is currently facing a food crisis. The SAP survey reports that some 1.67 million people are vulnerable to food insecurity, mainly in northern and central areas. WFP has scaled up its operations to support the national response plan. The Food and Cash for Work activities have been scaled up thanks to a donation made by ECHO of around US\$ 880,000. In December, GIEWS estimated exceptional shortfalls in food production, FEWSNET in November reported that the situation was worsening to Crisis levels (IPC Phase 3). GIEWS reports shortfall in food supply. FAO estimates moderately low undernourishment levels while IFPRI describes a serious hunger problem.

CURRENT EMERGENCY ASSESMENT

Exceptional shortfall in aggregate food production supplies	Widespread lack of access	Severe localized food insecurity	FAO/GIEWS CPFS 2011
---	---------------------------	----------------------------------	-------------------------------------

Over 80 percent of households are now arriving to cover their basic needs without resorting to negative coping strategies. ... [more](#) [FEWSNET](#)

SCALE OF HUNGER (% of Undernourishment)

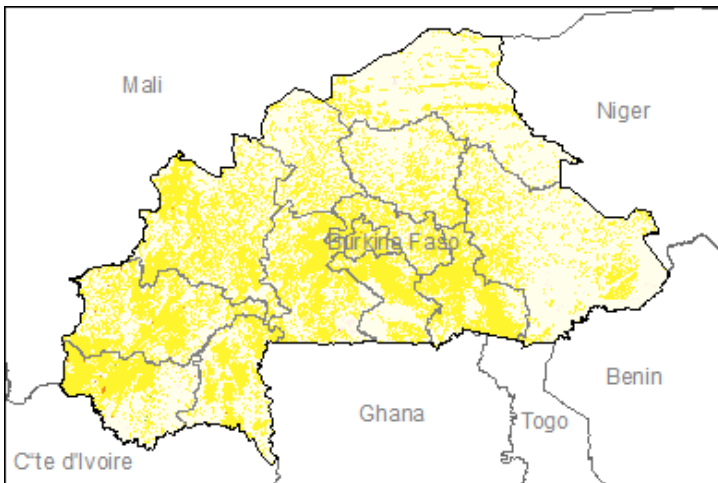
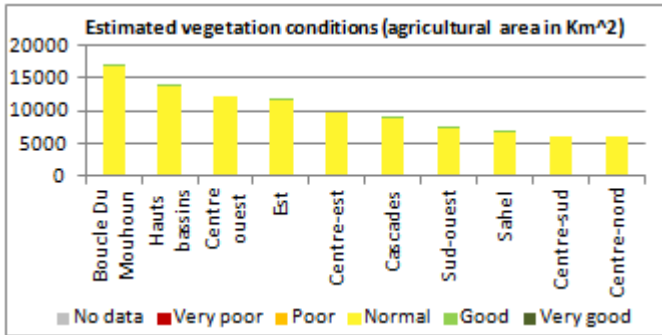
Very high (>= 35%)	High (25-34%)	Moderately high (15-24%)	Moderately low (5-14%)	Very low (< 5% under.)	FAO Hunger Map
--------------------	---------------	--------------------------	------------------------	------------------------	--------------------------------

FAO Hunger Map classifies all countries of the world into five based on % of population undernourished.

Extremely alarming	Alarming	Serious	Moderate	Low	IFPRI/2011 GHI
--------------------	----------	---------	----------	-----	--------------------------------

Vegetation Condition

According to the reference cropping calendars, at the moment this area is out of cropping season. Normal conditions are observed throughout the country. The general indicator of vegetation condition provided below is the absolute difference between the NDVI for February 2012 and the average of the last 10 years, calculated on the agricultural zones derived from the CUI and LULC datasets (USGS, 1988 and 2000).



Source: JRC MARS – FoodSec

Crop phase in the reference period

Sowing	Rice
Growing	Rice
Harvesting	Maize - Millet

Natural Disasters, Drought and Conflicts

Violence that resumed in late January between Tuareg rebels and Government of Mali armed forces, caused displacement of some 36,000 people into neighbor countries, with some 8,000 fleeing to Burkina Faso, as stated by UNHCR. These people are staying mainly in makeshift camps in the north of the country where the food security situation is worst.

Refugees and IDPs	2008	2009	2010
Total in the country	1161	1058	1065
Total outside the country	1042	1367	1643

Source: UNHCR Statistical Online Population Database, United Nations High Commissioner for Refugees (UNHCR), Data extracted on 01/03/2012.

Food Balance Sheet

The official estimate of the 2010/11 production put cereal output at 4.6 million tonnes, an increase of 28% over the drought affected crop in 2009/10 and well above the five-year average. Forecast for 2011 put production at 4.1 mlnT, some 10% below 2010 output. Import requirements for the 2010/11 marketing year (November/October) were estimated at some 330,000 tonnes, while the previous year imports amounted to 380,000 tonnes.

Burkina Faso Cereal production				
	2006-2010 average	2010	2011 estimate	change 2011/2010
	000 tonnes			percent
Sorghum	1 682	1 990	1 634	-18
Millet	1 103	1 148	906	-21
Maize	889	1 133	993	-12
Others	190	289	291	1
Total	3 863	4 560	3 824	-16

Note: percentage change calculated from unrounded data.
Source: FAO/GIEWS Country Cereal Balance Sheets

Source: GIEWS Country Briefs

Government Policies

The government recently purchased 800mt of grain which will be added to 6,500 mt of the intervention stock and 24,000 tons of the national security stock. Subsidized sales by the government and targeted free distribution by development partners have started in the affected areas.

Consumer and market oriented measures	Subsidized grain sales; Build up stocks
Producer oriented measures	n.a.
Trade policy measures	n.a.
Safety net (increased or introduced)	Food distribution

Different sources

Current events to watch (Click to see the full report)

- [Burkina Faso: Sahel Crisis Update No.10](#)
- [Niger \(the\): Point sur la situation alimentaire au Sah...](#)
- [Niger \(the\): British Red Cross launches West Africa Fo...](#)
- [Mali: Number of people displaced by Mali conflict rise...](#)
- [Burkina Faso: USAID/DCHA Sahel Food Insecurity Fact Sh...](#)

For more information, contact: Information-for-action@fao.org
Website: www.foodsec.org

Powered By the **GIEWS Workstation**