



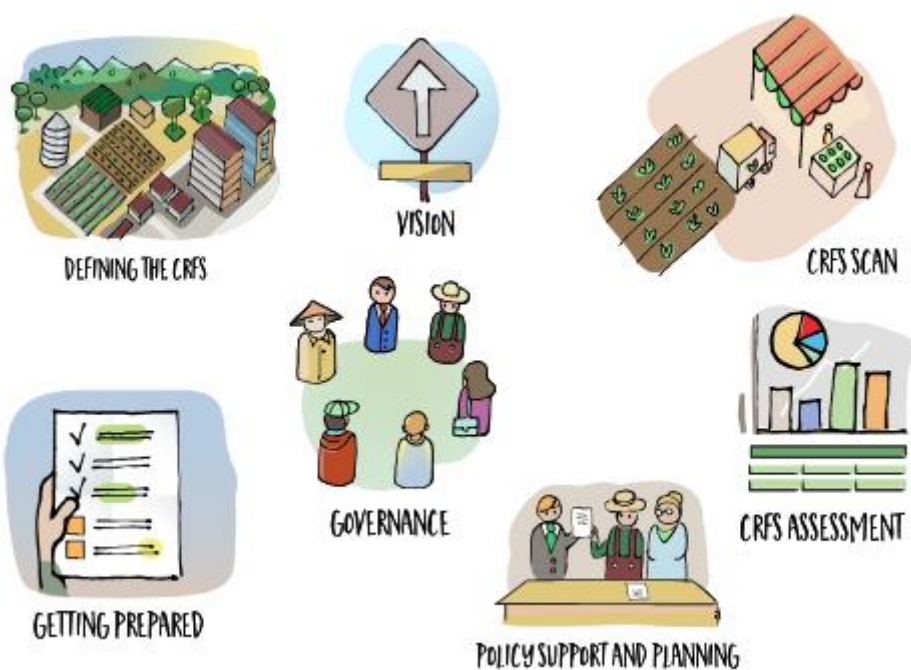
Food and Agriculture
Organization of the
United Nations



City Region Food System Toolkit

Assessing and planning sustainable city region food systems

CITY REGION FOOD SYSTEM TOOLKIT TOOL/EXAMPLE



Published by the Food and Agriculture Organization of the United Nations
and
RUAF Foundation
and
Wilfrid Laurier University, Centre for Sustainable Food Systems

May 2018

With support from



by decision of the
German Bundestag



fondation
daniel & nina carasso
sous l'égide de la Fondation de France





City Region Food System Toolkit

Assessing and planning sustainable city region food systems

Tool/Example:

Agri-food Processing Clusters Map

Author(s): Government of Ontario¹

Project: RUAF – Wilfrid Laurier CityFoodTools

Introduction to the joint programme

This tool is part of the City Region Food Systems (CRFS) toolkit to assess and plan sustainable city region food systems. The toolkit has been developed by FAO, RUAF Foundation and Wilfrid Laurier University with the financial support of the German Federal Ministry of Food and Agriculture and the Daniel and Nina Carasso Foundation.

Link to programme website and toolbox

<http://www.fao.org/in-action/food-for-cities-programme/overview/what-we-do/en/>

<http://www.fao.org/in-action/food-for-cities-programme/toolkit/introduction/en/>

<http://www.ruaf.org/projects/developing-tools-mapping-and-assessing-sustainable-city-region-food-systems-cityfoodtools>

Tool summary:

Brief description	The 'Agri-food processing business cluster in southern Ontario' map an example of how to display places where processing firms group together.
Expected outcome	Improved understanding of where food processing businesses have agglomerated and where resources are concentrated or missing.
Expected Output	Map depicting the concentration of food processing businesses.
Scale of application	Project level
Expertise required for application	Project management
Examples of application	Toronto and Greater Golden Horseshoe
Year of development	2015
References	-

Tool description:

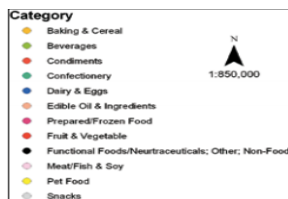
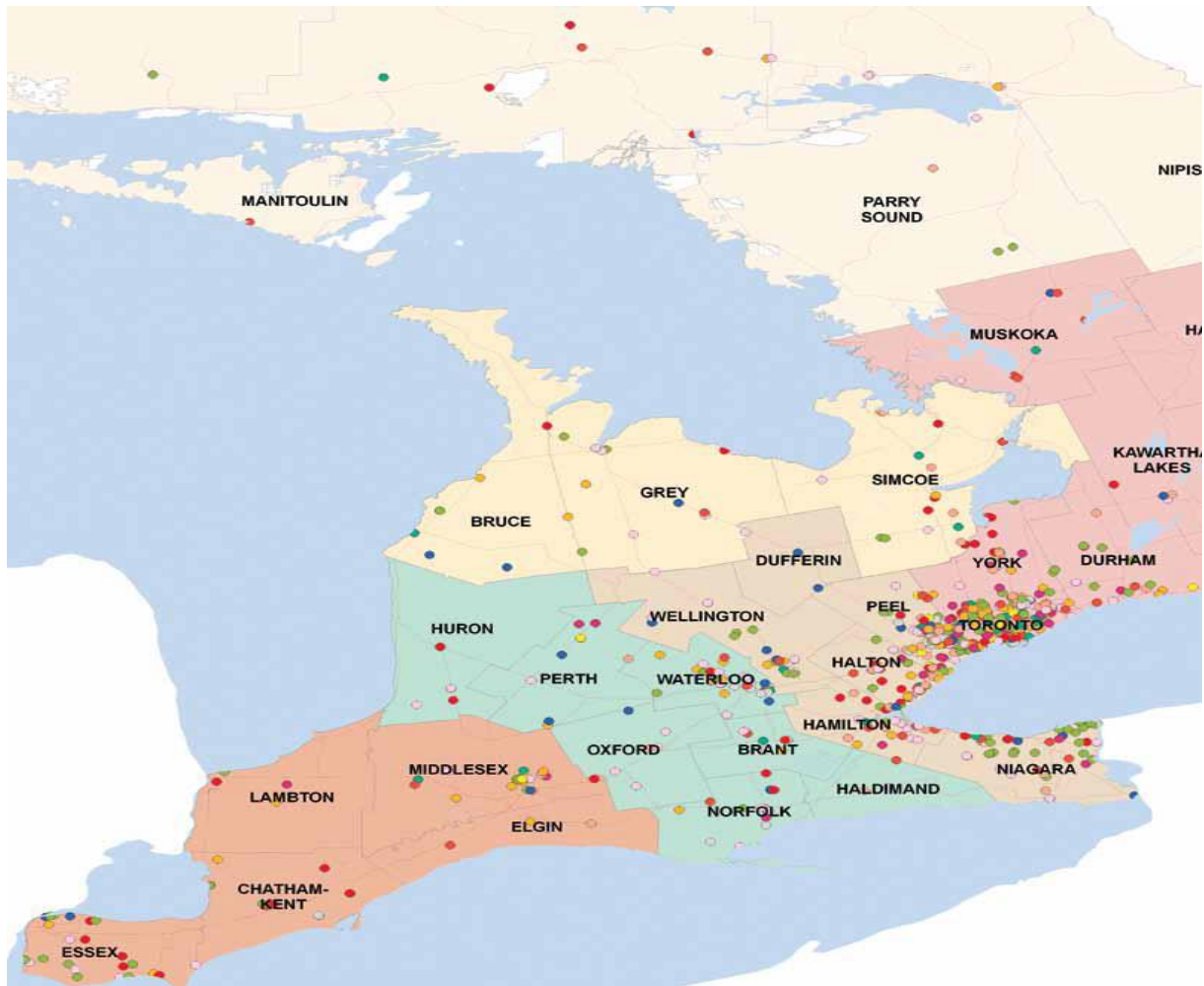
The 'Agri-food processing business cluster in southern Ontario' map an example of how to display places where processing firms group together. Population density and access to transportation corridors influence the location of these businesses.

¹ From the 'A Global Hub for Food Processing: Agri-Food Asset Map' Retrieved from <http://www.ontla.on.ca/library/repository/mon/25007/311349.pdf>



City Region Food System Toolkit

Assessing and planning sustainable city region food systems



(Source: Government of Ontario)

With support from



by decision of the
German Bundestag



fondation
daniel & nina carasso
sous l'égide de la Fondation de France

