



Food and Agriculture
Organization of the
United Nations

LAURIER
Inspiring Lives.

RUAF FOUNDATION

City Region Food System Toolkit
Assessing and planning sustainable city region food systems

CITY REGION FOOD SYSTEM TOOLKIT

TOOL/EXAMPLE



Published by the Food and Agriculture Organization of the United Nations
and
RUAF Foundation
and
Wilfrid Laurier University, Centre for Sustainable Food Systems

May 2018

With support from



by decision of the
German Bundestag



fondation
daniel & nina carasso
sous l'égide de la Fondation de France





City Region Food System Toolkit

Assessing and planning sustainable city region food systems

Tool/Example:

CRFS Scan: Priorities and next steps

Author(s): Sally Miller, Toronto CRFS Project Coordinator

Project: RUAF – Wilfrid Laurier CityFoodTools

Introduction to the joint programme

This tool is part of the City Region Food Systems (CRFS) toolkit to assess and plan sustainable city region food systems. The toolkit has been developed by FAO, RUAF Foundation and Wilfrid Laurier University with the financial support of the German Federal Ministry of Food and Agriculture and the Daniel and Nina Carasso Foundation.

Link to programme website and toolbox

<http://www.fao.org/in-action/food-for-cities-programme/overview/what-we-do/en/>

<http://www.fao.org/in-action/food-for-cities-programme/toolkit/introduction/en/>

<http://www.ruaf.org/projects/developing-tools-mapping-and-assessing-sustainable-city-region-food-systems-cityfoodtools>

Tool summary:

Brief description	This powerpoint presentation provides a brief overview of the methodology followed in the Toronto city region in implementing the CRFS Scan and Assessment.
Expected outcome	The presentation highlights how CRFS activities feed into a policy support process and so enables decision-making about next steps in the CRFS research.
Expected Output	Improved decision making about policy gaps and assets for sustainable food systems.
Scale of application	Project level
Expertise required for application	Project management
Examples of application	Toronto and Greater Golden Horseshoe
Year of development	2015
References	-

Tool description:

This powerpoint presentation provides a brief overview of the methodology followed in the Toronto city region in implementing the CRFS Scan and Assessment. The presentation also highlights how these activities are feeding into a policy support process.





Food and Agriculture
Organization of the
United Nations



City Region Food System Toolkit

Assessing and planning sustainable city region food systems

Toronto City Region Food Systems (CRFS) project



Supporters and partners



Social Sciences and Humanities
Research Council of Canada

Conseil de recherches en
sciences humaines du Canada



Food and Agriculture
Organization of the
United Nations

With support from



by decision of the
German Bundestag





City Region Food System Toolkit

Assessing and planning sustainable city region food systems

Overview of presentation



1. CRFS Assessment: Methodology and tools
2. Results CRFS Scan and in-depth assessment
3. Policy support and planning



1. Methodology: Identification of region and vision



Vision: Healthy food for all, sourced as regionally as possible, and as sustainably produced, processed, packaged, and distributed as possible



City Region Food System Toolkit

Assessing and planning sustainable city region food systems

1. Methodology: Stakeholder engagement



- CRFS Multi-stakeholder Task Force
- Key stakeholder interviews
- Presentations
- Dissemination of reports
- Discussion groups



1. Methodology: CRFS Scan: Secondary research

Legend			
1. Indicator with no clear data source			
2. Indicator with one or more data source or public information			
3. Indicator that is critical with one or more data sources			
4. Indicator that is critical and has no data source			
4) Food marketing, catering, retail	Diversity of opportunities for food marketing, catering and retail businesses	Economic value of food retail and catering in the city region	Status of environmental resource efficiency
Type, number and geographic location/spread of different food retail outlets in the city region	Number of food retail related jobs and businesses per 100 000 population <i>Toronto only</i>	Food waste production (volumes/share) and management in i) retail and ii) catering <i>General by industry/ food system area</i>	
Type, number and geographic location/spread of different catering/ restaurant outlets in the city region	Number of catering related jobs and businesses per 100 000 population <i>Toronto only</i>	Waste water production (volumes/share) and management in i) retail and ii) catering <i>General by industry/ food system area</i>	
Diversity in food retail in the city region (for selected food products)	Level of wages paid and number of workers in i) retail & ii) catering <i>Toronto only</i>	Usage levels of clean/unclean water <i>General water usage by industry/ food system area</i>	
Extent of food deserts Food deserts are defined as urban neighbourhoods and rural towns without ready access to fresh, healthy, and affordable food	Total number of retail and catering outlets buying directly from farms	Carbon and water foot prints in food retail and catering	
Availability of healthy food choices (for different wealth classes)	Number of institutions purchasing local food	Carbon foot prints for different types of food i) retail and ii) catering	
Affordability of healthy food choices (for different wealth classes)	Type of food categories/volumes of local food procured	Water foot prints for different types of food i) retail and ii) catering	

- Review of existing data
- Inventory of possible indicators
- Comparison of indicator list to existing research

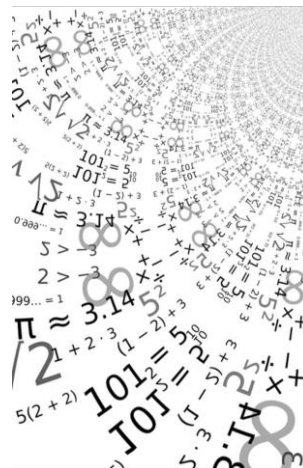


City Region Food System Toolkit

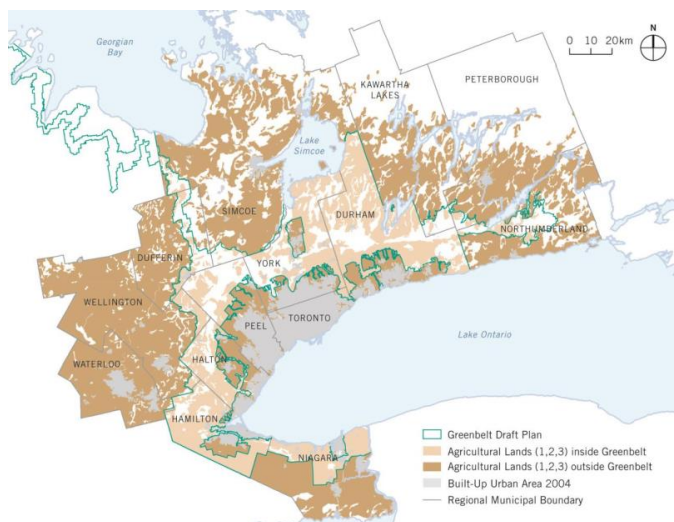
Assessing and planning sustainable city region food systems

1. Methodology: CRFS Scan- Tools

- Census of agriculture
- Statistics Canada
 - Import/ export tables
 - Community Health Survey
 - Consumption data
- Secondary research on economic, environment, social measurements of food system



Research Challenges



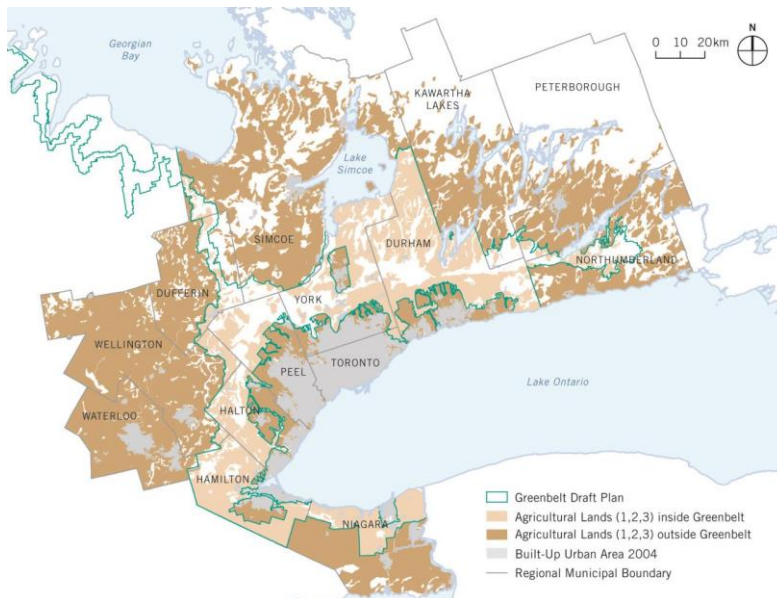
- Gaps in census data
- Complexity of import export flows
- Aggregated data differed from research area
- Broad region and food system issues



City Region Food System Toolkit

Assessing and planning sustainable city region food systems

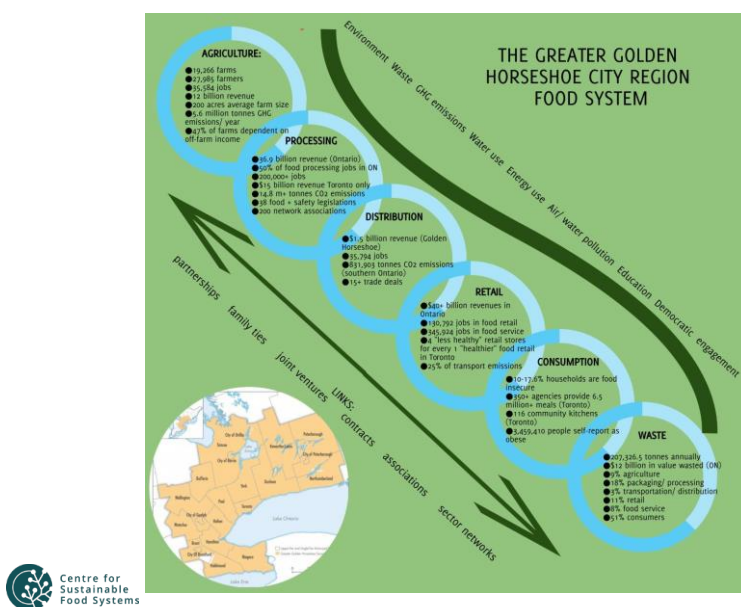
Research Solutions



- Key sectors
- Focus on inclusion of all food system areas
- Focus on indicators of change
- Identification of critical themes



2. CRFS Scan: Results



With support from



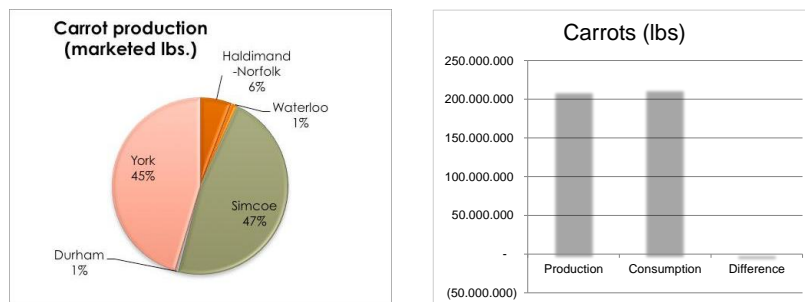
by decision of the
German Bundestag



City Region Food System Toolkit

Assessing and planning sustainable city region food systems

2. CRFS Scan results: Food flows



3. Methodology: CRFS Assessment- primary research



- Presentations (8)
- Interview participants (80)
- Group discussions (18)



City Region Food System Toolkit

Assessing and planning sustainable city region food systems

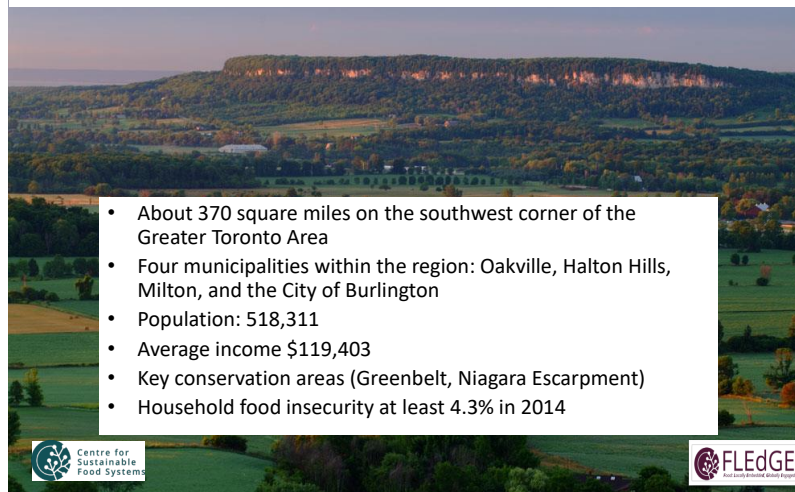
3. CRFS Assessment priority research areas



- Regional food flows
- Labour and work quality
- Waste
- Democratic engagement
- Education



4. CRFS Assessment results: Halton region cluster analysis



City Region Food System Toolkit

Assessing and planning sustainable city region food systems

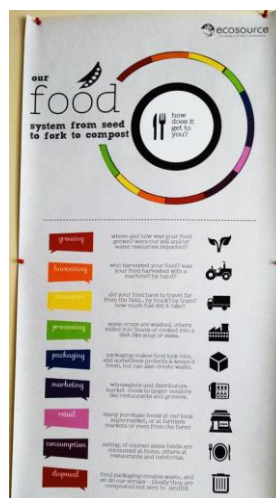
5. Policy support and planning: recommendations

- #1 Develop and support for transition to mid-scale infrastructure (regional processing, distribution, marketing)
- #2 Establish financial resources that support a range of scales and stages
- #3 Establish scale-appropriate regulations and feasibility assessments for mid-scale infrastructure like regional food hubs
- #4 Increase research and educational opportunities directed at regional agriculture and regional infrastructure needs linked to shorter supply chains
- #5 Provide sufficient social assistance, through a guaranteed income or other measures, to ensure that everyone can afford to eat healthy food
- #6 Establish a national food policy and a national school food policy
- #7 Ensure widespread formalization and implementation of public procurement policies for local food (with percentages and budgets to meet policy goals)
- #8 Revise the labour practices, government support and subsidy programs to ensure the necessary skilled labour for all food system areas with tenure security and fair compensation for work



5. Policy support and planning: Next steps

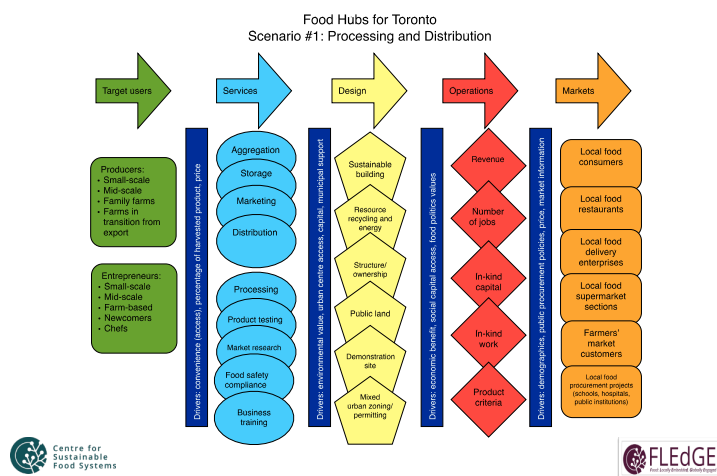
- Scenario building
- Mid-scale infrastructure focus
 - Integrated food system areas
 - Equipment, facilities
 - Finances
 - Regulations
 - Planning, permitting, zoning
 - Human resources
 - Diversity and inclusion
 - Environmental goods



City Region Food System Toolkit

Assessing and planning sustainable city region food systems

5. Policy support and planning: next steps



Thank you!



Sally Miller/ sallyemiller@gmail.com/ CRFS Project/
Centre for Sustainable Food Systems, Wilfrid Laurier University
RUAF Foundation/ Carasso Foundation

