



Food and Agriculture
Organization of the
United Nations

LAURIER
Inspiring Lives.

RUAF FOUNDATION

City Region Food System Toolkit

Assessing and planning sustainable city region food systems

CITY REGION FOOD SYSTEM TOOLKIT TOOL/EXAMPLE



Published by the Food and Agriculture Organization of the United Nations
and
RUAF Foundation
and
Wilfrid Laurier University, Centre for Sustainable Food Systems

May 2018

With support from



by decision of the
German Bundestag



fondation
daniel & nina carasso
sous l'égide de la Fondation de France



City Region Food System Toolkit

Assessing and planning sustainable city region food systems

Tool/Example:

Thematic mapping of CRFS

Author(s): FAO

Project: FAO Food for the Cities programme

Introduction to the joint programme

This tool is part of the City Region Food Systems (CRFS) toolkit to assess and plan sustainable city region food systems. The toolkit has been developed by FAO, RUAF Foundation and Wilfrid Laurier University with the financial support of the German Federal Ministry of Food and Agriculture and the Daniel and Nina Carasso Foundation.

Link to programme website and toolbox

<http://www.fao.org/in-action/food-for-cities-programme/overview/what-we-do/en/>

<http://www.fao.org/in-action/food-for-cities-programme/toolkit/introduction/en/>

<http://www.ruaf.org/projects/developing-tools-mapping-and-assessing-sustainable-city-region-food-systems-cityfoodtools>

Tool summary:

Brief description	This tool provides better visualization and understanding of CRFS and its spatial distribution and dynamics to policy makers.
Expected outcome	CRFS mapping
Expected Output	Maps
Scale of application	Project level
Expertise required for application	GIS, spatial data management
Examples of application	Kitwe and Lusaka (Zambia); Colombo (Sri Lanka)
Year of development	
References	-

Tool description:

This tool helps policy makers understanding how the CRFS is spatially and geographically characterized. The data collected in the assessments are georeferenced and mapped for planners to better visualise and understand the CRFS and its spatial distribution and dynamics.

Maps are used to represent:

- the production areas of the main commodities;
- the location of the retail and wholesale markets;
- distance to markets;
- the transportation network;
- the spread of food insecurity and poverty in the city region, possibly crossed with other criteria such as location of markets and urban agriculture areas in the city
- food flows of the main commodities;

With support from



by decision of the
German Bundestag



City Region Food System Toolkit

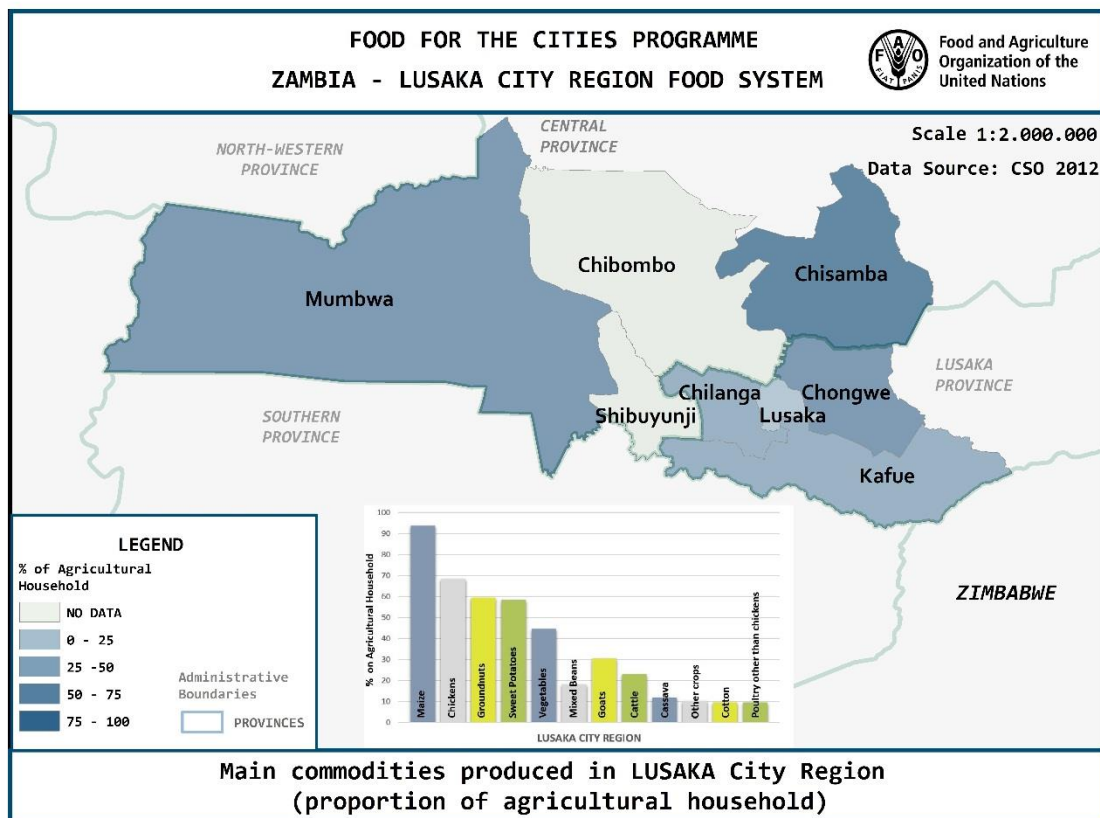
Assessing and planning sustainable city region food systems

- land use change.

Examples of application

Lusaka

Spread of agricultural household and main commodities produced in the CRFS: (Source: FAO)



Crop production and livestock breeding per district: (Source: FAO)

With support from



by decision of the
German Bundestag

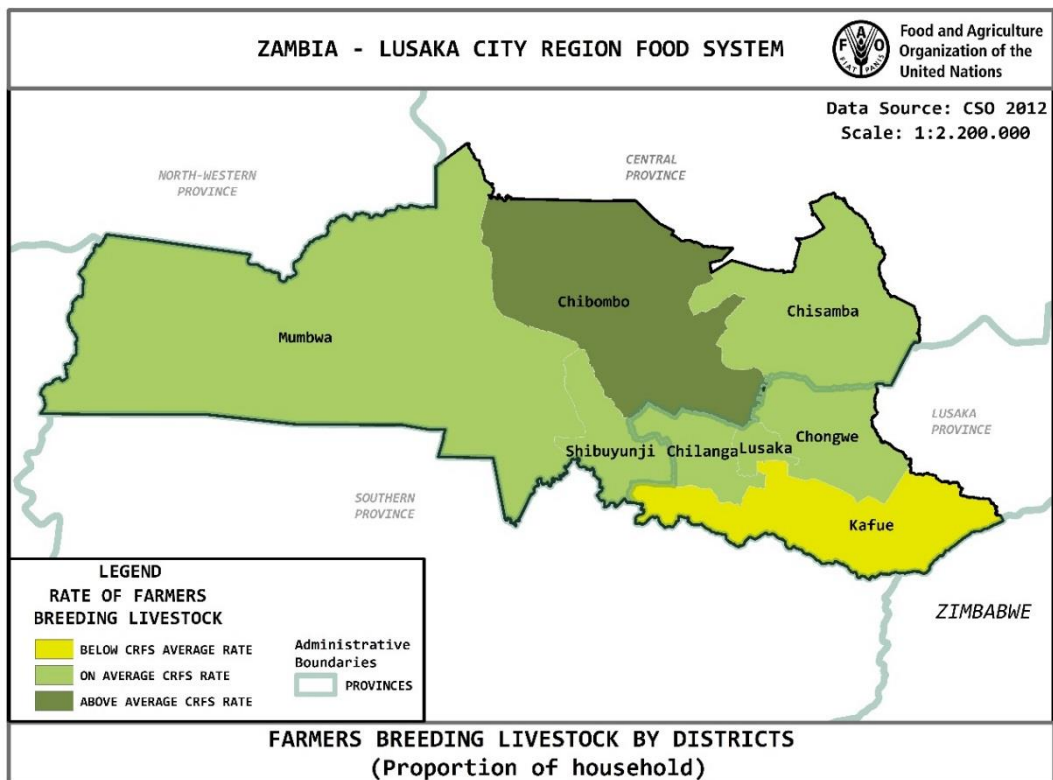
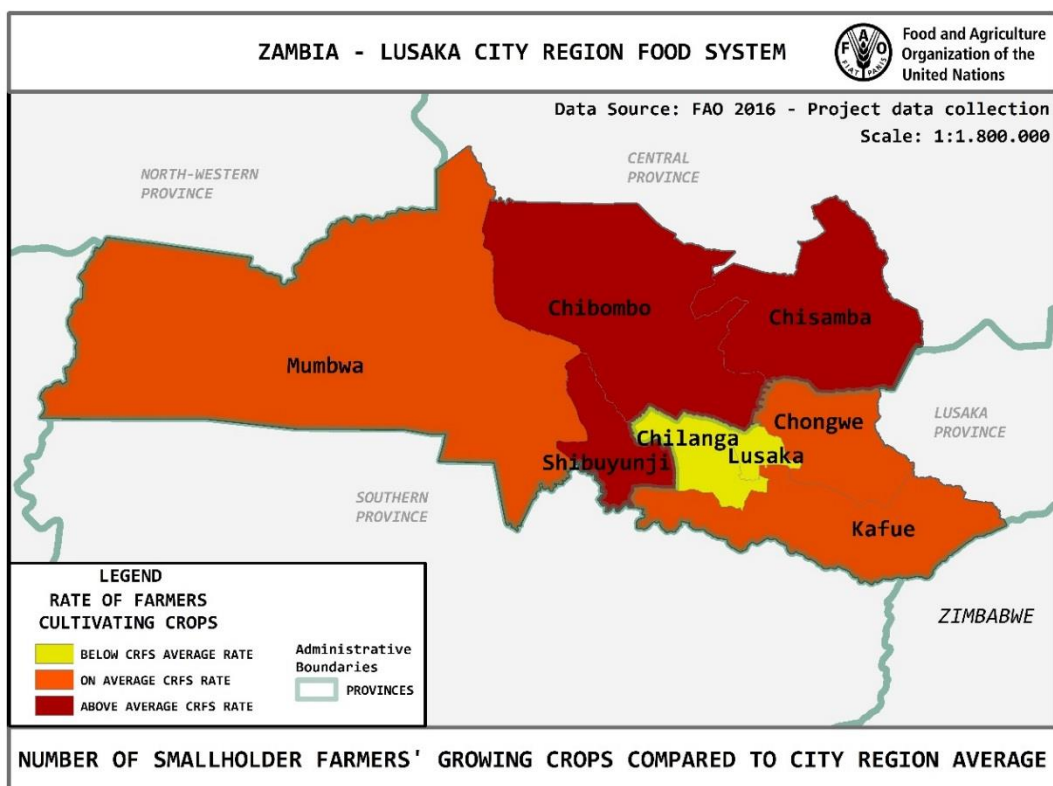


fondation
daniel & nina carasso
sous l'égide de la Fondation de France



City Region Food System Toolkit

Assessing and planning sustainable city region food systems



Kitwe

Average distance to markets – vegetables : (Source: FAO)

With support from



by decision of the
German Bundestag

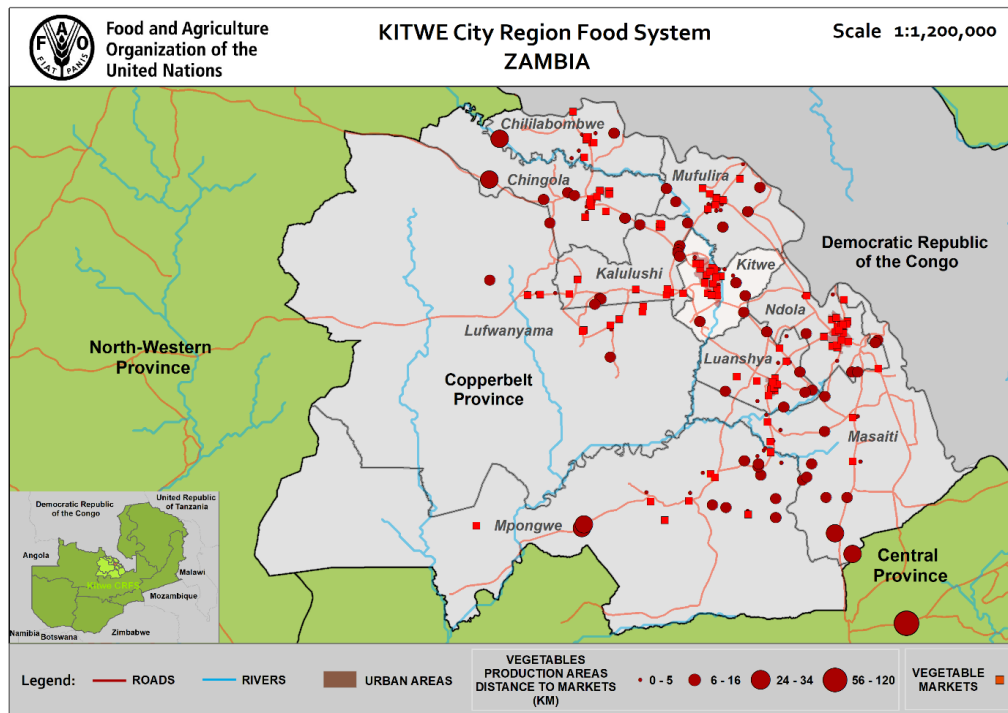


fondation
daniel & nina carasso
sous l'égide de la Fondation de France

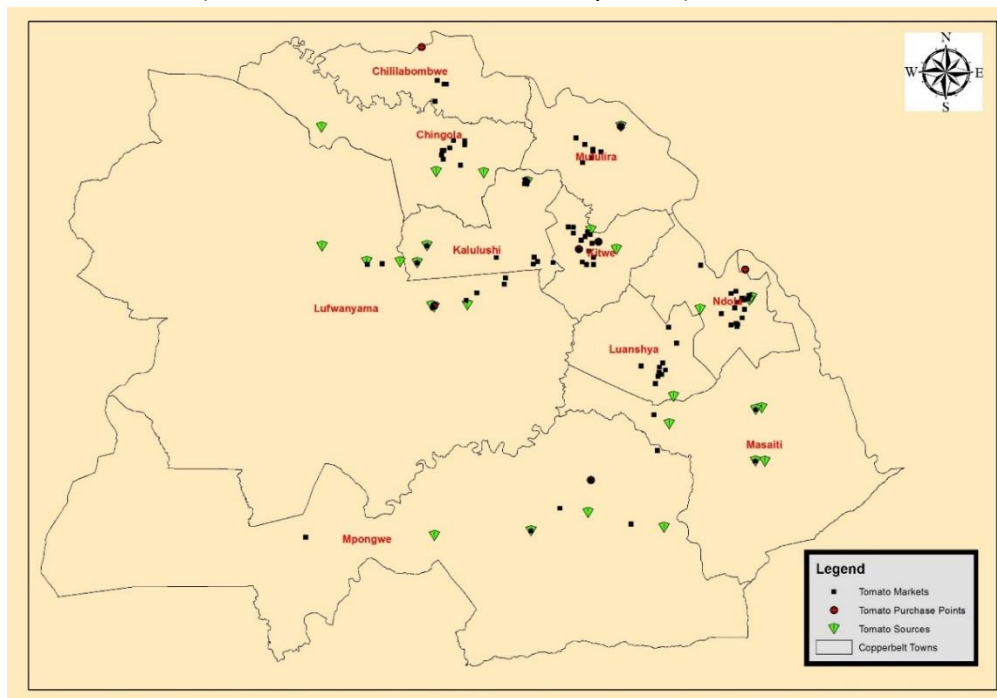


City Region Food System Toolkit

Assessing and planning sustainable city region food systems



Sources and market places for key commodities:
Tomatoes (Source: Lusaka CRFS Workshop 2015)

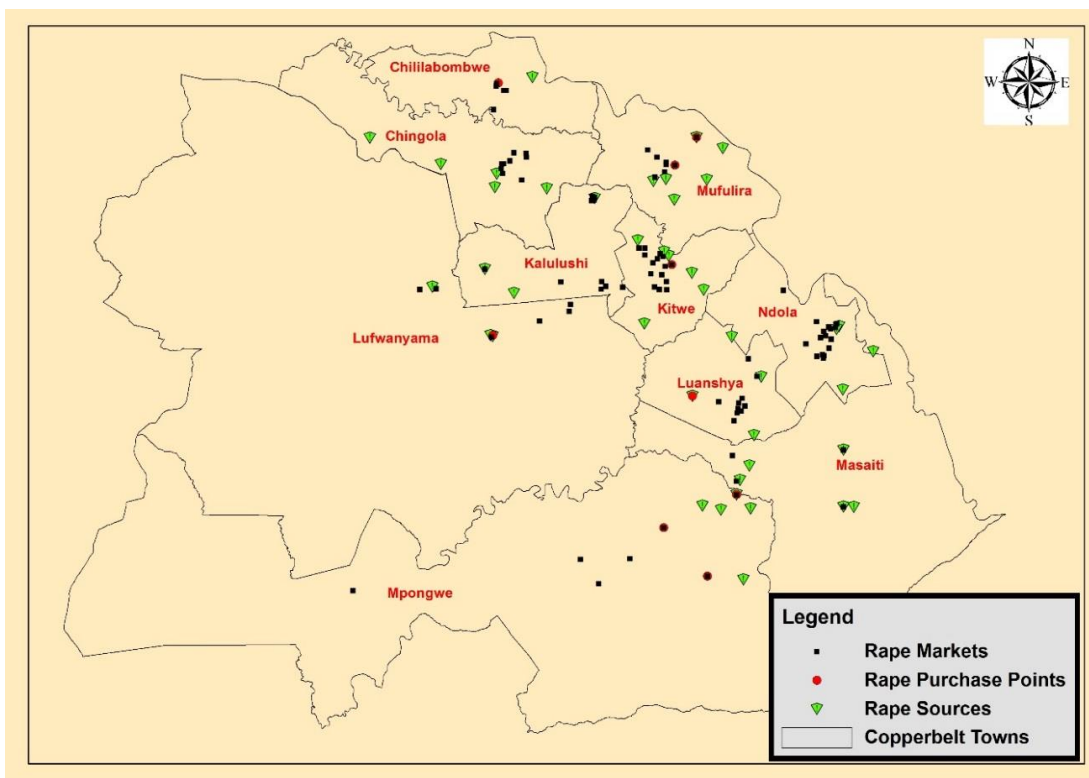


Rape (Source: Lusaka CRFS Workshop 2015)

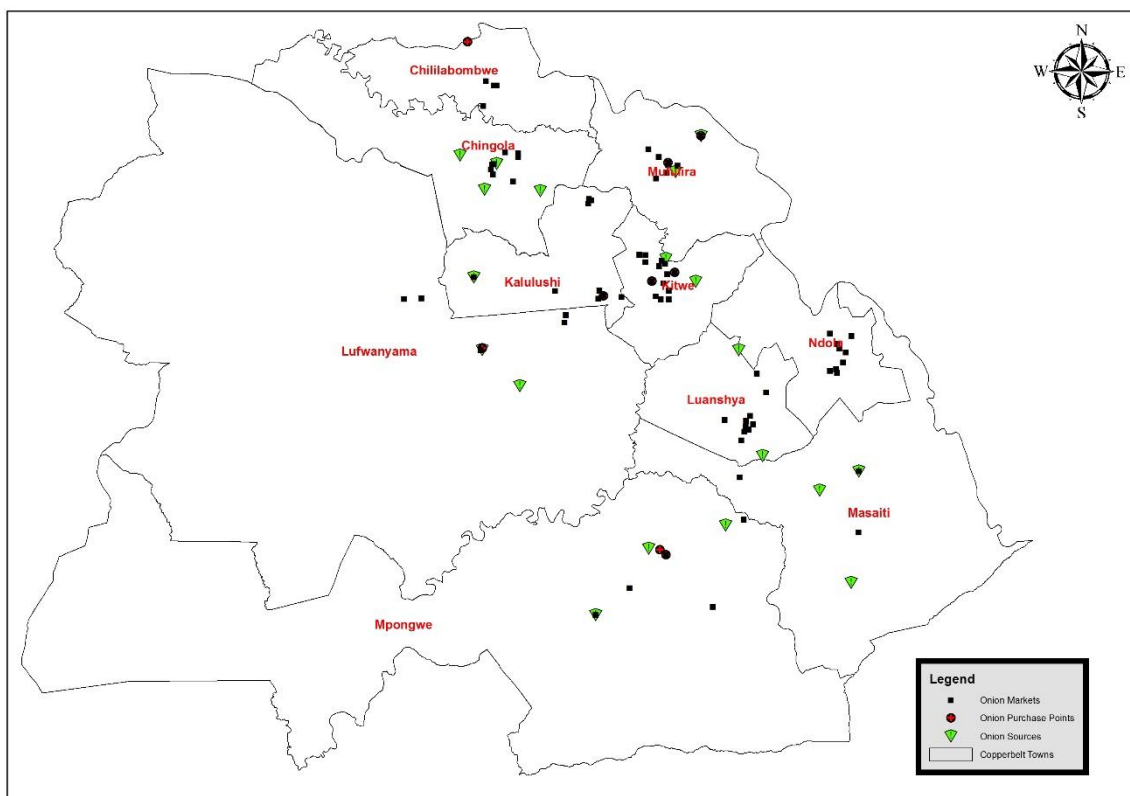


City Region Food System Toolkit

Assessing and planning sustainable city region food systems



Onion (Source: Lusaka CRFS Workshop 2015)



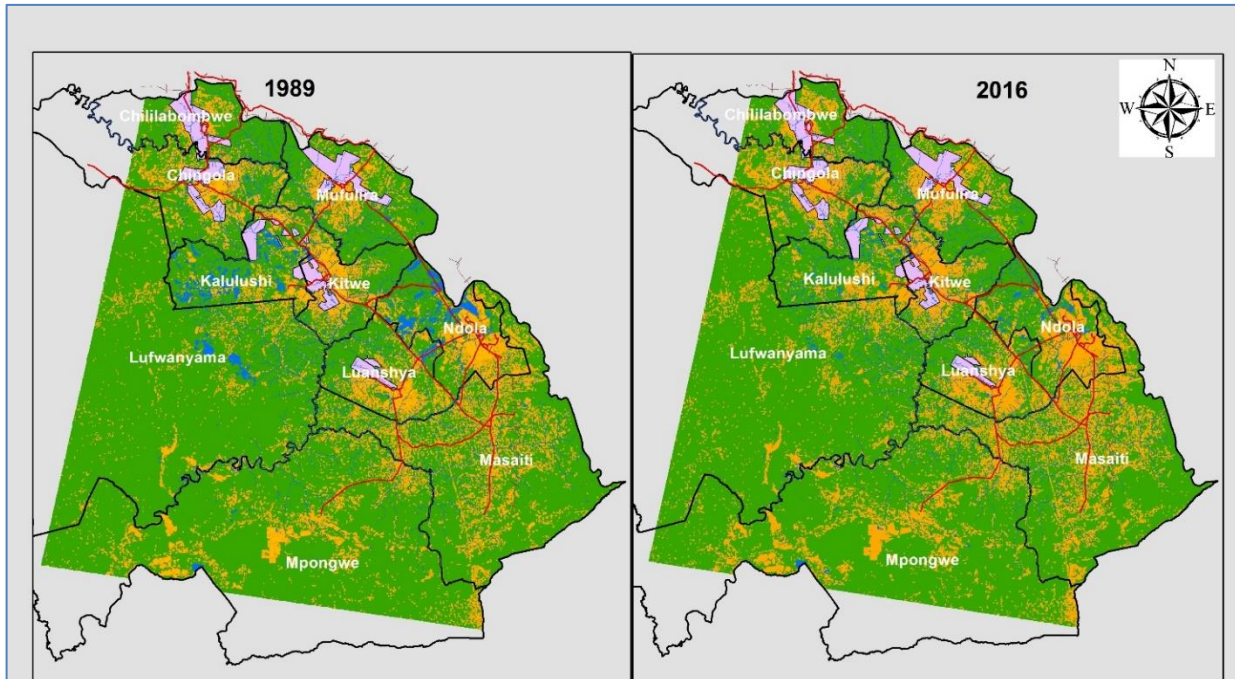
Change Detection /Impact of Urbanization on Agriculture Land (Source: Lusaka CRFS)



City Region Food System Toolkit

Assessing and planning sustainable city region food systems

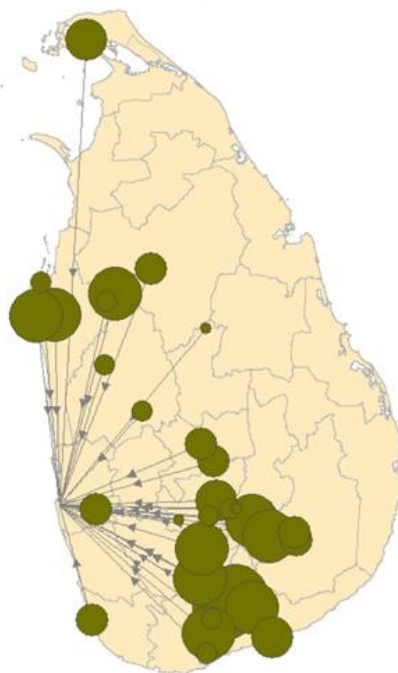
Workshop 2015)



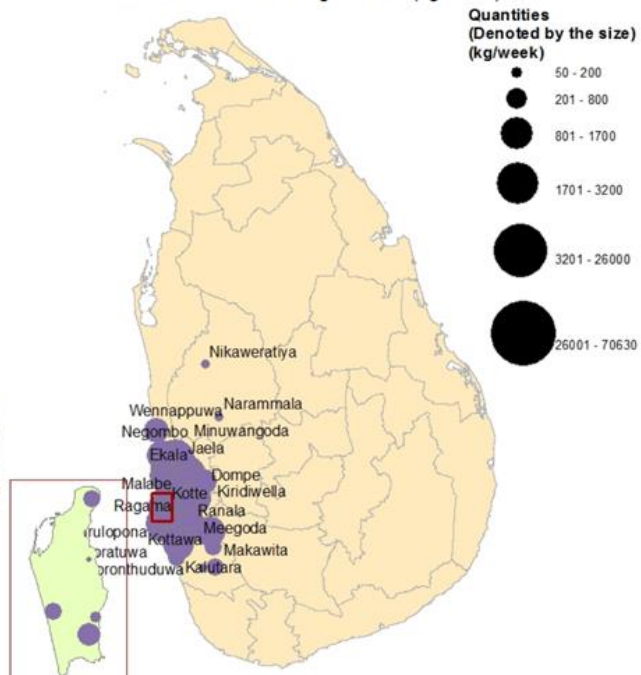
Colombo

Food flows mapping (Source: IWMI)

Average Quantity of Brinjals
Supplied to the Manning Markert (kg/week)



Average Quantity of Brinjals
Distributed from the Manning Markert (kg/week)



With support from



by decision of the
German Bundestag



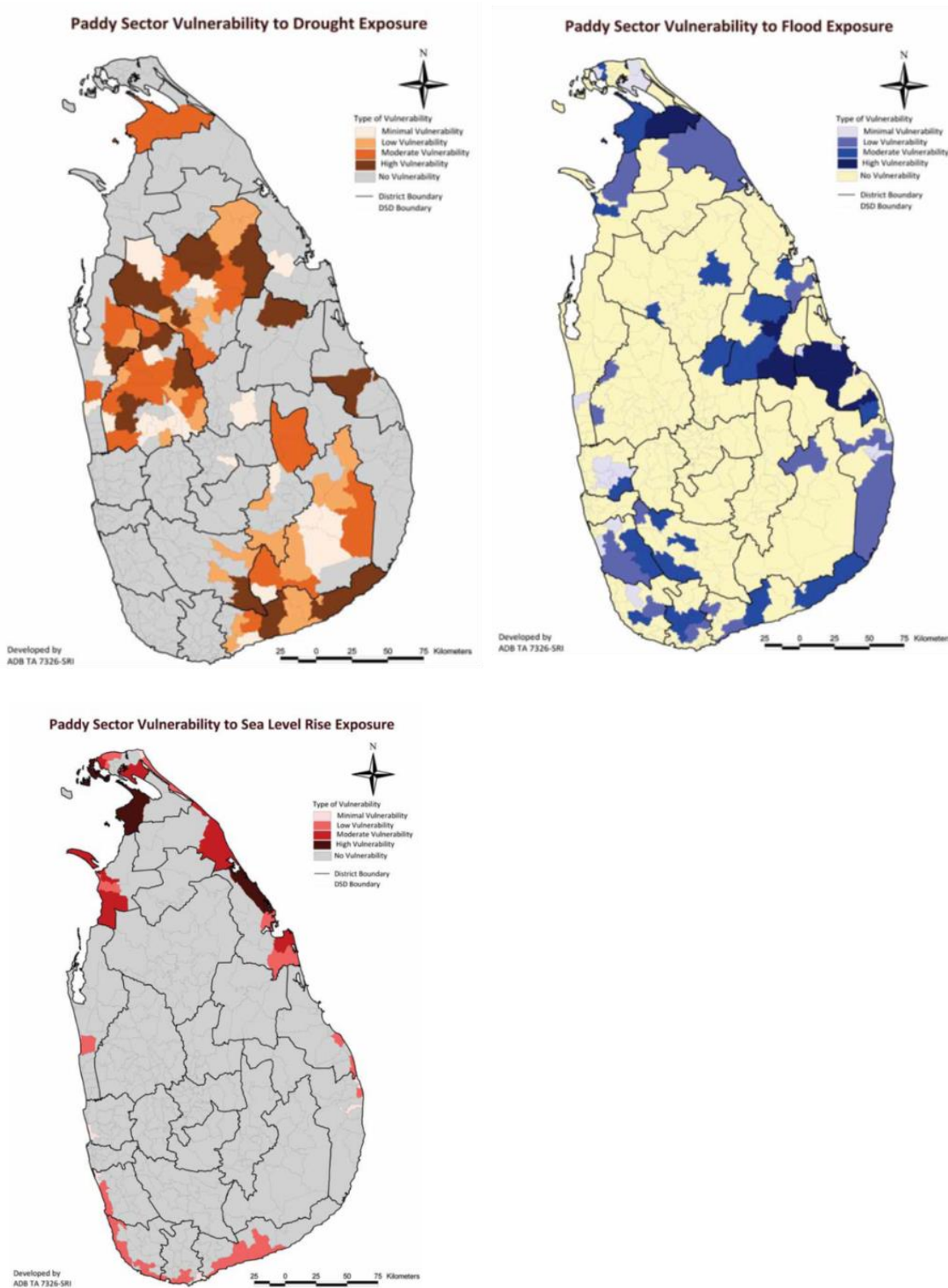
fondation
daniel & nina carasso
sous l'égide de la Fondation de France



City Region Food System Toolkit

Assessing and planning sustainable city region food systems

Vulnerability to climate related effects (Source: IWMI)



With support from



by decision of the
German Bundestag



fondation
daniel & nina carasso
sous l'égide de la Fondation de France

