

Information Notes for Participants

# The 37<sup>th</sup> Session of the Codex Committee on Nutrition and Foods for Special Dietary Uses



23-27 November 2015

Bad Soden, Germany

[www.ccnfsdu.de](http://www.ccnfsdu.de)



# MEETING VENUE

## RAMADA Hotel Bad Soden

Königsteiner Straße 88

65812 Bad Soden (a.T.), Germany

Tel. +49 (61) 962000

Fax. +49 (61) 96200153

Conference Room:

Mendelssohn Bartholdy-Tolstoi

## Welcome to Bad Soden

The German CCNFSDU Secretariat welcomes you to the 37<sup>th</sup> Session of the Codex Committee on Nutrition and Foods for Special Dietary Uses (CCNFSDU). This document provides information on the session, the venue and transportation from the airport. We wish you a pleasant visit as well as a productive session.

## Session Date

The 37<sup>th</sup> Session of the Codex Committee on Nutrition and Foods for Special Dietary Uses will be held at the Ramada Hotel from November 23<sup>rd</sup>-27<sup>th</sup>. The opening session will commence at 10:00 am on Monday, November 23, 2015. The Physical Working Group on the Revision of the Standard for Follow-up Formula will be held on Saturday, November 21, 2015 from 9:00 to 17:00.

# Registration

The participants of the meeting should provide the relevant information (names, official titles and addresses) through the online registration system by accessing the following link, at the latest by 23 October 2015:

<http://www.codexalimentarius.org/login>

The login and password for the online registration have been provided to all Codex Contact Points and Contact Point of Observers Organizations. If the login and password have not been received, please contact: [codex@fao.org](mailto:codex@fao.org)

Instructions for registration can be found at: [www.ccnfsdu.de](http://www.ccnfsdu.de)

At the meeting, participants will be able to complete the mandatory second part of the registration procedure. This will take place in the lobby of the Hotel on:

**Saturday 21 November 2015, starting at 8 am**

**Monday 23 November 2015, starting at 7.30 am**

The participants will receive identification badges and all necessary organisational information.

Identification badges must be visible and worn during the whole meeting.

## Documentation

Delegates are requested to bring their own documentation to the meeting. This documentation is available in English, French and Spanish on [www.codexalimentarius.org](http://www.codexalimentarius.org).

Conference Room Documents and any additional documents will be available in the Conference Room.

## Interpretation

Simultaneous interpretation will be provided in English, French, Spanish and German during the meeting.

## Wi-Fi

Wi-Fi will be available at the meeting venue so working documents and other information can also be downloaded during the meeting.

# Accommodation

## RAMADA Hotel Bad Soden

Located in Bad Soden am Taunus, a 25 min drive from Frankfurt International Airport and a 20 min drive from Frankfurt city. Address: Königsteiner Straße 88, 65812 Bad Soden a.T..



- A block of rooms has been reserved until 9 October 2015.
- The special rate at the RAMADA Hotel for participants is **89.00 €** per night for a single occupancy and **99.00 €** per night for double occupancy.
- All rates include **breakfast & complimentary Internet** in guest rooms.

Book early to reserve your room! The hotel reservation form can be found at [www.ccnfsdu.de](http://www.ccnfsdu.de).

Delegates are reminded that they are responsible for making their own hotel accommodation arrangements. It is highly recommended that you make a hotel reservation as soon as possible.

## Hotels nearby

Hotel name and address	Rate / night including breakfast and VAT if not stated otherwise*	Distance from hotel to venue
<b>Hotel Concorde</b> Am Bahnhof 1 <a href="#">Website Hotel</a>	Single room: € <b>106</b> Double room: € 147 Hotel reservation: <a href="mailto:info@hotel-concorde.de">info@hotel-concorde.de</a>	6 min on foot
<b>Hotel Rheinischer Hof</b> Am Bahnhof 3 <a href="#">Website Hotel</a>	Single room: € <b>77.50 €</b> ** Double room: € 97,50 € ** Hotel reservation: <a href="mailto:info@rheinischer-hof.com">info@rheinischer-hof.com</a>	6 min on foot
<b>Apart-Hotel Bad Soden</b> Parkstraße 3 <a href="#">Website Hotel</a>	Single room: € <b>82</b> Double room: € 92 Hotel reservation: <a href="mailto:info@aparthotel-badsoden.de">info@aparthotel-badsoden.de</a>	3 min on foot

\* Prices are subject to change. \*\* Special offer valid until 15 October 2015.

**More hotels in Bad Soden:** <http://www.bad-soden.de/de/gesundheit-und-tourismus/unterkuenfte/hotels.aspx>



# Arrival Information

The RAMADA Hotel is only a 4-min walk away from the train station 'Bad Soden a. T.'.

**Bad Soden a.T. is easy to reach by public transportation:**



© PIA Stadt Frankfurt am Main, Foto: Rainer Ruffer

A station for the regional train network is located in front of Frankfurt International Airport. The railway station is called "Regionalbahnhof". Regional trains (S, RE or RB trains) will take you from the "Regionalbahnhof" station to the main railway station (Hauptbahnhof) in Frankfurt city where you have to change trains. The journey to Bad Soden a. T. takes approximately 42-55 minutes.

You should buy a ticket ([www.rmv.de/en/](http://www.rmv.de/en/)) for price category 4 (4.55 € single).

**Another option for reaching the venue is to take a taxi:**

Bad Soden is located approximately 20 km from Frankfurt Airport (FRA). By taxi, the journey takes approximately 25 minutes and costs around 40 €. Taxis are always available in front of the main arrival points.

## Visa Information

Participants requiring a Schengen visa to enter Germany are advised to contact the **competent embassies and consulates-general** of the Federal Republic of Germany as soon as possible to apply for their visa.

Here you can find out whether you need a Schengen visa for your visit; a Schengen visa is valid for 90 days: [http://www.auswaertiges-amt.de/EN/EinreiseUndAufenthalt/StaatenlisteVisumpflicht\\_node.html](http://www.auswaertiges-amt.de/EN/EinreiseUndAufenthalt/StaatenlisteVisumpflicht_node.html).

The chairperson of the CCNFSDU and the German CCNFSDU Secretariat do not issue personalized invitations to the meetings of the CCNFSDU. Furthermore, the chairperson and the CCNFSDU Secretariat cannot expedite visa applications.

Please visit the website of the Federal Foreign Office for further information: [http://www.auswaertiges-amt.de/EN/Startseite\\_node.html](http://www.auswaertiges-amt.de/EN/Startseite_node.html).

# Distance Information

Place	Distance from Venue	Transport
Frankfurt City	20 km	Public transportation <b>S3</b> ~ 25 min Rental Car/ Taxi ~ 20 min
Frankfurt Airport	20 km	Public transportation ~ 55 min Rental Car/Taxi ~ 20 min
Wiesbaden	30 km	Train ~ 1.30 hrs Rental Car ~ 30 min
Mainz	40 km	Train ~ 1.30 hrs. Rental Car ~ 40 min
Heidelberg	100 km	Train ~ 2 hrs Rental Car ~ 1.10 hrs
Cologne	180 km	Train ~ 2 hrs Rental Car ~ 2 hrs.

## Other Information

### Climate

Temperatures tend to fall in November, with daily highs decreasing from 11°C to 6°C over the course of the month, exceeding 15°C or dropping below 2°C only one day in ten. Daily low temperatures range from 1°C to 4°C, falling below -3°C or exceeding 7°C only one day in ten. Rain and snow are not uncommon at this time of the year, so we advise participants to bring warm coats and umbrellas.

### Currency

The Euro is the only currency accepted in Germany. Major credit cards are accepted in most hotels and stores. ATM machines are available at the airport as well as near the venue hotel. Currency exchange is available at the airport and in Frankfurt City.

### Electrical Current

Electricity in Germany is 230 Volts and 50 Hertz.  
Plugs of type C/F are required.



### Language

The official language in Germany is German. English is widely spoken.

### Time zone

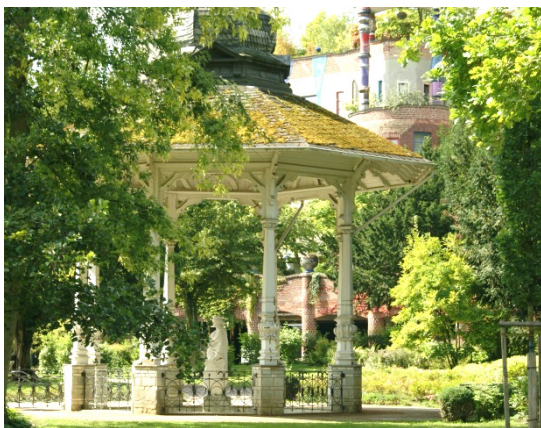
Bad Soden is in the Central European Time zone (CET), which is GMT/UTC +01:00 hour.

# Bad Soden

Bad Soden am Taunus can be found in a charming setting situated in the scenic, south-eastern foothills of the Taunus Mountains. This area is sometimes also known as the Switzerland of Nassau.

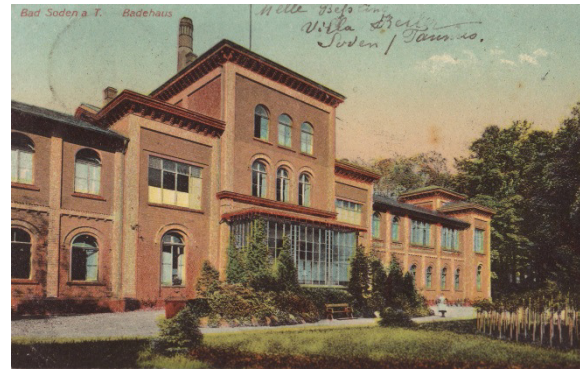
Bad Soden was first mentioned in written documents over 800 years ago. However, we know that settlements were in existence here long before that era, a fact which is proved by archaeological finds dating from approximately 600BC. It also comes as no surprise to discover that the Romans were well acquainted with the area.

An integral chapter of the town's history is its emergence as a spa resort, and today, Bad Soden can still attribute its reputation as a health and spa resort to over 30 thermal and mineral springs located in its vicinity.



The first spa visitors arrived in Bad Soden in 1702. Slowly but surely Bad Soden began to be recognized as a spa resort and reached its zenith in the 19<sup>th</sup>

century. Leo Tolstoy, Felix Mendelsohn Bartholdy and Tschaikowsky were just a few of the famous personalities who sought out the health-giving waters.



The former bath-house can be found in the Old Spa Park. This park has also played its part in turning Bad Soden into a green oasis, just like the Neue Kurpark, the Quellenpark and the Wilhelmspark on the periphery of the wonderful and beautifully restored Old Town Quarter (Altstadt). This is where one can see the famous Hundertwasserhaus, constructed by the Austrian artist Friedensreich Hundertwasser.

But it is not only these wonderful parks which offer lovely walks. The countryside immediately surrounding Bad Soden, e.g. the Eichwald forest or the valley known as Altenhainer Tal, are the perfect settings for peaceful and relaxing trips. And the city of Frankfurt/Main, which is only 20 km away, is an ideal destination for an exciting shopping and sightseeing trip with international flair.



# Places of Interest

## Bad Soden

### “Badehaus” – former bath house

The “Badehaus” can be found in the old Spa Park and today accommodates the Museum of Culture, the municipal archive and the city library.



### “Hundertwasserhaus”

The “Hundertwasserhaus”, constructed by the famous Austrian artist Friedensreich Hundertwasser (died February 2000), can be found in the Old Town Quarter.

### “Alter Wasserturm” - Old Water Tower

The Old Water Tower was constructed in 1911 to supply a private plant nursery with water. Today it is a protected building and is home to hawks, owls and bats. From the top of the Water Tower you have a great view to Frankfurt.



## Frankfurt City



### “Römer”

The “Römer” is the one of the most famous landmarks in Frankfurt. The medieval building in the Old Town has been Frankfurt’s city hall for more than 6 centuries. It suffered serious damage in the Second World War and was reopened by Theodor Heuss in 1955.

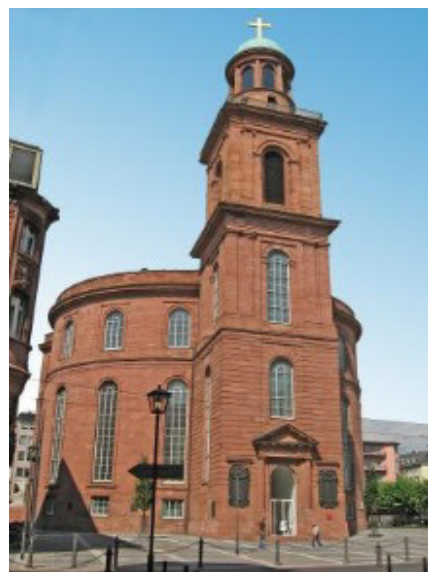
© PIA Stadt Frankfurt am Main, Foto: Bernd Wittelsbach /Kontrast Fotodesign Gbr.



## St. Paul's Church

St. Paul's Church is one of the most important political symbols of democracy in Germany. In the year 1849, it became the seat of the Frankfurt Parliament, the first publicly and freely-elected German legislative body. Here the National Assembly drew up Germany's first democratic constitution. It was completely destroyed in 1944 and reconstructed in 1948.

© PIA Stadt Frankfurt am Main, Foto: Karola Neder



## Frankfurt Skyline

The Main Tower (in the middle) was built in 1999 and is the only one in the city that has a publicly accessible viewing platform with a restaurant. In 1999 it was the first high-rise building in Europe with a façade made entirely of glass.

The Commerzbank Tower (on the right) is Germany's highest skyscraper (about 300m in height).

© PIA Stadt Frankfurt am Main, Foto: Tanja Schäfer

## “Weihnachtsmarkt” – Christmas Market

Frankfurt Christmas Market will take place from 25 November until 22 December 2015.

© Stadt Frankfurt, Stefan Maurer



To find out more about Bad Soden, Frankfurt and their famous landmarks, please visit the following websites: [www.bad-soden.de](http://www.bad-soden.de) & [www.frankfurt.de](http://www.frankfurt.de).

For any additional question on  
the 37<sup>th</sup> CCNFSDU session, please  
contact the CCNFSDU Secretariat  
at the main email box:

[ccnfsdu@bmel.bund.de](mailto:ccnfsdu@bmel.bund.de)

**We look forward to seeing you in  
Bad Soden a.T., Germany!**