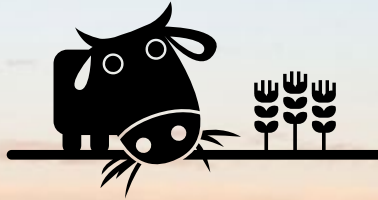


26<sup>th</sup>

Session of the Codex Committee on  
**RESIDUES OF VETERINARY**  
DRUGS IN FOODS





# THE 26th SESSION OVERVIEW

The 26th Session of the Codex Committee on Residues of Veterinary Drugs in Foods (CCRVDF26) will take place from February 12th-February 17th, in Portland, Oregon, at the Hilton Portland Downtown.

Details regarding on-site registration and the agenda will be posted at a time closer to the event.





# CCRVDF REGISTRATION

The Codex Secretariat uses the Codex Online Registration System (ORS) to track delegate registrations for CCRVDF26. Please ensure that your Codex Contact Point (for member countries and observer organizations) registers all members of your delegation for the upcoming session, via the following link: <http://www.fao.org/fao-who-codexalimentarius/registration/en/>

Please note that the invitation to CCRVDF26 issued by FAO and WHO requests that delegates register by January 13, 2023.

We encourage all delegates who expect to attend CCRVDF26 to register well in advance to ensure that appropriate seating arrangements will be available at the meeting.

*\*\*Please note that the CCRVDF26 meeting registration is a separate process from the hotel reservations for sleeping accommodations at the Hilton Portland Downtown Hotel (please see section below "CCRVDF26 Venue Hotel").*

# VISA REQUIREMENTS

If you require a visa to enter the United States, we strongly encourage you to begin the visa application process as soon as possible. Most delegates will be considered “independent travelers” and will need to apply for a B1/B2 visa. Diplomats and other foreign government officials traveling to the United States to engage solely in official duties or activities on behalf of their national government must obtain A-1 or A-2 visas prior to entering the United States. They cannot travel using visitor visas or under the Visa Waiver Program.

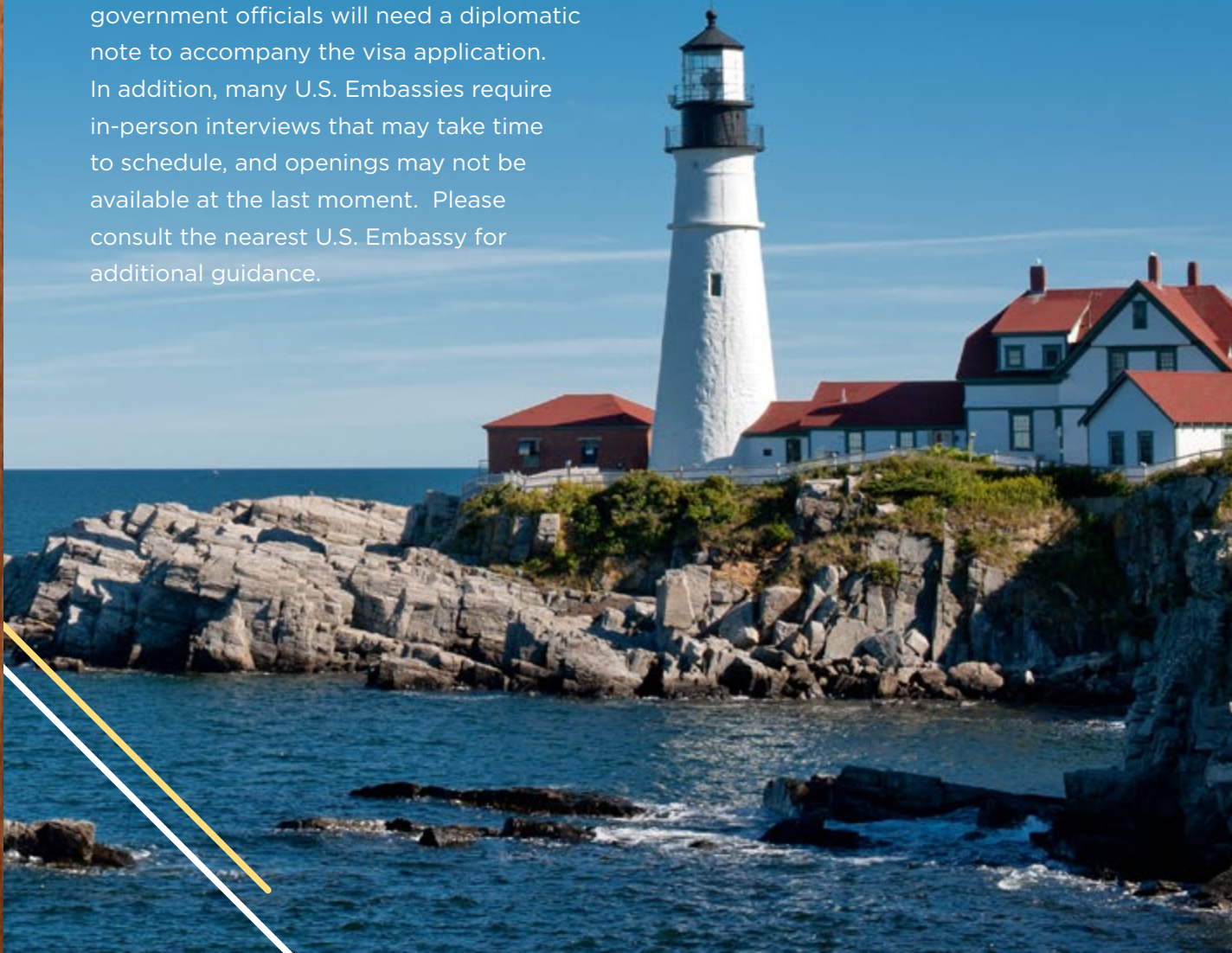
Additional information may be found at the following site:

<https://travel.state.gov/content/visas/en/visit/visitor.html>

According to the U.S. State Department, all government officials will need a diplomatic note to accompany the visa application. In addition, many U.S. Embassies require in-person interviews that may take time to schedule, and openings may not be available at the last moment. Please consult the nearest U.S. Embassy for additional guidance.

Although the U.S. Codex Office cannot influence the visa process, we will assist in any way we can, including providing registration confirmation letters to each registered delegate. It is the responsibility of delegates to begin the visa application process in a timely manner, and if this is not done well in advance, it may not be possible to obtain a visa in time to attend the meeting.

We believe it is important that delegates from all Member Countries and Organizations have the opportunity to participate in Codex meetings. Completing and submitting the visa application promptly will ensure that the work of Codex accurately reflects the views and contributions of all its members.





# ABOUT PORTLAND, OREGON

Portland, Oregon is a port city in the Pacific Northwest and the largest city in the state of Oregon. It is situated at the confluence of the Willamette and Columbia rivers. Portland has a population of 652,503 making it the 26th most populous city in the United States.

Named after Portland, Maine, the Oregon settlement began to be populated in the 1840s, near the end of the Oregon Trail. Its water access provided convenient transportation of goods, and the timber industry was a major force in the city's early economy. The city's economy experienced an industrial boom during World War 2.

Portland's climate is marked by warm, dry summers and cool, rainy winters. This climate is ideal for growing roses, and Portland has been called the "City of Roses" for over a century.







## FLYING TO PORTLAND

Portland's primary airport is Portland International Airport (PDX). It is conveniently located twelve miles (19km) from the downtown area and the Hilton Portland Downtown Hotel.

## TRANSPORTATION TO THE PORTLAND HILTON DOWNTOWN HOTEL

### MAX LIGHT RAIL

(Portland's most efficient light rail system that connects the metro area and the downtown)

At the heart of Portland's world-class public transportation system is the Metropolitan Area Express (MAX) light rail, with more than 90 stations and 60 miles of track connecting the city, airport and region.

### TRIMET FARES:

Adult (ages 18-64): \$2.50 to ride for 2.5 hours;  
\$5 for a day pass

Honored Citizen (ages 65 and older):  
\$1.25 to ride for 2.5 hours; \$2.50 for a day pass

From Portland International Airport (PDX) board the RED line to City Center and Beaverton. After a quick 40-minute ride, get off at Pioneer Square North MAX Station and walk a quick 0.2 miles to Hilton Portland Downtown.

<https://trimet.org/max/index.htm>





# GETTING TO/AROUND PORTLAND



## **TAXIS AND RIDE SHARES (UBER/LYFT)**

Taxis and Ride Share Services (Uber/Lyft) are the most convenient mode of transportation to and from the airport. Typically, ride share services are less expensive than taxis. Uber and Lyft riders may request a private car or a shared car, which will pick other passengers up along the way and discount your ride cost. To use Uber or Lyft, you must download the respective mobile app.

The trip from Portland International Airport (PDX), the Hilton Portland Downtown Hotel takes approximately 17-20 minutes depending on traffic.

### **TAXIS**

- Costs are approximately \$37
- To pick up a taxi at the airport, simply follow the signs leading to the “Taxi and Transportation” sign. A customer service representative will place you with the first available taxi.

### **RIDE SHARE (UBER/LYFT)**

- Costs are approximately \$28-\$32 (for a private car)
- Pick-up can be coordinated at the designated “Ride Share” passenger pickup locations below:

#### **Terminal 1:**

Exit baggage claim via the escalators (making sure you are on the lower level)

Once you have your luggage, head to Island 2 directly outside of Baggage Claim.

*\*\*\*For more information on how to download the apps, additional fares, and first-time user promo codes go to:*

<https://www.flypdx.com/GroundTransportation/Rideshare>



# CCRVD-26 VENUE HOTEL

The Hilton Portland Downtown Hotel is within a half mile from Arlene Schnitzer Concert Hall, Pioneer Courthouse Square and Mall, Portland Art Museum, and Portland State University. Pioneer Place MAX Station is two blocks away for connections to the Moda Center, Convention Center, and OMSI. Enjoy our restaurant, lobby bar, grab-and-go market, and fitness center.

## HILTON PORTLAND DOWNTOWN

921 SW 6th Ave

Portland, OR 97204

Phone: +1- 503-226-1611

[https://www.hilton.com/  
en/hotels/pdxphhh-hilton-  
portland-downtown/](https://www.hilton.com/en/hotels/pdxphhh-hilton-portland-downtown/)

Hotel check-in: 16:00

Hotel check-out: 12:00



## HOTEL RESERVATIONS AT THE HILTON PORTLAND DOWNTOWN

Please [CLICK HERE](#) to book, modify and cancel your hotel reservations online.

*\*\*Please note that this link only works on computers and is not tablet or mobile friendly.*

The reservation link automatically populates availability for the following dates:

February 10-18, 2023. Guest should click on “change search” to personalize their dates of stay.

The CCRVDF26 special rate of \$176.32 USD per night (single or double occupancy) is inclusive of the sales and tourism tax.

We encourage all delegates to secure a hotel reservation as early as possible. If your plans change and you can no longer attend CCRVDF26, you may cancel your hotel reservation, without penalty, up to 72 hours prior to your scheduled arrival.

Please note the special rate is available only until January 20, 2023. Any hotel reservations requested after this date will be based on availability. Please make your hotel reservations early!

### HOTEL SERVICES

- 2 restaurants, 1 grab and go, 1 sit down
- 24-hour room service
- Concierge
- Business center
- Relaxation pool
- Fitness Center
- Pet-friendly accommodations
- Valet parking (\$55.00)

### HOTEL GUEST ROOMS

Standard in-room features include:

- Built-in USB outlets
- 65 inch flat-screen TVs
- On-demand movies
- Cuisinart coffeemaker (with complimentary coffee and tea)
- Luxurious bath amenities
- Hairdryer
- Ironing Board
- Clock/radio
- Chaise lounge
- Writing desks and chairs
- In-room safe
- 24-hour housekeeping
- Room Service
- Scald proof shower/tub



## WEATHER

- Portland weather is known to be very cold and rainy in the winter months.
- Average temperatures for mid-February in Portland is approximately 10°C (50°F) during the day and 3°C (38°F) at night.
- It is a good idea to layer your clothing, so that you can remove or add garments as needed for comfort.

## ELECTRICAL CURRENT

- Electrical appliances operate on 140 volts (50Hz).
- Power outlets accommodate two prong or three prong plugs.

## CURRENCY

- United States Dollar (\$) or USD)
- ATM Machines and Currency Exchange are available at the airport upon arrival and in the area surrounding the Portland Hilton Downtown Hotel.
- Visa, MasterCard, American Express, and Discover are the most widely accepted credit cards.
- You may use your bank card or credit card as long as you have a 4 digit pin and/or a chip.

## TIPS AND TAXES

- All prices are subject to 6.35% sales tax in the city of Portland which is typically not included in the price.
- Please note that taxi/rideshare fares and restaurant bills do not include gratuities. It is therefore customary in the United States to add a 15-20% tip when paying a bill.





# HELPFUL INFORMATION



Portland, Oregon, is a vibrant and scenic city in the USA's Pacific Northwest. The largest city in the state, it's famed for its huge expanses of green space, from parks and forests to breathtaking mountaintops.

You'll be drawn to Portland if you love the great outdoors, but that's not all there is to love about this place. It's cool and quirky, with great places to shop and even better places to eat and drink. There's fine dining and street food aplenty, as well as countless breweries, distilleries and coffee shops to experience, too.

Explore some of Portland's surrounding neighborhoods that all have something unique to offer (i.e., Old China Town, The Pearl District, St. Johns, Belmont, Hawthorne.)

CCRVDF26 will feature a Tour Desk where you may learn about all that the Portland area has to offer as well as book a variety of sightseeing options, excursions, and activities during your free time.

For more information on major attractions, tours, sporting events, and more, explore these websites:

<https://www.travelportland.com/neighborhoods/>

<https://www.hotels.com/go/usa/things-to-do-portland>





# LOCAL ATTRACTIONS

Approximate distance from the Hilton Portland  
Downtown Hotel

1. Oregon Historical Society, 0.2mi (322m)  
<https://www.ohs.org>
2. Eat Adventures Food Tour, 0.3mi (483m)  
<https://www.eatadventures.com>
3. Portland Art Museum, 0.3mi (483m)  
<https://portlandartmuseum.org>
4. Spa Sasse, 0.4mi (644m)  
<https://www.spasasse.com>
5. Portland Wine Bar and Winery Tasting,  
0.5mi (805m)  
<https://portlandwinebar.com>
6. Tom McCall Waterfront Park 0.6mi (966m)  
<https://www.portland.gov/parks/search>
7. Powell's City of Books, 0.7mi (1.13km)  
<https://www.travelportland.com/attractions/powells/>
8. Voodoo Doughnuts, 0.8mi (1.29km)  
<https://www.travelportland.com/attractions/voodoo-doughnut/>
9. Lan Su Garden 1.0mi (1.61km)  
<https://lansugarden.org/>
10. 6. Oregon Zoo, 2.6mi (4.18km)  
<https://www.oregonzoo.org>





