

CODEx ALIMENTARIUS COMMISSION



**Food and Agriculture
Organization of the
United Nations**



**World Health
Organization**

Viale delle Terme di Caracalla, 00153 Rome, Italy - Tel: (+39) 06 57051 - E-mail: codex@fao.org - www.codexalimentarius.org

Agenda Item 8

CRD 27

Original language only

JOINT FAO/WHO FOOD STANDARDS PROGRAMME

CODEx COMMITTEE ON FOOD IMPORT AND EXPORT INSPECTION AND CERTIFICATION SYSTEMS

Twenty-Sixth Session

Presentations from Traceability Side Event



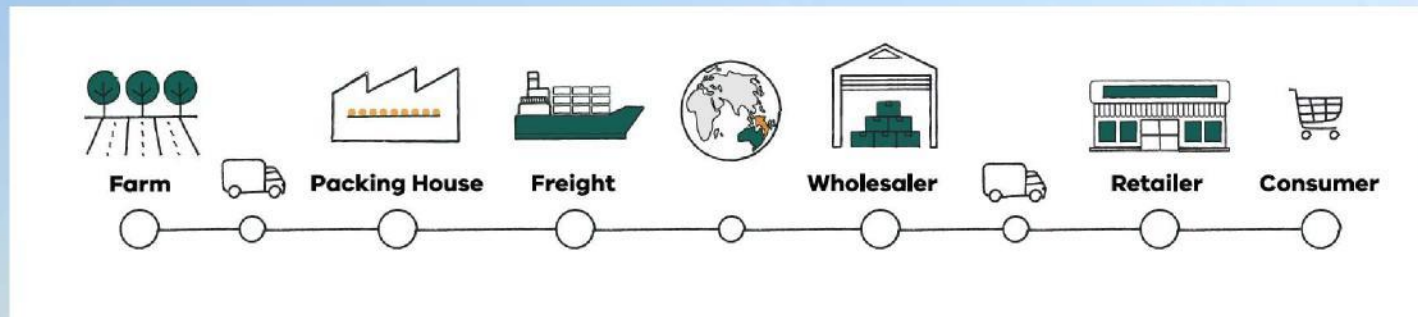
Traceability

Caroline Barrett

Program Manager - Traceability

Traceability

Traceability systems track the journey of food from 'farm to fork'



Our Drivers: Emergency responses, biosecurity, food safety, market access, provenance, product quality, supply chain efficiency, integrity assurances

Traceability Challenges: Victoria, Australia



- Victoria's current traceability systems are meeting global baseline requirements but trail market leaders
- We are leading competitors in livestock traceability but not for the full supply chain into international markets
- Other countries are investing in traceability, and digitising quicker than our sectors
- Our horticulture, grain and wool sectors need the most support to build traceability
- Horticulture traceability systems in Australia are currently unharmonized across industries and supply chains, fragmented and not fully digitised
- Grant Thornton Report: Traceability Supply Chain Technology Analysis 2020



Victoria, Australia: Government & Industry Traceability Programs Τραχεαβιλιτιψ Φυνδσ ανδ Προγραμσ ι

Traceability Fund
\$11.7 million 2021-24

- 1. Traceability Information Hub
- 2. Smart Traceability Design and Innovation
- 3. Building Victorian Traceability Systems
- 4. Marketing "Paddock to Plate" Traceability of Victorian Produce to Overseas Consumers
- 5. Developing Australian & Victorian Traceability Standards



Traceability Hub



Summerfruit



Bees



Apples & Pears



Cherries



Livestock



Biosecurity Portal



Quickstart Guide



Horses



Plant Property Identification

Food to Market Grant Fund
\$3.1 million allocated to traceability (of \$15 million fund) 2021-23

Traceability Projects



Citrus



Table Grapes



Cost Benefit Analysis Calculator

Citrus Traceability Project

- Future-proofing Australian industries for international traceability regulations is key.
- The new [US FDA Food Traceability Rule](#) is likely the most comprehensive set of traceability regulations internationally at present.
- Used as the basis for data compilation and functionality within our citrus, table grapes, cherries projects.
- Requires recording of “Key Data Elements” KDEs at “Critical Tracking Events” CTEs.
- NB: Businesses need to provide traceability back to the farm within 24 hours in an electronic format.
- GS1 consultation informed the US FDA Food Traceability Rule design, and GS1 standards are nominated by the [World Trade Organisation](#).
- Therefore, in this project, GS1 standards were implemented alongside the Mildura Fruit Company’s current data to produce a comprehensive set of “Key Data Elements” KDEs in electronic format.

Key Data Element	GS1 Standard
Where	GLN Global Location Number – Packing House
What	GTIN Global Trade Item Number – Product Unit
	SSCC Serial Shipping Container Code – Logistic Unit
Data Storing and Sharing	EPCIS 2.0 Electronic Product Code Information Services
Data Access	GS1 Digital Link: B2B and B2C connections through scanning QR codes





Traceability Key Data Elements KDEs

Location	Key Data Elements (KDEs)	Mildura Fruit Company	GS1 Standards Data Format		
		Usual Data Format	GS1 Standards	Receival	Dispatch
Farm* Packhouse	Location Identifier		GLN	9377778092553	9377778092553
	Location Description		GLN	9377778092553	9377778092553
	Location coordinates		GLN	9377778092553	9377778092553
Item	Commodity	Mandarin	GTIN	9313336000318	9313336000318
	Variety	Afourer	GTIN	(Afourer Mandarin)	(Afourer Mandarin)
	Logistic Unit identification	MF22012838	SSCC	093133360220230267	093133360220230267
	Trade Item Description	Navel Class 1 - China Orchard Breeze Black	GTIN	9313336000356	9313336000356
	Trade Item Quantity	Fixed weight, not variable	GTIN	9313336000318	9313336000318
	Trade Item Unit of Measure	Wood bin 450kg - FW 1kg		Loose	Pallet
	Batch	22221	Batch provided by MFIS	22221	22221
	Serial Number	(21)	Trust Codes Token	gHKYhn9Z	gHKYhn9Z
	Pallet Number	MF22012838	SSCC	093133360220230267	093133360220230267
	Transit	Transit date	11/07/2022	Date/time in UTC	
Transit time		N/A	Date/time in UTC		2022-07-11T00:00:00Z
Logistics*					



*Farms and logistics present future development opportunities

Data Revealed versus Data On Record

Data Revealed	Data On Record
	
<p>Unique serialised GSI Digital Link QR codes on product enable scanning and access to a B2B microsite (wholesale product) or B2C microsite (retail product).</p>	<p>A product cloud captures all product traceability data and this is available to view through a dashboard at the packhouse.</p>
<p>Everyone in the supply chain from farm to consumer can authenticate product origin and engage with the brand via phone scan.</p>	<p>GSI standards are used for traceability data.</p>
<p>Privacy is ensured through controlled data reveal.</p>	<p>Unit and pallet codes support inventory management.</p>
<p>B2B microsite data may include information such as storage needs, certification, food journey, expiry dates and marketing.</p>	<p>Scan data supports anti food fraud brand protection.</p>
<p>B2C microsite data may include information such as marketing, promotions and feedback surveys. There is two-way flow of information, with surveys and scan data providing information back to the producer.</p>	<p>Survey data from consumers can be used for marketing and product development.</p>
<p>Product alerts including food fraud notifications or recalls may be activated through the microsite. (No food fraud notifications or recalls were activated within this project.)</p>	<p>Electronic traceability data can be used for instantaneous regulatory compliance in times of crisis e.g. recalls.</p>



Discover more about the project here including Videos and the Final report [here](#)



US FDA Food Traceability Final Rule: Requirements for Additional Traceability Records for Certain Foods

April 2023
CCFICS

Jennifer Thomas
Senior Advisor
US Food and Drug Administration
Center for Food Safety and Applied Nutrition



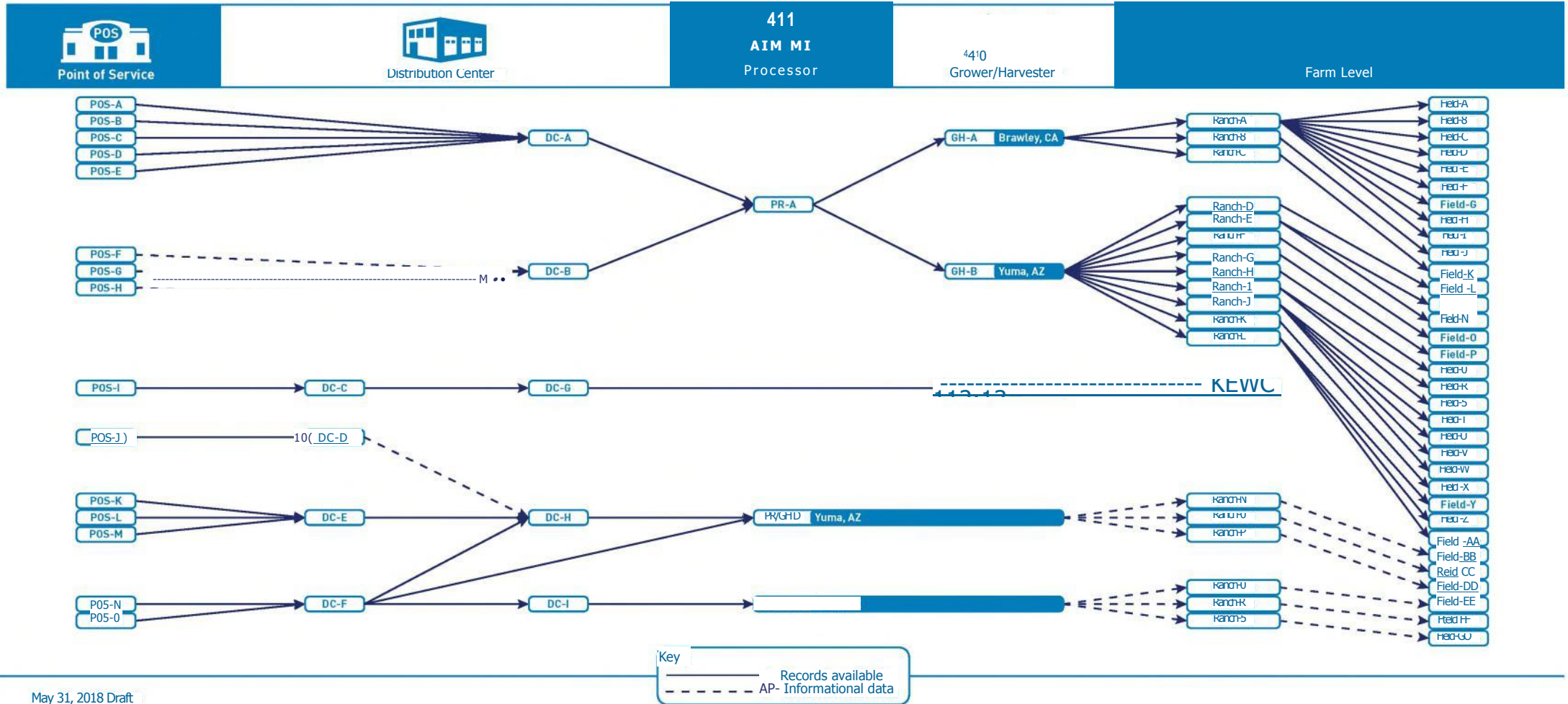
Why is traceability important?

- When a foodborne illness outbreak occurs, need to quickly identify and remove contaminated food from market to avoid additional illnesses/deaths
- Need accurate information on the food to trace it back through the supply chain to identify the source and also forward to determine how the food was distributed

Traceback Diagram



E. coli 0157:H7 - Romaine - Multi-state Outbreak Master Traceback Diagram



May 31, 2018 Draft

The Case for Better Traceability

Goals:

- Rapid identification of sources of contamination
- To limit the scope of recalls
- Reduce food waste

How we get there:

- Data standards
- Linking – connecting the dots on how food moves through the marketplace
- Interoperability and interconnectivity
- Improved communications



FDA FOOD SAFETY
MODERNIZATION ACT

FSMA 204(d) – Additional Recordkeeping Requirements for High Risk Foods

Requirements shall... *(this list is not an exhaustive list)*

- Apply only to designated foods;
- Not require a full pedigree;
- Not require records of recipients of a food beyond the immediate subsequent recipient of a food (can only go one up);
- Not prescribe specific technologies for maintaining records
- Allow maintenance of records at an accessible location;
- Include a process by which a food may be removed from the designated list
- Be science-based



Food Traceability List

Cheese (made from pasteurized milk), fresh soft or soft unripened

Cheese (made from pasteurized milk), soft ripened or semi-soft

Cheese (made from unpasteurized milk), other than hard cheese

Shell eggs

Nut butters

Cucumbers (fresh)

Herbs (fresh)

Leafy greens (fresh)

Leafy greens (fresh-cut)

Melons (fresh)

Peppers (fresh)

Sprouts (fresh)

Tomatoes (fresh)

Tropical tree fruits (fresh)

Fruits (fresh-cut)

Vegetables (fresh-cut)

Finfish (histamine-producing species) (fresh and frozen)

Finfish (species potentially contaminated with ciguatoxin) (fresh and frozen)

Finfish, species not associated with histamine or ciguatoxin (fresh and frozen)

Smoked finfish (refrigerated and frozen)

Crustaceans (fresh and frozen)

Molluscan shellfish, bivalves (fresh and frozen)

Ready-to-eat deli salads (refrigerated)



- Persons who manufacture, process, pack, or hold foods on the Food Traceability List
- Covers the entire food supply chain
- Includes both foreign and domestic entities
- Full and partial exemptions may apply

What will the Food Traceability Rule require?

Key Concepts of the Final Rule

- (C)
- Start
- Linking
- Electron
- Records p
- Faster produ

CTE and KDE Framework

The role of the entity in the supply chain defines the data it must keep and share

Critical Tracking Events

Harvesting, Cooling, Initial Packing, First Land-based Receiving, Shipping, Receiving, and Transforming are Critical Tracking Events (CTEs) for which records would be required.

Key Data Elements

Required records would need to contain specific Key Data Elements (KDEs). The KDEs required would depend on the CTE being performed.

The records required at each CTE would need to contain and link the KDEs to the traceability lot.

Emphasis on...



Keeping and sharing KDEs



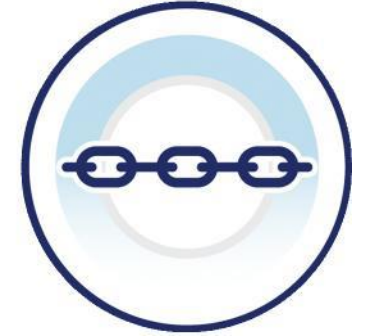
Traceability Lot Code (TLC)



Traceability Lot Code Source (TLC Source)

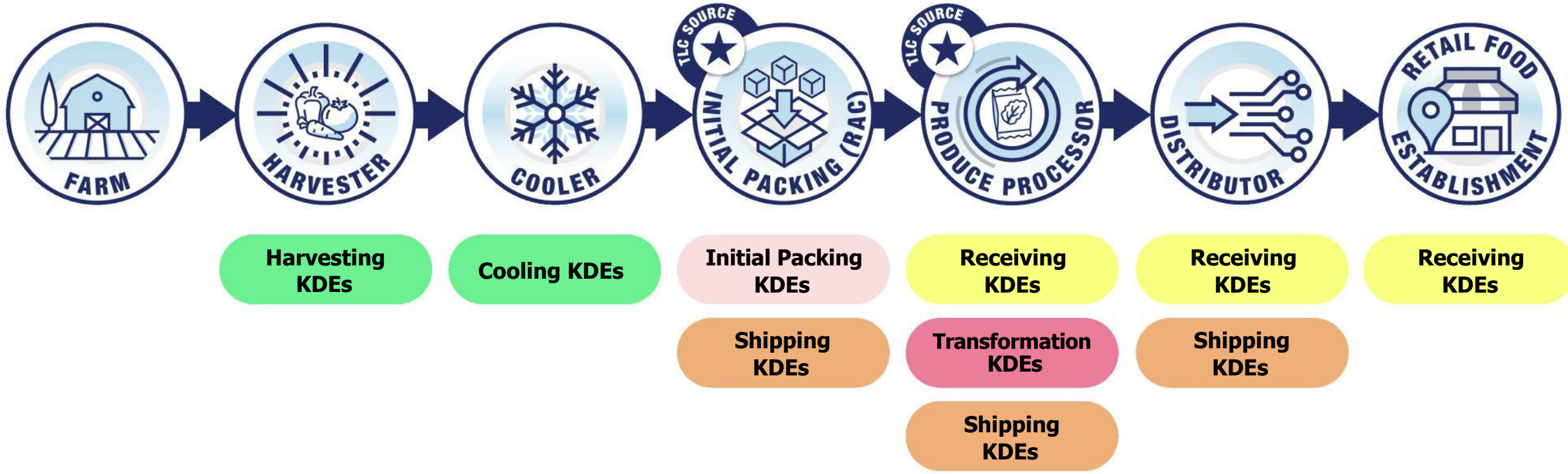


Traceability Plan



Working with your supply chain partners

Supply Chain Example: Fresh Produce



Records Maintenance and Availability



Legible **original paper, electronic**, or true copies. Stored to prevent deterioration or loss. May **include electronic links**.

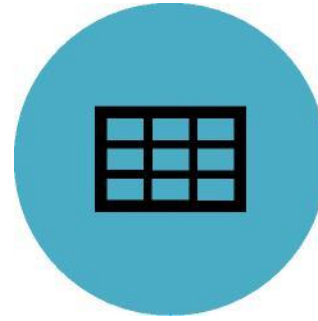


Records must be **kept for 2 years**.





Available **within 24 hours (or reasonable time if FDA agrees)**.
May be stored **offsite or by another entity** .



During an outbreak - **electronic sortable spreadsheet** within 24 hours of a request (including a **phone request**).

Compliance date

January 20, 2026

- Applies to all firms
- Provides 3 years for covered entities to work with supply chain
- We will educate before and while we regulate

Low-Cost/No-Cost Traceability Challenge

- In 2021, the US FDA issued a challenge to innovators from all disciplines to develop traceability elements that are low-cost or no-cost to the end user.
- FDA received 90 submissions and 12 winning submissions were identified
- More information about the winners can be viewed at: <https://www.fda.gov/food/new-era-smarter-food-safety/meet-winners-fdas-low-or-no-cost-food-traceability-challenge>

Available Resources – [FDA.gov](https://www.fda.gov)



- Food Traceability Final Rule
- Food Traceability Final Rule webpage

- Food Traceability List webpage
- Risk Ranking Model Results tool
- Supply Chain examples

Frequently Asked

Questions ([FAQs](#))

- Food Traceability Final Rule [Webinar](#)
- Critical Tracking Events and Key Data Elements document

- **Exemptions tool**



TRUST CODES[®]

PRODUCT CLOUD

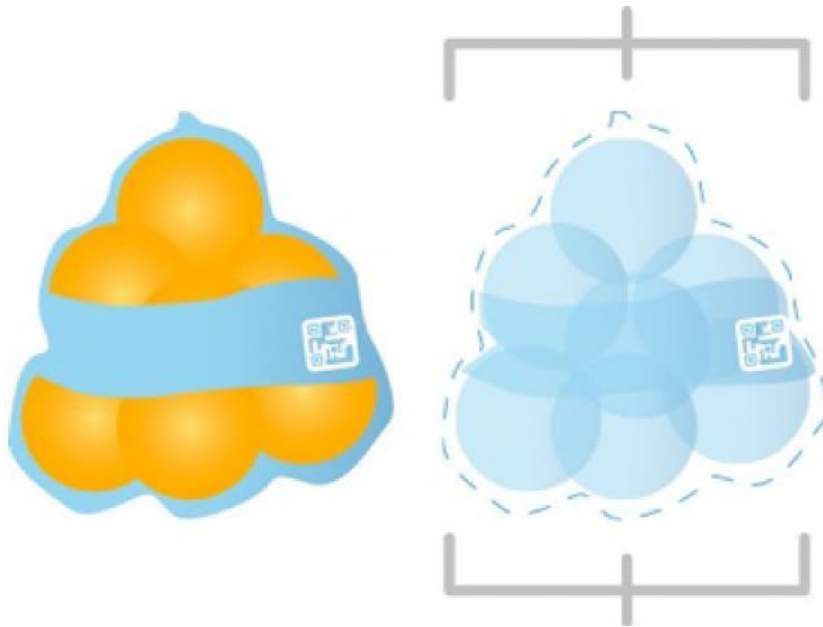


VerifyMe[®]

Consumer Engagement | Digital Brand Protection | Anti-counterfeit | End-to-end Traceability

Confidential – Commercially Sensitive. © 2023 Trust Codes Global Limited- a VerifyMe, Inc company.
Trust Codes[®] is a registered trademark of Trust Codes Global Limited in New Zealand. All Rights Reserved.

A digital twin



Traceability at an item level creates a digital twin that can be mapped across the value chain, identifying choke points, consumer behaviour, supply chain efficiency etc.

Digital Twins mean that each and every product movement can be analysed and validated.

Confidential – Commercially Sensitive. © 2023 Trust Codes Global Limited- a VerifyMe, Inc company.
Trust Codes® is a registered trademark of Trust Codes Global Limited in New Zealand. All Rights Reserved.

Standards are critically important

GS1 standards provide for data coherency and controlled interoperability between everyone in the value chain.

Trust Codes integrates all GS1 standards to provide data coherency and inter-operability otherwise there will be systemic risks related to data, privacy, and compatibility across different tracing systems.

Support for GTS2.0; EPCIS and CBV provide data coherency between different software platforms and networks.

GTS refers to Critical Tracking Events (CTEs) and Key Data Elements (KDEs) and this is flowing through to regulation like US FDA FSMA requirements for fresh food.



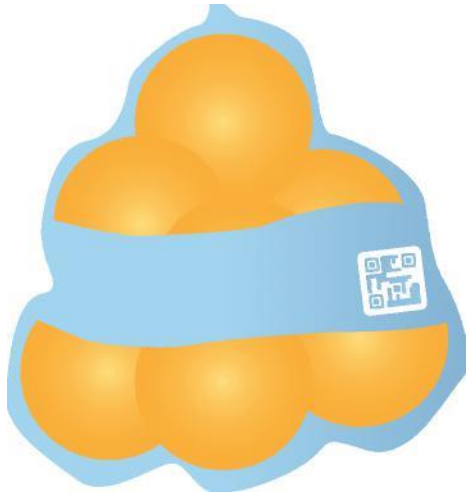
The next generation of barcodes



The GS1 Digital Link standard means we can use the same QR code for supply chain, as we do for retail, as we do for consumer engagement.

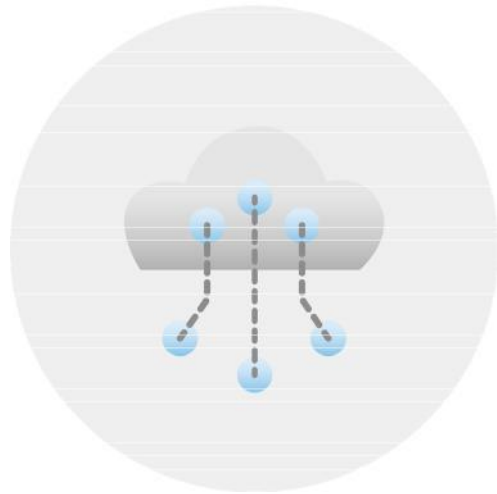
Digital Link enables sharing of a wealth of product information from multiple locations to supply chain partners, consumers and regulators, via a single scan.

Protected GS1 based item level identities



- Copy protection and anti-counterfeit algorithms identify fraud patterns and helps MFC combat counterfeiters.
- The User Experience (UX) provides reassurance to consumers,, contextually to where the consumer is located – all from the same code.
- GS1 Digital Link code format means the brand can engage with consumers on social media and retailer apps, but also use the same code to capture traceability events.
- Traceability adds to anti-counterfeit capability – for example by mapping product to expected location in market.

Our product cloud



- Connected, **unique digital licence plates** for every item
- Create personalised consumer experiences with social tracking
- Brand Protection **Machine Learning algorithms**
- End-to-End traceability
- Connected packaging and digitally connected supply chains to track impact
- Recall management
- Integration with physical packaging
- Data coherency and interoperability



Contact Us

Trust Codes Global Limited

w: www.trust.codes

e: paul@trust.codes

LinkedIn: [www.linkedin.com/
company/trust-codes-limited/](https://www.linkedin.com/company/trust-codes-limited/)

GS1 – the global language of business

GS1 is a global, not for profit, standards organisation with 2M-member companies across 116 markets worldwide.

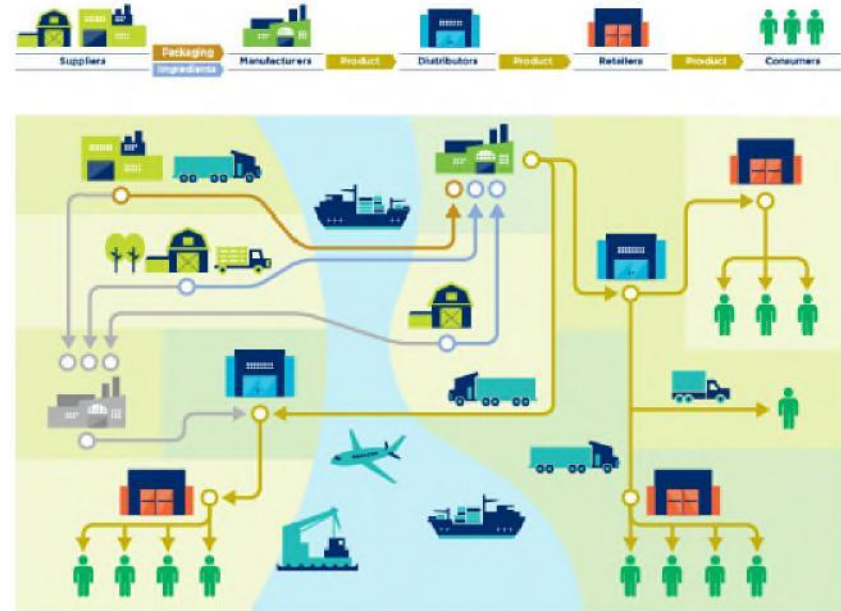
Neutral and
not-for-profit

User-driven
and governed

Global federation
with local members

Inclusive and
collaborative

Our standards provide a framework for
technology agnostic interoperability



Global partner organisations



Our ambition

Support economic growth

Increase public safety

**Drive circularity and
sustainability outcomes**

**Facilitate resilient, rules
based trade**

GS1 Standards for traceability



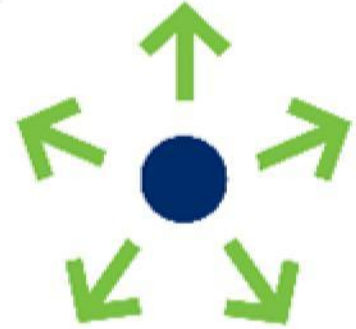
Identify

Uniquely identify products, places, shipments and assets



Capture

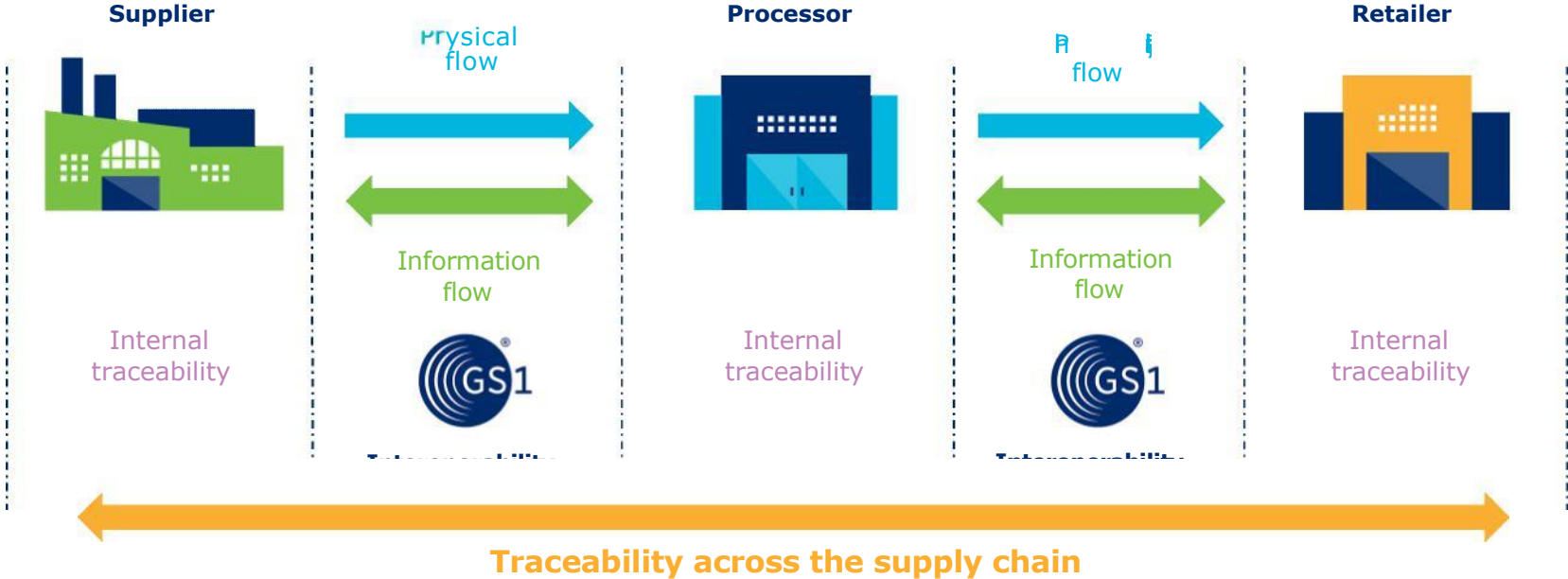
Capture identity and more in a barcode or RFID tag



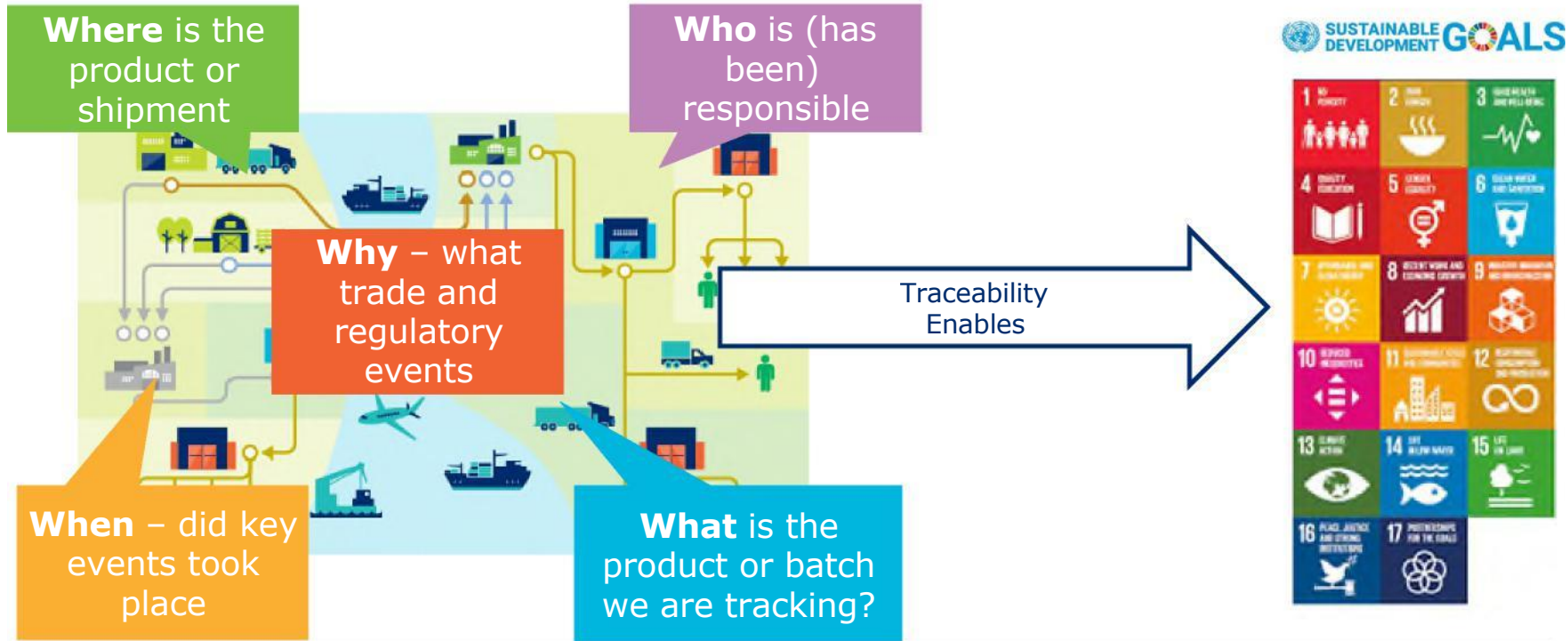
Share

Share data with trading partners, consumers and patients

Standards are a critical foundation for traceability



How GS1 Standards support traceability



4 Key Ingredients for Traceability

Unique Identification and
Data Standards
(interoperability)

Clear responsibilities across
the supply chain

Data Sharing

Product traceability and
product conformity

4 Industry Needs to consider

Scalability

Regulatory vs commercial
drivers

Harmonisation

Confidence

To sum up

There is great benefit in a principles-based approach to traceability

National Traceability Accord	
Interoperability and global data standards	
Traceability systems can deliver competitive advantages to individual companies. It is its aggregate value across the economy that will deliver greater safety for all Australians and lift Australia's brand in key export markets.	Interoperability of traceability systems is critical to ensure transparent and cost-effective implementation of solutions. Interoperability is needed within and across sectors, domestically and internationally.
Traceability insights, collaboration and sharing	Transparency with privacy
The business value of full product traceability can be harnessed through collaboration and sharing of traceability insights along with necessary data on both critical incident as well as on a regular basis.	Transparency is a key principle for responsible sharing of traceability data to establish full end-to-end product traceability. The signatories recognise that the sharing of traceability data with supply chain partners must be done with data sharing agreements and privacy protections in place.
Resolution of incident and data disposal	Traceability with purpose
Resolution of product safety incidents, including food safety, in a timely manner is one of the key criteria for successful implementation of traceability solutions.	Traceability must deliver benefits that are tangible, measurable and meaningful to consumers, industry and governments. In this respect traceability is a means to an end, rather than an objective in its own.



1310W

Bizcaps
SOFTWARE



escavpx

tad
Freshaalt

iFood DS

Eb3

irsozd.

NeXTRADE

REBULT
LIGINIFISMPIC

rwtg



Lite Is Scheer

TRUST Cote

tearLIST
NANCE



Woodworth
FX (LX)




Thank you!

Maria Palazzolo
GS1 Australia



[Grab your reader's attention with a great quote from the document or use this space to emphasize a key point. To place this text box anywhere on the page, just drag it.]

- MFC strives to improve grower's returns by exporting fresh produce to customers across the globe that demand our superior product.
- MFC, through the Citrus Export Development and Traceability Pilot, aimed to grow our export volumes whilst protecting our grower's product, and improving traceability
- The use of the simple QR Code, a code that grew in prominence during its use throughout the pandemic, has become a powerful tool in how to engage with customers, and protect and trace product through distribution channels.
- Each unit sold will contain its own unique QR Code, providing the protection of limiting the number of scans allowable before the consumer will receive a warning message



*Proudly packing and marketing
quality Australian citrus
to the world.*

MFC
MILDURA FRUIT COMPANY

www.mfc.com.au



gives us that opportunity to really define where the product may not come from, be it a farm or a packing shed that has been involved in the supply chain. We need, ultimately, to be able to respond to foodborne and fraud issues in a timely manner.”

Jack
CEO



Data is the new oil



IoT



Agricultural Robotics



Artificial Intelligence



Drones



Precision Farming



Biotechnology



Big Data



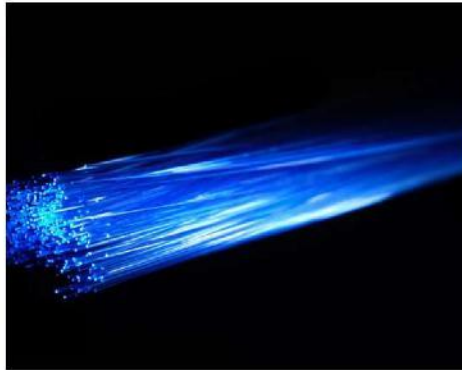
Controlled Environment

Confidential – Commercially Sensitive. © 2023 Trust Codes Global Limited- a VerifyMe, Inc company. Trust Codes® is a registered trademark of Trust Codes Global Limited in New Zealand. All Rights Reserved.

Data is the new oil



Regenerative



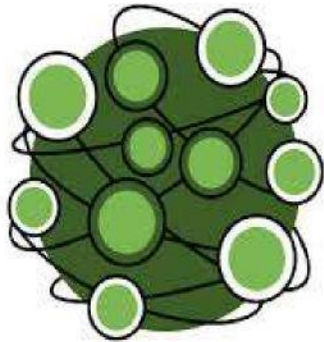
Connectivity



Connected Consumers



Sustainability & Social Licence



Supply Chain



Regulatory Data



What's in this?



You & me

Confidential – Commercially Sensitive. © 2023 Trust Codes Global Limited- a VerifyMe, Inc company. Trust Codes® is a registered trademark of Trust Codes Global Limited in New Zealand. All Rights Reserved.



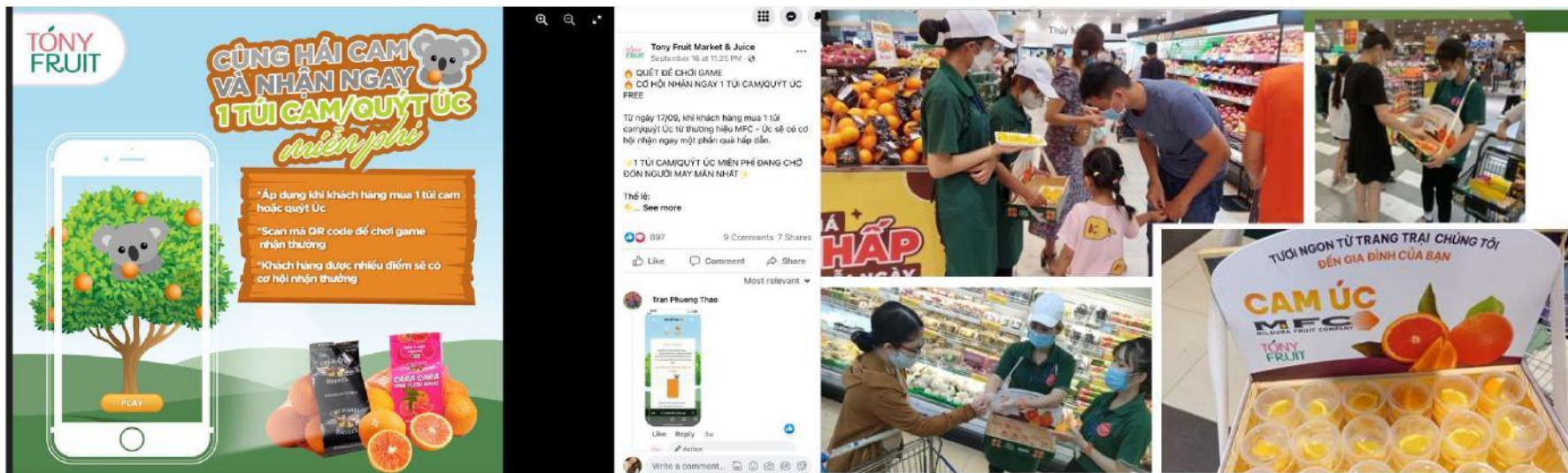
Sharing data in a fun way, that is easy for consumers to engage with develops more loyal consumers. We built an easy to play game to “grow oranges in Mildura and make juice for a koala” which resonated well with consumers. Increased engagement meant more time the brand has with the consumer, with both overt and inferred messaging about how great the fruit is.

The consumer doesn't even know it's all data driven- they just enjoy the experience and infotainment.



In-market partners and retailers use the consumer engagement to drive demand. No one can see the supply chain data behind that because it isn't intended for that recipient. The way the product cloud is designed is that information is shared with those who need it, not with everyone who wants it.

Consumers don't want data - they want information, and the more fun and informative that delivery of information is, the better it is for consumer perception and getting useful data.





Proudly packing and marketing
quality Australian citrus
to the world.

MFC
MILDURA FRUIT COMPANY

www.mfc.com.au




Scan unique QR
for traceability

- Don't underestimate the power of the QR Code
- Consumer engagement and traceability is where the power lies in promoting your brand and product
- Dandy Mandy distribution domestically and export to include the QR Code wherever allowed.



- MFC intends to utilize QR Code and other GS1 labelling
- Specific consumer engagement pieces will be developed
- The Trust Codes system will enable MFC to measure where the product is being scanned, and how many scans are taking place of the one QR Code
- In the unlikely event of a product recall MFC will be able to do this efficiently and effectively



*Proudly packing and marketing
quality Australian citrus
to the world.*

MFC
MILDURA FRUIT COMPANY

www.mfc.com.au

- MFC learnt a lot from the Pilot program and would recommend to others wanting to implement such a change to:
 - Don't try to capture everything at once
 - Partner with a supplier that truly understands your business needs
 - Take the time to plan and engage with relevant stakeholders
- Over to Paul now to provide some insights in to how it all works behind the scenes