

6th Session of the *Ad Hoc* Codex Intergovernmental Task Force on Antimicrobial Resistance

10 – 14 December, 2018
Paradise Hotel Busan, Busan, Republic of Korea

OVERVIEW



6th Session of the *Ad Hoc* Codex Intergovernmental Task Force on Antimicrobial Resistance

Venue

Paradise Hotel Busan,
Busan, Republic of Korea

Date

December 10-14, 2018

Host

Ministry of Food and Drug Safety,
Republic of Korea

TFAMR Secretariat

E-mail.
tfamr6@gmail.com

The session will begin on Monday, December 10 at 9:30am
and conclude after the report adoption on Friday, December 14.

English, French and Spanish will be the official languages
for the meeting.

REGISTRATION

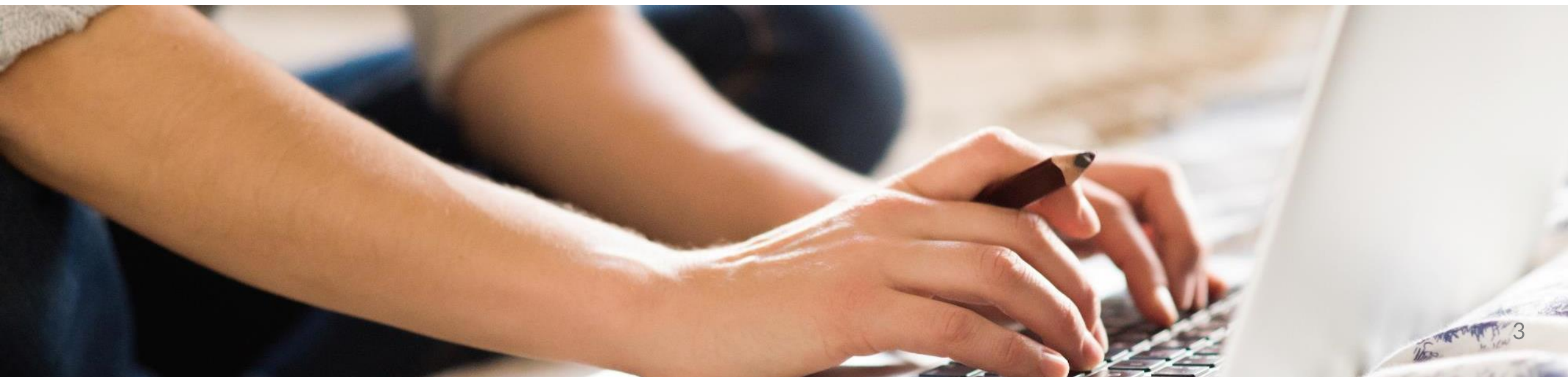
CODEX Online Registration System

Delegates are kindly requested to use the online registration system. We encourage delegates to register by November 10, 2018. Your Codex Contact Point (CCP) has been provided with a username and password for the system. Please contact your CCP for assistance in registering online.

Registration Desk

The registration desk will be open at the Paradise Hotel Busan **on Sunday, 9 December from 14:00 to 18:00 and on Monday, 10 December 2018 from 08:00 to 12:00.**

Participants are kindly requested to wear their name badges at all functions during the meeting.



VISA INFORMATION

Foreign nationals entering Korea are generally required to have a visa, while Korea's visa waiver program enables nationals of some countries to travel to Korea for certain period of time without a visa.

In order to check whether you're allowed to enter Korea without a visa, please contact a Korean embassy or consulate or visit the websites on the right.

KOREA VISA PORTAL

Korean, English, Chinese

CLICK

Korea Immigration Service

Korean, English

CLICK

Hi Korea

(e-government for foreigners)

Korean, English, Japanese, Chinese

CLICK

HOW TO GET TO BUSAN



○ Incheon Int'l Airport (ICN)

By Airport Limousines or Airport Railroad Train

▷ Please Refer to Next Page for Further Information.

○ Gimpo Int'l Airport Domestic Terminal (GMP)

Domestic flight

○ Gimhae(Busan) Int'l Airport (PUS)

○ Direct Flight to Gimhae(Busan) Int'l Airport(PUS)

▷ International Access

: 10 Countries, 25 cities, 609 direct flights(weekly)

▷ Schedule for International Flights. [CLICK](#)

From Incheon Int'l Airport to Gimpo Int'l Airport

*Operating hours and intervals may vary depending on circumstances.



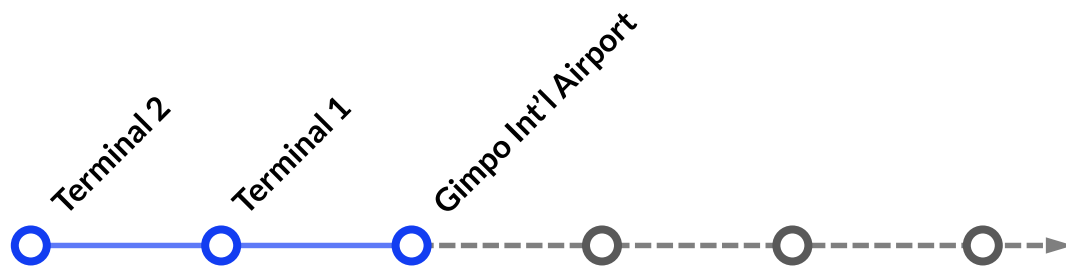
By Airport Limousines

City Airport Limousines Bus #6003 / 6008 / 6014 / 6101

Boarding Spot	Operating Hours	Interval	Travel Time	Fare (US\$)
Terminal 1 1F	05:05~23:20	15~25 min.	60 min.	Approx. 5
Terminal 2 B1	05:10~23:00		50 min.	

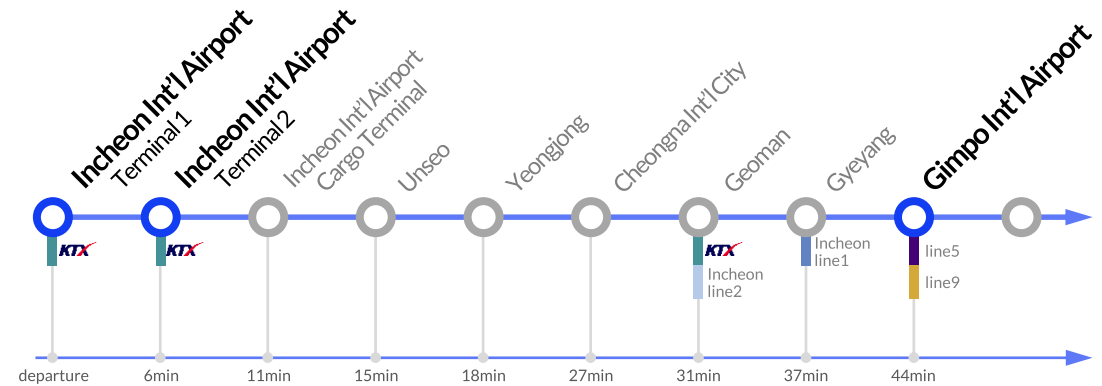
KAL Limousine Bus

Boarding Spot	Operating Hours	Interval	Travel Time	Fare (US\$)
Terminal 1 1F	05:12~22:16	20~30 min.	50 min.	Approx. 7.5
Terminal 2 B1	05:10~22:36			



By Airport Railroad Train(AREX)

Boarding Spot	Operating Hours	Interval	Travel Time	Fare (US\$)
Terminal 1 B1	05:21~23:56	6~15 min.	40~45 min.	Approx. 4.5
Terminal 2 B1	05:15~23:50			



[Incheon Airport Bus Guide](#)

[Airport Railroad Express](#)



TRANSPORTATION TO THE VENUE

(Paradise Hotel Busan)



Gimhae(Busan) Int'l Airport → VENUE

: By Airport Limousine: Bus #2

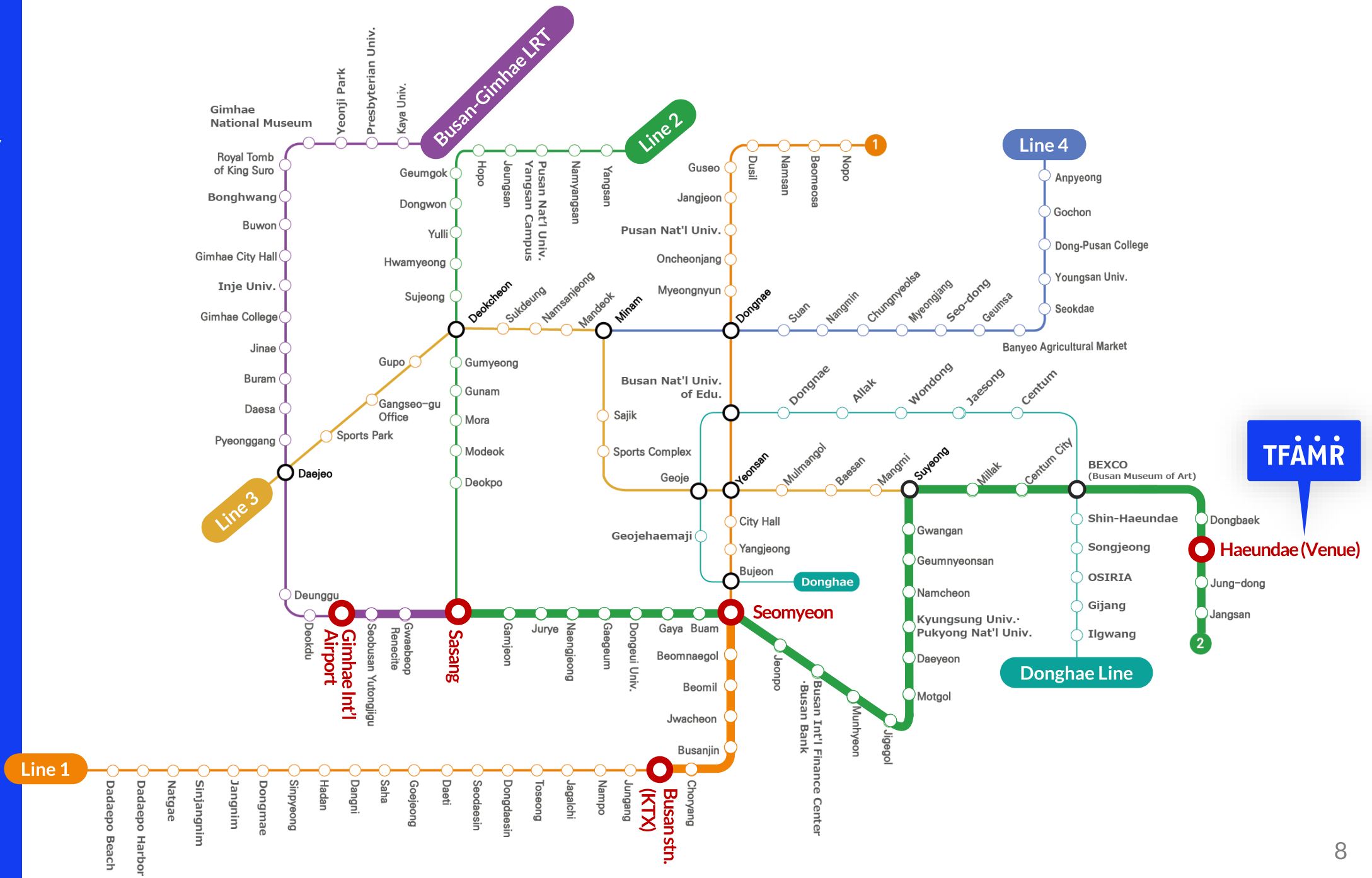
Bus Stops

Gimhae Int'l Airport ▶ Namcheon Dong ▶ Gwangsan Dong ▶
Gwangsan Subway Station ▶ Suyeong JCT ▶ Suyeong Hyundai APT ▶
Centum Hotel ▶ Centum Home Plus / BEXCO ▶ Olympic JCT ▶
Gyeongnam Marina APT ▶ Park Hayatt Busan ▶ Hanwha Resort ▶
Hyundai Hyperion ▶ The Westin Chosun Hotel ▶ Grand Hotel ▶
Haeundae Beach ▶ Seacloud Hotel ▶ **Paradise Hotel Busan** ▶ ...

Boarding Spot	Operating Hours	Interval	Travel Time	Fare (US\$)
Domestic/Int'l Terminal 1F Bus Stop 2	06:50~22:20	30min.	50min.	Approx. 7



Busan Subway Map



TFAMR

VENUE

Paradise Hotel Busan, located in Busan's Haeundae Beach.

[WEBSITE](#)

Address

1408-5, Joong-Dong, Haeundae-Gu, Busan, Korea

Tel.

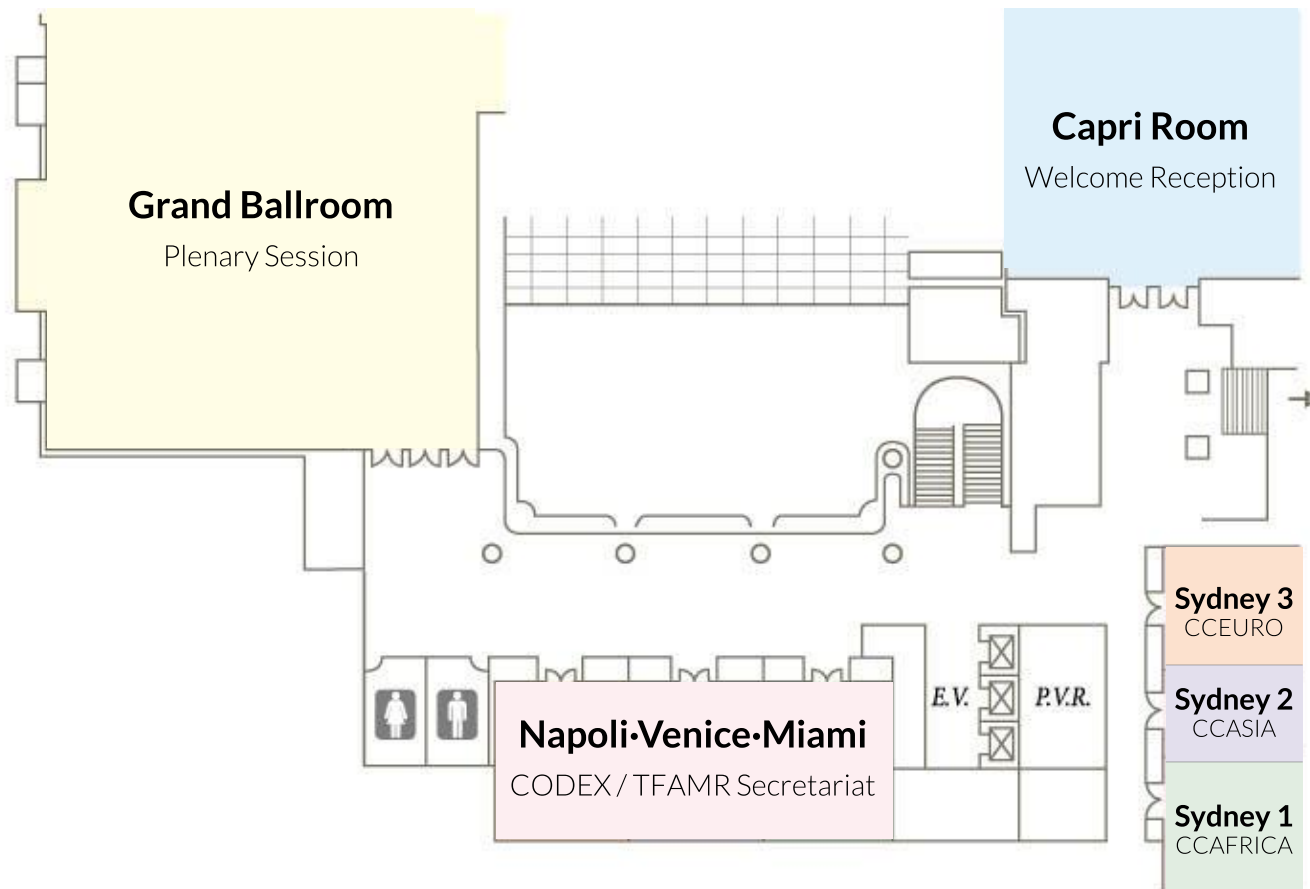
+82-51-742-2121

Facilities

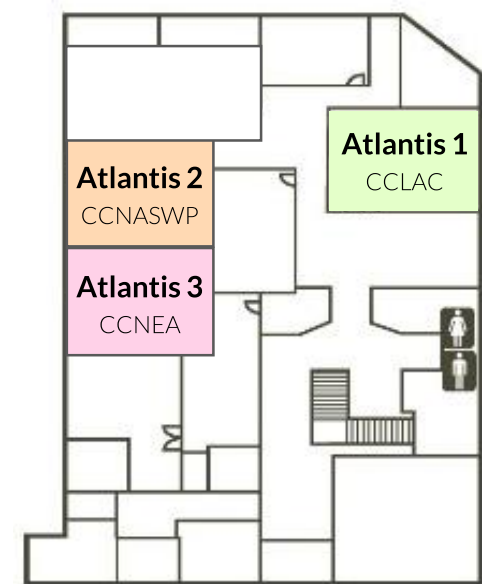
ATM (Exchange is Available at Front Desk.)
/ First Aid Service / Fitness Club / Pub & Bar etc.

MORE ABOUT VENUE Floor Map

2F



B1



Regional Convention

▷ Available From Dec. 7-14

Sydney 1	Sydney 2	Sydney 3	Atlantis 1	Atlantis 2	Atlantis 3
CAFRICA	CCASIA	CCEURO	CCLAC	CCNASWP	CCNEA

HOTEL RESERVATION

The TFAMR special room rates are available from December 7-15.

Please fill out reservation form and send it by e-mail.

[CLICK HERE](#) to download reservation form.

Reservations & Inquiries
: hyebin@hanatour.com

Venue Hotel

*Breakfast is included in the rates.



Paradise Hotel Busan

1408-5, Joong-Dong, Haeundae-Gu, Busan, Korea
▷ [Rates From: USD248](#)

Other Options



IBIS Budget Ambassador Busan Haeundae

8 Haeundaehaebyeon-ro 209beon-gi, U-dong, Haeundae, Busan
▷ [Rates From: USD89](#)



Best Western Haeundae Hotel

42 Gunam-ro, Haeundae-gu, Busan, 4894, South Korea
▷ [Rates From: USD102](#)



Ramada Encore Haeundae

Gunam-ro, Haeundae-gu, Busan, Republic of Korea
▷ [Rates From: USD115](#)



Haeundae Grand Hotel

Haeundae-Beach Road 217, Haeundae-gu, Busan
▷ [Rates From: USD150](#)

ABOUT BUSAN

Busan, a bustling city of approximately 3.6 million residents, is located on the southeastern tip of the Korean peninsula and has a harmonious relationship of mountains, rivers and sea.

Its geography includes a coastline featuring superb beaches and scenic cliffs, mountains which provide excellent hiking paths and extraordinary views with hot spring scattered throughout the city.

Its deep harbor and gentle tides allow the city to grow into the largest container handling port in the country and the fifth largest in the world.

For more details, please [CLICK HERE](#)



LOCAL ATTRACTIONS


Jagalchi Market

The Jagalchi Market is Korea's largest seafood market. A selected fish can be sliced on the spot for you to eat raw. Watching a flopping fish cleaned into sliced raw fish is in itself an amazing scene.

 Metro Line 1, Jagalchi Station (Exit 10)


Gukje Market

It is an enormous market located in Nampo-dong, which can be roughly divided into several subsections, such as Food Street, Youth Street, Everything Street, Arirang Street, and Vintage Street. It is also known as "Dottegi Market." "Dottegi Market" refers to a disorderly, bustling, and unusual flea market where people used to sell off second-hand goods and junk at wholesale, retail, or under the table prices.

 Metro Line 1, Jagalchi Station (Exit 7)

Haedong Yonggungsa Temple

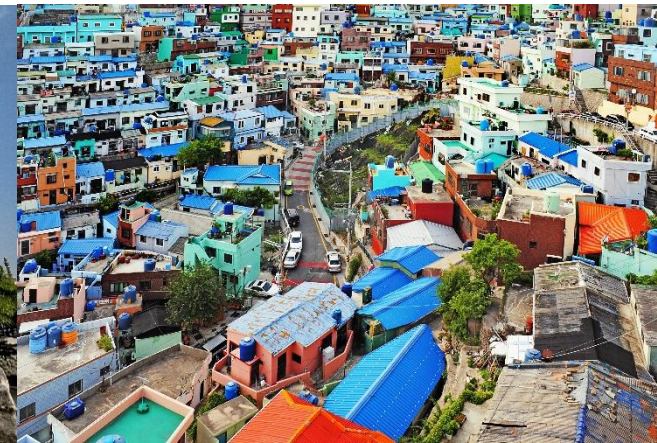
Haedong Yonggungsa Temple was first built in 1376 and is situated on the coast of the north-eastern portion of Busan. The superb attraction offers visitors the rare fine of a temple along the shore line.

 Bus No.100 from Paradise Hotel Busan bus stop(Opposite side of the hotel), 40 min.

Gamcheon Culture Village

Gamcheon Culture Village is often known as the "Machu Picchu of Korea." The houses on the terraced hillside, labyrinth-like alleyways, and stamp tour will make you want to visit the village again and again.

 Metro Line 1, Toseong Station (Exit6)



GENERAL INFORMATION

Weather in Busan

The average temperature annually is 4°C.
The weather is usually sunny and windy in winter.

Time Zone

Korea is 9 hours ahead of GMT.

Electrical Current

Electrical appliances operate on 220 volts and 60 Hz.
Plug type of C, F.

Currency

Official exchange rates as for August 2nd.
\$ 1 USD = Approx. 1, 123 KRW
€ 1 EUR = Approx. 1, 309 KRW

- ATM and Currency Exchange are available at the Airport and the Paradise Hotel Busan.