

**CODEX** COMMITTEE ON  
CONTAMINANTS IN FOODS



**11<sup>th</sup>**  
**SESSION**  
RIO DE JANEIRO  
BRAZIL

**Windsor Marapendi Hotel** | Barra da Tijuca  
03<sup>rd</sup> April - 07<sup>th</sup> April 2017

# GENERAL INFORMATION

The Eleventh Session of Codex Committee on Contaminants in Foods (CCCF) will be held from 03<sup>rd</sup> -07<sup>th</sup> April, 2017 at Windsor Marapendi Hotel, Rio de Janeiro, Brazil. The Session will begin at 09:00 hours on Monday 03<sup>rd</sup> April 2017. All meetings and registrations will take place at the venue hotel. The Session will be conducted in English, French and Spanish.

# SECRETARIAT

CCCF secretariat (Host Institution)

Ministry of Economic Affairs

NETHERLANDS

Tel: +31 6 2724 9788

E-mail: [info@codexalimentarius.nl](mailto:info@codexalimentarius.nl) and [t.z.j.akesson@minez.nl](mailto:t.z.j.akesson@minez.nl)

# CO-HOST INSTITUTION

Brazilian Health Regulatory Agency – Anvisa (Co-Host Institution)

BRAZIL

Tel: + 55 61 3462 5404

E-mail: [rel@anvisa.gov.br](mailto:rel@anvisa.gov.br)

Brazilian Codex Alimentarius Committee – CCAB

National Institute of Metrology, Quality and Technology

BRAZIL

Tel: + 55 21 2563 5543

E-mail: [codexbrasil@inmetro.gov.br](mailto:codexbrasil@inmetro.gov.br)

## SIDE EVENTS

### MONDAY 3 APRIL:

Reception for all delegates (evening)

### WEDNESDAY 5 APRIL:

Reception for Heads of Delegation (evening)

## ONLINE PRE REGISTRATION

Delegates are kindly requested to use the online registration system by accessing the following link: <http://www.fao.org/fao-who-codexalimentarius/login/en/>.

We encourage delegates to register by 03<sup>rd</sup> March 2017. Your Codex Contact Point (CCP) has been provided with a username and password for the system. Please contact your CCP for assistance in registering online.

## ONSITE REGISTRATION DESK

The Registration facilities will be open at the Venue hotel on Sunday 02<sup>nd</sup> April from 16:00 to 19:00 hours and on Monday 03<sup>rd</sup> April from 08:00 to 16:00 hours. A badge will be given to the participants, they are kindly requested to wear their name badges visibly at all functions during the meeting.

## DOCUMENTATION

Delegates are requested to bring their own documentation to the meeting; it is available in English, French and Spanish on [www.codexalimentarius.org](http://www.codexalimentarius.org). Conference Room Documents (CRD's) and any additional documentation will be available at the registration desk outside the Conference room.

## WIFI

Wifi will be available at the meeting venues (including all sub-meeting rooms) so working documents and CRD's can be downloaded during the meeting.

## FORMALITIES FOR ENTRY INTO BRAZIL



Visas: Brazil has a reciprocal visa system, so if your home country requires Brazilian nationals to secure a visa, then you'll need one to enter Brazil. If you do need a visa, arrange it well beforehand. Visas are not issued on arrival and you will not be permitted into the country without it. Visas are issued by Brazilian diplomatic offices.

Additional information on Procedures to obtain entry visa to Brazil can be found on:

<http://www.portalconsular.itamaraty.gov.br/vistos-para-viajar-ao-brasil>.

Delegates should check with the nearest Brazilian Embassy or Consulate with regards to visa requirements for entry to Brazil.

# VENUE HOTEL



The Windsor Marapendi Hotel is located at Av. Lúcio Costa, 5400 - Barra da Tijuca - Rio de Janeiro, right in front of the beautiful Barra da Tijuca beach and close to everything this modern Rio de Janeiro district has to offer. The hotel is easily accessible from the Rio's Galeão International Airport (Aeroporto Internacional Antônio Carlos Jobim) which is a distance of 34km. Santos Dumont Airport (domestic flights) is 37km away from the venue.

Delegates are responsible for their own arrangements. Due to a big event that will take place in Rio de Janeiro during the same period of CCCF and at the same region unfortunately the venue hotel is completely booked. Some availability may occur and delegates should contact the hotel directly. We advise you to book your reservation as soon as possible once Rio de Janeiro is a touristic city and this big event to be held in the region on the same period of CCCF.

Besides Hotel Windsor Marapendi there are three hotels at walking distance from the venue.

Hotel	Price*	Notes
Hotel Windsor Marapendi (Venue)	* check with hotel	<a href="mailto:reservas.marapendi@windsorhoteis.com.br">reservas.marapendi@windsorhoteis.com.br</a>
Novotel Rio de Janeiro Barra da Tijuca	* check with hotel	<a href="mailto:h8184-re@accor.com.br">h8184-re@accor.com.br</a>
Brisa Barra Hotel	BRL 295,00 (Standard) BRL 313,00 (Luxor)	Av. Lucio Costa, 5700, Barra da Tijuca <a href="mailto:vendas1@grupopam.com.br">vendas1@grupopam.com.br</a>
Pestana Rio Barra	BRL 349,00 (Apt Sea partial view) – SGL/DBL BRL 445,00 (Apt Oceânico – Sea view) - SGL/DBL BRL 785,00 (Suíte Oceânica – sea view) SGL/DBL	Av. Lucio Costa, 5650, Barra da Tijuca

\* Plus taxes

For reservations at Barra Brisa Hotel you should send e-mail to: [vendas1@grupopam.com.br](mailto:vendas1@grupopam.com.br) and inform the reservation code: ANVISA.

For reservations at Pestana Rio Barra you should send e-mail to: [reservas.barra@pestana.com](mailto:reservas.barra@pestana.com) and inform the reservation code: 11 th CODEX.

#### OTHER HOTEL OPTIONS

Hotel	Price*	Notes
Hotel Sol da Barra	* check with hotel	<a href="http://www.soldabarra880.com.br">http://www.soldabarra880.com.br</a> <a href="mailto:reservas@soldabarra880.com.br">reservas@soldabarra880.com.br</a>
Gaivota Rio Hotel	* check with hotel	<a href="http://www.gaivotahotel.com.br">http://www.gaivotahotel.com.br</a> <a href="mailto:reservas@gaivotahotel.com.br">reservas@gaivotahotel.com.br</a>
Tropical Barra Hotel	* check with hotel	<a href="http://www.tropicalbarrahotel.com.br/">http://www.tropicalbarrahotel.com.br/</a>
Hotel Ibis Barra da Tijuca	* check with hotel	<a href="mailto:h8182-re@accor.com.br">h8182-re@accor.com.br</a>
Hotel Mercure Barra da Tijuca	* check with hotel	<a href="mailto:h8180-re@accor.com.br">h8180-re@accor.com.br</a>
Hotel Ibiza	* check with hotel	<a href="mailto:reservas@ibizabarrahotel.com.br">reservas@ibizabarrahotel.com.br</a>

\* Plus taxes

Besides hotels options there are many flats or apartments nearby that can be booked through AirBnb.

# RESTAURANTS



Lunch will be offered free of charge to delegates from Monday to Wednesday at the Venue Hotel.

Barra da Tijuca is a district well served with restaurants. If you want to have dinner nearby there are different options for every budget. There are few restaurants close to the hotel and at walking distance:

- Golden Sucos – Av. Lúcio Costa, 5130 - Barra da Tijuca, Rio de Janeiro
- Hollandaise Brasserie – Av. Lúcio Costa, 5750 – Barra da Tijuca ([hollandaise.com.br](http://hollandaise.com.br))
- Maccherone – Av. Lúcio Costa, 6250 – Barra da Tijuca ([maccheronerestaurante.com.br](http://maccheronerestaurante.com.br))
- Gran Parrilla – Av. Lúcio Costa, 8000 – Barra da Tijuca ([granparrilla.com.br](http://granparrilla.com.br))
- Cuzco Restôbar – Av. Lúcio Costa, 8000 – Barra da Tijuca ([cuzcoresto.com.br](http://cuzcoresto.com.br))
- Toca da Traíra – Av. Lúcio Costa, 8000 – Barra da Tijuca ([tocadatraira.com.br](http://tocadatraira.com.br))

If you have time you should visit the restaurants situated at “Avenida Olegário Maciel” (Olegário Maciel Ave) and “Avenida Érico Veríssimo” (Érico Veríssimo) region which is 5 km distant from the Venue Hotel by the beach. At Av. Olegário Maciel you will find casual restaurants with typical Brazilian food (and the Carioca’s way of life) and other types of restaurants (Mexican, Arabic, Japanese, pizza and hamburgers). At Av. Érico Veríssimo you will find international cuisine with affordable options and also fancy restaurants.



## SUPERMARKET

The region has different supermarkets. At walking distance there is one supermarket called “Zona Sul”. They also have a restaurant and that can be an option for a quick meal if you like “Pizza and Pasta”.

Supermercado Zona Sul  
Av. Lúcio Costa, 4700 – Barra da Tijuca



## LANGUAGE

Portuguese is the local language, but it is different from the Portuguese spoken in Portugal. Few people outside of the tourist industry speak English. It is helpful to know Spanish, as many words in Portuguese are the same, but pronounced differently.



# FOREIGN EXCHANGE AND CURRENCY

The currency used in Brazil is called Real (R\$) and the foreign exchange rate is published daily in the newspapers and other specialized sites. Foreign exchange can be handled in banks, travel agencies and authorized hotels. Travelers' checks as well as currencies are easily exchanged at those locations. International credit cards are accepted at most hotels, restaurants, stores, travel agencies, car rental companies and other companies that render services to tourists. A floating exchange rate is used.

Official exchange rate as  
for January 17<sup>th</sup> 2017

1 US dollar = R\$3,21  
R\$ 1,00 = 0,31 US dollar

1 Euro = R\$3,44  
R\$1,00 = 0,29 Euro

## MONEY

There is an ATM at the hotel venue. ATMs can also be found throughout the city. Even though many ATMs advertise 24-hour service, these '24 hours' usually fall between 6am and 10pm. services to tourists. A floating exchange rate is used.

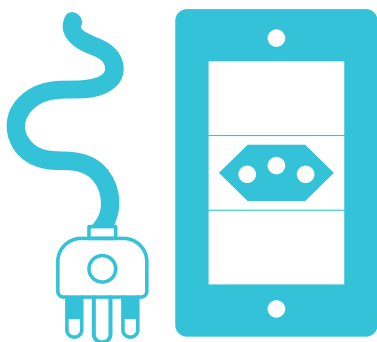


# WEATHER

Rio's summers, from December to March, are hot and humid. Temperatures rise routinely above 40°C (105°F). In the spring and fall, the temperatures stay between 20's to 30's Celsius (70's to 90°F). In the winter, June to August, it can cool off at night to as low as 15°C (59°F), but during the day temperatures range from the 20°C (70s to the mid-80s). Most rain tends to fall in the summer in short intense tropical showers, or in the winter in longer drizzly showers. The average temperatures in April are between 20-27°C (68-81°F).

# ELECTRICITY

110 V. Some hotels have plugs for both 110 and 220 volts.



# TIME ZONES

Rio de Janeiro is 3 hours behind GMT.  
During daylight saving Rio's time difference changes to 2 hours behind GMT.

# GETTING AROUND



## Galeão Airport (GIG)

International: Aeroporto Internacional do Rio de Janeiro (Galeão) - Antônio Carlos Jobim

Address: Av. 20 de Janeiro, s/nº - Ilha do Governador Rio de Janeiro/RJ

Telephone: +55 (21) 3398-4000.

Rio's Galeão international airport (Aeroporto Internacional Antônio Carlos Jobim - [www.riogaleao.com](http://www.riogaleao.com)) is 15km north of the city center at Ilha do Governador district and located 34km

away from Barra da Tijuca district. It has left-luggage facilities, internet cafe, ATMs and currency-exchange desks, and pharmacies as well as a few shops and restaurants.



## Santos Dumont Airport (SDU)

Domestic: Aeroporto Santos-Dumont

Address: Praça Senador Salgado Filho, s/nº - Centro Rio de Janeiro/RJ

Telephone: +55 (21) 3814-7070

Santos Dumont Airport, used by some domestic flights, is by the bay, in the city center, 1km east of Cinelândia metro station. It has ATMs, a few shops and an internet cafe.

## Buses

<http://www.rioonibus.com/>

Premium buses (locally known as “frescão”) operates safe air-conditioned buses from the international airport along several different routes, including to Barra da Tijuca (and vice versa) every 30 minutes from 5:30 am to 11pm and will stop wherever you ask.

It takes 75 minutes to two hours depending on traffic. Heading to the airports, you can catch this bus from in front of the major hotels along the main beaches. You have to flag down the bus as it approaches your position.

**Bus Rapid Transit (BRT)** This air-conditioned bus service uses exclusive lanes for faster connections and links the airport with the Alvorada bus station in Barra da Tijuca. There is an express route, making stops at the Vicente de Carvalho and Madureira metro stations, and a local route, making about 50 stops along the way. Buses leave from outside the arrivals level, operating 24 hours a day, 7 days a week, and a single ticket costs R\$ 3,80.

While in town the city buses are frequent and cheap. Rio’s BRS (Bus Rapid System) features dedicated public transportation corridors in Copacabana, Ipanema, Leblon and Barra da Tijuca. Fares on buses cost R\$ 3,80. Every bus has its key destination displayed on the illuminated signboard in front. You have to flag down the bus as it approaches your position.

## Taxi

Yellow-and-blue comum (common/standard) taxis from the airport are generally safe. Radio taxis (special taxis) are safer, but more expensive. A ride from the airport to Barra da Tijuca costs around R\$90 to R\$110, depending on traffic. A charge per piece of luggage may also apply. The special taxis charge a set fare of about R\$150 to Barra da Tijuca. It is payable by credit card (or cash) at the counters just before leaving the international arrivals area.



Keep in mind that traffic can lead to long delays on the return journey to the airport. Allow up to two/three hours during peak times (4pm to 7pm).

You also have the option to download on your mobile phone some Taxi App or other means of transport App.



## Light Rail

Rio's new light rail (the VLT), runs from the Santos Dumont Airport to the Rio de Janeiro bus station. This is not particularly useful for travelers, unless you are catching an onward bus or staying near the downtown area.

## Metro

<https://www.metrorio.com.br>

Rio's subway system is an excellent, speedy way to get around. It's open from 5am to midnight, Monday through Saturday and 7am to 11pm on Sunday and holidays. There are three lines that are air-conditioned, clean, fast and safe.

Line 1 goes from General Osório Station (Ipanema) to Uruguai Station (Tijuca) connecting to Line 4 on General Osório Station and goes to Jardim Oceânico Station (Barra da Tijuca).

Line 1 and Line 2 are connected in different stations. Line 2 goes to Maracanã Station (where the stadium is located) with final stop at Pavuna Station (suburbs of Rio de Janeiro).

The Metro is also connect to the "Metro na Superfície" (Metro Buses)

At Barra da Tijuca (Jardim Oceânico Station) the Metro is connected to the BRT Buses.



You can buy one-way, round-trip or 10-ride tickets. A basic single costs R\$ 4,10, and there's no discount for round-trip or multiple-ride tickets, although you can connect to an Integração bus for free (Metro Buses). Just be sure to request a bilhete integração (integrated ticket) at the ticket booth. Free subway maps are available at most ticket booths.

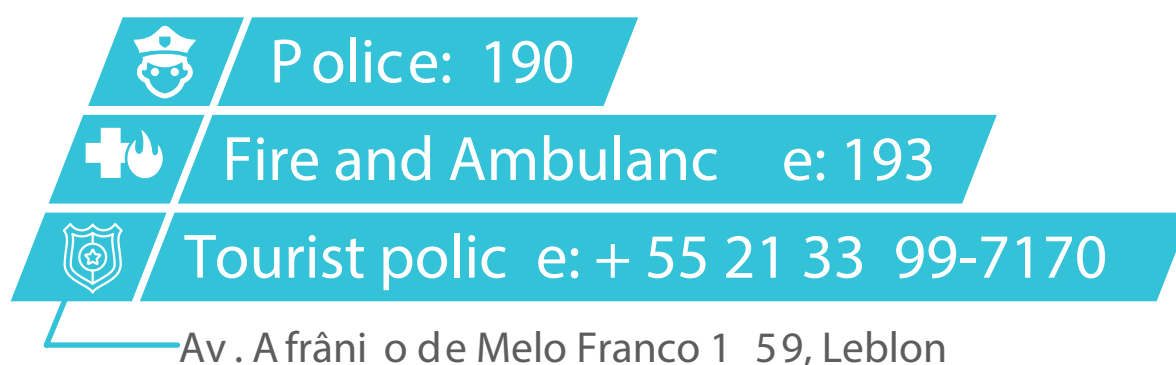
## Bike Shared-bike scheme

Bike Rio has numerous stations around town. You'll need a local cellphone (mobile) number to release the bikes at each station.

## Medical services

There are different pharmacies at walking distance from the Venue Hotel. In town you will also find pharmacies and a number of which stay open 24 hours.

## Emergencies



## Hospitals

Brazil is covered by a public health system and available to foreign visitors.

Emergency rooms can be found at:

- Lourenço Jorge Hospital, Av. Ayrton Senna, 2000 - Barra da Tijuca (+55 21 3111-4603)
- Miguel Couto Hospital, Rua Bartolomeu Mitre 1108 - Leblon (+55 21 3111-3800)
- Souza Aguiar Hospital, Praça da Republica 111 - Centro (+55 21 3111-2629)

Private emergency rooms can be found at:

- Barra D'or Hospital - Av. Ayrton Senna, 3079 - Barra da Tijuca (+55 21 2430-3600)
- Hospital Samaritano Barra - Av. Jorge Curi, 550b - Barra da Tijuca (+55 21 3263-1000)
- Cardio Trauma Ipanema, Rua Farme de Amoedo 86, Ipanema (+55 21 2525-1900)
- Copa D'or, Rua Figueiredo de Magalhães 875, Copacabana (+55 21 2545-3600)

Taxes: The city of Rio charges a 5% accommodations tax, collected by the hotel operators. This amount will be added to your bill. Hotels may also add a 10% service charge to your bill. There are no taxes on retail items.



# MAIN PLACES OF INTEREST

Located on the Brazilian Atlantic coast and surrounded by a heavenly landscape in Guanabara Bay, Rio de Janeiro is waiting for you to transmit its warmth and joy. Its famous beaches of Barra da Tijuca, Copacabana, Ipanema and Leblon have been the subject of hundreds of songs and are visited each year by thousands of tourists. Two characteristic symbols that identify the city of Rio are: Pão de Açúcar (Sugar Loaf) a mountain whose top it is possible to visit by cable car, and Cristo Redentor (Christ the Redeemer) of forty meters high on the top of the Corcovado, the mountain that dominates the city with its seven hundred meters. Rio was the former capital of the Portuguese colonies in America and today has a population of more than six million people that celebrate its joy each year.

Rio de Janeiro has recently hosted the Rio 2016 Olympic Games and the Opening Ceremony took place at Maracanã Stadium. Maracanã Stadium also hosted two World Cup finals.

The Tijuca National Park – the world's largest urban forest – is also a great place for walks and sports, such as rock climbing and free flight.

For more tourist information visit: <http://www.visitbrasil.com/en/destinos/rio-de-janeiro/>



# ESSENTIAL PHRASES

Good morning: Bom dia

Good afternoon (until 6 p.m.): Boa tarde

Good evening / Good night: Boa noite

Good-bye: Tchau! / Até logo!

Yes: Sim

No: Não

Thank you very much: Muito obrigado(a)

No, thank you: Não, obrigado(a)

Please: Por favor

Where can I find a pharmacy: Onde é que há uma farmácia?

Where is the nearest police station: Onde é a polícia?

Where can I take a taxi: Onde (é que) posso apanhar um táxi?

One ticket, please: Um bilhete, por favor

Excuse me, where is Hotel (...): Desculpe, onde fica o Hotel (...)?

I'd like to reserve a room: Queria reservar um quarto?

I'd like to pay: Queria pagar.

How much is it: Quanto custa?

We'd like (...): Queríamos (...).

I'd like (...): Queria (...).