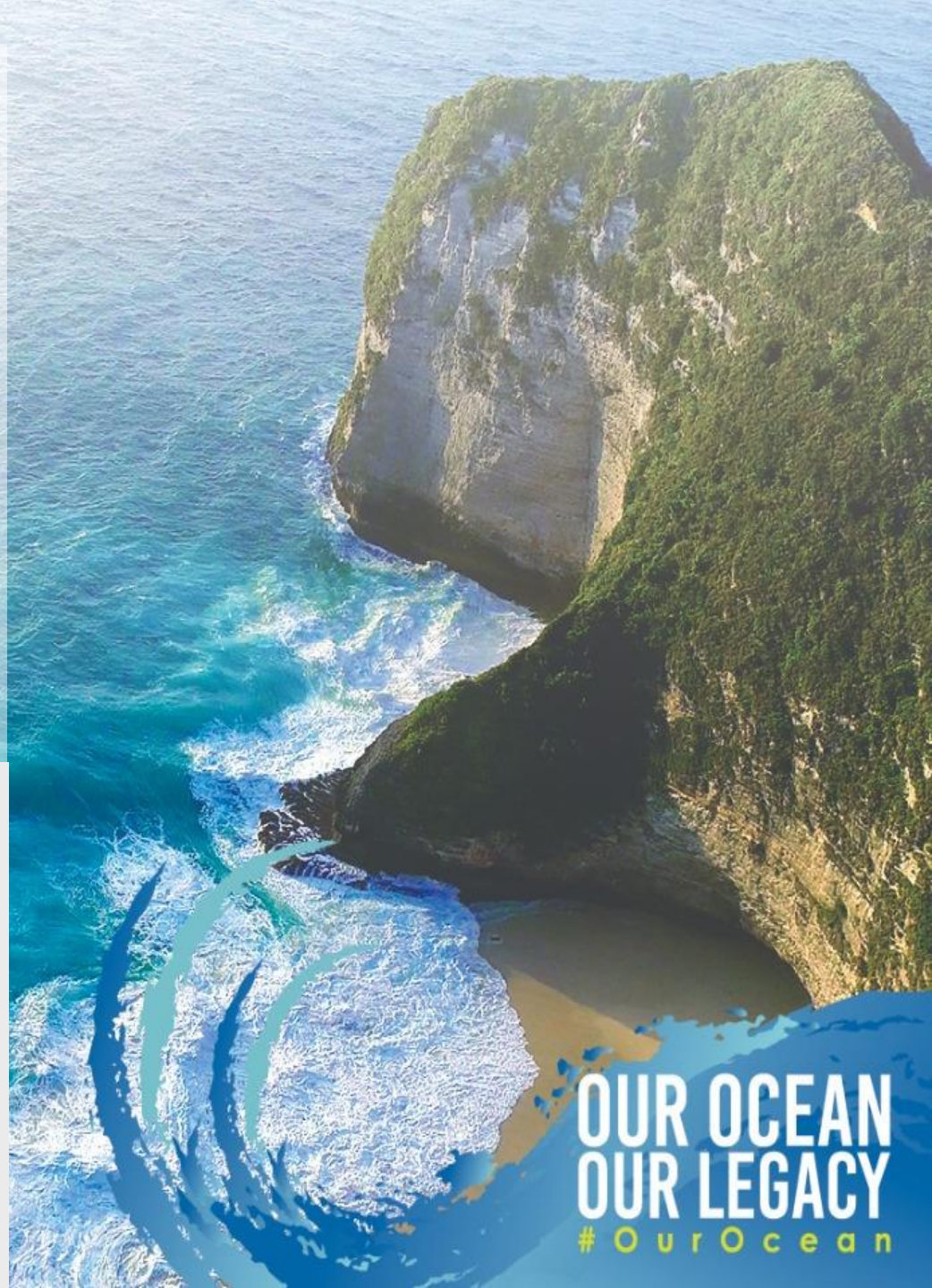
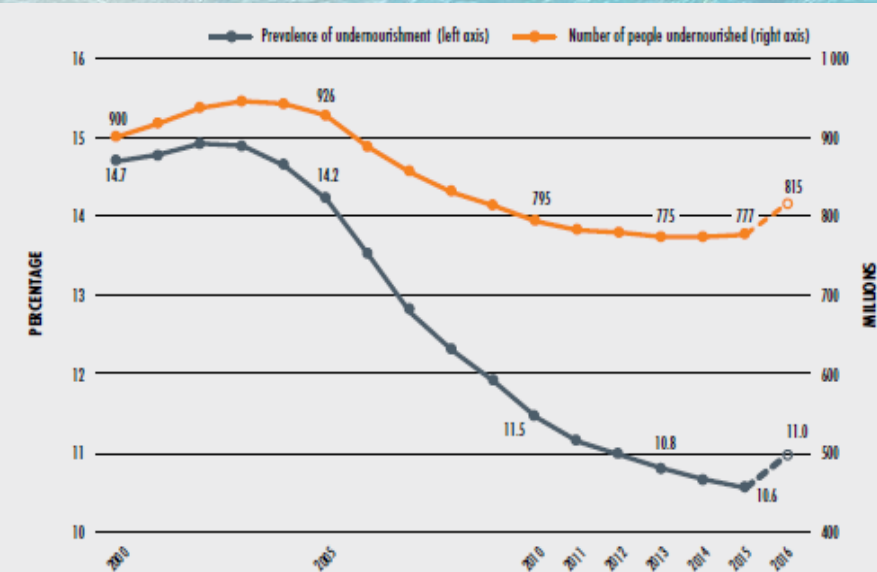


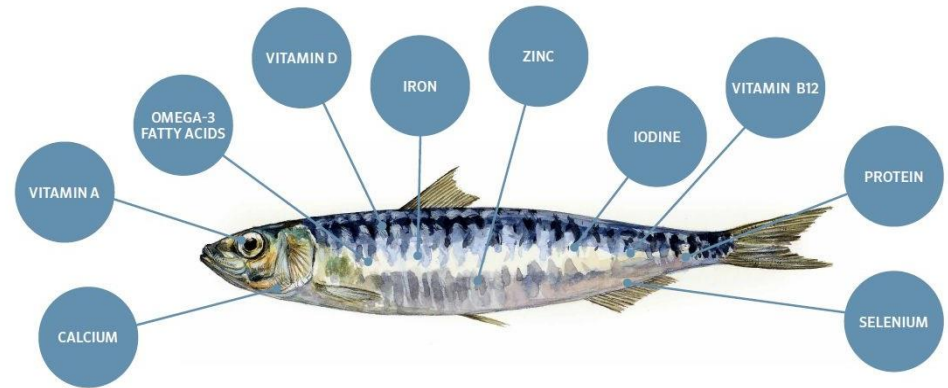
# Fisheries: feeding humanity in 2030

Àrni M Mathiesen

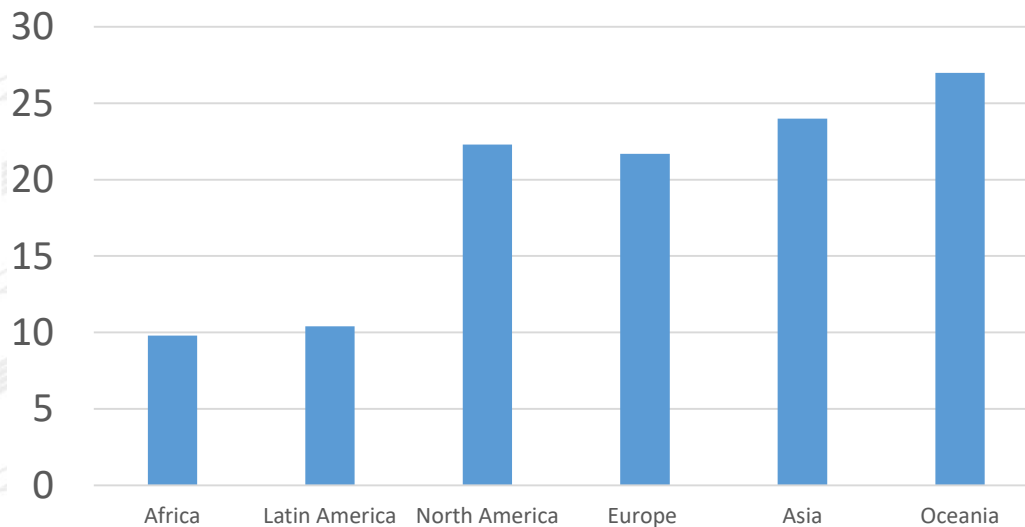
FAO, Fisheries and Aquaculture  
Bali, Indonesia  
29-30 October 2018



# Fish = Food + Livelihoods + Trade



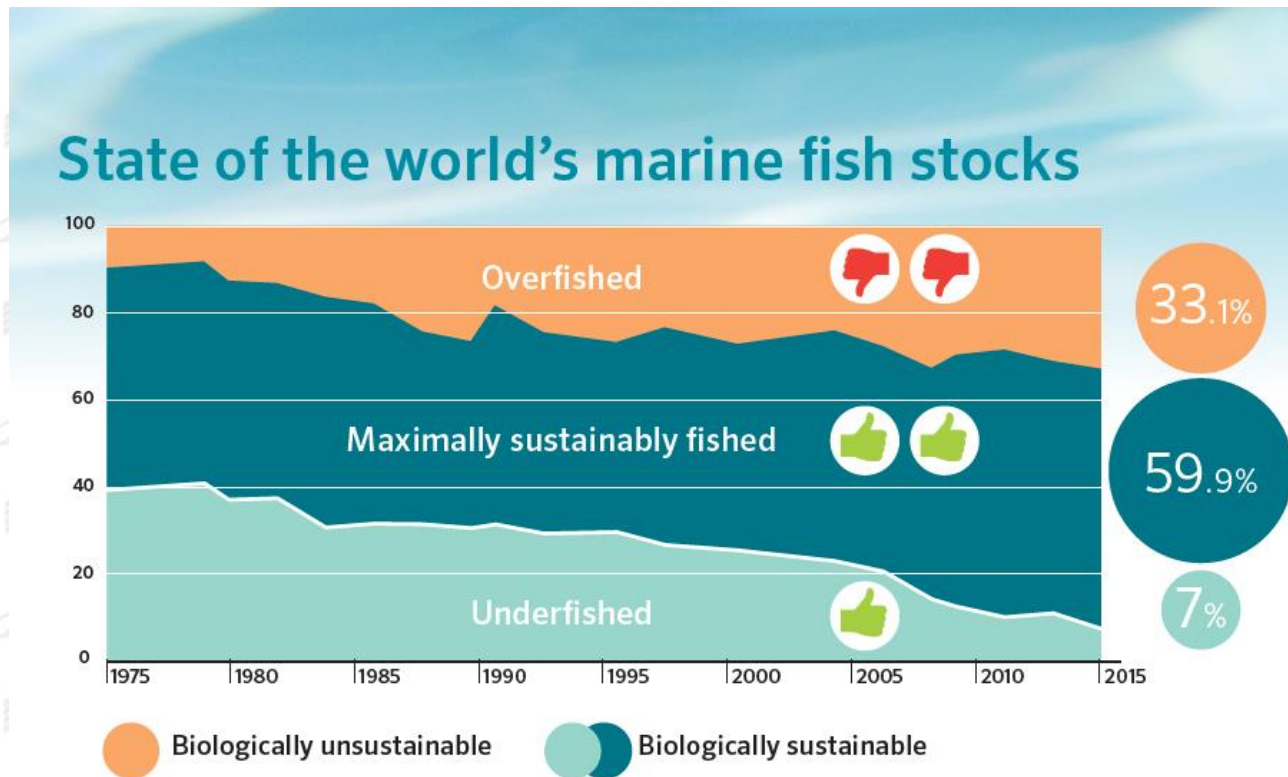
Annual per capita consumption  
(kg - live weight equivalent)



- Fish account for about 17% of animal protein consumed by the global population
- 12% of world population's livelihood depend on fish (200 million jobs along value chain)
- 54% of fish exports worth 80 billion USD from developing countries



# Status of Fishery Resources



**Continues to show worrying trends:**

Stocks fished within biologically sustainable levels decreased from 90.0 in 1974 to 66.9 percent in 2015

The global picture masks signs of recovery in the developed world

The sustainability divide between developed and developing countries constitutes a major challenge to achieving SDG14.4

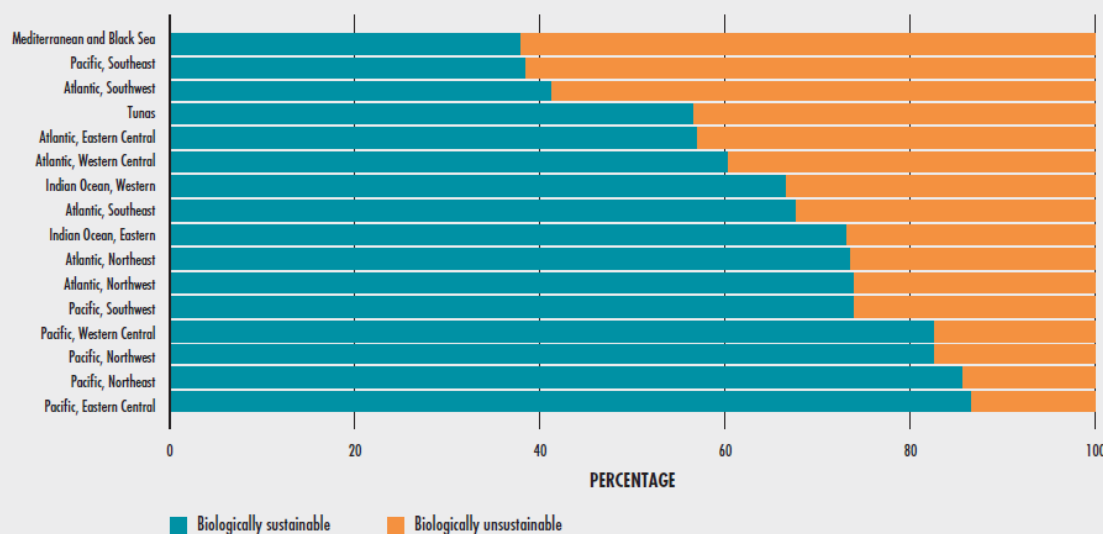


# Status of Fishery Resources

- **Highest percentage of unsustainable stocks:**

- the Mediterranean and Black Sea (62.2 percent Area 37)
- the Southeast Pacific (61.5 percent (Area 87))
- Southwest Atlantic (58.8 percent, Area 41)

FIGURE 15  
PERCENTAGES OF STOCKS FISHED AT BIOLOGICALLY SUSTAINABLE AND UNSUSTAINABLE LEVELS  
BY FAO STATISTICAL AREA, 2015



NOTE: Tuna stocks are singled out as they are largely migratory and straddling across statistical areas.



# Prospects 2050 - Sector Contributions to Global Growth in Fish Demand (FAO Blue Growth Initiative)



*"By 2050 we need 50% more food than we produce today to meet the demand of the population"*

