

ANNEX III

Statistical Tables

It is necessary to collect and present relevant statistical information globally and regionally which would support, illustrate, elaborate and explain as much as possible the key points being made in this report. However, as noted in this report, reliable urban-rural breakdown, that is up-to-date and comparable internationally, for relevant indicators is not available. The best we can do at present is to look at national aggregate values for the indicators and observe how they vary in relation to proportions of rural population in the countries. Accordingly a series of statistical tables based on available international sources is presented in this annex. Existing international databases have been relied upon and an attempt has been made to make these as comprehensive as possible in terms of coverage of countries and regions and relevant indicators.

Various relevant social and economic indicators for countries ranked by the proportion of rural population in the respective countries are presented (Table: S4). In addition to the ranking of countries for different indicators, statistical table showing actual values for the indicators ranked by proportion of rural population are presented in other tables in this annex.

These statistics primarily make the point that a high proportion of rural population is associated with low human development indicators. The scatter diagrams and trend-lines on individual indicators against proportion of rural populations for selected countries shown in Figures S2 to S5 make the same point. These also support the argument that high rural population ratios are both the cause and the consequence of low development indicators of a country.

1. Notes on Data Sources

The statistical tables are based on the latest available data from UNESCO Institute of Statistics (UIS), supplemented by other sources, as noted below. They present trends observed during 1999-2010.

The UIS data are supplemented by demographic and economic statistics collected or produced by other international organisations, including the United Nations Development Programme (UNDP), the United Nations Children's Fund (UNICEF), the United Nations Population Division (UNPD), the World Bank and the World Health Organisation (WHO). Unless indicated otherwise, projections are based on current trends. They, therefore, do not take into account the possible impact of shifts in policy and programmes that may occur in various countries from time to time.

The most recent data on pupils, students and education expenditure presented in these statistical tables are for the school year ending in 2008. They are based on survey results reported to and processed by the UNESCO Institute for Statistics (UIS) before the end of May 2010. For further details, refer to statistical tables in EFA Global Monitoring Report 2011.

The statistical tables list a total of 194 countries and territories. The data on demographic and population indicators are based on the 2008 revision of population estimates produced by the United Nations Population Division (UNPD). Because of possible differences between national population estimates and those of the United Nations, these indicators may differ from those published by individual countries or by other organisations. The UNPD does not provide data by single year of age for countries with a total population of fewer than 50,000. Where no UNPD estimates exist, national population figures, when available, or UIS estimates were used to calculate enrolment ratios.

Countries with population of less than half a million and countries belonging to the category of "developed region" have not been included in the statistical tables and in analysing correlation trends.

Composition of Regions

Arab States (20 countries/territories)

Algeria, Bahrain, Djibouti, Egypt, Iraq, Jordan, Kuwait, Lebanon, Libyan Arab Jamahiriya, Mauritania, Morocco, Oman, occupied Palestinian territory, Qatar, Saudi Arabia, Sudan, Syrian Arab Republic, Tunisia, United Arab Emirates and Yemen.

Annex III

Measurement of Skills for People in Rural Transformation

Central and Eastern Europe (21 countries)

Albania, Belarus, Bosnia and Herzegovina, Bulgaria, Croatia, Czech Republic, Estonia, Hungary, Latvia, Lithuania, Montenegro, Poland, Republic of Moldova, Romania, Russian Federation, Serbia, Slovakia, Slovenia, the former Yugoslav Republic of Macedonia, Turkey and Ukraine.

Central Asia (9 countries):

Armenia, Azerbaijan, Georgia, Kazakhstan, Kyrgyzstan, Mongolia, Tajikistan, Turkmenistan and Uzbekistan.

East Asia and the Pacific (33 countries/territories)

East Asia (16 countries/territories)

Brunei Darussalam, Cambodia, China, Democratic People's Republic of Korea, Indonesia, Japan, Lao People's Democratic Republic, Macao (China), Malaysia, Myanmar, Philippines, Republic of Korea, Singapore, Thailand, Timor-Leste and Vietnam.

Pacific (17 countries/territories)

Australia, Cook Islands, Fiji, Kiribati, Marshall Islands, Micronesia (Federated States of), Nauru, New Zealand, Niue, Palau, Papua New Guinea, Samoa, Solomon Islands, Tokelau, Tonga, Tuvalu and Vanuatu.

Latin America and the Caribbean (41 countries/ territories)

Caribbean (22 countries/territories)

Anguilla, Antigua and Barbuda, Aruba, Bahamas, Barbados, Belize, Bermuda, British Virgin Islands, Cayman Islands, Dominica, Grenada, Guyana, Haiti, Jamaica, Montserrat, Netherlands Antilles, Saint Kitts and Nevis, Saint Lucia, Saint Vincent and the Grenadines, Suriname, Trinidad and Tobago, and Turks and Caicos Islands.

Latin America (19 countries)

Argentina, Bolivia (Plurinational State of), Brazil, Chile, Colombia, Costa Rica, Cuba, Dominican Republic, Ecuador, El Salvador, Guatemala, Honduras, Mexico, Nicaragua, Panama, Paraguay, Peru, Uruguay and Venezuela (Bolivarian Republic of).

North America and Western Europe (26 countries / territories)

Andorra, Austria, Belgium, Canada, Cyprus, Denmark,

Finland, France, Germany, Greece, Iceland, Ireland, Israel, Italy, Luxembourg, Malta, Monaco, Netherlands, Norway, Portugal, San Marino, Spain, Sweden, Switzerland, United Kingdom and United States.

South and West Asia (9 countries)

Afghanistan, Bangladesh, Bhutan, India, Islamic Republic of Iran, Maldives, Nepal, Pakistan and Sri Lanka.

Countries in transition (12)

Countries of the Commonwealth of Independent States, including 4 in Central and Eastern Europe (Belarus, Republic of Moldova, Russian Federation and Ukraine) and the countries of Central Asia minus Mongolia.

Developed countries (44)

North America and Western Europe (minus Cyprus and Israel); Central and Eastern Europe (minus Belarus, Republic of Moldova, Russian Federation, Turkey and Ukraine); Australia, Bermuda, Japan and New Zealand.

Developing countries (148)

Arab States; East Asia and the Pacific (minus Australia, Japan and New Zealand); Latin America and the Caribbean (minus Bermuda); South and West Asia; Sub-Saharan Africa; Cyprus, Israel, Mongolia and Turkey.

Sub-Saharan Africa (45 countries)

Angola, Benin, Botswana, Burkina Faso, Burundi, Cameroon, Cape Verde, Central African Republic, Chad, Comoros, Congo, Côte d'Ivoire, Democratic Republic of the Congo, Equatorial Guinea, Eritrea, Ethiopia, Gabon, Gambia, Ghana, Guinea, Guinea-Bissau, Kenya, Lesotho, Liberia, Madagascar, Malawi, Mali, Mauritius, Mozambique, Namibia, Niger, Nigeria, Rwanda, Sao Tome and Principe, Senegal, Seychelles, Sierra Leone, Somalia, South Africa, Swaziland, Togo, Uganda, United Republic of Tanzania, Zambia and Zimbabwe.

Symbols used in the Statistical Tables

The following symbols are used in the statistical tables:

* National estimate

** UIS estimate

... Missing data

— Magnitude nil or negligible

. Category not applicable

Before presenting the country tables (S3 to S7), a brief discussion of statistical trends on relevant demographic factors and socio-economic deprivation is presented below (Tables S1 and S2 and Figures S1 to S11).

2. Rural People – Some Empirical Trends

2.1 Mounting Demographic Pressure

The population of the developing world is still more rural than urban: some 3.1 billion people, or 55 percent of the total population, live in rural areas. However between 2020 and 2025, the total rural population will peak and then start to decline, and the developing world's urban population will overtake its rural population. In Latin America and the Caribbean, and in East and South East Asia, the number of rural people is already in decline. Elsewhere, the growth of rural populations is slowing. Numbers will start to decline around 2025 in the Middle East and North Africa and in South and Central Asia, and around 2045 in Sub-Saharan Africa (IFAD: 2011). Thus, the population in developing regions will remain predominantly rural until 2020. After

that, the size of the rural population is expected to decline due to slower population growth and rapid urbanisation in most countries. The share of the population living in rural areas is declining on all continents, although it is projected to remain above 50 percent in South and Central Asia and Sub-Saharan Africa until 2030 (Figure S1).

Figure S1(A) shows that the world population increased from 6 billion in 1999 to 6.9 billion in 2010 – the highest increase (269.6 million) being recorded by the South and West Asian region followed by East Asia and the Pacific (170.3 million). Central and Eastern Europe is the only region recording a decline (one million) in total population reflecting sustained reductions in fertility in this region during the period under consideration.

Figure S1(B) represents the proportion of rural population in the total population during 1999-2010. Among the developing regions, South and West Asia and Sub-Saharan Africa are the only regions with mounting rural population. Rural population in these two regions accounts for nearly one-third of total population. Rural population has also grown in the North American and Western European region. However, this increase can be associated with recent efforts in the European Union (EU) toward changes in the concept of rural areas. It is also explained by the prevalence of the current financial crisis as a result of which migrant workers in the European Union are returning back to

Table S1 World Population 1999-2010

Regions	Population (Million) Total		Rural Population (% in Total)	
	1999	2010	1999	2010
Arab States	271.6	347.6	29.9	30.9
South & West Asia	1,434.6	1,704.2	72.8	67.2
Central & Eastern Europe	401.6	400.6	36.7	37.7
Central Asia	73.3	80.1	50.1	51.5
East Asia & Pacific	2,006.3	2,176.6	46.7	47.4
Latin America & the Caribbean	508.6	584.8	36.1	38.5
North America & Western Europe	704.2	763.3	22.5	21.3
Sub-Saharan Africa	614.8	807.2	65.8	60.8
WORLD	6,015.0	6,908.7	53.1	50.1

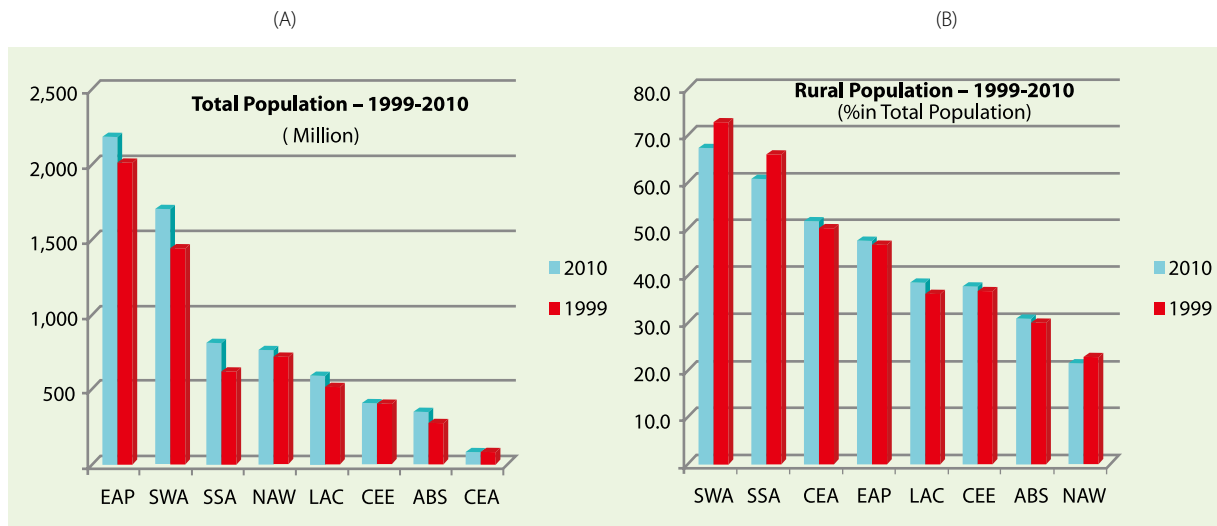
Note: The total of regions may not add to the World total as countries with half a million or less population are not included in the regional totals.

Source: Human Development Report, 2011.

Annex III

Measurement of Skills for People in Rural Transformation

Figure S1 Total and Rural Population – 1999 and 2010



SWA = South West Asia; SSA = Sub-Saharan Africa; CEA =Central Asia; EAP = East Asia and the Pacific; LAC = Latin America and the Caribbean; CEE= Central and Eastern Europe; ABS =Arab States; NAW = North America and Western Europe

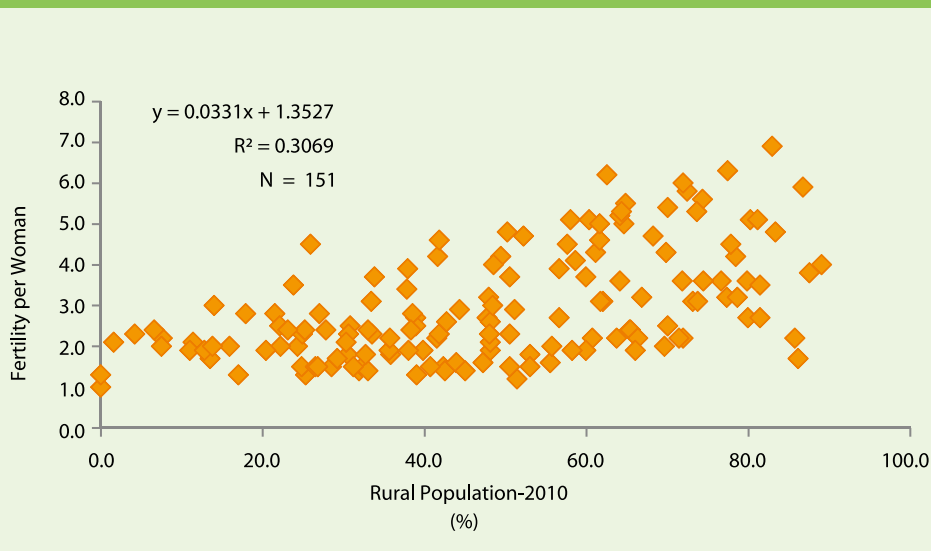
Source: Human Development Report, 2011.

rural areas (OECD: 2008).

Figure S2 shows the relationship between rural population and women fertility. It highlights that high rural population proportions are positively and significantly related with each other. Rural areas are generally characterised

with high fertility rates which in turn have historically been strongly correlated with poverty, high childhood mortality rates, low status and educational levels of women, deficiencies in reproductive health services, and inadequate availability and acceptance of contraceptives. Falling fertility rates and the demographic transition are generally

Figure S2 Rural Population and Fertility per Woman



Source: Trend line based on data from Human Development Report, 2011.

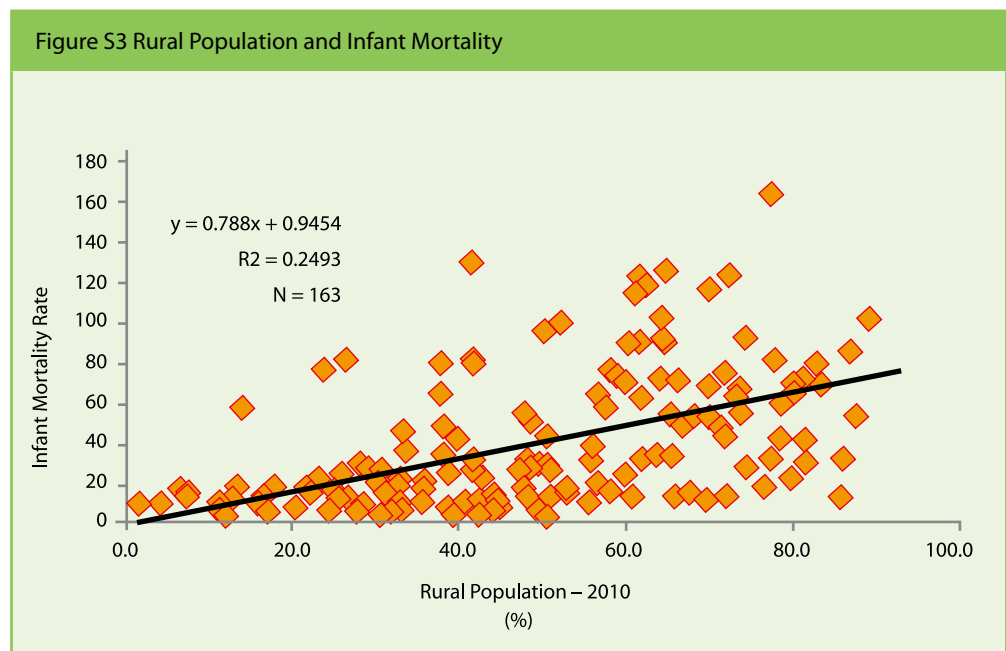
associated with improved standards of living, such as increased per capita incomes, increased life expectancy, lowered infant mortality, increased adult literacy, and higher rates of female education and employment.

Even with improved economic conditions, nations, regions, and societies will experience different demographic patterns due to varying cultural influences. The value placed upon large families (especially among underprivileged rural populations in less developed

countries who benefit least from the process of development), the assurance of security for the elderly, the ability of women to control reproduction, and the status and rights of women within families and within societies are significant cultural factors affecting family size and the demand for family planning services.

Even with a demand for family planning services, the adequate availability of and access to family planning and other reproductive health services are essential in facilitating slowing of the population growth rate. Also, access to education and the ability of women to determine their own economic security influence their reproductive decisions.

The relationship between infant mortality and size of rural population is shown in Figure S3. The figure clearly shows a significant direct relation between the two. That is, devel-



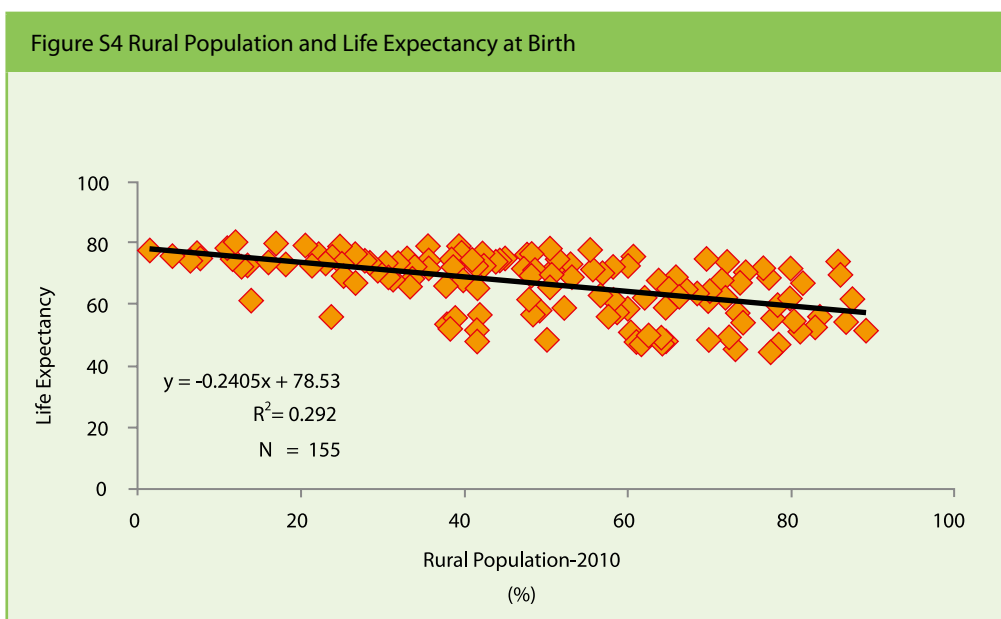
Source: Correlation trend line based on data from Human Development Report, 2011.

oping countries with high infant mortality rates are those having relatively high rural population.

The World Health Organisation (WHO) estimates that in 2005 over 500,000 women died from pregnancy- and birth-related causes. A woman in a developing country is 97 times more likely to die as a result of pregnancy than a woman in a developed country. The majority of these deaths occur during and immediately following birth:

25% are caused by severe bleeding, 15% by infection, 12% by eclampsia (a seizure disorder), and 8% by obstructed labour. The remaining deaths are due to unsafe abortion (13%), other direct causes (8%), and indirect causes such as HIV and malaria which may be aggravated by pregnancy. The technologies needed to prevent deaths from most of these causes exist (WHO: 2009).

Figure S4 highlights the relationship between rural



Source: Correlation trend line based on data from Human Development Reports.

Annex III

Measurement of Skills for People in Rural Transformation

population and the average expectancy of life. The graph clearly shows a negative relationship between them.

Population ageing is poised to become a major issue in developing countries, which are projected to age swiftly in the first half of the twenty-first century. The proportion of older persons is expected to rise from 8 to 19 percent by 2050, while that of children will fall from 33 to 22 percent. This demographic shift leading to increased dependency ratios presents a major resource challenge. Though developed countries have been able to age gradually, they face challenges resulting from the relationship between ageing and unemployment and sustainability of pension systems, while developing countries face the challenge of simultaneous development and population ageing (UN/DESA: 2002).

While today the overwhelming proportion of older persons in developed countries live in areas classified as urban, the majority of older persons in developing countries live in rural areas. Demographic projections suggest that, by 2025, 82 percent of the population of developed countries will live in urban areas, while less than half of the population of developing countries will live there. In developing countries, the proportion of older persons in rural areas is higher than in urban areas. Although further

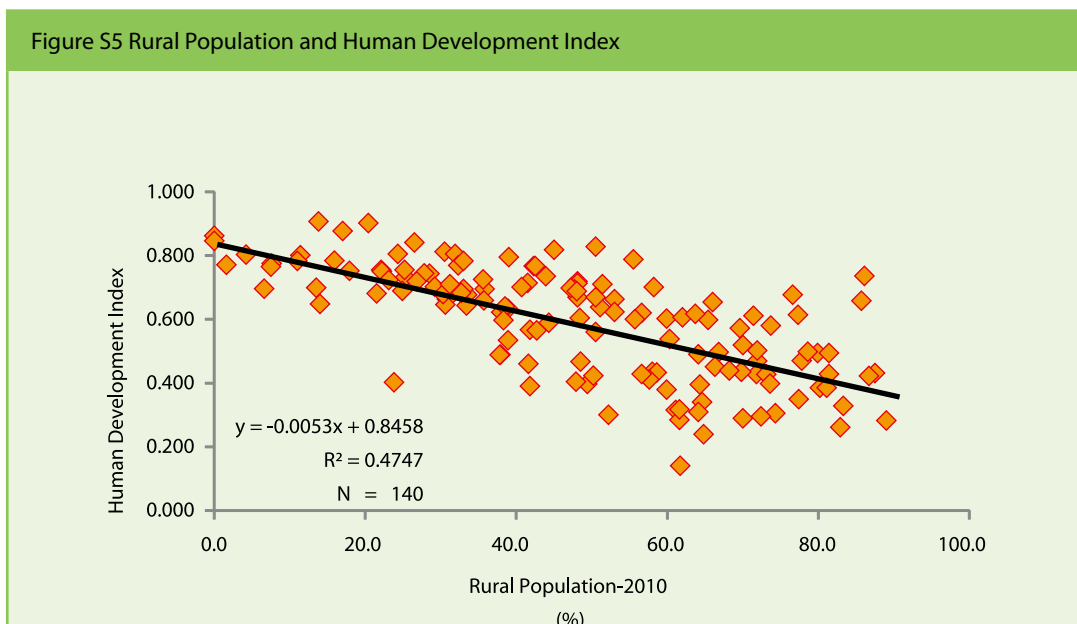
study is needed on the relationship between ageing and urbanisation, the trends suggest that in the future in rural areas of many developing countries there will be a larger population of older persons (UN/DESA: 2002).

Significant differences also exist between developed and developing countries in terms of the kinds of households in which older persons live. In developing countries a large proportion of older persons live in multigenerational households. These differences imply that policy actions will be different in developing and developed countries.

2.2 Rural Poverty and Deprivation

The Human Development Index (HDI) decreases with every increase in rural population in developing countries (Figure S5). However, it is difficult to demonstrate precisely the magnitude of rural poverty in term of HDI as it contains several indicators and gives the measurement of development in relation to those indicators.

The IFAD Rural Poverty Report 2011 states that today a little less than 35 percent of the total rural population of developing countries is classified as extremely poor, down from around 54 percent in 1988; while the corresponding percentage for the US\$ 2/day poverty line is now just



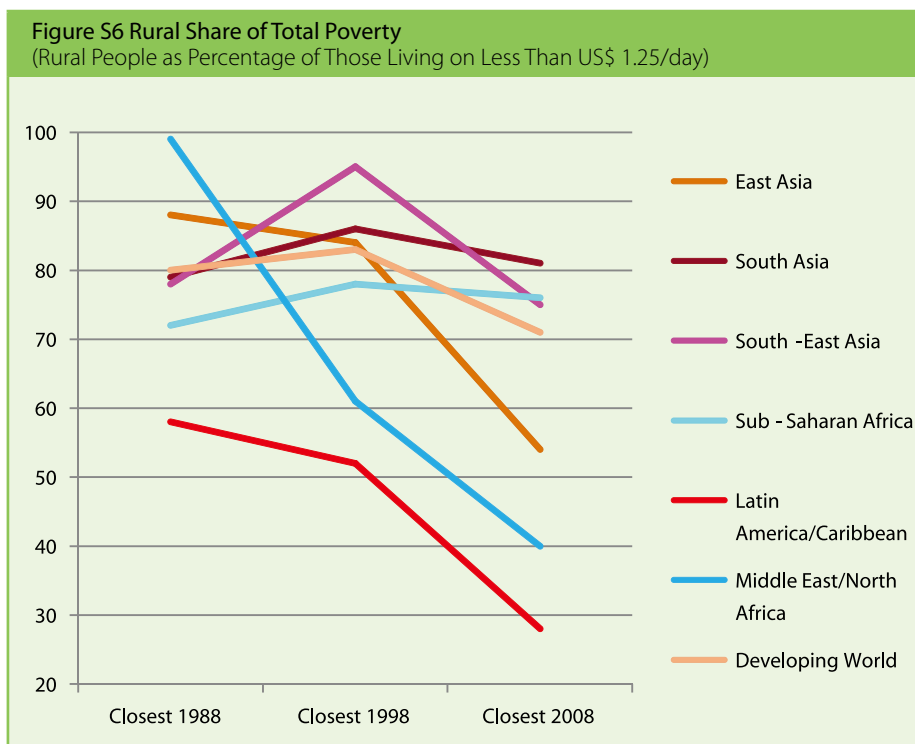
Source: Trend line based on data from Human Development Report, 2011.

above 60 percent, down from over 80 percent in 1988 (see Figures S6, S7 and S8.). This is mainly due to a massive reduction in rural poverty in East Asia, where today the incidence of rural poverty is around 15 percent for the US\$ 1.25/day line and 35 percent for the US\$ 2/day line (IFAD Rural Poverty Report 2011).

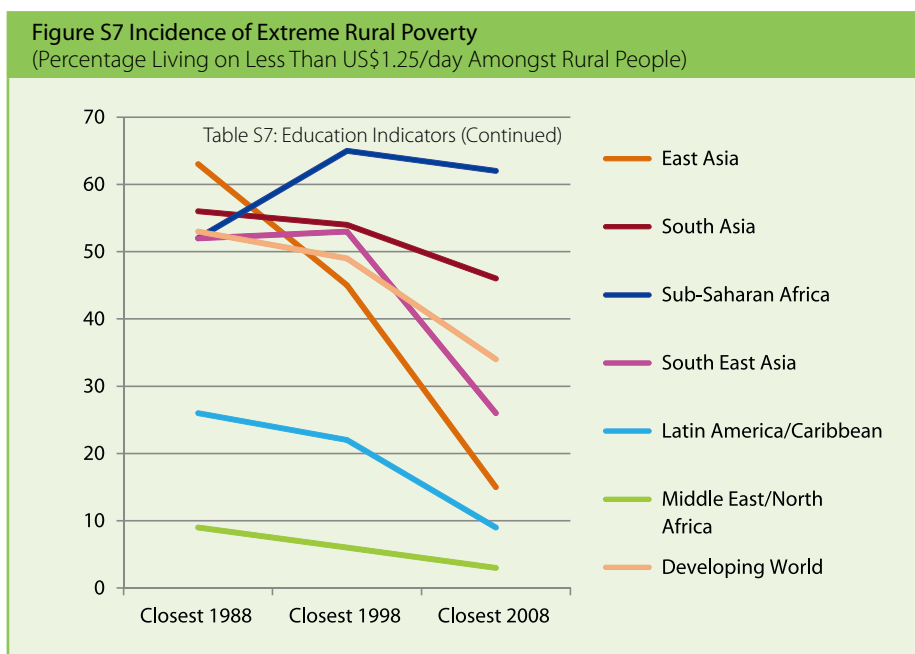
Rural poverty has declined more slowly in South Asia, where the incidence is still more than 45 percent for extreme poverty and over 80 percent for US\$ 2/day and in Sub-Saharan Africa, where more than 60 percent of the rural population lives on less than US\$ 1.25 a day, and almost 90 percent lives on less than US\$ 2/day. In Latin America and the Caribbean, and the Middle East and North Africa the incidence of extreme rural poverty is less than 10 and 5 percent respectively, with declines occurring in both regions over the past decade (even though one-fifth of the rural population in Latin America and the Caribbean, and one in eight in the Middle East and North Africa, live on less than US\$ 2/day). Within each region, some countries and sub-regions performed better than others over the past two decades. In Sub-Saharan Africa, for instance, rural poverty declined in much of East and West Africa but increased in Middle Africa; in North Africa rural poverty declined, while it increased in the conflict-affected Middle East (IFAD: 2011, pp.47-48).

Despite massive progress in reducing poverty in some parts of the world over the past couple of decades – notably in East Asia – there are still about 1.4 billion people

living on less than US\$ 1.25 a day, and close to 1 billion people suffering from hunger. At least 70 percent of the world’s very poor people are rural, and a large proportion of the poor and hungry are children and young people



Source: Rural Poverty Report, 2011.



Source : Rural Poverty Report, 2011.

Annex III

Measurement of Skills for People in Rural Transformation

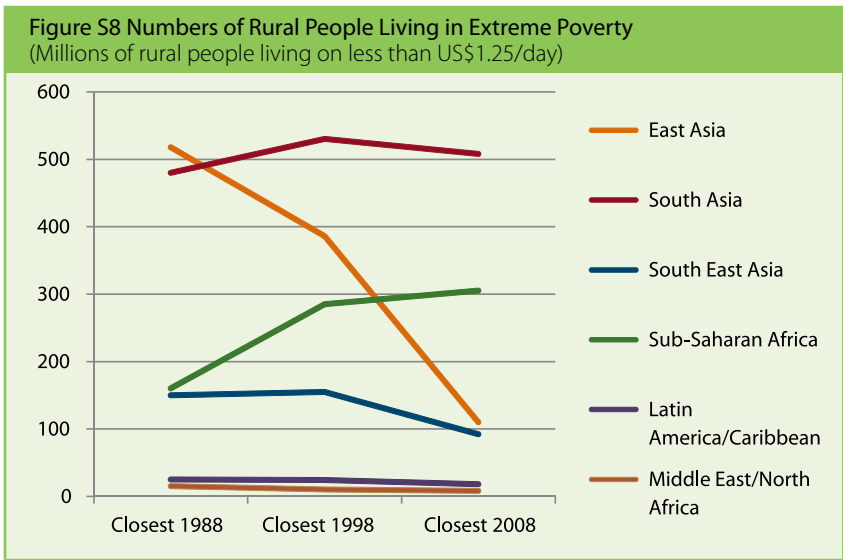
(IFAD: 2011). Neither of these facts is likely to change in the immediate future, despite widespread urbanisation and demographic changes in all regions. South and West Asia, with the greatest number of poor rural people, and Sub-Saharan Africa, with the highest incidence of rural poverty, are the regions worst affected by poverty and hunger. Levels of poverty vary considerably however, not just across regions and countries, but also within countries.

As noted, nearly one-sixth of the world total population is living in abject poverty and suffering from hunger and illiteracy – majority of them finding their abode in the Sub-Saharan African and the Asia/Pacific regions. Within the Millennium Development Goals (MDGs) framework, education and training policies play a crucial role in reducing poverty and ensuring an equitable distribution of economic resources. The UNESCO Education for All Global Monitoring Report 2011 estimates worldwide some 72 million children of primary school age are still out-of-school (Figure S9) and over four out of five of them live in rural areas.

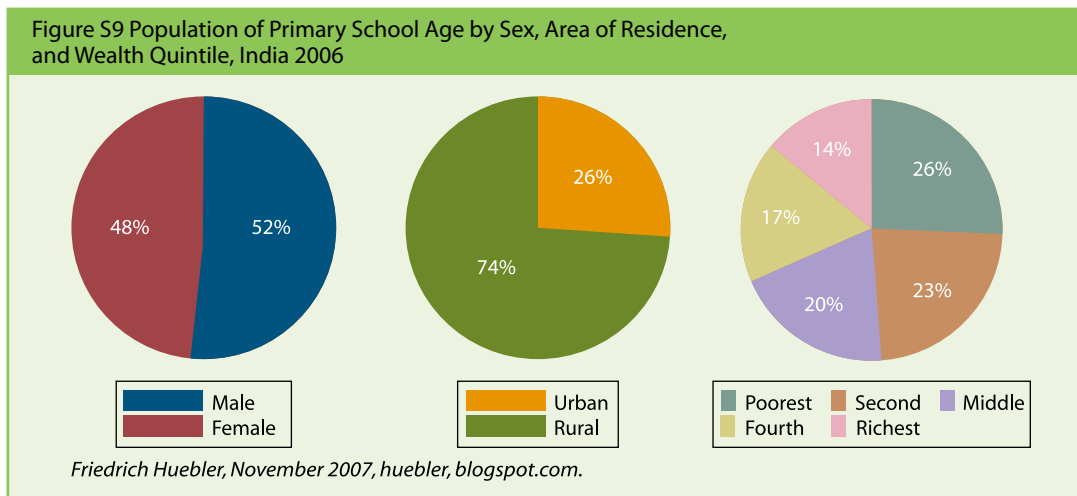
A comparison of the composition of the total population of primary school age and the population of children out of school in India, for instance, shows which group of children are disproportionately more likely to miss out on education. Figure S9 shows the composition of the Indian

population aged 6 to 10 years. Fifty-two percent of all children in this age group are boys and 48 percent are girls. About one-quarter of all children of primary school age live in urban areas and the remaining three-quarters in rural areas (Hueber:2007).

Wealth quintiles are constructed by ranking the entire population of India, regardless of age, according to household wealth and dividing them into five equally sized groups with 20 percent each of the total population. As Figure S10 shows, households from poorer quintiles are more likely to have more children than households from



Source: Rural Poverty Report, 2011.



Source: India Demographic and Health Survey 2005-2006.

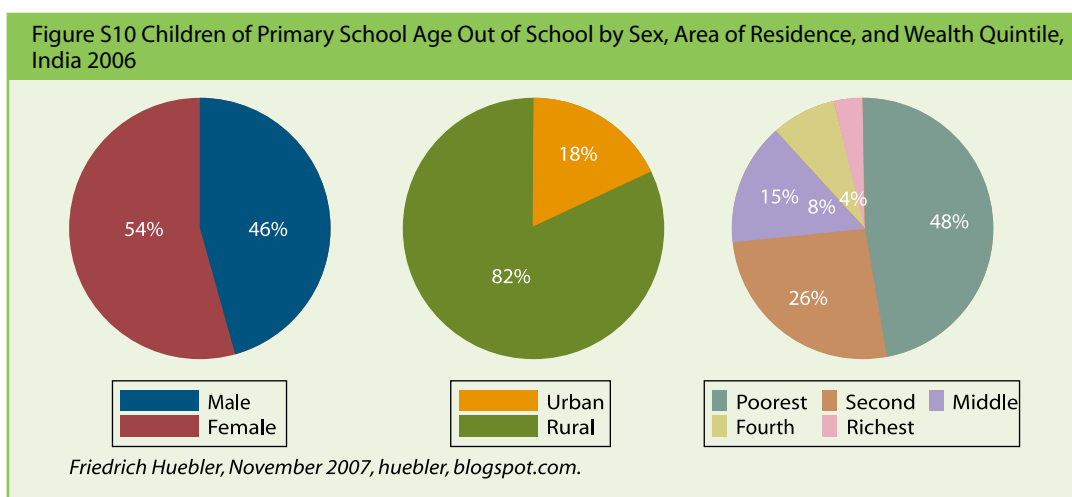
richer quintiles. Overall, 26 percent of all children between 6 and 10 years live in the bottom quintile and a further 23 percent in the second quintile.

Figure S10 shows the composition of the group of children aged 6 to 10 years that are out of school in India. Although girls only account for 48 percent of the total number of children in this age group, they make up 54 percent of the children out of school. Rural children are disproportionately more likely to be out of school than urban children. Most strikingly, children from the poorest quintile make up almost half of all children out of school. Forty-eight percent – 10 million of the 21 million children out of school – live in

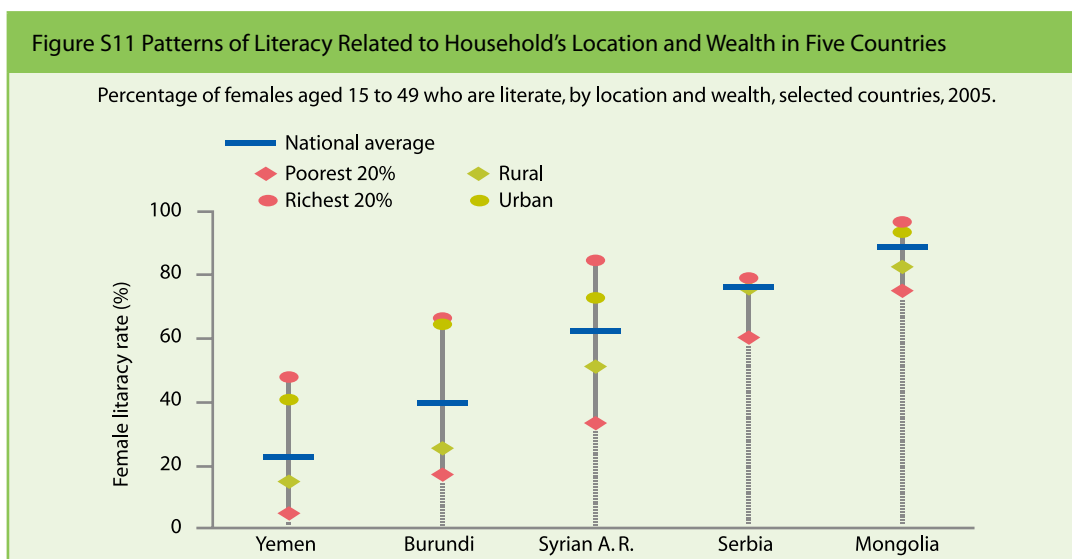
the poorest quintile. Seventy-four percent of all children out of school live in the two poorest quintiles.

These numbers emphasize the close link between poverty and school attendance in India. School attendance rates have increased among the poorest households between 2000 and 2006 but the increase was not large enough to keep pace with population growth. Unless India places more emphasis on school attendance among the poor, the country will miss the Millennium Development Goal of universal primary education by 2015.

(To be continued on page No. 268)



Source: India Demographic and Health Survey 2005-06.



Note: The female literacy rate indicates woman aged 15 to 49 able to read all or part of a simple sentence.
Source: UNESCO et al. (2010).

Table S2 Percentage Point Change in Rural Population in Selected Developing Countries (1999-2010)

Arab States	Central Asia	Central & Eastern Europe	East Asia & Pacific	Latin America & the Caribbean	South and West Asia	Sub-Saharan Africa
Yemen	-7.3	Turkmenistan -4.8	Malaysia -15.5	Panama -18.8	Bhutan -27.8	São Tomé & Príncipe -40.7
Algeria	-7.0	Kazakhstan -2.1	China -15.4	El Salvador -18.0	Maldives -14.0	Gambia -26.4
Sudan	-5.0	Kyrgyzstan -1.0	Thailand -12.8	Haiti -17.0	Iran -9.7	Angola -25.0
Jordan	-4.9	Uzbekistan 0.9	Vietnam -10.7	Costa Rica -16.8	Nepal -7.0	Ghana -13.6
Qatar	-3.5	Mongolia 1.0	Lao P.D.R. -10.3	Guatemala -10.1	Bangladesh -4.2	Rwanda -12.8
Morocco	-2.9	Tajikistan 1.2	Myanmar -6.4	Venezuela -6.8	India -1.9	South Africa -11.6
Tunisia	-2.5	Azerbaijan 5.0	Cambodia -4.5	Paraguay -6.2	Pakistan 0.6	Botswana -11.4
Syria	-1.7	Armenia 5.5	Indonesia -4.5	Brazil -5.8	Sri Lanka 9.0	Togo -10.7
Kuwait	-1.0	Georgia 7.4	Brunei -4.0	Dominican R. -4.8		Cameroon -10.4
Egypt	1.6		Slovenia -3.3	Bolivia -4.7		Burkina Faso -7.8
Lebanon	2.1		Fiji -1.9	Peru -4.5		Namibia -7.6
Saudi Arabia	3.0		Korea, R. -1.9	Mexico -3.6		Guinea-Bissau -6.7
Bahrain	3.2			Chile -3.6		Nigeria -6.7
UAE	5.9			Argentina -2.8		Mali -6.5
Djibouti	6.8			Ecuador -2.7		Gabon -5.7
Oman	9.2			Colombia -1.6		Congo, D.R. -5.2
Libya	9.3			Nicaragua -1.5		Cote d'Ivoire -4.9
Mauritania	15.0			Uruguay -1.5		Chad -4.1
				Belize 1.3		Zimbabwe -3.7
				Jamaica 3.6		Guinea -3.4
				Bahamas 3.8		Eritrea -3.2
				Suriname 4.1		Sierra Leone -2.5
				Barbados 5.0		Burundi -2.3
				Guyana 9.0		Madagascar -1.2
				Trinidad/Tobago 59.7		Cape Verde -0.7
						Mauritius -0.7
						Benin -0.5
						Congo -0.4
						Lesotho 0.2
						Ethiopia 0.5
						Mozambique 0.5
						Uganda 0.5
						Central African Republic 1.9
						Niger 3.0
						Malawi 3.7
						Zambia 3.8
						Senegal 4.3
						Comoros 4.5
						Swaziland 4.7
						Tanzania 5.2
						Equatorial Guinea 7.2
						Kenya 9.9

(In Continuation to page No. 267)

Literacy programmes are often organized as single interventions to impart literacy and numeracy skills only and participation in these are related to the economic status of the families and where they reside, as shown in Figure S11.

Table S2 shows the trend in the shift of the proportions of rural and urban populations in selected countries from 7 developing regions between 1999 and 2010. There has been a continuing decline in the proportion of the rural population in all regions, but in a small number of countries in six regions (the exception is East Asia and Pacific), there has been an increase in the proportion of rural population. The causes for this counter-trend appear to be related to specific circumstances including conflicts and natural calamities which have forced people to move as well as economic difficulties that may have led migrant workers to return to rural homes.

Table S3 Rural Population and Selected Development Indicators																
S. No.	Country/Region	Rural Population (%)		Total Population (in millions)		Human Development Index (HDI)	Gross National Income (GNI) Per Capita (US \$)	Life Expectancy at Birth (in Years)	Infant Mortality Rate	Adult Literacy Rate (15 Years and Over) (%)		Net Enrolment Primary Level Education		GFR Combined (Pri+Sec+Ter) Total	Population without Access to Services (%)	
		1999	2010	1999	2010					Total	Female	Boys	Girls		Water	Sanitation
1	Afghanistan	..	77	22	31	0.300	1,419	45	165	52	63
2	Albania	59	48	3	3	0.700	7,976	77	13	99	99	3	2
3	Algeria	41	34	30	36	0.700	8,320	73	36	73	64	96	94	...	17	5
4	Andorra	..	12	-	-	0.800	38,056	81	3	81	79	67	-	-
5	Angola	67	42	14	19	0.400	4,941	48	130	70	57	50	43
6	Antigua & Barbuda	..	70	-	-	..	17,924	..	11	99	99	90	86	...	30	6
7	Argentina	10	8	37	40	0.800	14,603	76	15	98	98	92
8	Armenia	30	36	3	3	0.700	5,495	74	21	100	99	83	86	74	3	10
9	Australia	15	11	19	22	0.900	38,692	82	5	96	97	115	4	10
10	Austria	35	32	8	8	0.900	37,056	80	3	90	-	-
11	Azerbaijan	43	48	8	9	0.700	8,747	71	32	100	99	97	95	70	-	-
12	Bahamas	12	16	-	-	0.800	25,201	74	9	90	92	...	20	55
13	Bahrain	8	11	1	1	0.800	26,664	76	10	91	89	98	97	-
14	Bangladesh	76	72	127	149	0.500	1,587	67	43	55	50	85	86
15	Barbados	51	56	-	-	0.800	21,673	78	10	20	47
16	Belarus	29	25	10	10	0.700	12,926	70	11	100	100	93	96	...	-	-
17	Belgium	3	3	10	11	0.900	34,873	80	4	98	99	94	-	7
18	Belize	46	48	-	-	0.700	5,693	77	17	98	98	...	-	-
19	Benin	59	58	6	9	0.400	1,499	62	76	41	28	99	86	...	1	10
20	Bhutan	93	65	1	1	..	5,607	67	54	53	39	86	88	61	46	76
21	Bolivia	38	33	8	10	0.600	4,357	66	46	91	86	93	94	...	25	88
22	Bosnia & Herzegovina	..	51	4	4	0.700	8,222	76	13	98	96	8	35
23	Botswana	50	39	2	2	0.600	13,204	56	26	83	84	86	88	...	14	75
24	Brazil	19	14	172	195	0.700	10,607	73	18	90	90	95	93	87	1	5
25	Brunei Darussalam	28	24	-	-	0.800	49,915	77	6	95	93	93	93	78	5	40
26	Bulgaria	31	29	8	8	0.700	11,139	74	9	98	98	96	96	78	3	20
27	Burkina Faso	82	74	12	17	0.300	1,215	54	92	29	22	67	59	37
28	Burundi	91	89	6	8	0.300	402	51	102	66	60	100	99	55	-	-
29	Cambodia	84	80	12	14	0.500	1,868	62	69	78	71	90	87	...	24	89
30	Cameroon	52	42	15	20	0.500	2,197	52	82	76	68	94	82	57	28	54
31	Canada	23	19	30	34	0.900	38,668	81	6	39	71
32	Cape Verde	40	39	-	1	0.500	3,306	72	24	84	79	85	84	...	26	53
33	Central African Republic	59	61	4	4	0.300	758	48	115	55	41	77	57	38	-	-
34	Chad	77	72	8	11	0.300	1,067	49	124	33	22	43	16	46
35	Chile	15	11	15	17	0.800	13,561	79	7	99	99	95	94	85	33	66

Table S3 (continued)

S. No.	Country/Region	Rural Population (%)		Total Population (in millions)		Human Development Index (HDI)	Gross National Income (GNI) Per Capita (US \$)	Life Expectancy at Birth (in Years)	Infant Mortality Rate	Adult Literacy Rate (15 Years and Over) (%)		Net Enrolment Primary Level Education		GER Combined (Pri+Sec+Ter) Total	Population without Access to Services (%)	
		1999	2010	1999	2010					Total	Female	Boys	Girls		2008	Water
36	China	68	53	1,260	1,341	0.700	7,258	74	18	94	91	68	50	91
37	Colombia	27	25	39	46	0.700	8,589	73	16	93	93	90	90	83	4	4
38	Comoros	67	72	1	1	0.400	1,176	66	75	74	68	11	45
39	Congo	38	38	3	4	0.500	3,258	54	80	62	56	...	8	26
40	Congo, D.R.	70	65	48	66	0.200	291	48	126	67	51	5	64
41	Costa Rica	52	36	4	5	0.700	10,870	79	10	96	96	29	70
42	Cote d'Ivoire	54	49	16	20	0.400	1,625	58	5	55	44	54	77
43	Croatia	43	42	5	4	0.800	16,389	77	4	99	98	91	90	80	3	5
44	Cuba	..	25	11	11	79	5	100	100	99	99	104	2	4
45	Cyprus	44	30	1	1	0.800	21,962	80	3	98	97	99	98	81	20	77
46	Czech Rep.	25	27	10	11	0.800	22,678	77	81	88	91	86	1	1
47	Denmark	15	13	5	6	0.900	36,404	79	4	95	96	101	6	9
48	Djibouti	17	24	1	1	0.400	2,471	56	76	44	39	...	-	-
49	Dominica	..	33	-	-	..	8,549	..	9	69	76	74	-	11
50	Dominican Republic	36	31	9	10	0.700	8,273	73	27	88	88	80	80	...	-	2
51	Ecuador	36	33	12	15	0.700	7,931	75	21	84	82	96	97	82	-	-
52	Egypt	55	57	67	81	0.600	5,889	71	20	66	58	95	92	...	8	44
53	El Salvador	54	36	6	6	0.700	6,498	72	16	84	81	93	95	73
54	Equatorial Guinea	53	60	1	1	0.500	22,218	51	90	93	89	14	17
55	Eritrea	82	78	4	5	..	643	60	41	65	55	42	36	...	31	50
56	Estonia	31	31	1	1	0.800	17,168	74	4	100	100	95	94	89	6	8
57	Ethiopia	83	83	64	83	0.300	992	56	69	36	23	81	75	55	1	6
58	Fiji	51	48	1	1	0.700	4,315	69	16	90	89	...	13	13
59	Finland	33	15	5	5	0.900	33,872	80	3	96	96	101
60	France	25	15	59	63	0.900	34,341	82	3	98	99	95	39	86
61	Gabon	20	14	1	2	0.600	12,747	61	57	87	83	2	5
62	Gambia	68	42	1	2	0.400	1,358	57	80	45	34	67	71	57	62	88
63	Georgia	40	47	5	4	0.700	4,902	72	26	100	100	100	98	75
64	Germany	13	26	82	82	0.900	35,308	80	4	98	98	...	-	-
65	Ghana	62	49	19	24	0.500	1,385	57	51	66	59	76	77	...	-	-
66	Greece	40	39	11	11	0.900	27,580	80	3	97	96	99	100	...	13	67
67	Grenada	..	61	-	-	..	7,998	76	13	94	93	...	40	88
68	Guatemala	61	51	11	14	0.600	4,694	71	29	74	69	97	94	...	8	33
69	Guinea	68	65	8	10	0.300	953	59	90	38	26	76	66	51	2	5
70	Guinea-Bissau	77	70	1	2	0.300	538	49	117	51	37	-	-

Table S3 (continued)

S. No.	Country/Region	Rural Population (%)		Total Population (in millions)		Human Development Index (HDI)	Gross National Income (GNI) Per Capita (US \$)	Life Expectancy at Birth (in Years)	Infant Mortality Rate	Adult Literacy Rate (15 Years and Over) (%)		Net Enrolment Primary Level Education		GER Combined (Pri+Sec+Ter) Total	Population without Access to Services (%)	
		1999	2010	1999	2010					Total	Female	Boys	Girls		Water	Sanitation
71	Guyana	62	71	1	1	0.600	3,302	68	47	95	95	81	18	87
72	Haiti	65	48	9	10	0.400	949	62	54	-	2
73	Honduras	48	48	6	8	0.600	3,750	73	26	84	83	96	98	72	..	3
74	Hong Kong (China)	-	-	7	7	0.900	45,090	83	83	6	19
75	Hungary	36	32	10	10	0.800	17,472	74	5	90	89	90	29	81
76	Iceland	8	7	-	-	0.900	22,917	82	2	97	98	97	39	79
77	India	72	70	1,036	1,225	0.500	3,337	64	52	63	51	91	88	...	6	19
78	Indonesia	60	56	211	240	0.600	3,957	72	31	92	89	97	94	75	37	83
79	Iran, I.R.	39	29	64	74	0.700	11,764	72	27	82	77	69	14	29
80	Iraq	..	34	23	32	69	36	78	69	-	4
81	Ireland	41	38	4	5	0.900	33,078	80	3	96	98	100
82	Israel	9	8	6	7	0.900	27,831	81	4	97	98	90	-	-
83	Italy	33	32	57	61	0.900	29,619	81	3	99	99	99	98	92	-	-
84	Jamaica	44	48	3	3	0.700	7,207	72	26	86	91	82	79	87	12	69
85	Japan	21	33	126	127	0.900	34,692	83	3	88	20	48
86	Jordan	26	22	5	6	0.700	5,956	73	17	92	89	89	90	78
87	Kazakhstan	44	42	15	16	0.700	10,234	65	27	100	100	91	90	91	21	27
88	Kenya	68	78	31	41	0.500	1,628	56	81	87	83	81	82	...	-	1
89	Kiribati	..	56	-	-	..	3,715	..	38	73	6	8
90	Korea, D.P.R.	..	40	23	24	68	42	100	100	6	15
91	Korea, Rep.	19	17	46	48	0.900	29,518	80	5	100	98	100	-	-
92	Kuwait	3	2	2	3	0.800	55,719	78	9	94	93	89	87	...	-	..
93	Kyrgyzstan	66	65	5	5	0.600	2,291	68	33	99	99	84	83	77	6	17
94	Lao P.D.R.	77	67	5	6	0.500	2,321	66	48	73	63	84	81	59	-	-
95	Latvia	31	32	2	2	0.800	12,944	73	8	100	100	88	4	2
96	Lebanon	11	13	4	4	..	13,475	72	12	90	86	91	89	80	1	10
97	Lesotho	73	73	2	2	0.400	2,021	46	63	90	95	71	74	...	5	3
98	Liberia	..	52	3	4	0.300	320	59	100	58	53	41	69
99	Libyan A.J.	13	22	5	6	0.800	17,068	75	15	88	81
100	Liechtenstein	..	86	-	-	0.900	81,011	80	2	72	-	..
101	Lithuania	32	33	4	3	0.800	14,824	72	6	100	100	93	91	92	2	-
102	Luxembourg	9	15	-	1	0.900	51,109	80	2	95	97	...	1	-
103	Macedonia	38	41	2	2	0.700	9,487	75	10	97	95	86	87	72	11	74
104	Madagascar	71	70	15	21	0.400	953	61	68	71	65	98	99	66	10	7
105	Malawi	77	80	11	15	0.400	911	55	65	73	66	88	93	...	43	47

Table S3 (continued)

S. No.	Country/Region	Rural Population (%)		Total Population (in millions)		Human Development Index (HDI)	Gross National Income (GNI) Per Capita (US \$)	Life Expectancy at Birth (in Years)	Infant Mortality Rate	Adult Literacy Rate (15 Years and Over) (%)		Net Enrolment Primary Level Education		GER Com-bined (Pri+Sec+Ter) Total	Population without Access to Services (%)	
		1999	2010	1999	2010					Total	Female	Boys	Girls		Water	Sanitation
106	Malaysia	43	28	23	28	0.700	13,927	75	6	92	90	96	96	70	1	22
107	Maldives	74	60	-	-	0.600	5,408	72	24	98	98	97	95	...	-	..
108	Mali	71	64	11	15	0.300	1,171	49	103	26	18	79	66	50	15	71
109	Malta	10	5	-	-	0.800	21,004	80	6	92	94	91	92	79	32	83
110	Marshall Islands	..	28	-	-	30	67	66	2
111	Mauritania	44	59	3	4	0.400	2,118	57	75	57	50	74	79	3
112	Mauritius	59	58	1	1	0.700	13,344	72	15	88	85	93	95	76
113	Mexico	26	22	99	113	0.800	13,971	77	15	93	91	98	98	82
114	Micronesia	..	77	-	-	0.600	3,266	69	32	-	-
115	Moldova, Rep.	54	53	4	4	0.600	3,149	69	15	98	98	88	87	71	59	89
116	Monaco	..	-	-	-	3	3	16
117	Mongolia	37	38	2	3	0.600	3,619	67	34	97	98	89	88	...	20	44
118	Montenegro	..	39	1	1	0.800	12,491	75	7	-	4
119	Morocco	45	42	28	32	0.600	4,628	72	32	56	44	92	87	...	9	2
120	Mozambique	61	62	18	23	0.300	854	48	90	54	40	82	77	...	44	64
121	Myanmar	73	66	45	48	0.500	1,596	63	71	92	89	-	-
122	Namibia	70	62	2	2	0.600	6,323	62	31	88	88	87	91	...	6	27
123	Nauru	..	-	-	-	36	72	73	56	33	52
124	Nepal	88	81	24	30	0.400	1,201	68	41	58	45	51	74
125	Netherlands	11	17	16	17	0.900	40,658	80	4	99	98	98	1	9
126	New Zealand	14	14	4	4	0.900	25,438	81	5	99	100	107	6	15
127	Nicaragua	44	43	5	6	0.600	2,567	74	23	78	78	92	92
128	Niger	80	83	11	16	0.300	675	53	79	29	15	60	48	29	10	21
129	Nigeria	57	50	121	158	0.400	2,156	48	96	60	49	64	58	...	-	-
130	Norway	25	21	5	5	0.900	58,810	81	3	99	99	97	24	50
131	Oman	18	27	2	3	..	25,653	76	10	87	81	67	69	...	-	3
132	Pakistan	64	64	141	174	0.500	2,678	67	72	54	40	72	60	42	2	8
133	Palau	..	17	-	-	13	-	-
134	Palestinian O.T.	..	26	3	4	74	24	94	91	75	75	77	2	5
135	Panama	44	25	3	4	0.800	13,347	76	19	94	93	99	98	79	19	31
136	Papua New Guinea	83	88	5	7	0.400	2,227	62	53	60	56	53	83
137	Paraguay	45	39	5	7	0.600	4,585	72	24	95	93	90	90	...	29	19
138	Peru	28	23	26	29	0.700	8,424	74	22	90	85	94	95	...	8	67
139	Philippines	42	51	76	93	0.600	4,002	72	26	94	94	91	93	80
140	Poland	35	39	38	38	0.800	17,803	76	6	95	96	88	12	69

Table S3 (continued)

S. No.	Country/Region	Rural Population (%)		Total Population (in millions)		Human Development Index (HDI)	Gross National Income (GNI) Per Capita (US \$)	Life Expectancy at Birth (in Years)	Infant Mortality Rate	Adult Literacy Rate (15 Years and Over) (%)		Net Enrolment Primary Level Education		GER Combined (Pri+Sec+Ter) Total	Population without Access to Services (%)	
		1999	2010	1999	2010					Total	Female	Boys	Girls		Water	Sanitation
141	Portugal	37	39	10	11	0.800	22,105	79	3	95	93	99	98	94	-	-
142	Qatar	8	4	1	2	0.800	79,426	76	9	93	90	61	-	-
143	Romania	44	43	22	22	0.800	12,844	73	12	98	97	91	90	85	15	48
144	Russian Fed.	23	27	147	143	0.700	15,258	67	12	100	99	84	52	91
145	Rwanda	94	81	8	11	0.400	1,190	51	72	70	66	95	97	65	42	68
146	Saint Kitts & Nevis	..	68	-	0	..	14,196	..	14	76	1	-
147	Saint Lucia	..	72	0	0	..	8,652	74	13	92	91	75	-	-
148	Saint Vincent & the Grenadines	..	51	0	0	..	8,535	72	12	98	92	...	13	-
149	Samoa	..	80	0	0	..	4,126	72	22	99	99	93	93	...	17	48
150	San Marino	..	6	-	-	1
151	São Tomé & Príncipe	79	38	0	0	0.500	1,918	66	64	88	83	95	97	67	-	-
152	Saudi Arabia	15	18	20	27	0.800	24,726	73	18	86	80	85	84	81	9	11
153	Senegal	53	58	9	12	0.400	1,816	56	57	42	33	72	74	46	12	..
154	Serbia	..	44	10	10	0.700	10,449	74	6	95	95	78	10	55
155	Seychelles	..	45	0	0	..	19,128	..	11	92	92	83	6	25
156	Sierra Leone	64	62	4	6	0.300	809	48	123	40	29
157	Singapore	-	-	4	5	0.800	48,893	81	2	95	92	7	31
158	Slovakia	43	45	5	6	0.800	21,658	75	7	81	60	55
159	Slovenia	50	51	2	2	0.800	25,857	79	3	100	100	97	97	94	14	30
160	Solomon Islands	..	81	0	1	0.500	2,172	67	30	67	67	...	18	32
161	Somalia	..	63	7	9	50	119	28	15	38	48
162	South Africa	50	38	44	50	0.600	9,812	52	48	89	88	87	88	...	9	24
163	Spain	23	23	40	46	0.900	29,661	81	4	98	97	100	100	99	-	10
164	Sri Lanka	77	86	19	21	0.700	4,886	74	13	91	89	99	100	...	1	-
165	Sudan	65	60	33	44	0.400	2,051	59	70	69	60	-	-
166	Suriname	27	31	1	1	0.600	7,093	69	25	91	88	91	90	28
167	Swaziland	74	79	1	1	0.500	5,132	47	59	87	86	82	84	...	4	13
168	Sweden	17	15	9	9	0.900	36,936	81	2	95	94	92	35	46
169	Switzerland	32	26	7	8	0.900	39,849	82	4	94	94	86	1	4
170	Syrian A.R.	46	44	16	20	0.600	4,760	75	14	84	77	2	..
171	Tajikistan	73	74	6	7	0.600	2,020	67	54	100	100	99	95	72
172	Tanzania	68	74	33	45	0.400	1,344	57	67	73	66	100	99
173	Thailand	79	66	62	69	0.700	8,001	69	13	94	92	91	89	72
174	Timor-Leste	..	72	1	1	0.500	5,303	62	75	77	74
175	Togo	67	57	5	6	0.400	844	63	64	65	54	98	89	...	31	49

Table S3 (continued)

S. No.	Country/Region	Rural Population (%)		Total Population (in millions)		Human Development Index (HDI)	Gross National Income (GNI) Per Capita (US \$)	Life Expectancy at Birth (in Years)	Infant Mortality Rate	Adult Literacy Rate (15 Years and Over) (%)		Net Enrolment Primary Level Education		GER Combined (Pri+Sec+Ter) Total	Population without Access to Services (%)	
		1999	2010	1999	2010					Total	Female	Boys	Girls		Water	Sanitation
176	Tonga	..	77	-	-	0.700	4,038	72	17	99	99	1	8
177	Trinidad and Tobago	26	86	1	1	0.700	24,233	70	31	99	98	92	91
178	Tunisia	35	33	9	11	0.700	7,979	74	18	78	71	97	98	78	51	87
179	Turkey	26	30	63	73	0.700	13,359	72	20	89	81	96	94	74	-	-
180	Turkmenistan	55	51	4	5	0.700	7,052	65	43	100	99	-	-
181	Tuvalu	..	50	-	-	30	40	51
182	Uganda	86	87	24	33	0.400	1,224	54	85	75	67	96	98	66	1	-
183	Ukraine	32	31	49	45	0.700	6,535	69	14	100	100	89	89	91
184	United Arab Emirates	15	20	3	8	0.900	47,094	80	7	90	91	92	91	...	-	-
185	United Kingdom	11	16	59	62	0.800	35,087	80	5	99	100	89	9	23
186	United States of America	23	18	279	310	0.800	58,006	78	7	91	93	93	70	77
187	Uruguay	9	8	3	3	0.800	13,808	77	12	98	98	97	98	90	10	9
188	Uzbekistan	63	64	25	27	0.600	3,085	68	34	99	99	89	87	71	43	66
189	Vanuatu	..	74	-	-	..	3,908	71	27	18	56
190	Venezuela	13	7	24	29	0.700	11,846	74	16	95	95	90	90	89	7	16
191	Vietnam	80	70	78	88	0.600	2,995	75	12	93	90	31	45
192	Yemen	76	68	17	24	0.400	2,387	64	53	61	43	79	66	...	-	-
193	Zambia	61	64	10	13	0.400	1,359	47	92	71	61	95	96	...	-	-
194	Zimbabwe	65	62	12	13	0.100	176	47	62	91	89	89	91	...	11	4
195	Malawi	77	80	11	15	0.400	911	55	65	73	66	88	93	...	43	47

Table S4 Countries Ranked by Percent of Rural Population (2010) and Selected Development Indicators

S. No.	Country/Region	Rural Population Rank		Total Population (in millions)		Human Development Index (HDI)	Gross National Income (GNI) Per Capita (US \$)	Life Expectancy at Birth (in Years)	Infant Mortality Rate	Adult Literacy Rate (15 Years and Over) (%)		Net Enrolment Primary Level Education		GER Combined (Pri+Sec+Ter) Total	Population without Access to Services (%)	
		1999	2010	1999	2010					Total	Female	Boys	Girls		Water	Sanitation
1	Afghanistan	...	171	141	149	155	156	183	193	7	96
2	Albania	105	103	53	51	57	92	39	68	16	12	102	3
3	Algeria	71	71	152	154	57	86	76	129	99	103	37	52	...	52	19
4	Andorra	...	14	1	1	26	15	7	7	117	117	82
5	Angola	122	90	127	131	133	109	173	192	105	110	11	72
6	Antigua & Barbuda	...	155	1	1	...	47	...	59	16	12	86	105	...	33	25
7	Argentina	9	8	157	156	26	55	46	78	26	24	17
8	Armenia	47	73	53	51	57	105	62	97	1	12	113	105	66	102	36
9	Australia	19	11	137	137	1	13	3	29	37	30	1	98	36
10	Austria	56	61	98	93	1	16	16	7	23
11	Azerbaijan	74	103	98	99	57	80	102	123	1	12	28	44	78
12	Bahamas	14	24	1	1	26	35	62	49	86	68	...	43	92
13	Bahrain	3	11	25	23	26	31	46	54	61	61	19	30
14	Bangladesh	140	161	180	181	117	154	120	136	122	116	108	105
15	Barbados	93	123	1	1	26	43	36	54	43	79
16	Belarus	46	41	110	103	57	67	106	59	1	1	64	37
17	Belgium	1	2	110	110	1	21	16	20	19	6	13	...	27
18	Belize	87	103	1	1	57	103	39	87	19	13
19	Benin	105	128	89	99	133	155	137	168	131	131	6	105	...	114	36
20	Bhutan	159	146	25	23	...	104	120	146	127	126	105	94	87	13	113
21	Bolivia	64	65	98	103	93	116	127	138	61	72	64	52	...	39	125
22	Bosnia & Herzegovina	...	114	63	59	57	88	46	68	26	35	78	70
23	Botswana	90	81	44	41	93	65	154	107	89	77	105	94	...	57	112
24	Brazil	27	17	183	184	57	75	76	90	66	57	47	61	33	114	19
25	Brunei Darussalam	44	39	1	1	26	7	39	36	39	43	64	61	54	95	71
26	Bulgaria	48	53	98	93	57	73	62	49	26	24	37	37	54	102	54
27	Burkina Faso	151	167	123	128	155	162	160	180	136	134	134	137	102
28	Burundi	158	190	89	93	155	180	166	184	109	106	1	6	93
29	Cambodia	155	177	123	121	117	149	137	159	91	92	86	99	...	40	128
30	Cameroon	95	90	128	132	117	141	164	175	95	96	60	113	90	37	91
31	Canada	31	31	152	153	1	14	7	36	21	108
32	Cape Verde	68	81	1	23	117	127	85	102	84	88	108	109	...	38	90
33	Central African Republic	105	135	63	59	155	176	173	186	122	123	123	139	101
34	Chad	142	161	98	110	155	167	170	190	135	134	99	54	77
35	Chile	19	11	128	128	26	60	30	43	16	12	47	52	37	27	99

Table S4 (continued)

S. No.	Country/Region	Rural Population Rank		Total Population (in millions)		Human Development Index (HDI)	Gross National Income (GNI) Per Capita (US \$)	Life Expectancy at Birth (in Years)	Infant Mortality Rate	Adult Literacy Rate (15 Years and Over) (%)		Net Enrolment Primary Level Education		GER Combined (Pri+Sec+Ter) Total	Population without Access to Services (%)	
		1999	2010	1999	2010					Total	Female	Boys	Girls		Water	Sanitation
36	China	125	121	187	188	57	94	62	90	44	52	81	11	130
37	Colombia	42	41	159	161	57	82	76	83	50	43	86	80	40	98	13
38	Comoros	122	161	25	23	133	165	127	165	97	96	67	75
39	Congo	64	76	53	59	117	130	160	171	140	140	...	78	60
40	Congo, D.R.	130	146	164	169	168	182	173	191	108	95	95	97
41	Costa Rica	95	73	63	71	57	74	30	54	38	35	34	107
42	Cote d'Ivoire	99	110	132	132	133	152	149	29	122	120	5	114
43	Croatia	74	90	75	59	26	52	39	20	16	24	76	80	49	102	19
44	Cuba	...	41	117	110	30	29	1	1	6	6	3	107	13
45	Cyprus	78	55	25	23	26	42	16	7	26	32	6	13	45	43	114
46	Czech Rep.	35	48	110	110	26	39	39	173	100	73	35	114	1
47	Denmark	19	15	75	79	1	18	30	20	47	37	4	85	33
48	Djibouti	24	39	25	23	133	136	154	168	142	142
49	Dominica	...	65	1	1	...	83	...	49	133	122	66	...	41
50	Dominican Republic	59	57	105	103	57	87	76	112	73	68	120	116	3
51	Ecuador	59	65	123	123	57	93	54	97	84	82	37	30	43
52	Egypt	102	126	173	173	93	102	102	95	109	109	47	68	...	78	73
53	El Salvador	99	73	89	79	57	99	85	83	84	83	64	44	69
54	Equatorial Guinea	97	132	25	23	117	40	166	177	50	61	57	49
55	Eritrea	151	174	63	71	...	178	145	133	112	112	143	143	...	30	86
56	Estonia	48	57	25	23	26	50	62	20	1	1	47	52	27	85	29
57	Ethiopia	153	183	171	175	155	168	154	159	134	133	117	123	93	114	25
58	Fiji	93	103	25	23	57	117	108	83	86	88	...	61	43
59	Finland	54	20	75	71	1	24	16	7	37	37	4
60	France	35	20	167	168	1	23	3	7	19	6	12	21	122
61	Gabon	29	17	25	41	93	69	143	149	78	78	107	19
62	Gambia	125	90	25	41	133	159	150	171	129	128	134	129	90	2	125
63	Georgia	68	102	75	59	57	110	85	107	1	1	1	13	63
64	Germany	15	45	176	174	1	19	16	20	19	13
65	Ghana	113	110	137	140	117	157	150	142	109	108	125	120
66	Greece	68	81	117	110	1	30	16	7	35	35	6	1	...	61	101
67	Grenada	...	135	1	1	...	90	46	68	60	61	...	19	125
68	Guatemala	110	114	117	121	93	113	102	116	97	94	28	52	...	78	69
69	Guinea	125	146	98	103	155	169	146	177	133	132	125	132	95	107	19
70	Guinea-Bissau	142	155	25	41	155	179	170	187	128	127

Table S4 (continued)

S. No.	Country/Region	Rural Population Rank		Total Population (in millions)		Human Development Index (HDI)	Gross National Income (GNI) Per Capita (US \$)	Life Expectancy at Birth (in Years)	Infant Mortality Rate	Adult Literacy Rate (15 Years and Over) (%)		Net Enrolment Primary Level Education		GER Combined (Pri+Sec+Ter) Total	Population without Access to Services (%)	
		1999	2010	1999	2010					2010	2008	2008	2005-2008		Boys	Girls
71	Guyana	113	160	25	23	93	128	115	139	47	44	45	49	123
72	Haiti	118	103	105	103	133	171	137	146	3
73	Honduras	89	103	89	93	93	123	76	107	84	78	37	13	71	...	9
74	Hong Kong (China)	95	88	1	10	1	40	85	51
75	Hungary	59	61	110	103	26	49	62	29	86	88	23	34	118
76	Iceland	3	6	1	1	1	38	3	2	28	13	10	21	117
77	India	134	155	186	187	117	126	133	143	114	115	76	94	...	85	51
78	Indonesia	109	123	184	185	93	121	85	120	55	61	28	52	63	25	119
79	Iran, I.R.	67	53	171	172	57	72	85	112	90	90	80	57	64
80	Iraq	...	71	143	150	108	129	91	94	13
81	Ireland	71	76	63	71	1	25	16	7	37	13	6
82	Israel	6	8	89	88	1	29	7	20	28	13	23
83	Italy	54	61	166	166	1	27	7	7	16	12	6	13	17
84	Jamaica	78	103	53	51	57	95	85	107	82	52	114	117	33	64	104
85	Japan	30	65	179	179	1	22	1	7	30	43	81
86	Jordan	38	34	75	79	57	101	76	87	55	61	94	80	54
87	Kazakhstan	78	90	128	126	57	77	131	112	1	1	76	80	21	42	61
88	Kenya	125	174	154	157	117	151	154	173	78	78	117	113	1
89	Kiribati	...	123	1	1	...	124	...	132	69	85	29
90	Korea, D.P.R.	...	88	143	140	115	135	1	1	85	45
91	Korea, Rep.	27	26	163	163	1	28	16	29	1	13	6
92	Kuwait	1	1	44	51	26	5	36	49	44	43	94	99
93	Kyrgyzstan	121	146	75	71	93	139	115	126	16	12	111	112	59	85	49
94	Lao P.D.R.	142	152	75	79	117	138	127	140	99	104	111	115	89
95	Latvia	48	61	44	41	26	66	76	48	1	1	30	98	3
96	Lebanon	11	15	63	59	...	61	85	62	66	72	76	88	49	114	36
97	Lesotho	135	166	44	41	133	146	182	153	66	38	132	125	...	95	9
98	Liberia	...	120	53	59	155	181	146	183	118	114	18	104
99	Libyan A.J.	15	34	75	79	26	51	54	78	73	83
100	Liechtenstein	...	185	1	1	16	2	71
101	Lithuania	51	65	63	51	26	54	85	36	1	1	64	73	17	107	...
102	Luxembourg	6	20	1	23	1	6	16	2	47	30	...	114	...
103	Macedonia	64	89	44	41	57	79	54	54	35	38	105	99	71	67	110
104	Madagascar	132	155	128	135	133	169	143	158	103	102	19	6	84	70	27
105	Malawi	142	177	117	123	133	172	159	156	99	99	100	61	...	15	79

Table S4 (continued)

S. No.	Country/Region	Rural Population Rank		Total Population (in millions)		Human Development Index (HDI)	Gross National Income (GNI) Per Capita (US \$)	Life Expectancy at Birth (in Years)	Infant Mortality Rate	Adult Literacy Rate (15 Years and Over) (%)		Net Enrolment Primary Level Education		GER Combined (Pri+Sec+Ter) Total	Population without Access to Services (%)	
		1999	2010	1999	2010					Total	Female	Boys	Girls		Water	Sanitation
106	Malaysia	74	51	143	145	57	58	54	36	55	57	37	37	78	114	56
107	Maldives	138	132	1	1	93	106	85	102	26	24	28	44
108	Mali	132	142	117	123	155	166	170	185	139	136	121	132	97	55	108
109	Malta	9	4	1	1	26	45	16	36	55	41	76	68	52	29	119
110	Marshall Islands	...	51	1	1	117	134	132	3
111	Mauritania	78	131	53	59	133	144	150	165	120	116	128	117	9
112	Mauritius	105	128	25	23	57	64	85	78	73	75	64	44	61
113	Mexico	38	34	177	178	26	57	39	78	50	52	19	13	43
114	Micronesia	...	171	1	1	93	129	108	123
115	Moldova, Rep.	99	121	63	59	93	131	108	78	26	24	100	99	76	4	128
116	Monaco	7	102	47
117	Mongolia	62	76	44	51	93	125	120	127	35	24	94	94	...	43	73
118	Montenegro	...	81	25	23	26	70	54	43	13
119	Morocco	85	90	151	150	93	114	85	123	121	120	71	99	...	74	3
120	Mozambique	110	137	136	139	155	173	173	177	125	124	114	120	...	14	97
121	Myanmar	135	150	162	163	117	153	135	162	55	61
122	Namibia	130	137	44	41	93	100	137	120	73	68	103	73	...	85	61
123	Nauru	129	129	128	92	27	89
124	Nepal	157	180	146	148	133	163	115	133	118	119	9	110
125	Netherlands	11	26	132	128	1	11	16	20	6	13	9	114	33
126	New Zealand	18	17	63	59	1	34	7	29	6	1	2	85	45
127	Nicaragua	78	96	75	79	93	135	62	101	91	89	71	68
128	Niger	149	183	117	126	155	177	163	170	136	137	141	141	103	70	55
129	Nigeria	104	112	178	182	133	143	173	182	116	118	139	138
130	Norway	35	33	75	71	1	3	7	7	6	6	10	40	86
131	Oman	26	48	44	51	...	33	46	54	78	83	134	130	9
132	Pakistan	116	142	181	183	117	134	120	163	125	124	129	136	100	107	29
133	Palau	...	26	68
134	Palestinian O.T.	...	45	53	59	62	102	44	52	127	123	59	107	19
135	Panama	78	41	53	59	26	63	46	94	44	43	6	13	52	48	66
136	Papua New Guinea	153	189	75	88	133	140	137	144	116	111	6	119
137	Paraguay	85	81	75	88	93	115	85	102	39	43	86	80	...	34	51
138	Peru	44	37	150	146	57	85	62	99	66	75	60	44	...	78	101
139	Philippines	73	114	174	177	93	120	85	107	44	41	76	61
140	Poland	56	81	158	155	26	48	46	36	47	37	30	64	104

Table S4 (continued)

S. No.	Country/Region	Rural Population Rank		Total Population (in millions)		Human Development Index (HDI)	Gross National Income (GNI) Per Capita (US \$)	Life Expectancy at Birth (in Years)	Infant Mortality Rate	Adult Literacy Rate (15 Years and Over) (%)		Net Enrolment Primary Level Education		GER Combined (Pri+Sec+Ter) Total	Population without Access to Services (%)	
		1999	2010	1999	2010					Total	Female	Boys	Girls		Water	Sanitation
141	Portugal	62	81	110	110	26	41	30	7	39	43	6	13	13
142	Qatar	3	3	25	41	26	2	46	49	50	57	87
143	Romania	78	96	141	137	26	68	76	62	26	32	76	80	37	55	81
144	Russian Fed.	31	48	182	180	57	53	120	62	1	12	39	7	130
145	Rwanda	160	180	98	110	133	164	166	163	105	99	47	30	86	17	103
146	Saint Kitts & Nevis	...	153	...	1	...	56	...	75	61	114	...
147	Saint Lucia	...	161	1	1	...	81	62	68	71	73	63
148	Saint Vincent & the Grenadines	...	114	1	1	...	84	85	62	19	68	...	61	...
149	Samoa	...	177	1	1	...	118	85	99	16	12	64	61	...	52	81
150	San Marino	...	5	1
151	São Tomé & Príncipe	147	76	1	1	117	148	127	154	73	78	47	30	82
152	Saudi Arabia	19	29	140	143	26	36	76	90	82	87	108	109	45	74	41
153	Senegal	97	128	105	118	133	150	154	149	130	129	129	125	98	64	...
154	Serbia	...	98	110	103	57	76	62	36	47	44	54	70	92
155	Seychelles	...	100	1	1	...	46	...	59	55	49	40	85	59
156	Sierra Leone	116	137	63	79	155	175	173	189	132	130
157	Singapore	63	71	26	8	7	2	39	49	83	66
158	Slovakia	74	100	75	79	26	44	54	43	45	3	92
159	Slovenia	90	114	44	41	26	32	30	7	1	1	28	30	13	57	65
160	Solomon Islands	...	180	1	23	117	142	120	117	134	131	...	49	68
161	Somalia	...	141	95	99	169	188	138	137	24	81
162	South Africa	90	76	161	165	93	78	164	140	71	68	103	94	...	74	58
163	Spain	31	37	160	161	1	26	7	20	26	32	1	1	8	...	36
164	Sri Lanka	142	185	137	135	57	111	62	68	61	61	6	1	...	114	...
165	Sudan	118	132	155	158	133	145	146	161	107	106
166	Suriname	42	57	25	23	93	96	108	106	61	68	76	80	63
167	Swaziland	138	176	25	23	117	108	179	151	78	72	114	109	...	98	43
168	Sweden	24	20	105	99	1	17	7	2	47	52	17	26	77
169	Switzerland	51	45	95	93	1	12	3	20	60	52	35	114	13
170	Syrian A.R.	87	98	132	132	93	112	54	75	84	90	107	...
171	Tajikistan	135	167	89	88	93	147	120	146	1	1	6	44	71
172	Tanzania	125	167	155	159	133	160	150	157	99	99	1	6
173	Thailand	147	150	169	170	57	89	108	68	44	49	76	88	71
174	Timor-Leste	...	161	25	23	117	107	137	165	123	125
175	Togo	122	126	75	79	133	174	135	154	112	113	19	88	...	30	85

Table S4 (continued)

S. No.	Country/Region	Rural Population Rank		Total Population (in millions)		Human Development Index (HDI)	Gross National Income (GNI) Per Capita (US \$)	Life Expectancy at Birth (in Years)	Infant Mortality Rate	Adult Literacy Rate (15 Years and Over) (%)		Net Enrolment Primary Level Education		GER Combined (Pri+Sec+Ter) Total	Population without Access to Services (%)	
		1999	2010	1999	2010					Total	Female	2005-2008	Boys		Girls	2008
176	Tonga	...	171	1	57	119	85	87	16	12	114	29
177	Trinidad and Tobago	38	185	25	57	37	106	120	16	24	71	73
178	Tunisia	56	65	105	57	91	62	90	91	92	28	13	54	9	123	...
179	Turkey	38	55	170	57	62	85	95	71	83	37	52	66
180	Turkmenistan	102	114	63	57	97	131	136	1	12
181	Tuvalu	...	112	117	19	88
182	Uganda	156	188	146	133	161	160	176	96	98	37	13	84	114
183	Ukraine	51	57	165	57	98	108	75	1	1	94	88	21
184	United Arab Emirates	19	32	53	1	9	16	43	66	52	71	73
185	United Kingdom	11	24	167	26	20	16	29	6	1	27	74	57	...
186	United States of America	31	29	185	26	4	36	43	76	61	16	1	114	...
187	Uruguay	6	8	53	26	59	39	62	26	24	28	13	23	70	33	...
188	Uzbekistan	115	142	149	93	132	115	127	16	12	94	99	76	15	99	...
189	Vanuatu	...	167	1	...	122	102	112	49	95	...
190	Venezuela	15	6	146	57	71	62	83	39	38	86	80	27	83	47	...
191	Vietnam	149	155	175	93	133	54	62	50	57	30	75	...
192	Yemen	140	153	135	133	137	133	144	115	122	121	132
193	Zambia	110	142	110	133	158	179	180	103	105	47	37
194	Zimbabwe	118	137	123	169	183	179	152	61	61	94	73	...	67	13	...

Table S5 Demographic Indicators										
S. No.	Country/Region	Total Population (in millions)		Population Average Annual Growth Rate (%)	Rural Population (%)		Life Expectancy at Birth (in Years)	Total Fertility Rate per Woman	Infant Mortality Rate	Maternal Mortality Rate
		1999	2010	1999-2010	1999	2010	2010	1995-2000	2008	2003-2008
Arab States										
1	Algeria	30.1	35.5	1.5	40.5	33.5	72.9	3.3	36	180
2	Bahrain	0.6	1.3	6.6	8.2	11.4	76	2.6	10	32
3	Djibouti	0.7	0.9	2.0	17.0	23.8	56.1	6.1	76	650
4	Egypt	66.5	81.1	1.8	55.0	56.6	70.5	3.4	20	130
5	Iraq	23.1	31.7	2.9	..	33.8	68.5	..	36	300
6	Jordan	4.8	6.2	2.4	26.4	21.5	73.1	4.7	17	62
7	Kuwait	1.9	2.7	3.6	2.6	1.6	77.9	2.9	9	4
8	Lebanon	3.7	4.2	1.2	10.7	12.8	72.4	2.3	12	150
9	Libyan A.J.	5.1	6.4	2.0	12.8	22.1	74.5	3.8	15	97
10	Mauritania	2.6	3.5	2.8	43.6	58.6	57.3	6.0	75	820
11	Morocco	28.4	32.0	1.1	44.7	41.8	71.8	3.4	32	240
12	Oman	2.3	2.8	1.9	17.8	27.0	76.1	5.9	10	64
13	Palestinian O.T.	3.1	4.0	2.5	..	25.9	73.9	..	24	..
14	Qatar	0.6	1.8	10.8	7.7	4.2	76	3.7	9	12
15	Saudi Arabia	19.6	27.4	3.1	14.9	17.9	73.3	6.2	18	18
16	Sudan	33.4	43.6	2.5	64.9	59.9	58.9	4.9	70	450
17	Syrian A.R.	15.6	20.4	2.5	46.0	44.3	74.6	4.0	14	130
18	Tunisia	9.4	10.5	1.0	35.2	32.7	74.3	2.3	18	100
19	United Arab Emirates	2.9	7.5	9.1	14.5	20.4	79.6	3.2	7	37
20	Yemen	17.2	24.1	3.1	75.5	68.2	63.9	7.6	53	430
South West Asia										
21	Afghanistan	22.2	31.4	3.2	..	77.4	44.6	..	165	1,800
22	Bangladesh	127.2	148.7	1.4	76.1	71.9	66.9	3.8	43	570
23	Bhutan	0.6	0.7	2.5	93.1	65.3	66.8	5.5	54	440
24	India	1,036.3	1,224.6	1.5	71.9	70.0	64.4	3.3	52	450
25	Iran, I.R.	64.3	74.0	1.3	38.9	29.2	71.9	3.2	27	140
26	Maldives	0.3	0.3	1.5	73.9	59.9	72.3	5.8	24	120
27	Nepal	23.8	30.0	2.1	88.4	81.4	67.5	4.8	41	830
28	Pakistan	141.3	173.6	1.9	63.5	64.1	67.2	5.5	72	320
29	Sri Lanka	18.6	20.9	1.0	76.7	85.7	74.4	2.1	13	58
Central and Eastern Europe										
30	Albania	3.1	3.2	0.4	59.0	48.1	76.9	2.6	13	92
31	Belarus	10.1	9.6	-0.5	29.3	25.3	69.6	1.3	11	18
32	Bosnia & Herzegovina	3.6	3.8	0.4	..	51.4	75.5	..	13	3
33	Bulgaria	8.1	7.5	-0.7	30.7	28.5	73.7	1.1	9	11
34	Croatia	4.5	4.4	-0.3	42.7	42.3	76.7	1.7	4	7
35	Czech Rep.	10.3	10.5	0.2	25.3	26.5	76.9	1.2	81	4
36	Estonia	1.4	1.3	-0.3	31.2	30.5	73.7	1.2	4	25
37	Hungary	10.2	10.0	-0.2	36.2	31.9	73.9	1.4	5	6
38	Latvia	2.4	2.3	-0.6	31.0	32.3	73	1.1	8	10
39	Lithuania	3.5	3.3	-0.5	31.6	33.0	72.1	1.4	6	11
40	Moldova, Rep.	4.2	3.6	-1.4	53.8	53.0	68.9	1.6	15	22
41	Montenegro	0.6	0.6	-0.1	..	38.5	74.6	..	7	14
42	Poland	38.3	38.3	-	34.8	39.0	76	1.5	6	8
43	Romania	22.3	21.5	-0.3	44.1	42.5	73.2	1.3	12	24
44	Russian Fed.	147.3	143.0	-0.3	22.7	26.8	67.2	1.2	12	28
45	Serbia	10.2	9.9	-0.3	..	43.9	74.4	..	6	14
46	Slovakia	5.4	5.5	0.1	42.7	45.0	75.1	1.4	7	6
47	Slovenia	2.0	2.0	0.2	49.7	50.5	78.8	1.2	3	6

Annex III

Statistical Tables

Table S5 (continued)

S. No.	Country/Region	Total Population (in millions)		Population Average Annual Growth Rate (%)	Rural Population (%)		Life Expectancy at Birth (in Years)	Total Fertility Rate per Woman	Infant Mortality Rate	Maternal Mortality Rate
		1999	2010	1999-2010	1999	2010	2010	1995-2000	2008	2003-2008
48	Macedonia	2.0	2.1	0.3	38.4	40.7	74.5	1.9	10	10
49	Turkey	62.7	72.8	1.4	25.9	30.3	72.2	2.7	20	44
50	Ukraine	49.4	45.4	-0.8	32.1	31.2	68.6	1.3	14	18
Central Asia										
51	Armenia	3.1	3.1	-	30.3	35.8	74.2	1.4	21	76
52	Azerbaijan	8.0	9.2	1.2	43.1	48.1	70.8	1.9	32	82
53	Georgia	4.8	4.4	-0.9	39.8	47.2	72	1.6	26	66
54	Kazakhstan	15.1	16.0	0.6	43.6	41.5	65.4	2.1	27	140
55	Kyrgyzstan	4.9	5.3	0.8	66.4	65.4	68.4	2.9	33	150
56	Mongolia	2.4	2.8	1.3	37.0	38.0	67.3	2.7	34	46
57	Tajikistan	6.1	6.9	1.1	72.5	73.7	67.3	3.7	54	170
58	Turkmenistan	4.4	5.0	1.1	55.3	50.5	65.3	3.6	43	130
59	Uzbekistan	24.5	27.4	1.1	62.8	63.7	68.2	2.9	34	24
East Asia and Pacific										
60	Australia	18.9	22.3	1.5	15.3	10.9	81.9	1.8	5	4
61	Brunei Darussalam	0.3	0.4	2.0	28.3	24.3	77.4	2.8	6	13
62	Cambodia	12.2	14.1	1.3	84.4	79.9	62.2	5.3	69	540
63	China	1,259.5	1,341.3	0.6	68.4	53.0	73.5	1.8	18	45
64	Fiji	0.8	0.9	0.6	51.4	48.1	69.2	3.2	16	210
65	Hong Kong (China)	6.7	7.1	0.5	-	-	82.5	1.2
66	Indonesia	210.6	239.9	1.2	60.2	55.7	71.5	2.6	31	420
67	Japan	125.5	126.5	0.1	21.4	33.2	83.2	1.4	3	6
68	Kiribati	0.1	0.1	1.7	..	56.1	38	..
69	Korea, D.P.R.	22.7	24.3	0.6	..	39.8	67.7	..	42	370
70	Korea, Rep.	45.7	48.2	0.5	18.9	17.0	79.8	1.5	5	14
71	Lao P.D.R.	5.2	6.2	1.6	77.1	66.8	65.9	5.3	48	660
72	Malaysia	22.9	28.4	2.0	43.3	27.8	74.7	3.3	6	62
73	Marshall Islands	0.1	0.1	0.3	..	28.2	30	..
74	Micronesia	0.1	0.1	0.3	..	77.3	69	..	32	..
75	Myanmar	44.5	48.0	0.7	72.7	66.3	62.7	3.3	71	380
76	Nauru	-	-	0.2	..	-	36	..
77	New Zealand	3.8	4.4	1.2	14.3	13.8	80.6	2.0	5	9
78	Palau	-	-	0.7	..	16.6	13	..
79	Papua New Guinea	5.2	6.9	2.5	82.9	87.5	61.6	4.6	53	470
80	Philippines	75.7	93.3	1.9	42.3	51.1	72.3	3.6	26	230
81	Samoa	0.2	0.2	0.4	..	79.8	72.2	..	22	..
82	Singapore	3.8	5.1	2.6	-	-	80.7	1.6	2	14
83	Solomon Islands	0.4	0.5	2.8	..	81.4	67	..	30	220
84	Thailand	62.4	69.1	0.9	78.8	66.0	69.3	2.1	13	110
85	Timor-Leste	0.8	1.1	2.9	..	71.9	62.1	..	75	380
86	Tonga	0.1	0.1	0.6	..	76.6	72.1	..	17	..
87	Tuvalu	-	-	0.4	..	49.6	30	..
88	Vanuatu	0.2	0.2	2.6	..	74.4	70.8	..	27	..
89	Vietnam	77.9	87.8	1.1	80.3	69.6	74.9	2.5	12	150
Latin America and the Caribbean										
90	Antigua & Barbuda	0.1	0.1	1.4	..	69.7	11	..
91	Argentina	36.5	40.4	0.9	10.4	7.6	75.7	2.6	15	77
92	Bahamas	0.3	0.3	1.4	12.1	15.9	74.4	2.4	9	16
93	Barbados	0.3	0.3	0.2	50.5	55.5	77.7	1.5	10	16
94	Belize	0.2	0.3	2.2	46.4	47.7	76.9	3.4	17	52

Table S5 (continued)

S. No.	Country/Region	Total Population (in millions)		Population Average Annual Growth Rate (%)	Rural Population (%)		Life Expectancy at Birth (in Years)	Total Fertility Rate per Woman	Infant Mortal- ity Rate	Maternal Mortality Rate
		1999	2010	1999-2010	1999	2010	2010	1995-2000	2008	2003-2008
95	Bolivia	8.1	9.9	1.8	38.1	33.4	66.3	4.4	46	290
96	Brazil	171.9	194.9	1.2	19.3	13.5	72.9	2.3	18	110
97	Chile	15.2	17.1	1.1	14.6	11.0	78.8	2.4	7	16
98	Colombia	39.1	46.3	1.6	26.5	24.9	73.4	2.8	16	130
99	Costa Rica	3.8	4.7	1.8	52.4	35.6	79.1	2.8	10	30
100	Cuba	11.1	11.3	0.2	..	24.8	79	..	5	45
101	Dominica	0.1	0.1	-0.3	..	32.8	9	..
102	Dominican Republic	8.5	9.9	1.5	35.6	30.8	72.8	2.9	27	150
103	Ecuador	12.1	14.5	1.6	35.7	33.0	75.4	3.1	21	210
104	El Salvador	5.9	6.2	0.4	53.7	35.7	72	3.2	16	170
105	Grenada	0.1	0.1	0.3	..	60.7	75.8	..	13	..
106	Guatemala	11.0	14.4	2.5	60.6	50.5	70.8	4.9	29	290
107	Guyana	0.7	0.8	0.3	62.4	71.4	67.9	2.5	47	470
108	Haiti	8.5	10.0	1.5	64.9	47.9	61.7	4.4	54	670
109	Honduras	6.1	7.6	2.0	48.4	48.4	72.6	4.3	26	280
110	Jamaica	2.6	2.7	0.6	44.4	48.0	72.3	2.5	26	170
111	Mexico	98.5	113.4	1.3	25.8	22.2	76.7	2.8	15	60
112	Nicaragua	5.0	5.8	1.4	44.2	42.7	73.8	4.3	23	170
113	Panama	2.9	3.5	1.8	44.0	25.2	76	2.6	19	130
114	Paraguay	5.2	6.5	1.9	44.7	38.5	72.3	4.2	24	150
115	Peru	25.5	29.1	1.2	27.6	23.1	73.7	3.0	22	240
116	Saint Kitts & Nevis	-	0.1	1.3	..	67.6	14	..
117	Saint Lucia	0.2	0.2	1.1	..	72.0	74.2	..	13	..
118	Saint Vincent & the Grenadines	0.1	0.1	0.1	..	50.7	72	..	12	..
119	Suriname	0.5	0.5	1.2	26.5	30.6	69.4	2.2	25	72
120	Trinidad and Tobago	1.3	1.3	0.4	26.4	86.1	69.9	1.7	31	45
121	Uruguay	3.3	3.4	0.2	9.0	7.5	76.7	2.4	12	20
122	Venezuela	23.9	29.0	1.8	13.4	6.6	74.2	3.0	16	57
North America and Western Europe										
123	Andorra	0.1	0.1	2.6	..	12.0	80.8	..	3	..
124	Austria	8.0	8.4	0.5	35.4	32.4	80.4	1.4	3	4
125	Belgium	10.1	10.7	0.5	2.7	2.6	80.3	1.5	4	8
126	Canada	30.4	34.0	1.0	23.0	19.4	81	1.6	6	7
127	Cyprus	0.9	1.1	1.6	43.8	29.7	80	2.0	3	10
128	Denmark	5.3	5.6	0.4	14.7	13.1	78.7	1.7	4	3
129	Finland	5.2	5.4	0.4	33.3	14.9	80.1	1.7	3	7
130	France	58.8	62.8	0.6	24.6	14.7	81.6	1.7	3	8
131	Germany	82.3	82.3	-	12.7	26.1	80.2	1.3	4	4
132	Greece	10.9	11.4	0.3	40.1	38.6	79.7	1.3	3	3
133	Iceland	0.3	0.3	1.3	7.6	6.6	82.1	2.0	2	4
134	Ireland	3.8	4.5	1.6	41.2	38.1	80.3	1.9	3	1
135	Israel	5.9	7.4	2.1	8.9	8.1	81.2	2.9	4	4
136	Italy	56.9	60.6	0.6	33.1	31.6	81.4	1.2	3	3
137	Liechtenstein	-	-	1.0	..	85.7	79.6	..	2	..
138	Luxembourg	0.4	0.5	1.5	9.0	14.8	79.9	1.7	2	12
139	Malta	0.4	0.4	0.5	9.7	5.3	80	1.9	6	8
140	Monaco	-	-	0.2	..	-	3	..
141	Netherlands	15.8	16.6	0.5	10.7	17.1	80.3	1.5	4	6
142	Norway	4.5	4.9	0.8	24.9	20.6	81	1.8	3	7
143	Portugal	10.3	10.7	0.3	37.3	39.3	79.1	1.5	3	11

Annex III

Statistical Tables

Table S5 (continued)

S. No.	Country/Region	Total Population (in millions)		Population Average Annual Growth Rate (%)	Rural Population (%)		Life Expectancy at Birth (in Years)	Total Fertility Rate per Woman	Infant Mortality Rate	Maternal Mortality Rate
		1999	2010	1999-2010	1999	2010	2010	1995-2000	2008	2003-2008
144	San Marino	-	-	1.6	..	5.9	1	..
145	Spain	39.9	46.1	1.3	22.6	22.6	81.3	1.2	4	4
146	Sweden	8.9	9.4	0.5	16.7	15.3	81.3	1.5	2	3
147	Switzerland	7.1	7.7	0.7	32.3	26.4	82.2	1.5	4	5
148	United Kingdom	58.7	62.0	0.5	10.6	15.9	79.8	1.7	5	8
149	United States of America	279.3	310.4	1.0	23.0	17.7	77.7	2.0	7	11
	Sub-Saharan Africa									
150	Angola	13.5	19.1	3.2	66.5	41.5	48.1	7.2	130	1,400
151	Benin	6.3	8.8	3.1	58.5	58.0	62.3	6.1	76	840
152	Botswana	1.7	2.0	1.4	50.3	38.9	55.5	4.4	26	380
153	Burkina Faso	12.0	16.5	3.0	82.1	74.3	53.7	6.9	92	700
154	Burundi	6.3	8.4	2.7	91.3	89.0	51.4	6.8	102	1,100
155	Cameroon	15.3	19.6	2.3	52.0	41.6	51.7	5.1	82	1,000
156	Cape Verde	0.4	0.5	1.3	39.6	38.9	71.9	3.6	24	210
157	Central African Republic	3.6	4.4	1.8	59.2	61.1	47.7	5.3	115	980
158	Chad	7.9	11.2	3.2	76.5	72.4	49.2	6.7	124	1,500
159	Comoros	0.5	0.7	2.7	67.3	71.8	66.2	5.4	75	400
160	Congo	3.1	4.0	2.6	38.3	37.9	53.9	6.3	80	740
161	Congo, D.R.	48.4	66.0	2.9	70.0	64.8	48	6.7	126	1,100
162	Cote d'Ivoire	16.2	19.7	1.8	54.3	49.4	58.4	5.1	5	810
163	Equatorial Guinea	0.5	0.7	3.0	53.1	60.3	51	5.9	90	680
164	Eritrea	3.5	5.3	3.7	81.6	78.4	60.4	5.7	41	450
165	Ethiopia	63.9	82.9	2.4	82.8	83.3	56.1	6.8	69	720
166	Gabon	1.2	1.5	2.0	19.7	14.0	61.3	5.4	57	520
167	Gambia	1.3	1.7	2.9	68.2	41.8	56.6	5.2	80	690
168	Ghana	18.7	24.4	2.4	62.1	48.5	57.1	4.6	51	560
169	Guinea	8.2	10.0	1.8	68.0	64.6	58.9	6.3	90	910
170	Guinea-Bissau	1.2	1.5	2.0	76.7	70.0	48.6	6.0	117	1,100
171	Kenya	30.5	40.5	2.6	67.9	77.8	55.6	4.6	81	560
172	Lesotho	1.9	2.2	1.1	72.9	73.1	45.9	4.8	63	960
173	Liberia	2.7	4.0	3.6	..	52.2	59.1	..	100	1,200
174	Madagascar	14.9	20.7	3.1	71.0	69.8	61.2	6.1	68	510
175	Malawi	10.9	14.9	2.9	76.5	80.2	54.6	6.8	65	1,100
176	Mali	11.0	15.4	3.1	70.6	64.1	49.2	7.0	103	970
177	Mauritius	1.2	1.3	0.8	58.9	58.2	72.1	2.0	15	15
178	Mozambique	17.7	23.4	2.6	61.1	61.6	48.4	6.3	90	520
179	Namibia	1.9	2.3	1.9	69.6	62.0	62.1	5.3	31	210
180	Niger	10.5	15.5	3.6	79.9	82.9	52.5	8.0	79	1,800
181	Nigeria	120.8	158.4	2.5	56.9	50.2	48.4	5.9	96	1,100
182	Rwanda	7.6	10.6	3.1	93.9	81.1	51.1	6.2	72	1,300
183	São Tomé & Príncipe	0.1	0.2	1.6	78.5	37.8	66.1	4.5	64	..
184	Senegal	9.3	12.4	2.7	53.3	57.6	56.2	5.6	57	980
185	Seychelles	0.1	0.1	1.0	..	44.7	11	..
186	Sierra Leone	4.0	5.9	3.5	64.1	61.6	48.2	6.5	123	2,100
187	Somalia	7.2	9.3	2.4	..	62.5	50.4	..	119	1,400
188	South Africa	44.1	50.1	1.2	49.9	38.3	52	3.1	48	400
189	Swaziland	1.0	1.2	1.1	73.9	78.6	47	4.8	59	390
190	Tanzania	33.2	44.8	2.8	68.4	73.6	56.9	5.5	67	950
191	Togo	4.7	6.0	2.4	67.3	56.6	63.3	5.8	64	510
192	Uganda	23.5	33.4	3.3	86.2	86.7	54.1	7.1	85	550
193	Zambia	9.9	13.1	2.5	60.5	64.3	47.3	6.1	92	830
194	Zimbabwe	12.4	12.6	0.1	65.4	61.7	47.0	5.0	62	880

Table S5 Demographic Indicators (Continued)									
Country/Region	Total Population (in millions)		Population Average Annual Growth Rate (%)	Rural Population (%)		Life Expectancy at Birth (in Years)	Total Fertility Rate per Woman	Infant Mortality Rate	Maternal Mortality Rate
	1999	2010	1999-2010	1999	2010	2010	1995-2000	2008	2003-2008
Regions									
Arab States	271.6	347.6	3.2	29.9	30.9	54.3	4.2	68.9	869.0
South & West Asia	1,434.6	1,704.2	1.8	72.8	67.2	66.2	4.3	54.6	525.3
Central & Eastern Europe	401.6	400.6	(0.2)	36.7	37.7	73.6	1.5	12.7	18.1
Central Asia	73.3	80.1	0.7	50.1	51.5	68.8	2.5	33.8	98.2
East Asia & Pacific	2,006.3	2,176.6	1.2	46.7	47.4	72.2	2.8	26.9	215.4
Latin America & the Caribbean	508.6	584.8	1.1	36.1	38.5	73.5	3.0	19.9	153.2
North America & Western Europe	704.2	763.3	0.9	22.5	21.3	80.4	1.7	3.5	6.1
Sub-Saharan Africa	614.8	807.2	2.4	65.8	60.8	55.0	5.7	74.8	837.0
WORLD	6,015.0	6,864.4	1.3	45.1	44.5	68	3.4	36.9	340.3

Annex III

Statistical Tables

Table S6 Economy and Quality of Life Indicators

S. No.	Country/Region	Rural Population (%)		Human Development Index (HDI)	Gross National Income (GNI) Per Capital (US \$)	Labour Force Participation Rate (%)		Population Average Annual Growth Rate (%)	
		1999	2010			Total	Female	Water	Sanitation
		1999	2010	2010	2010	2008		2008	
Arab States									
1	Algeria	40.5	33.5	0.700	8,320	43	38.2	17	5
2	Bahrain	8.2	11.4	0.800	26,664	73.8	74.3	..	-
3	Djibouti	17.0	23.8	0.400	2,471	63.9	64.5	-	-
4	Egypt	55.0	56.6	0.600	5,889	50.6	63.2	8	44
5	Iraq	..	33.8	64.3	56	-	4
6	Jordan	26.4	21.5	0.700	5,956	43.2	32.5
7	Kuwait	2.6	1.6	0.800	55,719	49.2	51.6	-	..
8	Lebanon	10.7	12.8	..	13,475	47.6	26.9	1	10
9	Libyan A.J.	12.8	22.1	0.800	17,068
10	Mauritania	43.6	58.6	0.400	2,118	54	25.1	..	3
11	Morocco	44.7	41.8	0.600	4,628	64.9	58.3	9	2
12	Oman	17.8	27.0	..	25,653	78.4	42.5	-	3
13	Palestinian O.T.	..	25.9	58.5	62.3	2	5
14	Qatar	7.7	4.2	0.800	79,426	68.1	72.1	-	..
15	Saudi Arabia	14.9	17.9	0.800	24,726	42.8	16.7	9	11
16	Sudan	64.9	59.9	0.400	2,051	85.5	49.3	-	-
17	Syrian A.R.	46.0	44.3	0.600	4,760	69.4	55.3	2	..
18	Tunisia	35.2	32.7	0.700	7,979	67.5	67.1	51	87
19	United Arab Emirates	14.5	20.4	0.900	47,094	58.9	63.2	-	-
20	Yemen	75.5	68.2	0.400	2,387	64.2	77.1	-	-
21	Afghanistan	..	77.4	0.300	1,419	48.9	33.3	52	63
South West Asia									
22	Bangladesh	76.1	71.9	0.500	1,587	69.1	33.5
23	Bhutan	93.1	65.3	..	5,607	89.4	88.8	46	76
24	India	71.9	70.0	0.500	3,337	60.2	49.2	6	19
25	Iran, I.R.	38.9	29.2	0.700	11,764	61.7	43.4	14	29
26	Maldives	73.9	59.9	0.600	5,408	45.5	24.1	-	..
27	Nepal	88.4	81.4	0.400	1,201	52.9	60.4	51	74
28	Pakistan	63.5	64.1	0.500	2,678	2	8
29	Sri Lanka	76.7	85.7	0.700	4,886	62.6	69	1	-
Central and Eastern Europe									
30	Albania	59.0	48.1	0.700	7,976	60.5	55.5	3	2
31	Belarus	29.3	25.3	0.700	12,926	70.3	76.5	-	-
32	Bosnia & Herzegovina	..	51.4	0.700	8,222	71	54.1	8	35
33	Bulgaria	30.7	28.5	0.700	11,139	69.6	64	3	20
34	Croatia	42.7	42.3	0.800	16,389	62.7	48.8	3	5
35	Czech Rep.	25.3	26.5	0.800	22,678	53.2	58.9	1	1
36	Estonia	31.2	30.5	0.800	17,168	67.9	48.1	6	8
37	Hungary	36.2	31.9	0.800	17,472	71.3	82.3	29	81
38	Latvia	31.0	32.3	0.800	12,944	41	24.7	4	2
39	Lithuania	31.6	33.0	0.800	14,824	60.8	54.5	2	-
40	Moldova, Rep.	53.8	53.0	0.600	3,149	86.3	86	59	89
41	Montenegro	..	38.5	0.800	12,491	61	46.7	-	4
42	Poland	34.8	39.0	0.800	17,803	83.9	65.9	12	69
43	Romania	44.1	42.5	0.800	12,844	62.2	48.6	15	48
44	Russian Fed.	22.7	26.8	0.700	15,258	64.6	37.9	52	91
45	Serbia	..	43.9	0.700	10,449	52.9	21.8	10	55
46	Slovakia	42.7	45.0	0.800	21,658	72.6	72.1	60	55
47	Slovenia	49.7	50.5	0.800	25,857	70.8	58	14	30
48	Macedonia	38.4	40.7	0.700	9,487	58.9	46.9	11	74

Table S6 (continued)

S. No.	Country/Region	Rural Population (%)		Human Development Index (HDI)	Gross National Income (GNI) Per Capital (US \$)	Labour Force Participation Rate (%)		Population Average Annual Growth Rate (%)	
		1999	2010			Total	Female	Water	Sanitation
		1999	2010	2010	2010	2008		2008	
49	Turkey	25.9	30.3	0.700	13,359	66.4	60.6	-	-
50	Ukraine	32.1	31.2	0.700	6,535	66.9	24.6
	Central Asia								
51	Armenia	30.3	35.8	0.700	5,495	61.5	57	3	10
52	Azerbaijan	43.1	48.1	0.700	8,747	60.7	68.3	-	-
53	Georgia	39.8	47.2	0.700	4,902	59.8	40.2
54	Kazakhstan	43.6	41.5	0.700	10,234	41	14.2	21	27
55	Kyrgyzstan	66.4	65.4	0.600	2,291	66.8	62.2	6	17
56	Mongolia	37.0	38.0	0.600	3,619	83.3	74.6	20	44
57	Tajikistan	72.5	73.7	0.600	2,020	66.6	61.4
58	Turkmenistan	55.3	50.5	0.700	7,052	59.4	61.3	-	-
59	Uzbekistan	62.8	63.7	0.600	3,085	53.4	32.3	43	66
	East Asia and Pacific								
60	Australia	15.3	10.9	0.900	38,692	57.1	68.6	4	10
61	Brunei Darussalam	28.3	24.3	0.800	49,915	76.2	75.1	5	40
62	Cambodia	84.4	79.9	0.500	1,868	83.8	79.7	24	89
63	China	68.4	53.0	0.700	7,258	72.2	64	50	91
64	Fiji	51.4	48.1	0.700	4,315	61.4	50.5	13	13
65	Hong Kong (China)	-	-	0.900	45,090	67	50	6	19
66	Indonesia	60.2	55.7	0.600	3,957	64.4	58.4	37	83
67	Japan	21.4	33.2	0.900	34,692	67.3	53.3	20	48
68	Kiribati	..	56.1	..	3,715	65.1	59.4	6	8
69	Korea, D.P.R.	..	39.8	46.9	27.7	6	15
70	Korea, Rep.	18.9	17.0	0.900	29,518	56.7	61.1	-	-
71	Lao P.D.R.	77.1	66.8	0.500	2,321	60.4	62.1	-	-
72	Malaysia	43.3	27.8	0.700	13,927	62.4	70.6	1	22
73	Marshall Islands	..	28.2	60.5	65.3	..	2
74	Micronesia	..	77.3	0.600	3,266	55.2	58.1	-	-
75	Myanmar	72.7	66.3	0.500	1,596	50.3	41.3	-	-
76	Nauru	..	-	78.1	80.5	33	52
77	New Zealand	14.3	13.8	0.900	25,438	61.8	46.3	6	15
78	Palau	..	16.6	62.4	69.2	-	-
79	Papua New Guinea	82.9	87.5	0.400	2,227	85	85.7	53	83
80	Philippines	42.3	51.1	0.600	4,002
81	Samoa	..	79.8	..	4,126	71.4	79.7	17	48
82	Singapore	-	-	0.800	48,893	65.9	52.6	7	31
83	Solomon Islands	..	81.4	0.500	2,172	75.1	61.3	18	32
84	Thailand	78.8	66.0	0.700	8,001
85	Timor-Leste	..	71.9	0.500	5,303	50.4	21.8
86	Tonga	..	76.6	0.700	4,038	54.5	..	1	8
87	Tuvalu	..	49.6	79.7	60.4	40	51
88	Vanuatu	..	74.4	..	3,908	86.2	60.8	18	56
89	Vietnam	80.3	69.6	0.600	2,995	56.4	55.2	31	45
	Latin America and the Caribbean								
90	Antigua & Barbuda	..	69.7	..	17,924	65.4	59.1	30	6
91	Argentina	10.4	7.6	0.800	14,603
92	Bahamas	12.1	15.9	0.800	25,201	63.5	66.3	20	55
93	Barbados	50.5	55.5	0.800	21,673	70.7	61.4	20	47
94	Belize	46.4	47.7	0.700	5,693	53.8	60.9	-	-
95	Bolivia	38.1	33.4	0.600	4,357	72.4	68.1	25	88

Annex III

Statistical Tables

Table S6 (continued)

S. No.	Country/Region	Rural Population (%)		Human Development Index (HDI)	Gross National Income (GNI) Per Capital (US \$)	Labour Force Participation Rate (%)		Population Average Annual Growth Rate (%)	
		1999	2010			2010	2010	Total	Female
						2008		2008	
96	Brazil	19.3	13.5	0.700	10,607	45.7	65.4	1	5
97	Chile	14.6	11.0	0.800	13,561	78.5	71.6	33	66
98	Colombia	26.5	24.9	0.700	8,589	57.7	48.1	4	4
99	Costa Rica	52.4	35.6	0.700	10,870	70.1	62.4	29	70
100	Cuba	..	24.8	72.8	70.7	2	4
101	Dominica	..	32.8	..	8,549	55.1	50.4	-	11
102	Dominican Republic	35.6	30.8	0.700	8,273	58.6	61.1	-	2
103	Ecuador	35.7	33.0	0.700	7,931	66.1	77.2	-	-
104	El Salvador	53.7	35.7	0.700	6,498
105	Grenada	..	60.7	..	7,998	80.6	64.6	40	88
106	Guatemala	60.6	50.5	0.600	4,694	77.5	71.2	8	33
107	Guyana	62.4	71.4	0.600	3,302	69	75.2	18	87
108	Haiti	64.9	47.9	0.400	949	53.9	55.4	-	2
109	Honduras	48.4	48.4	0.600	3,750	3
110	Jamaica	44.4	48.0	0.700	7,207	57.6	35.7	12	69
111	Mexico	25.8	22.2	0.800	13,971	56.8	65.5
112	Nicaragua	44.2	42.7	0.600	2,567
113	Panama	44.0	25.2	0.800	13,347	50.7	28.7	19	31
114	Paraguay	44.7	38.5	0.600	4,585	78.3	64.2	29	19
115	Peru	27.6	23.1	0.700	8,424	63.8	53.5	8	67
116	Saint Kitts & Nevis	..	67.6	..	14,196	65.1	68.7	1	-
117	Saint Lucia	..	72.0	..	8,652	65.1	64.4	-	-
118	Saint Vincent & the Grenadines	..	50.7	..	8,535	60.3	61.7	13	-
119	Suriname	26.5	30.6	0.600	7,093	55.8	55.3	..	28
120	Trinidad and Tobago	26.4	86.1	0.700	24,233
121	Uruguay	9.0	7.5	0.800	13,808	56.2	38.5	10	9
122	Venezuela	13.4	6.6	0.700	11,846	53.7	41.8	7	16
North America and Western Europe									
123	Andorra	..	12.0	0.800	38,056	-	-
124	Austria	35.4	32.4	0.900	37,056	65.6	69.9	-	-
125	Belgium	2.7	2.6	0.900	34,873	55.4	68.1	-	7
126	Canada	23.0	19.4	0.900	38,668	82.8	75.6	39	71
127	Cyprus	43.8	29.7	0.800	21,962	66.7	51.3	20	77
128	Denmark	14.7	13.1	0.900	36,404	55	48.6	6	9
129	Finland	33.3	14.9	0.900	33,872	86.6	39.4
130	France	24.6	14.7	0.900	34,341	84.4	61.6	39	86
131	Germany	12.7	26.1	0.900	35,308	61.9	73.9	-	-
132	Greece	40.1	38.6	0.900	27,580	60.2	71.1	13	67
133	Iceland	7.6	6.6	0.900	22,917	72.6	61.2	39	79
134	Ireland	41.2	38.1	0.900	33,078	60.3	60.5
135	Israel	8.9	8.1	0.900	27,831	50	54.8	-	-
136	Italy	33.1	31.6	0.900	29,619	75.8	81.7	-	-
137	Liechtenstein	..	85.7	0.900	81,011	78	60.7	-	..
138	Luxembourg	9.0	14.8	0.900	51,109	67.3	45.6	1	-
139	Malta	9.7	5.3	0.800	21,004	60.7	69.1	32	83
140	Monaco	..	-	3	16
141	Netherlands	10.7	17.1	0.900	40,658	58.4	46.3	1	9
142	Norway	24.9	20.6	0.900	58,810	58.7	70	24	50
143	Portugal	37.3	39.3	0.800	22,105	66.3	73.4	-	-
144	San Marino	..	5.9	65.3	54

Table S6 (continued)

S. No.	Country/Region	Rural Population (%)		Human Development Index (HDI)	Gross National Income (GNI) Per Capital (US \$)	Labour Force Participation Rate (%)		Population Average Annual Growth Rate (%)	
		1999	2010			2010	2010	Total	Female
		1999	2010	2010	2010	2008		2008	
145	Spain	22.6	22.6	0.900	29,661	54.5	56.9	-	10
146	Sweden	16.7	15.3	0.900	36,936	85.3	87.9	35	46
147	Switzerland	32.3	26.4	0.900	39,849	1	4
148	United Kingdom	10.6	15.9	0.800	35,087	55.3	51	9	23
149	United States of America	23.0	17.7	0.800	58,006	57	58	70	77
	Sub-Saharan Africa								
150	Angola	66.5	41.5	0.400	4,941	69.1	76.3	50	43
151	Benin	58.5	58.0	0.400	1,499	63.9	49	1	10
152	Botswana	50.3	38.9	0.600	13,204	71.8	64.1	14	75
153	Burkina Faso	82.1	74.3	0.300	1,215	66.6	62.6
154	Burundi	91.3	89.0	0.300	402	55.6	63.4	-	-
155	Cameroon	52.0	41.6	0.500	2,197	82.8	91.5	28	54
156	Cape Verde	39.6	38.9	0.500	3,306	70.1	54	26	53
157	Central African Republic	59.2	61.1	0.300	758	67.3	74.3	-	-
158	Chad	76.5	72.4	0.300	1,067	65.7	56.2	16	46
159	Comoros	67.3	71.8	0.400	1,176	74.5	74.5	11	45
160	Congo	38.3	37.9	0.500	3,258	64.3	43.3	8	26
161	Congo, D.R.	70.0	64.8	0.200	291	57	74.6	5	64
162	Cote d'Ivoire	54.3	49.4	0.400	1,625	71.3	57.4	54	77
163	Equatorial Guinea	53.1	60.3	0.500	22,218	64.9	54.6	14	17
164	Eritrea	81.6	78.4	..	643		61.6	31	50
165	Ethiopia	82.8	83.3	0.300	992	48.4	24.4	1	6
166	Gabon	19.7	14.0	0.600	12,747	61.7	70.2	2	5
167	Gambia	68.2	41.8	0.400	1,358	84.3	80.8	62	88
168	Ghana	62.1	48.5	0.500	1,385	56.3	65.8	-	-
169	Guinea	68.0	64.6	0.300	953	63.5	59.8	2	5
170	Guinea-Bissau	76.7	70.0	0.300	538	59.4	70.8	-	-
171	Kenya	67.9	77.8	0.500	1,628	62.8	62.8	-	1
172	Lesotho	72.9	73.1	0.400	2,021	70.6	73.9	5	3
173	Liberia	..	52.2	0.300	320	65.7	77.6	41	69
174	Madagascar	71.0	69.8	0.400	953	65.9	60.9	10	7
175	Malawi	76.5	80.2	0.400	911	78.3	81.4	43	47
176	Mali	70.6	64.1	0.300	1,171	65.5	71.9	15	71
177	Mauritius	58.9	58.2	0.700	13,344
178	Mozambique	61.1	61.6	0.300	854	52.5	38.1	44	64
179	Namibia	69.6	62.0	0.600	6,323		..	6	27
180	Niger	79.9	82.9	0.300	675	44.2	53.4	10	21
181	Nigeria	56.9	50.2	0.400	2,156	-	-
182	Rwanda	93.9	81.1	0.400	1,190	55.2	39.5	42	68
183	São Tomé & Príncipe	78.5	37.8	0.500	1,918	67.4	77.3	-	-
184	Senegal	53.3	57.6	0.400	1,816	57.8	26.1	12	..
185	Seychelles	..	44.7	..	19,128	77	74.2	6	25
186	Sierra Leone	64.1	61.6	0.300	809
187	Somalia	..	62.5	47.8	20.1	38	48
188	South Africa	49.9	38.3	0.600	9,812	63.8	50.2	9	24
189	Swaziland	73.9	78.6	0.500	5,132	62.7	68.7	4	13
190	Tanzania	68.4	73.6	0.400	1,344	61.3	41.8	..	-
191	Togo	67.3	56.6	0.400	844	76.7	65.3	31	49
192	Uganda	86.2	86.7	0.400	1,224	59.3	67.5	1	-
193	Zambia	60.5	64.3	0.400	1,359	68.3	76.6	-	-
194	Zimbabwe	65.4	61.7	0.100	176	44	22	11	4

Annex III

Statistical Tables

Table S6 Economy and Quality of Life Indicators (Continued)

Country/Region	Rural Population (%)		Human Development Index (HDI)	Gross National Income (GNI) Per Capital (US \$)	Labour Force Participation Rate (%)		Population Average Annual Growth Rate (%)			
	1999	2010			2010	2010	Total	Female	Water	Sanitation
							2008		2008	
Regions										
Arab States	29.9	30.9	...	8,150	60.1	52	14.4	23.2		
South West Asia	72.8	67.2	...	1,348	61.3	50.2	21.5	38.4		
Central & Eastern Europe	36.7	37.7	...	3,337	65.5	54.1	14.6	33.5		
Central Asia	50.1	51.5	...	12,944	61.4	52.4	13.3	23.4		
East Asia & Pacific	46.7	47.4	...	4,902	65.5	60	15.2	31.9		
Latin America & the Caribbean	36.1	38.5	...	4,126	63.4	59.5	12.7	28.9		
North America & Western Europe	22.5	21.3	...	8,542	66	62.1	13.8	31		
Sub-Saharan Africa	65.8	60.8	...	35,087	63.9	59.6	15.9	28.8		
WORLD	45.1	44.5	...	1,351	63.4	56.3	15.2	29.9		

Table S7 Education Indicators									
S. No.	Country/Region	Rural Population (%)		Adult Literacy Rate (15 and over)		NER in Pre-Primary Education (%) School Year Ending in 2008		Population Average Annual Growth Rate (%)	
		1999	2010	Total	Female	Male	Female	Water	Sanitation
	Arab States								
1	Algeria	40.5	33.5	73	64	23	23	95.8	94
2	Bahrain	8.2	11.4	91	89	91.6	97
3	Djibouti	17.0	23.8	45.3	39
4	Egypt	55.0	56.6	66	58	84	83	...	92
5	Iraq	..	33.8	78	69
6	Jordan	26.4	21.5	92	89	99	91	93.8	90
7	Kuwait	2.6	1.6	94	93	66	66	93.4	87
8	Lebanon	10.7	12.8	90	86	68	69	89.3	89
9	Libyan A.J.	12.8	22.1	88	81
10	Mauritania	43.6	58.6	57	50	98	100	76.9	79
11	Morocco	44.7	41.8	56	44	52	51	89.9	87
12	Oman	17.8	27.0	87	81	69
13	Palestinian O.T.	..	25.9	94	91	22	23	77.5	75
14	Qatar	7.7	4.2	93	90
15	Saudi Arabia	14.9	17.9	86	80	53	53	84.6	84
16	Sudan	64.9	59.9	69	60
17	Syrian A.R.	46.0	44.3	84	77
18	Tunisia	35.2	32.7	78	71	90	89	99.5	98
19	United Arab Emirates	14.5	20.4	90	91	100	100	...	91
20	Yemen	75.5	68.2	61	43	37	39	73	66
	South West Asia								
21	Afghanistan	..	77.4	73	73
22	Bangladesh	76.1	71.9	55	50	99.3	86
23	Bhutan	93.1	65.3	53	39	84.2	88
24	India	71.9	70.0	63	51	51	51	96.9	88
25	Iran, I.R.	38.9	29.2	82	77
26	Maldives	73.9	59.9	98	98	96.2	95
27	Nepal	88.4	81.4	58	45
28	Pakistan	63.5	64.1	54	40	36	39	66.1	60
29	Sri Lanka	76.7	85.7	91	89	10	10	99.5	100
	Central and Eastern Europe								
30	Albania	59.0	48.1	99	99
31	Belarus	29.3	25.3	100	100	94.8	96
32	Bosnia & Herzegovina	..	51.4	98	96
33	Bulgaria	30.7	28.5	98	98	40	40	97.4	96
34	Croatia	42.7	42.3	99	98	98.6	90
35	Czech Rep.	25.3	26.5	12	13	...	91
36	Estonia	31.2	30.5	100	100	50	50	96.5	94
37	Hungary	36.2	31.9	80	88	95.4	89
38	Latvia	31.0	32.3	100	100	63	66	94.1	...
39	Lithuania	31.6	33.0	100	100	78	76	96.1	91
40	Moldova, Rep.	53.8	53.0	98	98	12	13	90.5	87
41	Montenegro	..	38.5	2	2
42	Poland	34.8	39.0	95.4	96
43	Romania	44.1	42.5	98	97	17	18	96.5	90
44	Russian Fed.	22.7	26.8	100	99	94.1	...
45	Serbia	..	43.9	56	57	98	95
46	Slovakia	42.7	45.0	91	95
47	Slovenia	49.7	50.5	100	100	4	4	97.5	97

Annex III

Statistical Tables

Table S7 (continued)

S. No.	Country/Region	Rural Population (%)		Adult Literacy Rate (15 and over)		NER in Pre-Primary Education (%) School Year Ending in 2008		Population Average Annual Growth Rate (%)	
				Total	Female	Male	Female	Water	Sanitation
		1999	2010	2005-2008		2008		2008	2008
48	Macedonia	38.4	40.7	97	95	91.5	87
49	Turkey	25.9	30.3	89	81	52	54	94.7	94
50	Ukraine	32.1	31.2	100	100	89.4	89
Central Asia									
51	Armenia	30.3	35.8	100	99	43	44	...	86
52	Azerbaijan	43.1	48.1	100	99	95
53	Georgia	39.8	47.2	100	100	12	13	99	98
54	Kazakhstan	43.6	41.5	100	100	99.1	90
55	Kyrgyzstan	66.4	65.4	99	99	91	83
56	Mongolia	37.0	38.0	97	98	99.2	88
57	Tajikistan	72.5	73.7	100	100	52	50	97.5	95
58	Turkmenistan	55.3	50.5	100	99	97	97
59	Uzbekistan	62.8	63.7	99	99	73	73	90.6	87
East Asia and Pacific									
60	Australia	15.3	10.9	97
61	Brunei Darussalam	28.3	24.3	95	93	97.3	93
62	Cambodia	84.4	79.9	78	71	91	93	88.6	87
63	China	68.4	53.0	94	91	2	2
64	Fiji	51.4	48.1	91.7	89
65	Hong Kong (China)	-	-	99	...
66	Indonesia	60.2	55.7	92	89	98.7	94
67	Japan	21.4	33.2	16	15	100	...
68	Kiribati	..	56.1	50	52
69	Korea, D.P.R.	..	39.8	100	100	30	31
70	Korea, Rep.	18.9	17.0	67	69	99	98
71	Lao P.D.R.	77.1	66.8	73	63	82.4	81
72	Malaysia	43.3	27.8	92	90	90	91	94.1	96
73	Marshall Islands	..	28.2	3	3	...	66
74	Micronesia	..	77.3	15	15
75	Myanmar	72.7	66.3	92	89	65	65
76	Nauru	..	-	100	100	...	73
77	New Zealand	14.3	13.8	99.5	100
78	Palau	..	16.6	41	50
79	Papua New Guinea	82.9	87.5	60	56
80	Philippines	42.3	51.1	94	94	48	50	92.1	93
81	Samoa	..	79.8	99	99	93	97	...	93
82	Singapore	-	-	95	92	28	28
83	Solomon Islands	..	81.4	9	9	...	67
84	Thailand	78.8	66.0	94	92	90.8	89
85	Timor-Leste	..	71.9	71	71	77.3	74
86	Tonga	..	76.6	99	99	27	27
87	Tuvalu	..	49.6	87	86
88	Vanuatu	..	74.4	98	98
89	Vietnam	80.3	69.6	93	90
Latin America and the Caribbean									
90	Antigua & Barbuda	..	69.7	99	99	90.5	86
91	Argentina	10.4	7.6	98	98
92	Bahamas	12.1	15.9	91	93	84	92
93	Barbados	50.5	55.5	97	95	88.4	...
94	Belize	46.4	47.7	79	82	99.7	98

Table S7 (continued)

S. No.	Country/Region	Rural Population (%)		Adult Literacy Rate (15 and over)		NER in Pre-Primary Education (%) School Year Ending in 2008		Population Average Annual Growth Rate (%)	
		1999	2010	Total	Female	Male	Female	Water	Sanitation
								2005-2008	
95	Bolivia	38.1	33.4	91	86	35	32		94
96	Brazil	19.3	13.5	90	90	39	39	95.1	93
97	Chile	14.6	11.0	99	99	64	62	95.1	94
98	Colombia	26.5	24.9	93	93	14	14	93.5	90
99	Costa Rica	52.4	35.6	96	96	13	14		...
100	Cuba	..	24.8	100	100	87	86	99.5	99
101	Dominica	..	32.8	74	74	98.3	76
102	Dominican Republic	35.6	30.8	88	88	82.4	80
103	Ecuador	35.7	33.0	84	82	21	20	97.4	97
104	El Salvador	53.7	35.7	84	81	8	7	95.6	95
105	Grenada	..	60.7	72	71	98.5	93
106	Guatemala	60.6	50.5	74	69	87	85	96.4	94
107	Guyana	62.4	71.4	98.5	95
108	Haiti	64.9	47.9	9	9		...
109	Honduras	48.4	48.4	84	83	97.2	98
110	Jamaica	44.4	48.0	86	91	58	63	80.5	79
111	Mexico	25.8	22.2	93	91	84	84	99.5	98
112	Nicaragua	44.2	42.7	78	78	93.4	92
113	Panama	44.0	25.2	94	93	98.9	98
114	Paraguay	44.7	38.5	95	93	89	92	88.1	90
115	Peru	27.6	23.1	90	85	96	97	97.3	95
116	Saint Kitts & Nevis	..	67.6	84	...
117	Saint Lucia	..	72.0	93.5	91
118	Saint Vincent & the Grenadines	..	50.7	45	49	97.5	92
119	Suriname	26.5	30.6	91	88	90.1	90
120	Trinidad and Tobago	26.4	86.1	99	98	83	63	95.3	91
121	Uruguay	9.0	7.5	98	98	99	98
122	Venezuela	13.4	6.6	95	95	6	6	92.1	90
North America and Western Europe									
123	Andorra	..	12.0	85	79
124	Austria	35.4	32.4	58	57	97.1	...
125	Belgium	2.7	2.6	98.6	99
126	Canada	23.0	19.4
127	Cyprus	43.8	29.7	98	97	100	100	99	98
128	Denmark	14.7	13.1	92	95	95.4	96
129	Finland	33.3	14.9	55	56	96.2	96
130	France	24.6	14.7	2	2	99.1	99
131	Germany	12.7	26.1	99.7	98
132	Greece	40.1	38.6	97	96		100
133	Iceland	7.6	6.6	94	95	97.6	98
134	Ireland	41.2	38.1	26	26	97.1	98
135	Israel	8.9	8.1	23	26	97.1	98
136	Italy	33.1	31.6	99	99	99.3	98
137	Liechtenstein	..	85.7	89.7	...
138	Luxembourg	9.0	14.8	97.5	97
139	Malta	9.7	5.3	92	94	61	61	91.3	92
140	Monaco	..	-
141	Netherlands	10.7	17.1	31	32	98.9	98
142	Norway	24.9	20.6	69	70	98.7	99
143	Portugal	37.3	39.3	95	93	39	38	98.7	98

Annex III

Statistical Tables

Table S7 (continued)

S. No.	Country/Region	Rural Population (%)		Adult Literacy Rate (15 and over)		NER in Pre-Primary Education (%) School Year Ending in 2008		Population Average Annual Growth Rate (%)	
				Total	Female	Male	Female	Water	Sanitation
		1999	2010	2005-2008				2008	
144	San Marino	..	5.9	58	59
145	Spain	22.6	22.6	98	97	78	80	99.8	100
146	Sweden	16.7	15.3	45	47	94.6	94
147	Switzerland	32.3	26.4	51	51	99.1	94
148	United Kingdom	10.6	15.9	72	71	99.8	100
149	United States of America	23.0	17.7	72	72	93.1	93
Sub-Saharan Africa									
150	Angola	66.5	41.5	70	57	7	8
151	Benin	58.5	58.0	41	28	50	50	93.6	86
152	Botswana	50.3	38.9	83	84	85	88	...	88
153	Burkina Faso	82.1	74.3	29	22	4	4	61.2	59
154	Burundi	91.3	89.0	66	60	99.4	99
155	Cameroon	52.0	41.6	76	68	88.3	82
156	Cape Verde	39.6	38.9	84	79	82	80	84.8	84
157	Central African Republic	59.2	61.1	55	41	66.3	57
158	Chad	76.5	72.4	33	22
159	Comoros	67.3	71.8	74	68
160	Congo	38.3	37.9	99	100	...	56
161	Congo, D.R.	70.0	64.8	67
162	Cote d'Ivoire	54.3	49.4	55	44
163	Equatorial Guinea	53.1	60.3	93	89	80	80	56.8	...
164	Eritrea	81.6	78.4	65	55	40.2	36
165	Ethiopia	82.8	83.3	36	23	100	100	83	75
166	Gabon	19.7	14.0	87	83	75	74
167	Gambia	68.2	41.8	45	34	10	9	71.9	71
168	Ghana	62.1	48.5	66	59	7	6	77	77
169	Guinea	68.0	64.6	38	26	37	37	72.3	66
170	Guinea-Bissau	76.7	70.0	51	37	80	80
171	Kenya	67.9	77.8	87	83	82.3	82
172	Lesotho	72.9	73.1	90	95	7	8	73.7	74
173	Liberia	..	52.2	58	53
174	Madagascar	71.0	69.8	71	65	99
175	Malawi	76.5	80.2	73	66	66	66	91.2	93
176	Mali	70.6	64.1	26	18	74.7	66
177	Mauritius	58.9	58.2	88	85	18	17	93.1	95
178	Mozambique	61.1	61.6	54	40	89.3	77
179	Namibia	69.6	62.0	88	88	90.7	91
180	Niger	79.9	82.9	29	15	84	100	49.5	48
181	Nigeria	56.9	50.2	60	49	10	10	...	58
182	Rwanda	93.9	81.1	70	66	95.9	97
183	São Tomé & Príncipe	78.5	37.8	88	83	63	61	96.7	97
184	Senegal	53.3	57.6	42	33	75	76	75.2	74
185	Seychelles	..	44.7	92	92	34	35	94.4	...
186	Sierra Leone	64.1	61.6	40	29	53	54
187	Somalia	..	62.5	28	15	72	73
188	South Africa	49.9	38.3	89	88	17	18	91.1	88
189	Swaziland	73.9	78.6	87	86	5	5	...	84
190	Tanzania	68.4	73.6	73	66	97.4	99
191	Togo	67.3	56.6	65	54	65	65	87.3	89
192	Uganda	86.2	86.7	75	67	98
193	Zambia	60.5	64.3	71	61	96.8	96
194	Zimbabwe	65.4	61.7	91.0	89.0	91.0

Table S7 Education Indicators (Continued)

Country/Region	Rural Population (%)		Adult Literacy Rate (15 and over)		NER in Pre-Primary Education (%) School Year Ending in 2008		Population Average Annual Growth Rate (%)	
	1999	2010	Total	Female	Male	Female	Water	Sanitation
							2005-2008	
Regions								
Arab States	29.9	30.9	80.4	74.1	66.0	65.6	84.2	82.5
South & West Asia	72.8	67.2	69.3	61.1	42.5	43.3	90.4	86.2
Central & Eastern Europe	36.7	37.7	71.2	64.6	44.9	45.4	303.4	89.3
Central Asia	50.1	51.5	73.6	66.6	51.1	51.4	621.5	86.0
East Asia & Pacific	46.7	47.4	68.2	61.1	48.8	50.2	244.3	84.8
Latin America & the Caribbean	36.1	38.5	91.3	90.2	56.9	56.2	93.8	92.1
North America & Western Europe	22.5	21.3	96.5	96.0	57.0	57.7	96.6	96.5
Sub-Saharan Africa	65.8	60.8	64.8	57.3	49.4	50.2	81.2	79.8
WORLD	45.1	44.5	76.9	71.4	52.1	52.5	201.9	87.1

Annex III

Statistical Tables

Table S7 Education Indicators (Continued)

S. No.	Country/Region	School Life Expectancy (Expected Number of Years of Formal Schooling from Primary to Tertiary Education) 2008		Survival Rate to Grade 5 (Primary Education)		NER in Second- ary Education	Enrolment in Technical Education (as % of Total Secondary Enrolment)	GER Combined (Pri+Sec+ Ter)	Total Aid to Educa- tion Constant 2008 Prices US\$ millions	Share of Basic Education in Total Aid to Education (%)
		Male	Female	Total	Female					
						2007		2008	2008	2008
Arab States										
1	Algeria	96	97	...	15.4	...	156	8.3
2	Bahrain	13.6	15.1	89	4.9
3	Djibouti	5.3	4.1	24	23	43.5
4	Egypt	257	63
5	Iraq	4	...	129	43.4
6	Jordan	12.9	13.3	82	1.6	78	97	42.3
7	Kuwait	100	99	80	16.1
8	Lebanon	13.3	14.2	97	97	75	...	80	141	29.1
9	Libyan A.J.	7	14.3
10	Mauritania	82	83	...	5.6	...	38	44.7
11	Morocco	83	82	293	15.7
12	Oman	11.1	11.2	1
13	Palestinian O.T.	12.6	13.6	87	0.9	77	85	42.4
14	Qatar	11.9	14.8	79	...	61
15	Saudi Arabia	13.8	13.1	97	94	...	1.5	81
16	Sudan	94	100	...	3.8	...	63	68.3
17	Syrian A.R.	68	10.5	...	83	3.6
18	Tunisia	14	15	96	96	78	130	3.1
19	United Arab Emirates	100	100
20	Yemen	78	78.2
South West Asia										
21	Afghanistan	2.4	...	233	57.5
22	Bangladesh	...	8.3	55	58	217	76.5
23	Bhutan	...	11	96	99	45	0.8	61	24	58.3
24	India	...	9.8	66	65	...	10.2	...	508	61.4
25	Iran, I.R.	...	15.2	69	61	1.6
26	Maldives	...	12.3	94	93	...	0.7	...	8	12.5
27	Nepal	62	64	...	3.7	...	91	76.9
28	Pakistan	...	6	33	...	42	128	68.8
29	Sri Lanka	98	98	51	23.5
Central and Eastern Europe										
30	Albania	0.6	...	66	6.1
31	Belarus	...	15	34.8	...	22	4.5
32	Bosnia & Herzegovina	29.7	...	43	11.6
33	Bulgaria	...	14	83	38.2	78
34	Croatia	...	14	89	38.6	80	22	4.5
35	Czech Rep.	...	16	99	99	...	17.9	86
36	Estonia	...	17	99	98	89	14.2	89
37	Hungary	...	16	91	19.7	90
38	Latvia	...	17	96	95	85	9.8	88
39	Lithuania	...	17	92	...	92
40	Moldova, Rep.	...	13	83	33.9	71	29	27.6
41	Montenegro	24.5	...	5	40
42	Poland	...	16	98	...	94	11	88
43	Romania	...	15	80	6.7	85
44	Russian Fed.	...	15	36	84
45	Serbia	...	14	90	34.9	78	62	21
46	Slovakia	...	16	36.7	81
47	Slovenia	...	18	91	27.9	94

Table S7 (continued)

S. No.	Country/Region	School Life Expectancy (Expected Number of Years of Formal Schooling from Primary to Tertiary Education) 2008		Survival Rate to Grade 5 (Primary Education)		NER in Second- ary Education	Enrolment in Technical Education (as % of Total Secondary Enrolment)	GER Combined (Pri+Sec+ Ter)	Total Aid to Educa- tion Constant 2008 Prices US\$ millions	Share of Basic Education in Total Aid to Education (%)	
				Total	Female						Total
				2007							2008
		Male	Female								
48	Macedonia	...	12	2.6	72	32	46.9	
49	Turkey	...	11	94	94	74	8.1	74	143	13.3	
50	Ukraine	...	15	85	1	91	79	3.8	
	Central Asia										
51	Armenia	13.6	74	26	19.2	
52	Azerbaijan	...	15	92	0.7	70	11	18.2	
53	Georgia	95	6.2	75	84	34.5	
54	Kazakhstan	...	14	85	3	91	20	10	
55	Kyrgyzstan	...	14	80	9.1	77	22	36.4	
56	Mongolia	...	16	95	95	...	2.1	...	34	41.2	
57	Tajikistan	...	17	83	...	72	14	57.1	
58	Turkmenistan	...	16	26.6	...	3	0	
59	Uzbekistan	...	17	91	40.5	71	28	10.7	
	East Asia and Pacific										
60	Australia	...	21	88	6.4	115	
61	Brunei Darussalam	...	14	100	99	88	2.2	78	
62	Cambodia	...	9	62	65	...	18.6	...	42	50	
63	China	...	12	100	99	68	842	4.8	
64	Fiji	95	15	...	9	44.4	
65	Hong Kong (China)	75	...	83	
66	Indonesia	...	13	86	89	68	12.1	75	471	58.2	
67	Japan	...	15	98	...	88	
68	Kiribati	0.7	73	3	33.3	
69	Korea, D.P.R.	3	...	2	50	
70	Korea, Rep.	...	16	99	99	95	...	100	
71	Lao P.D.R.	...	9	67	68	...	2.6	59	41	41.5	
72	Malaysia	...	13	94	94	68	4	70	38	5.3	
73	Marshall Islands	14	50	
74	Micronesia	29	51.7	
75	Myanmar	74	...	49	29	69	
76	Nauru	...	9	56	1	100	
77	New Zealand	...	20	107	
78	Palau	3	66.7	
79	Papua New Guinea	40	57.5	
80	Philippines	...	12	77	81	61	12.3	80	69	43.5	
81	Samoa	11.7	...	6	16.7	
82	Singapore	
83	Solomon Islands	...	9	16.1	...	11	72.7	
84	Thailand	...	13	71	...	72	38	10.5	
85	Timor-Leste	28	53.6	
86	Tonga	92	92	7	28.6	
87	Tuvalu	2	0	
88	Vanuatu	82	83	...	6.4	...	14	35.7	
89	Vietnam	92	269	34.9	
	Latin America and the Caribbean										
90	Antigua & Barbuda	35.1	...	2	0	
91	Argentina	96	98	80	14.3	92	34	32.4	
92	Bahamas	92	93	85	
93	Barbados	96	3.2	...	1	0	

Annex III

Statistical Tables

Table S7 (continued)

S. No.	Country/Region	School Life Expectancy (Expected Number of Years of Formal Schooling from Primary to Tertiary Education) 2008		Survival Rate to Grade 5 (Primary Education)		NER in Second- ary Education	Enrolment in Technical Education (as % of Total Secondary Enrolment)	GER Combined (Pri+Sec+ Ter)	Total Aid to Educa- tion Constant 2008 Prices US\$ millions	Share of Basic Education in Total Aid to Education (%)
				Total	Female					
				Male	Female	2007		2008	2008	2008
94	Belize	93	93	1	0
95	Bolivia	83	83	69	4.8	...	82	57.3
96	Brazil	82	20	87	94	22.3
97	Chile	...	14.6	96	97	85	6.5	85	31	19.4
98	Colombia	88	...	71	15.5	83	58	25.9
99	Costa Rica	96	98	...	26.3	...	10	40
100	Cuba	96	96	84	1.4	104	9	22.2
101	Dominica	94	91	...	74.5	74	2	50
102	Dominican Republic	73	77	58	23.6	...	27	40.7
103	Ecuador	83	84	...	19.3	82	46	50
104	El Salvador	80	82	55	...	73	27	40.7
105	Grenada	89	28	...	4	75
106	Guatemala	71	70	40	6.7	...	47	63.8
107	Guyana	81	10	90
108	Haiti	46	...	51	54.9
109	Honduras	78	80	72	58	58.6
110	Jamaica	77	16.2	87	10	80
111	Mexico	94	95	72	...	82	56	16.1
112	Nicaragua	51	55	...	16.1	...	68	58.8
113	Panama	...	12.9	87	88	66	9.6	79	4	25
114	Paraguay	84	84	59	1.6	...	15	60
115	Peru	87	88	71	57	42.1
116	Saint Kitts & Nevis	82	82	89	1.3	76	4	50
117	Saint Lucia	97	99	75	3	66.7
118	Saint Vincent & the Grenadines	90	47.9	...	4	50
119	Suriname	80	81	6	33.3
120	Trinidad and Tobago	98	99	1	0
121	Uruguay	...	15	94	96	70	5.6	90	8	25
122	Venezuela	...	13.1	84	87	69	7.5	89	14	14.3
North America and Western Europe										
123	Andorra	...	10.8	98	97	70	38.9	67
124	Austria	...	15	38.4	90
125	Belgium	...	15.7	91	92	94
126	Canada	6.2
127	Cyprus	...	14.2	99	100	96	26.5	81
128	Denmark	...	16.2	90	29.5	101
129	Finland	...	16	96	20	101
130	France	...	15.8	98	22	95
131	Germany	16
132	Greece	...	16.4	98	98	...	20
133	Iceland	...	17.1	94	...	90	16.7	97
134	Ireland	...	17.7	88	20.3	100
135	Israel	...	14.9	86	37.1	90
136	Italy	...	15.8	100	100	95	30.8	92
137	Liechtenstein	66	...	72
138	Luxembourg	...	13.2	98	100	84	16.2
139	Malta	...	14	80	20	79
140	Monaco	46.9

Table S7 (continued)

S. No.	Country/Region	School Life Expectancy (Expected Number of Years of Formal Schooling from Primary to Tertiary Education) 2008		Survival Rate to Grade 5 (Primary Education)		NER in Second- ary Education	Enrolment in Technical Education (as % of Total Secondary Enrolment)	GER Combined (Pri+Sec+ Ter)	Total Aid to Educa- tion Constant 2008 Prices US\$ millions	Share of Basic Education in Total Aid to Education (%)	
				Total	Female						Total
				2007							2008
141	Netherlands	...	16.7	100	100	88	31.1	98	
142	Norway	...	16.7	96	18.4	97	
143	Portugal	...	15.2	25	94	
144	San Marino	16.3	
145	Spain	...	15.9	95	30.5	99	
146	Sweden	...	14.9	99	32.9	92	
147	Switzerland	...	15.6	85	13.4	86	
148	United Kingdom	...	15.6	93	...	89	
149	United States of America	...	15.1	88	0.7	93	
Sub-Saharan Africa											
150	Angola	36	52.8	
151	Benin	6.3	...	74	55.4	
152	Botswana	...	12.3	89	89	...	5.6	...	17	35.3	
153	Burkina Faso	...	6.8	82	83	14	5.3	37	150	68	
154	Burundi	62	65	...	18.9	55	40	45	
155	Cameroon	...	10.6	63	63	57	143	19.6	
156	Cape Verde	91	92	62	4.3	...	38	7.9	
157	Central African Re- public	...	7.8	53	48	10	1.3	38	7	28.6	
158	Chad	38	34	43	17	52.9	
159	Comoros	15	26.7	
160	Congo	77	80	26	26.9	
161	Congo, D.R.	80	51	
162	Cote d'Ivoire	94	19.2	...	35	20	
163	Equatorial Guinea	0.9	...	4	50	
164	Eritrea	73	69	26	6.2	...	16	56.3	
165	Ethiopia	...	9	47	49	55	
166	Gabon	26	0	
167	Gambia	72	72	...	3.9	57	11	72.7	
168	Ghana	...	10	47	2.1	...	130	56.9	
169	Guinea	...	10	70	65	...	1.8	51	45	28.9	
170	Guinea-Bissau	1	...	16	50	
171	Kenya	49	111	61.3	
172	Lesotho	...	10.1	62	69	27	15	40	
173	Liberia	3.5	...	18	83.3	
174	Madagascar	...	10.4	42	43	24	...	66	98	46.9	
175	Malawi	...	9	43	43	25	13	...	81	64.2	
176	Mali	...	9.4	87	85	29	...	50	186	68.8	
177	Mauritius	...	13	99	100	...	5.7	76	36	33.3	
178	Mozambique	60	58	12	271	57.2	
179	Namibia	...	11.6	87	90	...	2	...	19	63.2	
180	Niger	...	5.3	69	66	10	4.3	29	60	66.7	
181	Nigeria	104	38.5	
182	Rwanda	2	65	112	63.4	
183	São Tomé & Príncipe	...	10.7	79	75	...	5.9	67	8	12.5	
184	Senegal	...	7.8	71	72	46	169	37.9	
185	Seychelles	...	14.3	97	5	83	1	0	

Annex III

Statistical Tables

Table S7 (continued)

S. No.	Country/Region	School Life Expectancy (Expected Number of Years of Formal Schooling from Primary to Tertiary Education) 2008		Survival Rate to Grade 5 (Primary Education)		NER in Second- ary Education	Enrolment in Technical Education (as % of Total Secondary Enrolment)	GER Combined (Pri+Sec+ Ter)	Total Aid to Educa- tion Constant 2008 Prices US\$ millions	Share of Basic Education in Total Aid to Education (%)
				Total	Female					
		Male	Female	2007		2008	2008	2008	2008	2008
186	Sierra Leone	34	64.7
187	Somalia	19	89.5
188	South Africa	81	43.2
189	Swaziland	...	10.6	82	88	...	7.8	...	4	75
190	Tanzania	87	89	...	9	...	204	45.6
191	Togo	54	50	...	5	...	21	28.6
192	Uganda	...	10.6	59	59	21	...	66	139	57.6
193	Zambia	90	88	139	56.1
194	Zimbabwe	7.0	28.6

Table S7 Education Indicators (Continued)

Country/Region	School Life Expectancy (Expected Number of Years of Formal Schooling from Primary to Tertiary Education) 2008		Survival Rate to Grade 5 (Primary Education)		NER in Secondary Education	Enrolment in Technical Education (as % of Total Secondary Enrolment)	GER Combined (Pri+Sec+ Ter)	Total Aid to Education Constant 2008 Prices US\$ millions	Share of Basic Education in Total Aid to Education (%)
			Total	Female					
	Male	Female	2007		2008	2008	2008	2008	2008
Regions									
Arab States	12.1	12.7	94	94	73	5.9	75.8	1,580	35.7
South West Asia	10.9	10.8	76	75	42	6.4	65.5	4,873	42.6
Central & Eastern Europe	14.0	14.9	97	97	87	21.3	83.6	503	17.9
Central Asia	14.3	15.4	95	95	86	12.7	75.8	242	25.3
East Asia & Pacific	13.1	13.1	86	87	76	8.5	80.3	2,008	42.5
Latin America & the Caribbean	12.7	13.9	87	87	73	18.7	82.9	844	39.5
North America & Western Europe	15.4	16.3	97	98	89	23.9	90.8
Sub-Saharan Africa	10.0	9.3	71	70	32	5.8	55.1	2,783	46.0
WORLD	12.8	13.3	88	88	70	12.9	76.2	12,833	35.7