

Published 16 December 2010

JUNE CENSUS OF AGRICULTURE AND HORTICULTURE (LAND USE AND LIVESTOCK ON AGRICULTURAL HOLDINGS AT 1 JUNE 2010) UK – FINAL RESULTS

The latest National Statistics on United Kingdom agriculture and horticulture produced by Defra on behalf of the agriculture departments of the United Kingdom were released on 16 December 2010 according to the arrangements approved by the UK Statistics Authority. This release shows the final estimates of the 2010 June Survey of Agriculture and Horticulture carried out by each of the UK agriculture departments. It includes estimates for land use, crop areas and livestock populations. The key results for 2010 are given below.

Agricultural land areas (Tables 1 - 3)

The area of arable crops grown in the UK remained almost unchanged in 2010 at 4.4 million hectares. A little over 3 million hectares of this was used to grow cereal crops and oilseed crops account for a further 0.7 million hectares.

The most predominant crop grown in the UK is wheat which increased by 9% between 2009 and 2010. Figure 1 below shows the change in the wheat area by UK country. The most noticeable differences are the much larger increases in the wheat areas seen in Scotland and Wales compared to other countries, though these areas constitute a fairly small proportion of the UK area.

Horticultural crops (Tables 4 - 6)

Vegetables and salad grown for human consumption make up the largest proportion of the UK's horticultural area at 121 thousand hectares, a decrease of 3% on 2009. The 7% increase seen in the total area of fruit offset this decrease and left the total area of horticultural crops almost unchanged at 169 thousand hectares.

Livestock (Tables 7 - 11)

In 2010 the total number of cattle and calves increased by 1% to 10.1 million. The numbers of pigs and sheep both decreased and now stand at 4.5 and 31.1 million animals respectively. The total number of poultry was 164 million in 2010, which amounts to a 7% rise. The changes in the livestock numbers between 2009 and 2010 have been largely consistent across each of the UK countries with the exception of a 21% increase seen in the number of pigs in Wales.

Figure 1: Percentage changes by UK country

	UK % change	England % change	Scotland % change	N. Ireland % change	Wales % change
Wheat	9%	8%	20%	8%	24%
Potatoes	-4%	-5%	-1%	-3%	-19%
Pigs	-2%	-2%	3%	-4%	21%
Sheep	-1%	-1%	-2%	-3%	0%
Cattle	1%	1%	1%	0%	1%

Enquiries on this publication to Farming Statistics, Department for Environment, Food and Rural Affairs. Tel: 01904 455332, email: farming-statistics@defra.gsi.gov.uk.

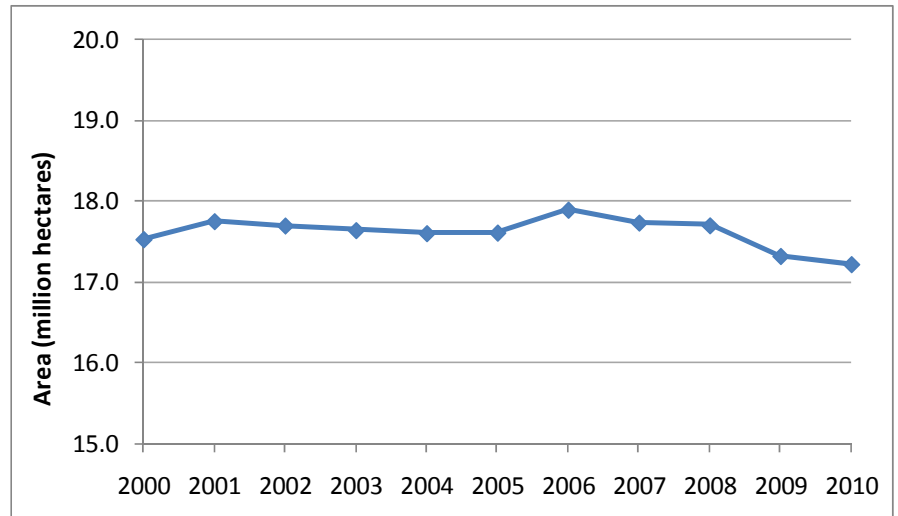
A National Statistics publication. National Statistics are produced to high professional standards. They undergo regular quality assurance reviews to ensure that they meet customer needs. They are produced free from any political interference. For general enquiries about National Statistics, contact the National Statistics Public Enquiry Service: tel. 0845 601 3034 email info@statistics.gov.uk. You can find National Statistics on the internet at www.statistics.gov.uk.

Detailed Results

Utilised agricultural area

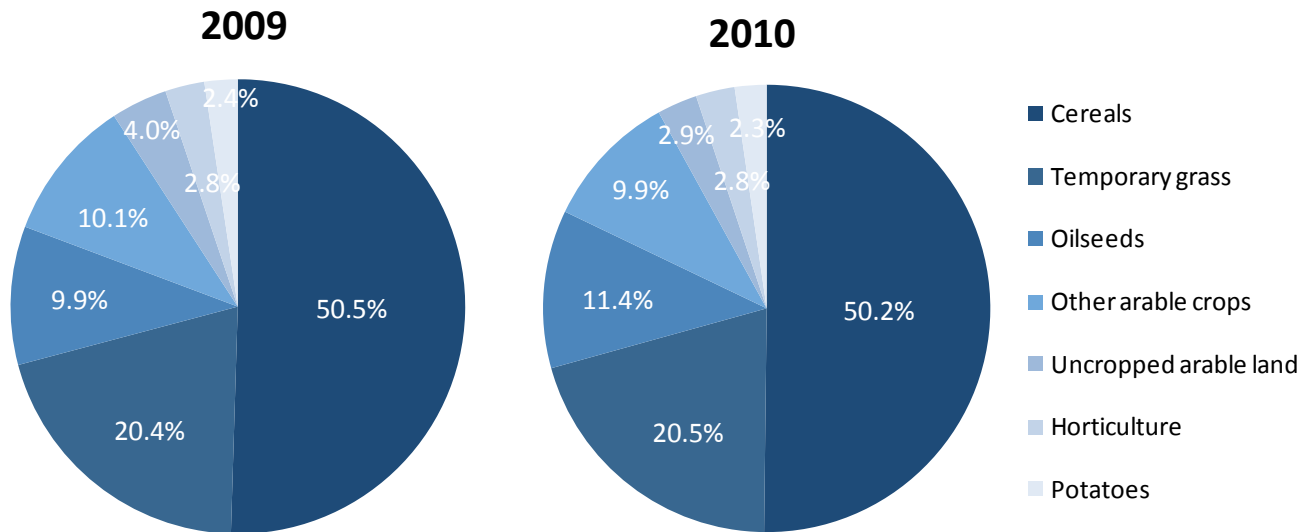
The utilised agricultural area is made up of all arable and horticultural crops, uncropped arable land, land used for outdoor pigs, temporary and permanent grassland and common rough grazing. The total utilised agricultural area in the UK is almost 17.2 million hectares at 1 June 2010. This is a small reduction of 0.6% on the same period in 2009. Figure 2 shows that the total utilised agricultural area in the UK has been fairly stable over the past 10 years.

Figure 2: Total utilised agricultural area in the UK at 1 June 2000 to 2010



Croppable area

Figure 3: Total croppable area at 1 June 2010 compared to 2009



The total area of land on agricultural holdings in the UK is 17.0 million hectares as at 1 June 2010 and 6.0 million hectares of this makes up the croppable UK area. Croppable land is defined as land currently under crops, bare fallow, temporary grass or horticulture.

Figure 3 above shows that half of the croppable area is used to grow cereal crops, as was the case in 2009. The proportion of croppable land taken by temporary grass and other arable crops was stable in 2010. The total area of land that was cropped in 2010 remained almost unchanged since 2009 at 4.6 million hectares.

The June Census 2010 estimate of the area of uncropped arable land is 174 thousand hectares, a large decrease (29%) since the 2009 estimate. This decrease brings the area broadly back into line with the 2008 level as the increase in 2009 was largely due to the difficult autumn 2008 planting conditions and the lower cereal prices.

Cereals and Oilseeds

The total area of oilseed crops saw a large increase of 14% between June 2009 and June 2010, rising from 600 to 686 thousand hectares due to good autumn planting conditions. The largest increase was seen in the area of oilseed rape which increased by 72 thousand hectares. The area of linseed also saw a large increase (58%) in 2010 and now stands at 44 thousand hectares.

In 2010 the area of cereal crops decreased by 2.0% to 3.0 million hectares. The largest drop was seen in the area of barley due to a combination of high stocks and low prices at time of planting. This led to a 27% decrease in the area of spring barley and a 5.1% decrease in winter barley area.

In contrast to the reduction in barley the area of wheat in the UK increased by 9.2% from just under 1.8 million hectares in 2009 to 1.9 million hectares in 2010. This increase was largely due to the 8.4% increase seen in the English area of wheat, which amounts to an additional 139 thousand hectares. The increased area is in part due to the more favourable autumn planting conditions compared with the previous year. Scotland, Wales and Northern Ireland also had larger wheat areas in 2010 compared with 2009 with increases of 20%, 24% and 8% respectively.

Pigs

The total number of pigs in the UK fell by 1.8% in 2010 to just under 4.5 million. Although the number of fattening pigs fell by 2.3%, the number of breeding pigs saw an increase of 2.2% to 518 thousand in 2010.

Figure 4: Breeding pigs by category

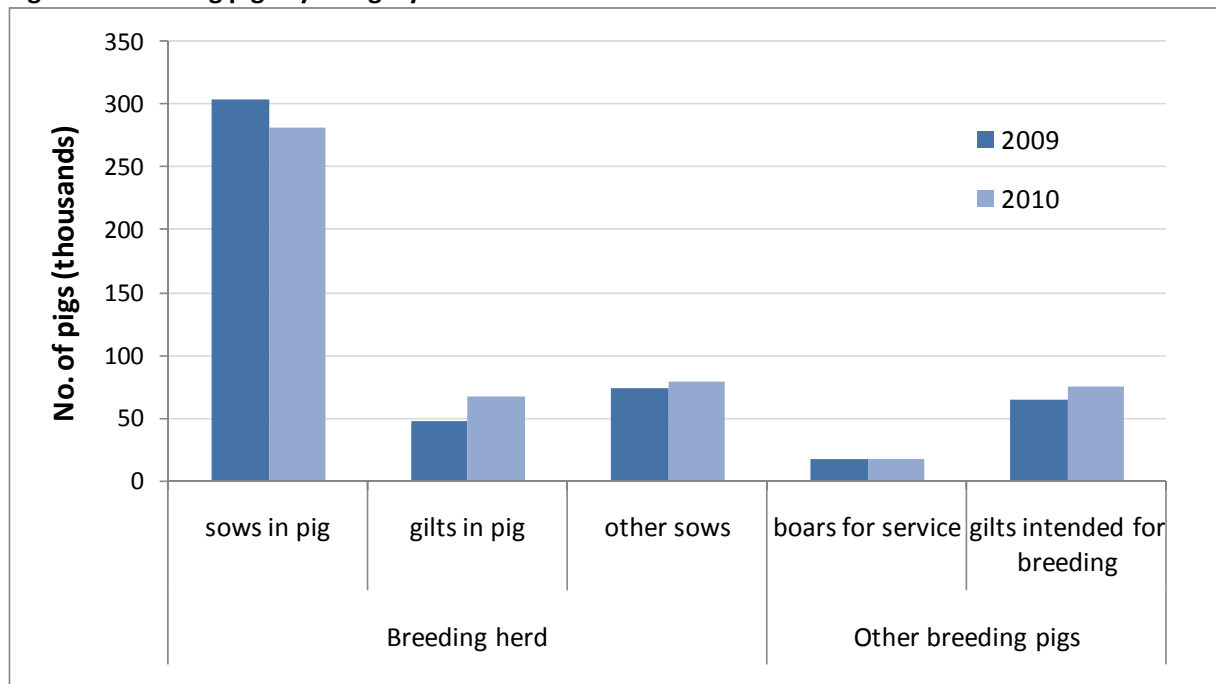


Figure 4 shows the breeding pigs by category in 2010 compared to 2009. The largest increases were seen in the number of gilts in pig and the number of gilts intended for breeding, which rose by 19 thousand and 11 thousand animals respectively.

Cattle

The total number of cattle and calves in the UK increased by 0.9% from 10.0 million in 2009 to 10.1 million in 2010. Approximately 72% of total cattle are female. The majority of these female cattle are 2 years or older with almost 4.4 million cattle falling into this age range. Of these, 3.5 million cattle make up the female breeding herd, which remained almost unchanged since June 2009. The breeding herd consists of 1.7 million animals in the beef herd and 1.8 million animals in the dairy herd.

Sheep

Sheep numbers decreased in 2010 and the total figure now stands at just over 31 million animals. The largest decrease was in the number of lambs, which fell by 2.9% to 15.4 million. The breeding flock however showed a small increase of 0.7% which may indicate some optimism in the sector. This increase was due to the 8.7% increase in the number of ewes intended for first time breeding, which rose to 2.2 million in 2010.

Poultry

Total poultry numbers have increased by 7.3% in 2010 to just under 164 million birds. The largest increases were seen in the total laying and breeding fowl which rose by 10.4% to 47 million, and table chickens which rose by 6.6% to over 105 million. The number of turkeys however dropped from 4.4 million to 3.9 million due to a long-term reduction in turkey sales.

Comparisons to other EU countries

Data on livestock populations is collected each year under EU Regulation 1165/2008 (cattle, pigs and sheep) and 543/2009 (crops and land). Therefore, results can be compared across EU Member States. Data is available to search and download on the Eurostat website at http://epp.eurostat.ec.europa.eu/portal/page/portal/agriculture/data/main_tables.

According to the latest data from 2009, the UK is the 7th largest cereal producer, the largest producer of sheep and the 3rd largest producer of cattle of the EU 27 Member States. Figures 5 to 7 below show the comparison of these activities across all Member States.

Figure 5: Cereal areas in 2009 by EU Member State

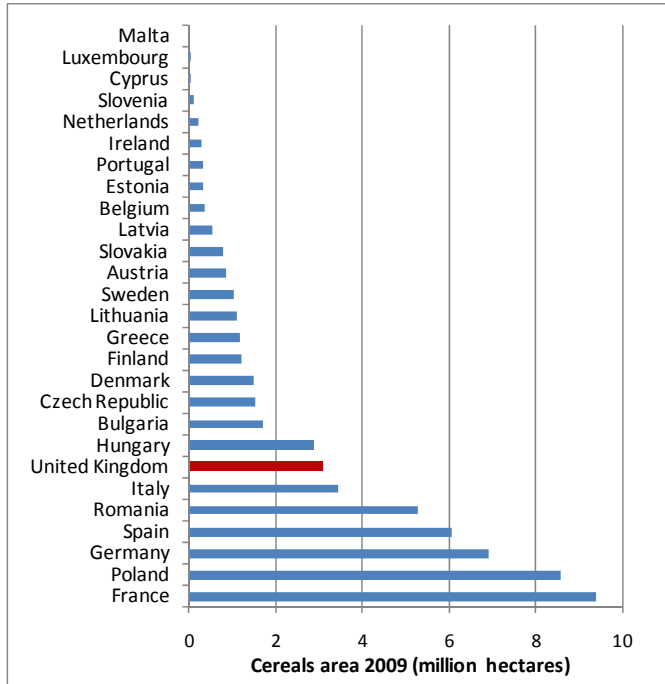
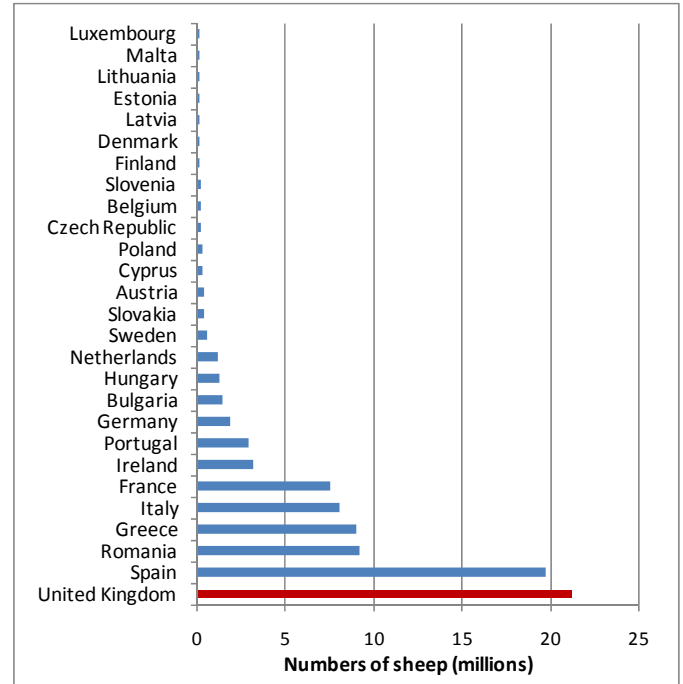
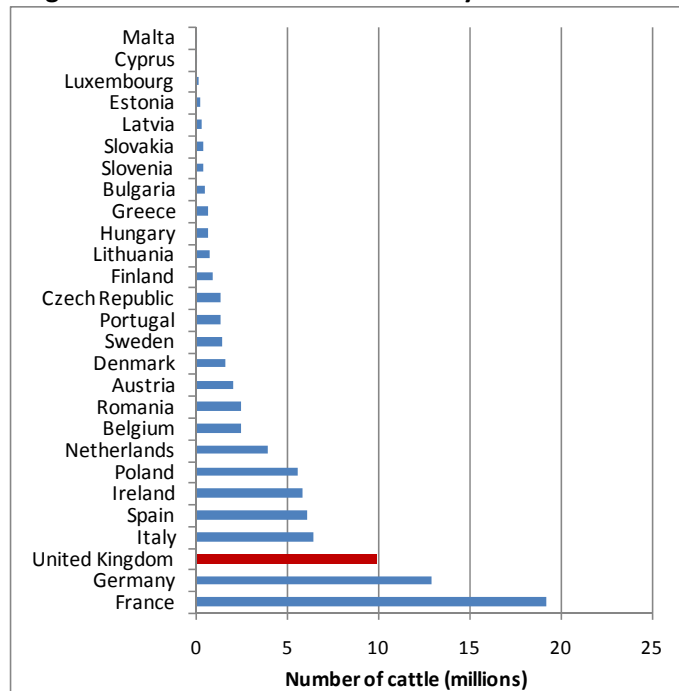


Figure 6: Number of sheep in 2009 by EU Member State



(data in figure 6 refers to December 2009, not June 2009)

Figure 7: Numbers of cattle in 2009 by EU Member State



Source: Eurostat

Survey methodology by country

England

England results are from the June Census of Agriculture and Horticulture in 2010. This is carried out under EU legislation once every ten years to capture detailed information about the structure of the agricultural industry. In other years, we run smaller sample surveys to provide annual updates and a long running time series.

The survey is postal, though farmers are given the option to complete the survey on-line via the Defra Whole Farm Approach website. In 2010, we received around 10% of responses via this route.

The survey questionnaire was sent to all 127,000 holdings above a threshold which defines “commercial” levels of farming activity (discussed in the next section). We received responses from 73% of the agricultural population and estimates were made for the remainder.

To maximise response rate, we sent out two sets of reminder postcards at fortnightly intervals following survey day (1 June) and a third reminder targeted at particularly important non-responding holdings (with either previous high levels of activity or from specialist sectors such as horticulture where a small number of non-responses can cause greater unreliability in the results).

Thresholds

Holdings were only surveyed where they had previously recorded “commercial” levels of farming activity (on their latest June survey response). In this instance, we have defined “commercial” by the thresholds specified in EU Farm Structure Survey Regulation EC 1166/2008. This means any holding with more than five hectares of agricultural land, one hectare of orchards, 0.5 hectares of vegetables or 0.1 hectares of protected crops, or more than 10 cows, 50 pigs, 20 sheep, 20 goats or 1,000 poultry.

This change in methodology came into effect this year (2010) and will be applied to all our future farm surveys. It offers many benefits in reducing the administrative burden on the smallest holdings, shows a clearer picture of the trends in commercial farming structures over time and reduces costs to government of sending survey forms to these holdings.

Over 40% of registered holdings in England have activity below these thresholds. Removing them from the analysis has only a very small effect for crops, sheep, pigs etc. (less than 1% of national totals are excluded).

Revisions to 2009 survey results

The 2010 Census provided a good opportunity to ensure our statistical register of agricultural holdings is up to date and accurate. We identified a large number of holdings with whom we have not had contact for a number of years and do not appear recently on any other Defra administrative system. This suggests these holdings are very small, inactive or in non-agricultural use and so we have removed them from the register and, as these holdings have been inactive for a number of years, adjusted the 2009 June Survey results to reflect this.

Final results from the England 2010 June Census were published on 9 December 2010 and can be viewed on our website via the following link: <http://www.defra.gov.uk/evidence/statistics/foodfarm/index.htm>.

Scotland

Data collection

The June Agricultural Census is conducted annually by the Scottish Government's Rural and Environment Analytical Services Division (REAS). Data for the June census is collected from two sources:

- Land data extracted from the Single Application Form (SAF) database for around 25,000 holdings that are claiming Single Farm Payment (SFP). This data is accurate as farmers can face penalties for supplying incorrect data. A cut-down survey form is sent to these holdings so that additional data on livestock and labour can be collected.
- The remaining 12,000 holdings that needed to be surveyed in 2010 were sent a full census form covering land, livestock and labour.

There are around 52,000 agricultural holdings in Scotland. In 2010 a total of 34,400 holdings were considered to be 'in-scope' (i.e. within the inclusion threshold for the Farm Structure Survey specified by the EU) and were sent a survey form (either a full or cut-down form). Results in this release are based on the 23,300 census forms that were returned and the information collated via the SAF database.

This equates to an overall response rate of 68%, broken down as follows:

- For holdings that received a full census form (i.e. those holdings where we collected full data through the June census) the response rate was 55%.
- By contrast, the response rate for holdings that received a reduced census form (i.e. those holdings where we collected land data through the SAF database) was 74%. These are the holdings that generally cover a larger proportion of overall agricultural activity.

Please note that the rates quoted here relate to the number of survey forms received, as a proportion of total forms issued. This masks the fact that we effectively receive 100% response for land items that are extracted from the SAF database as detailed above. Therefore, although the overall response rate of 68% may seem low, we can in fact be very confident about the accuracy of the majority of the land data that is supplied to us which also covers the bulk of the larger (by activity) agricultural holdings in Scotland.

Use of administrative data from the Single Application Form

In 2009, for the first time, data on land use was obtained from the **Single Application Form** (SAF) for 24,700 holdings claiming Single Farm Payments. This data was combined with land use data from all the other holdings, collected through June Census forms, to generate overall 2009 June Census results. This development led to a substantial reduction in statistical data collection and an overall improvement in the quality of land use statistics.

While the new method of incorporating SAF data is believed to be more accurate than the previous method it has resulted in a **step change** in some of the land use results for 2009, especially for **rough grazing and grass**. This means that trends between 2008 and 2009 for these land use categories do not represent genuine changes in land use, but do represent differences in the way this data has been reported between 2008 June Census and 2009 SAF. These trends should be treated with caution.

Final results for Scotland were published on 16 December 2010 by the **Scottish Government Rural and Environment Research and Analysis Directorate** and are available at:

<http://www.scotland.gov.uk/Topics/Statistics/Browse/Agriculture-Fisheries/PubFinalResultsJuneCensus>.

Contact details - Saughton House (Q Spur), Broomhouse Drive, Edinburgh, EH11 3XD (telephone: 0300 244 9723, email: agric.stats@scotland.gsi.gov.uk).

Wales

The Welsh population currently stands at around 39,000 holdings. All holdings above the prescribed EU thresholds were included in the 2010 survey and this amounted to approximately 22,300 holdings. To date returns have been received from 64.5% of these.

Final results for Wales were published by the Welsh Assembly Government on 17 November 2010 at: www.wales.gov.uk/statistics. For further details contact the Statistical Directorate 6, Welsh Assembly Government, Cathays Park, Cardiff, CF1 3NQ (telephone: Cardiff (02920) 825082).

Northern Ireland

In 2010 the Northern Ireland Agricultural and Horticultural Survey was conducted as a full census. A total of 27,516 forms were sent out and final results were based on 20,008 returned forms (72.7%). Data for the cattle section is a complete census coming from the APHIS extraction. Data for poultry is taken from the Update of the Bird Register 2010. Final results were published on 30 November 2010 by the Department of Agriculture and Rural Development for Northern Ireland, Dundonald House, Belfast, BT4 3SB (telephone: Belfast (02890) 524850) and are available on the internet at:

<http://www.dardni.gov.uk/index/news/press-releases-statistical/press-release-statistical-current.htm>.

Data uses

Livestock

- Census data helps us monitor changes in livestock populations over time and the effects of e.g. CAP reform on the industry.
- The numbers are also used to make forecasts of meat and milk production to inform industry of the availability of supply which affects prices.
- Livestock distributions across the UK help assess the risk of veterinary disease and to control outbreaks.
- The data is also used heavily in calculations of the greenhouse gas and ammonia emissions inventories.



Land

- Data on crop areas (both arable and horticultural) helps us monitor the long term trends in cropping. Amongst many other things, this helps us assess the impacts of the abolition of formal set-aside.
- The data will enable us to assess how land areas vary across the UK regions and in different geographic areas (such as the Uplands, National Parks, River Basin Districts).
- The crop areas, combined with yield data, provide harvest estimates which are heavily used by the cereals industry to monitor the availability of grain throughout the year.
- Any changes in the agricultural sector also affect people. For many, it is their livelihood and for all farmers, it is a way of life. We also use the data to estimate the numbers of tenant farmers so we know the impacts of any changes in their sector.



Table 1: Summary of land use on agricultural holdings

Thousand hectares

	2009 published	2009 revised ^(a)	2010	% change 2010/2009 ^(b)
Utilised agricultural area ^(c)	17 709	17 325	17 223	-0.6
Total agricultural area	18 752	18 296	18 272	-0.1
Common rough grazing	1 237	1 237	1 228	-0.7
Total area on agricultural holdings	17 515	17 060	17 043	-0.1
Total croppable area	6 214	6 092	6 005	-1.4
Total crops	4 697	4 607	4 600	-0.2
Arable crops	4 523	4 437	4 431	-0.1
Cereals	3 133	3 076	3 013	-2.0
Oilseeds	613	600	686	14.3
Potatoes	149	144	138	-4.2
Other crops	628	616	593	-3.8
Horticultural crops	174	170	169	-0.6
Uncropped arable land ^(d)	254	244	174	-28.9
Temporary grass under 5 years old	1 262	1 241	1 232	-0.8
Permanent grassland (incl. rough grazing)	10 259	9 996	9 980	-0.2
Grass over 5 years old	6 085	5 865	5 925	1.0
Sole right rough grazing ^(e)	4 174	4 131	4 055	-1.9
Other land on agricultural holdings	1 043	972	1 059	8.9
Woodland	779	726	774	6.7
Land used for outdoor pigs ^(f)	n/c	n/c	10	-
All other non-agricultural land	264	246	274	11.5

n/c: not collected

(a) 2009 results have been revised to be on a comparable basis with 2010. For more information please see the methodology and revisions sections on page 6.

(b) Compared to 2009 revised results.

(c) Includes all arable and horticultural crops, uncropped arable land, common rough grazing, temporary and permanent grassland and land used for outdoor pigs (excludes woodland and other land).

(d) Includes all arable land not in production, including GAEC12 land, game strips, wild bird cover and game cover.

(e) Classified as mountains, hills, heathland or moorland.

(f) Land used for outdoor pigs is a new category for England in 2010 and was previously included in 'All other land'.

Table 2: Areas of owned and rented land on agricultural holdings

Some of the UK countries do not collect data on owned/rented areas. So UK estimates are not available. Results for England can be found in the latest statistical release via the following link: <http://www.defra.gov.uk/evidence/statistics/foodfarm/index.htm>.

Table 3: Arable crops

Thousand hectares

	2009 published	2009 revised ^(a)	2010	% change 2010/2009 ^(b)
Total arable crops	4 523	4 437	4 431	-0.1
Cereals	3 133	3 076	3 013	-2.0
Wheat	1 814	1 775	1 939	9.2
Barley	1 160	1 143	921	-19.4
winter	411	403	383	-5.1
spring	749	740	539	-27.2
Oats	131	129	124	-3.6
Rye, mixed corn and triticale	28	28	29	2.6
Oilseed crops	613	600	686	14.3
Oilseed rape	581	570	642	12.6
winter	535	524	622	18.6
spring	47	46	20	-56.7
Linseed	29	28	44	57.8
Borage (England only)	3	3	1	-71.9
Potatoes	149	144	138	-4.2
Other (non-horticultural) crops	628	616	593	-3.8
Sugar beet (not for stock feeding)	116	114	118	3.7
Field beans	190	186	166	-10.4
Peas for harvesting dry	43	42	42	-1.9
Maize (incl. fodder and grain maize)	166	163	164	0.5
Root crops, brassicas and fodder beet for stock feeding	39	39	28	-27.0
Other crops for stock feeding	33	33	34	3.5
All other arable crops	40	39	40	2.8

(a) 2009 results have been revised to be on a comparable basis with 2010. For more information please see the methodology section on page 6.

(b) Compared to 2009 revised results.

Table 4: Fruit and vegetables grown in the open

Thousand hectares

	2009 published	2009 revised ^(a)	2010	% change 2010/2009 ^(b)
Total fruit and vegetables	160	157	155	-1.0
Orchards	24	22	24	7.7
Commercial orchards ^(c)	21	20	21	7.6
Non-commercial orchards	3	3	3	8.0
Small fruit ^{(d) (e)}	10	10	10	4.9
Strawberries	4	4	4	2.8
Other small fruit (inc. gooseberries and blackberries)	6	6	6	6.5
Vegetables and salad for human consumption ^{(d) (f)}	126	125	121	-3.0
Peas and beans	44	43	34	-20.8
All other vegetables and salad	82	82	87	6.4

(a) 2009 results have been revised to be on a comparable basis with 2010. For more information please see the methodology section on page 6.

(b) Compared to 2009 revised results.

(c) This category includes areas classed as commercial orchards in England and Wales and the total orchard area for Scotland and Northern Ireland.

(d) Due to the small areas grown, some UK countries do not collect data on individual crops in this category. For these countries, the areas are included in this total estimate only. For this reason, the total estimate does not always sum to the component parts.

(e) Small fruit includes crops grown in Spanish tunnels.

(f) These figures relate to land usage on 1 June and are not necessarily good indicators of annual production as more than one crop may be obtained in each season, a crop may overlap two seasons, or may be planted after 1 June.

Table 5: Hardy nursery stock

Thousand hectares

	2009 published	2009 revised ^(a)	2010	% change 2010/2009 ^(b)
Total hardy nursery stock, bulbs and flowers ^(c)	12	11	12	4.2
Hardy nursery stock	6	6	6	6.8
Bulbs and flowers grown in the open	5	5	5	2.2

(a) 2009 results have been revised to be on a comparable basis with 2010. For more information please see the methodology section on page 6.

(b) Compared to 2009 revised results.

(c) Due to the small areas grown, some UK countries do not collect data on individual crops in this category. For these countries, the areas are included in this total estimate only. For this reason, the total estimate does not always sum to the component parts.

Table 6: Glasshouses and protected crops ^{(a) (b)}

	Hectares			
	2009 published	2009 revised ^(c)	2010	% change 2010/2009 ^(d)
Total glasshouse area on 1 June ^(e)	2 055	1 729	1 717	-0.7
Vegetables, salad and fruit	999	857	895	4.4
Flowers, foliage and other plants	713	615	591	-4.0
Not in use on 1 June	295	209	193	-7.3

(a) These figures relate to land usage on 1 June and are not necessarily good indicators of annual production as more than one crop may be obtained in each season, a crop may overlap two seasons, or may be planted after 1 June.

(b) "Glasshouse" includes any fixed or mobile structure high enough to walk through, which is glazed or clad with film, rigid plastics or other glass substitutes. It excludes lights, low plastic tunnels, French and Spanish tunnels. These are reported as crops grown in the open (Table 4).

(c) 2009 results have been revised to be on a comparable basis with 2010. For more information please see the methodology and revisions sections on page 6.

(d) Compared to 2009 revised results.

(e) Due to the small areas grown, some UK countries do not collected data on individual crops in this category. For these countries, the areas are included in this total estimate only. For this reason, the total estimate does not always sum to the component parts.

Table 7: Cattle and calves on agricultural holdings on 1 June ^(a)

	Thousands		
	2009	2010	% change 2010/2009
Total cattle and calves	10 025	10 112	0.9
All female cattle	7 206	7 250	0.6
Aged 2 years or more	4 307	4 350	1.0
Total breeding herd	3 482	3 503	0.6
- Beef herd	1 626	1 657	1.9
- Dairy herd	1 857	1 847	-0.5
Other female cattle	825	846	2.6
- Beef	424	451	6.4
- Dairy	401	395	-1.5
Aged between 1 and 2 years	1 404	1 406	0.1
- Beef	913	866	-5.2
- Dairy	491	540	10.0
Less than 1 year	1 495	1 495	-0.1
- Beef	975	969	-0.6
- Dairy	520	526	1.0
All male cattle	2 819	2 862	1.5
Aged 2 years or more	411	425	3.5
Aged between 1 and 2 years	1 070	1 071	0.1
Less than 1 year	1 339	1 366	2.0

(a) These figures have been sourced from the Cattle Tracing System (CTS) in England and Wales, the equivalent APHIS system in Northern Ireland and survey data in Scotland.

Table 8: Pigs on agricultural holdings on 1 June

Thousands

	2009 published	2009 revised ^(a)	2010	% change 2010/2009 ^(b)
Total pigs	4 724	4 540	4 460	-1.8
Breeding pigs	531	507	518	2.2
Female Breeding herd	445	426	427	0.1
Sows in pig	318	304	281	-7.7
Gilts in pig	50	48	67	39.5
Other sows ^(c)	78	74	79	6.9
Other Breeding pigs	85	81	91	13.0
Boars being used for service	19	17	17	0.0
Gilts intended for first time breeding	66	64	75	16.5
Fattening pigs (incl. barren sows)	4 194	4 033	3 942	-2.3

(a) 2009 results have been revised to be on a comparable basis with 2010. For more information please see the methodology section on page 6.

(b) Compared to 2009 revised results.

(c) Either being suckled or dry sows being kept for further breeding.

Table 9: Sheep and lambs on agricultural holdings on 1 June

Thousands

	2009 published	2009 revised ^(a)	2010	% change 2010/2009 ^(b)
Total sheep and lambs	32 038	31 445	31 084	-1.1
Female breeding flock	14 912	14 636	14 740	0.7
Ewes intended for further breeding or for slaughter	12 829	12 579	12 505	-0.6
Ewes intended for first time breeding	2 083	2 056	2 235	8.7
Other sheep and lambs	17 126	16 810	16 344	-2.8
Lambs under 1 years old	16 177	15 892	15 431	-2.9
Rams	374	368	362	-1.6
Other sheep 1 year and over	574	550	551	0.1

(a) 2009 results have been revised to be on a comparable basis with 2010. For more information please see the methodology section on page 6.

(b) Compared to 2009 revised results.

Table 10: Poultry on agricultural holdings on 1 June ^(a)

Thousands

	2009 published	2009 revised ^(b)	2010	% change 2010/2009 ^(c)
Total poultry	159 288	152 753	163 867	7.3
Total breeding and laying fowl	44 722	42 663	47 107	10.4
Table chickens (broilers)	102 759	98 754	105 309	6.6
Other poultry	11 807	11 335	11 451	1.0
Ducks	2 693	2 574	2 470	-4.1
Geese	134	117	123	5.2
Turkeys	4 552	4 426	3 892	-12.1
All other poultry	4 428	4 218	4 966	17.7

(a) Due to production cycles, subgroups within the poultry population are often volatile as the “point in time” nature of the June Survey can lead to large variations in the numbers in each category.

(b) 2009 results have been revised to be on a comparable basis with 2010. For more information please see the methodology section on page 6.

(c) Compared to 2009 revised results.

Table 11: Other livestock on agricultural holdings on 1 June

Thousands

	2009 published	2009 revised ^(a)	2010	% change 2010/2009 ^(b)
Goats	101	82	93	13.6
Farmed deer	35	31	31	-1.9
Horses	377	298	311	4.4
Camelids ^(c)	n/c	n/c	12	-
Any livestock not recorded elsewhere ^(c)	27	18	6	-65.6

n/c: not collected

(a) 2009 results have been revised to be on a comparable basis with 2010. For more information please see the methodology and revisions sections on page 6.

(b) Compared to 2009 revised results.

(c) Camelids were included in ‘any livestock not recorded elsewhere’ in England and Scotland up until 2010.

Table 12: Number of people working on agricultural holdings on 1 June

Labour figures are currently unavailable for Wales therefore UK estimates cannot be produced. Once the Welsh figures have been finalised the UK total will be published in early 2011. In the meantime if you would like figures for the other individual UK countries please follow the links given in the methodology sections on pages 6 to 8.