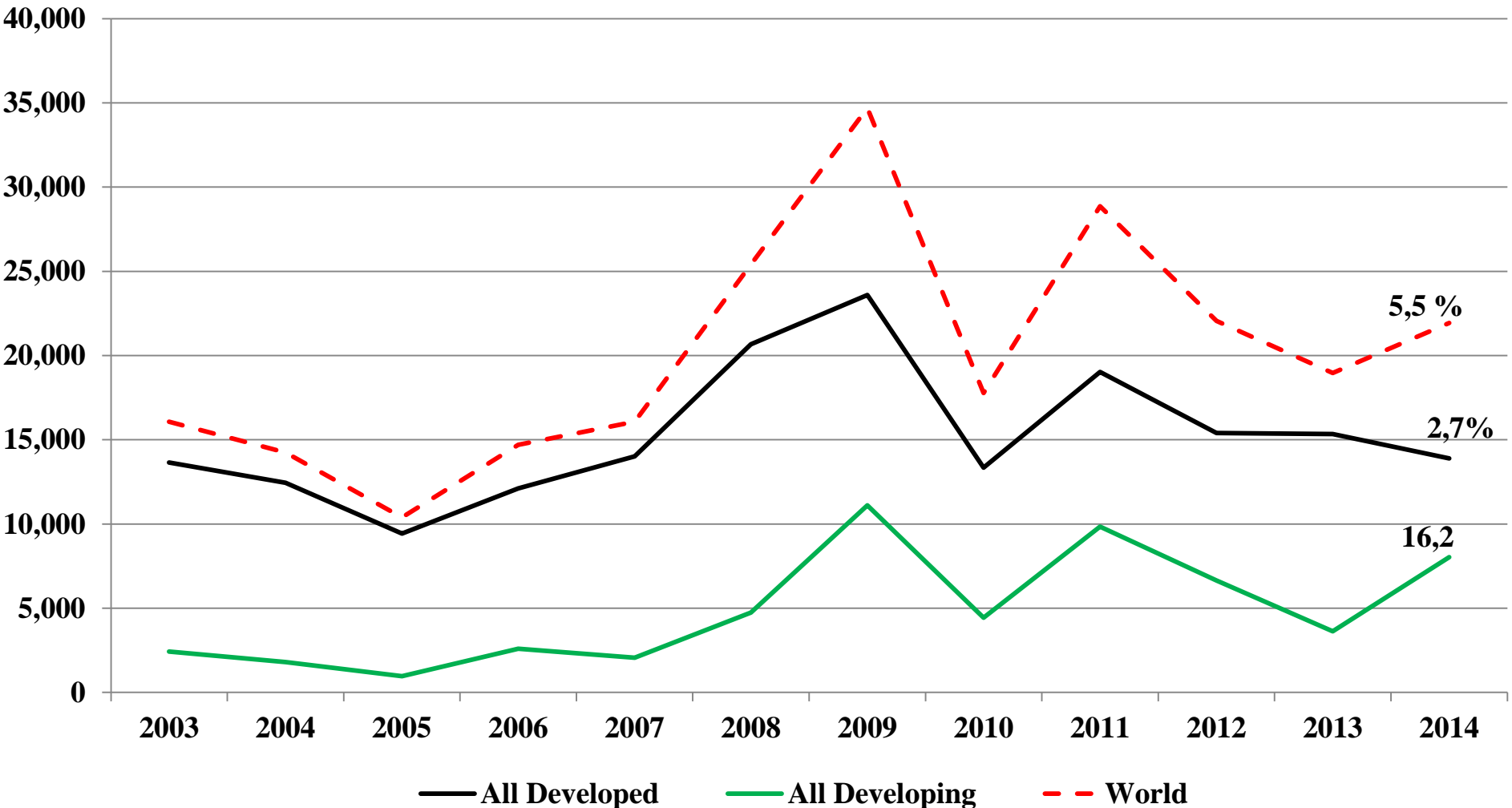


# **Trends in Foreign Direct Investment in the Food, Beverages and Tobacco Industries**

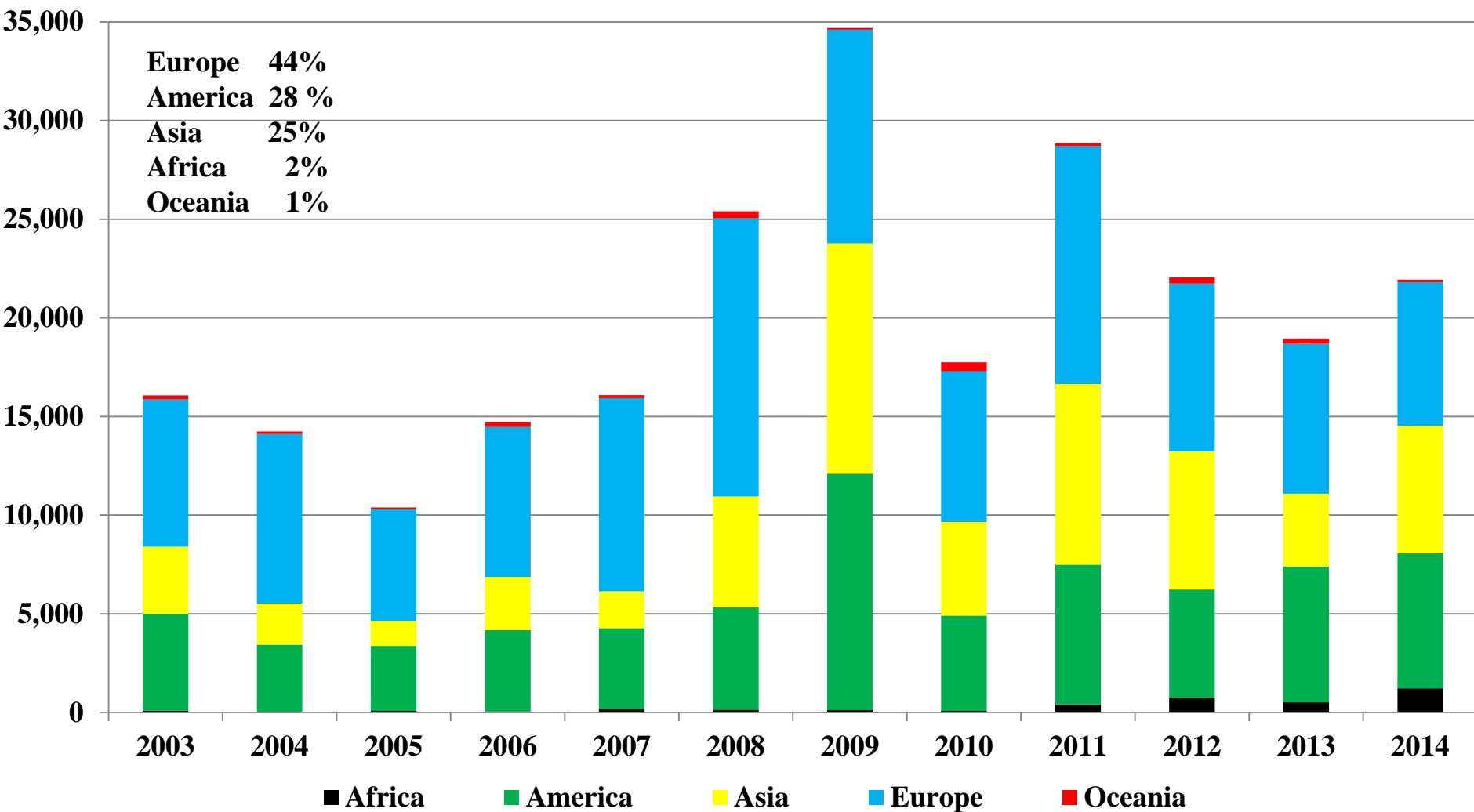
**2003-2014**

**by source and destination**

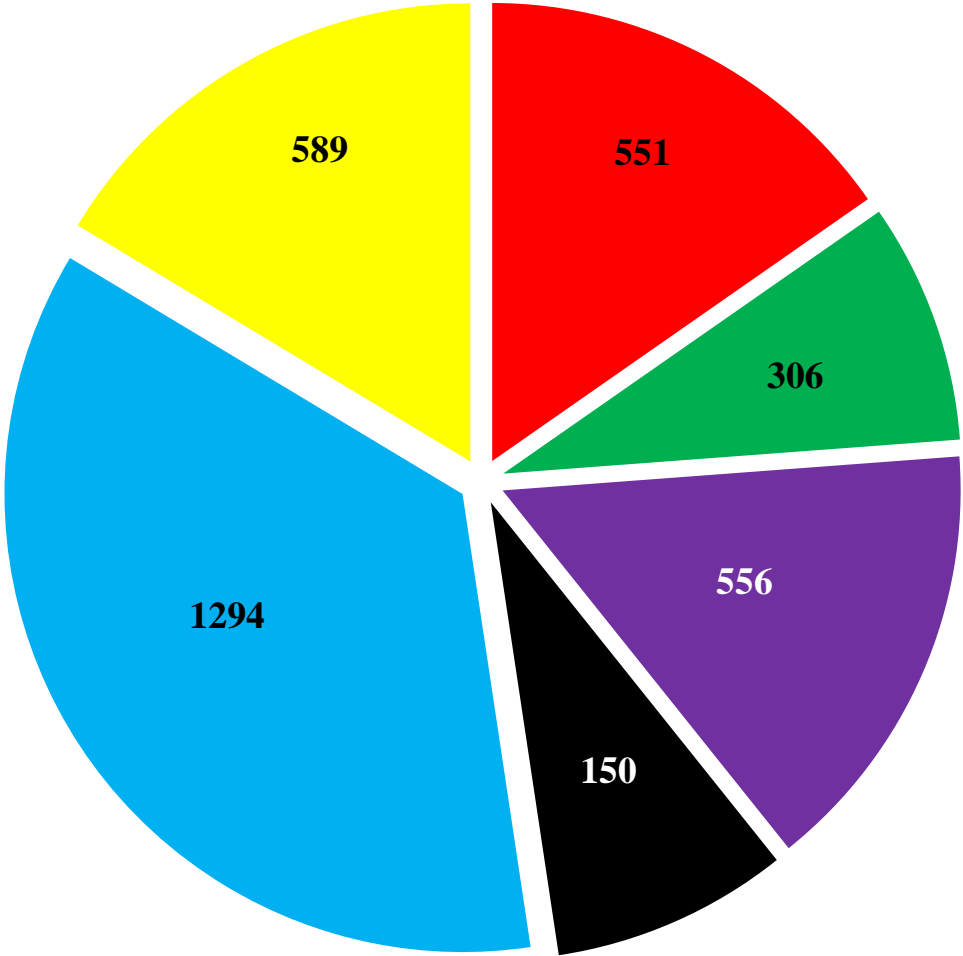
# Total Gross Foreign Direct Investment Outward Flows 2003-14: TRENDS (Million US \$)



# Total Gross Foreign Direct Investment Outward Flows, 2003-14: BY REGIONS ( Million US \$ )



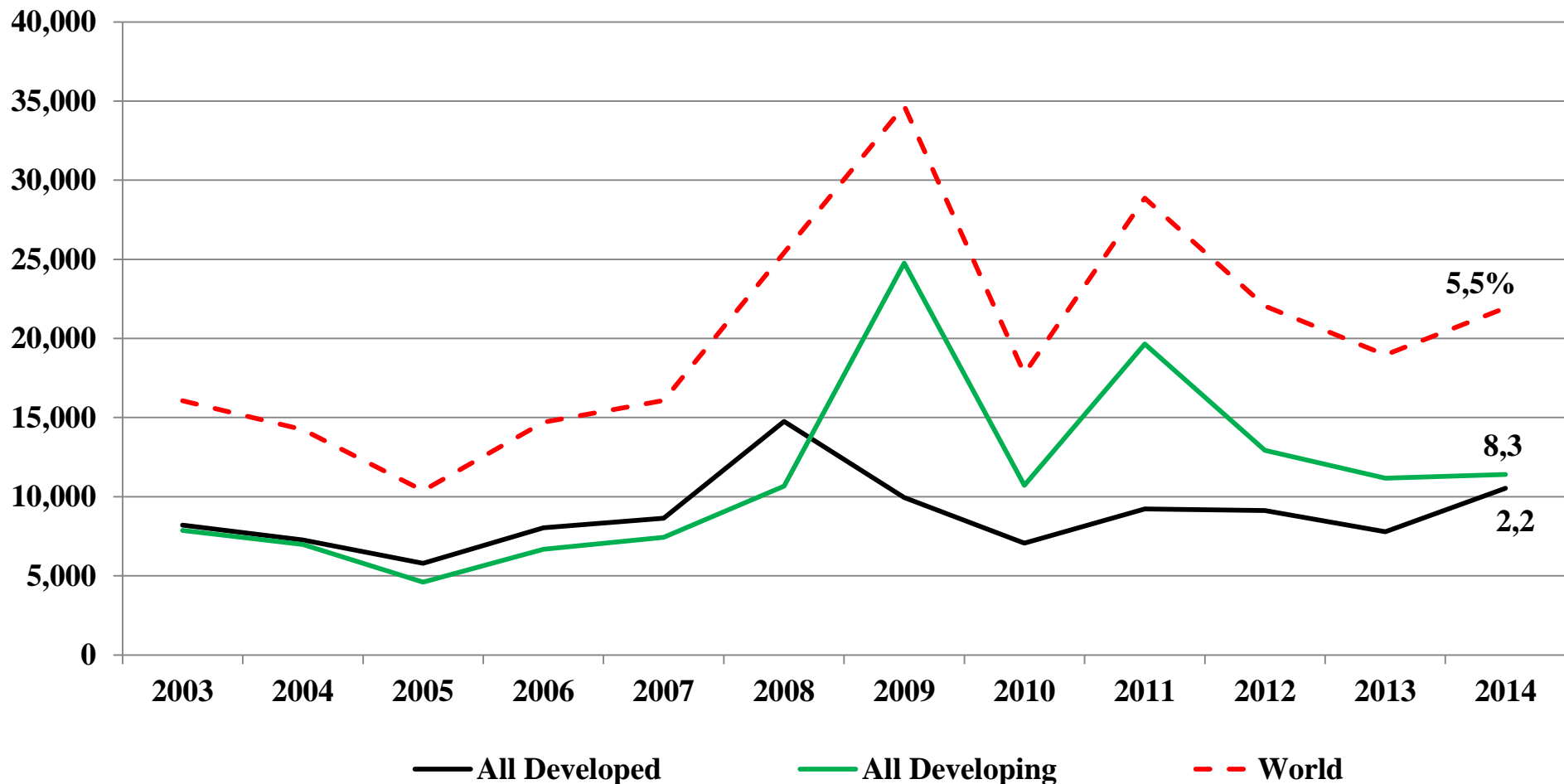
**AFRICA - Major investor countries during the period : 2003-14  
(Million US \$)**



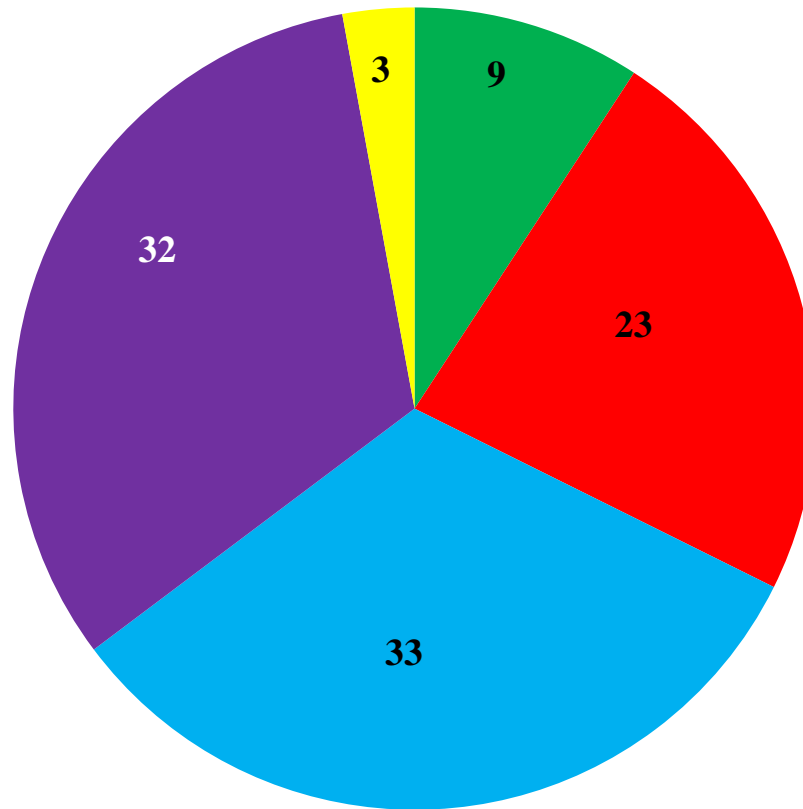
**Algeria   Mauritius   Zimbabwe   Ivory Coast   South Africa   Others**

Source : Fdi Markets, Apr.2015

# Total Gross Foreign Direct Investment Inward Flows 2003-14: TRENDS (Million US \$)

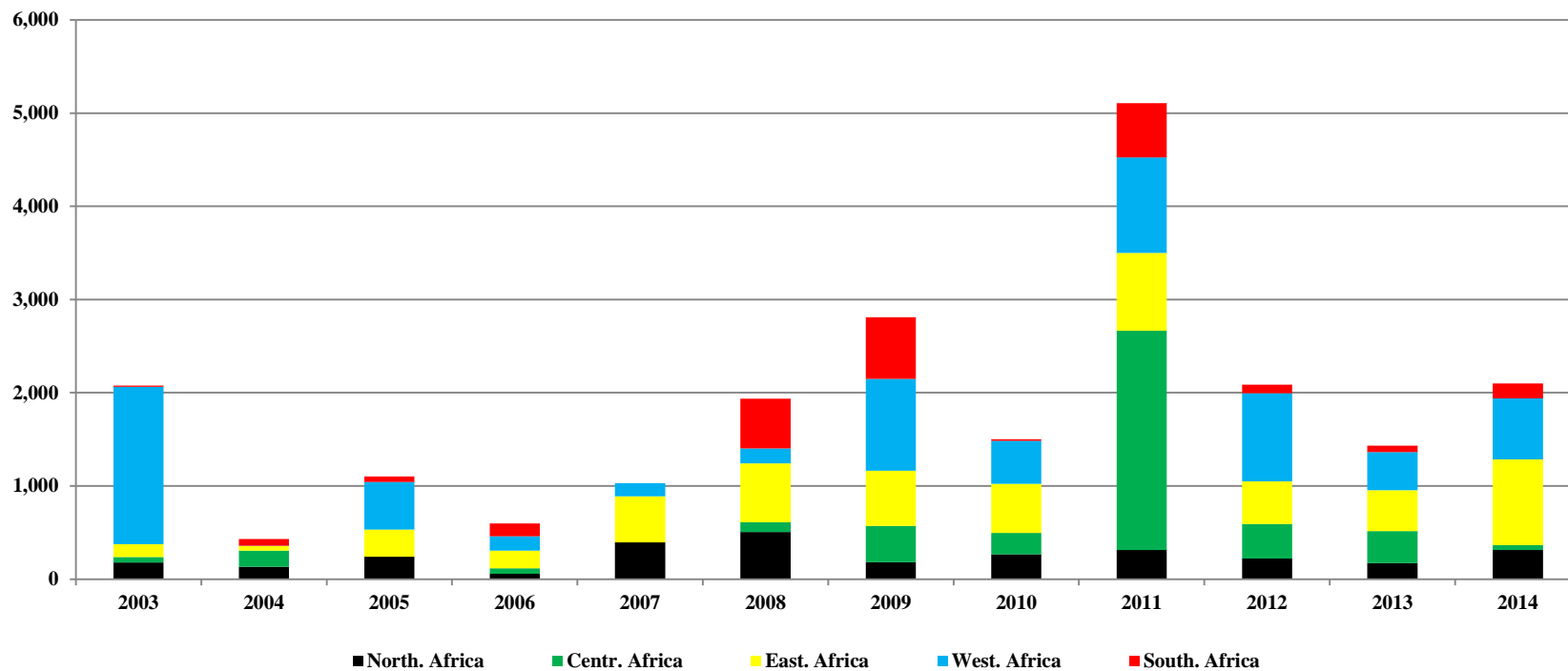


# Total Gross Foreign Direct Investment Inward Flows, BY REGIONS - CUMULATIVE 2003-14 in %



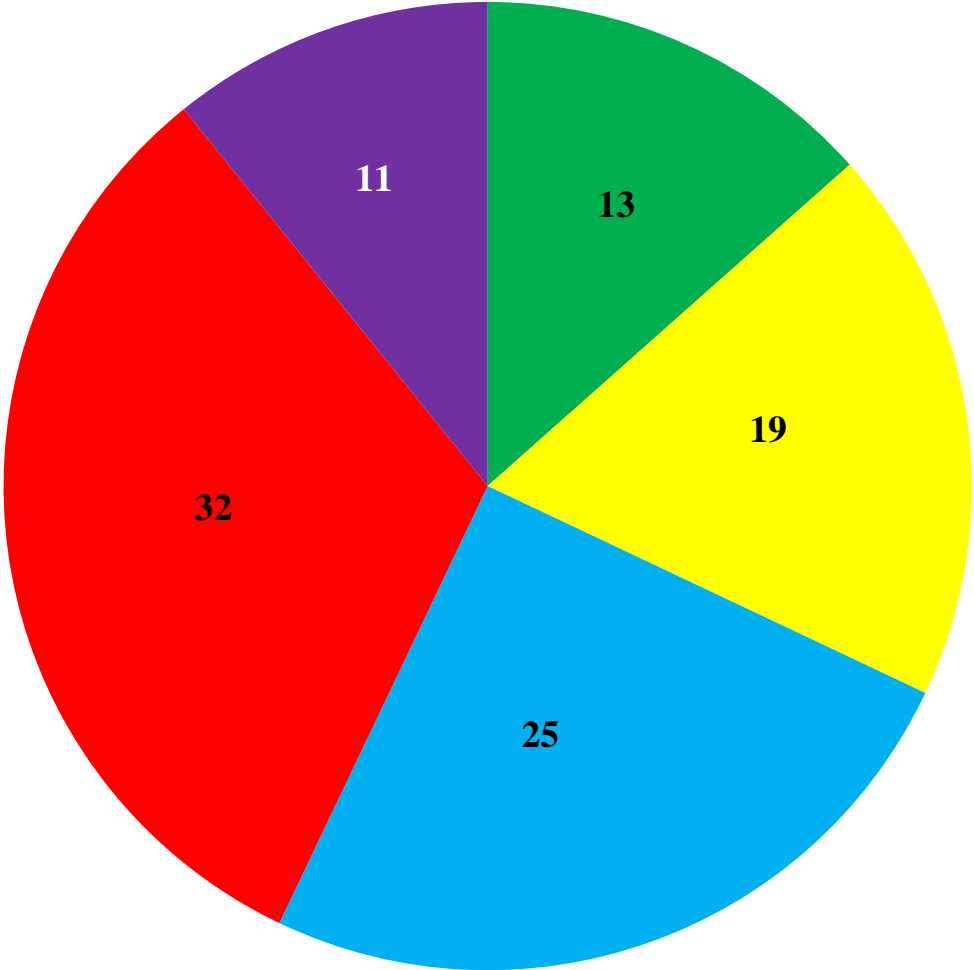
■ Africa ■ America ■ Asia ■ Europe ■ Oceania

## AFRICAN REGIONS : Gross Foreign Direct Investment Inward Flows, 2003-14 (Million US \$ )



Source : Fdi Markets, Apr.2015

# AFRICAN REGIONS : Gross Foreign Direct Investment Inward Flows, CUMULATIVE 2003-14 in %



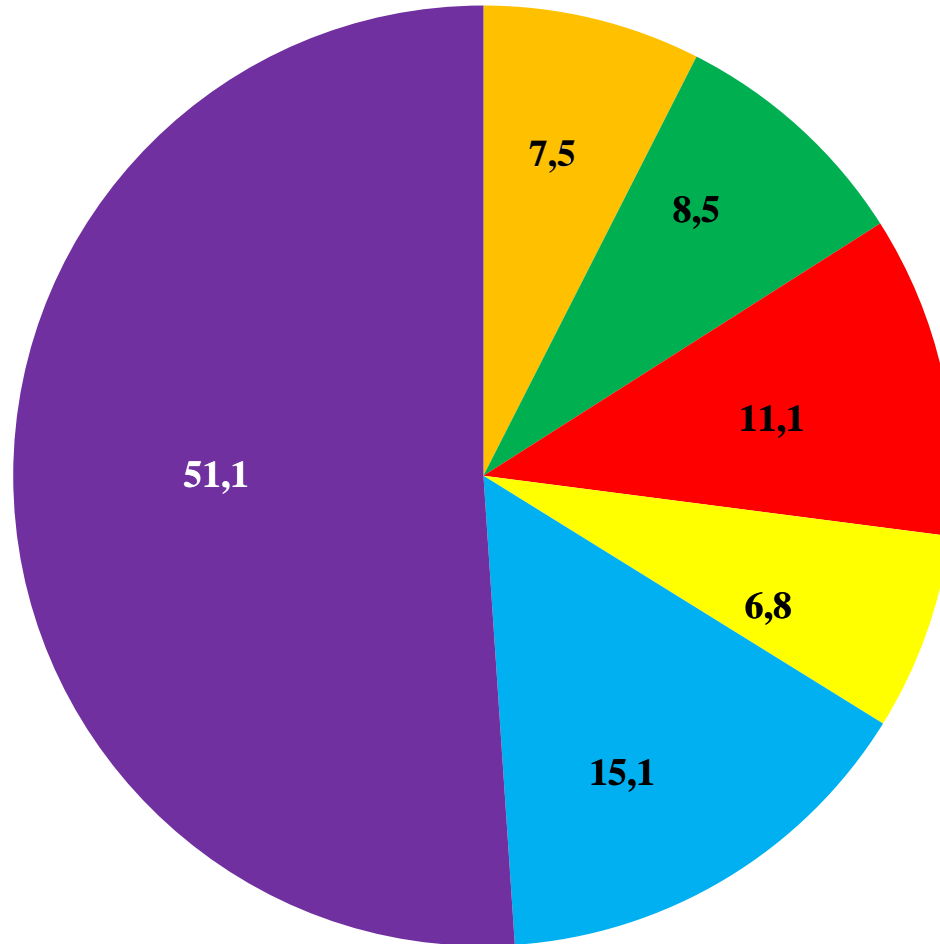
■ North. Africa   ■ Centr. Africa   ■ East. Africa   ■ West. Africa   ■ South. Africa

Source : Fdi Markets, Apr.2015



# AFRICA - Major receiving countries

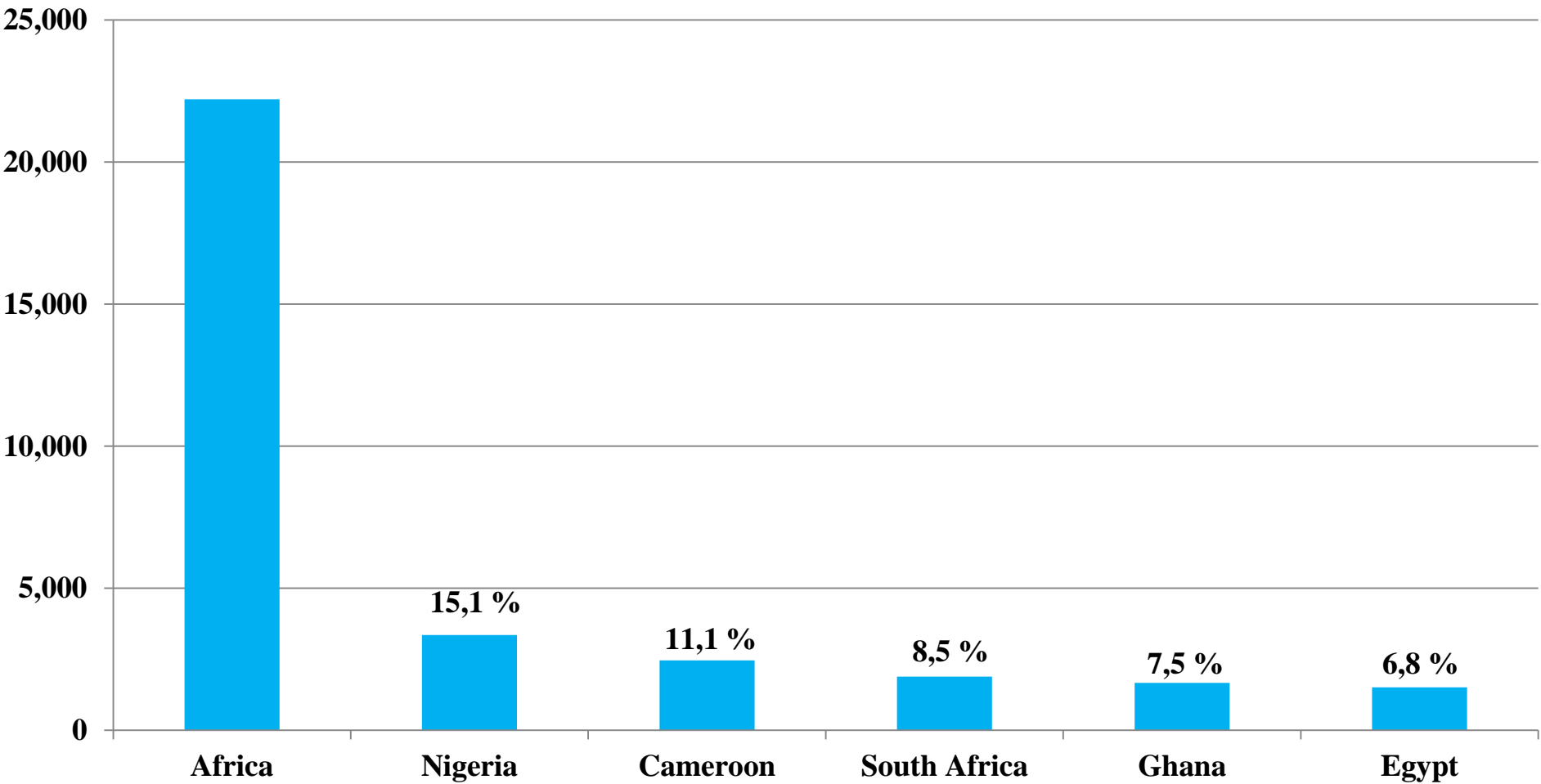
## Cumulative 2003-14 in %



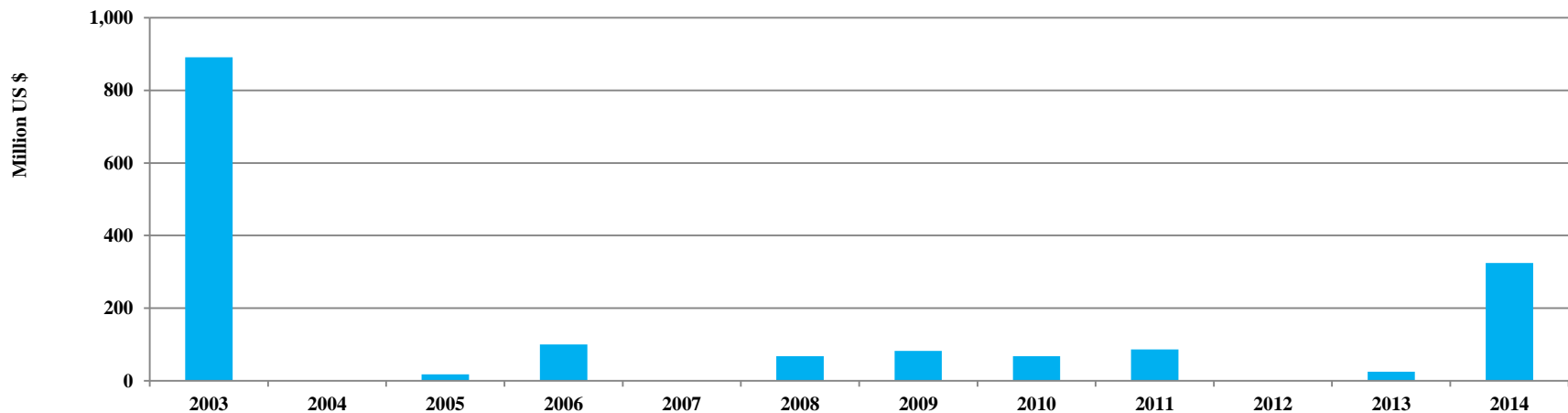
■ Ghana ■ South Africa ■ Cameroon ■ Egypt ■ Nigeria ■ Others

# AFRICA: Major receiving countries, 2003-14

Million US \$



# Ghana: Gross Foreign Direct Investment Inward Flows, 2003-2014



Foreign direct investment in Ghana during the period 2003-14 : by source countries

	2003	2004	2005	2006	2007	2008	2009	2010	2011	2012	2013	2014
	Million US \$											
<b>AFRICA</b>	<b>0,0</b>	<b>0,0</b>	<b>0,0</b>	<b>0,0</b>	<b>0,0</b>	<b>0,0</b>	<b>0,0</b>	<b>0,0</b>	<b>0,0</b>	<b>0,0</b>	<b>0,0</b>	<b>284,1</b>
Mauritius												250,0
South Africa												34,1
<b>AMERICA</b>	<b>0,0</b>	<b>0,0</b>	<b>6,7</b>	<b>100,0</b>	<b>0,0</b>	<b>0,0</b>	<b>82,4</b>	<b>0,0</b>	<b>33,9</b>	<b>0,0</b>	<b>25,0</b>	<b>40,6</b>
United States			6,7	100,0			82,4		33,9			40,6
Brazil											25,0	
<b>ASIA</b>	<b>0,0</b>	<b>0,0</b>	<b>0,0</b>	<b>0,0</b>	<b>0,0</b>	<b>0,0</b>	<b>0,0</b>	<b>31,5</b>	<b>0,0</b>	<b>0,0</b>	<b>0,0</b>	<b>0,0</b>
Singapore								31,5				
<b>EUROPE</b>	<b>891,0</b>	<b>0,0</b>	<b>11,0</b>	<b>0,0</b>	<b>0,0</b>	<b>67,8</b>	<b>0,0</b>	<b>36,2</b>	<b>52,8</b>	<b>0,0</b>	<b>0,0</b>	<b>0,0</b>
Italy						33,9						
Spain			1,0									
UK	891,0					33,9			46,0			
Switzerland			10,0					36,2	6,8			
<b>World</b>	<b>891,0</b>	<b>0,0</b>	<b>17,7</b>	<b>100,0</b>	<b>0,0</b>	<b>67,8</b>	<b>82,4</b>	<b>67,7</b>	<b>86,7</b>	<b>0,0</b>	<b>25,0</b>	<b>324,7</b>