

# Putative glandular territories associated with *Rhynchophorus* *ferrugineus* ovipositor

Russo V.<sup>1</sup>, Salerno M.<sup>2</sup>, Porcelli F.<sup>1,2,3</sup>

1 CIHEAM-IAMB 2 DiSSPA UNIBA Aldo Moro, 3 CNR-IPSP Bari



UNIVERSITY OF BARI  
ALDO MORO  
DEPARTMENT OF SOIL, PLANT  
AND FOOD SCIENCES

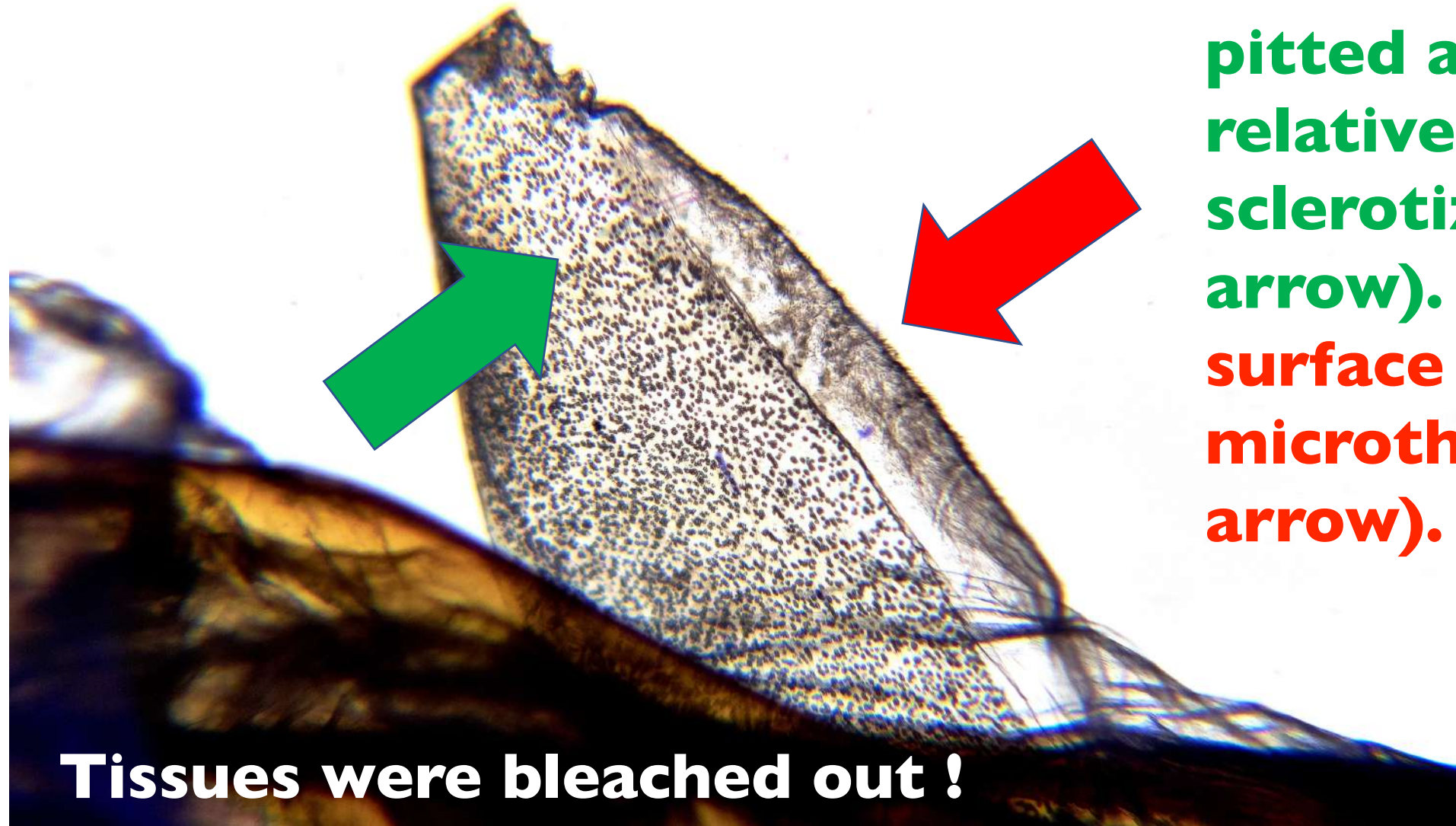


Food and Agriculture  
Organization of the  
United Nations



Russo, Salerno, Porcelli... Putative glandular territories ...

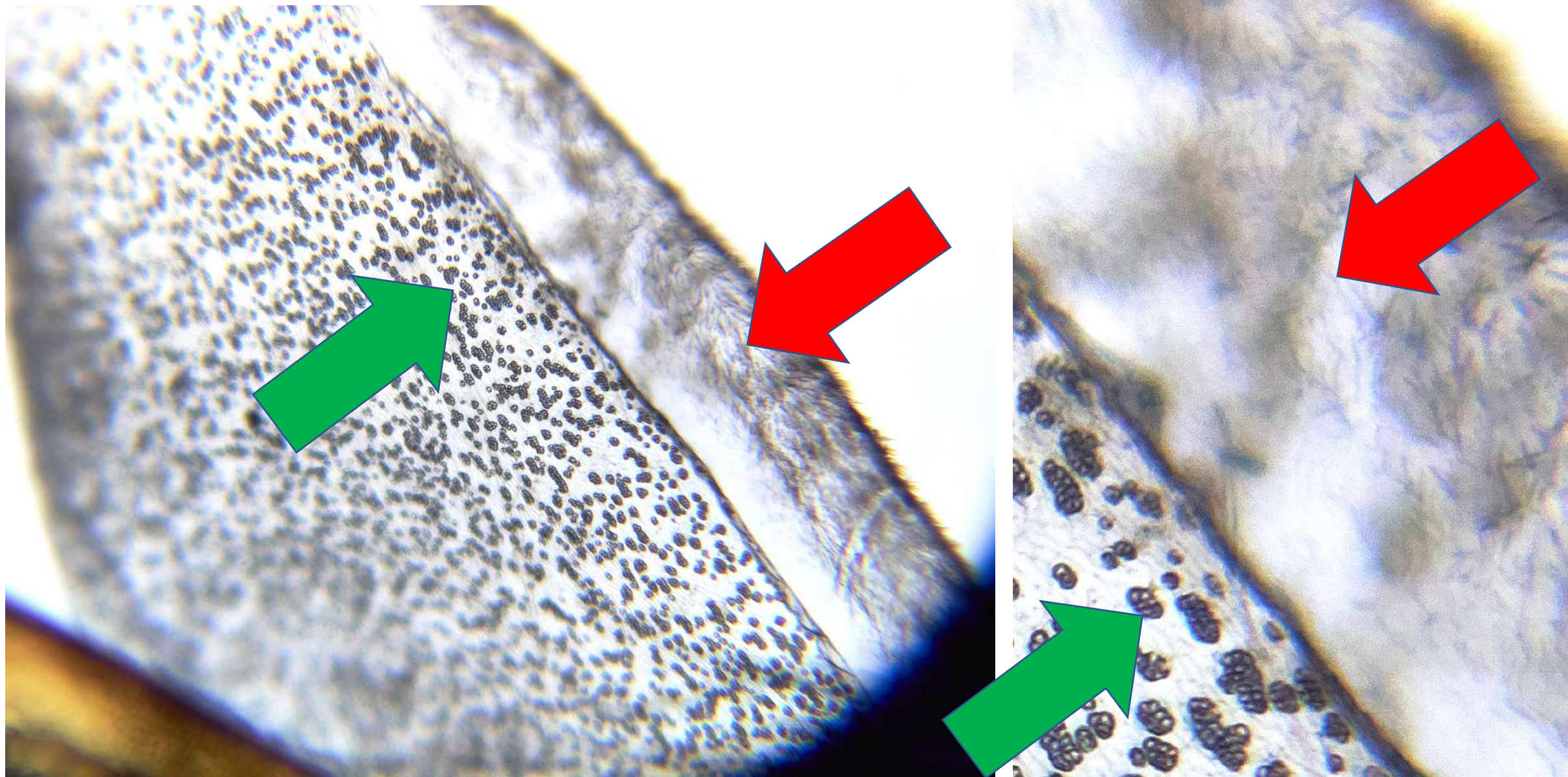




**Dorsal surface is pitted and relatively sclerotized (green arrow). Ventral surface bears microthrichia (red arrow).**

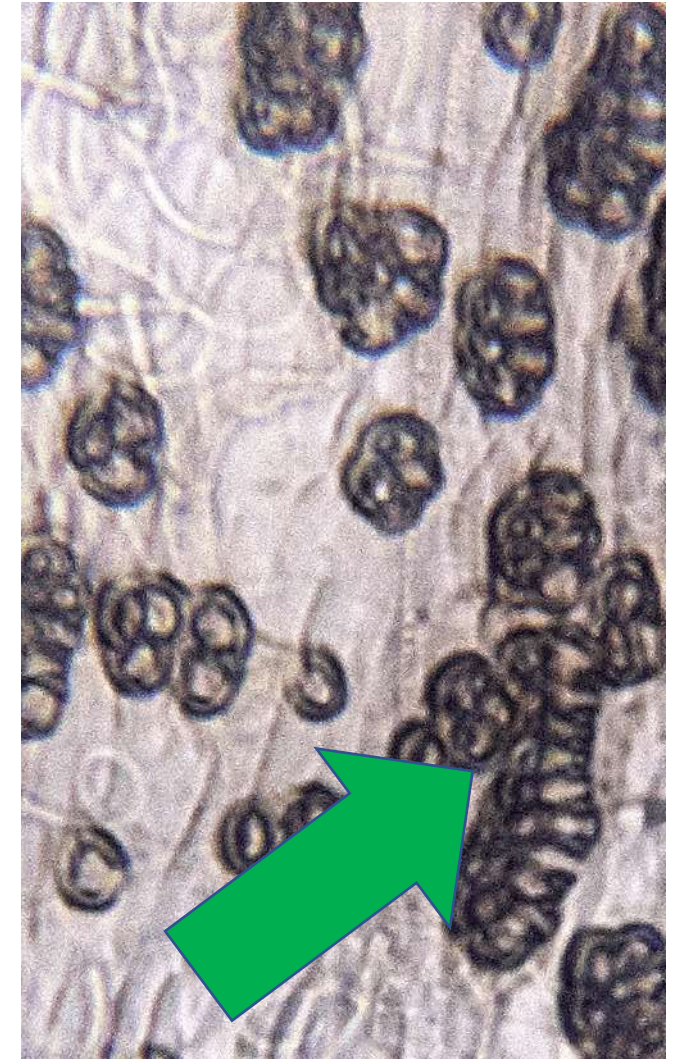
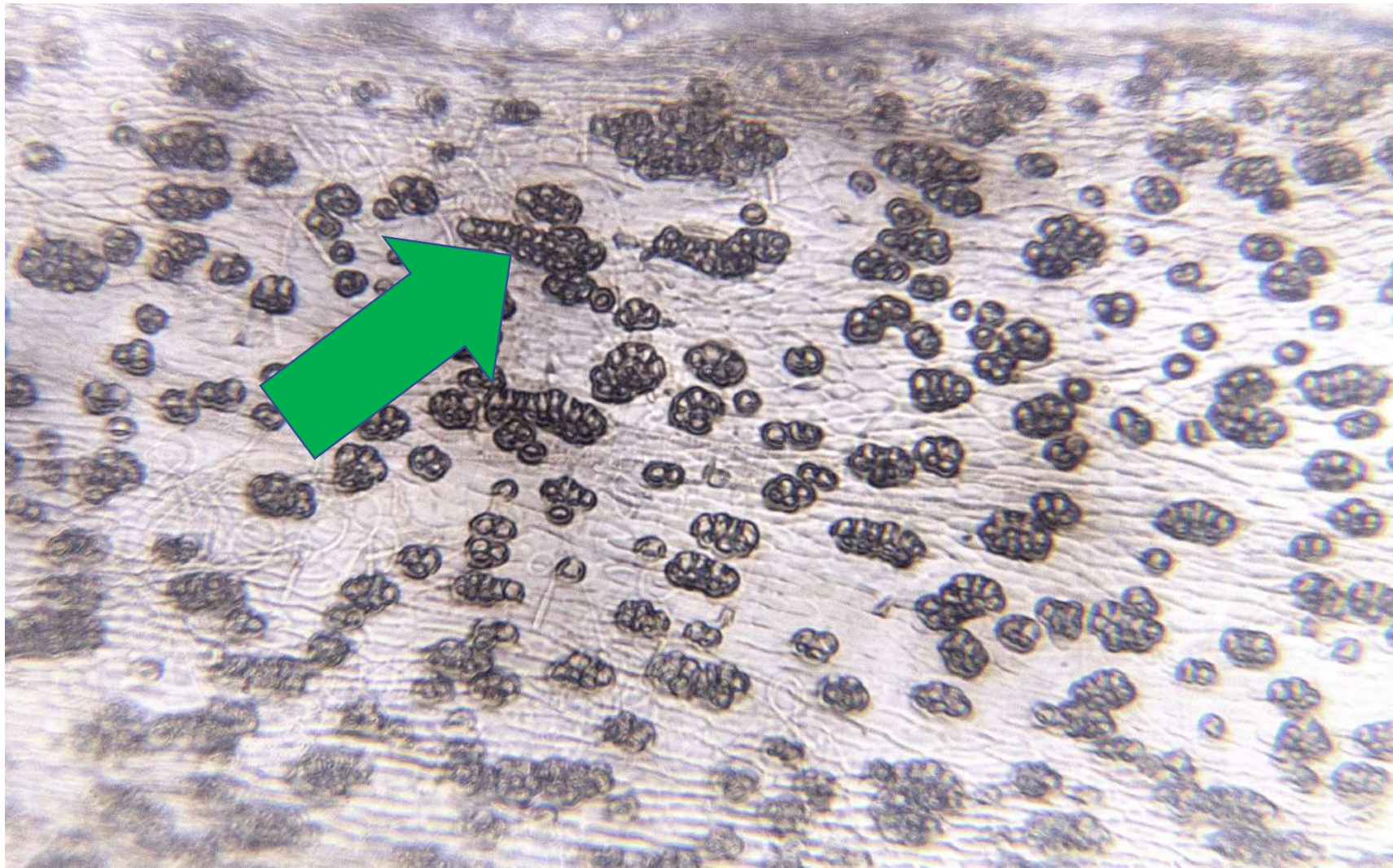
**Tissues were bleached out !**







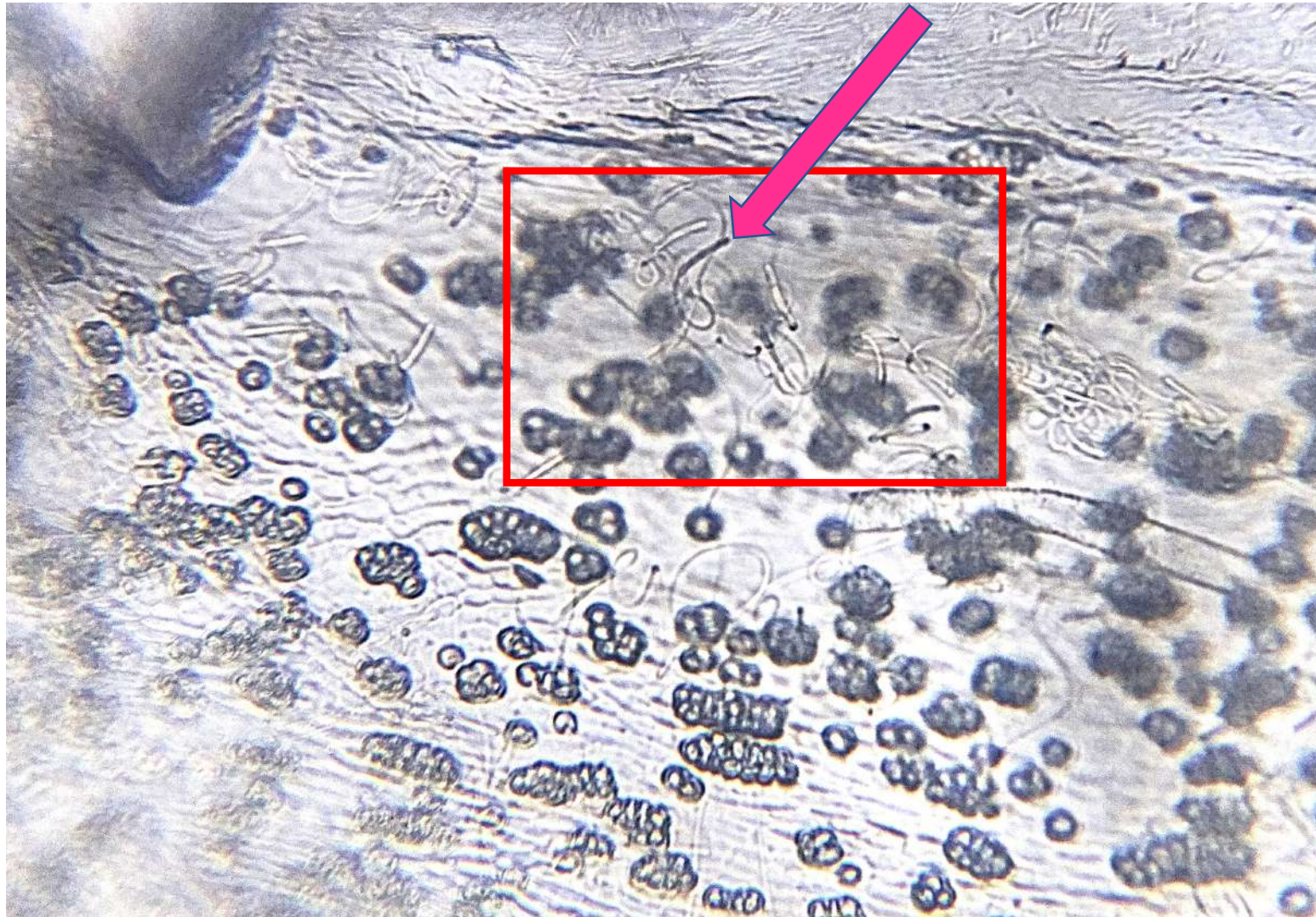
# Mind, thin cuticle is almost transparent !



Russo, Salerno, Porcelli... Putative glandular territories ...

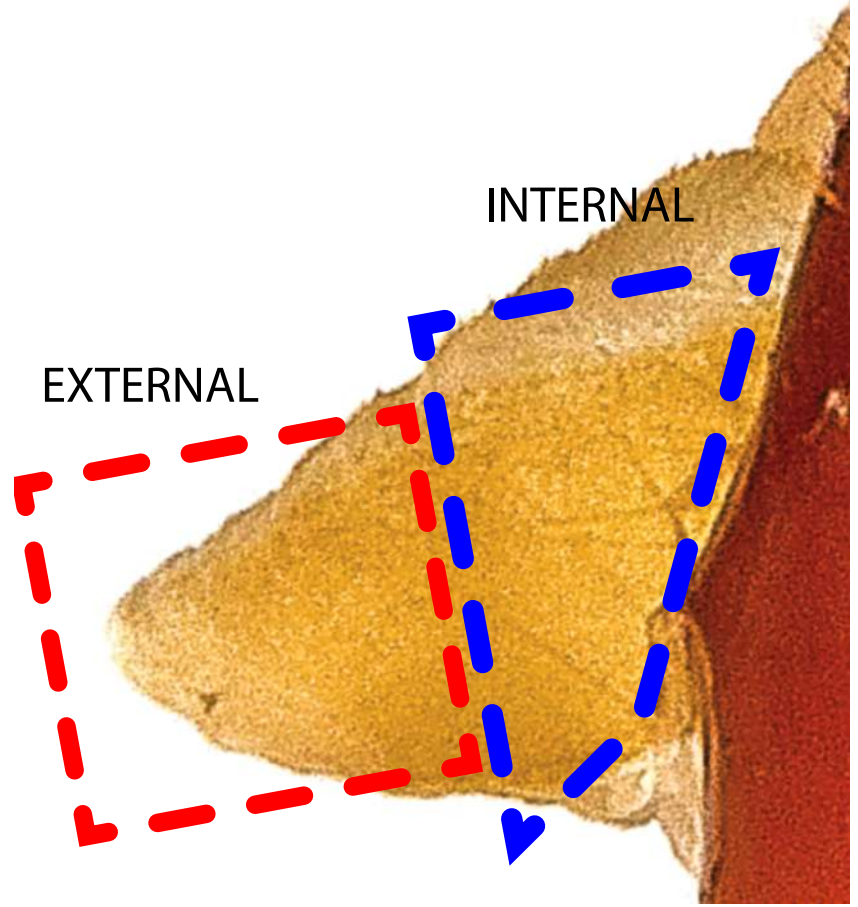
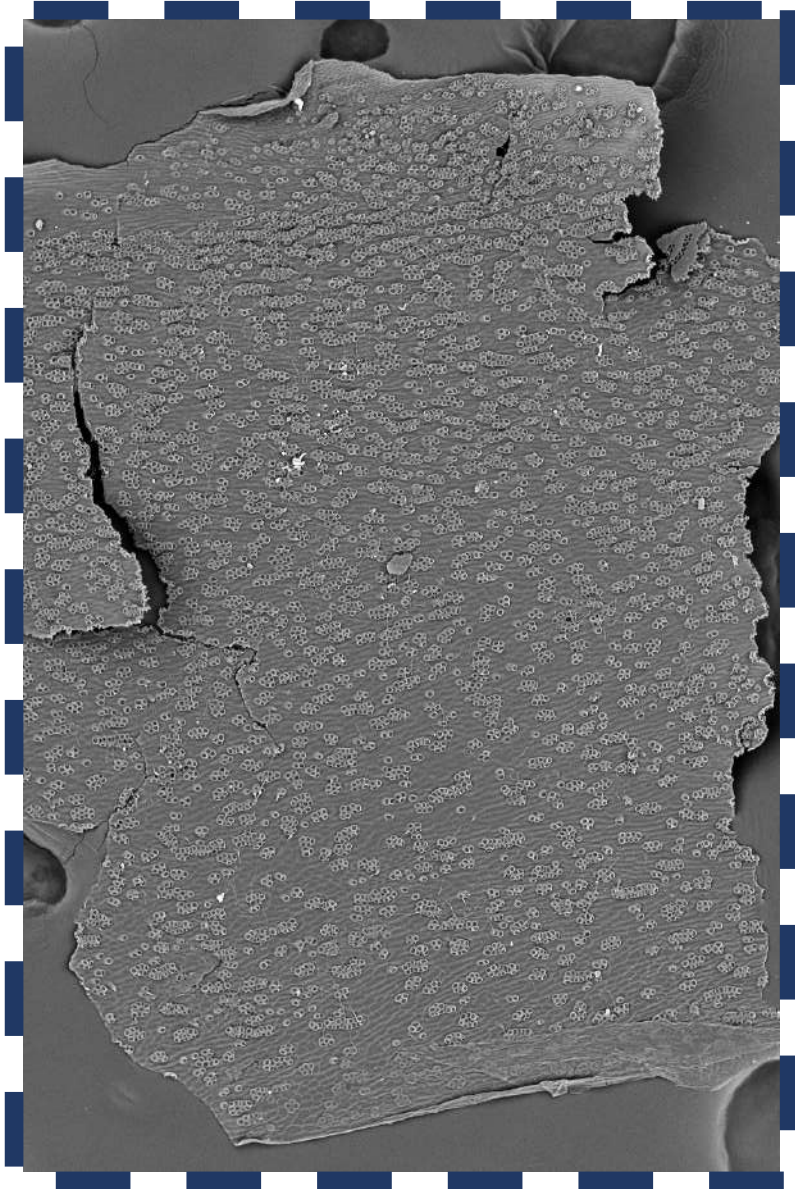
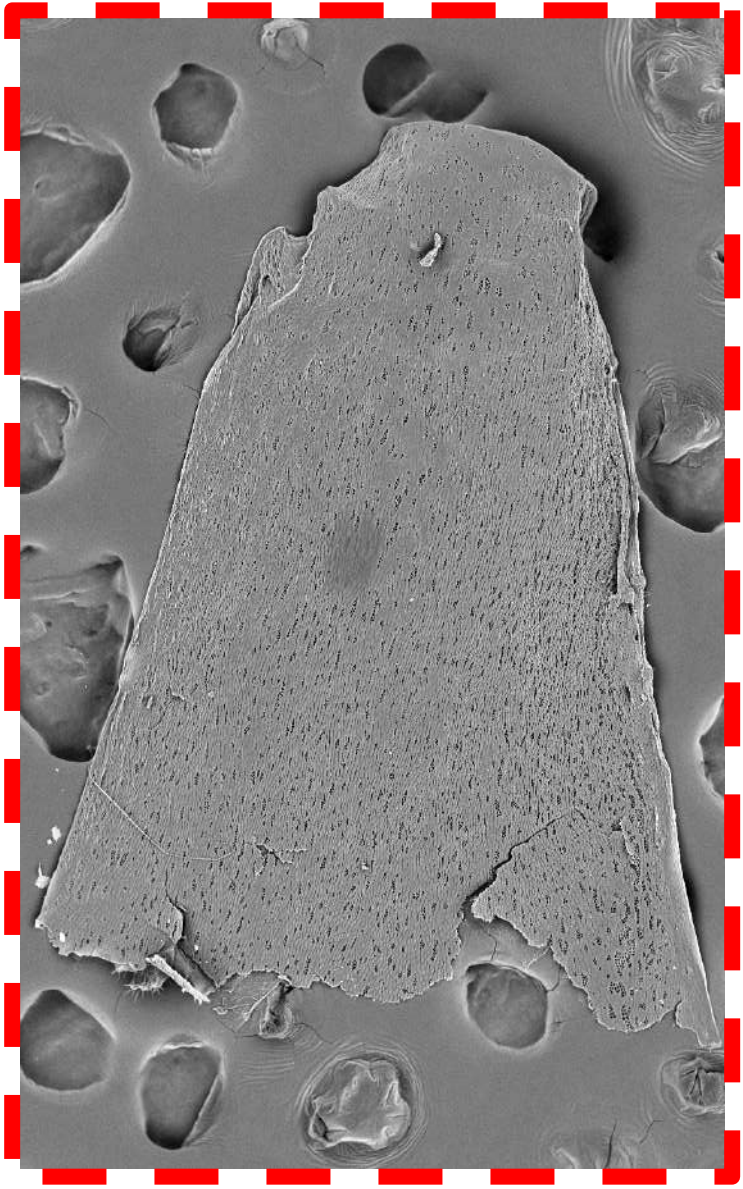


# Mind, thin cuticle is almost transparent !



Russo, Salerno, Porcelli... Putative glandular territories ...

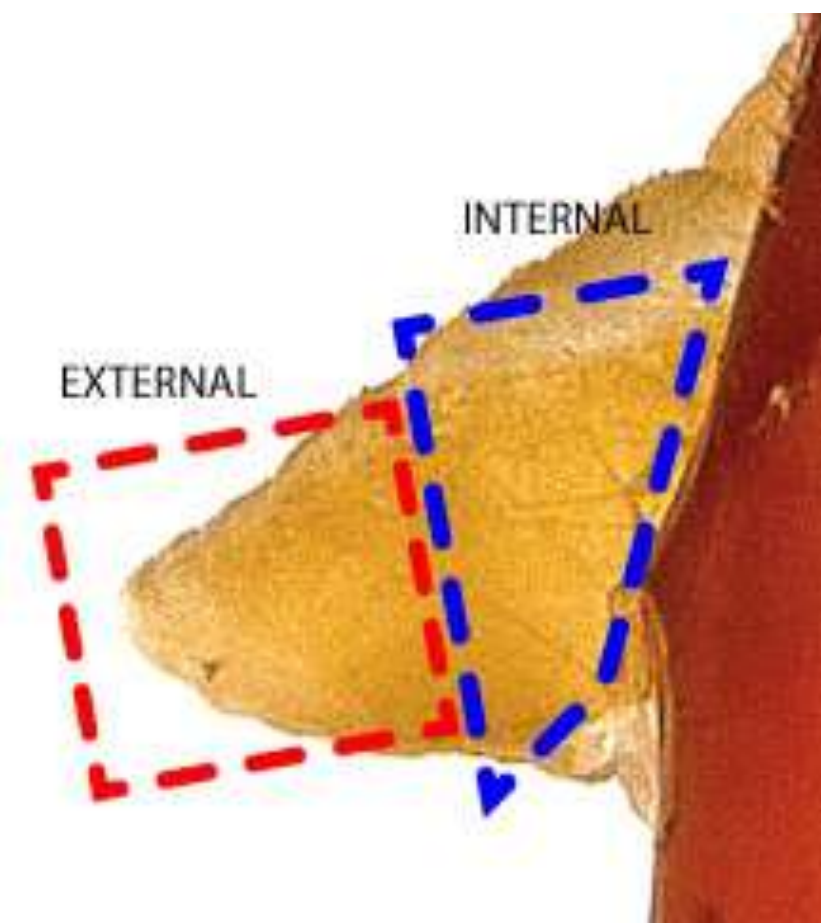
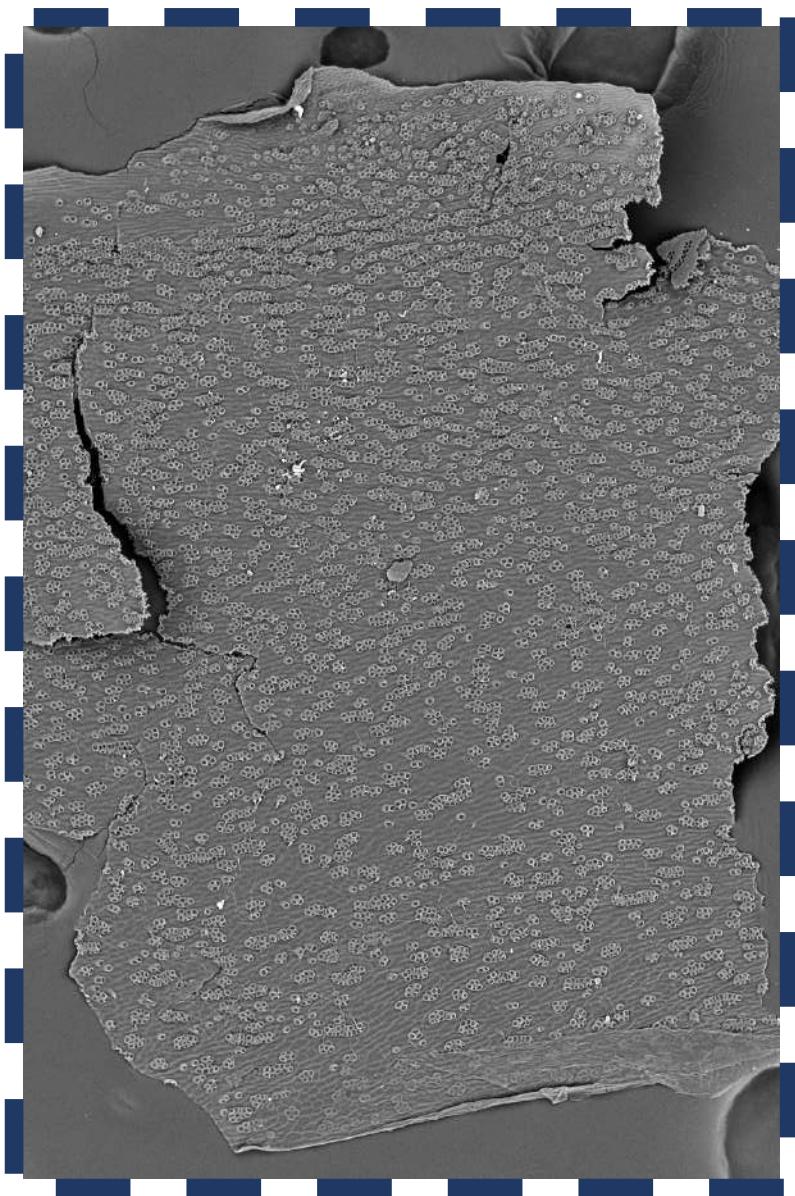
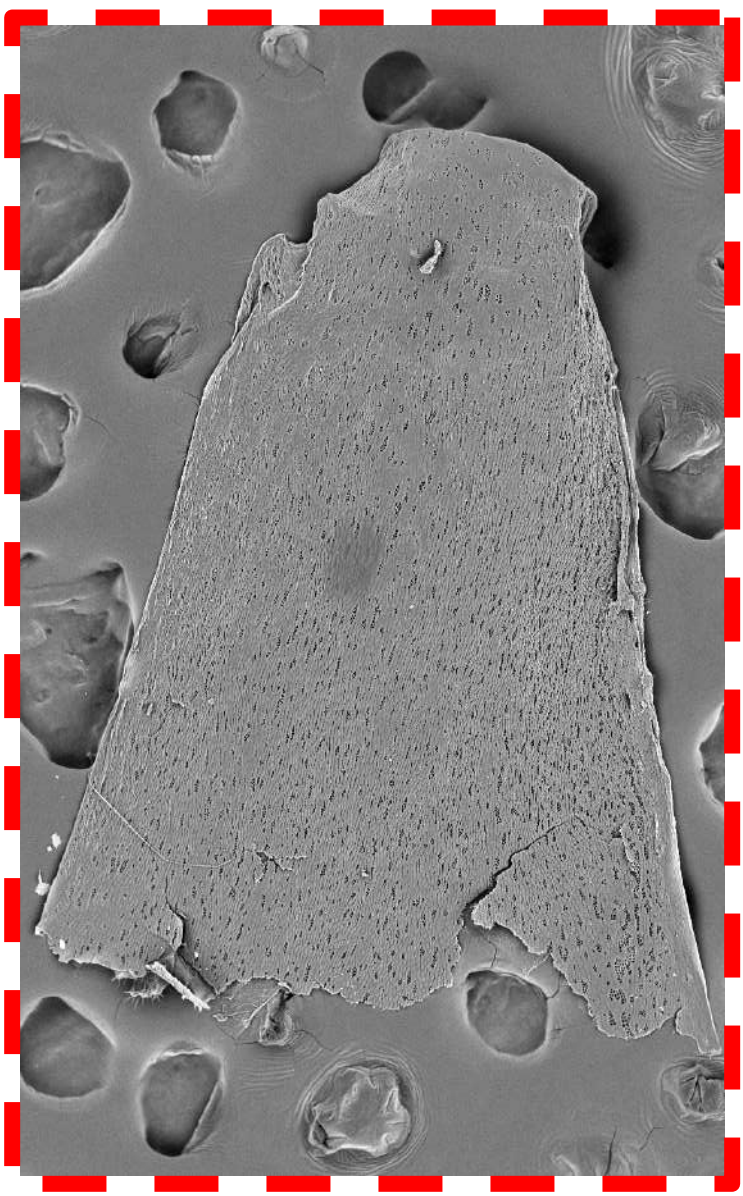




Russo, Salerno, Porcelli... Putative glandular territories ...

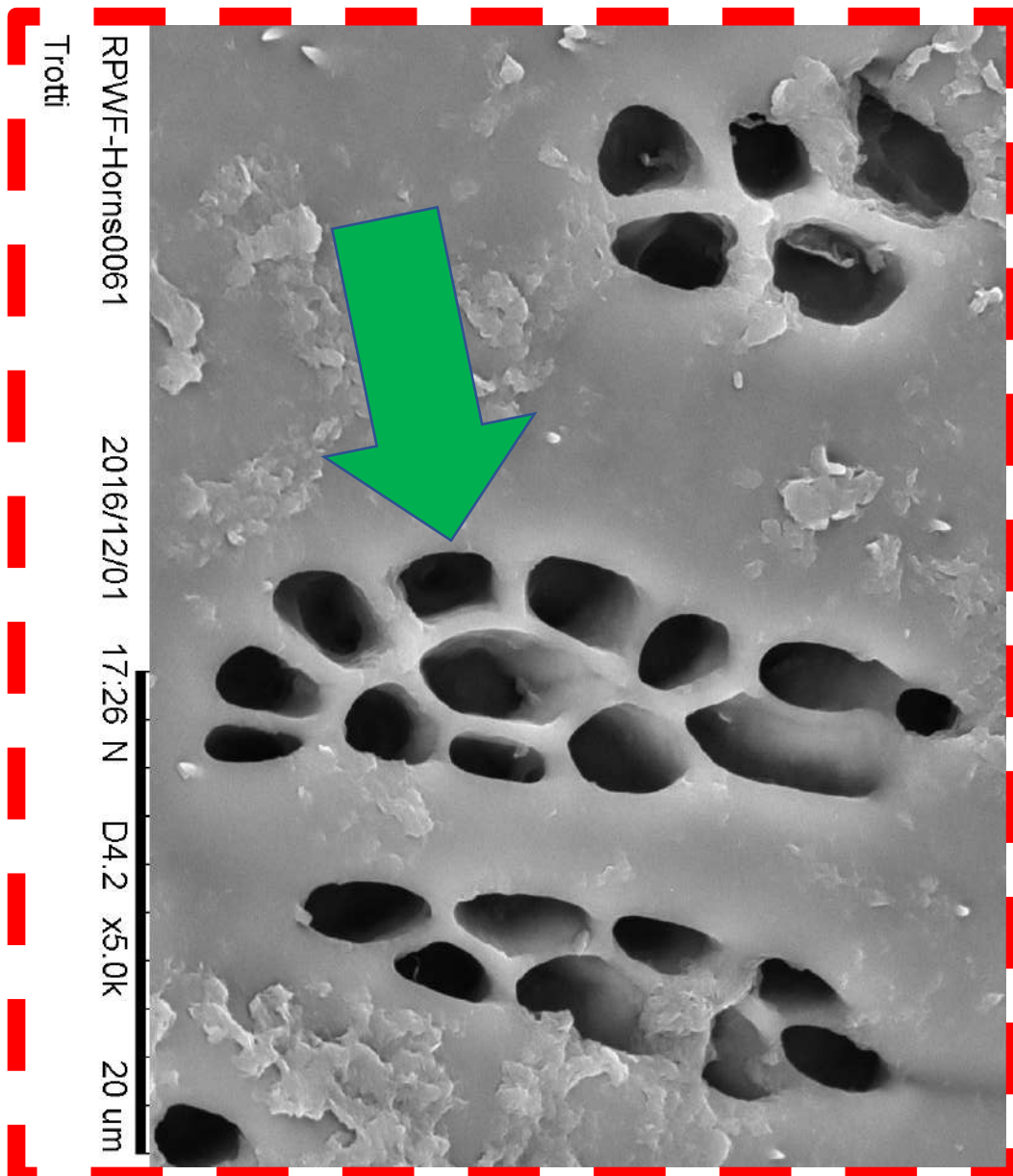
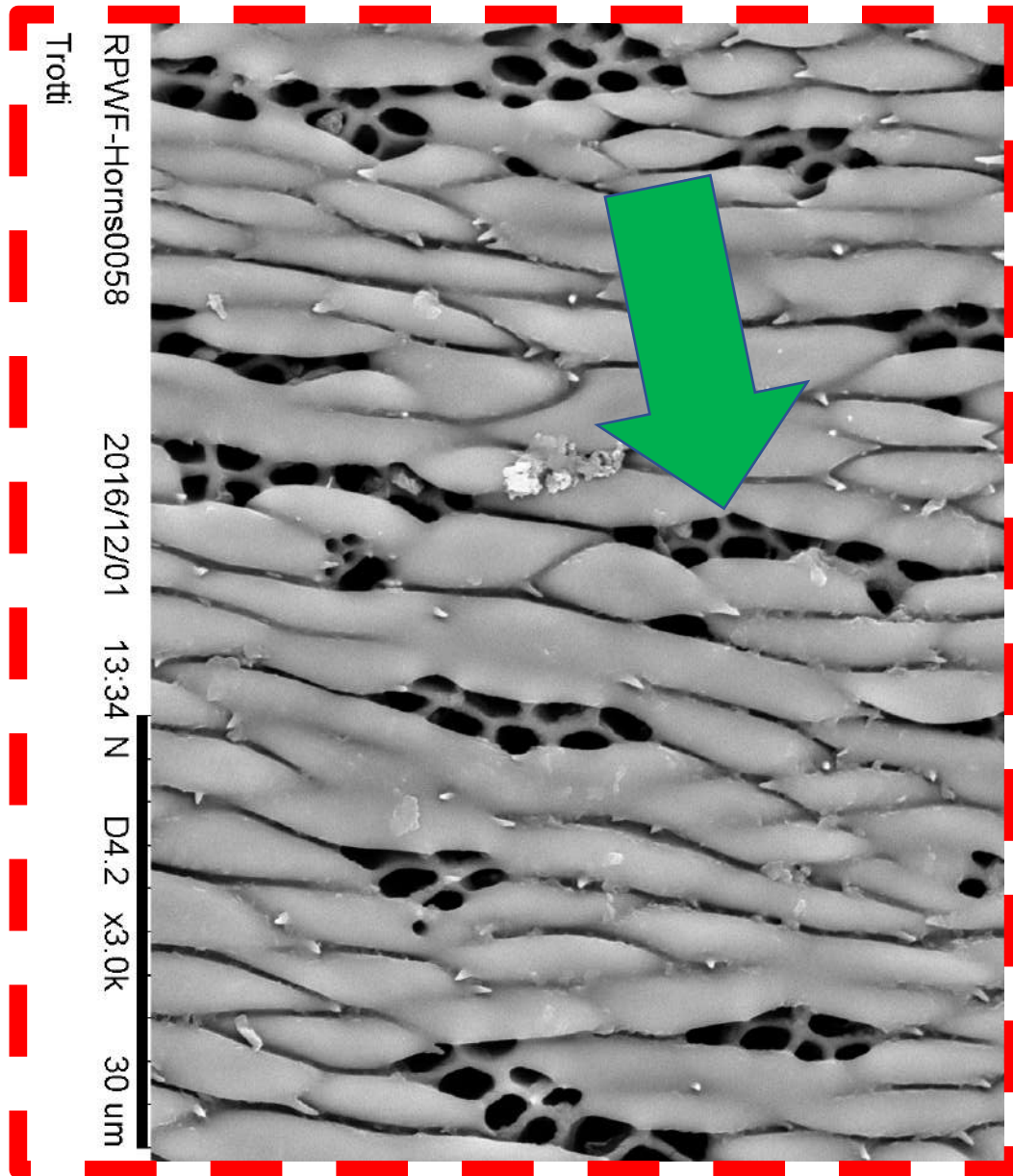
**Tissues were bleached out !**



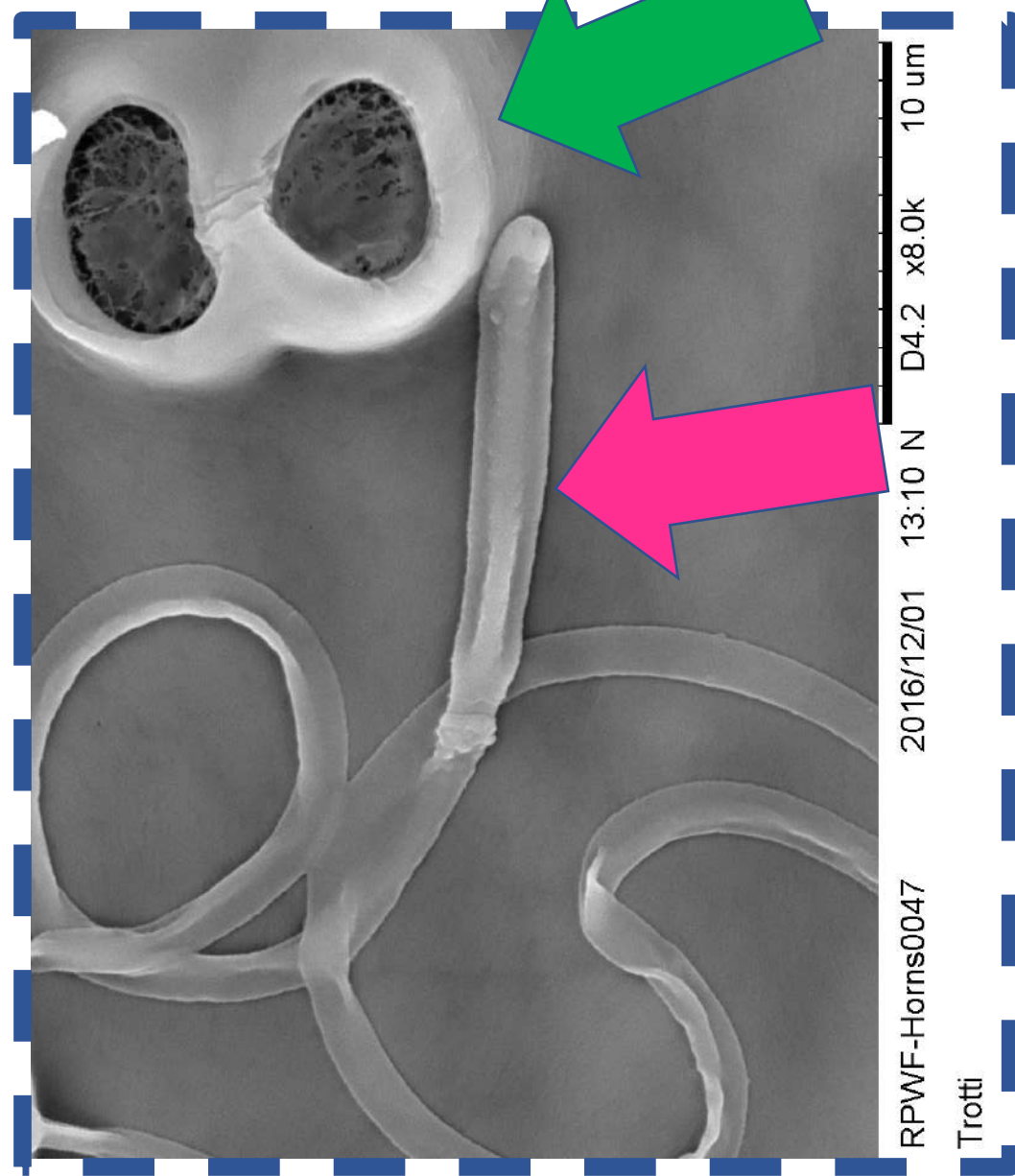
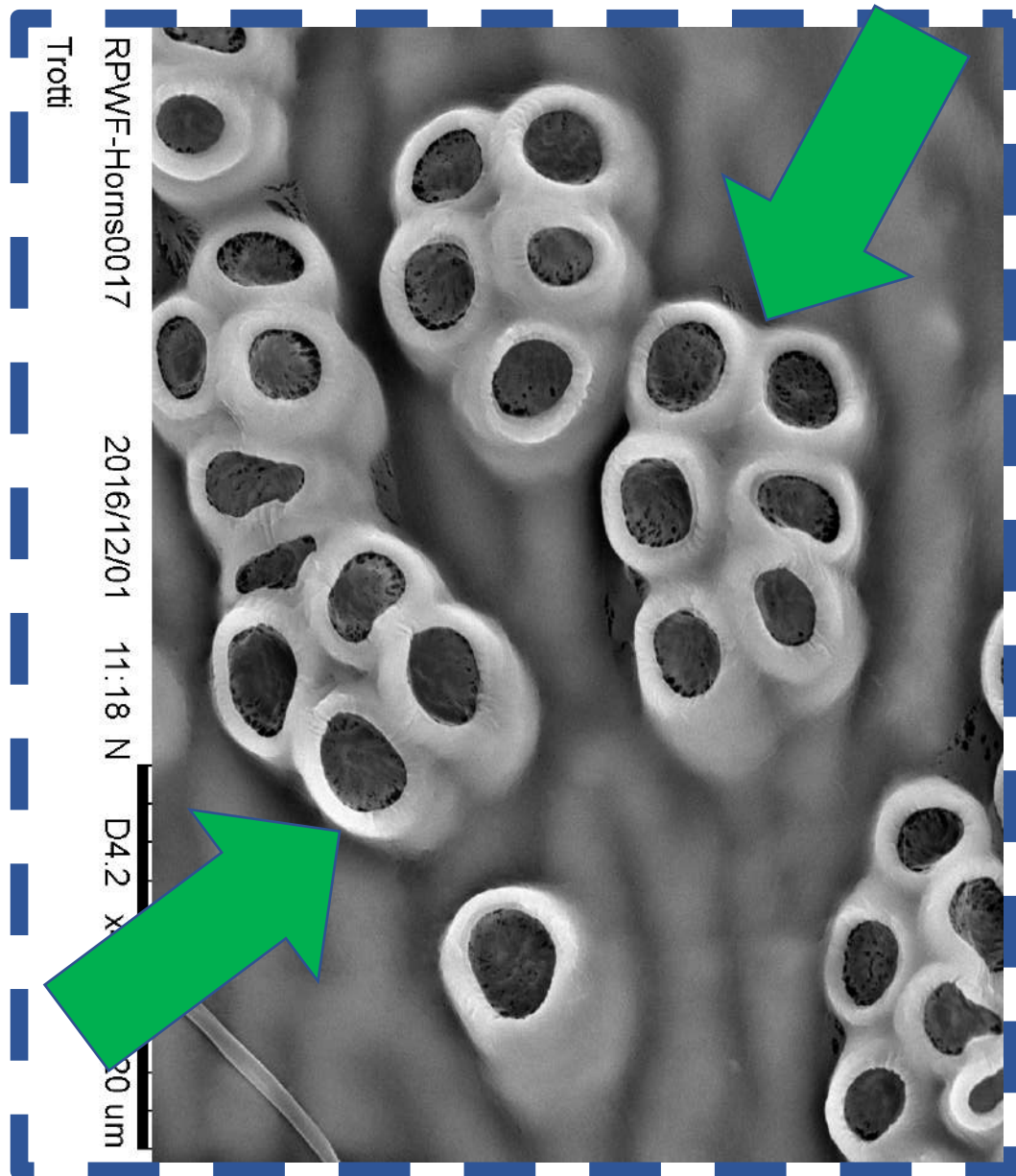


Russo, Salerno, Porcelli... Putative glandular territories ...











# To discuss:

1. New semiochemicals in RPW management?
2. Many thanks 😊 😊 😊