

Global Fire Email Alerts

from FAO's Global Fire Information Management System

<http://www.fao.org/nr/gfims/email-alerts/en/>

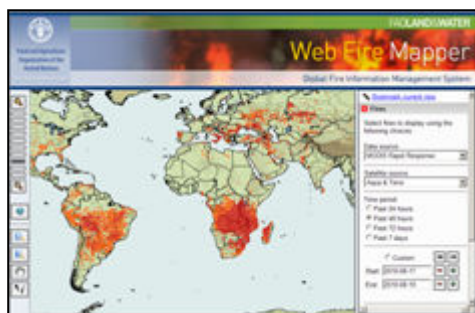
Registration Instructions

1.0 Rationale

Fire is an important ecosystem disturbance resulting in land cover alteration and change, and in atmospheric emissions on multiple time scales.

Fire is also an important land management practice, as well as a natural abiotic agent in fire dependent ecosystems.

Information on vegetation fires is important for many different applications, from policy formulation to strategic land management; from detection and early warning, deployment of assets for fire suppression, follow up restoration planning, and strategy development for preparedness and prevention, to ecological monitoring; from modelling fire emissions to validating fire risk maps, all from global to local scale.



In line with the UNFCCC and UNCCD objectives, FAO-NRL is actively contributing to the monitoring and detection of wildfire through the **Global Fire Information Management System (GFIMS)**. GFIMS integrates remote sensing and GIS technologies to deliver near real time hotspot/fire locations to managers, policy makers, and general public around the World. GFIMS data and services are completely free.

2.0 Fire Email Alerts

The Fire Email Alerts is an open source email alert service that FAO provides through GFIMS, which notifies registered users about MODIS-derived active fires recently detected in or around a specified area-of-interest. The email alert is sent directly to the users, by reading a database of user-entered subscription information (user profiles).

During the registration, users are required to provide information such as:

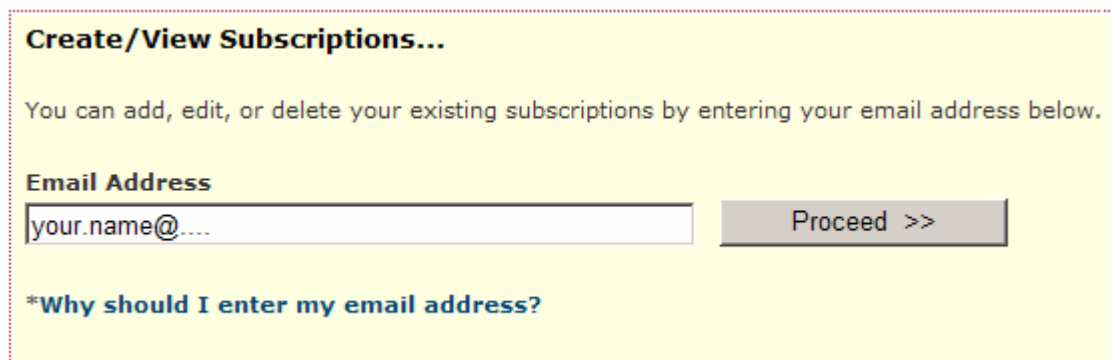
- their area of interest,
- alert frequency (the options are: daily/weekly/near real-time),
- email delivery preferences (text-only, ,map and text), and
- language of the email (currently English, French and Spanish).

The email alert includes a summary of number of fires detected and an attached tabular list of fires with their attributes in Comma Separated Value (.csv) format as an attachment.

Daily and Weekly fire alerts are sent from the GFIMS system, whereas near real-time alerts are sent directly from the MODIS Rapid Response (MRR) facility to avoid any additional delays that could be caused by relaying the data from MRR to the GFIMS servers.

3.0 About subscriptions

You can subscribe to receive emails with different frequency notifying you of fires in or around your area-of-interest. At the Fire Email Alerts home page [<http://www.fao.org/nr/gfims/email-alerts/en/>], insert your email in the address input box and click on Proceed.



You will enter the *Subscriptions* page.

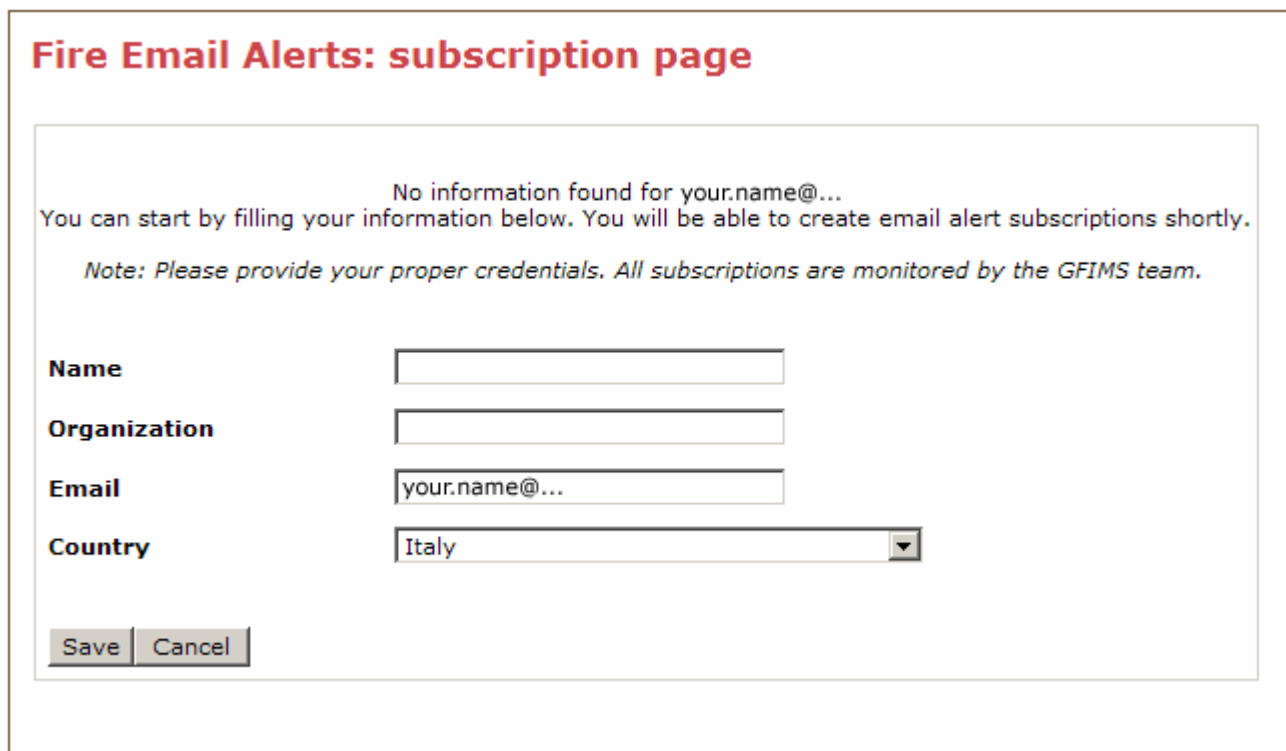
It allows to create/edit your profile, and to create/edit subscriptions to email alerts.

There are two possibilities:

- a. you are a new subscriber
- b. you have already subscribed for email alerts

3.1 NEW SUBSCRIBER

If the input email is not found in the database, you will be required to fill up personal information (see example below):



Insert your name, organization, email where you wish to receive the alerts, and the country of reference, and then click on the *Save* button. When this step is completed, you will have your profile in the system and will be

Food and Agriculture Organization of the United Nations, Land and Water Division (NRL)

Global Fire Email Alerts – subscription guidelines, 19-08-2010

able to add new alert subscriptions or edit existing ones. At any time this profile can be updated (see later instructions).

3.2 EXISTING SUBSCRIBER

If you are an existing subscriber, you may edit your profile or/and create/edit subscriptions.

A subscription is basically the registration to receive email alerts for a specific area of interest and with specific email content (map of fire locations in the email body or not, tabular list of fire locations and attributes in the email body or only as an attached text file, etc..). The language can be also set.

The figure below shows an example of existing subscriber with two subscriptions:

Fire Email Alerts: subscription page

YOUR INFORMATION (Edit)								
Name	Your name...							
Organization	Your Organization...							
Email	your.name@...							
Country	Country...							

NEW SUBSCRIPTION (Create)								

MODIFY EXISTING SUBSCRIPTIONS (Total: 2)								
= Edit = Delete = Inactive. Click to Activate = Active. Click to Deactivate								
Select: All None								
Actions...								
	Modify	Active?	Alert Name	Area-of-Interest	Type	CSV file	Language	
<input type="checkbox"/>			guinea rapid	Guinea	Rapid	Yes	English	
<input type="checkbox"/>			Guinea (country)	Guinea	Daily	Yes	Spanish	

In details, through this page you can:

a) edit your profile

Click on the Edit link, change information, and click on the Save button.

b) create a new subscription

See following section.

c) modify status of existing subscriptions

You may have as many subscriptions as you wish and they will be listed as you see above.

From this section you can:

Edit one subscription (see following section),

Delete it,

Change its status from Active to Not active (still there but deactivated).

Actions (delete/activate) on multiple records can be applied using the checkboxes and the selection list box. Summarized information on subscription settings is also provided.

3.3 CREATE/EDIT SUBSCRIPTIONS

If you create a new subscription or edit an existing one, the system will lead you in the *subscribe* page. This page is divided in three sections:

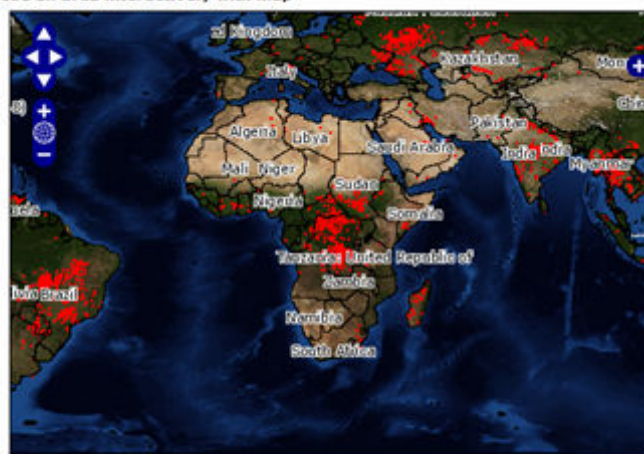
- Choose the area of interest
- Customize the email alert
- Subscription confirmation

a) Choose the area-of-interest

If you choose the Interactive map, an open source mapping interface will display allowing you to zoom and/or pan until the desired window is defined. The service will send email alerts for new fires detected in the selected window.

This window will be also used to define the graphic map to send with the email, if requested by the user.

Choose an area interactively with map



MODIS Active Fire Detections (last 24 hours) are shown in red.
To change background, click on the + button on the top right.
To draw a zoom to a particular extent, hold the shift key and draw using your mouse.
-- OR --

If you choose to select a predefined boundary, country/territory or protected area, you will use the lists. In case of a protected area(PAs), you can also define buffers of 5, 10, or 15 Km around the PA. The protected areas list is the latest available from the World Database of Protected Areas.

1. CHOOSE YOUR AREA-OF-INTEREST

☐ Choose an area interactively with map

-- OR --

☒ Choose a country or a protected area

First, Choose a Country or Territory

Select a Country

Then, Choose a Protected Area (Optional)

Choose a Protected Area

Choose Buffer Area (for Protected Areas only)

☒ No Buffer ☐ 5 Km ☐ 10 Km ☐ 15 Km

b) Customize your email alert

In this section you define a name for your subscription, the map size to be sent (eventually) with the email, the language to be adopted in the email (currently English, French and Spanish), the alert type (daily, weekly, or real near time), and the email content (only text or text and graphic, see example in the next page). Consider that below 50 fires, a table will be displayed in the email; if there are more than 50 fires then they will only be listed in an email attachment as comma delimited text file. CSV files can be easily opened in either spreadsheet or desktop GIS software. The tabular report of the fire locations in the email alerts includes the geographic coordinates of pixels flagged as containing one or more fires, the time and date of data satellite acquisition and a confidence value.

2. CUSTOMIZE YOUR EMAIL ALERT

Name your alert
(Optional)

Output Map Size

400 [W] x 300 [H] pixels ▾

Language Preference

English ▾

Alert Type

Daily ▾

Email Preferences

Send Text and Map Image ▾

☒ Attach a **.CSV file** with Fire Points to the Email

c) Subscribe to receive emails

In this section you may request the system to send you back an email of confirmation of your new/edited subscription, summarizing the user-defined settings above.

3. SUBSCRIBE* TO RECEIVE EMAIL

☒ Send Email Confirmation for this Subscription

Cancel

Save Subscription

***YOUR SUBSCRIPTION DETAILS WILL NOT BE SHARED, DISCLOSED, OR DISTRIBUTED TO THIRD PARTIES.**

4.0 Contacts

Food and Agriculture Organization of the United Nations

Viale delle Terme di Caracalla
00153 Rome, Italy
Telephone: +39 (0)6 5705 3450
Fax: +39 (0)6 5705 3369

Global Fire Information Management System (GFIMS)

WEB: <http://www.fao.org/nr/gfims/gf-home/en/>
E-mail: GFIMS@fao.org

Team – FAO Land and Water Division

- John Latham - Senior Land and Water Officer (Geospatial)
- Antonio Martucci - Information Systems Officer
- Renato Cumani - Environment Officer

FAO Forestry Department

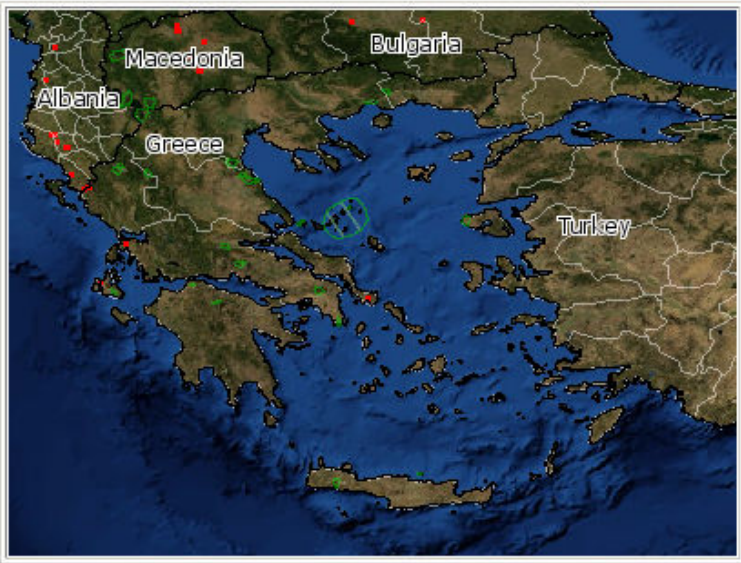
Forest Management Team

- Pieter van Lierop - Forestry Officer (Fire Management), focal point
Email: Pieter.vanLierop@fao.org

Example of email alert:

GFIMS Global Fire Alerts - UN-FAO/UMD/NASA

[GFIMS Fire Alerts Home](#) • [GFIMS HOME](#) • [FAQ](#)



Your Area of Interest (Country) : Greece

Fires detected over the past 24 hours in your area-of-interest : **9**

(NOTE: Cloud cover might obscure active fire detections. The fire points will be listed only when the total number of active fires detected is less than or equal to 50)

This email was generated on 2010-08-24 , 04:01:12 UTC.

LATITUDE	LONGITUDE	CONFIDENCE	DATE	TIME	SATELLITE
38.877	20.845	66	2010-08-23	20:55	T
38.875	20.854	43	2010-08-23	20:55	T
38.046	24.449	66	2010-08-23	00:25	A
38.304	20.474	84	2010-08-23	00:25	A
38.88	20.859	87	2010-08-23	11:30	A
38.878	20.845	75	2010-08-23	11:30	A
38.89	20.856	51	2010-08-23	11:30	A
39.713	20.297	86	2010-08-23	11:30	A
39.711	20.283	87	2010-08-23	11:30	A

If you have any questions or comments, go to the Frequently Asked Questions (<http://www.fao.org/nr/gfims/faqs/en/>) or contact the GFIMS Team. To query the full active fire database for your area, go to GFIMS Home (<http://www.fao.org/nr/gfims/en/>). Please read the disclaimer below.

Disclaimer: The data in this email are made available by the Food and Agriculture Organization of the United Nations (FAO), in partnership with the University of Maryland and NASA MODIS Rapid Response. The data has not been modified and is as received from MODIS Rapid Response. Data, databases and other information made available through the Global Fire Information Management System (GFIMS) are provided as is and users bear all responsibility and liability for their use of data, and for any loss of business or profits, or for any indirect, incidental or consequential damages arising out of any use of, or inability to use, the data, even if FAO or the University of Maryland were previously advised of the possibility of such damages, or for any other claim by you or any other person. FAO or the University of Maryland make no representations or warranties of any kind, express or implied, including implied warranties of fitness for a particular purpose or merchantability, or with respect to the accuracy of or the absence or the presence of defects or errors in data, databases of other information. The designations employed in the data do not imply the expression of any opinion whatsoever on the part of FAO concerning the legal or development status of any country, territory, city or area or of its authorities, or concerning the delimitation of its frontiers or boundaries. For more information please go to <http://www.fao.org/nr/gfims/about/disclaimer/en/>