

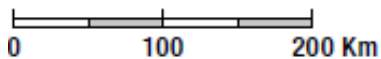


*Sustainable management of mountains
for food and water - experience from
Mount Elgon Uganda*

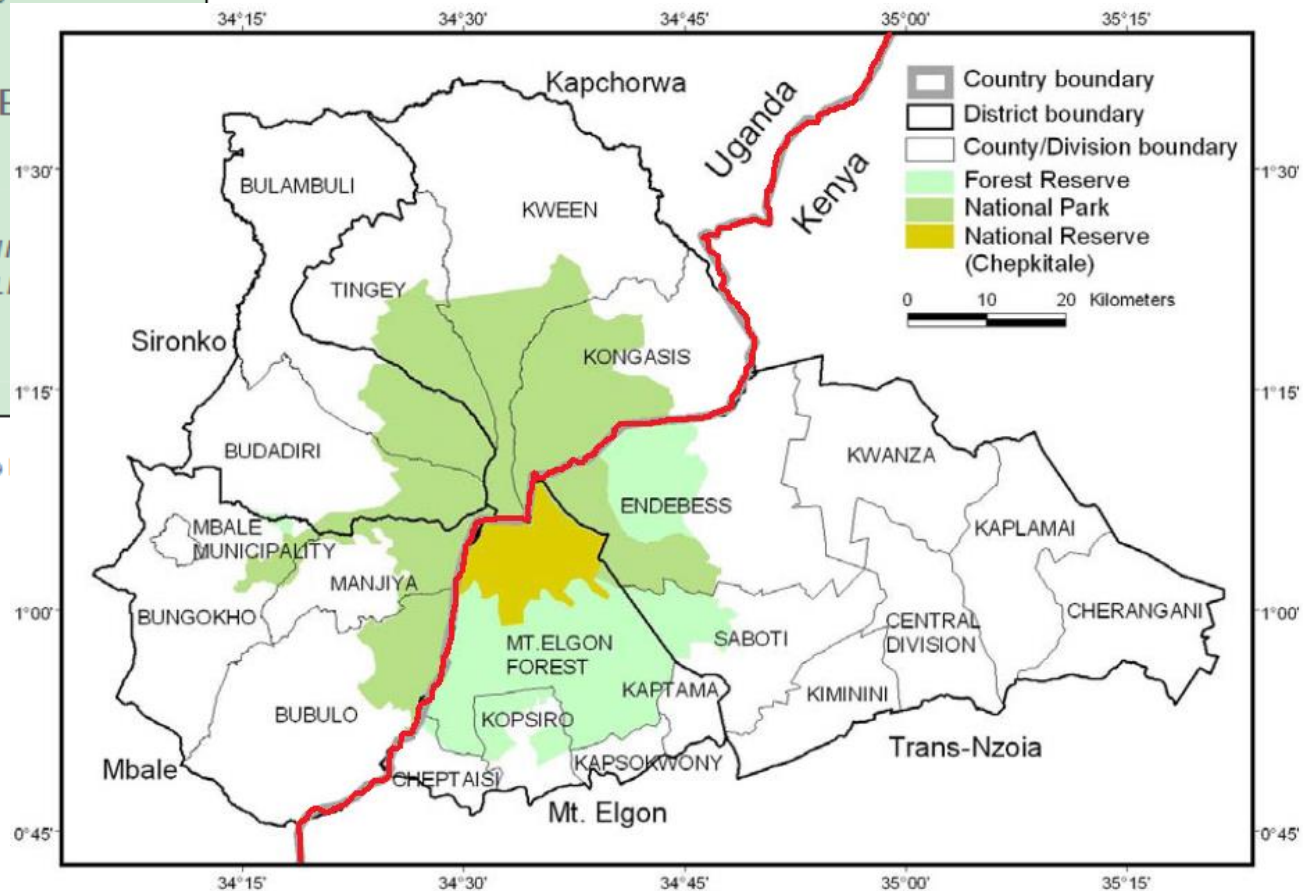
Paul Mafabi

Director Environment Affairs/MP National Focal Point Uganda

Introduction



Map of the



More highlights on Mt Elgon



- Large extinct volcano that straddles Eastern Uganda and Western Kenya
- 7th highest Mountain in Africa rising to 4,320 metres.
- An important **water tower** that nourishes a vast array of rivers, including the Nile
- Maintains water quality, quantity and evenness of flow due to its varied vegetation types & altitudes.
- High biodiversity importance

HOWEVER

- Ecosystem functionality and integrity has been compromised, further compounded by Climate Change and its associated impacts.



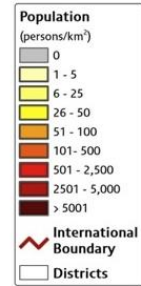
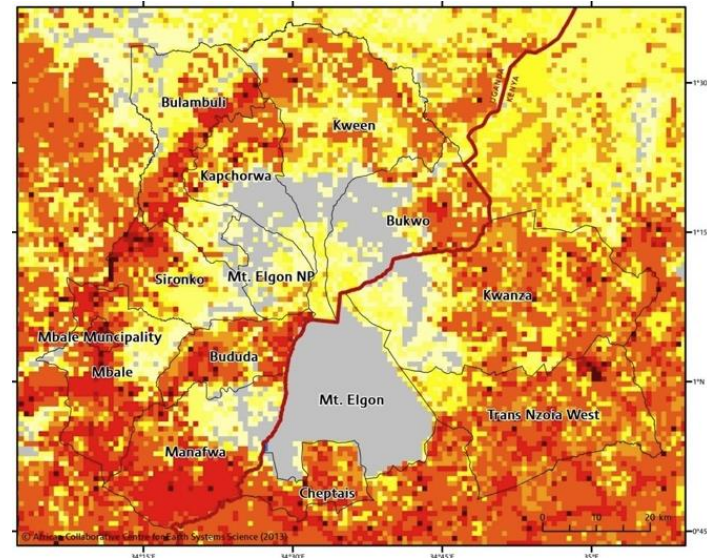
Risks & disasters in Mt. Elgon Ecosystem

- Landslides, flooding, hailstones, soil erosion & siltation
- Land-use & land cover changes due to:
 - Deforestation,
 - Encroachment into the national park (especially on the Ugandan side),
 - Land fragmentation due to high population & high poverty levels & over reliance on natural resources,
 - Riverbank degradation
 - Unsustainable Land Management Practices

• Very high Population density Vs. the National Average (952 vs 124 persons/Km²)



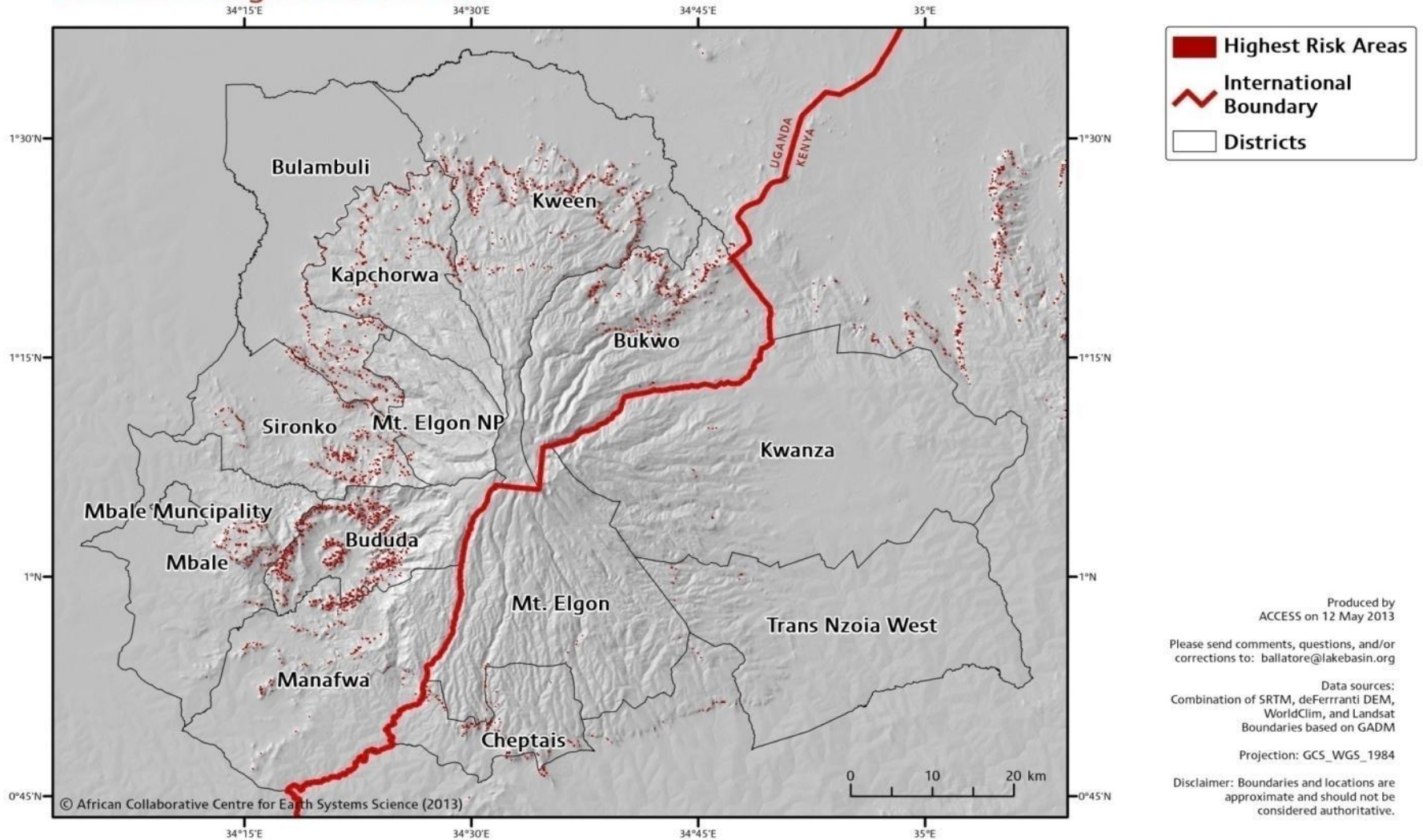
**Landslide high risk zone
Also climate change 0.5C rise, floods**



Produced by
ACCESS on 12 May 2013
Please send comments, questions, and/or
corrections to: ballator@ballator.org
Data sources:
Population based on LandScan 2008 (ORNL)
Boundaries based on GADM
Projection: GCS_WGS_1984
Disclaimer: Boundaries and locations are
approximate and should not be
considered authoritative.

Mt. Elgon Region: Areas of Concern (AOCs)

Landslides: Highest Risk Areas



Produced by
ACCESS on 12 May 2013

Please send comments, questions, and/or
corrections to: ballatore@lakebasin.org

Data sources:
Combination of SRTM, deFerranti DEM,
WorldClim, and Landsat
Boundaries based on GADM

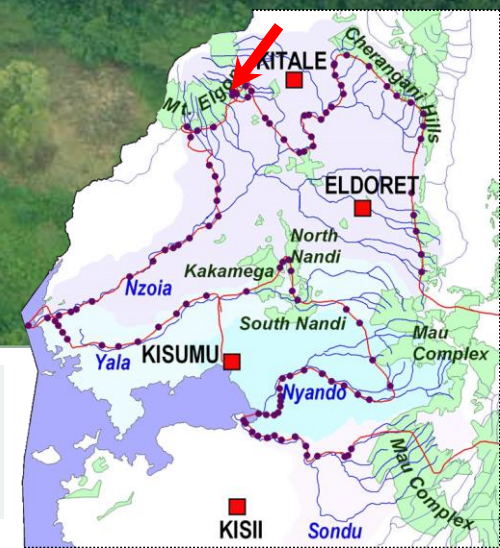
Projection: GCS_WGS_1984

Disclaimer: Boundaries and locations are
approximate and should not be
considered authoritative.



Mt. Elgon Forest Reserve

Failed Shamba-system; fragmented forest plantations



Pressures





MBALE CALL FOR UPSCALING ACTION

Don't Leave Mountains Behind

Galvanizes work on the ground and guide mountain- related interventions in ongoing international policy processes, including the implementation of the Paris Agreement on climate change and the SDGs, some targets of which explicitly mention mountains.





Made recommendations on policy, knowledge and action on the ground, targeting actors at Global, Regional and National levels in regards to sustainable mountain development



Various livelihood options as a result of better management of the ecosystems – EBA intervention



Over 165km of river banks demarcated and restored

Over 20 water source committees established and are functional

Over 10,000 Households directly participating in watershed management



River bank rehabilitation through natural regeneration and planting of indigenous tree species



6 community by-laws developed to govern the Environment Fund and NRs

Community policing



Flood management through construction of trenches, contour grass strips and tree planting

Over 1,800 households & land owners have adopted various soil and water conservation measures in the last 3 years



10% increase in household incomes as a result of increased yields and access to conservation fund



About 35 farmers adopted the use of simple and affordable irrigation technologies through the gravity flow scheme as an adaptation to the long dry spell in Sanzara parish

Building resilience through Irrigation tapped from the River Manafwa



Strengthening local natural resource governance through creating multi-stakeholder platforms for joint planning, lesson learning and demonstration



Over 370 community environmental action plans developed and implemented



Other ongoing and proposed initiatives



- Sustainable Mountain Development Strategy for Uganda launched
- Forest Investment Plan launched
- Mt Elgon Stakeholders Forum (comprising Political, technical and non-state actors)
- Research projects under Mountain Resource centre
- Ecosystem Based Adaptation project phase II
- Catchment management Plans prepared
- AfDB supported project on water supply and sanitation – restoration of ecosystems of water catchments to ensure continued sustainable water flow at all times.
- National Climate Change Policy adopted
- Disaster Preparedness and Management Policy adopted
- Territorial approaches to Climate Change

Conclusions and way forward



- Mount Elgon is one of the most researched mountains. Has also received considerable funding (both research and development).
- However, landslides continue (2010 Bududa, 2017 Sironko) and high poverty levels – why?
- Need for an integrated approach as well as direct involvement of local communities in the planning and execution of programmes
- Need to act differently and outside the box
- Need to control population and provide quality education for mountain populations
- Increase investment in infrastructure, tourism and agricultural value chains
- Restore degraded forest ecosystem
- **Need for continuity, political commitment, long term perspective and long term programmatic financing**

HAPPY INTERNATIONAL MOUNTAINS DAY
THANK YOU!

