



Asia Pacific Weekly Price Monitor  
Regional Office for Asia and the Pacific

15 February 2013



## Policy

### National

During 2012, **China's** central government increased public expenditure by 16.8 percent to support subsistence allowances targeting for rural and urban low income populations (Government of China, 12 February 2013).

## Prices

Over the past week staple food commodity prices remained relatively stable in all reporting countries, except for:

- In **Cambodia**, rice prices (mix variety) fell by 5 percent and chicken prices increased by 27 percent.
- In **Samoa**, taro palagi, ta'amu and banana prices increased by 38, 193 and 104 percent respectively, from December 2012 to January 2013. A strong demand for taro palagi and ta'amu pushed prices up, while a significant drop in banana supply (79%) drove prices significantly higher.

Technical note: Price changes are calculated from  $W_x$ , where  $W$ =week and  $x$  indicates the most recent week. The **one week** change is calculated as  $[(W_x/W_{x-1})-1]$ ; the **one month** change is calculated as  $[(W_x/\text{average}(W_{x-1}, W_{x-2}, W_{x-3}, W_{x-4}))-1]$ ; the **three months** change is calculated as  $[(W_x/\text{average}(W_{x-9}, W_{x-10}, W_{x-11}, W_{x-12}))-1]$ ; and the **one year** change is calculated as  $[(W_x/\text{average}(W_{x-49}, W_{x-50}, W_{x-51}, W_{x-52}))-1]$ . The criteria to flag unusual price movements are the following: **on a weekly basis**, nominal price variations below plus or minus 5 percent are considered "stable." **On a monthly basis**, nominal price variations below plus or minus 10 percent are considered "stable." **On an annual basis**, nominal price variations below plus or minus 25 percent are considered "stable."



## Price and policy information at country level

15 February 2013





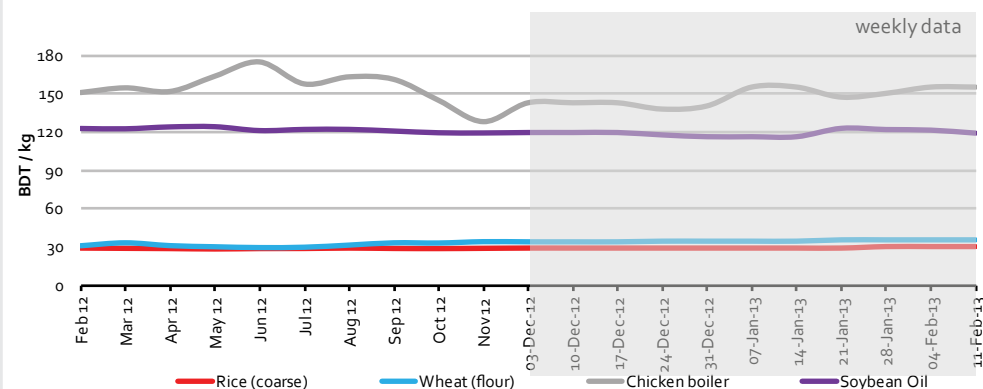
## BANGLADESH, Dhaka (11 February 2013)

Retail nominal prices

### Country Highlights

Staple food prices in Dhaka market remained relatively stable during over the previous week, except for:

- Chicken broiler prices were 16 percent above the levels observed three months ago.



Week of 11-Feb-13

% change

Food item	Market	Price (BDT/kg)	1 week	1 month	3 months	1 year
Coarse rice	Dhaka	30.5	0.0%	2.5%	5.2%	5.2%
Wheat flour	Dhaka	35.0	0.0%	0.7%	4.1%	12.0%
Chicken broiler	Dhaka	155.0	0.0%	2.1%	15.9%	1.2%
Soybean oil (BDT/ltr)	Dhaka	119.0	-2.1%	-1.3%	-0.6%	-3.3%

↑increase ↓decrease → stable (+/-5%ina weekly basis), (+/-10%in a monthly basis), and (+/-25%in an annual basis)

### Policy+

NA

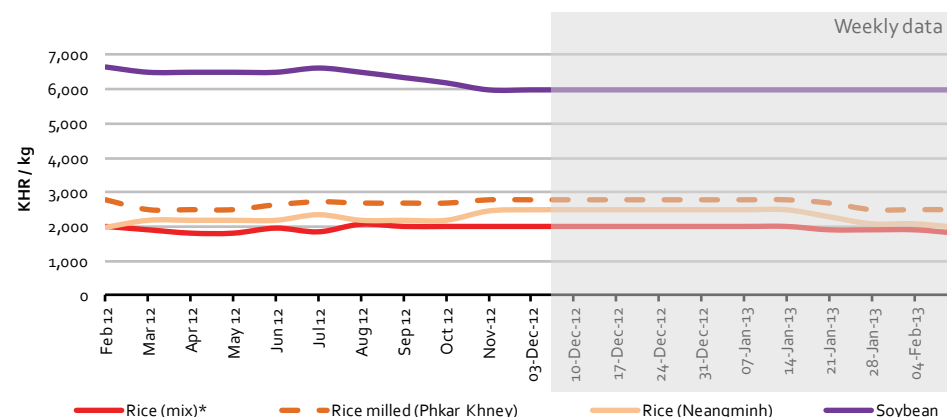


**CAMBODIA, Phnom Penh (11 February 2013)**  
Wholesale nominal prices

### Country Highlights

Staple food prices in Phnom Penh markets have remained relatively stable over the past week except for:

- Rice mix prices fell by 5 percent over the past week.
- Phakar Khney variety and Neangmingh (high quality rice) prices were 11 and 20 percent below the levels observed three months earlier, respectively.
- Chicken prices increased by 27 percent over the past week and were 40 percent above the prices observed three months ago.



Week of 11-Feb-13

% change

Food item	Market	Price (KHR/kg)	1 week	1 month	3 months	1 year
Rice (mix)	Phnom Pehn	1,800	-5.3%	-6.5%	-10.0%	-10.0%
Rice (Phkar Khney)	Phnom Pehn	2,500	0.0%	-4.8%	-10.7%	-8.3%
Rice (Neangmingh)	Phnom Pehn	2,000	-4.8%	-11.1%	-20.0%	-2.4%
Chicken	Phnom Pehn	28,000	27.3%	28.7%	40.0%	21.7%
Soybean oil	Phnom Pehn	6,000	0.0%	0.0%	0.0%	-8.7%

↑increase ↓decrease → stable (+/- 5% in a weekly basis), (+/- 10% in a monthly basis), and (+/- 25% in an annual basis)

### Policy+

NA

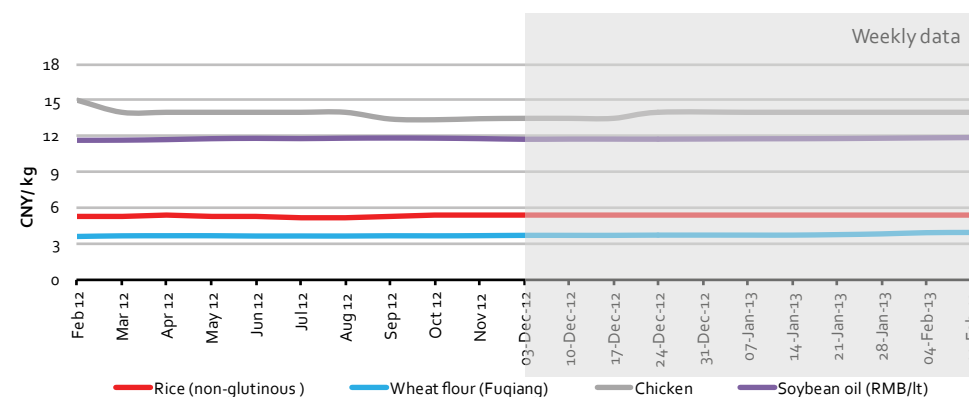


## CHINA, Beijing (11 February 2013)

Retail and wholesale nominal prices

### Country Highlights

Staple food prices in Beijing market remained relatively stable since 2012.



Week of 11-Feb-13

% change

Food item	Market	Price (RMB/kg)	1 week	1 month	3 months	1 year
Non-Glutinous Rice	Beijing	5.4	0.0%	0.0%	0.4%	2.1%
Fuqiang Wheat Flour	Beijing	3.9	0.5%	3.6%	6.7%	8.9%
Chicken (w)	Beijing	14.0	0.0%	0.0%	3.7%	-5.1%
Soybean oil RMB/lt	Beijing	11.8	0.2%	0.4%	0.8%	1.4%

↑increase ↓decrease → stable (+/-5% in a weekly basis), (+/-10% in a monthly basis), and (+/-25% in an annual basis)

### Policy+

During 2012, China's central government increased public expenditure by 16.8 percent to support subsistence allowances targeting for rural and urban low income populations (Government of China, 12 February 2013).

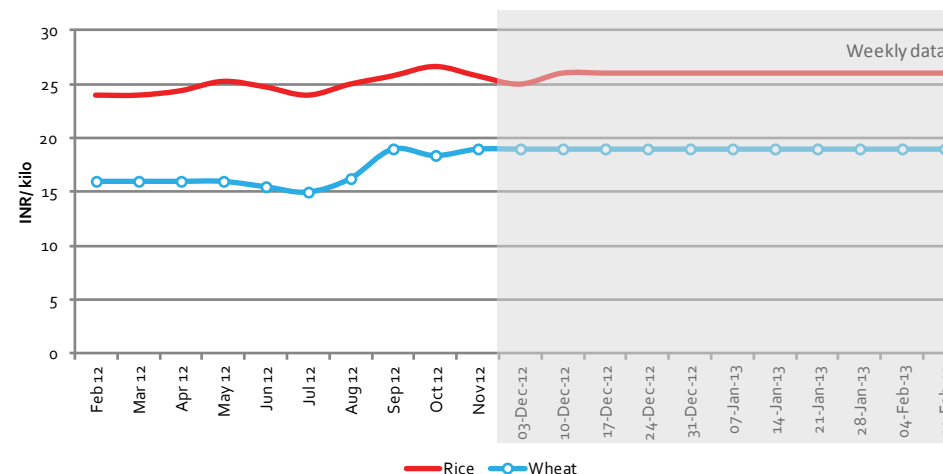


# INDIA, Delhi (11 February 2013)

Retail nominal prices

## Country Highlights

Staple food prices in Delhi markets have remained relatively stable over the past week.



Week of 11-Feb-13

% change

Food item	Market	Price (INR/kg)	1 week	1 month	3 months	1 year
Rice	New Delhi	26.0	0.0%	0.0%	2.0%	8.3%
Wheat	New Delhi	19.0	0.0%	0.0%	0.0%	18.8%

↑ increase ↓ decrease → stable (+/- 5% in a weekly basis), (+/- 10% in a monthly basis), and (+/- 25% in an annual basis)

## Policy+

NA

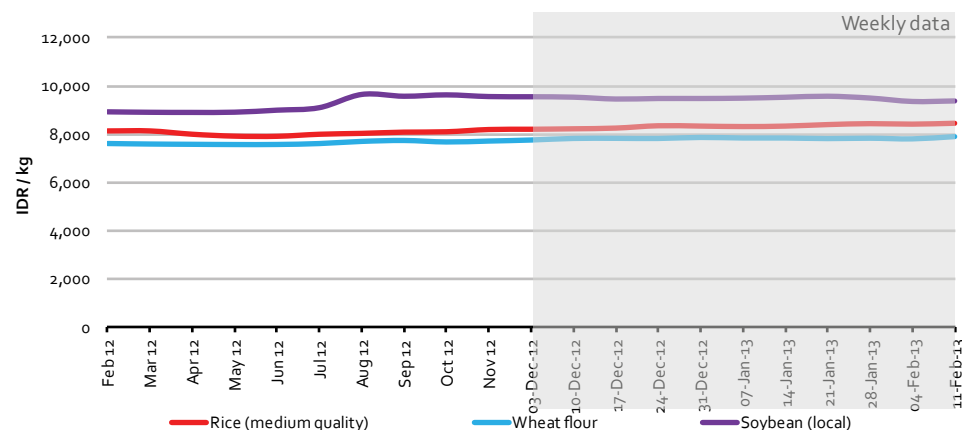


**INDONESIA, National Average (11 February 2013)**  
Retail nominal prices

### Country Highlights

Staple food prices in Indonesian markets have remained relatively stable over the past week.

- Chicken prices were 11 percent above the prices observed three months ago.



Week of 11-Feb-13

% change

Food item	Market	Price (IDR/kg)	1 week	1 month	3 months	1 year
Rice (medium quality)	National av	8,449	0.4%	0.7%	3.0%	3.8%
Wheat flour	National av	7,908	1.3%	1.0%	1.9%	4.0%
Chicken	National av	26,819	0.0%	-2.3%	11.3%	6.3%
Soybean (local)	National av	9,379	0.2%	-1.2%	-2.1%	5.4%

↑increase ↓decrease → stable (+/- 5% in a weekly basis), (+/- 0% in a monthly basis), and (+/- 25% in an annual basis)

### Policy+

NA





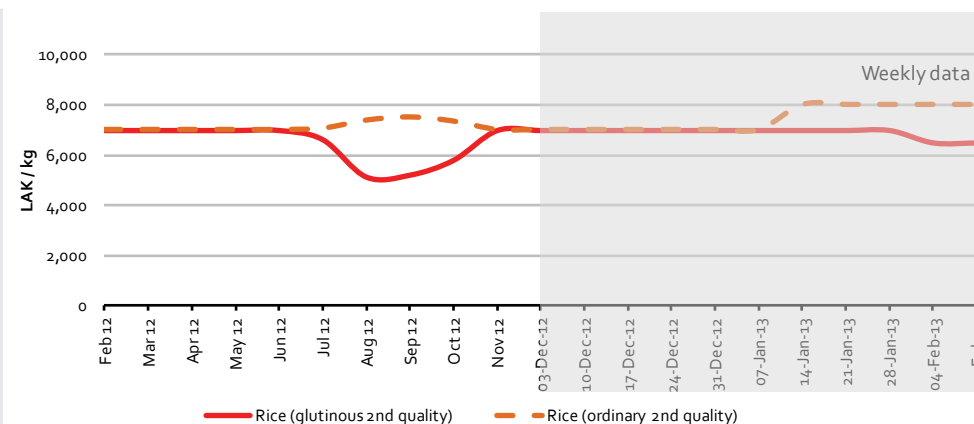
## LAO PDR, Vientiane (11 February 2013)

Retail nominal prices

### Country Highlights

Staple food prices in Vientiane markets were relatively stable during the previous week, except for:

- Ordinary rice prices were 14 percent above the prices registered three months ago.
- Chicken prices were 11 and 13 percent above the prices observed a month and three months ago.



Week of 11-Feb-13

% change

Food item	Market	Price (LAK/kg)	1 week	1 month	3 months	1 year
Rice glutinous	Vientiane	6,500	0.0%	-5.5%	-7.1%	-7.1%
Rice ordinary	Vientiane	8,000	0.0%	0.0%	14.3%	14.3%
Beef (2nd quality)	Vientiane	52,500	0.0%	-3.4%	1.0%	16.7%
Pork (2nd quality)	Vientiane	31,750	0.0%	-0.6%	-0.8%	-0.8%
Chicken	Vientiane	42,500	0.0%	10.7%	13.3%	-5.6%

↑increase ↓decrease → stable (+/- 5% in a weekly basis), (+/- 0% in a monthly basis), and (+/- 25% in an annual basis)

### Policy+

NA



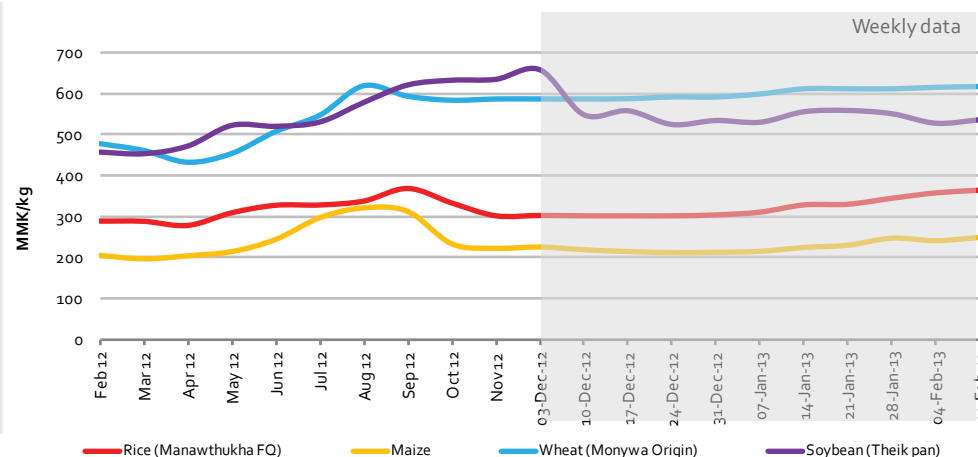
## MYANMAR, Yangon and Mandalay (11 February 2013)

Wholesale nominal prices

### Country Highlights

Staple food prices in Yangon and Mandalay were relatively stable over the past week.

- Rice prices were 20 percent above the prices observed three months ago.
- Maize prices were 11 percent above those observed three months ago.
- Soybean prices were 13 percent below the prices registered three months ago.



Week of 11-Feb-13

% change

Food item	Market	Price (MMK/kg)	1 week	1 month	3 months	1 year
Rice (Manawthukha FO)	Yangon	362	1.7%	7.0%	20.1%	25.5%
Wheat (Monywa Origin)	Mandalay	618	0.3%	0.8%	5.2%	30.4%
Maize	Mandalay	249	3.3%	5.6%	10.6%	23.3%
Groundnut oil (Special)	Yangon	2,368	1.8%	1.1%	-2.7%	10.3%
Soybean (Theik pan)	Yangon	535	1.7%	-2.1%	-13.3%	16.6%
Palm oil	Mandalay	868	-0.7%	1.0%	3.4%	-18.1%

↑increase ↓decrease → stable (+/- 5% in a weekly basis), (+/- 10% in a monthly basis), and (+/- 25% in an annual basis)

### Policy+

NA



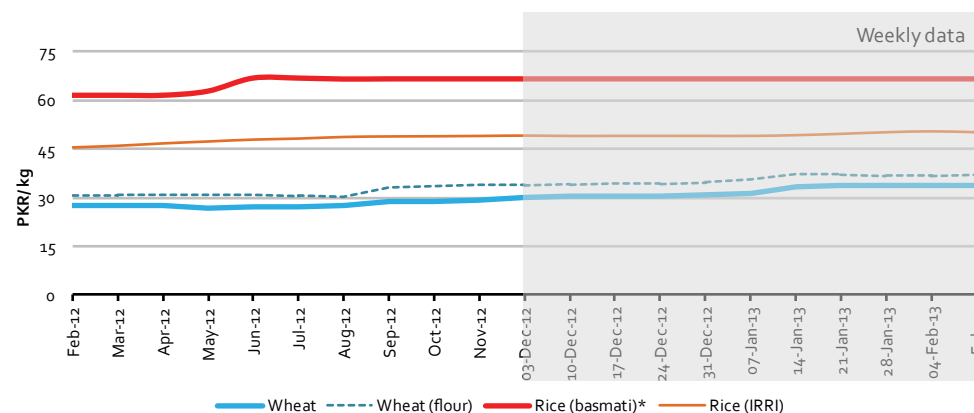
## PAKISTAN, Karachi (11 February 2013)

Retail nominal prices

### Country Highlights

Staple food prices in Karachi market remained stable over the first week of 2013.

- Wheat prices were 13 percent higher than those prices observed three months ago.



Week of 11-Feb-13

% change

Food item	Market	Price (PKR/kg)	1 week	1 month	3 months	1 year
Rice (basmati)	Karachi	66.5	0.0%	0.0%	0.0%	8.1%
Rice (IRRI)	Karachi	50.4	-0.6%	0.6%	2.2%	10.5%
Wheat	Karachi	33.7	0.2%	0.2%	13.2%	22.6%
Wheat flour	Karachi	37.0	0.7%	0.1%	8.7%	20.1%

↑increase ↓decrease → stable (+/-5% in a weekly basis), (+/-10% in a monthly basis), and (+/-25% in an annual basis)

### Policy+

NA

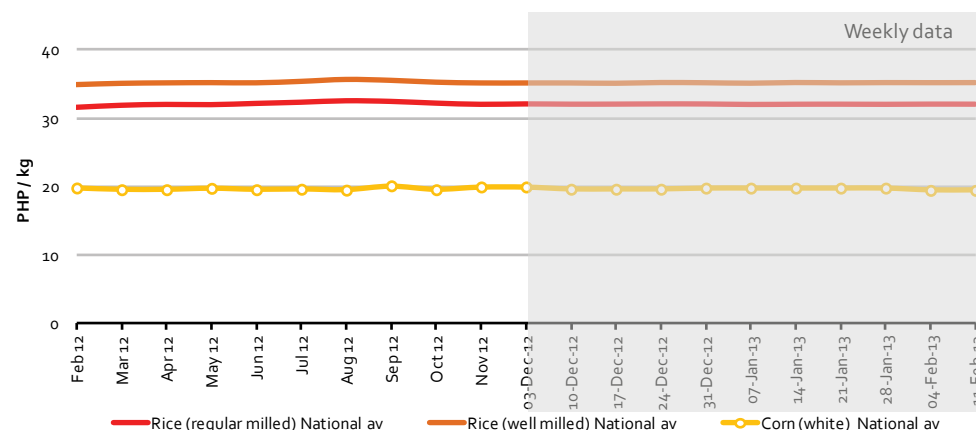


## PHILIPPINES, National average and Metro Manila (11 February 2013)

Retail nominal prices

### Country Highlights

Staple food prices in the Philippines have remained largely stable since early 2012.



Week of 11-Feb-13

% change

Food item	Market	Price (PHP/kg)	1 week	1 month	3 months	1 year
Rice (regular milled)	National av	32.0	0.0%	0.0%	0.0%	1.4%
Rice (well milled)	National av	35.3	0.0%	0.0%	0.1%	0.7%
Corn (white)	National av	19.5	0.0%	-1.3%	-2.1%	-1.8%
Rice (regular milled)	Metro Manila	30.0	0.0%	0.0%	0.0%	0.0%
Rice (well milled)	Metro Manila	35.0	0.0%	0.0%	0.0%	0.0%

↑ increase ↓ decrease → stable (+/- 5% in a weekly basis), (+/- 0% in a monthly basis), and (+/- 25% in an annual basis)

### Policy+

The Department of Agriculture continues to provide support to increase production of fresh milk through sustained dairy herd build-up through intensified upgrading and preservation of local stock, augmented by importation of dairy animals, embryos and equipment, and establishment of more multiplier and grow-out farms (Ministry of Agriculture, 11 February 2013).



## SAMOA, National Average (January 2013)

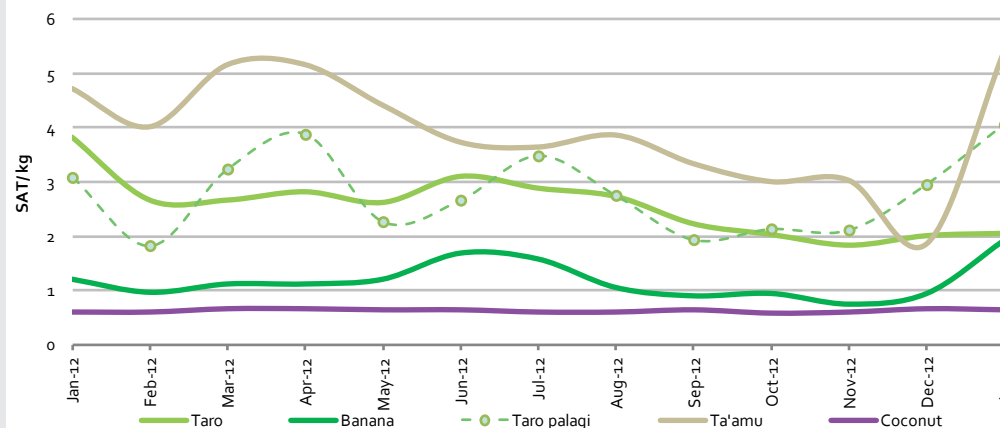
Retail nominal prices

### Country Highlights

Food staple prices present diverging trends for January 2013.

- Taro palagi, ta'amu and banana prices increased by 38, 193 and 104 percent respectively, from December 2012 to January 2013.

A strong demand for taro palagi and ta'amu pushed prices up, while a significant drop in banana supply (79%) drove prices significantly downwards.



Month of Jan-13

% change

Food item	Market	Price (SAT/kg)	1 month	3 months	1 year	3 years
Taro	Fugalei	2.1	2.0%	1.1%	-46.6%	-7.9%
Taro palagi	Fugalei	4.1	37.6%	89.9%	31.5%	70.5%
Ta'amu	Fugalei	5.4	193.0%	80.8%	14.9%	110.1%
Coconut	Fugalei	0.6	-3.0%	11.7%	7.5%	11.7%
Banana	Fugalei	1.9	104.2%	104.6%	60.0%	125.6%

↑increase ↓decrease → stable (+/- 5% in a weekly basis), (+/- 10% in a monthly basis), and (+/- 25% in an annual basis)

### Policy+

NA

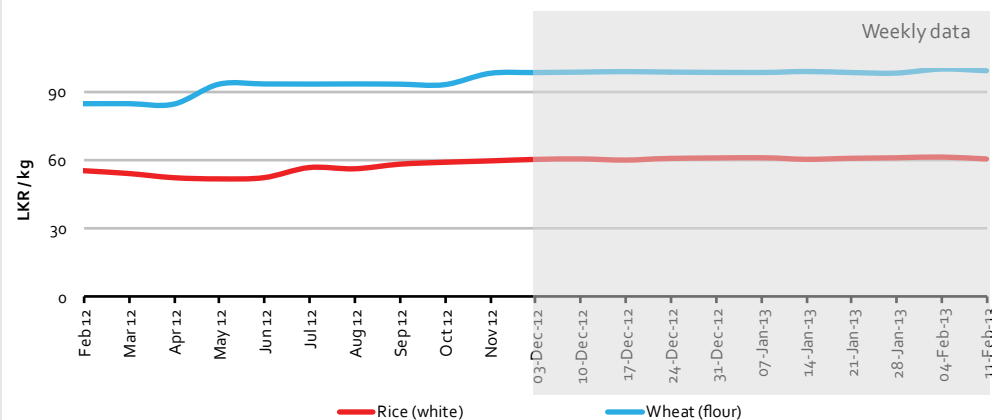


## SRI-LANKA, Colombo (11 February 2013)

Retail nominal prices

### Country Highlights

Staple prices in Colombo were relatively stable over the past week.



### Policy+

NA

Week of 11-Feb-13

% change

Food item	Market	Price (LKR/kg)	1 week	1 month	3 months	1 year
Rice (white)	Colombo	60.7	-1.4%	-0.6%	0.7%	10.2%
Wheat flour	Colombo	99.1	-0.7%	0.4%	0.8%	16.9%

↑increase ↓decrease → stable (+/- 5% in a weekly basis), (+/- 10% in a monthly basis), and (+/- 25% in an annual basis)



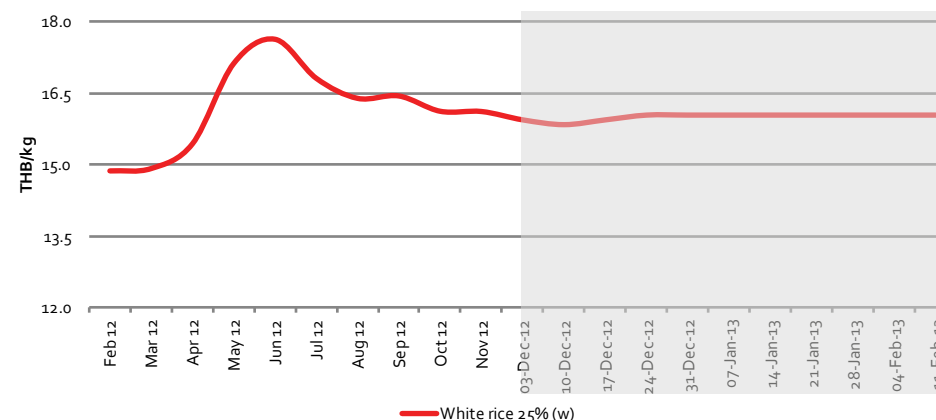
## THAILAND, Bangkok (11 February 2013)

Nominal prices

### Country Highlights

Overall, staple food prices in Bangkok have remained largely stable during the previous week.

- Pork prices were 19 percent higher than the levels observed three months ago.



Food item	Market	Price (THB/kg)	1 week	1 month	3 months	1 year
White rice 25% (w)	Bangkok	16.1	0.0%	0.0%	0.6%	8.0%
Chicken	Bangkok	62.5	-1.6%	-1.6%	-1.6%	-15.3%
Pork tenderloin	Bangkok	142.5	0.0%	1.8%	18.8%	16.3%
Soybean oil (Baht/lit)	Bangkok	55.0	0.0%	0.0%	0.0%	0.0%

↑increase ↓decrease → stable (+/- 5% in a weekly basis), (+/- 10% in a monthly basis), and (+/- 25% in an annual basis)

Retail nominal prices, except for (w), which means wholesale nominal prices.

### Policy+

NA

## Disclaimer and Acknowledgements

The Asia Pacific Weekly Price Monitor is prepared with information from official and non-official sources by the Economic, Social and Policy Assistance Group (ESP).

Conditions can change rapidly and information may not always represent the current food price situation as of the present date. As policy information is based on official and non-official sources, not all of them should be taken as official government position. The designations employed and the presentation of material in this report do not imply the expression of any opinion whatsoever on the part of the Food and Agriculture Organization of the United Nations concerning the legal status of any country, territory, city or area or of its authorities, or concerning the delimitation of its frontiers or boundaries. The support of FAO Country Offices and FAO's Food and Agriculture Policy Decision Analysis (FAPDA) are gratefully acknowledged for their contributions.

To subscribe, please (1) e-mail [Listserv@listserv.fao.org](mailto:Listserv@listserv.fao.org), (2) leave the subject blank, and (3) type subscribe "Food-Asia-L"  
For further enquiries, please contact [AP-Weekly-Price-Monitor@fao.org](mailto:AP-Weekly-Price-Monitor@fao.org)

I sincerely hope this weekly report is useful and meets your expectations.

Yours sincerely,  
Hiroyuki Konuma  
Assistant Director-General and  
Regional Representative for Asia and the Pacific