

DAY 3

SDD WORKSHOP

Region Asia-Pacific (RAP)


Food and Agriculture
Organization (FAO)

Bangkok, November 15, 2012

GASF APPLICATIONS

Mr. Esther Wiegers



- 
- Reviewed the tabulations in Cambodia, Lao PDR & Vietnam
 - Discussed the importance of interpreting the data
 - Insights from data on trends and patterns
 - How data informs and feeds in to POLICY



RAPt Attention



Clarifications and strong engagement in the discussion



ADEPT

Mr. Seeva Ramasawmy

- Participants became adept on ADEPT
- FNS Food for thought and nutrition for the soul
 - Or rather.... Feeding the data and nourishing the analysis
- The sales pitch or donor generosity?
- Summer fun –
- Caring women....







Sub-regional Workshop on Sex-Disaggregated
Data in Agriculture and Rural Development for
Southeast Asian Countries
13-16 November 2012
Amari Watergate Bangkok

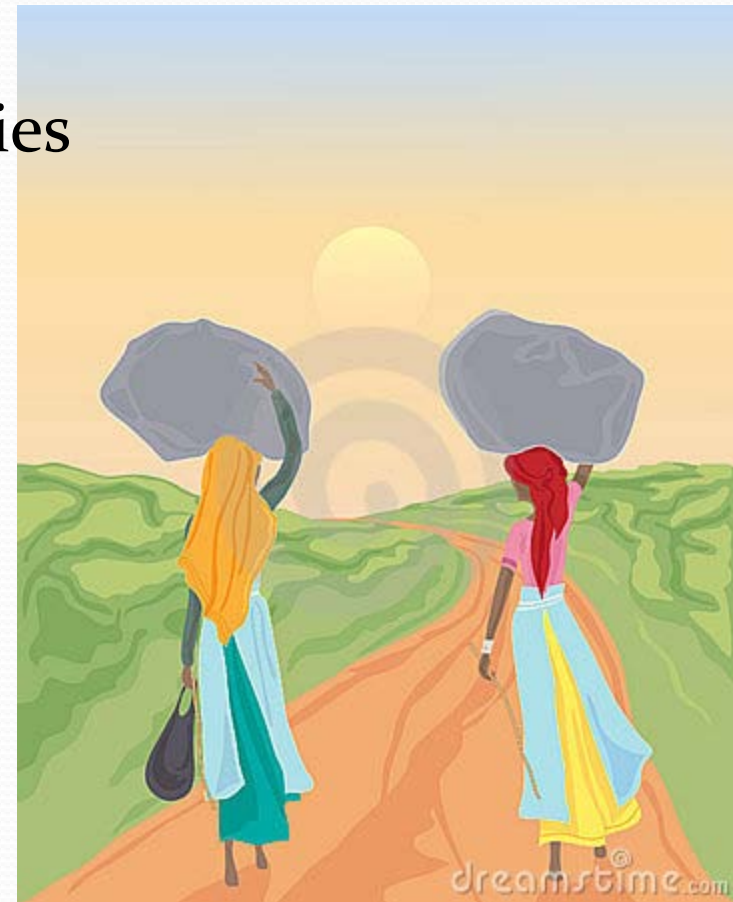


13-16 November 2012
Amari Watergate Bangkok



Agri-Gender Tool

- For capacity development of NSO staff
 - Data on the gender gap
 - To better understand the disparities
 - For evidence-driven policy
-
- 9 core data items
 - Importance of analysis
 - RAP version?



NINE DATA ITEMS

Agricultural population and households

Access to productive resources

Production and productivity

Destination of agricultural produce

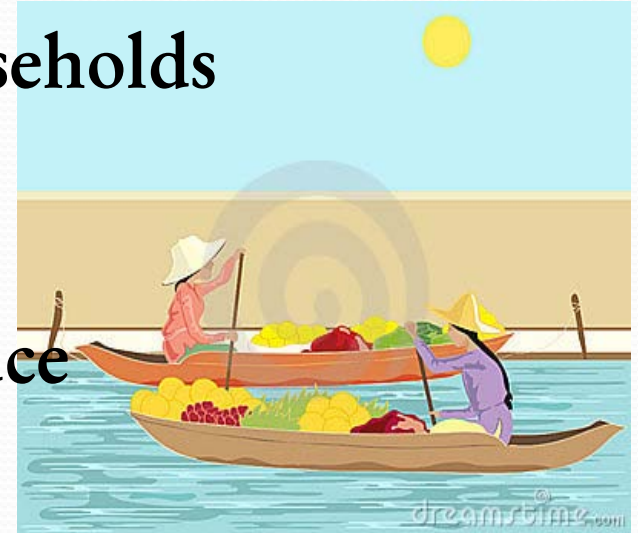
Labour and time-use

Income and expenditures

Membership in agricultural/farmer organisations

Food security

Poverty indicators



Practical exercise

- ❖ Intense focus
- ❖ Expert advice



Careful Review





CROSS-COUNTRY COMPARISONS & Exchange of ideas



Good job on Day 3!

Thank you!

Reflection - Day 3

Sub-regional workshop on Sex-Disaggregated Data in
Agriculture and Rural Development for Southeast
Asian Countries

13-16 Nov 2012

What we liked...

- Good presentations and practical information for participants (Toolkit, GAFS)
- Exercise of identify the listed gender indicators by using real data

Room for improvement

- Standardization of gender indicator for different countries/communities
- Use of data in much (especially designed other objective) generous may lead misunderstandings
- Follow-up survey for AC
- More information on tool/programme
- Time for relax!!!