

# Technical Capacity: Advances in National Forest Monitoring Systems

Partner Event  
What has REDD+ done for us?

No Regrets Benefits of REDD+ Readiness for the Forest Sector  
Asia Pacific Forest Commission (APFC) meeting  
3 – 8 November 2013, Rotorua New Zealand

Gewa Gamoga  
PNG Forest Authority  
[ggamoga@pngfa.gov.pg](mailto:ggamoga@pngfa.gov.pg)

# Presentation Outline

1. On-going REDD+ Readiness Activities (in the context of Forest Monitoring) in PNG
2. What have we achieve from the readiness activities

# On-going REDD+ Readiness efforts (in the context of Forest Monitoring) in PNG

- Number of initiatives are currently being done for REDD+ readiness at the national scale.

Initiatives	Development Partner
<ul style="list-style-type: none"><li>➤ Forest Base map Development</li><li>➤ Capacity Development on Forest Monitoring for Addressing Climate Change in PNG</li><li>➤ The monitoring system of forest resource including carbon stock</li></ul>	JICA Technical Cooperation Project & Grand Aid Forest Preservation Program
<ul style="list-style-type: none"><li>➤ Multi-purpose National Forest Inventory</li></ul>	European Union & UNREDD
<ul style="list-style-type: none"><li>➤ Measurement Reporting Verification</li></ul>	UNREDD

## ONGOING ACTIVITIES:



- **NEW 2011 Forest Map:** coordinated by PNG Forest Authority with technical support from JICA. This map will be use as baseline to assess past and future forest changes;



- **1<sup>st</sup> National Forest Inventory:** coordinated by PNG Forest Authority with technical support from UN-REDD. The NFI it will be the key element to assess forest related emission/removal factors



- **1<sup>st</sup> Information, Monitoring & MRV Action Plan:** coordinated by OCCD participation of all relevant country institutions and relevant stakeholders;



- **Prototype for a Satellite Land Monitoring System:** coordinated by OCCD with technical support from UN-REDD and INPE. A team of PNG experts has attended a course in Brazil, the beta version of the prototype with its web-portal have been presented in Durban in COP17

# JICA Technical Cooperation Project

- Govt of Japan Support to PNG
  - Capacity development on forest resource monitoring to address climate change in PMG
- Executing agent
  - PNG Forest Authority

# Government of Japan (GOJ) Support to PNG

## (1) GOJ Grant Aid Program:

Provided:

1. Remote Sensing GIS facility
2. Satellite Images
3. Airborne data
4. Field survey equipment
5. Soft component (additional Technical Assistance)

## (2) JICA Technical Cooperation Project

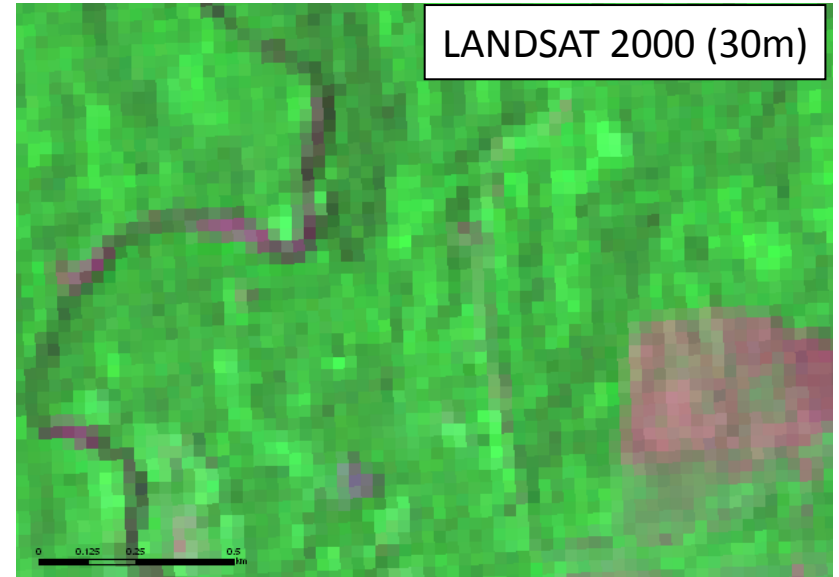
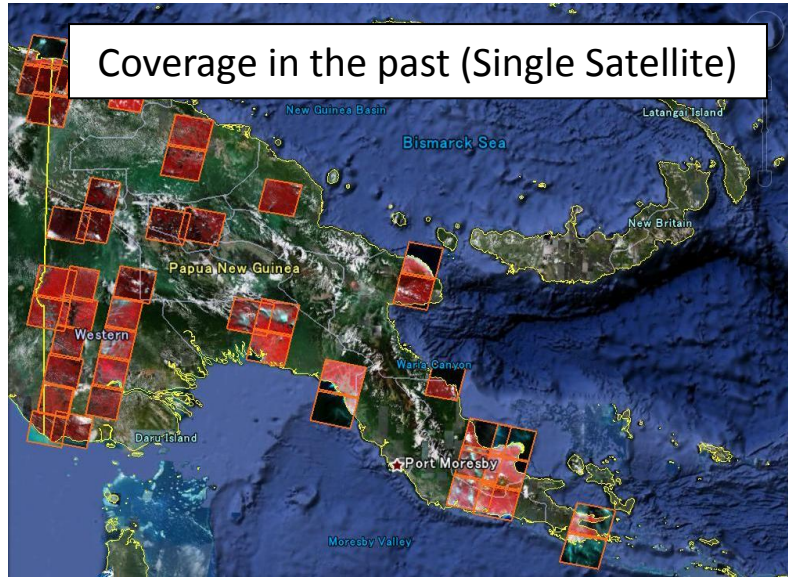
Objective:

To enhance the capacity of relevant institutions in PNG for monitoring of nation-wide forest resource including carbon stock to address climate change

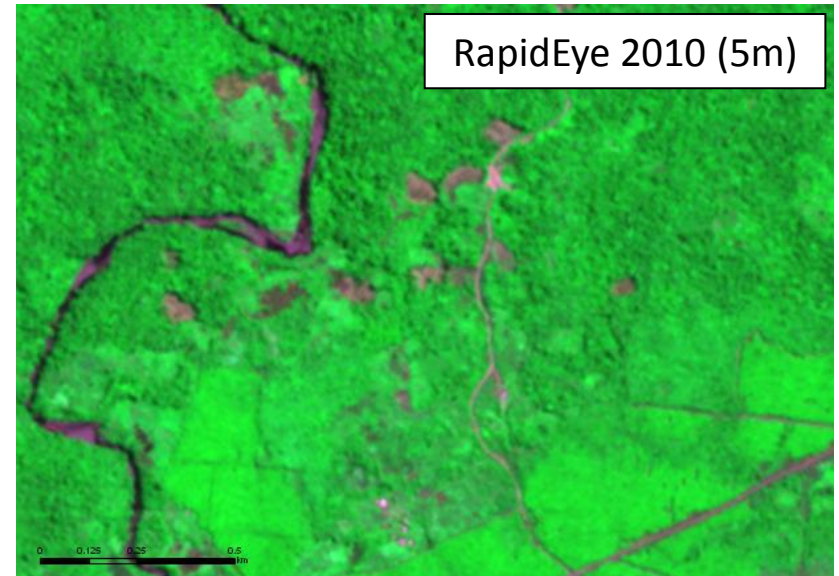
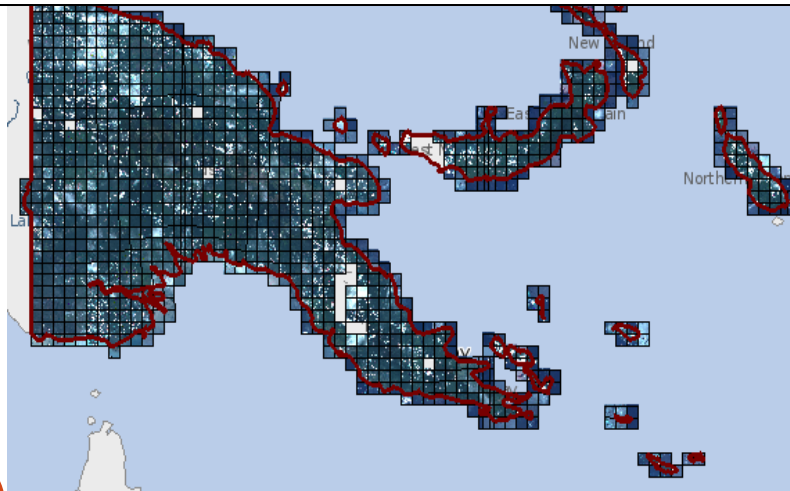
Expected Output:

1. Nationwide forest base map
2. National level forest resource database
3. Monitoring system of forest resource – including carbon stock

# JICA Project Output: RapidEye Coverage over PNG (Jul. 2010 to Aug. 2011)

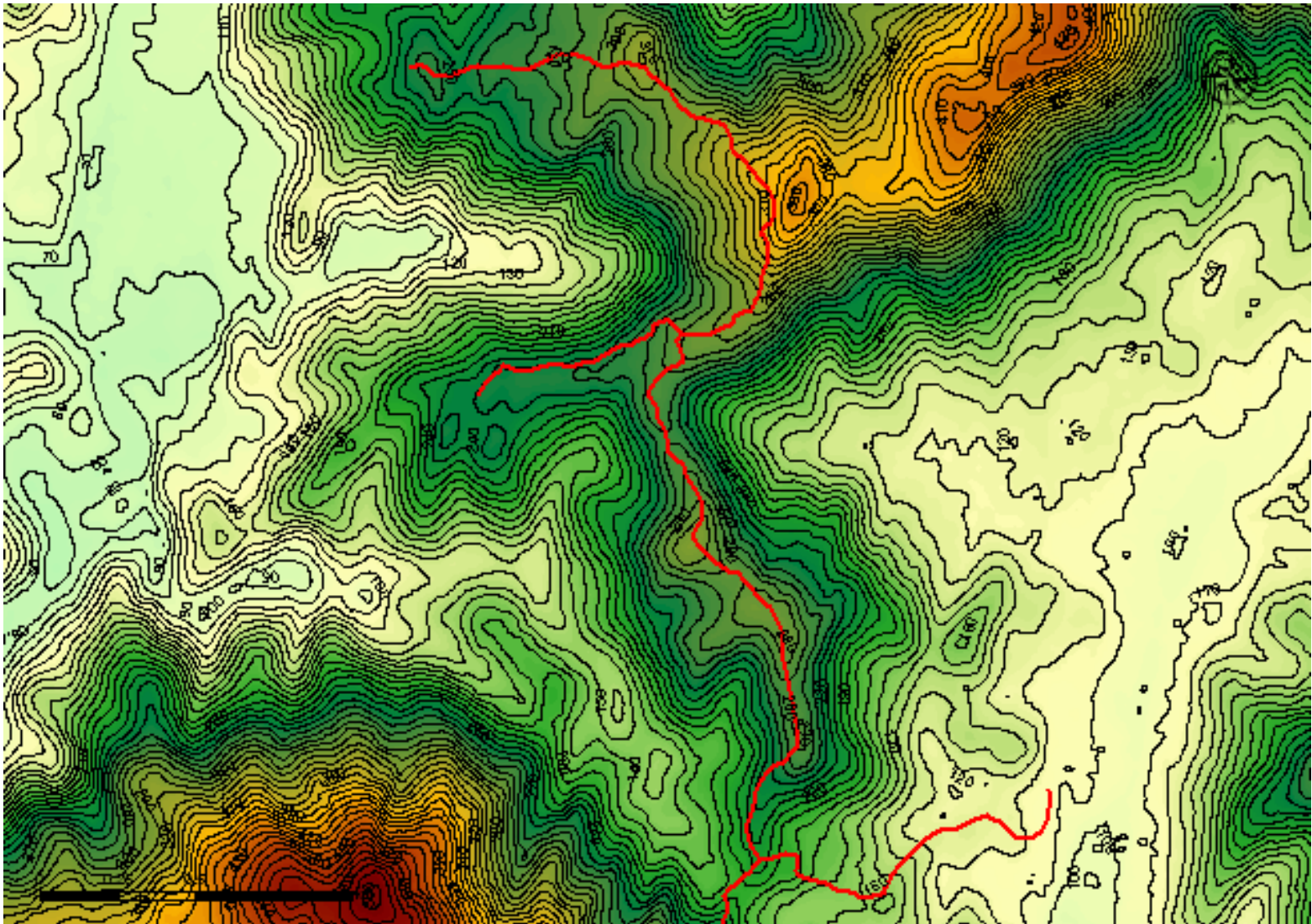


Present: Coverage 2010 (Constellation Satellites)





## JICA Project Output: DEM derived contours (10m interval) & logging road

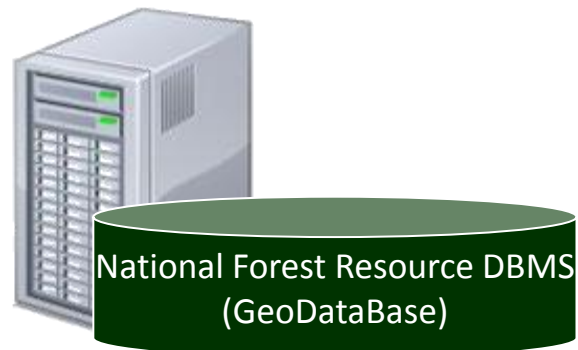




# JICA Project Output: PNGFA New Database: System/Hardware Composition

## [Data Server]

- ArcGIS Server 10.0  
Standard/Enterprise
- SQL Server 2008  
Standard Edition(English)

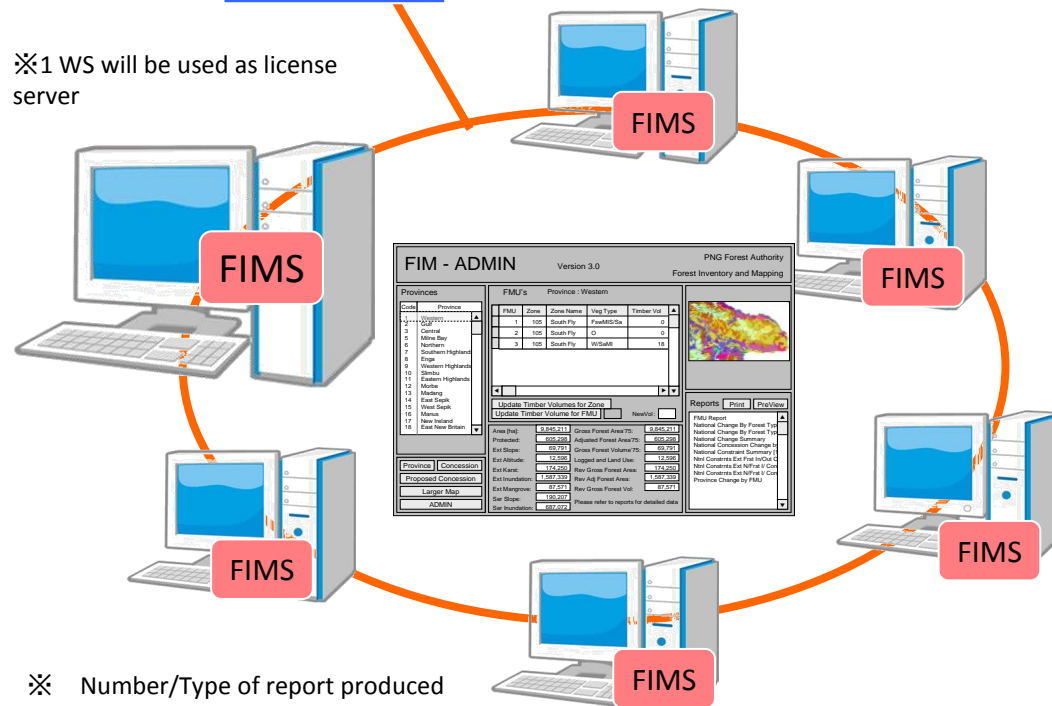


Domain Setting

※ 1 WS will be used as license server

## [Desktop PC]

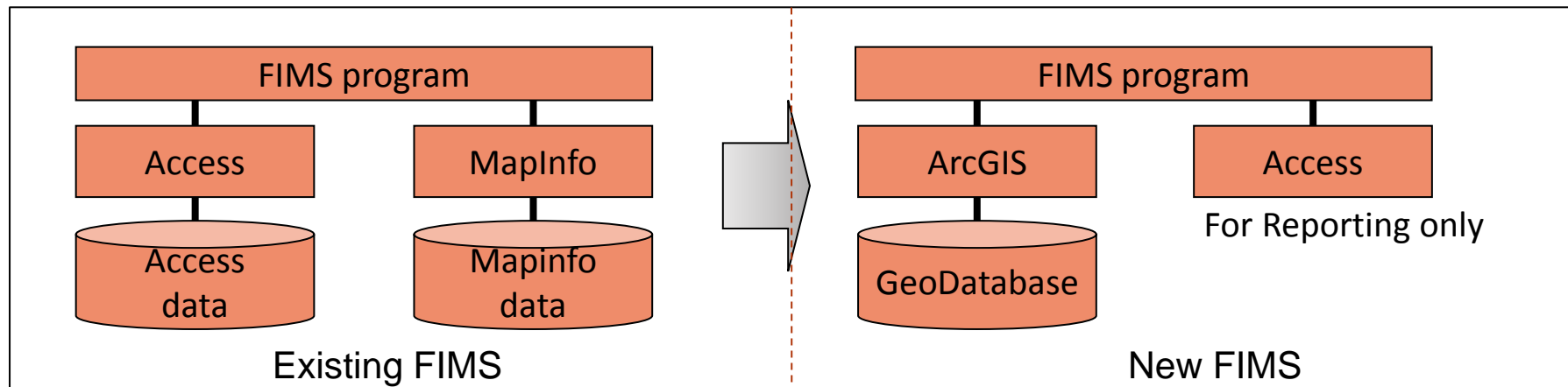
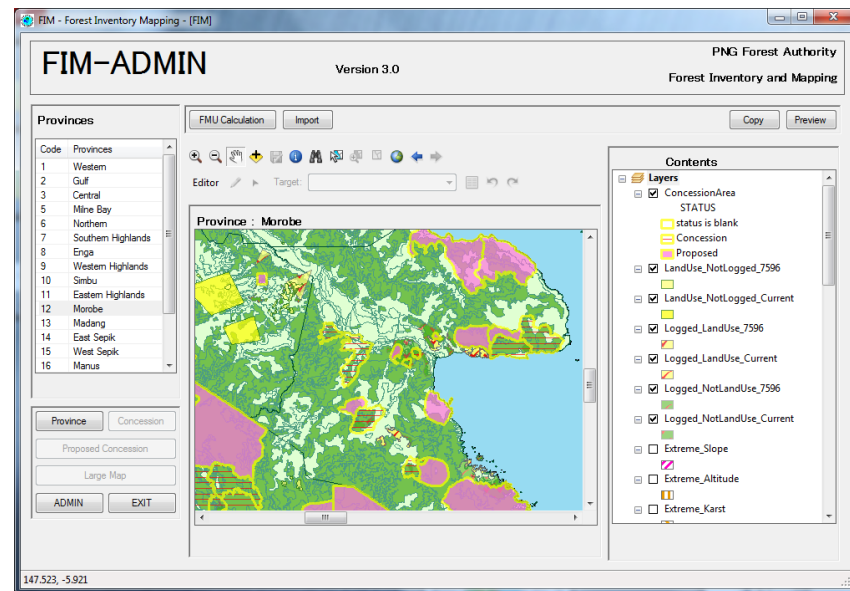
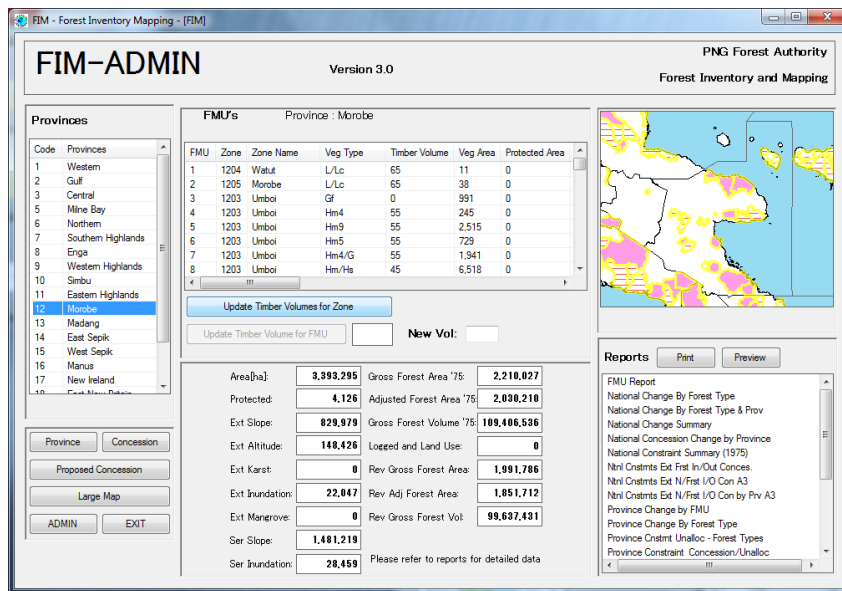
- ArcGIS Desktop 10.0  
ArcInfo 2  
ArcEditor 2  
ArcView 2
- Microsoft Office 2010  
Professional(English)



※ Number/Type of report produced from FIMS will be about 30

# JICA Project Out put New FIMS (ArcGIS version): Screen Image

- GUI and the functions of the existing FIMS have been incorporated



# National Forest Inventory (NFI)

- It will be the first NFI for the country

# Background

- **Funding**
  - EU and UNREDD Program
- **Project title**
  - Technical support to the PNG Forest Authority to implement a multi-purpose **National Forest Inventory**
- **Period**
  - October 2013 – September 2016
- **Support & Implementation**
  - **FAO** (Forest Dept) is supporting **PNG Forest Authority** to implement the project

# Background

- **The project overall objective**
  - is to contribute to the implementation of PNG's policies and measures for climate change mitigation.
- **The purpose**
  - is to support the PNG Forest Authority to implement a continuous and multi-purpose National Forest Inventory (NFI) as part of a National Forest Monitoring System that will fulfil the UNFCCC Cancun and Copenhagen decision requests

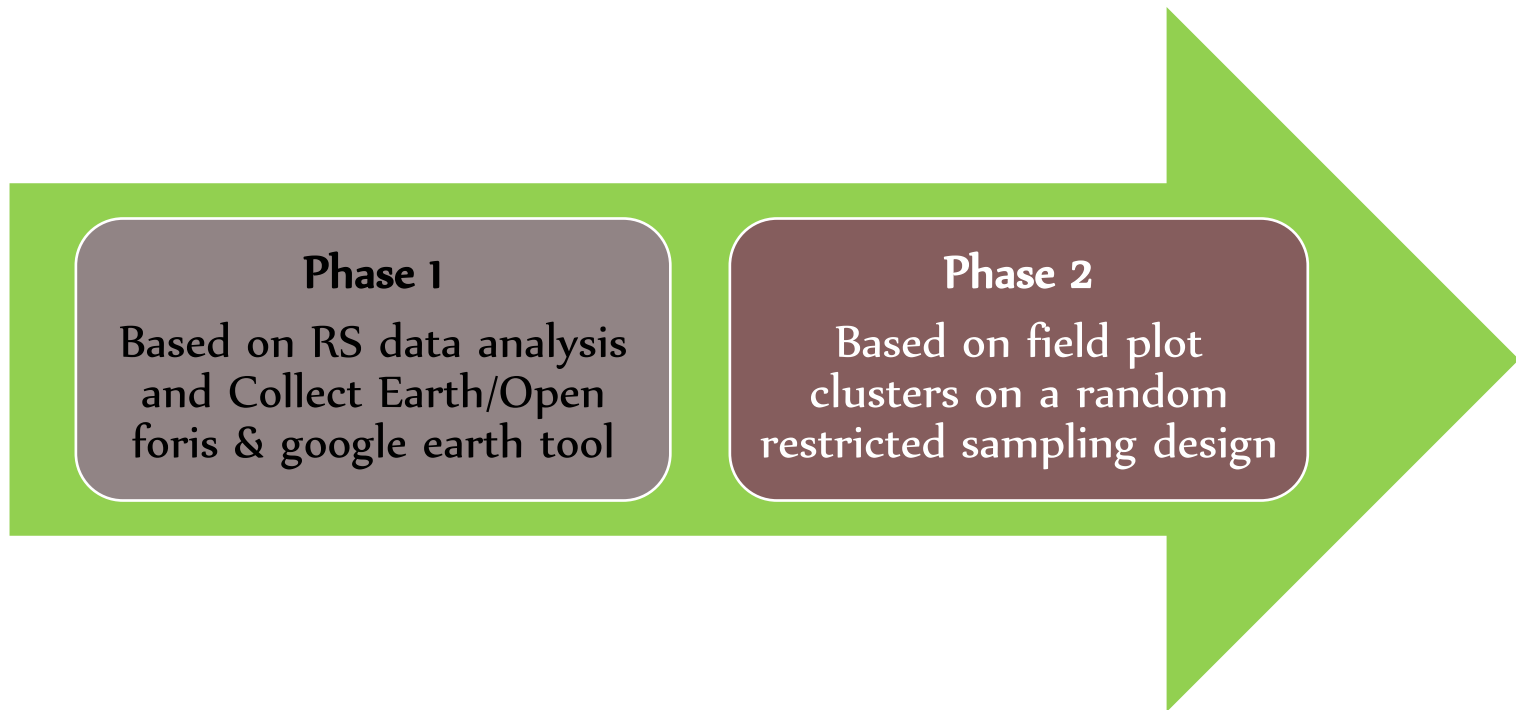
# Background

- **Key features of this project**
  - **Capacity building** to improve the capabilities of the PNG Forest Authority and the University of Technology-Department of Forestry on continuous and multi-purpose forest monitoring systems.
  - **Capacity development** to establish the first multi-purpose National Forest Inventory of PNG
  - NFI Information and Data Sharing System Development
  - **Support to research and education** activities on PNG forests.
  - **Promote policy dialogue** on forestry.



# Inventory Approach

- PNG has taken a double sampling approach



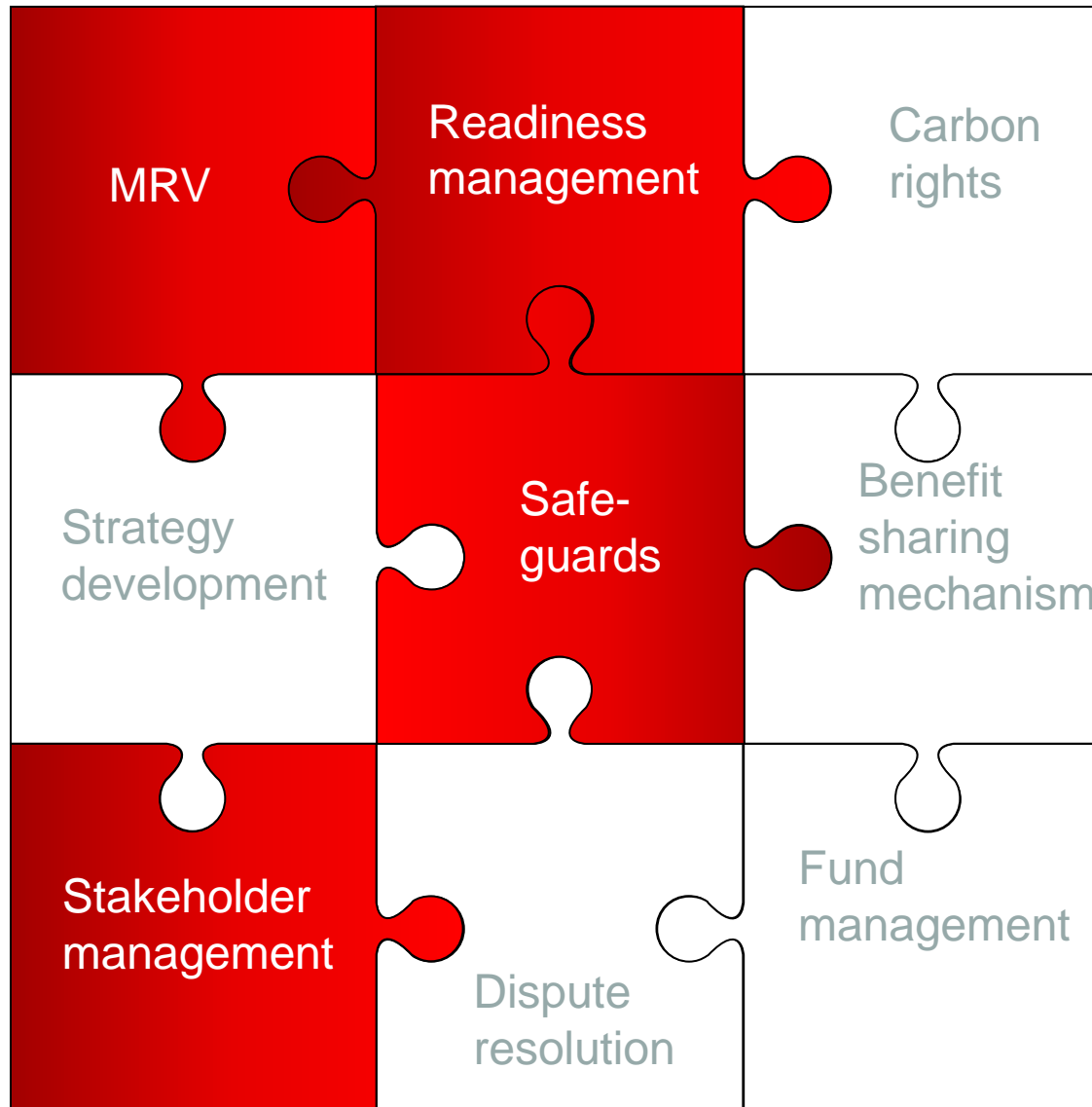
# NFI – Progress to date

- Refresher training on plant species identification
- Collect Earth software customized to suit PNG situation
- Collect Earth software training
- Assessing land use and forest cover

# UNREDD Program

# The UN-REDD National Programme is just one contribution to PNG's readiness efforts

 UN-REDD



# Objectives of PNG's UN-REDD National Program



- Support the Government of PNG to progress its activities towards REDD+ readiness
- Complement existing efforts to establish a REDD-plus framework in PNG, including efforts from GoPNG, civil society, the private sector and development partners
- Focus on the refinement and implementation of a full MRV roadmap for PNG that supports PNG's overall REDD framework and readiness efforts

# What have we achieved from the readiness activities

1. On-going technical capacity development on;
  - GIS/Remote sensing applications, tools and information
  - NFI Planning
  - Understanding of REDD+ and climate change issues
  - Forest carbon assessment
2. GIS hardware/software
3. Improve forest database management system
4. Forest Base Map (version 0)
5. DEM derived contours (10m intervals)
  - For planning and management

Regardless of the outcomes of the Climate Change negotiations, the above benefit will be useful in managing our forests in a long term



**END**