



Indonesia Forest Gender Mainstreaming: *Scaling up Best Practices*

Presented at the 25th Asia-Pacific Forestry Commission - APFC,
4-8 November 2013: “Regional Workshop on Gender
Mainstreaming in National Forest Policies, Rotorua, New Zealand.

Dr. YETTI RUSLI, M. Sc.

-Senior Adviser To The Minister of Forestry on Environment &
Climate Change; Chairperson of Climate Change Working Group,
Ministry of Forestry Indonesia.

- Chairperson of the LULUCF Working Group, Indonesia National
Council on Climate Change



FLOW OF THOUGHT

Background:

- Forests for our planet earth, Forests & CC;
- Gender Mainstreaming

Indonesia Forests

- 15 years Rate Deforestation & detect drivers; Least cost (not low hanging fruit); scaling up best practices (innovation Green Energy/SFM+ Tech, Agroforestry.—CO2 removal, C Stock, Green Products)
- Forests, Climate Change, REDD+ (Bali Action Plan), Commitment of reducing emission, and promote potential of green development (by 2020: 26%-41%).VAP with EU Signed

FLOW OF THOUGHT..continue

FORESTS & GENDER MAINSTREAMING

- Current program
- Future challenges

GENDER AT GLOBAL

- Gender at MDGs and Sustainable DGs post 2015
- Gender Mainstreaming, ECOSOC - July 1997
- Gender - Basic Concept, FAO
- Gender – Forestry, UNFF
- Gender – Climate Change UNFCCC

FOREST 300 YEARS AGO & FOREST 300 YEARS IN THE FUTURE

Jürgen Blaser

Based on the Paper: *Forests in the next 300 years*

Prepared by J. Blaser and H. Gregersen

UNASYLVA 240, Vol. 64: 61-73, 2013

"The Quadruple Squeeze"



Need for materials - Raise of Wood Fibre: Tree cracking – from macro to mini scale



© Ohto Nuottamo, modified



TOWARD GREEN DEVELOPMENT: FORESTRY AND CLIMATE CHANGE ~ REDD+ (BAP 1.b.iii) CO2 or C Cycle

80 %
CO2



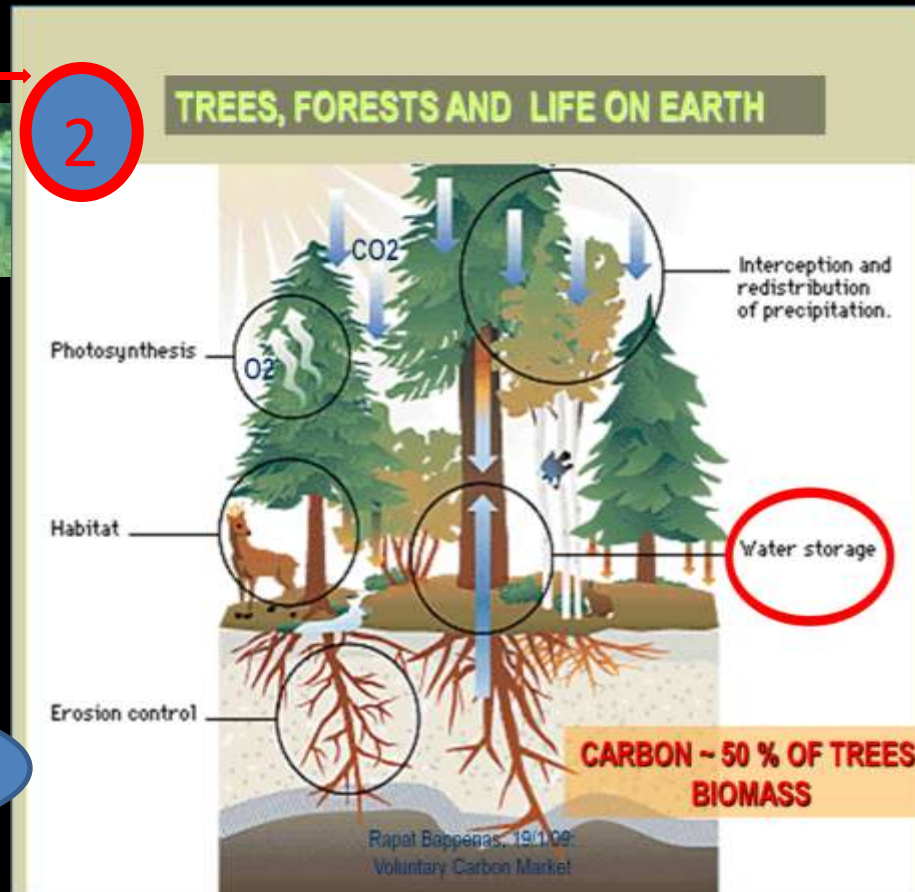
20 %
CO2



SEQUESTRATION OF
CO2 (REMOVAL)

SOURCE OF CO2

BOIMASS FOR
GREEN LIVING



You will
not
cleaning
every
single
dust,
In order
to start
upgrading
your
house

Indonesia's Forests Land Use System: In the past, Today and Tomorrow's Future Possible Value

Forest Land Uses System (improved, since Dutch colonial):

Conservation Forests

25.3 m ha.

Protected Forests

30,9 m ha

Production Forests

80.4 m ha

Community/ private Forests



Ecosystem/
Environment

Services/
Commodity

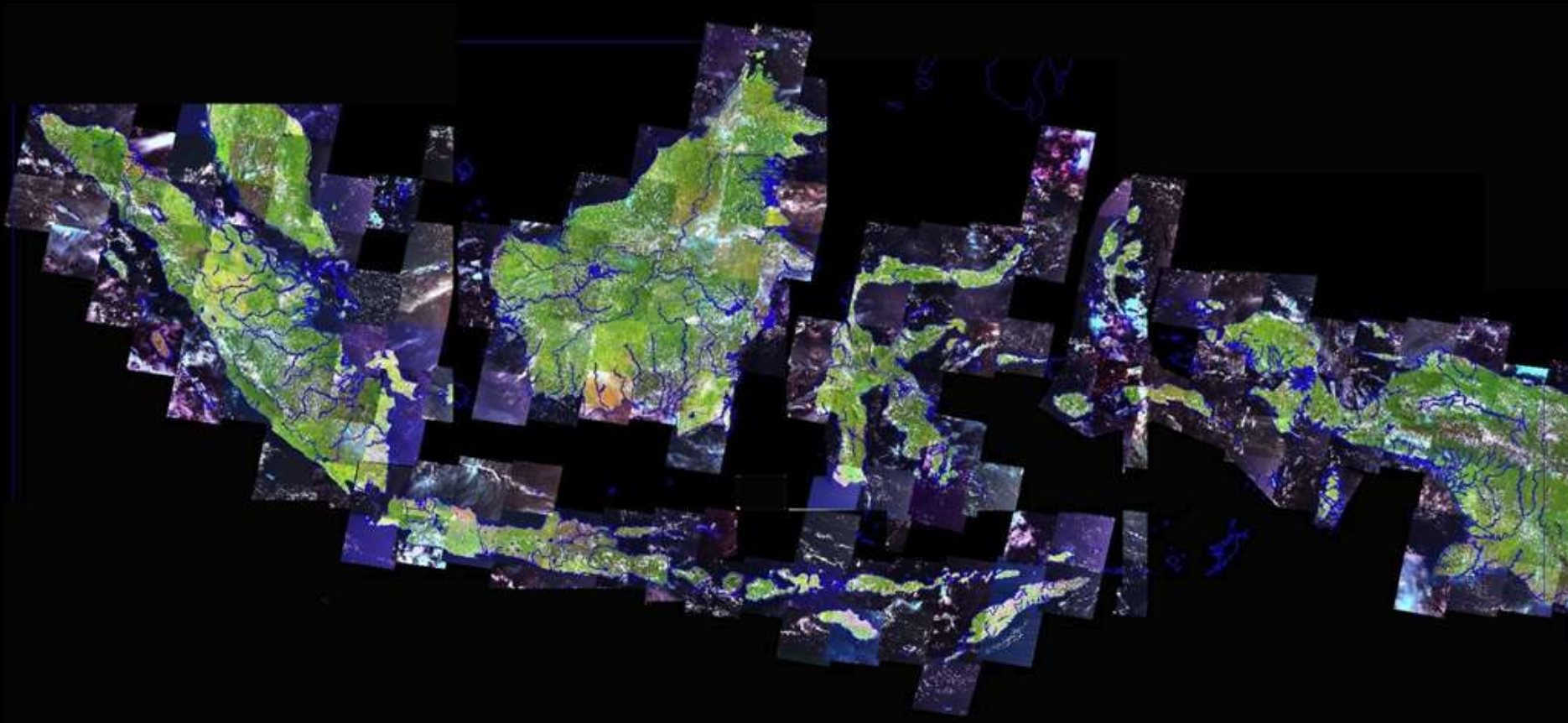
Renewable Energy
(Wood pellet, torrefied wood
Methanol, ethanol)

VALUE RELATED TO CLIMATE CHANGE/GREEN LIVING PLANET

INDONESIA FORESTS, SATELLITE IMAGES

MAIN: LANSAT 7 ETM+

OTHERS: MODIS, SPOT 4/5, PALSAR Worldview, Quickbird



Indonesia's Effort: How far ??

(landsat ETM7+)

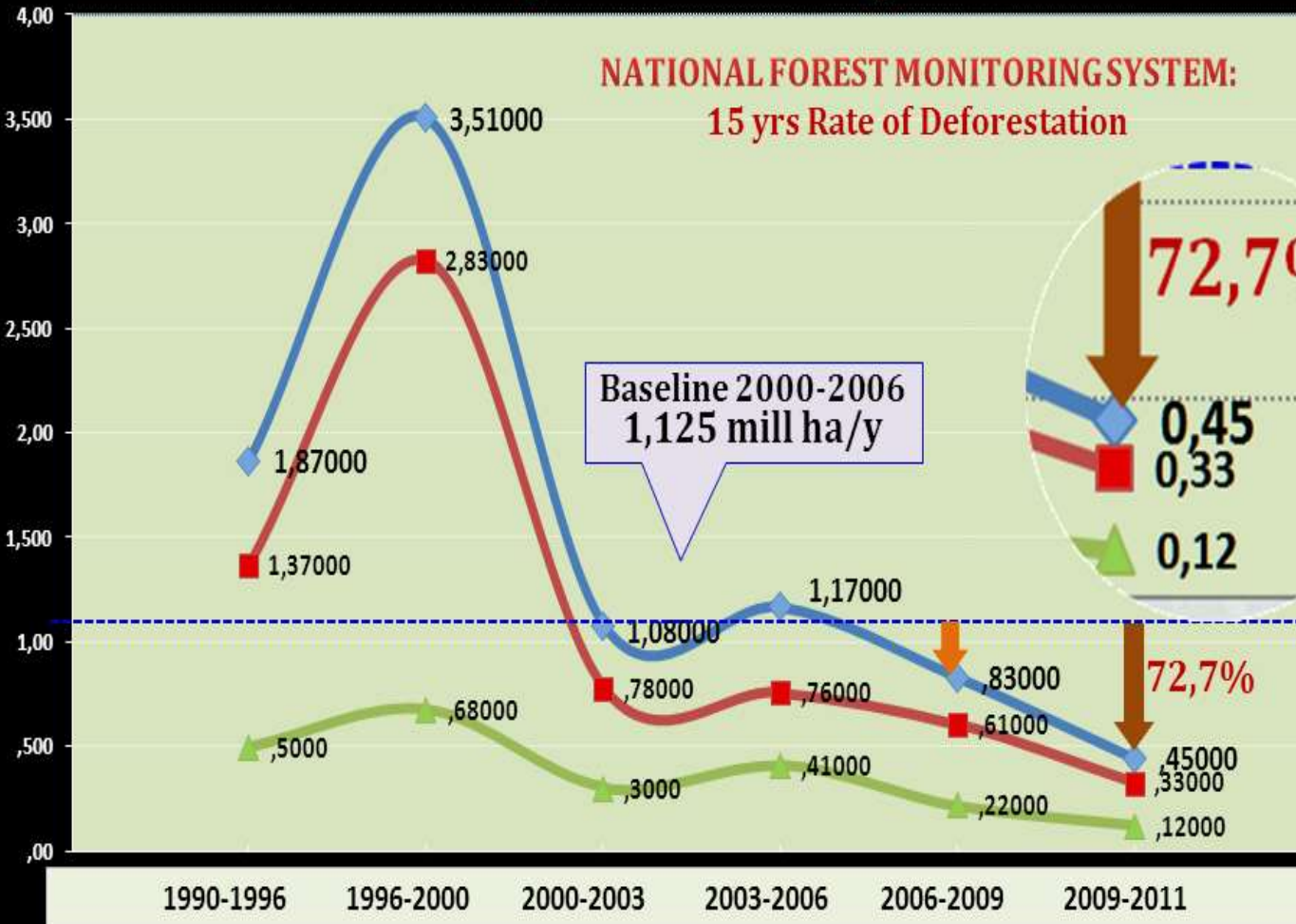
**NATIONAL FOREST MONITORING SYSTEM:
15 yrs Rate of Deforestation**

Baseline 2000-2006
1,125 mill ha/y

72,7%

0,45
0,33
0,12

72,7%



- For the future more productive program intervene CO₂;
- Least cost (but not a low hanging fruit) but scaling up best practices. AND GENDER
- Indonesia sign VPA WITH EU, Sept 30, 2013

REMOTE SENSING DATA *) HAS BEEN EXAMINED BY WORLD WIDE EXPERT

TRANSPARENCY IS KEY TO PROGRESS

Kuntoro Mangkusubroto

WHEN President Susilo Bambang Yudhoyono announced that the country's deforestation rate had dropped in 2011 to the lowest annual figure of 450,000 hectares of forest cleared, he was optimistic that Indonesia was well on its way to reducing significant amounts of carbon emissions from land-use change.

We are currently entering a period of more transparency in a more transparent way. This is fast and easy and when discussion represented a transparency once again proved to be a success.

Among the conclusions reached during the discussion was that the Ministry of Forestry's Monitoring and Oversight (UKP4) Task Force and the Ministry of Forestry gathered together more than 50 international forestry experts and observers in Jakarta last month to discuss and share their knowledge of a reliable deforestation calculation methodology. In the two-day discussion—attended by experts from various nations, including Brazil, the Netherlands, Japan and the United States—participants shared their experiences in approaches and methodologies for deforestation calculation. Across the board, appreciation was expressed for the Ministry of Forestry's willingness to share methodologies and spatial data related to deforestation on its website.

It was only recently that the Ministry of Forestry's Monitoring and Oversight (UKP4) Task Force and the Ministry of Forestry gathered together more than 50 international forestry experts and observers in Jakarta last month to discuss and share their knowledge of a reliable deforestation calculation methodology. In the two-day discussion—attended by experts from various nations, including Brazil, the Netherlands, Japan and the United States—participants shared their experiences in approaches and methodologies for deforestation calculation. Across the board, appreciation was expressed for the Ministry of Forestry's willingness to share methodologies and spatial data related to deforestation on its website.

The actual cost of deforestation in the billions of dollars—monetary improvement of our people's welfare means rapid action must be taken which is the only option left for us.

In Focus



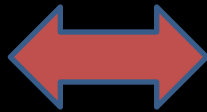
AsiaViews
regional insights global outreach

March 2013 | www.asiaviews.org

WHEN President Susilo Bambang Yudhoyono announced that the country's deforestation rate had dropped in 2011 to the lowest annual figure of 450,000 hectares of forest cleared, he was optimistic that Indonesia was well on its way to reducing significant amounts of carbon emissions from land-use change.

In a spirit of openness, the President's Delivery Unit for Development Monitoring and Oversight (UKP4)/REDD+ Task Force and the Ministry of Forestry gathered together more than 50 international forestry experts and observers in Jakarta last month to discuss and share their knowledge of a reliable deforestation calculation methodology. In the two-day discussion—attended by experts from various nations, including Brazil, the Netherlands, Japan and the United States—participants shared their experiences in approaches and methodologies for deforestation calculation. Across the board, appreciation was expressed for the Ministry of Forestry's willingness to share methodologies and spatial data related to deforestation on its website.

Brussels, 30 Sept 2013,
the Minister of
Environment of the
Republic of Lithuania
Valentinas Mazuronis, and
EU Environment
Commissioner Janez
Potočnik,
on behalf of the EU
member states signed the
**Voluntary Partnership
Agreement** between the
European Union and the
Republic of Indonesia on
forest law enforcement,
governance and trade in
timber products to the
European Union (FLEGT).



National: TLAS (Timber
Legality Assurance System)--
-SVLK

Gender Mainstreaming Forestry Indonesia

- Establish Working Group in the Ministry level (Decree No 222/2011) and subsequently Sub-Working Group of Gender Mainstreaming in every DG level within the Ministry of Forestry in order to plan, to execute, and to monitor and evaluate the respective responsive gender program
- Raising awareness of Gender Mainstreaming in forestry sector conducted at national and province level
- Capacity building program conducted for leaders and technical staff to enable staff incorporating gender into forestry program
- Minister Regulation number 65/2011 issued with refer to Regulation of the Ministry of Finance Number 93/2011 concerning guideline for responsive gender planning and budgeting

Gender Mainstreaming Forestry Indonesia

Working Group of Gender Mainstreaming in the Ministry plays an important role in incorporating respective program in each DG level:

- To develop policy and program and activities that response to gender perspective in forestry sector
- To monitor and evaluate the implementation of gender mainstreaming program in forestry sector development
- Improving communication and coordination between Ministry of Forestry and related Ministries, and with the Sub Working Group in each DG level with regard to gender mainstreaming program implementation

Challenges and gap: Institutional 'gender stereotip'

- Lack of awareness of gender issues within the forestry institutions
- Institutional biases that determine 'appropriate' roles for women, based on socio-cultural norms.
- As a results, failure to recognize and legitimate the role of women, knowledge and contributions to forest management practices

Doha COP 18, Forest Day by CIFOR: Forest landscape restoration: Enhancing more than carbon stocks

YouTube: <http://www.forestforlife.web.id/2012/12/forest-landscape-restoration-enhancing.html>

**GENDER
BALANCE ???**



FOREST BIOMASS AND FUTURE RENEWABLE ENERGY...

Gender new Challenges ??



Green fuel jet: WOOD and its wastes can be converted to aviation fuels, diesel, and methanol.

Green Fuel A Honeywell UOP technician holds a vial of the company's "green fuel"—a diesel equivalent that actually delivers more power and can be made from a variety of oils

http://www.scientificamerican.com/slideshow.cfm?id=flying-green-environmentally-friendly-skies-on-alternative-fuels&photo_id=F9E700EB-E7F2-38DF-3C212A43B4B11829



Source: Univ of Washington & MoF, Meeting in Jakarta 17 Nov 2011



4 month Caliandra Sp., Madura Island 23 Sept 2013

Gender and Climate Change

- The ultimate objective of the UNFCCC, Article 2, is to stabilize greenhouse gas concentrations "in the atmosphere at a level that would prevent dangerous anthropogenic interference with the climate system". It is increasingly evident that women are at the centre of the climate change challenge.
- **Women** are disproportionately affected by climate change impacts, such as droughts, floods and other extreme weather events, but they also have **a critical role in combatting climate change.**

The upcoming COP 19 in Warsaw

- For the item on "Gender and Climate Change", documents for consideration are The report on gender composition. Note by the secretariat (FCCC/CP/2013/4)
- A miscellaneous document on options and ways to advance the gender balance goal. Submissions from Parties and observer organizations (FCCC/CP/2013/MISC.2).

Linking gender and climate change

(Women can act as agents of change at different levels)



- Gender and adaptation
- Gender and financial support
- Gender and mitigation
- Gender and technology support
- Gender and capacity-building support

In Focus

Momentum for Change: Women for Results

→ showcases women-led activities that address climate change.

Upcoming events

The upcoming COP 19 session in Warsaw include:

.An in-session workshop on gender balance in the UNFCCC process, gender-sensitive climate policy and capacity-building activities to promote the greater participation of women in the UNFCCC process. This workshop was mandated by COP 18 (para 10 of decision 23/CP.18). It will take place during the first week of the session,

.Gender Day on Tuesday 18 November. During this day, a high-level event, side events and other activities dedicated to the topic of gender will take place in Warsaw.

Forests & Green Economy

(UNEP 2011, Towards a Green Economy)

- “REDD+ regime may be the best .. the transition to a green economy for (from) forestry”
- investing 0.03% of GDP b/w 2011-2050 to conserve forests & private investment for reforestation → >20% increase value added in forest industry compare to BAU



SCALING UP BEST PRACTICES
AND
GENDER MAINSTREAMING
FOREST & FUTURE GREEN PLANET



Inspired by Michael Jackson Song “HEAL THE WORLD”

POEM OF “TREES FOR BETTER LIFE”

- Heal the world by planting trees
- Planting more means absorbing more CO₂
- Planting more means produce more green products
- These are the anchor of forest for climate change solution.. HEAL THE WORLD BY PLANTING TREES..

Thank you yetti.rusli@gmail.com

