

# Agriculture Coordination Working Group Journal



The Emergency Rehabilitation and Coordination Unit (ERCU) of the FAO in Zimbabwe

September 2011

Number 64

Articles drawn from presentations compiled by the following organizations

- 2011/12 Rainfall Season Forecast
- Government Agriculture Support Programme for 2011/12 season
- Donor Funded Agriculture Support Programme for 2011/2012 season
- Agriculture Food Security Monitoring System (AFSMS)
- ZIMVAC—Rural livelihoods Assessment Report 2011



To download full presentations, and to access other information on agriculture, visit the website [www.acwg.co.zw](http://www.acwg.co.zw)

## Next ACWG meeting

**Date:** Oct 27<sup>th</sup>, 2011  
**Time:** 9.00am  
**Venue:** Celebration Centre  
162 Swan Drive  
Borrowdale, Harare.

FAO coordination activities, including the publication of the FAO Journal, are funded by the following Donor Organizations



## NEWS

### World Food Day

World Food Day is commemorated annually on the 16th of October to recognize efforts made in the fight against hunger.

The 2011 theme is “**Food Prices - From Crisis to Stability**”. National commemorations will be held on 21st October, in Mashonaland Central Province, Rushinga district at Chimhanda Irrigation Scheme. (about 20 km from Rushinga).

All interested are invited to attend and support this 31<sup>st</sup> World Food Day. The occasion also marks the 66<sup>th</sup> anniversary of the founding of the Food and Agriculture Organisation of the United Nations. (FAO). The occasion is also celebrated under the umbrella of the United Nations week in which all UN agencies celebrate the United Nations Day. For more information contact David Mfote on [david.mfote@fao.org](mailto:david.mfote@fao.org) or +263 4 253655-8

### Cash Learning Partnership Training Programme

- Cash Transfer Programming in Humanitarian Assistance (advanced level 2 course)
- Date: 31<sup>st</sup> October to 4<sup>th</sup> November 2011
- Venue: Save the Children, Fife Avenue, Harare.
- Registration is in progress, deadline is 23<sup>rd</sup> October 2011, only 25 places available so apply early!
- Contact: Dr. Deborah Gourlay, [calp@savethechildrenzw.org](mailto:calp@savethechildrenzw.org) or Tel : +263 (0) 4 793 198/9, 251724, +263 (0) 712 806 506

### Seed & Fertiliser Update 2011/12 Season

- **Fertiliser current stock:** Compound D: 80-90,000 MT Top dressing 70,000 MT (ZFC, Windmill, OMNIA)
- **Prices:** Compound D: USD 540—600 per MT and Topdressing : around USD 600 per MT
- According to the Zimbabwe seed traders Association there is about 83,000 MT of maize seed in the country, national requirements range between 35,000-40,000MT. Table below shows national seed supply situation for the 2011/12 season.

## Z S T A

### National Inputs Supply Situation in Preparation for the 2011/12 Summer Season

Name of Seed House/Company	Maize (mt)			Sorghum (mt)	Soybeans (mt)	Groundnuts (mt)	Cowpeas (mt)	Millets (mt)	Cotton (mt)
	Hybrid	OPV	Total						
Seed Co.	42,215	1,218	43,433	440	4,000				
Pannar	13,000		13,000						
Pioneer	12,467		12,467						
Agriseeds	4,520	2,380	6,900	680		420	340	10	
Prime Seeds		700	700	500		100	100	75	
ARDA Seeds	1,700	300	2,000	150	50		160		
Progene	1,600	3,000	4,600	100			300		
NTS		1,200	1,200	16			10		
GMB	215.4		215.4						
Quon									15,000
<b>TOTAL</b>	<b>75,617.4</b>	<b>8,798</b>	<b>84,515.4</b>	<b>1,886</b>	<b>4,050</b>	<b>520</b>	<b>910</b>	<b>85</b>	<b>15,000</b>

### Zimbabwe CAP 2012

Preparations for the CAP 2012 are currently going on. The objectives for the Zimbabwe CAP 2012 are:

- Support the restoration of sustainable livelihoods for vulnerable groups through integration of humanitarian response into recovery and development action
- Save and prevent loss of life through near-to medium-term recovery interventions to vulnerable groups, incorporating disaster risk reduction framework.
- Support the population affected by emergencies through the delivery of quality essential basic services

The humanitarian community in Zimbabwe will strive to institutionalise strategic inter-linkages among humanitarian and development actors, e.g strengthen linkages and complementarities between humanitarian interventions programmed under the CAP and recovery/transition initiatives, such as UN Agencies’ programs as framed by the 2012-15 ZUNDAF and other relevant NGO and Government activities

### Agriculture Programmes for the CAP 2012

In line with national recommendations, consensus on the following: scale down scope of support to reflect strictly humanitarian needs.

### Central Emergency Response Fund (CERF)

- The Central emergency Response Fund (CERF) availed USD 6 million through its underfunded window.
- The Agriculture cluster received **USD 361,000**, which will be disbursed through FAO, under a project titled: “*Improved dietary diversity for drought affected households through live-stock production and gardening*”
- Targeted areas: Matebeleland South Province: Umzingwane, Matobo, Bulilima districts.
- The project will be implemented by NGOs identified through normal FAO tendering procedures.

### Seminar Announcement: Highlights of CIMMYT research findings and progress in maize breeding and agronomy

- **SPEAKER:** Dr John Mac Robert
- **DATE:** Tuesday 11 October, 2011
- **TIME:** 1 – 2 pm
- **VENUE:** Crop Science Department, UZ, Lecture, Theatre 4

*Please stay for tea afterwards in the Department Committee Room*

### September 2011 Price Watch

<b>Bucket of maize grain (17.5Kg):</b>	USD 4.00	(Unchanged since Sept 2011)
<b>Super White maize meal (10Kg):</b>	USD 6.65	(Unchanged since Sept 2011)
<b>Roller Meal (10Kg):</b>	USD 4.20	(was USD 4.40 in Sept 2011)
<b>Big Bundle of leafy vegetables:</b>	USD 2.00	(was USD4.00 in June 2011) <b>Small:</b> R1 (Unchanged since Sept 2011)



## Rainfall Season Forecast 2011/12 Season -Meteorological Services Department

By Jephias Mugumbate -tel: 0733694361—[jepbatsi@tsamail.co.za](mailto:jepbatsi@tsamail.co.za)

- Zimbabwe is divided into three homogeneous rainfall regions which differ slightly for the first half October, November, December (OND) and the second half January, February March (JFM).
- Indicators of the seasonal trends have the same effect on all areas found within the same region. Variability within a region can occur due to local effects such as terrain.
- Statistical methods, numerical weather predictions and expert judgment are used to determine the forecast. Forecasts cover relatively large areas and are expressed in probability terms of rainfall amounts being normal (N), below normal (B) and above normal (A). High value of percentage shows the favored category.

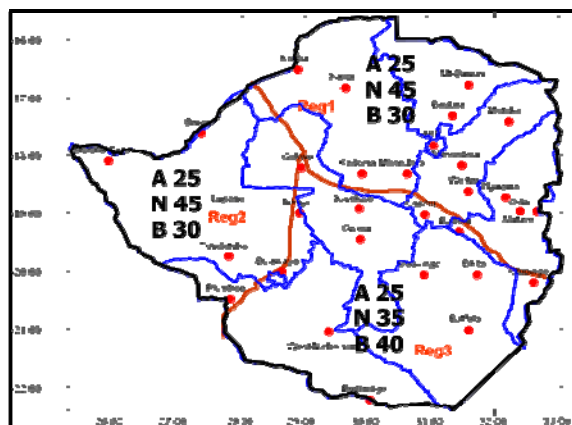
### Oct- Dec 2011 Forecast (see Map 1 on the right)

**Regions 1 and 2** normal rains are expected with a bias towards below normal whilst in **Regions 3** below normal to normal rains are expected. Preliminary analysis carried out by the Meteorological Services Departments comparing two periods from 1940-1971 and 2000-2010 across the whole country indicates a delay of 8-10 days in the onset of rains

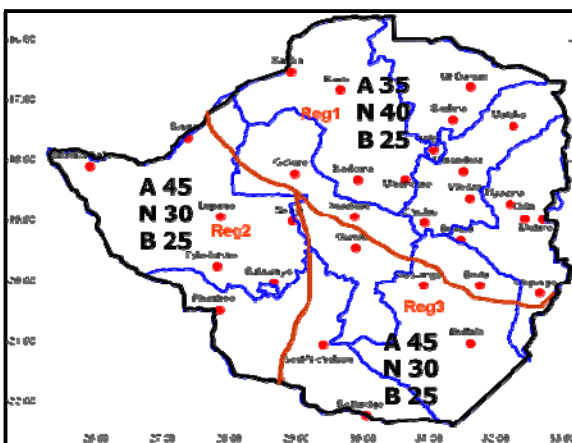
### January to March Forecast (see Map2 on the right)

In **Region 1**- Normal rains with a bias towards above normal are expected. **Region2 and 3** –Above normal rains with a bias towards normal are expected. A normal season does not translate to good harvests. Further updates will be available in daily weather bulletins, weekly rainfall forecast and ten-day meteorological bulletin

Map 1



Map 2



## Government Agriculture Support Programme for 2011/12 season

By Ministry of Agriculture Mechanisation and Irrigation Development- Collen Kabudura tel: 797390

- The government has availed a USD45 million facility for the 2011/12 summer season.
- Farmers will access inputs at subsidized prices through vouchers redeemable at GMB depots. Support will be given to A2 farmers for a maximum of 10Ha, A1, OR and SSCA to a maximum of 1Ha and CA to a maximum of 0.5Ha.
- Approximately 3 000MT of maize seed, 60MT of sorghum seed, 75 000MT of lime, 25 000MT of basal fertilizer and 25 000MT of top dressing fertilizer will be purchased. Fertiliser

will be adequate to cover 83 400Ha whilst the maize seed and sorghum seed are adequate to cover 120 000Ha and 600Ha respectively.

### Progress

- Tenders were floated and winning companies have been notified on the quantities to be supplied at the various designated points across the country. Contracts have been finalised and are awaiting approval from the Ministry of finance.

The table below illustrates the package size each beneficiary will receive

Sector	Seed	Lime	Basal Fertiliser	Top Dressing fertiliser
A2	250 kg Maize	120 bags	60 bags	60 bags
A1, OR, SSCA	25kg Maize or 10kg Sorghum	12 bags	6 bags	6 bags
Communal	12.5kg Maize or 5 kg Sorghum	5 bags	3 bags	3 bags

## Donor Funded Agriculture Support Programme for 2011/2012 season -FAO

By Kudzayi Kariri -tel: (04)252015—[kudzayi.kariri@fao.org](mailto:kudzayi.kariri@fao.org)

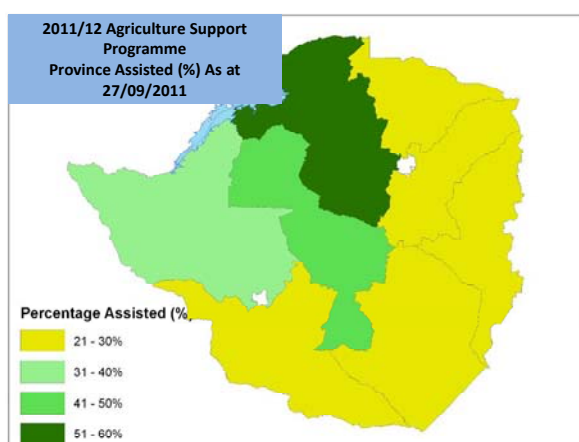
The donor funded agriculture support programme for the 2011-12 season, unlike in previous years has been characterized by a shift to market based interventions and extension support as the country moves from a humanitarian phase transitioning into recovery.

As of the 27<sup>th</sup> of September, about 400,000 HHs had been reported to receive agriculture assistance from the humanitarian community. The majority of the assistance is in the form of training, provision of extension and market linkage support. It is important to highlight that data is still being collected from NGOs, therefore the information presented below must not be treated as finalized data, the situation is expected to change as more data is received from NGOs.

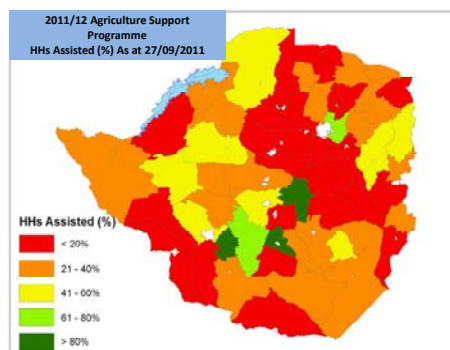
The assistance broken down to provincial level indicates Midlands as having the highest number of assisted households while Matabeleland South has the least as indicated in the table below.

Province	Number of HHs Assisted
Manicaland	63,199
Mash Central	33,848
Mash East	39,528
Mash West	51,409
Masvingo	59,053
Matabeleland North	32,340
Matabeleland South	30,026
Midlands	84,913
Harare	1,120
<b>TOTAL</b>	<b>395,450</b>

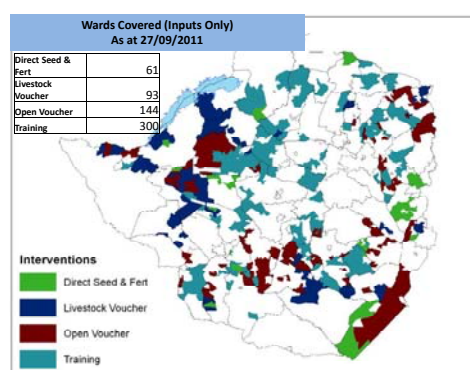
An analysis of the assisted HHs at provincial level against the estimated number of HHs in the respective provinces indicates that the southern and eastern provinces have the least percentages compared to the other provinces.



An analysis of the districts indicates that only three districts are yet to receive agriculture assistance. The majority of the assisted districts have less than 40% of the total HHs assisted

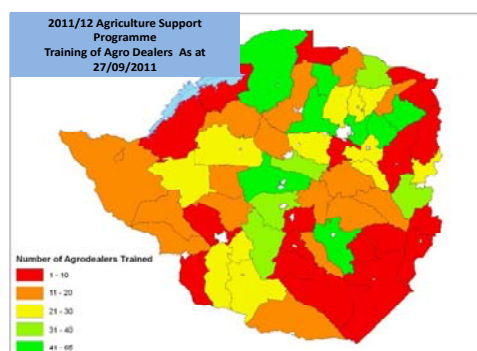


An analysis of wards receiving direct distribution, vouchers and training indicates that the majority of the wards will receive training support followed by open vouchers as indicated below,



A number of agro dealers have received training as part of market based agriculture assistance this season from both Government and humanitarian players. An analysis of the training indicates that the majority of agro dealers were trained in the Mashonaland and Midlands provinces as indicated in the map below.

FAO is maintaining a database on trained agro dealers and will be shared with all stakeholders.



In an effort to ensure that information is disseminated to the lowest level, two Teams comprising AGRITEX, MSD, MoAMID and FAO carried out Provincial Information Dissemination from the 3<sup>rd</sup> to the 6<sup>th</sup> of October.

FAO will continue to follow up on outstanding/missing data and will keep stakeholders informed through monthly updates.

## Monitoring Plan For the Smallholder Farmer Agriculture Support Programme: 2011/12

By Ministry of Agriculture Mechanisation and Irrigation Development- W. Shereni tel: 797390

The government, in collaboration with development partners, has provided guidelines for the Smallholder Farmer Agriculture inputs, Extension And Market support programme. The programme is funded by the donor community and implemented by several NGOs.

A Monitoring and Evaluation Committee has been constituted to oversee the monitoring and evaluation of the programme.

The committee is chaired by the Ministry of Agriculture, Mechanization and Irrigation Development, FAO serves as the secretariat, other members include Departments of Economics and Markets, AGRITEX and Livestock and Veterinary Services WFP, SNV and GRM. Other institutions will be incorporated to undertake specific tasks.

### Progress Monitoring

- Review of secondary information and key informant interviews
- Field Missions in collaboration with implementing partners (Once a month during September – December 2011) As and when during January – April 2012
- Incident Reporting Protocol in collaboration with field officers (AGRITEX & NGOs) organize field days

### Impact Assessment

The committee will oversee the development of data collection tools. The following assessments will be carried out:

- **Baseline** - November—December 2012: outlining the status quo in terms of household characteristics and resource endowments, trends in crop and livestock production performance
- **Assessment on access and utilisation of inputs** - January/February 2012: Focusing on Timeliness, Quantity and Quality, input sources etc. Surveys include, First Round Crop and Livestock assessment and NGO Post planting surveys
- **Assessment on crop yields and production performance** - May/June 2012: surveys include, Second Round Crop and Livestock assessment and NGO post harvest surveys
- **Overlapping** - To reduce overlapping all implementing partners (NGOs) should share with the local AGRITEX office their beneficiaries lists. All NGOs should verify their beneficiaries with local AGRITEX database before distribution of inputs

## Agriculture Food Security Monitoring System (AFSM) - National Early Warning Unit

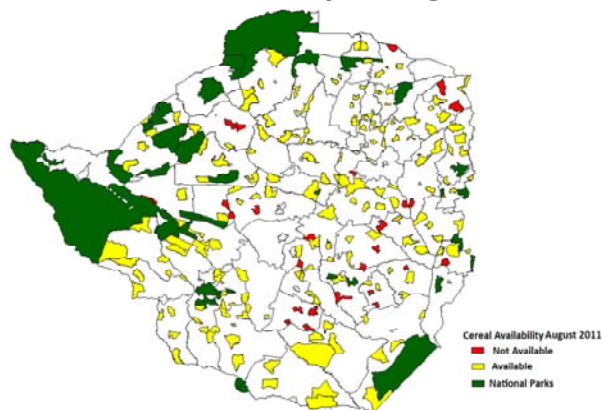
By Tamburiro Pasipangodya tel: 0774394272 - [tambupasi@yahoo.com](mailto:tambupasi@yahoo.com)

As of the first week of August 2011, the Agriculture and Food Security Monitoring System (AFSMS) reported the food security situation in the country to be generally stable. More than 80% of the 158 monitored sites reported cereal availability.

### Food Security Situation

A comparison with August 2010 shows a 6% decline in the sites reporting cereal availability compared to August 2011. At provincial level, All the monitored sites in Matabeleland South and Mashonaland West provinces reported cereal availability whilst Midlands and Masvingo provinces have lowest percentage of sites reporting cereal availability at 68% and 71 % respectively.

### Cereal Availability – August 2011



The main source of grain being consumed remains own production with the exception of those households in Masvingo and Matabeleland South provinces that have purchases at 49% and 66% respectively. As is the trend from June until the next harvest, the percentage of households depending on grain from own production declines whilst those relying on purchases and casual labour increases. This is due to households exhausting stocks from their harvests and having to turn to alternative sources.

### Maize Grain Prices

The national average price for maize grain has remained stable for the period June to August at \$0.30/kg. This provides a positive indication of the grain availability within the monitored sites.

### Livestock and Grazing Condition

Grazing was reported to be in average condition in 56% of the sites, whilst in 35% of the sites it had deteriorated to a poor condition. As is expected during this time of the year, the grazing condition continues to deteriorate until the onset of the rains. This therefore affects the quality of grazing available particularly for cattle resulting in their condition being reported to be fair compared to the browsers (goats and donkeys) whose condition is still reported to be good.

Water for livestock consumption is available in 94% of the sites Dipping of cattle is occurring on a fortnightly basis in 59% of the monitored sites.

## Rural Livelihoods Assessment Report (2011) - Zimbabwe Vulnerability Assessment Committee

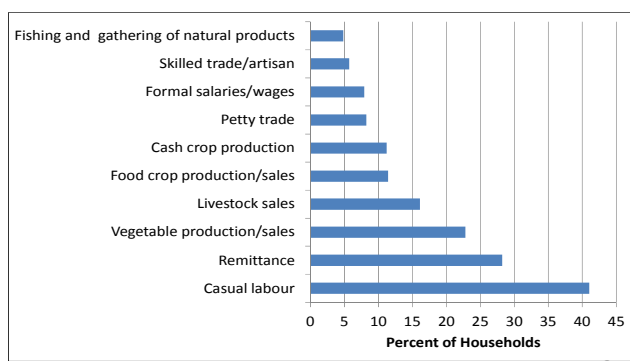
By Yvonne Mavhunga - tel: (04)860320 - [yvonnemavhunga@gmail.com](mailto:yvonnemavhunga@gmail.com)

The Zimbabwe Vulnerability Assessment Committee (ZimVAC) is a consortium of Government, UN agencies, NGOs and other International Organisations led and is regulated by the Government. ZimVAC livelihoods assessments have been conducted annually since 2002 to understand the national food security situation and livelihoods. The 2011 assessment was carried out in May 2011.

### Household Income and Expenditure Patterns

Casual labour, food crop production, vegetable production, remittances and livestock production were the most common income sources cited by households as their main source of income. The highest average monthly income was reported to be coming

#### Main Income Sources as considered by households



from cash crop production, followed by formal employment. Livestock sales averaged out at a low level of about USD44 per household, suggesting households were mainly disposing off small stocks. While casual labour and remittances were reported to be sources of income by the highest proportion of sampled households, their average monthly contribution came in at between USD18 and USD28 per household.

### Livestock Production

45% of the surveyed rural households owned at least one beast, with Midlands(53%) having the highest and Manicaland (37%) having the lowest proportion of households owning cattle. About 43% of the sampled households owned goats. Matabeleland South(61%) had highest proportion of households that owned goats and lowest goat ownership was in Mashonaland Central (30%) and West(30%) provinces.

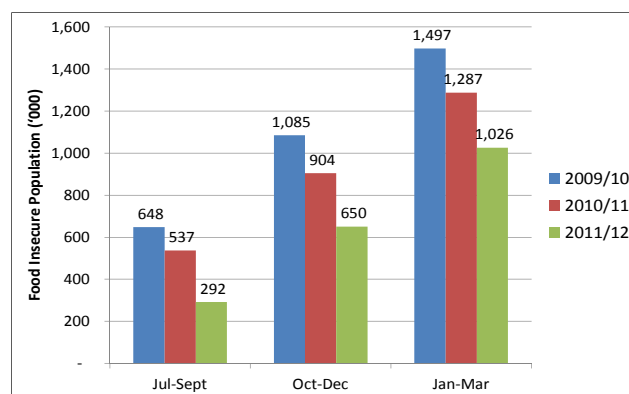
### Crop Production

Nationally at least 80% of the households had planted maize, which was comparable to the 2009/10 agricultural season, sorghum was planted by 20% of the households nationally with the highest proportion being in Matabeleland South (40%) followed by Masvingo (31%) and Matabeleland North(30%). 6% of households reported having access to community irrigation schemes and approximately 32% of these households reported their irrigation schemes were not functioning

### Food Security

The prevalence of food insecure households is lower than that of last year, 11.9% of rural households will be food insecure during the peak hunger period( January-February 2012).This equates to

#### Number of food insecure people over time



1,026,004 people. This is about 261,000 people lower than 2010/11 peak hunger period

### Conclusions and Recommendations

**Analysis of household main income sources show significant dependence on agriculture and limited income sources diversity.** This scenario is indicative of high rural household vulnerability to shocks and hazards associated with agriculture. Efforts to improve and stabilise rural households incomes should therefore not only focus on improving agricultural productivity but also encourage diversification and strengthening of non-agricultural sources.

**Livestock diseases are accounting for a high percentage of losses across all major livestock types.** Efforts to address this production constraint should be strengthened to minimise livestock losses and bolster productivity

**Results show that less than 16% of the survey households grow high value cash crops.** Encouraging more households to grow a more diversified portfolio of cash crop can significantly improve rural household incomes; 6% of households reported to having access to community irrigation schemes

**Approximately 32% of these households reported their irrigation schemes were not functioning.** There is therefore an urgent need to equip farmers with technologies and approaches that help mitigate the adverse effects of unreliable rainfall patterns

In conformity with aspirations articulated in previous assessments, surveyed rural communities stated the following as their priority development areas; improved transport and communication infrastructure, irrigation infrastructure and dams rehabilitations and development, improved water and sanitation and employment and income generating projects.

Programmes and policies to improve rural livelihoods should be informed by and build on these community priorities.