



# Haiti - Percent of Poor Households Annual Food Needs Covered by Own Crop Sales (February 2010)



## Roads

- Primary
- Secondary

- Area of extreme energy released during the earthquake event (from USGS)
- Area of medium-to-high energy released during the earthquake event (from USGS)

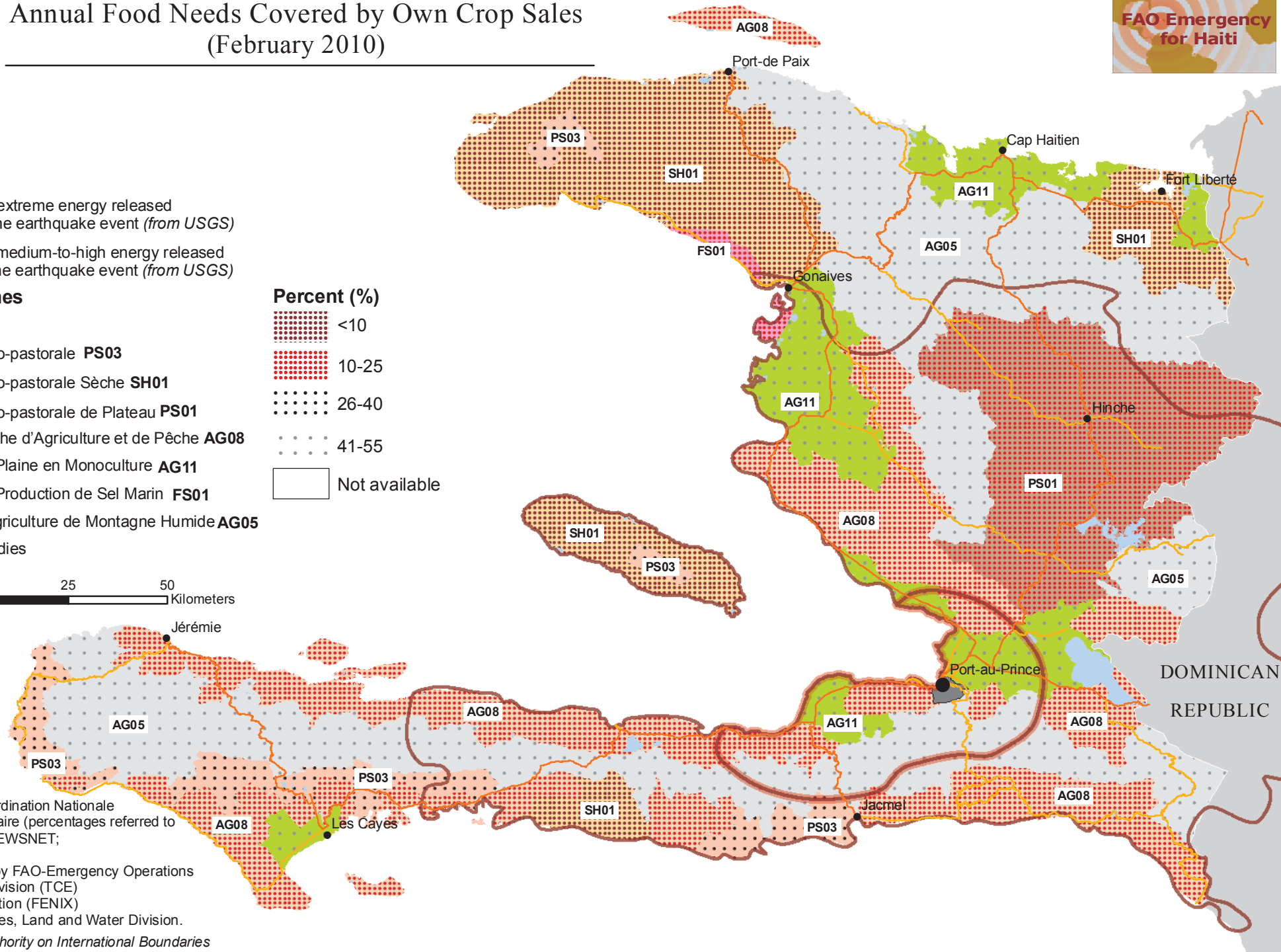
## Livelihood Zones

- Urban
- Zone Agro-pastorale **PS03**
- Zone Agro-pastorale Sèche **SH01**
- Zone Agro-pastorale de Plateau **PS01**
- Zone Sèche d'Agriculture et de Pêche **AG08**
- Zone de Plaine en Monoculture **AG11**
- Zone de Production de Sel Marin **FS01**
- Zone d'agriculture de Montagne Humide **AG05**
- Water Bodies

## Percent (%)

- <10
- 10-25
- 26-40
- 41-55
- Not available

25 0 25 50 Kilometers



Sources: CNSA - Coordination Nationale de la Sécurité Alimentaire (percentages referred to year 2003); USGS / FEWSNET; OpenStreetMap.  
 Authors: Supported by FAO-Emergency Operations and Rehabilitation Division (TCE) FAO-GIEWS Workstation (FENIX) FAO-Natural Resources, Land and Water Division.

*This map is not an authority on International Boundaries*