



# **Foot-and-Mouth Disease situation**

## **Food and Agriculture Organization of the United Nations**

### **Monthly Report**

### **February 2013**

#### **INFORMATION SOURCES USED:**

##### Databases:

- \*OIE WAHID World Animal Health Information Database\*
- \*FAO World Reference Laboratory for FMD (WRLFMD)\*

##### Other sources:

- \*FAO/EuFMD supported FMD networks\*
- \*FAO/EuFMD projects and field officers\*

#### **ACKNOWLEDGEMENT:**

**Indian Council of Agricultural Research**

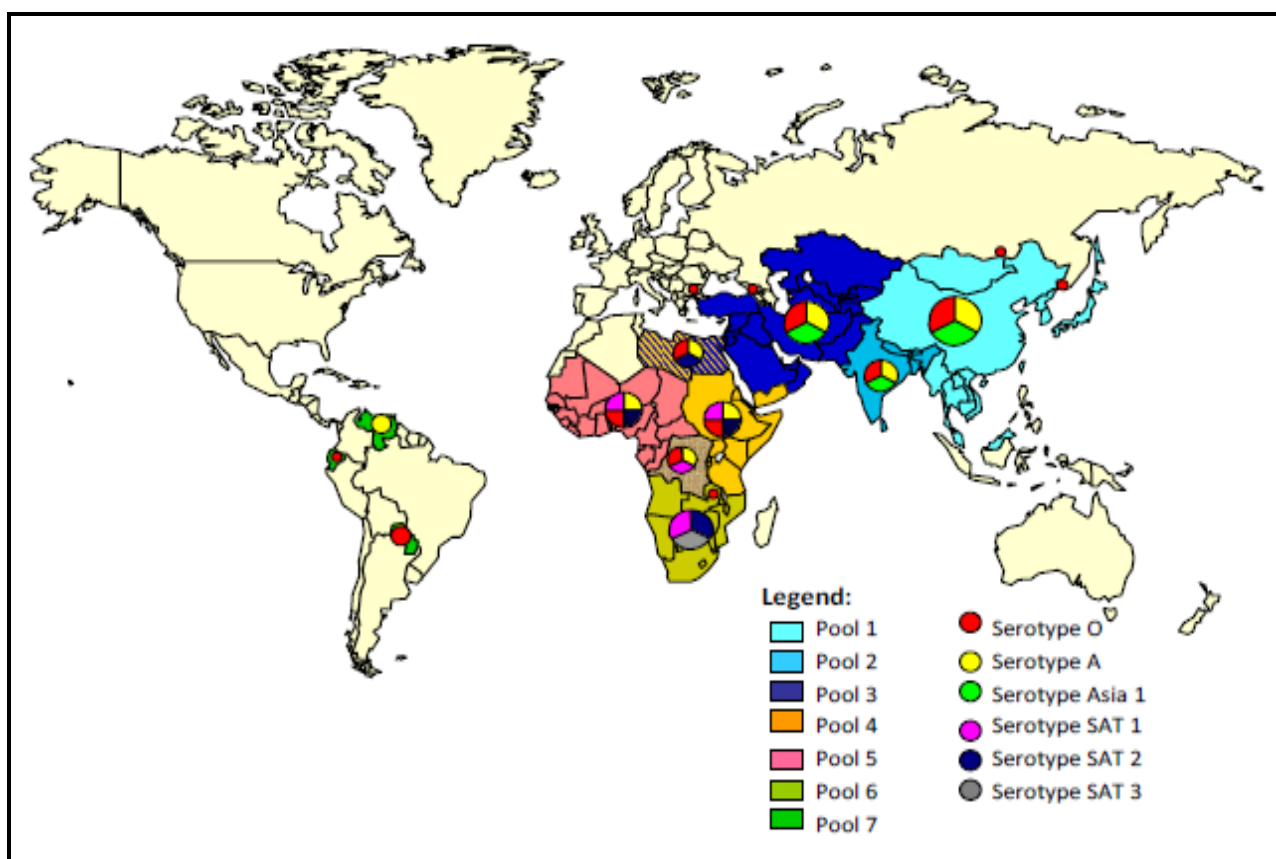
The sources for information are referenced by using superscripts.  
The key to the superscripts is on the last page

*Please, note that the use of information and boundaries of territories should not be considered to be the view of the U.N. Please, always refer to the OIE for official information on reported outbreaks and country status.*

## I. GENERAL OVERVIEW

### *Foot-and-mouth disease (FMD) distribution by Serotype and the seven virus pools, 2010-2013 (Map 1)*

*Pools represent independently circulating and evolving FMDV genotypes; within the pools, cycles of emergence and spread occur that usually affect multiple countries in the region. In the absence of specific reports, it should be assumed that the serotypes indicated below are continuously circulating in parts of the pool area and would be detected if sufficient surveillance was in place (Table 1).*



Map 1: Foot-and-mouth disease virus pools distribution, 2010-2013

Table 1: List of countries representing each virus pool

POOL	REGION/COUNTRIES	SEROTYPES
1	<b><u>CENTRAL/EAST ASIA</u></b> (Cambodia, China (People's Rep. of), China (Hong Kong, SAR), China (Taiwan Province), Japan, Korea (DPR), Korea (Rep. of), Laos PDR, Malaysia, Mongolia, Myanmar, Russian Federation, Thailand, Viet Nam)	O, A, Asia 1
2	<b><u>SOUTH ASIA</u></b> Bangladesh, Bhutan, India, Nepal, Sri Lanka	O, A, Asia 1
3	<b><u>WEST EURASIA &amp; MIDDLE EAST</u></b> (Afghanistan, Armenia, Azerbaijan, Bahrain, Bulgaria, Egypt, Georgia, Iran, Iraq, Israel, Jordan, Kazakhstan, Kuwait, Kyrgyzstan, Lebanon, Libya, Oman, Pakistan, Palestine Autonomous Territories, Qatar, Saudi Arabia, Syrian Arab Republic, Tajikistan, Turkey, Turkmenistan, Uzbekistan)	O, A, Asia 1
4	<b><u>EASTERN AFRICA</u></b> (Burundi, Comoros, Congo D. R., Djibouti, Egypt, Eritrea, Ethiopia, Kenya, Libya, Rwanda, Somalia, North Sudan, South Sudan, Tanzania, Uganda, Yemen)	O, A, SAT 1, SAT 2
5	<b><u>WEST/CENTRAL AFRICA</u></b> (Benin, Burkina Faso, Cameroon, Cape Verde, Central Afr. Rep., Chad, Congo D. R., Congo R., Cote d'Ivoire, Equatorial Guinea, Gabon, Gambia, Ghana, Guinea Biss., Guinea, Liberia, Mali, Mauritania, Niger, Nigeria, Sao Tome Principe, Senegal, Sierra Leone, Togo)	O, A, SAT 1, SAT 2
6	<b><u>SOUTHERN AFRICA</u></b> (Angola, Botswana, Congo D. R., Malawi, Mozambique, Namibia, South Africa, Zambia, Zimbabwe)	{O, A}* , SAT 1, SAT 2, SAT 3
7	<b><u>SOUTH AMERICA</u></b> (Ecuador, Paraguay, Venezuela)	O, A

\* ONLY IN NORTH ZAMBIA AS OVERSPILL FROM POOL 4

Egypt and Libya are indicated as being in multiple pools, since they have evidence of FMDV originating from 2 or more pools in the recent past (4 years).

## II. HEADLINE NEWS

### **POOL 1**

**China**<sup>1</sup> – FMD outbreak in cattle, in Deji Village, Qushui, Lasha, TIBET.

**Viet Nam**<sup>9</sup> – 3 FMD outbreaks in January 2013, 2 FMD outbreaks in February 2013 were reported.

**Malaysia**<sup>9</sup> – 1 FMD outbreak was reported in January 2013.

### **POOL 2**

**Nepal**<sup>2</sup> – FMD serotype O outbreaks in Kathmandu districts were reported in all susceptible species.

**India**<sup>15</sup> – 25 outbreaks of FMD were reported in February 2013, caused by FMD virus serotypes O (23), and Asia 1 (2)

### **POOL 3**

**Iran**<sup>2</sup> - During February 2013, 67 FMD outbreaks were reported.

**Turkey**<sup>2</sup> – In Anatolia region, serotypes O, A and Asia 1 are still circulating.

### **POOL 4**

**Tanzania**<sup>2</sup> - FMD outbreak confirmed in Ngara District.

### **POOL 5**

**Democratic Republic of the Congo**<sup>14</sup> – FMD has been continuously reported in Ruzizi plain (South-Kivu).

### **POOL 6**

**South Africa**<sup>17</sup> – the proposed FMD-free zone in South Africa does not fulfill the relevant international requirements as defined in the Terrestrial Animal Health Code of the OIE.

### **POOL 7**

No new events have been reported for this reporting period.

## **COUNTER**

**\*\*\* 14 MONTHS SINCE LAST OUTBREAK IN SOUTH AMERICA HAS BEEN REPORTED**

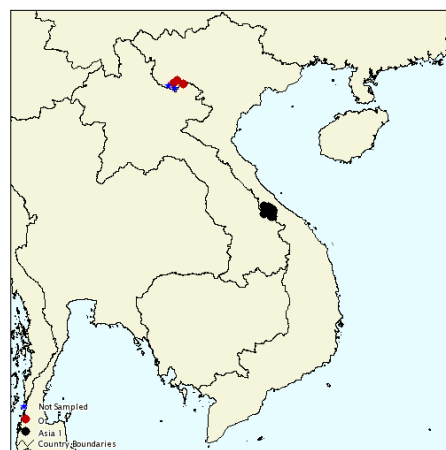
**\*\*\* 101 MONTHS SINCE LAST C SEROTYPE OUTBREAK HAS BEEN REPORTED**

### III. DETAIL POOL ANALYSIS

#### P O O L 1 CENTRAL / EAST ASIA

**China<sup>1</sup>** – Reported FMD outbreak is continuation of the event which started in February 2012 with morbidity rate 35.14%. In response to outbreak, vaccination of susceptible species in several divisions were conducted. FMDV was confirmed by ELISA, RT-PCR and virus isolation at Lanzhou Veterinary Research Institute (National laboratory) (OIE's Reference Laboratory).

**Viet Nam<sup>9</sup>** – 3 FMD outbreaks in January 2013 were caused by serotype O. Samples from outbreaks in February 2013 were not taken and the disease was not confirmed by laboratory tests (Map 2).



Map 2: FMD outbreaks in Viet Nam

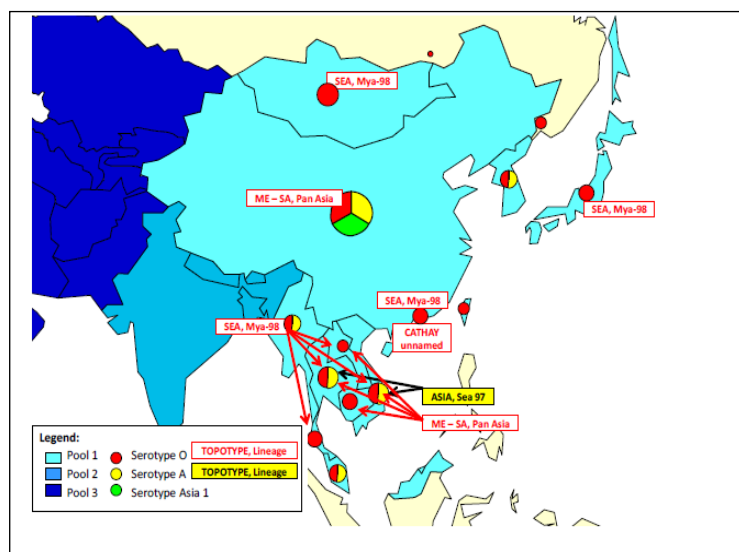
**Malaysia<sup>9</sup>** – 1 FMD outbreak was reported in January 2013 (Map 3). The serotype of involved FMDV was not determined.



Map3: FMD outbreaks in Malaysia

February, 2013

FMD in most central and eastern Asia countries is endemic (Map 4). Brunei and Japan are the only countries in this region with the free FMD status where vaccination is not practiced.



Map 4: FMD distribution by serotypes 2010 – 2013

There is a zone covering the provinces of Sabah and Sarawak in Malaysia which is designated as FMD free without vaccination. In China, the main threat comes from O/Mya-98 strain and PanAsia strain. The O/Mya-98 strain mainly affects pigs, although cattle and goat/sheep can also show clinical signs in some field cases. However, the type O PanAsia strain mainly affects cattle.

Epidemiological analysis indicates that animal movements associated with trade are the main factors for the spread of the FMD and for transmission between provinces in China. Both Mya-98 and PanAsia strains of FMDV sequences from PR China had a close relationship with those sequences from outbreaks in Southeast Asian nations<sup>6</sup>. FMD history in past 2 years is given in Table 2.

February, 2013

Table 2: Pool 1 FMD history 2010-2013

COUNTRY/6 MONTHS REPORTING TO OIE	FMD HISTORY (past 2 years)	LAST OUTBREAK REPORTED/TYPE	OIE FMD STATUS
<b>CAMBODIA, 2011</b>	2011, 2012 – NOT TYPED <sup>1</sup>	OCT 2012/NOT TYPED <sup>1</sup>	DISEASE PRESENT
<b>CHINA (PEOPLE'S REP. OF), 2011, ½ 2012</b>	2011, 2012, 2013 – O <sup>1, 16</sup>	FEB 2013/O <sup>1</sup>	DISEASE PRESENT
<b>CHINA (HONG KONG, SAR), 2011</b>	2011 – O <sup>1, 5</sup> 2012 – O <sup>3</sup>	NOV 2012/O <sup>3</sup>	DISEASE PRESENT
<b>CHINA (TAIWAN PROVINCE), NO OIE DATA</b>	2011 – 2011 – O <sup>5</sup> 2012 – O <sup>1</sup>	NOV 2012/O <sup>1</sup>	UNKNOWN
<b>JAPAN, 2011</b>	2011, 2012 - NO REPORTED OUTBREAKS <sup>1</sup>	JULY 2010/O <sup>1, 5</sup>	FREE WITHOUT VACCINATION
<b>KOREA (DPR), 2011</b>	2011 – O <sup>1, 5</sup>	MARCH 2011/O <sup>1</sup>	½ 2011-PRESENT 2/2011 – NOT REPORTED
<b>KOREA (REP. OF), 2011</b>	2011 – O <sup>1, 5</sup>	APR 2011/O <sup>1</sup>	½ 2011-PRESENT 2/2011 – NOT REPORTED
<b>LAOS PDR, NO SUBM. REPORTS</b>	2011, 2012 - O <sup>9</sup>	DEC 2012/O <sup>9</sup>	UNKNOWN
<b>MALAYSIA, 2011, ½ 2012</b>	2011 – O, A <sup>1, 5</sup> 2012 – O, A <sup>1, 5</sup> 2013 – NOT TYPED <sup>9</sup>	JAN 2013/NOT TYPED <sup>9</sup>	FMD FREE ZONE WHERE VACCINATION IS NOT PRACTISED
<b>MONGOLIA, 2011</b>	2012 - O <sup>10</sup>	2012/O <sup>10</sup>	½ 2011 – LIMITED ON ONE OR MORE ZONES, 2/2011 -NOT REPORTED
<b>MYANMAR, 2011</b>	2011 – O <sup>1</sup>	FEB2012/O <sup>9</sup>	DISEASE PRESENT
<b>RUSSIAN FEDERATION, 2011</b>	2011 – O <sup>1</sup> 2012 – O <sup>1</sup>	MAR 2012/O <sup>1</sup>	½ 2011 – NOT REPORTED, 2/2011 - DISEASE PRESENT
<b>THAILAND, 2011, ½ 2012</b>	2011 – O, A <sup>1, 5</sup> 2012 – O, A <sup>1, 5</sup>	OCT 2012/A, O <sup>1</sup>	DISEASE PRESENT
<b>VIET NAM, 2011</b>	2011 – O <sup>1, 5</sup> 2012 – A, O <sup>5</sup>	NOV 2012/O <sup>5</sup>	DISEASE PRESENT

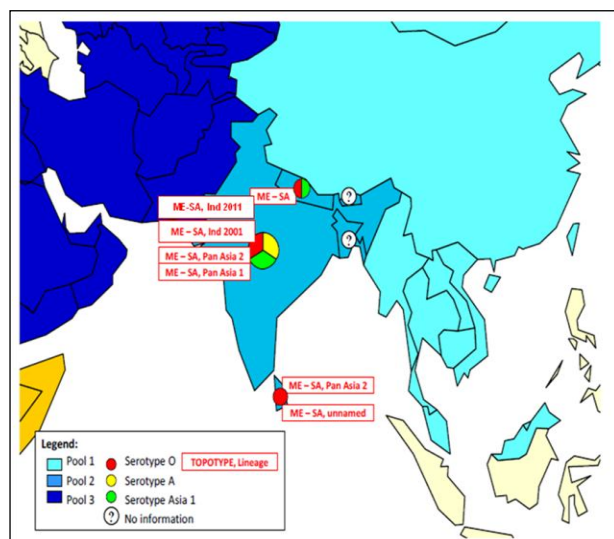
February, 2013

## II POOL 2

### SOUTH ASIA

**Nepal<sup>2</sup>** – FMD outbreaks, causing severe lesions in pigs, have been continuing to appear in Kathmandu district. FMDV serotype O was confirmed by Ag ELISA.

**India<sup>15</sup>** – During February 2013, 25 outbreaks of FMD were reported: in West Bengal (6), Madhya Pradesh (3), Bihar (2), Kerala (1), Odisha (2), Arunachal Pradesh (3), Assam (2), Manipur (1) and Karnataka (5). These outbreaks were caused by serotypes O (23) and Asia 1 (2), FMD virus. The direct economic loss during the period of outbreaks in West Bengal, Madhya Pradesh, Bihar, Kerala, Gujarat, Odisha, Arunachal Pradesh, Assam, Manipur and Karnataka was ~ 200.000,00 USD (loss of milk, mortality, cost of treatment and loss of draught power).



South Asia is known to be an FMD endemic area but very limited data on serotypes is available (Map 5).

The PD-FMD at Mukteswar (FMD Reference laboratory for South Asia) is active in this region and is requested to provide information on FMD circulation that will assist improved understanding of virus circulation.

FMD history in past 2 years is given in Table 3.

Map 5: FMD distribution by serotypes 2010 – 2013

Table 3: Pool 2 FMD history 2010-2013

COUNTRY/6 MONTHS REPORTING TO OIE	FMD HISTORY (past 2 years)	LAST OUTBREAK REPORTED/TYPE	OIE FMD STATUS
<b>BANGLADESH, 2011</b>	2011 – O, A, Asia 1 <sup>6</sup>	NOT AVAILABLE	½ 2011 DISEASE PRESENT, 2/2 2011 - LIMITED TO ONE OR MORE ZONES
<b>BHUTAN, 2011</b>	2011, 2012 – O <sup>5</sup>	NOV 2012/O <sup>5</sup>	DISEASE PRESENT
<b>INDIA, 2011</b>	2011, 2012, 2013 – O, A, Asia 1 <sup>1, 15</sup>	FEB 2013/O, Asia 1 <sup>3, 15</sup>	LIMITED TO ONE OR MORE ZONES
<b>NEPAL, 2011</b>	2011 – O, A, Asia 1 <sup>1, 6</sup> 2012 <sup>2</sup>	DEC 2012/O <sup>2</sup>	DISEASE PRESENT
<b>SRI LANKA, 2011</b>	2011, 2012 – O <sup>1, 5</sup>	2012/O <sup>5</sup>	½ 2011 - DISEASE PRESENT 2/2 2011 – NOT REPORTED

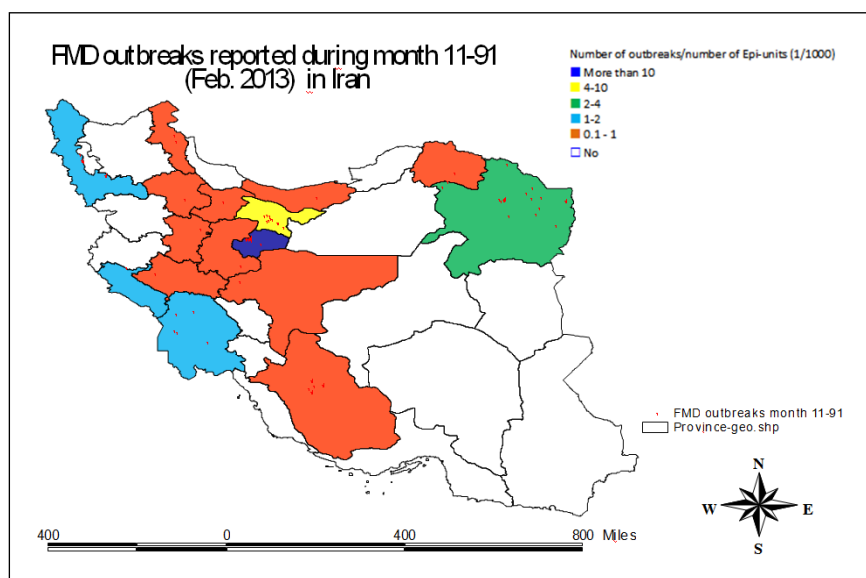


February, 2013

### POOL 3

#### WEST EURASIA & MIDDLE EAST

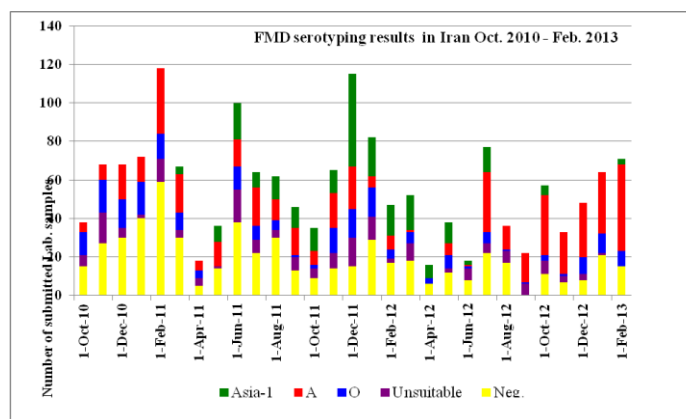
**Iran<sup>2</sup>** - During February 2013, 67 FMD outbreaks were reported (Map 6, Table 4) with evident dominance of serotype A. Serotyping results are shown in graph 1. Qom province is the major hot point area in the country.



Map 6: FMD outbreaks February 2013

Table 4: FMD outbreaks February 2013

	NO OF SAMPLES	NEGATIVE	UNSUITABLE	POSITIVE			
				TOTAL POSITIVE	A	O	ASIA 1
FEB `13	71	15	0	56	45	8	3



Graph 1: Serotyping results October 2010 – February 2013.



February, 2013

Table 5: Pool 3 FMD history 2010-2013

COUNTRY/6 MONTHS REPORTING TO OIE	FMD HISTORY (past 2 years)	LAST OUTBREAK REPORTED/TYPE	OIE FMD STATUS
AFGHANISTAN, 2011	2011 – O, A, Asia 1 <sup>1,5</sup>	DEC 2011 <sup>1</sup>	DISEASE PRESENT
ARMENIA, 2011 MONTHLY REPORTS REGULARLY SUBMITTED TO EUFMD	2011, 2012 – NO REPORTED OUTBREAKS <sup>1</sup>	NOT AVAILABLE	NOT REPORTED IN THIS PERIOD
AZERBAIJAN, 2011 MONTHLY REPORTS REGULARLY SUBMITTED TO EUFMD	2011, 2012 – NO REPORTED OUTBREAKS <sup>1</sup>	JUN 2001 <sup>1</sup>	NOT REPORTED IN THIS PERIOD
BAHRAIN, 2011	2011 – O, A, Asia 1 <sup>5</sup> 2012 – O <sup>5</sup>	MAR 2012/O <sup>5</sup>	LIMITED TO ONE OR MORE ZONES
BULGARIA, 2011, ½ 2012	2011 – O <sup>1,5</sup>	JUN 2011/O <sup>1</sup>	½ 2011 – DISEASE PRESENT, 2/2011, 2012 - NOT REPORTED IN THIS PERIOD
EGYPT, 2011, ½ 2012	2011 – A, O <sup>1,5</sup> 2012 – O, A, SAT 2 <sup>1,5</sup>	JUN 2012/SAT 2 <sup>1</sup>	2011 – NOT REPORTED, 2012 - DISEASE PRESENT
GEORGIA, 2011 MONTHLY REPORTS REGULARLY SUBMITTED TO EUFMD	2011, 2012 – NO REPORTED OUTBREAKS <sup>1</sup>	2002 <sup>1</sup>	NOT REPORTED IN THIS PERIOD
IRAN, 2011	2011, 2012, 2013 – O, A, Asia 1 <sup>5</sup>	FEB 2013/O <sup>5</sup> , A <sup>2</sup> , Asia 1 <sup>5</sup>	DISEASE PRESENT
IRAQ, 2011	2011 – O, A <sup>1</sup> 2012 – A <sup>5</sup>	2012 <sup>5</sup> /A	DISEASE PRESENT
ISRAEL, 2011	2011 – O <sup>1</sup> 2012 – O <sup>5</sup>	MAR 2012/O <sup>5</sup>	DISEASE PRESENT
JORDAN, 2011	2011, 2012 – NO REPORTED OUTBREAKS <sup>1</sup>	2006 <sup>1</sup>	NOT REPORTED IN THIS PERIOD
KAZAKHSTAN, 2011	2011 – O, A <sup>1</sup> 2012 – O, A <sup>5</sup>	MAY 2012/O <sup>10</sup>	DISEASE PRESENT
KUWAIT, 2011	2011, 2012 – O <sup>5</sup>	FEB 2012/O <sup>5</sup>	DISEASE PRESENT
KYRGYZSTAN, 2011	2011 – O, A <sup>1</sup>	NOV 2011/O, A <sup>1</sup>	LIMITED TO ONE OR MORE ZONES
LEBANON, 2011	2011, 2012 – NO REPORTED OUTBREAKS <sup>1</sup>	03/2010 <sup>1</sup>	NOT REPORTED IN THIS PERIOD
LIBYA, NO SUBM. REPORTS	2011 – O <sup>5</sup> 2012 – O, SAT 2 <sup>5</sup>	APR 2012 <sup>1,5</sup>	DISEASE PRESENT
OMAN, 2011	2011 - NO DATA AVAILABLE	DEC 2011 <sup>1</sup>	DISEASE PRESENT
PAKISTAN, 2011	2011 – Asia 1, O 2012 – O, A, Asia 1 <sup>5,13</sup>	JUN 2012/O, Asia 1, A <sup>5,13</sup>	LIMITED TO ONE OR MORE ZONES
AUTONOMOUS TERRITORIES PALESTINE, 2011	2011 – O, A, Asia 1 <sup>1</sup> 2012 – SAT 2 <sup>1,5</sup>	APR 2012/SAT 2 <sup>5</sup>	LIMITED TO ONE OR MORE ZONES
QATAR, 2011	NO DATA AVAILABLE		½ 2011 – NOT REPORTED, 2/2011 DISEASE PRESENT
SAUDI ARABIA, 2011	2012 – O <sup>5</sup>	JULY 2012/O <sup>5</sup>	DISEASE PRESENT
SYRIAN ARAB REPUBLIC, 2011	2011, 2012 – NO REPORTED OUTBREAKS <sup>1</sup>	03/2002 <sup>1</sup>	NOT REPORTED IN THIS PERIOD

February, 2013

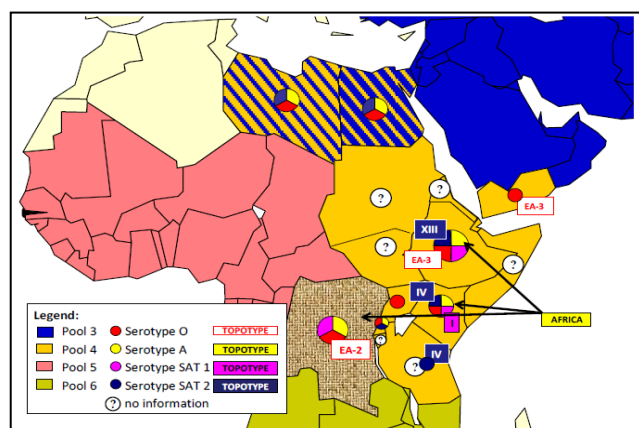
<b>TAJIKISTAN, 2011</b>	2011 – Asia 1 <sup>1</sup>	NOV 2011/Asia 1 <sup>1</sup>	½ 2011 – NOT REPORTED, 2/2011 - DISEASE PRESENT
<b>TURKEY, 2011, ½ 2012</b> <b>MONTHLY REPORTS</b> <b>REGULARLY SUBMITTED</b> <b>TO EUFMD</b>	2011 – Asia 1, A, O <sup>5,1</sup> 2012 – Asia 1, A <sup>5</sup> , O <sup>1</sup>	DEC 2012/O, A <sup>5</sup> , Asia 1 <sup>1</sup>	DISEASE PRESENT
<b>TURKMENISTAN</b> <b>NO SUBM. REPORTS</b>	NO DATA AVAILABLE		UNKNOWN
<b>UZBEKISTAN</b> <b>NO SUBM. REPORTS</b>	NO DATA AVAILABLE		UNKNOWN

February, 2013

## P O O L 4

### EASTERN AFRICA

**Tanzania<sup>2</sup>** - FMD outbreak confirmed in Ngara District. The outbreak in Tanzania followed FMD in neighbouring Districts of Kibungo (Rwanda) and Muyinga (Burundi).



East Africa is known to be FMD endemic area but with limited available data (Map 8).

FMD history in past 2 years is given in Table 6.

Map 8: FMD distribution by serotypes 2010 – 2013

Table 6: Pool 4 FMD history 2010-2013

COUNTRY/6 MONTHS REPORTING TO OIE	FMD HISTORY (past 2 years)	LAST OUTBREAK REPORTED/TYPE	OIE FMD STATUS
<b>BURUNDI, 2011</b>	2011 – O, A, SAT 1, SAT 2 <sup>7</sup>	2011 <sup>7</sup>	UNKNOWN
<b>COMOROS, 2011</b>	2011 - DISEASE SUSPECTED BUT NOT CONFIRMED <sup>1</sup>	2010 <sup>1</sup>	SUSPECTED NOT CONFIRMED
<b>CONGO D. R. , 2011</b>	2011, 2012 O, A, SAT 1 <sup>7</sup>	2011/2012 <sup>7</sup> , NO PRECISE DATA	LIMITED TO ONE OR MORE ZONES
<b>DJIBOUTI, 2011</b>	2011 – ABSENT <sup>1</sup>	NOT AVAILABLE	NOT REPORTED IN THIS PERIOD
<b>EGYPT , 2011, ½ 2012</b>	2011 – A, O <sup>1,5</sup> 2012 – SAT 2 <sup>1,5</sup>	JUN 2012/SAT 2 <sup>1</sup>	2011 – NOT REPORTED, 2012 - DISEASE PRESENT
<b>ERITREA, NO SUBM. REPORTS</b>	2011 – O <sup>5</sup>	DEC 2011/O <sup>5</sup>	UNKNOWN
<b>ETHIOPIA, 2011</b>	2011 – A, SAT 1, O <sup>5,7</sup> 2012 – O <sup>5</sup>	2012/O <sup>5</sup>	DISEASE PRESENT
<b>KENYA, 2011</b>	2011 – O, SAT 1, SAT 2 <sup>1,5</sup> 2012, 2013 – SAT 2, A <sup>7</sup>	JAN 2013/A, SAT2 <sup>7</sup>	DISEASE PRESENT
<b>LIBYA , NO SUBM. REPORTS</b>	2011 – O <sup>5</sup> 2012 – O, SAT 2 <sup>5,7</sup>	APR 2012 <sup>1,5</sup>	DISEASE PRESENT
<b>RWANDA, NO SUBM. REPORTS</b>	2011 – ABSENT <sup>7</sup> 2012 – NOT TYPED <sup>2</sup>	NOV 2012/NOT TYPED <sup>2</sup>	UNKNOWN
<b>SOMALIA, 2011</b>	2011 – NO DATA AVAILABLE	2011 <sup>1</sup>	DISEASE PRESENT
<b>NORTH SUDAN, 2011</b>	2011 – A, O <sup>1</sup>	DEC 2011 <sup>1</sup>	DISEASE PRESENT
<b>SOUTH SUDAN, 2011</b>	2011, 2012 – O, SAT 1, SAT 2, A <sup>7</sup>	2011 <sup>7</sup>	DISEASE PRESENT

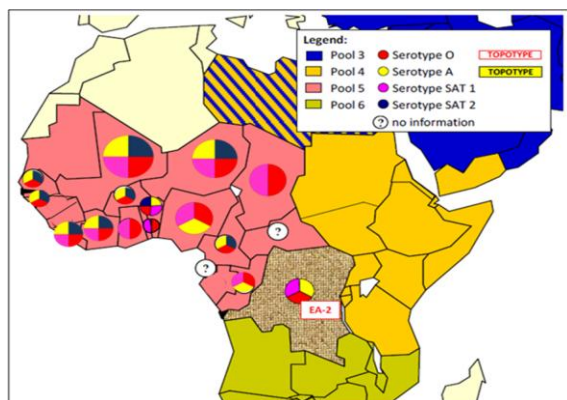
February, 2013

<b>TANZANIA, 2011</b>	2011 – SAT 1(buffalo), SAT 2 (cattle), O <sup>7</sup> , SAT3 <sup>1,5</sup> 2012 – A, O, SAT 1, SAT 2 <sup>5</sup>	MAY-JULY 2012/A, O, SAT 1, SAT 2 <sup>5</sup>	DISEASE PRESENT
<b>UGANDA, 2011</b>	2011 – O, A, SAT 1, SAT 2, SAT3 <sup>7,2,1</sup> 2012 <sup>11</sup>	NOV 2012 <sup>11</sup>	DISEASE PRESENT
<b>YEMEN, NO SUBM. REPORTS</b>	NO AVAILABLE DATA		

## POOL 5

### WEST/CENTRAL AFRICA

**Democratic Republic of the Congo<sup>14</sup>** – The epidemic which started at beginning of November 2012, in Ruzizi plain and around Uvira city, is still continuing. FMD was not confirmed by laboratory tests.



Foot and mouth disease is endemic in West Africa (Map 9). In Gabon, Sierra Leone, Mauritania, Guinea, Guinea Biss. FMD has not been reported at least in the last 3 years.

FMD history in past 2 years is given in Table 7.

Map 9: FMD distribution by serotypes 2010 – 2013

Table 7: Pool 5 FMD history 2010-2013

COUNTRY/6 MONTHS REPORTING TO OIE	FMD HISTORY (past 2 years)	LAST OUTBREAK REPORTED/TYPE	OIE FMD STATUS
<b>BENIN, 2011</b>	2011 – A, O, SAT 1, SAT 2 <sup>4,1</sup>	DEC 2011/O, A, SAT 1, SAT 2 <sup>1</sup>	DISEASE PRESENT
<b>BURKINA FASO, 2011</b>	2011, 2012 – O, A, SAT 2 <sup>4</sup>	NO PRECISE DATA, DEC 2011 <sup>1</sup>	DISEASE PRESENT
<b>CAMEROON, 2011</b>	2011 – O, A, SAT 2 <sup>4,1</sup>	2012 <sup>4</sup>	DISEASE PRESENT
<b>CAPE VERDE , NO SUBM. REPORTS</b>	NO DATA AVAILABLE		
<b>CENTRAL AFR. REP. 2011</b>	NO DATA AVAILABLE		DISEASE PRESENT
<b>CHAD, NO SUBM. REPORTS</b>	2011, 2012 – A, SAT 1 <sup>4</sup>	2011/2012 <sup>4</sup> , NO PRECISE DATA	UNKNOWN
<b>CONGO D. R. , 2011</b>	2011, 2012 O, A, SAT 1 <sup>4</sup>	DEC 2012 <sup>14</sup> /NOT TYPED	LIMITED TO ONE OR MORE ZONES
<b>CONGO R., NO SUBM. REPORTS</b>	NO DATA AVAILABLE		
<b>COTE D'IVOIRE, 2011</b>	2011 – SAT 1, A <sup>1</sup> , O, SAT 2 <sup>4</sup>	2011 <sup>4</sup>	LIMITED TO ONE OR MORE ZONES
<b>EQUATORIAL GUINEA, 2011</b>	NO DATA AVAILABLE		DISEASE SUSPECTED, NOT CONFIRMED
<b>GABON, 2011</b>	2011 – ABSENT <sup>1</sup>	NO IN 2006-2012 PERIOD <sup>1</sup>	NEVER REPORTED
<b>GAMBIA, NO SUBM. REPORTS</b>	2011, 2012 –O, A, SAT 2 <sup>9</sup>	2012 <sup>4</sup> /O	DISEASE PRESENT
<b>GHANA, 2011</b>	2011 – O, A, SAT 1, SAT 2 <sup>4,1</sup>	2012/O <sup>1</sup>	DISEASE PRESENT
<b>GUINEA BISS., 2011, ½ 2012</b>	2011, 2012 – ABSENT <sup>1</sup>	NO IN 2009-2012 PERIOD <sup>1</sup>	NOT REPORTED IN THIS PERIOD

February, 2013

<b>GUINEA, 2011, ½ 2012</b>	2011, 2012 – ABSENT <sup>1</sup>	NO IN 2007-2012 PERIOD <sup>1</sup>	NOT REPORTED IN THIS PERIOD
<b>LIBERIA, NO SUBM. REPORTS</b>	2011, 2012 – A, SAT 2 <sup>4</sup>	2011/2012 <sup>4</sup> , NO PRECISE DATA	UNKNOWN
<b>MALI, 2011</b>	2011/2012 – O, A, SAT 1, SAT 2 <sup>4, 1</sup>	2011/2012 <sup>4</sup> , NO PRECISE DATA	LIMITED TO ONE OR MORE ZONES
<b>MAURITANIA, 2011</b>	2011, 2012 – ABSENT <sup>1</sup>	NO IN 2007-2012 PERIOD <sup>1</sup>	NOT REPORTED IN THIS PERIOD
<b>NIGER, 2011</b>	2011/2012 – O, A, SAT 1, SAT 2 <sup>4, 1</sup>	NO PRECISE DATA, OCT 2011 <sup>1</sup>	LIMITED TO ONE OR MORE ZONES
<b>NIGERIA , 2011, ½ 2012</b>	2011/2012 – O, A <sup>4, 1</sup>	OCT/NOV 2012/A, O, SAT 1, SAT 2 <sup>4</sup>	DISEASE PRESENT
<b>SAO TOME PRINCIPE, NO SUBM. REPORTS</b>	NO DATA AVAILABLE		
<b>SENEGAL, 2011</b>	2011/2012 – O, A, SAT 1, SAT 2 <sup>4, 1</sup>	2012/O, A, SAT 1 <sup>4</sup>	DISEASE PRESENT
<b>SIERRA LEONE, 2011</b>	2011, 2012 – ABSENT <sup>1</sup>	OCT 1958 <sup>1</sup>	NOT REPORTED IN THIS PERIOD
<b>TOGO, 2011</b>	2011, 2012 – O, SAT 1 <sup>1, 4, 1</sup>	2012/O <sup>4</sup>	DISEASE PRESENT



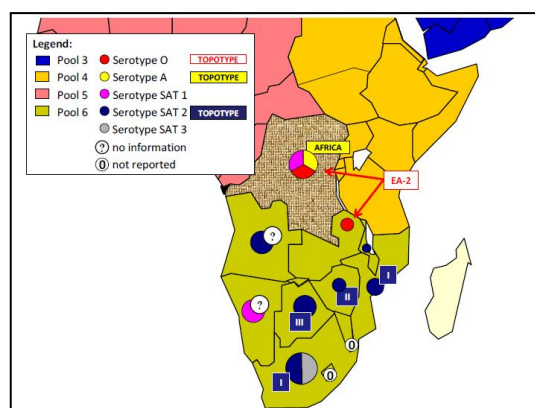
February, 2013

## POOL 6

### SOUTHERN AFRICA

**South Africa**<sup>17</sup> - the Scientific Commission of the OIE concluded that the proposed FMD-free zone in South Africa does not fulfill the relevant international requirements as defined in the Terrestrial Animal Health Code of the OIE.

The main concerns raised by the OIE include aspects of the application including the consistency of the area defined as free, the test used for the surveillance and, the vaccine used in the handling of the outbreak in KwaZulu-Natal.



Swaziland and Lesotho are free from FMD without vaccination. Also, there is a zone in both Botswana and Namibia which is FMD free without, since 2010 and 1997 respectively (Map 10).

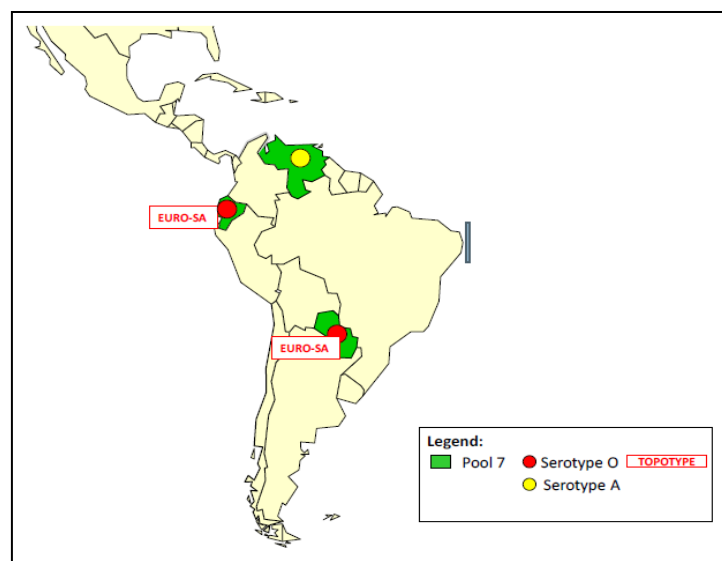
FMD history in past 2 years is given in Table 8.

Map 10: FMD distribution by serotypes 2010 – 2013

Table 8: Pool 6 FMD history 2010-2013

COUNTRY/6 MONTHS REPORTING TO OIE	FMD HISTORY (past 2 years)	LAST OUTBREAK REPORTED/TYPE	OIE FMD STATUS
<b>ANGOLA, NO SUBM. REPORTS</b>	NO REPORTED OUTBREAKS	DEC. 2010/ SAT 2 <sup>1</sup>	UNKNOWN
<b>BOTSWANA, 2011</b>	2011 – SAT 2 <sup>5</sup> SAT 2 <sup>1</sup> 2012 – SAT 2 <sup>1</sup>	OCT 2012/ SAT 2 <sup>1</sup>	FMD FREE ZONE WHERE VACCINATION IS NOT PRACTISED
<b>CONGO D. R. , 2011</b>	2011, 2012 O, A, SAT 1 <sup>4</sup>	2011/2012 <sup>9</sup> , NO PRECISE DATA	LIMITED TO ONE OR MORE ZONES
<b>MALAWI, 2011</b>	2011 – SAT 2 <sup>1</sup>	OCT 2011 <sup>1</sup>	DISEASE PRESENT
<b>MOZAMBIQUE, 2011</b>	2011 – SAT 2 <sup>1</sup>	JUN 2011/SAT 2 <sup>1</sup>	DISEASE PRESENT
<b>NAMIBIA, 2011</b>	2011 – SAT 1 <sup>1</sup> 2012 – SAT 1 <sup>1</sup>	JAN 2012/SAT 1 <sup>1</sup>	FMD FREE ZONE WHERE VACCINATION IS NOT PRACTISED
<b>SOUTH AFRICA, 2011</b>	2011 – SAT 1 <sup>1</sup> SAT 2 <sup>1</sup> 2012 – SAT 2 <sup>1</sup>	APR 2012/SAT 2 <sup>1</sup>	DISEASE PRESENT
<b>ZAMBIA, 2011</b>	2012 – SAT 1 <sup>5</sup> , SAT 2 <sup>1</sup>	JUN 2012/SAT 1 <sup>5</sup>	DISEASE PRESENT
<b>ZIMBABWE, 2011</b>	2011 – SAT 2 <sup>1</sup> 2012/NOT TYPED <sup>12</sup>	2012/NOT TYPED <sup>12</sup>	DISEASE PRESENT

## POOL 7 SOUTH AMERICA



Most South America countries are FMD free with (Uruguay)/without (Chile, Guyana) vaccination or with free zones with/without vaccination. Small areas of the continent are considered as endemic but clinical cases are rare (Map 11).

FMD history in past 2 years is given in Table 9.

Map 11: FMD distribution by serotypes 2010 – 2013

Table 9: Pool 7 FMD history 2010-2013

COUNTRY/6 MONTHS REPORTING TO OIE	FMD HISTORY (past 2 years)	LAST REPORTED/TYPE	COUNTRY FMD STATUS <sup>1</sup>	CONTROL MEASURES
<b>ECUADOR, 2011, ½ 2012</b>	2011 – O <sup>1,8</sup>	AUG 2011/O <sup>1,8</sup>	2011 – DISEASE PRESENT, 2012 – NOT REPORTED	ROUTINE VACCINATION - CATTLE
<b>PARAGUAY, 2011</b>	2011 – O <sup>1,8</sup>	DEC 2011/O <sup>1,8</sup>	½ 2011 – NOT REPORTED, 2/2011 - LIMITED TO ONE OR MORE ZONES	ROUTINE VACCINATION – CATTLE, BUFFALOES
<b>VENEZUELA, NO SUBM. REPORTS</b>	2011 – O <sup>8</sup> A <sup>8</sup>	2011/O, A <sup>8</sup>	UNKNOWN	

**The key to the superscripts is below:**

1. WAHID Interface – OIE World Animal Health Information Database  
<http://web.oie.int/wahis/public.php?page=home>
2. Reports from FAO/EuFMD projects and field officers
3. Dr. Esther TO: Foot and Mouth Disease Hong Kong Situation, Update; Animal Management Division Agriculture, Fisheries and Conservation Department, 10 August 2012
4. FAO/EuFMD supported FMD networks (RESOLAB-FMD West Africa)
5. World Reference Laboratory for Foot-and-Mouth Disease (WRLFMD), [www.wrlfmd.org](http://www.wrlfmd.org)
6. Conference on Scientific Developments and Technical Challenges in the Progressive Control of FMD in South Asia, New Delhi, India, 13-15 February 2012.
7. FAO/EuFMD supported FMD networks (EARLN-FMD Eastern Africa)
8. SENASA, Argentina
9. SEAFMD
10. Open session of the EuFMD, Jerez de la Frontera, Spain. 29-31 October 2012.
11. Ministry of Agriculture Animal Industry and Fisheries. National Animal Disease Diagnostics and Epidemiology Centre (NADDEC) P.o. BOX 513, Entebbe, Uganda
12. Dr C Njagu (Division of Veterinary Field Services):  
Current status of the livestock sector in Zimbabwe, ACWG MEETING OF 31STMAY 2012
13. Pakistan – FMD Bulletin, Vol 1 (1-2), January-June, 2012
14. Laboratoire vétérinaire de Goma, DRC
15. Project Directorate on Foot and Mouth Disease, Indian Council of Agricultural Research, Mukteswar Nainital Uttarakhand, 263138
16. OIE/China national FMD reference laboratory
17. Republic of South Africa, Department of agriculture, Forestry and Fisheries