



Foot and Mouth Disease Sub
Network Meeting , Entebbe 29- 30
August 2013

Country: BURUNDI

Speaker : Dr Lazare BUTUNUNGU

REPUBLIC OF BURUNDI



INTRODUCTION

- Burundi with the population of around 8.3 millions relies on Agriculture and Livestock.
- There is about 1.200.000 farmers
- 700.000 are livestock farmers
- 20% raise cattle, 45% raise small ruminants, 5% raise pigs.
- Others have both cattle and small ruminants or another species.

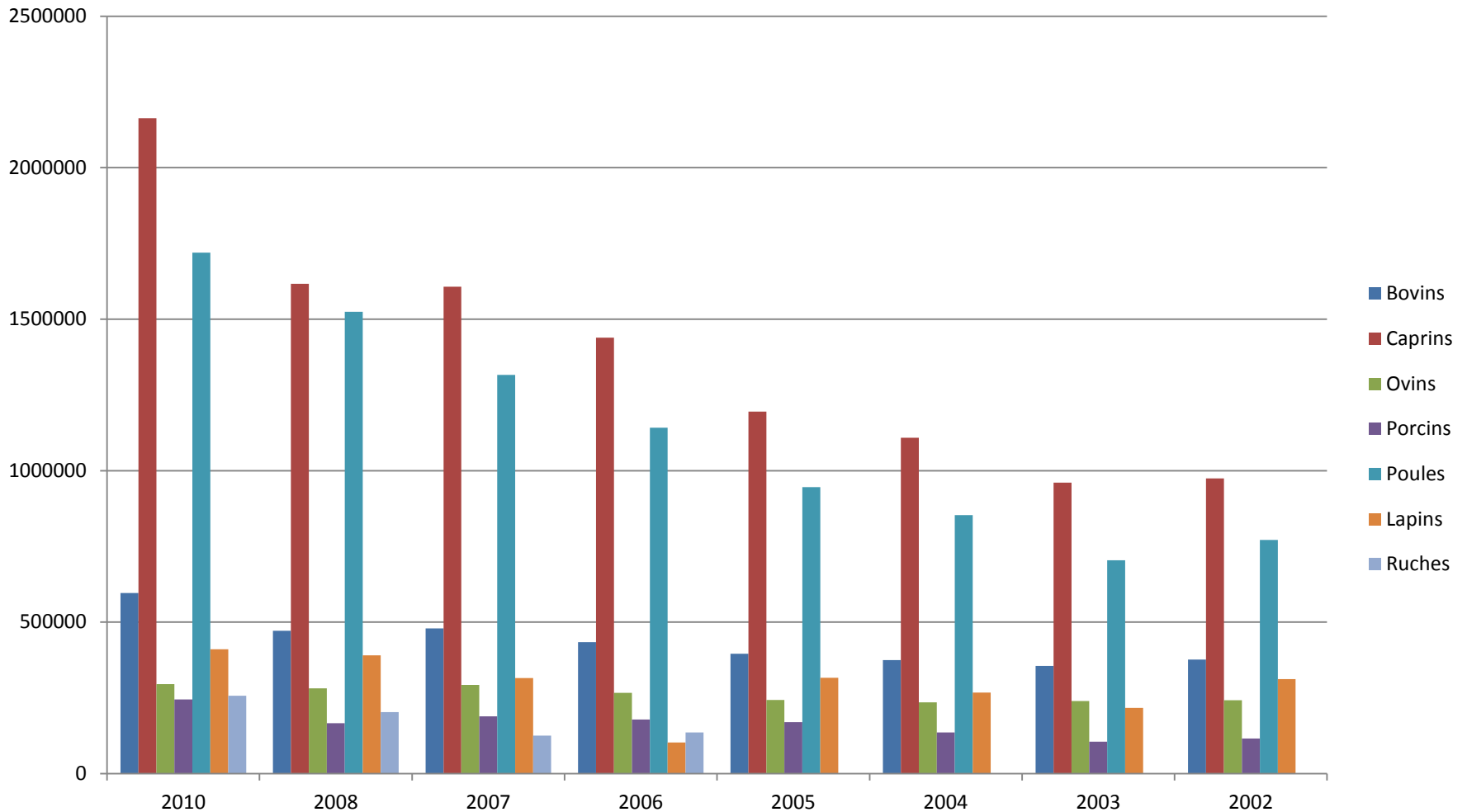
INTRODUCTION

- Livestock contributes for 14% of the national GDP and for 29% of the Agriculture GDP.
- Livestock is extensive but intensive around the urban zones and in some integrated farm systems .
- Traditional raising of cattle, small ruminants and in a least measures pork ,poultry , rabbit and beekeeping is based on extensive basis.
- The space for pasture is declining as there is a high density of the human population.
- The productivity of the livestock remains weak

Animal Population Data

Province	Cattle	Goat	Sheep	Pig	Chicken	Lapins	Bees
Total 2010	596.412	2.162.800	315.214	244.791	1.719.296	410.707	257.312
Total 2009	553.538	2.698.367	291.522	202.926	1.590.688	357.221	240.063
Total 2008	471.614	1616873	281.190	166.721	1524007	390.641	202.669
Total 2007	479.106	1.606.717	292.916	189.505	1.315.788	315.112	125.303
Total 2006	433.800	1.438.713	266.510	178.737	1.142.102	102.998	135.838
Total 2005	395.741	1.194.780	242.933	169.572	945.318	316.351	
Total 2004	374.475	1.108.952	235.611	136.360	852.954	267.544	
Total 2003	355.222	960.288	239.505	105.753	704.254	217.195	
Total 2002	376.346	974.543	242.086	115.835	771.260	311.834	

Animal population data



Burundi livestock population in 2012

- Cattle: 695724
- Goats: 3214581
- Sheep: 329813
- Pigs: 363244
- Chickens: 1 0833676
- Rabbits: 342294
- Bees: 389838

Wildlife

- The contribution of wildlife to GDP is not well known but is not high because it relies only on tourism.
- The wildlife population and its role in the spread and control of FMD is not well described in Burundi.

FMD country status

- Burundi is still in stage 1
- Burundi has focused FMD control measures on cattle .
- In order to reduce the impact of the disease we developed measures of restriction of animal movement and we made vaccination of cattle situated near the main route of animal and at the borders

Serotypes

- Serotypes O, A, SAT-1 and SAT-2 were confirmed at Pirbright

FMD Country Status

- FMD is endemic in Burundi
- Four outbreaks have been reported in 2011
- It has been reported in all provinces in 2012
- In 2013 three out breaks have been reported.
- There have been reported in Bujumbura, Bubanza, and Muyinga provinces

FMD Outbreaks in 2011

- They have been reported in July, in BUJUMBURA BUBANZA, CIBITOKÉ and MAKAMBA provinces
- Restriction of movement and vaccination of bovine have been conducted to control the disease.

FMD reported cases in 2012

Province	reported cases
BUBANZA	1471
BUJUMBURA	1190
BURURI	468
CANKUZO	20
CIBITOKÉ	1140
KAKANZA	275
KIRUNDO	32
MAKAMBA	305

FMD reported cases in 2012

PROVINCE	REPORTED CASES
MURAMVYA	96
MWARO	1
NGOZI	494
RUYIGI	691
RUTANA	438

Outbreaks in 2013

- BUJUMBURA in Mukike commune in July. Under control.
- BUBANZA in Gihanga Commune in Ruzizi Plain in July. Under control.
- MUYINGA in Muyinga and Butihinda commune in August. On going

FMD activities in the country

- Vaccination activities
- Follow up on-going outbreaks
- Purchase of vaccine

Vaccination activities

- A total number of 47.800 bovine has been vaccinated this year.
- Vaccination has been conducted in 10 provinces situated at the borders of the country or /and on Principal route of cattle movement
- Fotivax (inactivated Foot and mouth disease vaccine) manufactured by KEVEVAPI was used

Follow up on-going outbreaks

- It is not easy to follow up outbreaks because reporting is not well done
- Also FMD is endemic and livestock keepers are used to it and are not reporting.
- Animal movement is not well controlled mainly at the border

On going outbreaks

- 2 in Muyinga province.
- One outbreak occurred in Muyinga commune and 13 bovine are under Surveillance and treatment. Since last week.
- An other outbreak is situated in Butihinda commune and 15 animals are under surveillance.

Purchase of vaccine

- The government is going to purchase 50.000 FMD vaccine to be used this year.
- Private farmers are currently using mainly those vaccines
- No research or vaccine production is made in the country.

Constraints

- Limited funding – disease investigation, diagnostic reagents, information dissemination
- Inadequate physical and human power to implement Laboratory network activities

Support/action desired from the East African Network

- Technical and financial support for sample submission, and diagnosis
- Material and reagents for diagnosis
- Need for training of lab staff
- Need of office equipment for communication and networking activities

THANK YOU