

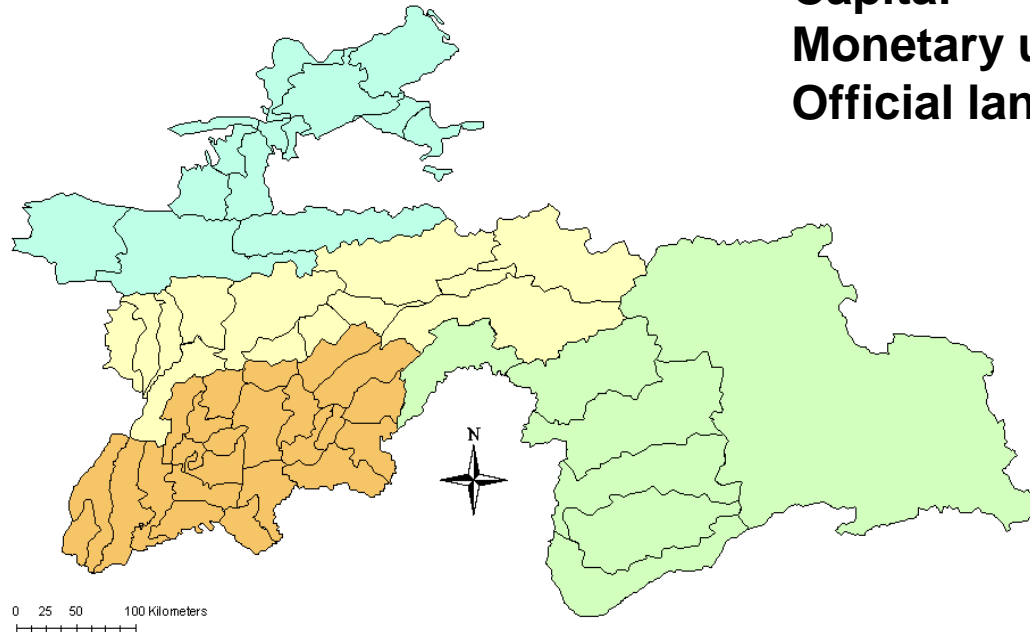


eofmd
european commission for the
control of foot-and-mouth disease

Oie

Progressive Control Pathway (PCP)

TAJIKISTAN



Territory - 143 000 sq. km

Population - 7 500 000

Capital - Душанбе

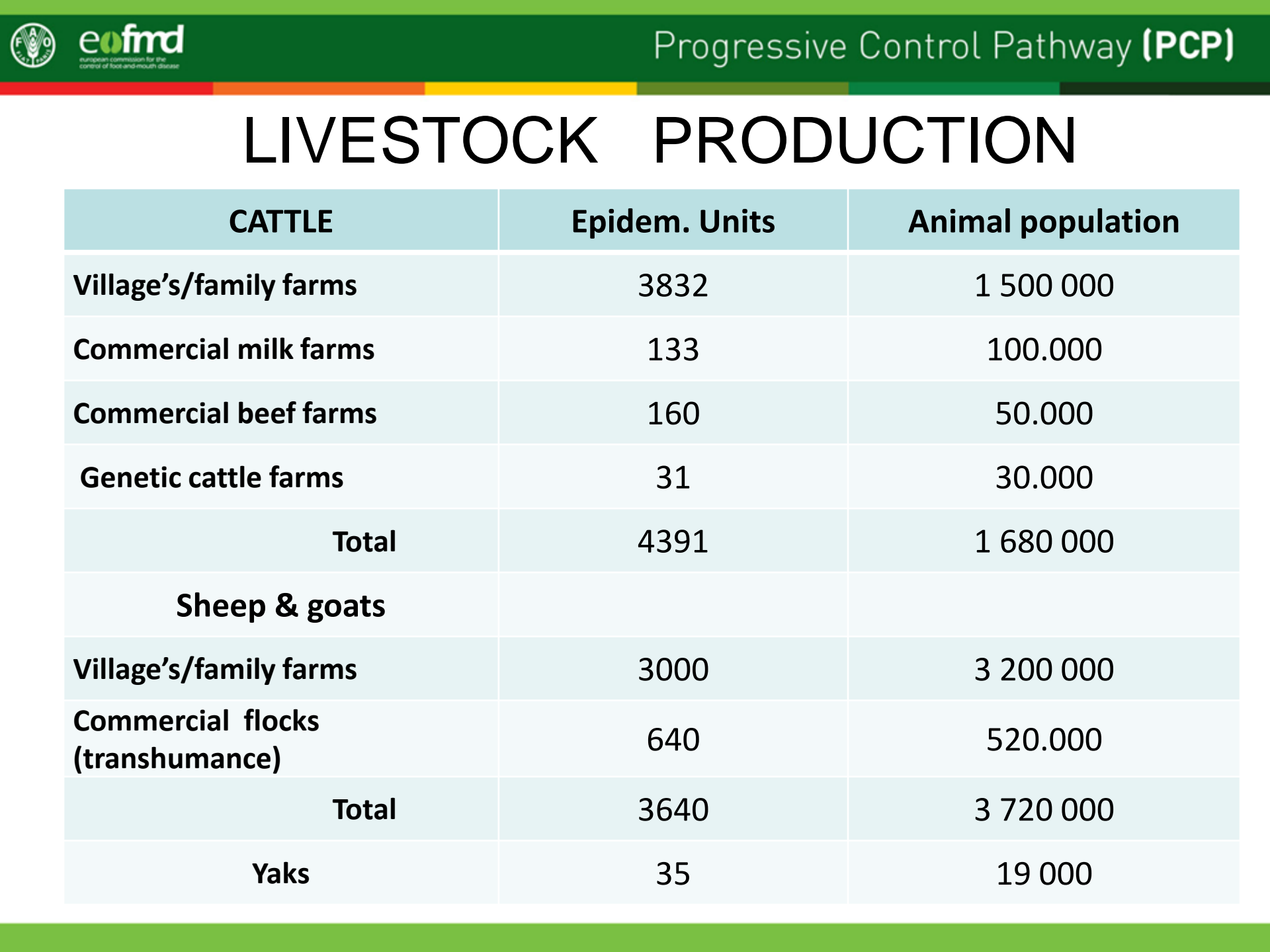
Monetary unit - somoni

Official language - Tajik

West Eurasia Regional Roadmap Meeting

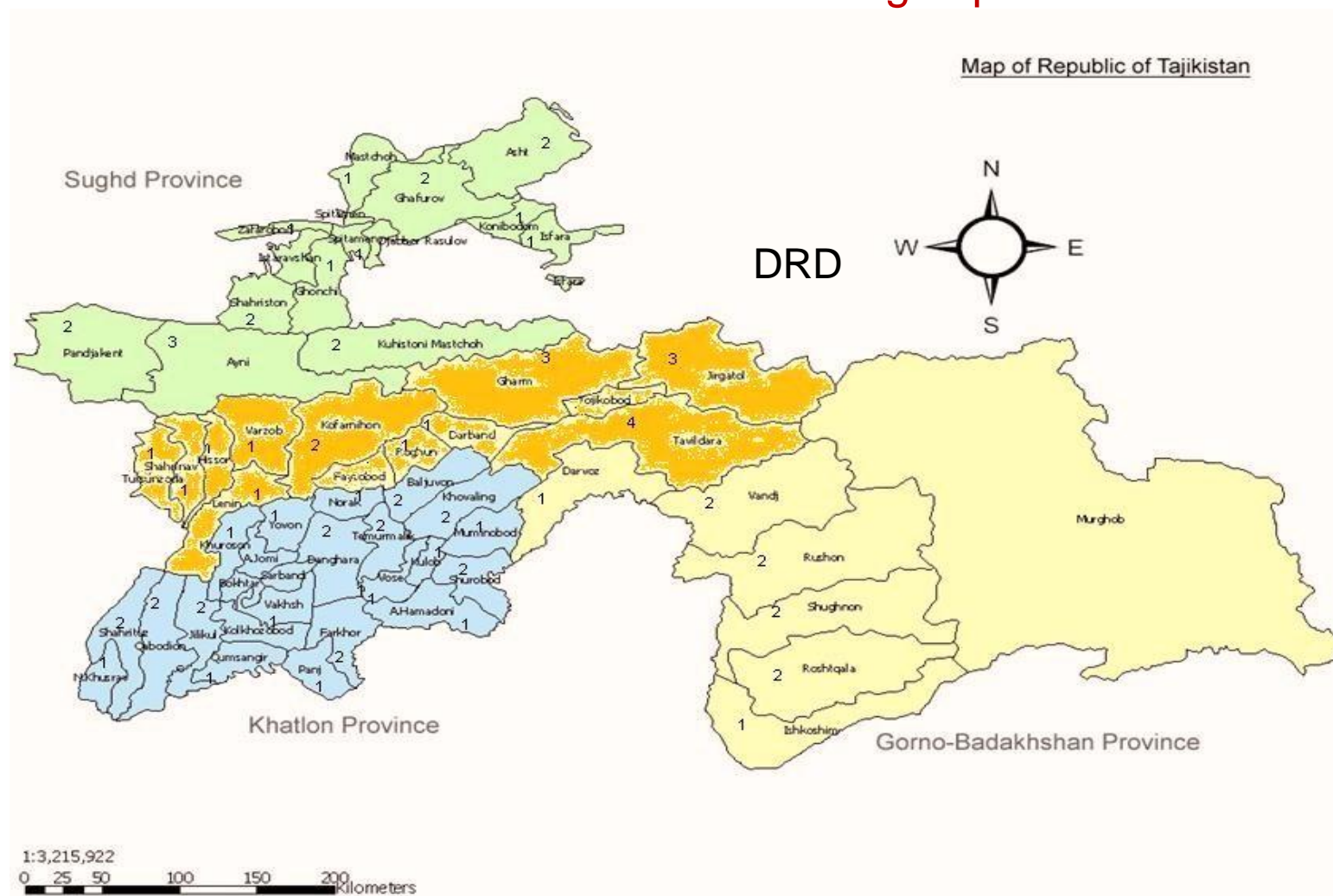
Country Presentation 2012

Sangimurod Murvatulloev



FMD CONTROL MEASURES DURING 2011

Serosurveillance: Selected villages per district



FMD prevalence on province level

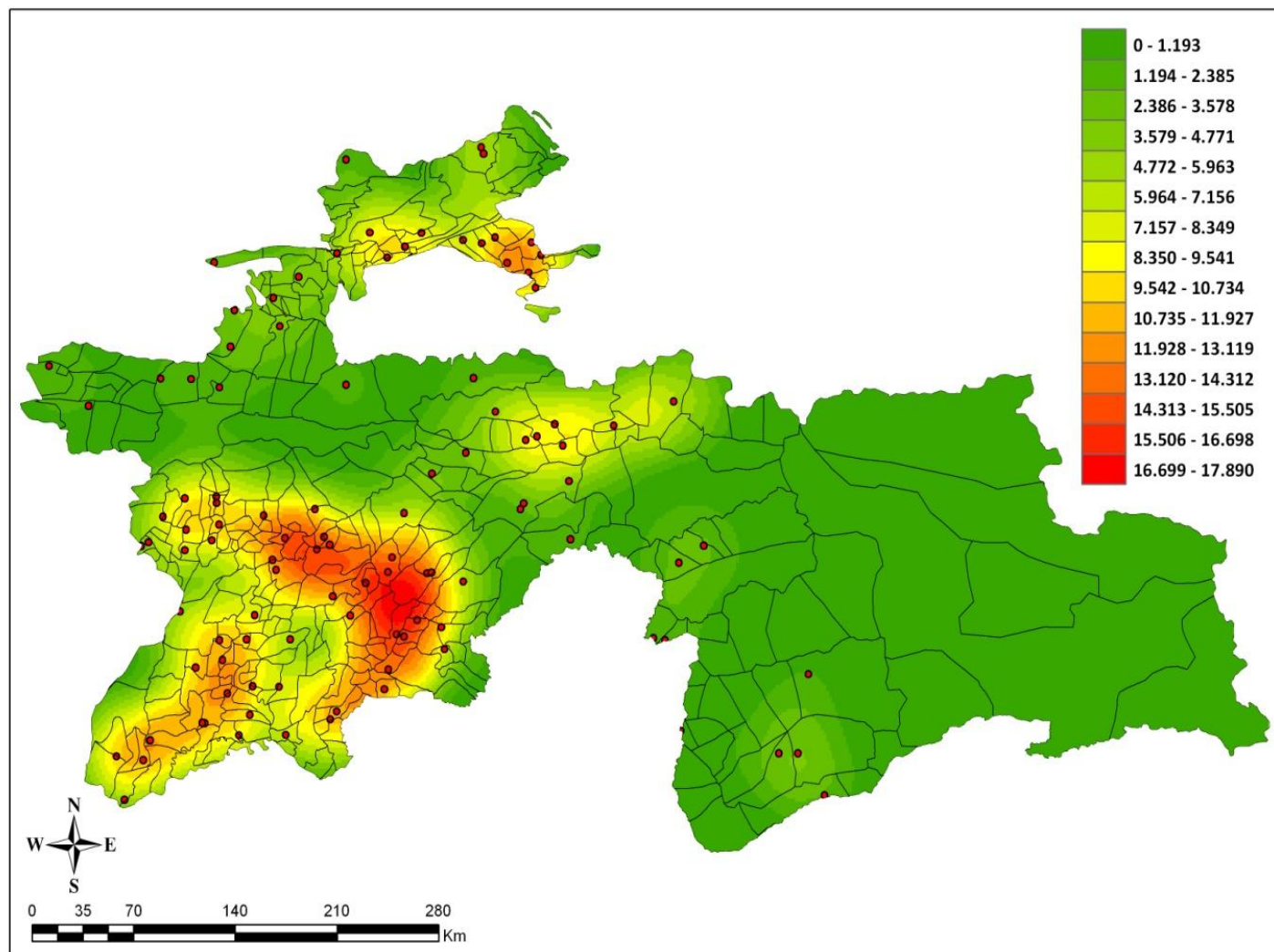
Province	Animal Sampled	Village tested	Crude % of pos	Weighted % of pos	% of pos non vaccinated	% of pos vaccinated
DRD	352	22	48	55.1	70.7	31.4
Khatlon	816	51	46.6	49.4	51.3	47.8
Sughd	320	20	37.5	44.2	46.8	39.2
VMKB	160	10	11.2	13.9		

PREVALENCE OF FMD IN COMMERCIAL FARMS 2011

TYPE	COMMERCIAL FARMS			
	No of farms	Sampled	Positive	%
GENETIC	31	16	13	81
MILK	133	13	8	61
	164	29	21	71

TYPE	COMMERCIAL FARMS			
	No of	Sampled	Positive	%
	animals	animals	animals	
GENETIC	1220	256	125	49
MILK	2844	208	39	19
	4064	464	164	35

Kernel Smoothed FMD Intensity Map



FMD EPIDEMIOLOGY IN 2011

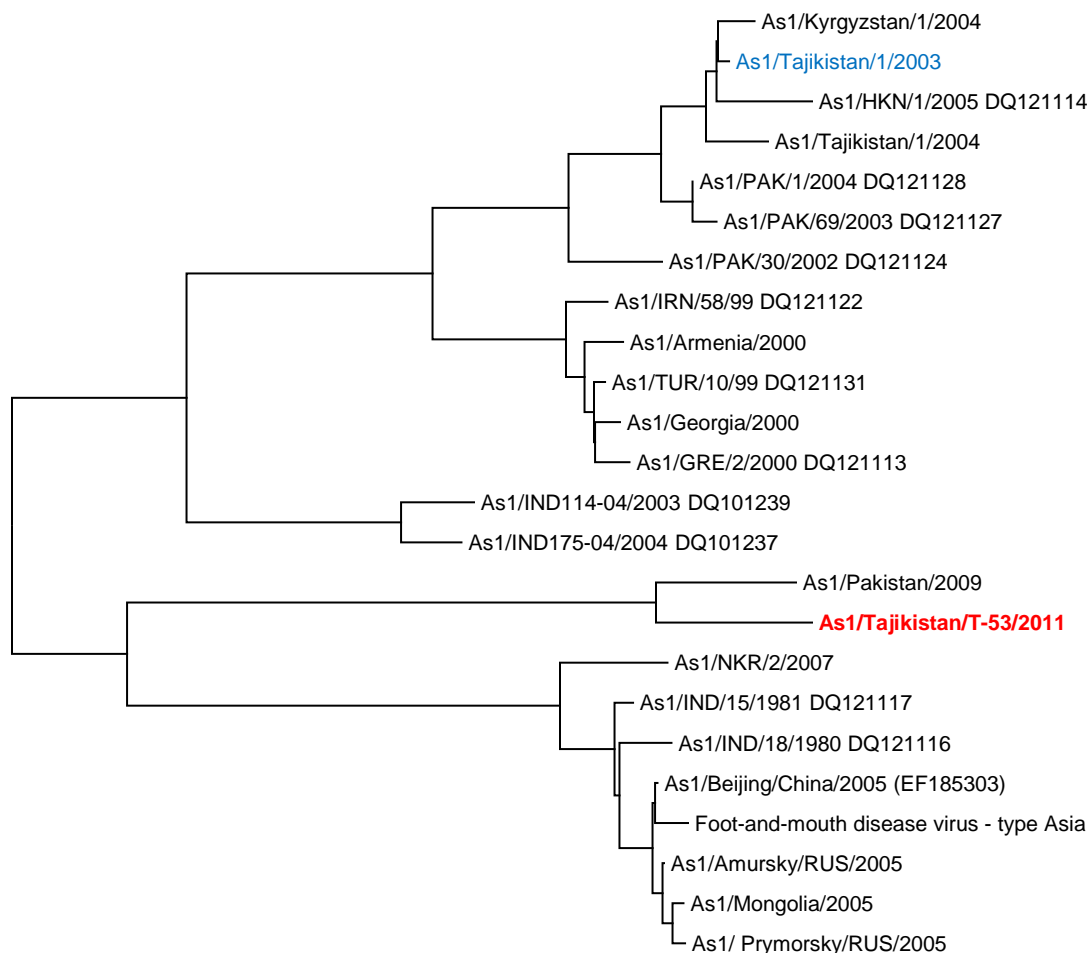
- Number of reported FMD outbreaks - 6
- Number of laboratory confirmed FMD cases - 3
- Type of FMD Virus Identified – O and Asia 1
- Species of infected animals – Cattle, Goats
- FMD was notified to OIE in November 2011

FMD CONTROL MEASURES DURING 2011

FMD serotypes in Tajikistan

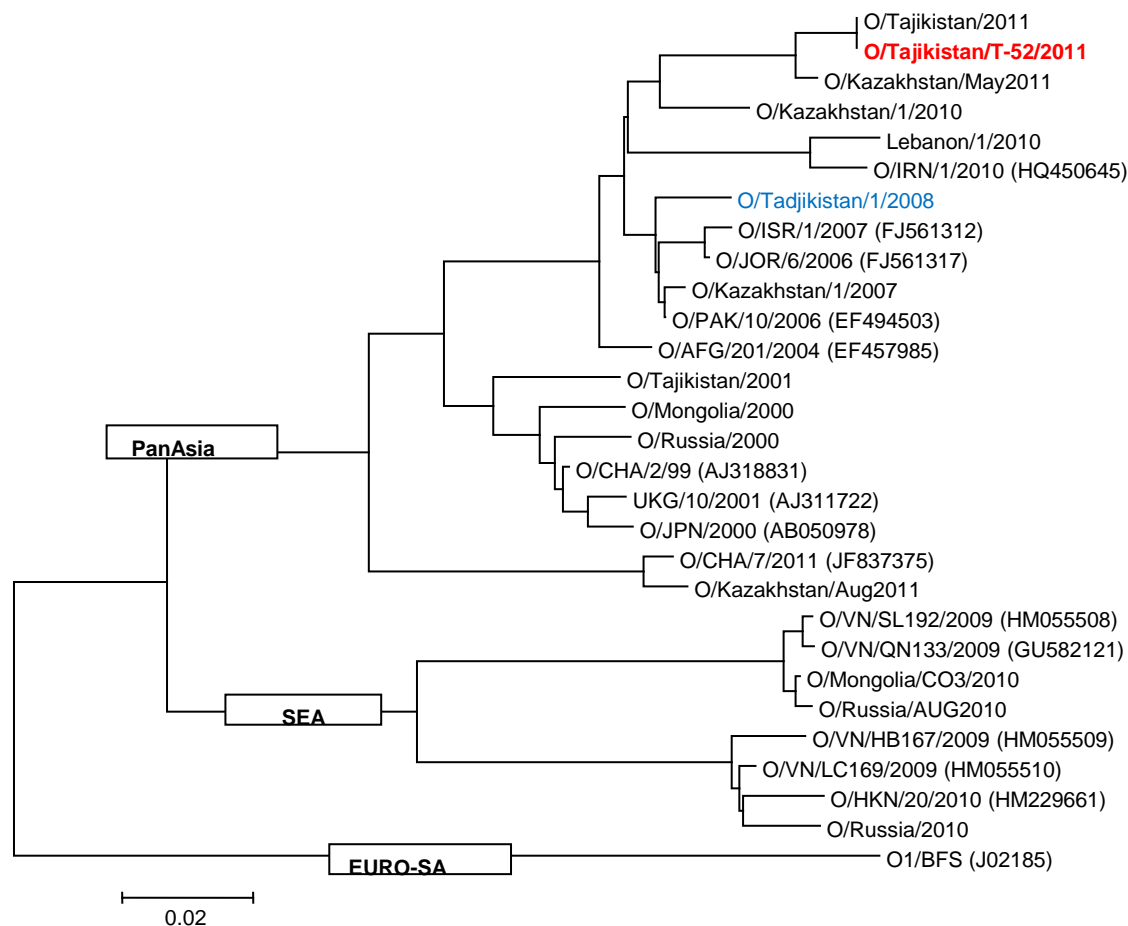
Sample	Date	Place	Ag Elisa	RT PCR	Species
Tissue	05/2011	Tajikabad	O	O	CATTLE
Tissue	10/2011	Rudaki	Asia 1	Asia 1	CATTLE
Swab	12/2011	Slaughter house	----	O	CATTLE

DENDOGRAMMA **As1\Tajikistan\T53\2011**



0.02

DENDOGRAMMA OTajikistan\T52\2011



Working hypothesis on how FMD spreads in the country

- FMD is endemic in Tajikistan
- FMD occurs in all of husbandry systems, however, the virus is mainly maintained within the subsistence farming system (village level). Live animal markets may play also an important role for the high turn-over of the animals.
- FMD outbreaks (**FMD risk hotspots**) is begun in Khatlon Province, usually in March-May and spread during migration to summer pastures . Khatlon province has highest density of animal population



FMD economic study

- FMD Socio-economic impact is planned provide in this year through FAO Project.

Control measures implemented

1) CONTROL MEASURES APPLIED WHEN AN OUTBREAK OCCUR:

- Quarantine for importing animals
- Ring vaccination
- Farmers awareness

2) PREVENTIVE MEASURES (VACCINATION PROGRAM):

- Mass vaccination: *Cattle* : 997,895 coverage = 59%
- *Small ruminants*: 1 513 822 coverage = 40.7%

3) Supportive legal framework

- Revised Veterinary law -2011 (WTO)
- Penalty

Progress in formulating control strategy

- **Strategic Plan should be revised**
- **Control strategy should to be designing of target vaccination program. We need more Vaccination coverage in target population**
- **We have to work more closely with Stakeholders and on legislation**
- **livestock marketing network and associated socio-economic impact and drivers should be understood and described**

THANK YOU VERY MUCH

