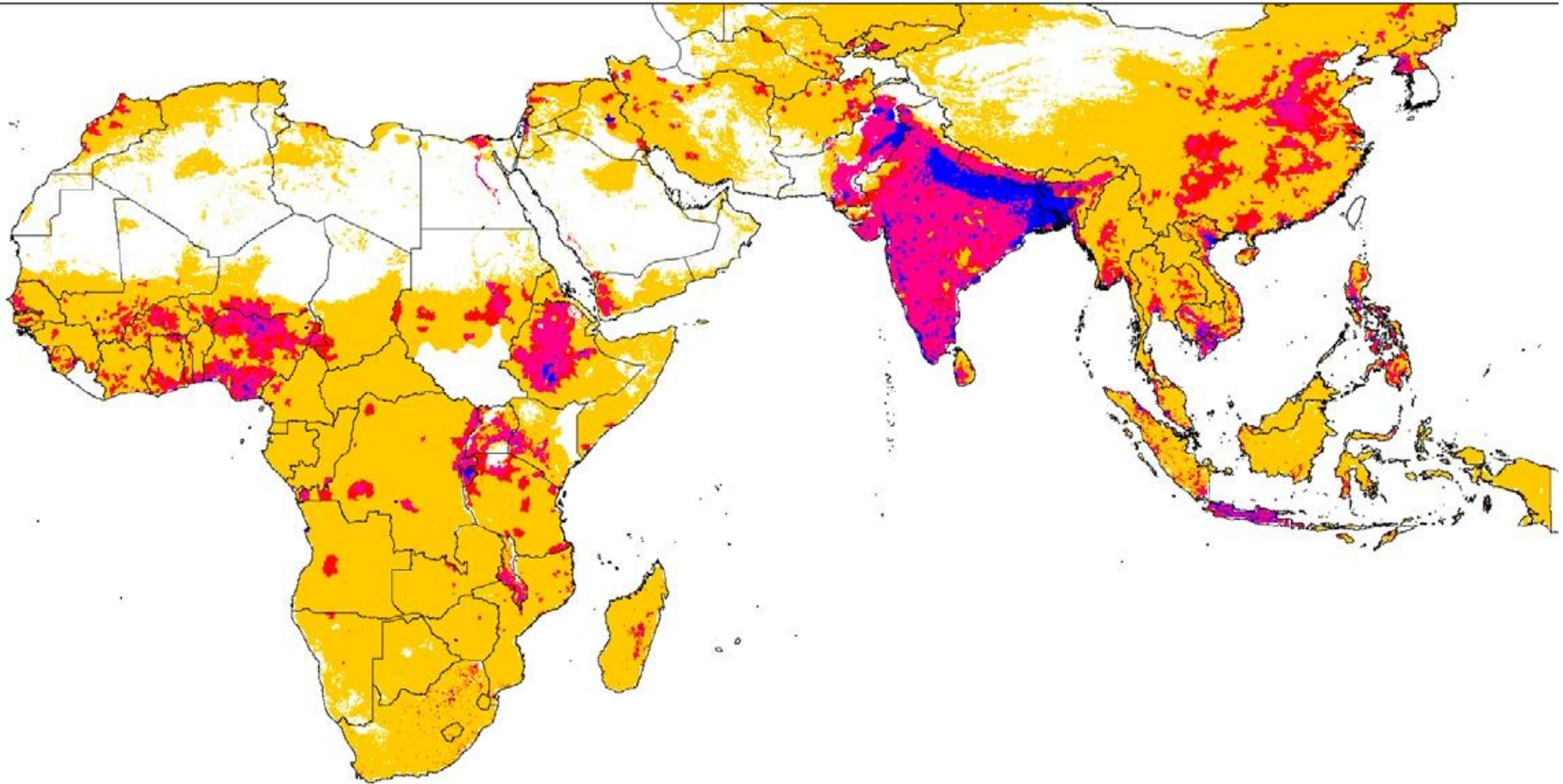


# Nutrition in CAADP Investment Plans



Cost and Financing - 28 February 2013



# Our Presentation

---

- What is an investment plan?
- Cost and Financing Process
- Delineating nutrition Content
  
- Costing – What to cost and how. Nutrition cost?
  
- Financing Gap
  
- Source of Financing
  - National budget
  - External sources:

# What is (and is not) an Investment Plan?

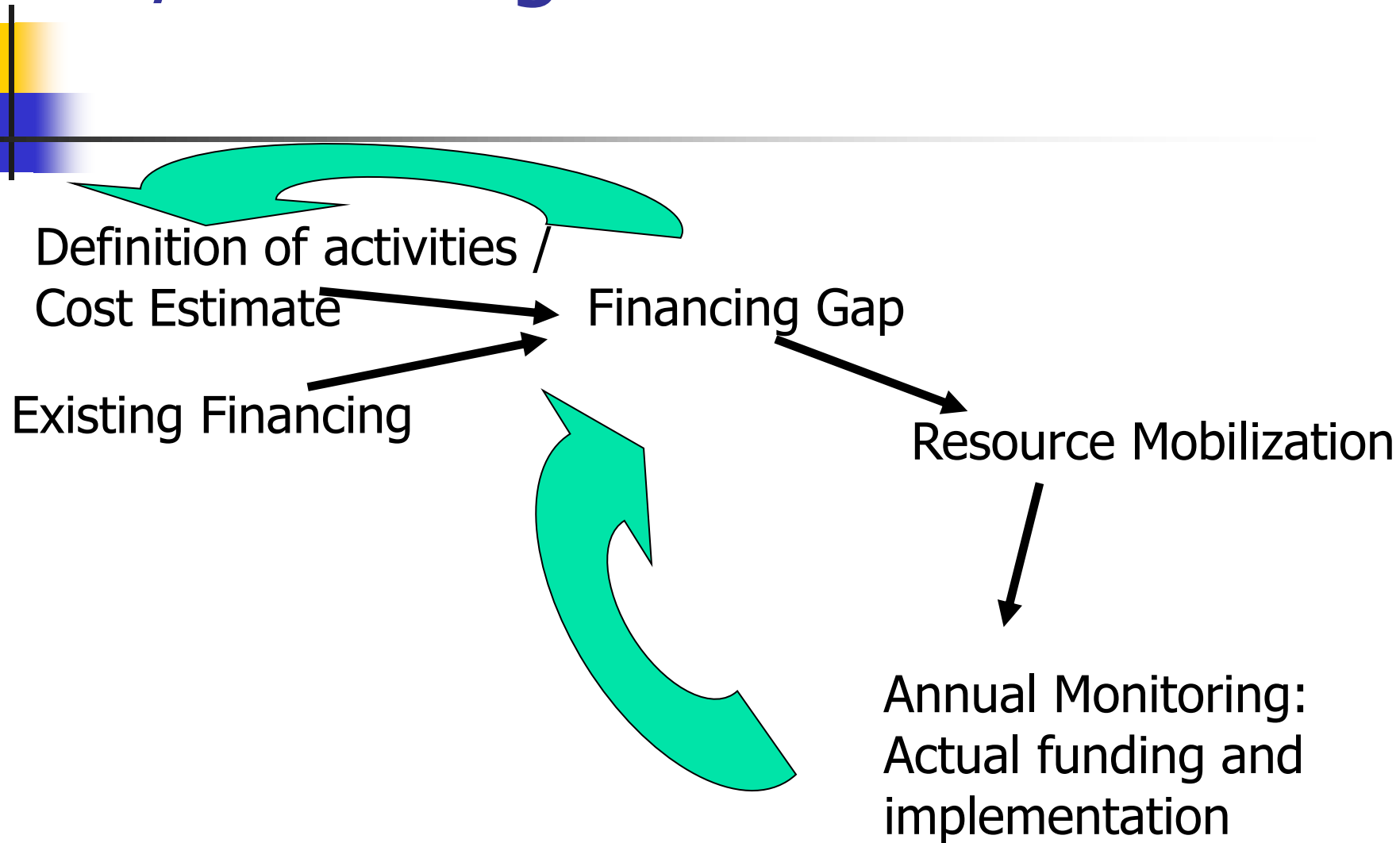
## What it is

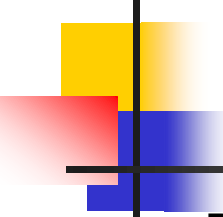
## What it is not!

## Cost Implications

- ✓ Instrument for Transformation Coordination, harmonization, alignment
- ✓ Developed through inclusive negotiation and prioritization: process as important as the final product.
- ✓ Resource mobilization tool in the hand of Government.
- ✗ An implementation plan with high level of detail
- ✗ a perfect, and ideal plan designed by experts
- ✗ a fully costed project
- Rough cost estimates (detailed cost will come after)
- importance of process: not scientific but best estimates with agreed balance between activities,

# Cost/financing Iterative Process





# Delineate the nutrition Content (1/2)

---

- Depends on the objectives / targets of investment plan
- Clarify what we mean, include, what to cost? Existing plans have little / no nutrition
- Nutrition sensitive agriculture + nutrition specific activities
- Negotiation process; go back and force
- depends on other resource mobilization processes and delivery channels in country
- Public vs. private investment (Burundi, Rwanda, Tanzania)

# Delineate nutrition content What to cost? (2/2)



**YES**

Research on  
Diversified  
varieties

Bio  
fortification of  
crops

Homestead  
gardens

small livestock  
/ aquaculture

**?**

Nutrition Education

Community  
based livelihood  
programmes

Vitamin Supplementation

Safety Net  
Programmes

School Feeding  
(homestead?)

**NO**

Potable water

Health centers

HIV / AIDS  
prevention

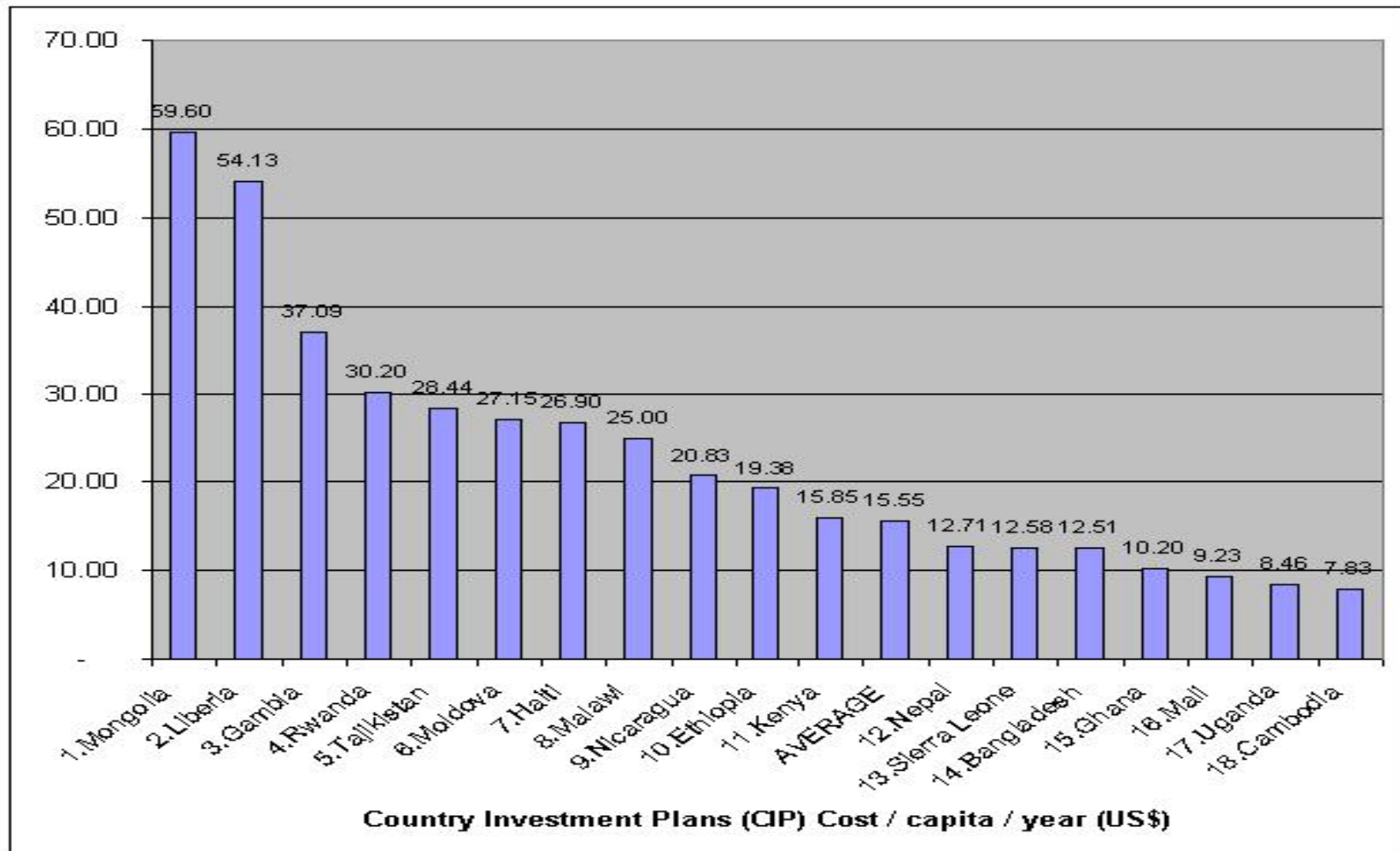


# How to Cost

---

- Zero cost activities (e.g. variety development; crop diversification, rural infrastructure, women targeted extension and credit)
- Rough Cost estimates based on:
  - on-going projects / upscale
  - unit costs
  - preliminary designs when they exist
  - For nutrition, use Govt programmes and projects, NGOs, SUN and REACH as source of cost estimates

# Cost per people of Investment Plans







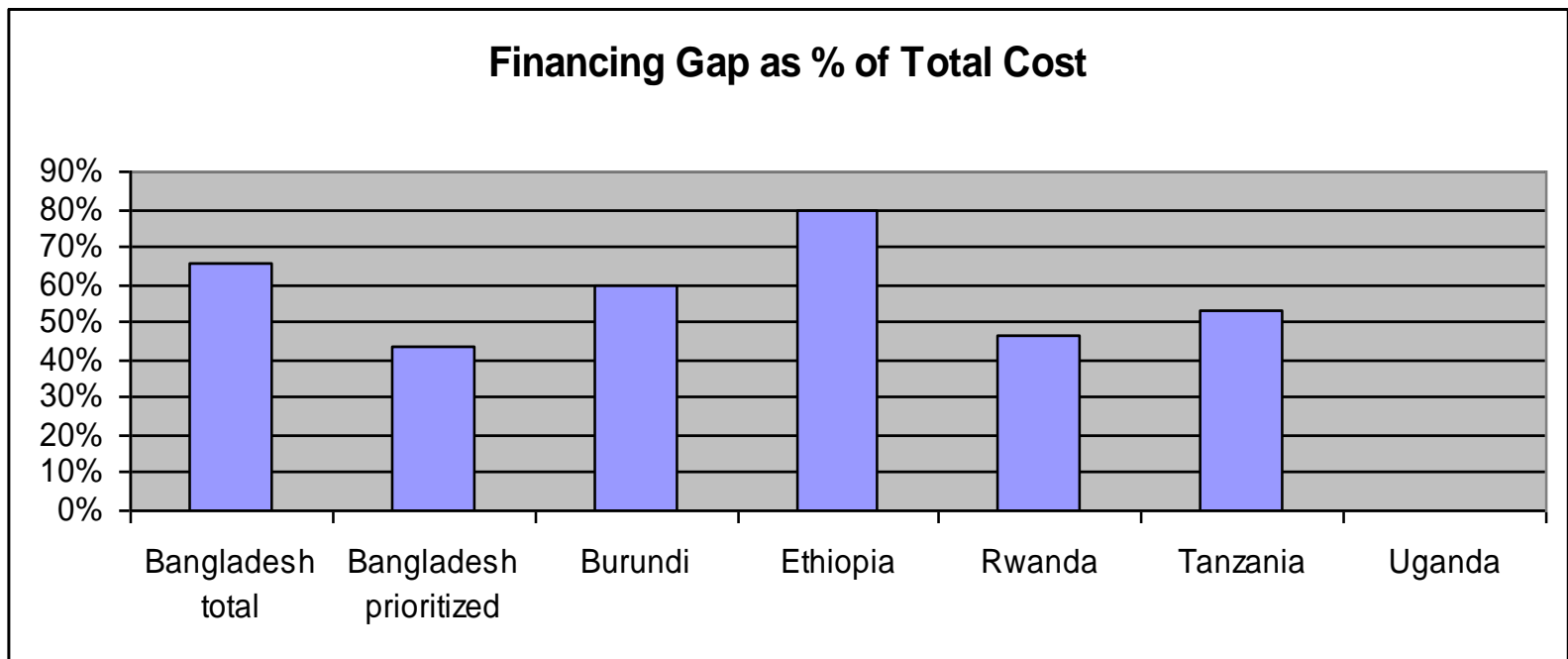
# Existing Resources

---

- both from budget and DPs
- Projected for 5 years
- Needs a good knowledge: inventory / mapping
- Involvement of Planning Commission and Ministry of Finance from the start
- Contribution by DPs, NGOs - essential

# Financing Gap

- Gap = Cost – projected existing resources
- Realistic / reasonable? If not, rework investment plan costs;
- Ranges from almost 0 (Uganda) to 80% (Ethiopia)



# Financing the Plan:

## Additional Budget Resources

---

- Increased investment budget through existing channels / ministries
- Critical to anchor Investment Plan in the Planning Process and resource mobilization mechanisms in the Ministry of Finance.
  - Planning Commission and Ministry of Finance to be involved from the start



# To Keep in Mind

---

Inclusive, transparent Process so that prioritized activities / costs

build on and complement the existing

be realistic (dimension of plan / financing gap)

Good balance between components,  
...especially nutrition content

monitoring of actual expenses